

Winegard® Mounts for Satellite Antennas & WiFi Extenders

Winegard temporary and permanent mount options for Pathway®, Carryout® and DISH® Playmaker automatic portable satellite TV antennas and Winegard Connect WiFi Extenders make usage easier while also raising and protecting the products from damage and theft. Designed for use with automobiles, recreational vehicles and trucks, these mounts are built to withstand the harsh outdoor environment.

Temporary and Permanent Mounts - Six mount options to meet any need.

Backed by Our Industry Leading 2 Year Parts, 1 Year Warranty

Designed and Manufactured in the USA

TEMPORARY MOUNT OPTIONS

WINDOW MOUNT MT-SM30

⚠ For Stationary Use Only (while vehicle is parked)

Provides ability to quickly raise, position and secure satellite TV antenna off the ground for unobstructed reception. After assembling the mount, simply clip the mount with antenna attached onto the truck window. Dual bumper leveling provides multi-point stability.

- Base measures 5.75" x 10.25", weighing 2 pounds. Adjustable vertical arm is 13.35" tall with settings every 1.5".
- Includes window mount assembly, hardware bag, 2 plastic window guards and 2 exterior mount brackets.
- Exterior mount brackets provide additional mounting locations for optimal high look angle placement and further reduce the chance for theft or damage.



See chart on page 3 for compatible antennas



TRIPOD MOUNT TR-1518

Aluminum tripod elevates the portable antenna off the ground for protection from mud and water.

- Easy assembly with sturdy mount (ground anchor/bungee).
- Adjustable height and leveling settings (14.5" - 22").
- Secure unit with anchor loop.
- Quickly disassembles for compact storage.

See chart on page 3 for compatible antennas



Winegard® Mounts for Satellite Antennas & WiFi Extenders

PERMANENT OR TEMPORARY MOUNT OPTION

LADDER MOUNT MT-4000

Permanent or temporary mount for RV with quick disconnect. Creates all the benefits of an ultra low profile roof mounted antenna plus quick and easy portability. Raises satellite TV antenna above ground level obstructions.

- Extends from 19.5" – 23.5" in 2" increments for 3 setting options
- Powder coated for maximum weather resistance.
- Includes mounting plate, 2 ladder brackets, extension tube, locking bolt, and hardware for easy assembly.

See chart on page 3 for compatible antennas



PERMANENT MOUNT OPTIONS

ROOF KIT MOUNT RK-2000 RK-4000

Converts a portable satellite antenna into a permanent roof mount antenna without having to pay the price of a roof mount antenna. Simply remove the portable feet and antenna dome, line up roof feet and fasten into place, replace antenna dome, and mount on roof.

RK-2000

- Includes 3 mounting feet, cable entry plate, wall plate and hardware bag.

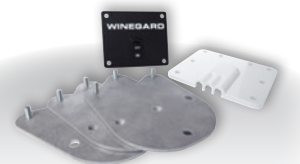
See chart on page 3 for compatible antennas



RK-4000 Exclusively for DISH Playmaker / DISH Playmaker Dual

- Includes 4 mounting feet, cable entry plate, and hardware bag.

See chart on page 3 for compatible antennas



REAR CAB MOUNT MT-SM10

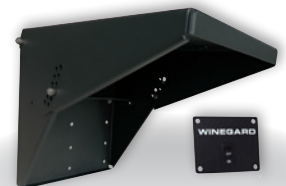
Rear cab mount provides a secure and hassle free mounting option for over-the-road truckers. Higher look angle allows a better unobstructed view of satellites for Winegard satellite antenna, or WiFi for the Winegard Connect.

After a one time installation, the rear cab mount allows truckers to enjoy hassle free satellite TV, WiFi, or WiFi + 4G with a one button on/off switch from inside the cab.







- Durable and built to last in harsh trucking environment.
- Powder coated for maximum rust resistance and paintable to match the cab.
- Mount weighs 13.4 pounds and extends 16.5" from cab with 2 satellite antenna mount location options and one for the Connect WiFi extenders.
- Includes pivot plate, rear cab mount base, wall plate with on/off switch and hardware bag with cable ties.

Must be installed according to manufacturer's instructions.

See chart on page 3 for compatible antennas



Winegard® Mounts for Satellite Antennas & WiFi Extenders

COMPATIBLE WINEGARD ANTENNAS	Pathway		Carryout	DISH Playmaker	Winegard Connect	
	 X1	 X2	 G2+	 DISH Playmaker/Dual	 WF-1	 4G1
Temporary						
Window MT-SM30	X		X			
Tripod	X	X	X	X	X	X
Permanent or Temporary						
Ladder	X		X		X	X
Permanent						
Roof Kit RK-2000	X		X			
Roof Kit RK-4000				X		
Rear Cab	X		X		X	X
Model	PA-2000 PA-2035 PA2000R PA2035R	PA-6002 PA6002R	GM-6000 GM-6035	PL-7000 PL7000R PL-8000 PL-8035	WF-3000 WF-3035 WF-150T	WF-4000 WF-4035 WF-200T

FAQS

WINDOW MOUNT MT-SM30

Q. Which antennas are compatible with the window mount?

A. The Pathway X1 and Carryout G2+ antennas are compatible with Model MT-SM30 window mount.

Q. What type of vehicle can the window mount be used on?

A. The window mount is meant for use on an SUV, RV, or truck. The window mount is meant only for temporary installation on these vehicles.

Q. Is the window mount designed for temporary or permanent installation?

A. The window mount has been designed for temporary installation on an SUV, RV, or truck. The window mount is meant for stationary use only while the vehicle is parked and should only be deployed when the vehicle is stationary. Do not use while the vehicle is moving. Remove prior to traveling.

Q. Where can the window mount be mounted?

A. Once assembled, the window mount can be hung on the vehicle window or on one of the provided exterior brackets. The 2 exterior brackets enable the window mount to be hung on the exterior of the vehicle if desired.

Q. How much does the window mount weigh?

A. The window mount weighs 2 pounds.

Q. Is the window mount weatherproof?

A. The window mount has been designed to withstand the conditions of the trucking industry and is intended to be installed on the outside of the vehicle; however, the window may need to remain slightly open when the window mount is on the window, and care should be taken when using the window mount in inclement weather.

TRIPOD MOUNT TR-1518

Q. Which antennas are compatible with the tripod mount?

A. The Pathway X1, Pathway X2, Carryout G2+, DISH Playmaker antennas and Winegard Connect WiFi extenders are compatible with Model TR-1518 tripod mount.

Q. What is the weight limit of the tripod?

A. The tripod mount has a maximum weight limit of 20 pounds.

Q. What is the height adjustment on the tripod?

A. The tripod can be adjusted between 14.5" and 22".

Q. What steps must be completed to make the tripod compatible with the Pathway X2?

A. In order for the Pathway X2 to securely fit on the tripod mount, the antenna feet must be installed in the inside holes of the antenna base.

Winegard® Mounts for Satellite Antennas & WiFi Extenders

FAQS *continued from page 3*

LADDER MOUNT MT-4000

Q. Which antennas are compatible with the ladder mount?

A. The Pathway X1 and Carryout G2+ antennas and the Connect WiFi Extenders are compatible with Model MT-4000 window mount.

Q. What type of vehicle can the ladder kit mount be used on?

A. The ladder mount is meant for installation on an RV.

Q. Is the ladder mount designed for permanent or temporary installation?

A. The ladder mount has been designed for permanent or temporary installation on an RV.

Q. Will the ladder mount adjust to fit any ladder on all RVs?

A. The ladder mount will fit poles with outer diameters between 1" – 1.125" and extends out from 19.5" – 23.5" in 2" increments for 3 setting options.

Q. How much does the ladder mount weigh?

A. The ladder mount weighs 9.1 pounds. The ladder mount with the antenna installed weighs 20 pounds. Verify the mounting pole can support this weight.

ROOF KIT MOUNTS RK-2000 (RV & TRUCK) RK-4000 (RV ONLY)

Q. Which antennas are compatible with the RK-2000 and RK-4000 roof kit mounts?

A. The Pathway X1 and Carryout G2+ antennas are compatible with Model RK-2000 roof kit mount. Model RK-4000 roof kit mount is specifically designed for the DISH Playmaker and DISH Playmaker Dual PL series.

Q. What type of vehicle can the roof kit mounts be used on?

A. The RK-2000 roof kit mount is engineered for permanent installation on an RV or truck. The RK-4000 roof kit mount is specifically designed for RV use only to be used specifically with the DISH Playmaker/Dual.

Q. Are the roof kit mounts designed for temporary or permanent installation?

A. Both roof kit mounts are designed for permanent installation.

Q. Where should the roof kit mount be installed on the vehicle?

A. The roof kit mount should be installed on or parallel to the centerline of the vehicle and positioned on the roof with cable connections facing the back of the vehicle. The roof kit mount should be installed with clearance of at least 12" from each foot to the edge of the roof and maintaining proper distance to other rooftop equipment. Consult the instruction sheet for obstruction clearance requirements.

REAR CAB MOUNT MT-SM10

Q. Which antennas are compatible with the rear cab mount?

A. The Pathway X1, and Carryout G2+ antennas and the Winegard Connect WiFi extenders are compatible with Model MT-SM10 rear cab mount.

Q. What type of vehicle can the rear cab mount be used on?

A. The rear cab mount is meant for installation on a semi-truck.

Q. Is the rear cab mount designed for permanent or temporary installation?

A. The rear cab mount has been designed for permanent installation on a semi-truck.

Q. How much does the rear cab mount weigh?

A. The rear cab mount weighs 13.4 pounds.

Q. Can the rear cab mount be painted?

A. Yes, the rear cab mount is paintable.

Q. What is the best location for installing the rear cab mount?

A. The optimal location for installing the mount will vary by vehicle make and model. Consult both the installation manual and the vehicle manufacturer to determine the best location for installing the mount.

