

Modular MEGA fuse holder and high current busbar

Dovetail feature

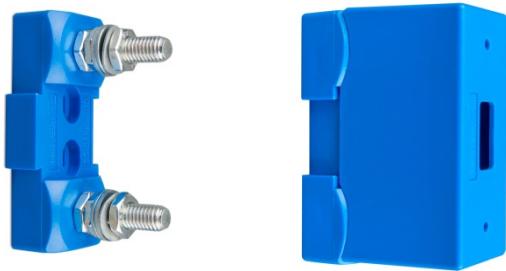
The dovetail feature allows interlocking multiple fuse holders.

Five position high current bus bar (500 A)

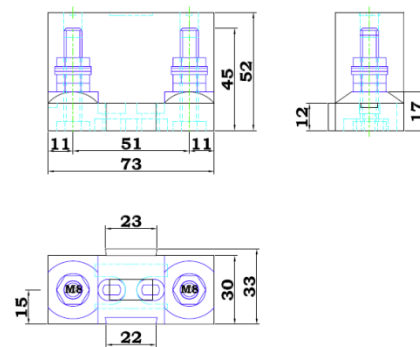
With one M10 input connection.
Input current up to 500 A.

Six position high current bus bar (1500 A)

With two M10 input connections.
Input current up to 2000 A.
Recommended to parallel multiple high power Multi or Quattro inverter/chargers.



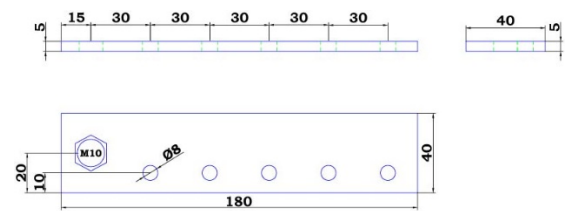
Single fuse holder without cap and with cap



CIP100200100 = Modular fuse holder for Mega-fuse



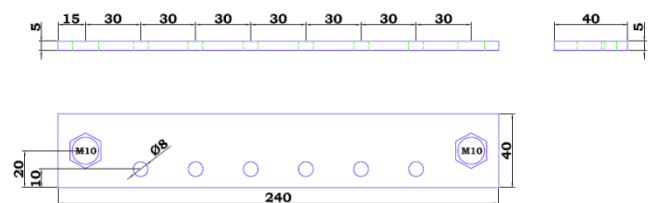
Stacked fuse holders with 5-position high current bus bar (copper 40 x 5 mm)



CIP100400060 = Busbar to connect 5 CIP100200100

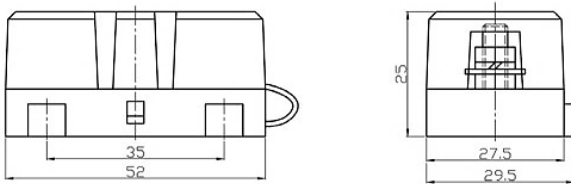


Stacked fuse holders with 6-position high current bus bar (copper 40 x 5 mm)

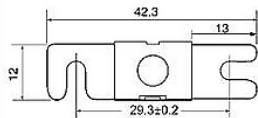


CIP100400070 = Busbar to connect 6 CIP100200100

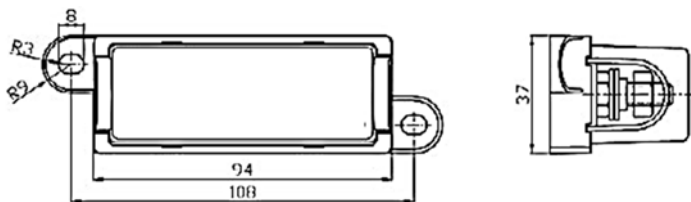
MIDI, MEGA and ANL fuses, and fuse holders



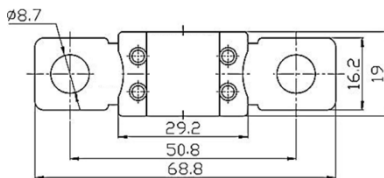
Fuse holder for MIDI fuse



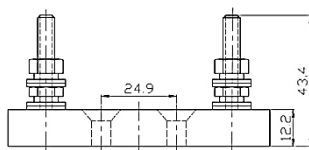
MIDI fuse



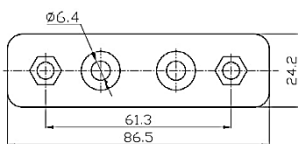
Fuse holder for MEGA fuse



MEGA fuse



Fuse holder for ANL fuse



ANL fuse

MIDI fuses 32V	Appr. voltage drop	Cold resistance
MIDI fuse 100A/32V	60 mV	0,45 mΩ
MIDI fuse 150A/32V	80 mV	0,30 mΩ
MIDI -fuse 200A/32V	80 mV	0,25 mΩ
MIDI fuses 58V	Appr. voltage drop	Cold resistance
MIDI fuse 60A/58V	70 mV	0,9 mΩ
MIDI fuse 100A/58V	70 mV	0,45 mΩ

MEGA fuses 32V	Appr. voltage drop	Cold resistance
MEGA fuse 60A/32V	120 mV	1,5 mΩ
MEGA fuse 80A/32V	90 mV	0,7 mΩ
MEGA fuse 100A/32V	90 mV	0,6 mΩ
MEGA fuse 125A/32V	90 mV	0,4 mΩ
MEGA fuse 150A/32V	90 mV	0,35 mΩ
MEGA fuse 175A/32V	90 mV	0,3 mΩ
MEGA fuse 200A/32V	80 mV	0,25 mΩ
MEGA fuse 225A/32V	80 mV	0,22 mΩ
MEGA fuse 250A/32V	80 mV	0,2 mΩ
MEGA fuse 300A/32V	80 mV	0,17 mΩ
MEGA fuse 400A/32V	70 mV	0,13 mΩ
MEGA fuse 500A/32V	70 mV	0,1 mΩ
MEGA fuses 58V	Appr. voltage drop	Cold resistance
MEGA fuse 125A/58V	90 mV	0,4 mΩ
MEGA fuse 200A/58V	80 mV	0,25 mΩ
MEGA fuse 250A/58V	80 mV	0,2 mΩ
MEGA fuse 300A/58V	80 mV	0,17 mΩ

ANL fuses 80V	Appr. voltage drop	Cold resistance
ANL fuse 400A/80V	125 mV	0,3 mΩ
ANL fuse 500A/80V	100 mV	0,25 mΩ