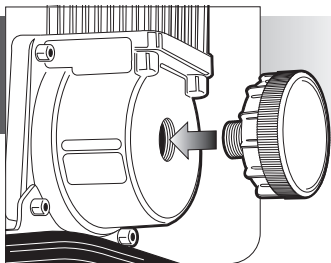


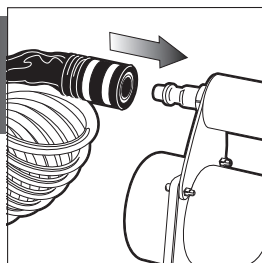
QUICK START GUIDE

1



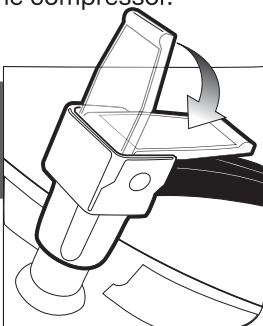
Make sure the intake air filter is installed where the red plug was removed from the intake on the compressor.

2



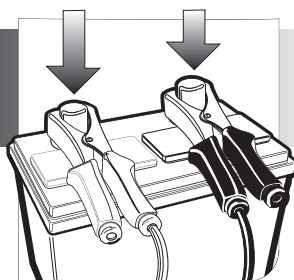
Attach the coil hose to the quick connect coupler on the compressor

3



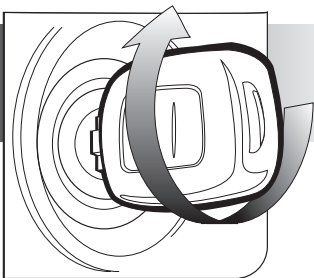
Attach the other end of the 5-in-1 coil hose to the valve stem on your tire.

4



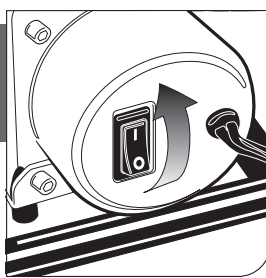
Attach the alligator clamps to the battery. Remember: Red to Positive and Black to Negative. Compressor must be in the off (O) position prior to attaching the battery clamps.

5



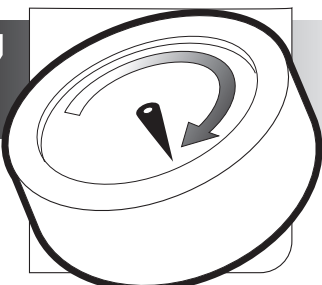
Start your engine or ensure that the battery you are connecting the compressor to is being charged by shore power.

6



Turn the compressor on (I for On, 0 for Off). The compressor will power up and begin filling the tire

7



To check tire pressure, manually turn the compressor off. Once the gauge settles, that will be the accurate pressure in the tire.