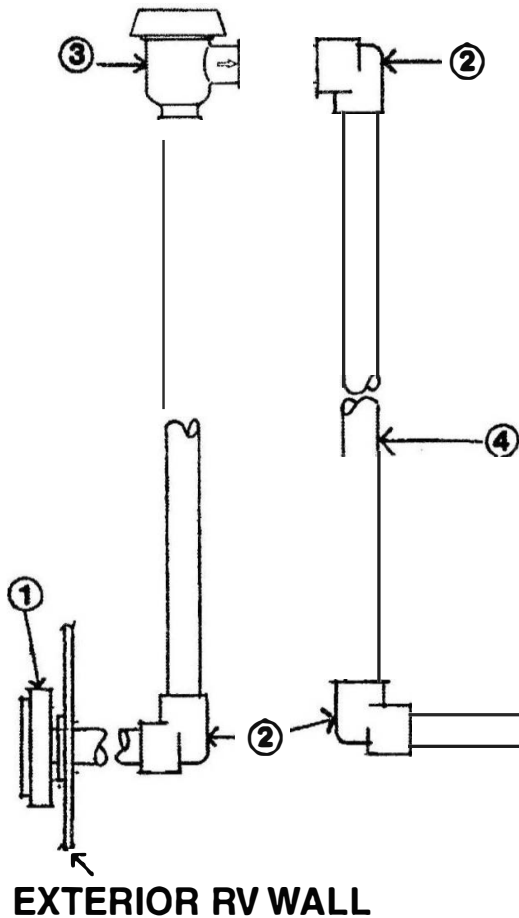


NO-FUSS-FLUSH®
#A70 WASTE HOLDING
TANK FLUSHING
SYSTEM

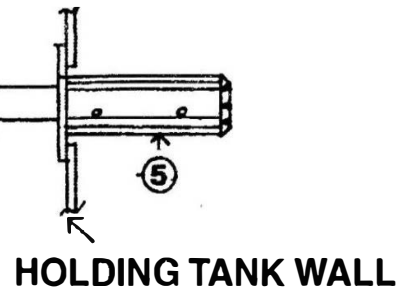
PART#

①	FILL INLET	
②	ELBOW	
③	VACUUM BREAKER-CHECK VALVE	A10-3050
④	½" IPS (LISTED PIPING)	
⑤	"NO-FUSS FLUSH"®	A70



PACKAGE INCLUDES:

#3 & #5, plus 3 stainless steel screws, caution sticker, user and installer instructions.



INSTALLER INSTRUCTIONS FOR FACTORY INSTALLATION OF
NO FUSS FLUSH® WASTE HOLDING TANK FLUSHING SYSTEM

(TEI Listing NO. 16910)

1. Drill 1" hole on the side or end of wasteholding tank, no more than 2" from the top of the tank near center.
2. Insert No-Fuss Flush® in hole in "top" position as stamped on flusher and drill 1/8" lead holes in tank.
3. Apply clear silicone sealer (do not substitute) completely covering inside of flange (about 3/16" thick). Fasten with #8 - 1/2" stainless steel screws supplied. Let silicone cure, following manufactures' instructions on the tube, before testing.
4. Install vacuum breaker-check valve a minimum of 6" above the highest flood level rim of any fixture connected to the wasteholding tank (see drawing). Both valves are directional. **DO NOT** connect any other valves (other than enclosed) to this system. **Do not use a water inlet with check valve.**
5. Check Flusher system for leaks with a minimum water pressure of 40 PSI.
6. Attach enclosed **caution** sticker on or near the water inlet to this system.

NOTE: If it is necessary to replace any parts in this system, the parts shall be the equivalent of and installed in accordance with **IAPMO TSC 27**