



**OVER 35 YEARS OF INNOVATION, QUALITY, SAFETY.**  
**IMPORTANT OWNER-OPERATOR INSTALLATION INSTRUCTIONS**

**A7602**  
**Safe Step**

# **A7602 INVENTORY LIST**

**2- Safe Step Vinyl Guard Without Logo**

**1- Safe Step Vinyl Guard With Logo**

**6- Safe Step Hook Strip**

**1- #10-24 x 1" Phillips Truss Head Screw**

**1- #10-24 x 3/4" Phillips Pan Head Screw**

**2- #10 x 3/4" Tapping Phillips Flat Head Screw SS**

## **Installation:**

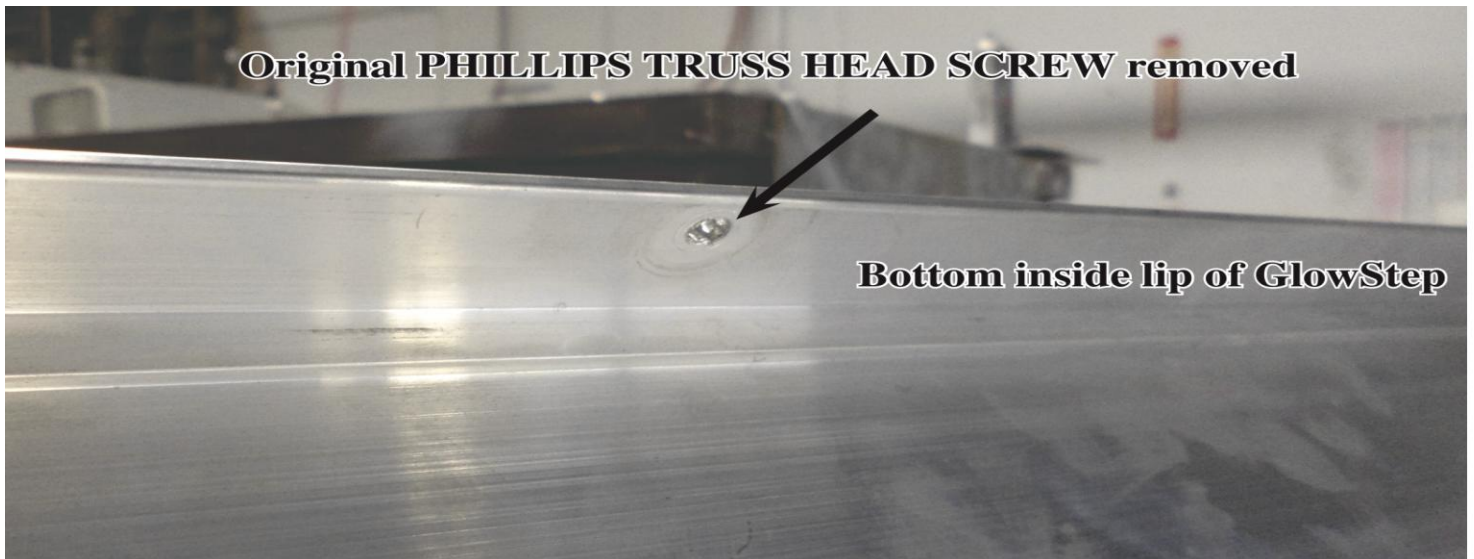
### **Step 1-**

Remove the GlowStep from the Universal Mounting Bracket and lay it on a flat surface for easy access to the reverse side of the GlowStep. Clean and prepare the bottom of the GlowStep and below the Universal Mounting Bracket for installation of **SAFE STEP HOOK STRIP**.

### **Step 2-**

Starting on the bottom step, remove the original Phillips Truss Head Screw used with the Cable Tether to secure the GlowStep when in its collapsed position. Position the **SAFE STEP HOOK STRIP** on the bottom inside lip of the GlowStep and cut or punch a hole in the strip directly over the previously removed fastener hole. You may also cut the **SAFE STEP HOOK STRIP** in half and space it around the hole. Apply the **SAFE STEP HOOK VSTRIP** to the interior wall at the rear of the bottom step lining up with the hole made in the previous step. See **Photo 2.1, 2.2, and 2.3**

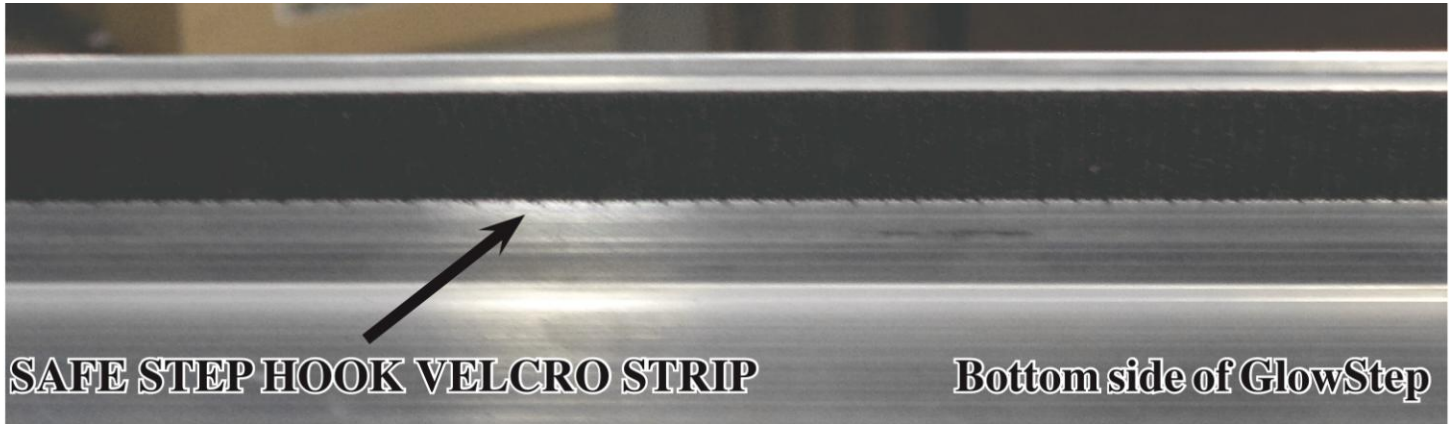
### **Photo 2.1**



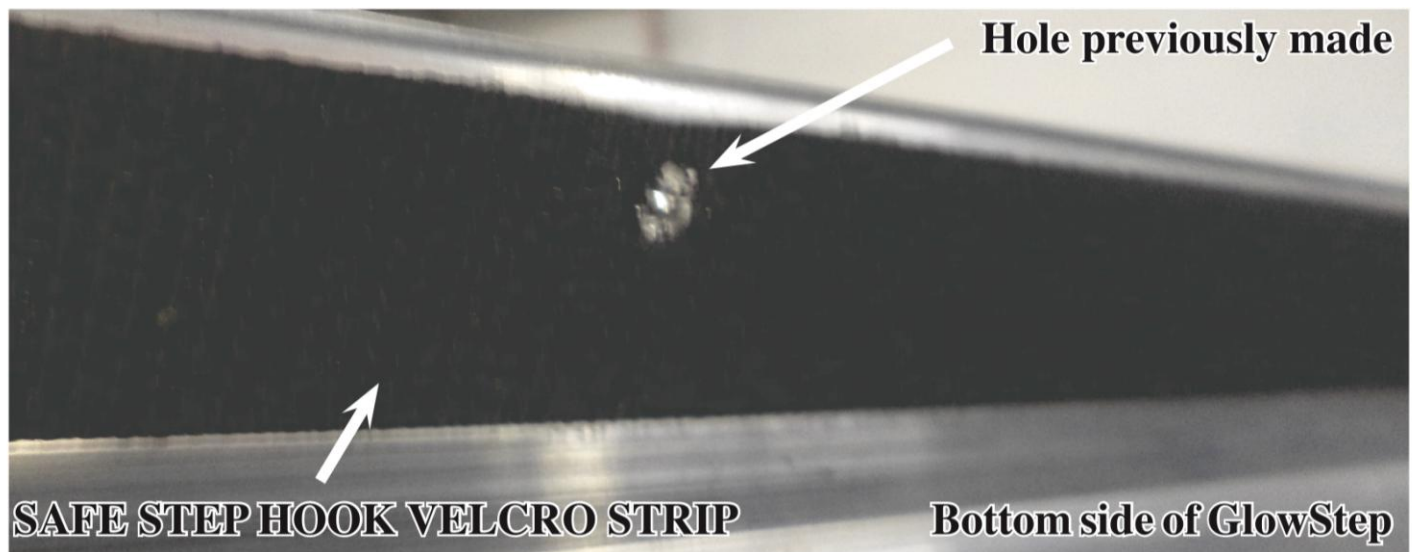
### Helpful Tips

Before applying the strip to your step, make sure you wipe down your step surface with alcohol to ensure the best adhesion. When applying the two strips together make sure to firmly press them together to ensure the best result.

#### Photo 2.2



#### Photo 2.3



#### Step 3-

Apply two **SAFE STEP HOOK STRIPS** to the inside lip of the second step. One on each side.

#### Step 4-

Remove the Cable Tether and Fastener from the top GlowStep and install the **SAFE STEP HOOK STRIP** in the same fashion as Step 2. Do not install Cable Tether and Fastener at this time.

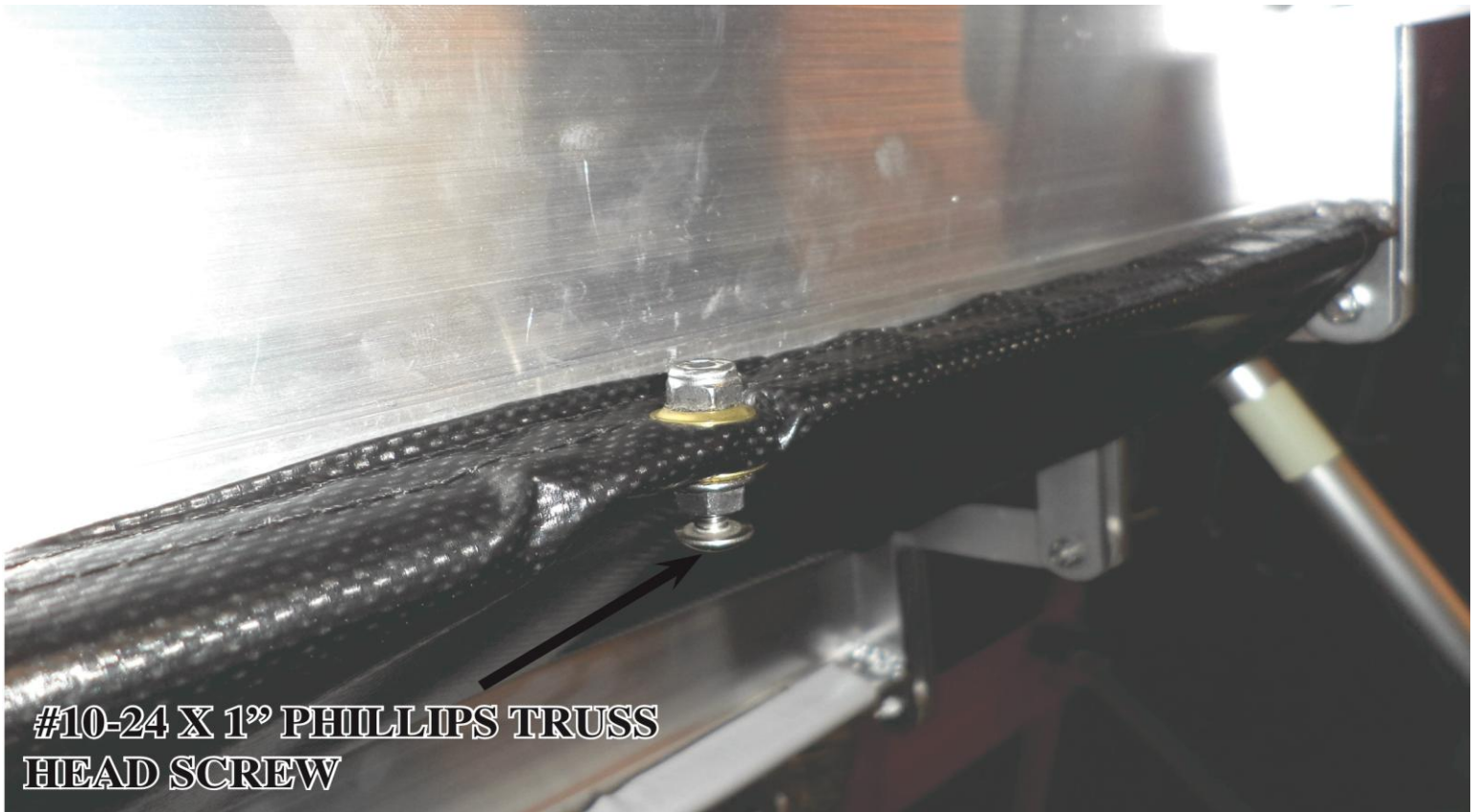
## Step 5-

Mount the final **SAFE STEP HOOK STRIP** to your camper below the Universal Mounting Bracket. For additional strength and adhesion, you may choose to install the two optional **#10 X 3/4" TAPPING PHILLIPS FLAT HEAD** into the **SAFE STEP HOOK STRIP**, using one screw to firmly secure each outside edge to the camper.

## Step 6-

Install the **SAFE STEP VINYL GUARD WITH LOGO** to the bottom GlowStep and attaching to the middle GlowStep. Make sure the metal grommets on the **SAFE STEP VINYL GUARD WITH LOGO** are aligned with the hole in the **SAFE STEP HOOK STRIP** previously installed. Install the **#10-24 X 1" PHILLIPS TRUSS HEAD SCREW** with the “nut” you previously removed from your GlowStep and secure the upper portion of your **SAFE STEP VINYL GUARD WITH LOGO** to the inside front wall of your center GlowStep. See **Photo 6.1** and **6.2**

## Photo 6.1





## Photo 6.2



### Step 7-

Install the first **SAFE STEP VINYL GUARD WITHOUT LOGO** to rear interior wall of the center GlowStep. Apply the upper end of the **SAFE STEP VINYL GUARD WITHOUT LOGO** to the front interior wall of the top GlowStep.

### Step 8-

Install the last **SAFE STEP VINYL GUARD WITHOUT LOGO** to the top GlowStep rear interior wall, making sure that the metal grommets are aligned with the Cable Tether and fastener hole. Re-install the Cable Tether on the interior wall of the top GlowStep rear wall using the supplied **#10-24 X 3/4" PHILLIPS PAN HEAD SCREW** and the previously removed nut. The Cable Tether will now be situated on the inside edge of the GlowStep to allow for secure storage.

### Step 9-

Re install your GlowStep to your camper mounting bracket and secure the **SAFE STEP VINYL GUARD WITHOUT LOGO** to your camper mounted **SAFE STEP HOOK STRIP**. See Photo 9.1

**Photo 9.1**



Find out more about RV hardware we have.