



**OVER 35 YEARS OF INNOVATION, QUALITY, SAFETY.
IMPORTANT OWNER-OPERATOR INSTALLATION INSTRUCTIONS**

A7100

SUPERTRUSS SKID WHEEL

Minor movement (or settling) can occur in some incidental harsh driving conditions (On or off road). A rubber bed mat is not a requirement to maintain the lifetime warranty on a Torklift system, but a strong recommendation, simply as a safety precaution to protect the truck bed, the bottom of the camper and to give the camper additional support.

Warning!!

TORKLIFT DOES NOT RECOMMEND: Installing your truck camper in your truck on top of a drop in plastic bed liner!!! **THIS WILL VOID YOUR WARRANTY!**

The drop in plastic bed liners can slide on top of the truck bed surface, and the camper can slide on top of the slick surface of the bed liner. The liner can also act as a spring causing a trampoline effect increasing vertical truck camper movement, independent of the vehicle, possibly resulting in truck bed damage and/or camper damage!

A7100 PARTS INVENTORY

- 1 - SKID WHEEL ASSEMBLY W/ AXLE BOLT & NUT
- 2 - 1/2" x 4" GRD5 HEX BOLT
- 2 - 1/2" STOVER LOCKNUT
- 2 - 1/4" x 2 1/2"(6cm) x 2 3/4"(7cm) SHIM PLATES
- 8 - 1/2" SAE FLATWASHERS

The Super Truss skid wheel replaces the outer most collar on the Super Truss extension as seen in Photo A, B and C.

The Super Truss skid wheel will be assembled and installed as seen is Photo A.

Tighten both the upper 1/2" x 4" hex bolt and lower skid wheel axle bolt to 50 ft. lbs.(67nm)

The skid wheel axle can be lubricated with wheel bearing grease through the grease zerk located on the hex head of the axle bolt.

INSTALLATION PHOTOS

PHOTO A

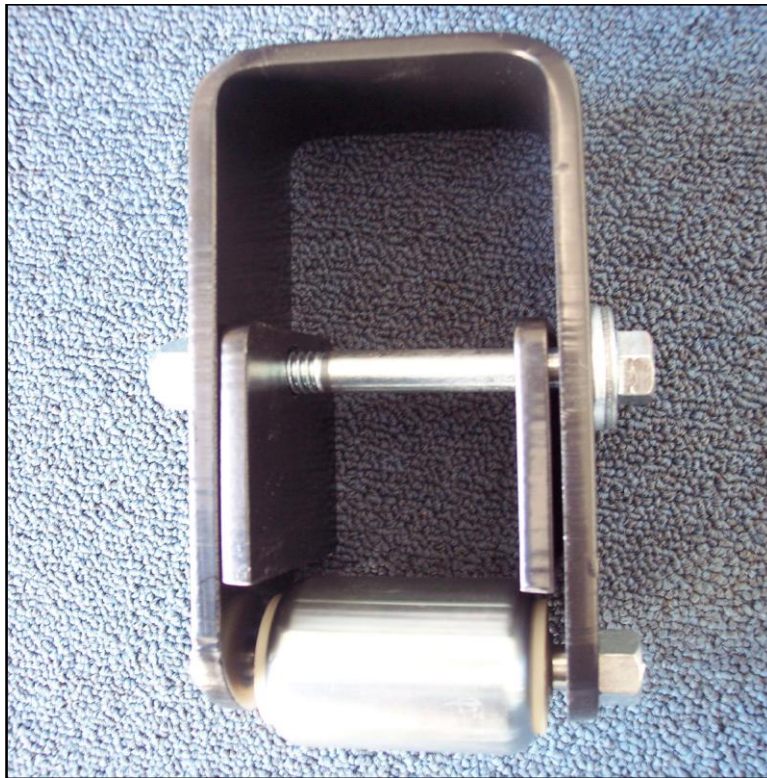


PHOTO B



INSTALLATION PHOTOS

PHOTO C





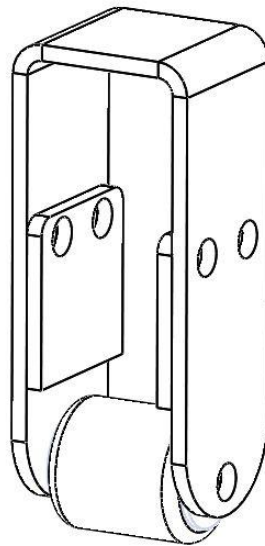
TORKLIFT

INTERNATIONAL

OVER 35 YEARS OF INNOVATION, QUALITY, SAFETY.
IMPORTANT OWNER-OPERATOR INSTALLATION INSTRUCTIONS

A7100

SUPERTRUSS SKID WHEEL



A7100 PARTS INVENTORY

- 1 - SKID WHEEL ASSEMBLY W/ AXLE BOLT & NUT
- 2 - 1/2" x 4" GRD5 HEX BOLT
- 2 - 1/2" STOVER LOCKNUT
- 2 - 1/4" x 2 1/2"(6cm) x 2 3/4"(7cm) SHIM PLATES
- 8 - 1/2" FLATWASHERS

The Super Truss skid wheel replaces the outer most collar on the Super Truss extension as seen in Photo A, B and C.

The Super Truss skid wheel will be assembled and installed as seen is Photo A.

Tighten both the upper 1/2" x 4" hex bolt and lower skid wheel axle bolt to 50 ft. lbs.(67nm)

The skid wheel axle can be lubricated with wheel bearing grease through the grease zerk located on the hex head of the axle bolt.

INSTALLATION PHOTOS

PHOTO A

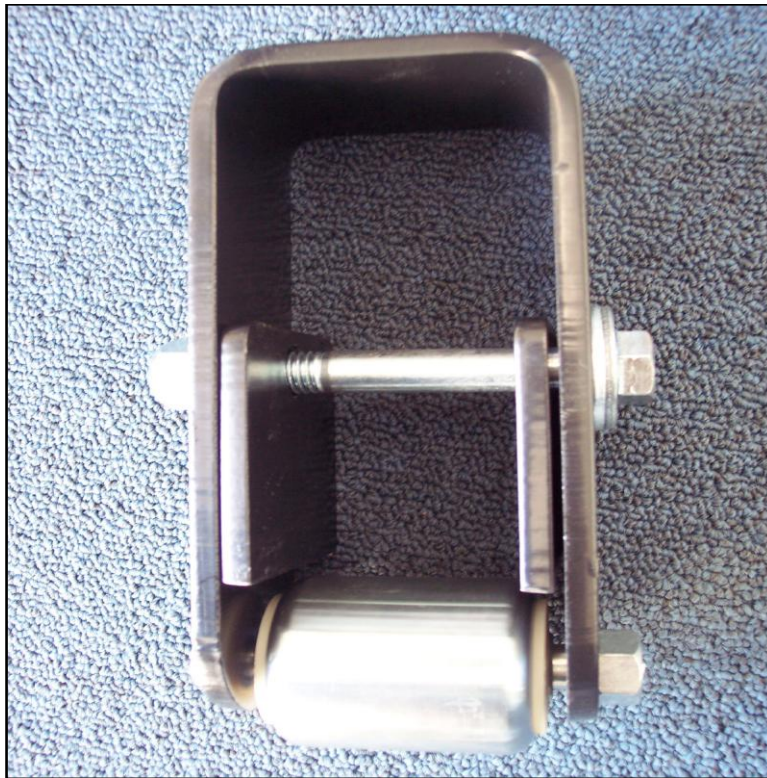


PHOTO B



INSTALLATION PHOTOS

PHOTO C



BOXED BY:

BOX WEIGHT:



TRUE FRAME MOUNTED CAMPER TIE DOWNS

IMPORTANT OWNER-OPERATOR INSTALLATION INSTRUCTIONS

A7100

SUPERTRUSS SKID WHEEL

A7100 PARTS INVENTORY

- 1- SKID WHEEL ASSEMBLY W/ AXLE BOLT & NUT
- 2 - 1/2" x 4" GRD5 HEX BOLT
- 2 - 1/2" STOVER LOCKNUT
- 2 - 1/4" x 2 1/2" x 2 3/4" SHIM PLATES
- 8 - 1/2" FLATWASHERS**

The Super Truss skid wheel replaces the outer most collar on the Super Truss extension as seen in Photo B and C.

The Super Truss skid wheel will be assembled and installed as seen is Photo A.

Tighten both the upper 1/2" x 4" hex bolt and lower skid wheel axle bolt to 50 ft lbs.

The skid wheel axle can be lubricated with wheel bearing grease through the grease zerk located on the hex head of the axle bolt.

INSTALLATION PHOTOS

PHOTO A

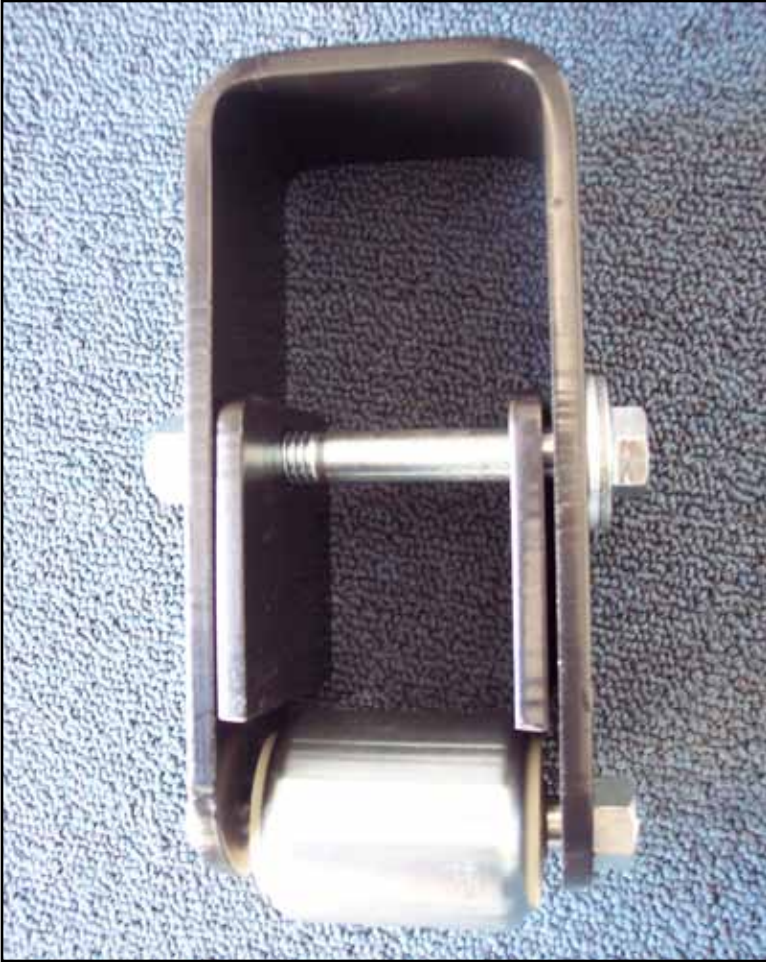


PHOTO B



INSTALLATION PHOTOS

PHOTO C



RECOMMENDED TRUCK CAMPER

INSTALLATION INSTRUCTIONS

When securing any heavy load (especially a camper) in your truck bed, your front tiedown points should pull the load forward as much as possible. Some camper anchor points may differ with different manufacturers, as well as the camper jack mounting locations. Your TorkLift tiedown inserts have offset triangular brackets to increase the angle of pull. These are designed to be used in the front facing forward, and the rear facing rearward but can be used in either front or rear. These recommendations are to be considered and followed as a basic rule of thumb. Obviously there will be some applications where this may not be possible. At a minimum, if opposite pull of both front and rear tiedowns cannot be achieved for whatever reason, you should have at least a forward pull at the front or rear location.

If your camper does not come with rubber bumpers on the front lower portion of the camper, installing rubber bumpers (TorkLift has Rubber Bumpers available P/N A7001) or using a block of wood such as a 2 x 4 in the bed will prevent the camper from damaging the front bulkhead of the truck bed.

Minor movement (or settling) can occur in some incidental harsh driving conditions (on or off road). A rubber bed mat is not a requirement to maintain the lifetime warranty on a Torklift system, but a strong recommendation simply as a safety precaution to protect the truck bed, the bottom of the camper and to give the camper additional support.

INSTRUCTIONS FOR FINISH MAINTENANCE

OF TORKLIFT PRODUCTS

POWDER COATED STEEL:

To keep your Torklift products looking good follow these guidelines. All steel powder coated Torklift products are sandblasted for maximum adhesion and use a high quality industrial urethane based powder coat. Due to the extreme, harsh, undercar environment that your Torklift products live in, (consistently sprayed with corrosive road chemicals such as salt, and road debris), **Torklift does not warranty the power coated finish.**

To minimize corrosion from these factors on powder coated steel products, Torklift recommends regularly cleaning and inspecting the powder coated surface and touching up any affected areas with an enamel or urethane based aerosol paint product. If there are any areas of surface rust, there are also aerosol spray rust converters available on the market that can be used **as a preparation to touch-up paint application.** These finish maintenance products are available at any automotive parts supplier.

POLISHED STAINLESS STEEL :

Torklift utilizes quality grade 304 stainless steel in our stainless steel polished products. 304 stainless steel is well known for its anti-corrosive properties. However, in some environments such as coastal regions or when coming in contact with some road chemicals, corrosion may occur.

For a quick clean simply use WD40 and a cloth rag. We also recommend occasional polishing of our polished stainless products to maintain their **attractive finish.** Use an **approved stainless steel chrome or aluminum mag wheel polish** cleaning product which can be purchased from any automotive parts supplier.