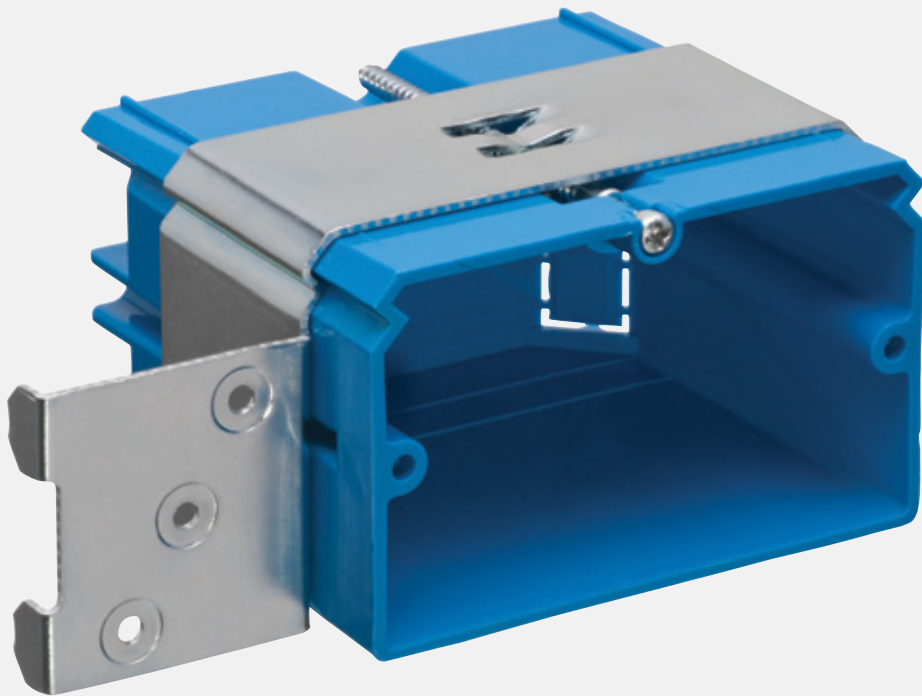


PRODUCT SHEET

Carlon® Adjust-A-Box®
horizontal non-metallic electrical box
Saves labor time and costs



Carlton® Adjust-A-Box® horizontal non-metallic electrical box

Easy to use for remodel or new work applications.

Fast, easy installation



01 Clip the Adjust-A-Box metal bracket onto the stud for square, secure mounting.



02 Turn the Adjust-A-Box screw after installation to bring the box flush with the wall surface.

Adjustability for different wall thickness with the simple turn of a screw has made the Carlton Adjust-A-Box line a favorite of electrical installers everywhere.

The latest addition to the Adjust-A-Box family puts a new twist on an old favorite with its horizontal orientation — perfect for mounting kitchen and baseboard receptacles.

The single-gang, large-capacity, non-metallic box features a metal bracket for horizontal mounting that clips onto any standard wood or metal stud. The box mounts squarely and securely without screws or nails, but mounting holes are provided for non-standard studs or where more secure mounting is required.

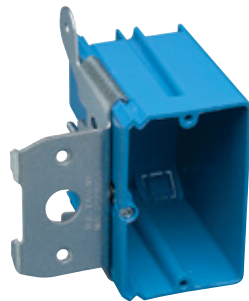
- Preset at ½", adjustable from 0" to 1⅞" to accommodate varying wall thicknesses
- Horizontal orientation for kitchen, bath and baseboard receptacles
- Large, 21 cu. in. capacity for duplex or GFCI receptacles
- Carlton blue PVC for easy identification of power
- Ideal for use with ceramic tile and baseboards for new or rework
- Blends well with rectangular tile
- Ideal for use in limited-space multi-level islands

Carlton Adjust-A-Box horizontal non-metallic electrical box

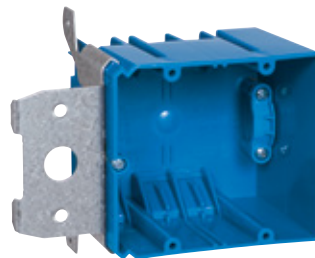


Cat. no.	Description	Dimensions (L x W x H) (in.)	Capacity (cu. in.)	Std. pkg. qty.	UPC no.
B121ADJH	Horizontal one-gang	3.4 x 5.4 x 2.3	21	12	034481-01138

Other Carlton Adjust-A-Box non-metallic electrical boxes



B121ADJ one-gang



B234ADJC two-gang



B349ADJ three-gang