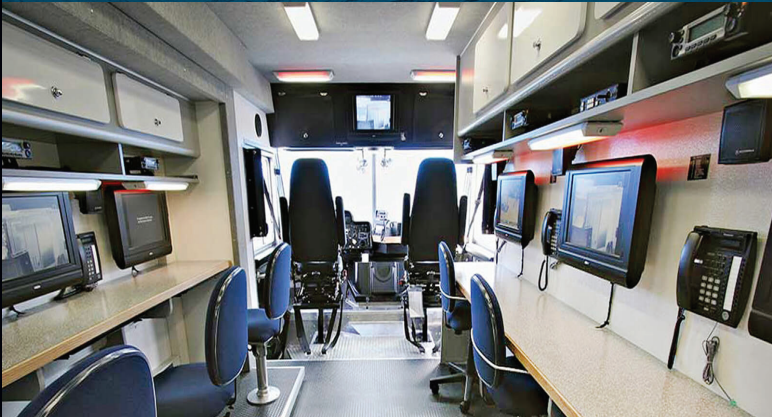




# Thin-Lite®

*Low Voltage Premium Lighting*



# LED Lighting

# Thin-Lite®

*Low Voltage Premium Lighting*



# WELCOME

For almost 50 years, Thin-Lite has successfully pioneered innovative and quality lighting solutions for a diverse group of industry applications. We take great pride in offering the highest levels of customer service to our dealers and distributors, and we are readily available to assist in identifying the best solutions for your specific lighting needs.

Thin-Lite offers lighting products for the RV, marine, solar, commercial truck, trailer, emergency trailer, agriculture, mobile, and industrial office markets. Please browse our online catalog for detailed product specifications, available fixtures or to cross-reference applications for usage.

Shipping policies can be viewed in the resource selection of our website and general information regarding our lighting fixtures, and products are available in the F.A.Q. section.

Lighting products by Thin-Lite are proudly manufactured in America with domestic and imported parts.

## ABOUT US

In 1969, Thin-Lite Corporation pioneered fluorescent lights for the RV market. Sure, there were other fluorescents on the market, but they couldn't match the durability and brightness of Thin-Lite.

We are proud to say that Thin-Lite was the first in the industry to secure U.L. listing of 12 volt DC fluorescent for marine and RV's. Look for familiar U.L. and C-UL insignias on our packages.

Early on, Thin-Lite became recognized and in demand around the world. Whether in the Sahara, a jungle in South America, atop a remote peak in the Alps, or on a farm in America's Heartland, Thin-Lite's products were dependable and efficient. In appreciation of the outstanding representation of American know-how, President Reagan awarded the Presidential "E" Award for Excellence in exports to Thin-Lite in 1984.

For years Thin-Lite has been a leader in the development and manufacturing of 12 volt DC and LED lighting for industry, trucking and recreational vehicles. Using superior components, our all aluminum housings are corrosion and rust resistant. Over 300 models are available to meet your lighting needs at work or play. Our Thin-Lite engineers are not content just sitting on their laurels. We have continued to test and refine the latest technology to meet tomorrow's lighting needs.



*Dave Szymanek, (May 1, 1943 - Dec. 31, 2010), President of Thin-Lite Corporation, at the time, proudly accepts the "E" Award for Excellence in Exports from President Ronald Reagan in the Rose Garden of the White House in 1984.*

With over 10 million Thin-Lite products in use worldwide, hearing from our customers is a given. We have received accolades from owners, manufacturers, and dealers for both the quality of our products and our after-sales service.

Our dedicated and talented employees continue to produce the finest quality and most efficient products for a variety of lighting needs worldwide. This includes fixtures using LED's, standard and full color spectrum fluorescent tubes. Custom features are available and we can design and build to customer requirements.

# CONTENT

Model	Page
3000 Ultra-Thin Elegant Series Surface Mount	1
Circuline Surface Mount	2
Dual Surface Mount	3
115 Single Surface Mount	4
130 Series Dual Surface Mount	5
160 Outdoor Surface Mount	6
170 Low Profile Surface Mount	7
170 Low Profile Extended Length	8
180 Industrial & Commercial Surface Mount	9
194 Commercial Truck series Surface Mount	10
190 HI-Efficiency Surface Mount	11
190 HI-Efficiency Extended Length	12
410 Ultra-Thin Elegant Surface Mount	13
610 Elegant Surface Mount	14
620 Series Elegant Surface Mount	15
650 Series Elegant Surface Mount	16
710 Commercial Grade Recessed Mount	17
718XLP Commercial Grade Recessed Mount	18
730 Euro-Style Recessed Mount	19
740 Commercial Grade Recessed Mount	20
760 Euro-Style Recessed Mount	21
Specialty VFI Series	22
Interior LED Dome Lights Series	23
RFI Suppressant Electronic Inverter Ballasts	24
Warranty	25
How to Program your LED brightness Level	26

## OEM/DIST LED NEW 3000 LIGHTBAR SERIES COMPACT FIXTURE

Thin-Lite's LED 3000 aluminum finish compact fixtures are surface mounted with an opaque lens. They are a multi-purpose light and easy to install. These lights create glowing bands on walls, ceilings, mirrors, work surfaces and under cabinets and provide a "custom made" look.

Fixtures are weather resistant and are available in RED LED\* lights.

Standard lengths are from 10", 12", 18", 23", 33" and 43".

Continuous flexible LED strips.

These lights carry a 2-Year Limited Warranty and are 12VDC with color temperature of 6000 - 6500 Kelvins.



Model No. LED3010CM, LED3010CRM	LED3012CM, LED3012CRM	LED3018CM, LED3018CRM	LED3023CM, LED3023CRM	LED3033CM, LED3033CRM	LED3043CM, LED3043CRM	
Watts	4.4	5.3	7.8	10.1	13.4	18
Amp Draw @12VDC	0.37	0.44	0.65	0.84	1.12	1.5
Equivalent Lumens	427	530	780	1010	1340	1800
Dimensions	10"L X 1.5"W X 5/16"	12"L X 1.5"W X 5/16"	18"L X 1.5"W X 5/16"	23"L X 1.5"W X 5/16"	33"L X 1.5"W X 5/16"	43"L X 1.5"W X 5/16"
Weight	0.15 lbs.	0.20 lbs.	0.30 lbs.	0.40 lbs.	0.55 lbs.	0.70 lbs.
Case Qty:	10	10	10	10	10	10

\*CM-White and CRM-Red

## LED PREMIUM VERSION OF THE ORIGINAL FLUORESCENT CIRCULINE LIGHT SURFACE MOUNT FIXTURES

Thin-Lite's Circuline series offer years of reliable, virtually maintenance free service while delivering maximum light output at minimal amp draw. Designs are complemented by opaque white or acrylic diffuser lenses, white powder coated aluminum housings, and attractive wood grain trim.

Model LED109CP and Model LED109CXLP have round housings.

Model LED109SP is supplied with square housing.

One Touch dimming switch with unlimited dimming levels, Patented "Memory Set" technology retains user programmed brightness settings.

LED life of 100,000 Hrs., Wide Voltage Range Input of 8 -30 VDC, Over Voltage Protection that resets at 28 VDC are standard. Color Rendering Index (CRI) 90.

Warranty: 3 years.

Also Available in Fluorescent.



	Model No. LED109SP			LED109CP, LED109CXLP, LED109CAXLP		
Color Temperature	**3000K	4000K	5000K	**3000K	4000K	5000K
Watts	0/9.6			0/9.6		
No. of LEDs	48			48		
Amp Draw @12VDC	0/0.80			0/0.80		
Equivalent Lumens	0/1785	0/1920	0/2304	0/1785	0/1920	0/2304
Dimensions	9.5" Square X 1.75"			9.5" Dia. X 1.75"		
Weight	0.70 lbs.			0.70 lbs.		
Lens P/N	D-109S			D-109C, D-109CXL, D109CAXL		
Case Qty:	20			20		

**\*\*3000K Special Orders only.**

## LED PREMIUM VERSION OF THE ORIGINAL FLUORESCENT DUAL LIGHT SURFACE MOUNT FIXTURES

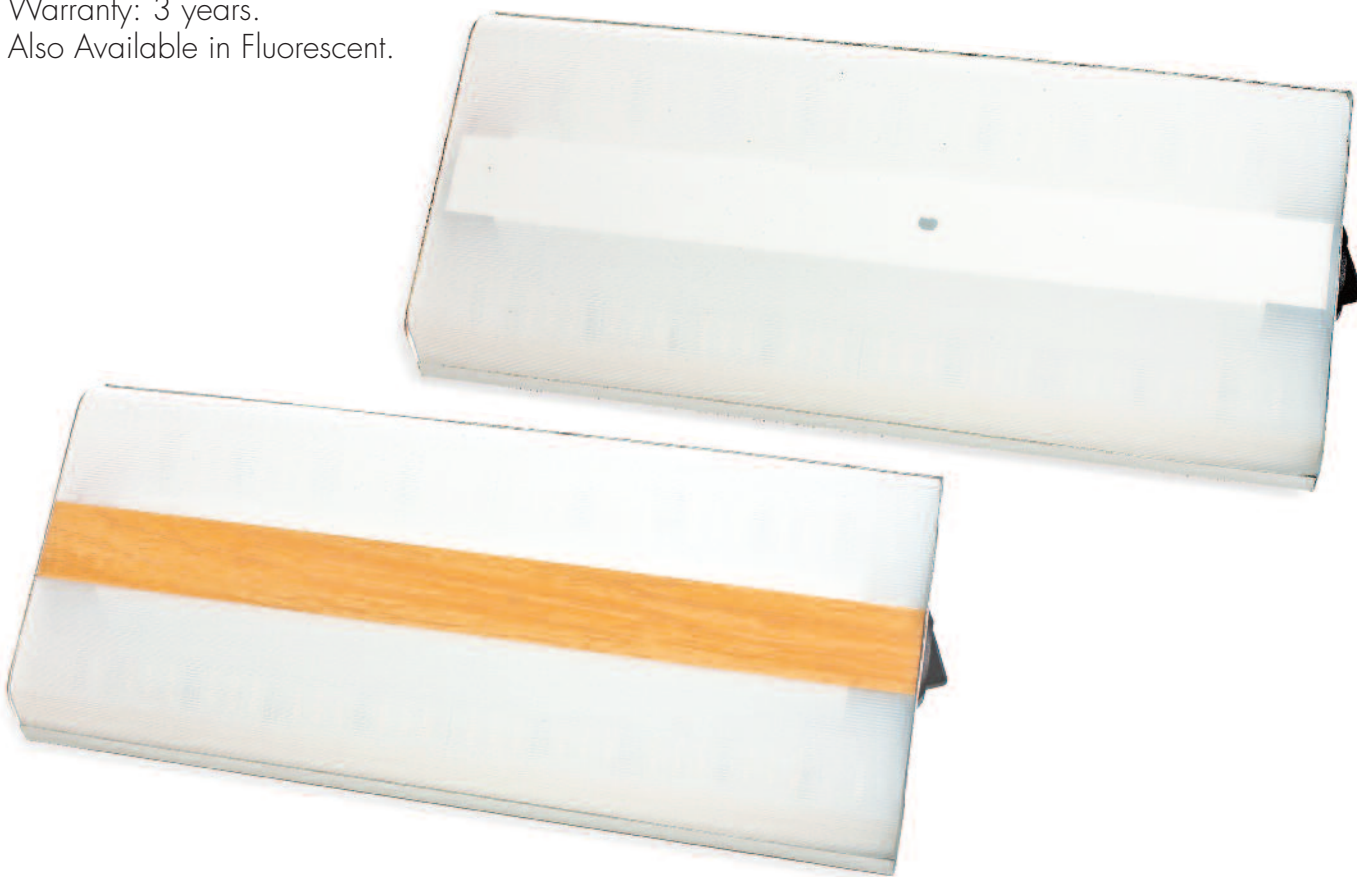
Thin-Lite's LED Dual surface mount fixtures are designed for high light output with low amp draw. They offer years of reliable, virtually maintenance free service. Equipped with Non-yellowing diffuser lens with or without wood grained trim and white powder coated aluminum housings. One Touch dimming switch with unlimited dimming levels, Patented "Memory Set" technology retains user programmed brightness settings.

LED life of 100,000 Hrs., Wide Voltage Range Input of 8 -30 VDC, Over Voltage Protection that resets at 28 VDC are standard.

Color Rendering Index (CRI) 90.

Warranty: 3 years.

Also Available in Fluorescent.



Model No.	LED112P, LED112NTP			LED116P, LED116NTP			LED126P		
Color Temperature	**3000K	4000K	5000K	**3000K	4000K	5000K	**3000K	4000K	5000K
Watts	0/9.6			0/14.4			0/19.2		
No. of LEDs	48			72			96		
Amp Draw @12VDC	0/0.80			0/1.25			0/1.60		
Equivalent Lumens	0/1785	0/1920	0/2304	0/2745	0/2880	0/3264	0/3705	0/3840	0/4224
Dimensions	12.25"L X 5.5"W x 1"			18"L x 5.625"W x 1.375"			21.312"L X 5.5"W x 1"		
Weight	0.60 lbs.			0.90 lbs.			0.95 lbs.		
Lens P/N	D-112, D-112NT			D-116, D116NT			D-126		
Case Qty:	20			20			20		

**\*\*3000K Special Orders only.**



## LED PREMIUM VERSION OF THE ORIGINAL FLUORESCENT SINGLE LIGHT SURFACE MOUNT FIXTURES

Thin-Lite's LED surface mount fixtures are designed for high light output with low amp draw. They offer years of reliable, virtually maintenance free service. Equipped with Non-yellowing diffuser lens with or without wood grained trim and white powder coated aluminum housings.

LED115P comes with white or black housing.

One Touch dimming switch with unlimited dimming levels, Patented "Memory Set" technology retains user programmed brightness settings.

LED life of 100,000 Hrs., Wide Voltage Range Input of 8 -30 VDC, Over Voltage Protection that resets at 28 VDC are standard.

Color Rendering Index (CRI) 90.

Warranty: 3 years.

Also Available in Fluorescent.



Model No. LED115P, LED115BKP			
Color Temperature	**3000K	4000K	5000K
Watts	0/7.2		
No. of LEDs	36		
Amp Draw @12VDC	0/0.60		
Equivalent Lumens	0/1065	0/1200	0/1584
Dimensions	18"L x 4"W x 1.375		
Weight	0.60 lbs.		
Lens P/N	D-115		
Case Qty:	20		

**\*\*3000K Special Orders only.**

## LED PREMIUM VERSION OF THE 130 SERIES SURFACE MOUNT FIXTURES

Thin-Lite's LED 130 series features powder coated aluminum housings and acrylic diffuser lens. They deliver even, non-glare, lighting to ensure a stress free work environment. No hot-spots or eye strain. Decorative Cracked Ice lenses and gold housings are supplied on Model 130CI and Model 134CI. One Touch dimming switch with unlimited dimming levels, Patented "Memory Set" technology retains user programmed brightness settings.

LED life of 100,000 Hrs., Wide Voltage Range Input of 8 -30 VDC, Over Voltage Protection that resets at 28 VDC are standard.

Color Rendering Index (CRI) 90.

Warranty: 3years.

Also Available in Fluorescent.



Model No.	LED130WP, LED130CIP, LED130WCIP			LED134WP, LED134CIP, LED134WCIP			LED138WP, LED138GP		
Color Temperature	**3000K	4000K	5000K	**3000K	4000K	5000K	**3000K	4000K	5000K
Watts	0/9.6			0/14.4			0/19.2		
No. of LEDs	48			72			96		
Amp Draw @12VDC	0/0.80			0/1.25			0/1.25		
Equivalent Lumens	0/1785	0/1920	0/2304	0/2745	0/2880	0/3264	0/3705	0/3840	0/4224
Dimensions	12" L x 5.375"W x 1.75"			18" L x 5.375"W x 1.75"			24" L x 5.375"W x 1.75"		
Weight	0.80 lbs.			1.20 lbs.			1.60 lbs.		
Lens P/N	D-130W, D-130CI			D-134W, D-134CI			D-138W		
Case Qty:	20			10			20		

**\*\*3000K Special Orders only.**

## LED PREMIUM VERSION OF THE 160 OUTDOOR SURFACE MOUNT FIXTURES-WEATHERPROOF

Thin-Lite's LED 160-1 & 160-2 Outdoor surface mount weatherproof fixtures provide efficient lighting for side and rear mounting. They provide superior security and area lighting for alternative energy sites, entry doors, and toy hauler ramps. All models are supplied with clear or amber diffuser lens. One Touch dimming switch with unlimited dimming levels, Patented "Memory Set" technology retains user programmed brightness settings.

LED life of 100,000 Hrs., Wide Voltage Range Input of 8 -30 VDC, Over Voltage Protection that resets at 28 VDC are standard.

Color Rendering Index (CRI) 90.

Warranty: 3 years.

Also Available in Fluorescent.



Model No.	LED1607CP, LED1607AP			LED162CP, LED162AP			LED163CP, LED163AP			LED167CP, LED167AP		
Color Temperature	**3000K	4000K	5000K	**3000K	4000K	5000K	**3000K	4000K	5000K	**3000K	4000K	5000K
Watts	0/4.8			0/9.6			0/7.2			0/14.4		
No. of LEDs	24			48			36			72		
Amp Draw @12VDC	0/0.40			0/0.80			0/0.60			0/1.25		
Equivalent Lumens	0/825	0/960	0/1344	0/1785	0/1920	0/2304	0/1305	0/1440	0/1824	0/2745	0/2880	0/3264
Dimensions	7.750"L x 3.80"W x 2.75"			12.875"L x 3.80"W x 2.75"			18.5"L x 3.80"W x 2.75"			36.5"L x 3.80"W x 2.75"		
Weight	1.00 lbs.			1.10 lbs.			1.70 lbs.			3.30 lbs.		
Lens P/N	D-1607C, D-1607A			D-162C, D-162A			D-163C, D-163A			D-167C, D-167A		
Case Qty:	10 *Not avail. in Fluorescent			10			10			10		

\*\*3000K Special Orders only.

## LED PREMIUM VERSION OF THE 170 LOW PROFILE SURFACE MOUNT FIXTURES

Thin-Lite's LED 170 Low Profile surface mount fixtures provide efficient lighting for areas that require light but have limited mounting space. They are easy to install and fit nicely under cabinets and around mirrors. Clear Acrylic or White diffuser lens. All fixtures are available with Black or Oyster End-caps. One Touch dimming switch with unlimited dimming levels, Patented "Memory Set" technology retains user programmed brightness settings.

LED life of 100,000 Hrs., Wide Voltage Range Input of 8 -30 VDC, Over Voltage Protection that resets at 28 VDC are standard.

Color Rendering Index (CRI) 90.

Warranty: 3 years.

Also Available in Fluorescent.



Model No. LED1713P, LED1713WP, LED1713BKP, LED1713BKWP	LED1718P, LED1718WP, LED1718BKP, LED1718BKWP			LED1723P, LED1723WP, LED1723BKP, LED1723BKWP					
Color Temperature	**3000K	4000K	5000K	**3000K	4000K	5000K	**3000K	4000K	5000K
Watts	0/4.8			0/7.2			0/9.6		
No. of LEDs	24			36			48		
Amp Draw @12VDC	0/0.40			0/0.60			0/0.80		
Equivalent Lumens	0/825	0/960	0/1344	0/1304	0/1440	0/1824	0/1785	0/1920	0/2304
Dimensions	13.25" L x 2.5"W x 1.25"			18.25" L x 2.5"W x 1.25"			23.25" L x 2.5"W x 1.25"		
Weight	0.60 lbs.			0.70 lbs.			0.90 lbs.		
Lens P/N	D-1713, D-1713W			D-1718, D-1718W			D-1723, D-1723W		
Case Qty:	20			20			20		

\*\*3000K Special Orders only.

## LED PREMIUM VERSION OF THE 170 LOW PROFILE EXTENDED LENGTH FIXTURE

Thin-Lite's LED 170 Low Profile surface mount fixtures provide efficient lighting for areas that require light but have limited mounting space. They are easy to install and fit nicely under cabinets and around mirrors. Clear Acrylic or White diffuser lens. All fixtures are available with Black or Oyster End-caps. One Touch dimming switch with unlimited dimming levels, Patented "Memory Set" technology retains user programmed brightness settings.

LED life of 100,000 Hrs., Wide Voltage Range Input of 8 -30 VDC, Over Voltage Protection that resets at 28 VDC are standard.

Color Rendering Index (CRI) 90.

Warranty: 3 years.

Also Available in Fluorescent.



Model No.	LED1733P, LED1733WP LED1733BKP, LED1733BKWP			LED1743P, LED1743WP LED1743BKP, LED1743BKWP			LED1748P, LED1748WP LED1748BKP, LED1748BKWP		
Color Temperature	**3000K	4000K	5000K	**3000K	4000K	5000K	**3000K	4000K	5000K
Watts	0/14.4			0/19.2			0/19.2		
No. of LEDs	72			96			96		
Amp Draw @12VDC	0/1.25			0/1.25			0/1.25		
Equivalent Lumens	0/2745	0/2880	0/3264	0/3705	0/3840	0/4224	0/3705	0/3840	0/4224
Dimensions	33.25" L x 2.5"W x 1.25"			43.25" L x 2.5"W x 1.25"			48.25" L x 2.5"W x 1.25"		
Weight	1.25 lbs.			1.60 lbs.			1.80 lbs.		
lens P/N	D-1733, D-1733W			D-1743, D-1743W			D-1748W		
Case Qty:	20			20			20		

**\*\*3000K Special Orders only.**

## LED PREMIUM VERSION OF THE 180 INDUSTRIAL & COMMERCIAL SURFACE MOUNT FIXTURES

Thin-Lite's LED 180 Industrial & Commercial surface mount fixtures provide efficiency for use in commercial, industrial and even residential applications. They are easy to install where decorative styling and durability are desired. Clear Acrylic diffuser lens. Oyster or Black end caps available. One Touch dimming switch with unlimited dimming levels, Patented "Memory Set" technology retains user programmed brightness settings.

LED life of 100,000 Hrs., Wide Voltage Range Input of 8 -30 VDC, Over Voltage Protection that resets at 28 VDC are standard.

Color Rendering Index (CRI) 90.

Warranty: 3 years.

Also Available in Fluorescent.



	Model No. LED186P			LED183P		
Color Temperature	**3000K	4000K	5000K	**3000K	4000K	5000K
Watts	0/14.4			0/19.2		
No. of LEDs	72			96		
Amp Draw @12VDC	0/1.25			0/1.25		
Equivalent Lumens	0/2745	0/2880	0/3264	0/3705	0/3840	0/4224
Dimensions	18.125"L x 3.625"W x 3.5"			48.125"L x 3.625"W x 3.5"		
Weight	2.0 lbs.			3.30 lbs.		
Lens P/N	D-186			D-183		
Case Qty:	10			10		

**\*\*3000K Special Orders only.**

## LED PREMIUM VERSION OF THE 194 COMMERCIAL TRUCK SERIES FIXTURES

Thin-Lite's LED 194 Commercial Truck series heavy duty light fixtures provide efficient lighting for commercial trucks. Model LED194P. Oyster or Black end caps available. Easy to install. One Touch dimming switch with unlimited dimming levels, Patented "Memory Set" technology retains user programmed brightness settings.

LED life of 100,000 Hrs., Wide Voltage Range Input of 8 -30 VDC, Over Voltage Protection that resets at 28 VDC are standard.

Color Rendering Index (CRI) 90.

Warranty: 3 years.

Also Available in Fluorescent.



Model No. LED194P, LED194BKP			
Color Temperature	**3000K	4000K	5000K
Watts	0/14.4		
No. of LEDs	72		
Amp Draw @12VDC	0/1.25		
Equivalent Lumens	0/2745	0/2880	0/3264
Dimensions	18.25"L x 5.625"W x 1.625"		
Weight	1.50 lbs.		
Lens P/N	D-194WT		
Case Qty:	10		

**\*\*3000K Special Orders only.**

## LED PREMIUM VERSION OF THE 190 HI-EFFICIENCY SURFACE MOUNT FIXTURES

Thin-Lite's LED 190 HI-Efficiency surface mount fixtures provide efficient and compact alternatives. They are easy to install and used in applications which include commercial and industrial vehicles. Clear Acrylic diffuser lens. All fixtures are available with Black or Oyster End-caps. One Touch dimming switch with unlimited dimming levels, Patented "Memory Set" technology retains user programmed brightness settings.

LED life of 100,000 Hrs., Wide Voltage Range Input of 8 -30 VDC, Over Voltage Protection that resets at 28 VDC are standard.

Color Rendering Index (CRI) 90.

Warranty: 3 years.

Also Available in Fluorescent.



Model No.	LED1913P, LED1913BKP			LED1918P, LED1918BKP			LED1923P, LED1923BKP		
Color Temperature	**3000K	4000K	5000K	**3000K	4000K	5000K	**3000K	4000K	5000K
Watts	0/4.8			0/7.2			0/9.6		
No. of LEDs	24			36			48		
Amp Draw @12VDC	0/0.40			0/0.60			0/0.80		
Equivalent Lumens	0/825	0/960	0/1344	0/1304	0/1440	0/1824	0/1785	0/1920	0/2304
Dimensions	13.25" L x 2.5"W x 2.25"			18.25" L x 2.5"W x 2.25"			23.25" L x 2.5"W x 2.25"		
Weight	0.70 lbs.			0.90 lbs.			1.10 lbs.		
Lens P/N	D-1913			D-1918			D-1923		
Case Qty:	20			20			20		

\*\*3000K Special Orders only.



## LED PREMIUM VERSION OF THE 190 HI-EFFICIENCY EXTENDED LENGTH FIXTURE

Thin-Lite's LED 190 HI-Efficiency surface mount fixtures provide efficient and compact alternatives. They are easy to install and used in applications which include commercial and industrial vehicles. Clear Acrylic diffuser lens. All fixtures are available with Black or Oyster End-caps. One Touch dimming switch with unlimited dimming levels, Patented "Memory Set" technology retains user programmed brightness settings.

LED life of 100,000 Hrs., Wide Voltage Range Input of 8 -30 VDC, Over Voltage Protection that resets at 28 VDC are standard.

Color Rendering Index (CRI) 90.

Warranty: 3 years.

Also Available in Fluorescent.



Model No. LED1933P, LED1933BKP				LED1943P, LED1943BKP		
Color Temperature	**3000K	4000K	5000K	**3000K	4000K	5000K
Watts	0/14.4			0/19.2		
No. of LEDs	72			96		
Amp Draw @12VDC	0/1.25			0/1.25		
Equivalent Lumens	0/2745	0/2880	0/3264	0/3705	0/3840	0/4224
Dimensions	33.25"L x 2.5"W x 2.25"			43.25"L x 2.5"W x 2.25"		
Weight	1.45 lbs.			1.60 lbs.		
Lens P/N	D-1933			D-1943		
Case Qty:	20			10		

**\*\*3000K Special Orders only.**

## LED PREMIUM 410 ULTRA-THIN ELEGANT SURFACE MOUNT FIXTURES

Thin-Lite's LED 410 Elegant surface mount fixtures provide efficient lighting for elegant interiors. They are easy to install in ceilings and under cabinets. They provide the "custom made" look.

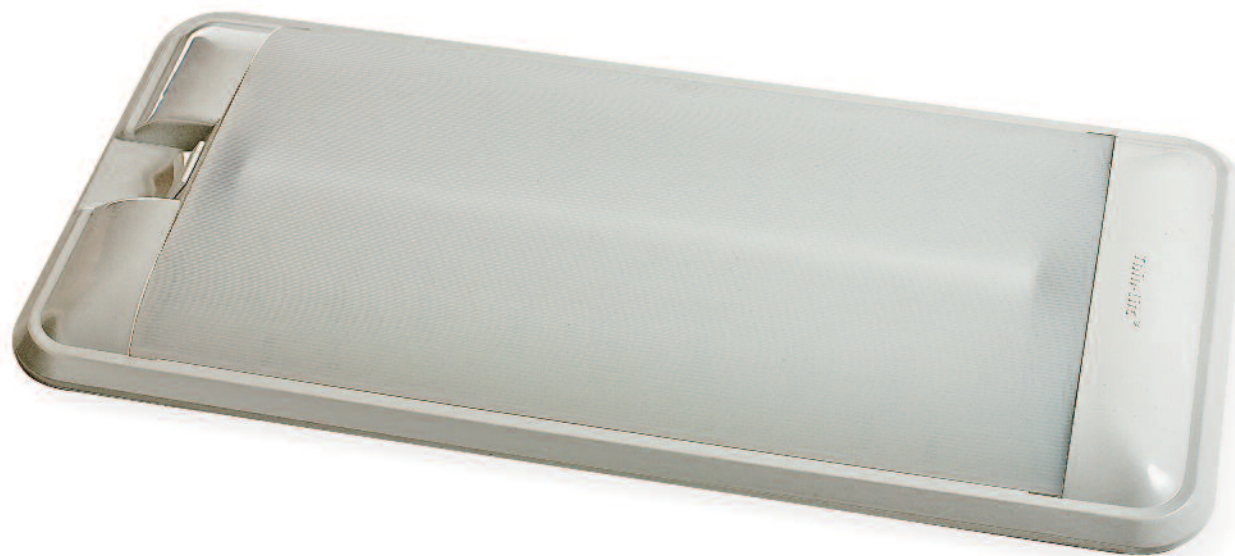
Equipped with Non-yellowing white diffuser lens.

One Touch dimming switch with unlimited dimming levels, Patented "Memory Set" technology retains user programmed brightness settings.

LED life of 100,000 Hrs., Wide Voltage Range Input of 8 -30 VDC, Over Voltage Protection that resets at 28 VDC are standard.

Color Rendering Index (CRI) 90.

Warranty: 3 years.



	Model No. LED412P			LED416P		
Color Temperature	**3000K	4000K	5000K	**3000K	4000K	5000K
Watts	0/9.6			0/14.4		
No. of LEDs	48			72		
Amp Draw @12VDC	0/0.80			0/1.25		
Equivalent Lumens	0/1785	0/1920	0/2304	0/2745	0/2880	0/3264
Dimensions	16.843" L x 7.30"W x 0.87"			22.652" L x 7.30"W x 0.87"		
Weight	1.00 lbs.			1.40 lbs.		
Lens P/N	D-762			D-766		
Case Qty:	12			12		

**\*\*3000K Special Orders only.**

## LED PREMIUM VERSION OF THE 610 ELEGANT SURFACE MOUNT FIXTURES

Thin-Lite's LED 610 Elegant surface mount fixtures provide efficient lighting for elegant interiors. They are easy to install in ceilings and under cabinets. They provide the "custom made" look. Equipped with Non-yellowing diffuser lens. One Touch dimming switch with unlimited dimming levels, Patented "Memory Set" technology retains user programmed brightness settings.

LED life of 100,000 Hrs., Wide Voltage Range Input of 8 -30 VDC, Over Voltage Protection that resets at 28 VDC are standard.

Color Rendering Index (CRI) 90.

Warranty: 3 years.

Also Available in Fluorescent.



	Model No. LED612P, LED612R/WIP LED612R/W2P			LED616P, LED616R/WIP, LED616R/W2P		
Color Temperature	**3000K	4000K	5000K	**3000K	4000K	5000K
Watts	0/9.6			0/14.4		
No. of LEDs	48			72		
Amp Draw @12VDC	0/0.80			0/1.25		
Equivalent Lumens	0/1785	0/1920	0/2304	0/2745	0/2880	0/3264
Dimensions	14.937" L x 5.53"W x 1.57"			20.625" L x 5.53"W x 1.57"		
Weight	1.30 lbs.			1.70 lbs.		
Lens P/N	D-612			D-616		
Case Qty:	20			10		

**\*\*3000K Special Orders only.**

## LED PREMIUM VERSION OF THE 620 ELEGANT SURFACE MOUNT FIXTURES

Thin-Lite's LED low profile 620 series surface mount fixtures are designed for high light output with low amp draw. They are 1.5" deep, lightweight with contoured design for mounting on curved or flat surfaces. They provide the "custom made" look. Equipped with Non-yellowing diffuser lens. One Touch dimming switch with unlimited dimming levels, Patented "Memory Set" technology retains user programmed brightness settings.

LED life of 100,000 Hrs., Wide Voltage Range Input of 8 -30 VDC, Over Voltage Protection that resets at 28 VDC are standard.

Color Rendering Index (CRI) 90.

Warranty: 3 years.

Also Available in Fluorescent.



	Model No. LED622P			LED626P		
Color Temperature	**3000K	4000K	5000K	**3000K	4000K	5000K
Watts	0/9.6			0/14.4		
No. of LEDs	48			72		
Amp Draw @12VDC	0/0.80			0/1.25		
Equivalent Lumens	0/1785	0/1920	0/2304	0/2745	0/2880	0/3264
Dimensions	14"L x 5.6"W x 1.5"			19.7"L x 5.6"W x 1.5"		
Weight	0.80 lbs.			1.10 lbs.		
Lens P/N	D-622			D-626		
Case Qty:	20			10		

**\*\*3000K Special Orders only.**

## LED PREMIUM VERSION OF THE 650 ELEGANT SURFACE MOUNT

Thin-Lite's LED low profile 650 series surface mount fixtures are designed for high light output with low amp draw. They are 1.5" deep, lightweight with contoured design for mounting on curved or flat surfaces. They provide the "custom made" look. Equipped with Non-yellowing diffuser lens. One Touch dimming switch with unlimited dimming levels, Patented "Memory Set" technology retains user programmed brightness settings.

LED life of 100,000 Hrs., Wide Voltage Range Input of 8 -30 VDC, Over Voltage Protection that resets at 28 VDC are standard.

Color Rendering Index (CRI) 90.

Warranty: 3 years.

Also Available in Fluorescent.



	Model No. LED652P			LED656P		
Color Temperature	**3000K	4000K	5000K	**3000K	4000K	5000K
Watts	0/9.6			0/14.4		
No. of LEDs	48			72		
Amp Draw @12VDC	0/0.80			0/1.25		
Equivalent Lumens	0/1785	0/1920	0/2304	0/2745	0/2880	0/3264
Dimensions	16.843" L x 7.30"W x 1.56"			22.652" L x 7.30"W x 1.56"		
Weight	1.00 lbs.			1.40 lbs.		
Lens P/N	D-652			D-656		
Case Qty:	20			12		

**\*\*3000K Special Orders only.**

## LED PREMIUM VERSION OF THE 710 COMMERCIAL GRADE RECESSED MOUNT

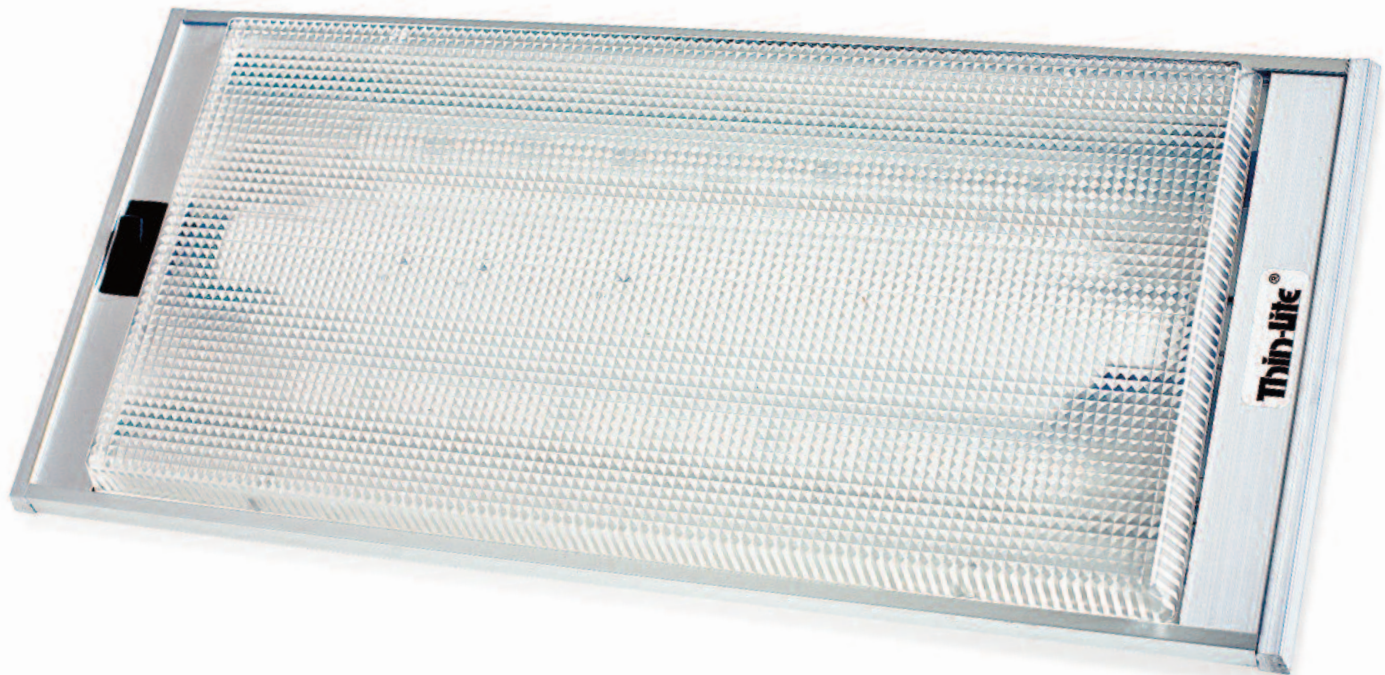
Thin-Lite's LED 710 Commercial Grade recessed mount fixtures provide efficient lighting. They are easy to install in ceilings and under cabinets. They provide the "custom made" look. Equipped with acrylic diffuser lens. One Touch dimming switch with unlimited dimming levels, Patented "Memory Set" technology retains user programmed brightness settings.

LED life of 100,000 Hrs., Wide Voltage Range Input of 8 -30 VDC, Over Voltage Protection that resets at 28 VDC are standard.

Color Rendering Index (CRI) 90.

Warranty: 3 years.

Also Available in Fluorescent.



	Model No. LED712XLP			LED716XLP		
Color Temperature	**3000K	4000K	5000K	**3000K	4000K	5000K
Watts	0/9.6			0/14.4		
No. of LEDs	48			72		
Amp Draw @12VDC	0/0.80			0/1.25		
Equivalent Lumens	0/1785	0/1920	0/2304	0/2745	0/2880	0/3264
Dimensions	14.75"L x 6.625"W x 2.00"			20.625"L x 6.625"W x 2.00"		
Opening Dimensions	14.25"L x 5.313"W x 1.25"			20.125"L x 5.313"W x 1.25"		
Weight	1.70 lbs.			2.30 lbs.		
Lens P/N	D-712XL			D-716XL		
Case Qty:	20			10		

**\*\*3000K Special Orders only.**

## LED PREMIUM VERSION OF THE COMMERCIAL EXTENDED LENGTH FIXTURE

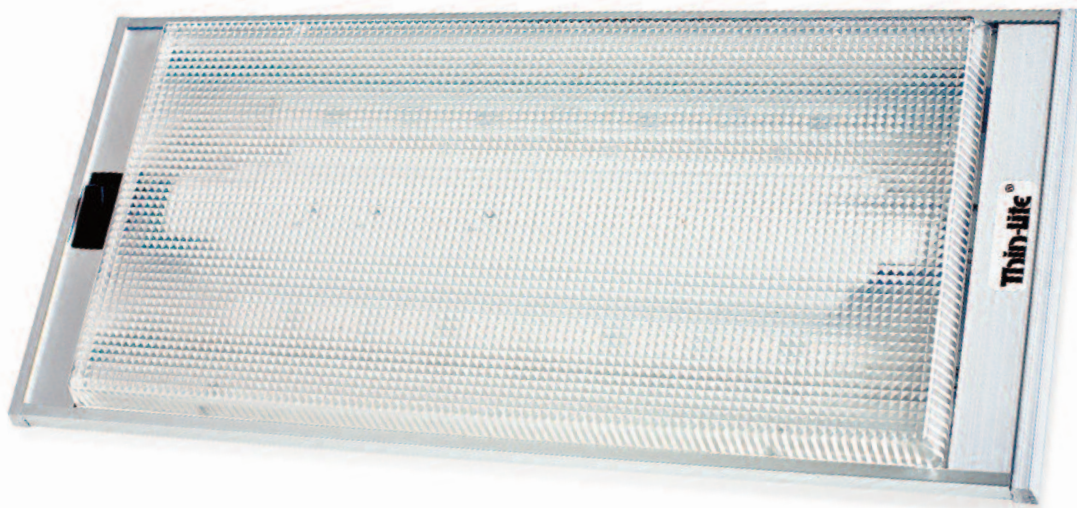
Thin-Lite's LED 718 fixture heavy duty light provides efficient lighting for commercial trucks. Easy to install. Model LED718XLP is recessed mount to provide a more "custom made" look. LED718XLP comes with clear Acrylic diffuser lens. One Touch dimming switch with unlimited dimming levels, Patented "Memory Set" technology retains user programmed brightness settings.

LED life of 100,000 Hrs., Wide Voltage Range Input of 8 -30 VDC, Over Voltage Protection that resets at 28 VDC are standard.

Color Rendering Index (CRI) 90.

Warranty: 3 years.

Also Available in Fluorescent.



Model No. LED718XLP			
Color Temperature	** 3000K	4000K	5000K
Watts	0/28.8		
No. of LEDs	144		
Amp Draw @12VDC	0/2.4		
Equivalent Lumens	0/5625	0/5760	0/6194
Dimensions	38.965"L x 6.625"W x 2.00"		
Opening Dimensions	38.465"L x 5.313"W x 1.25"		
Weight	3.30 lbs.		
Lens P/N	D-716XL (2)		
Case Qty:	5		

**\*\*3000K Special Orders only.**

## LED PREMIUM VERSION OF THE 730 EURO-STYLE RECESSED MOUNT FIXTURES

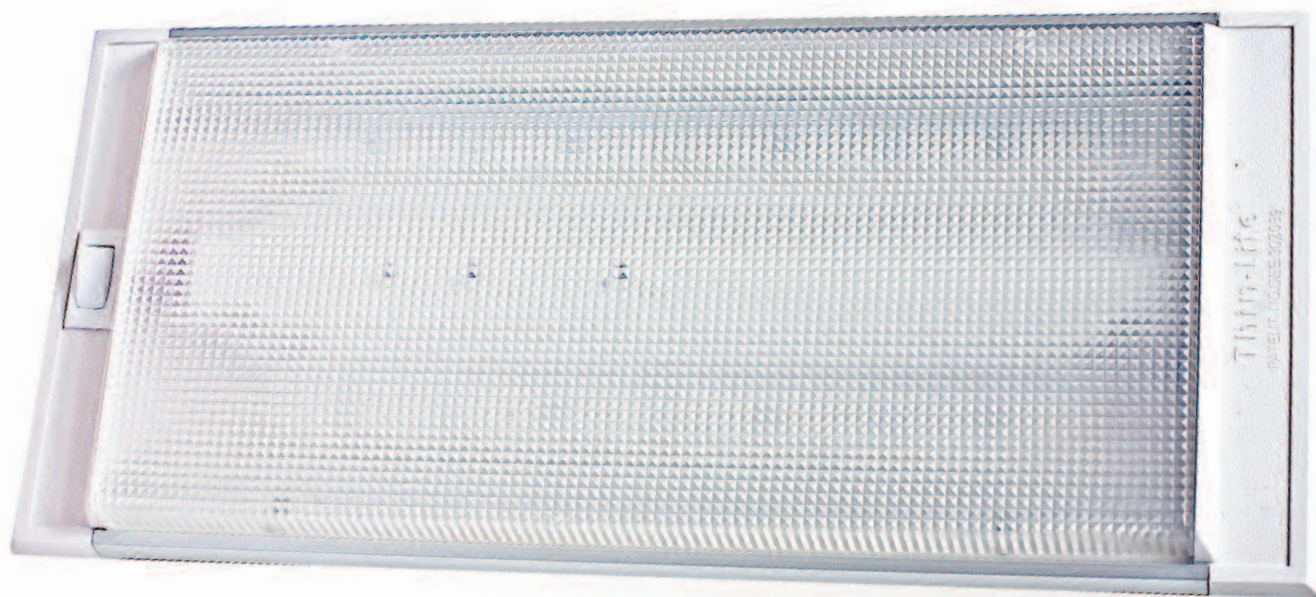
Thin-Lite's LED 730 Commercial Grade recessed mount fixtures provide efficient lighting. They are easy to install in ceilings and under cabinets. They provide the "custom made" look. LED736XLP comes with clear prismatic diffuser lens for maximum light output. One Touch dimming switch with unlimited dimming levels, Patented "Memory Set" technology retains user programmed brightness settings.

LED life of 100,000 Hrs., Wide Voltage Range Input of 8 -30 VDC, Over Voltage Protection that resets at 28 VDC are standard.

Color Rendering Index (CRI) 90.

Warranty: 3 years.

Also Available in Fluorescent.



	Model No. LED732P			LED736P, LED736XLP		
Color Temperature	**3000K	4000K	5000K	**3000K	4000K	5000K
Watts	0/9.6			0/14.4		
No. of LEDs	48			72		
Amp Draw @12VDC	0/0.80			0/1.25		
Equivalent Lumens	0/1785	0/1920	0/2304	0/2745	0/2880	0/3264
Dimensions	14.75"L x 6.625"W x 2.00"			20.625"L x 6.625"W x 2.00"		
Opening Dimensions	14.25"L x 5.313"W x 1.25"			20.125"L x 5.313"W x 1.25"		
Weight	1.70 lbs.			2.30 lbs.		
Lens P/N	D-732			D736, D-736XL		
Case Qty:	20			10		

**\*\*3000K Special Orders only.**



## LED PREMIUM VERSION OF THE 740 COMMERCIAL GRADE RECESSED MOUNT

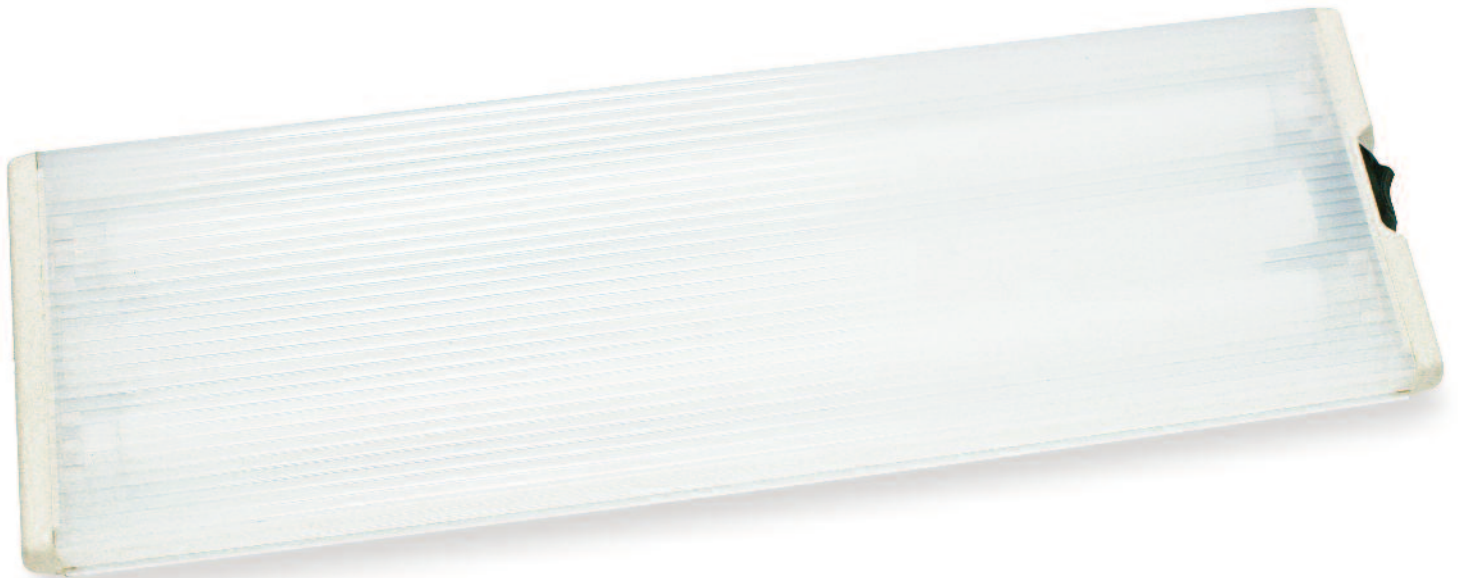
Thin-Lite's LED 740 Commercial Grade recessed mount fixtures provide efficient lighting. They are easy to install in ceilings and under cabinets. They provide the "custom made" look. Equipped with acrylic diffuser lens. One Touch dimming switch with unlimited dimming levels, Patented "Memory Set" technology retains user programmed brightness settings.

LED life of 100,000 Hrs., Wide Voltage Range Input of 8 -30 VDC, Over Voltage Protection that resets at 28 VDC are standard.

Color Rendering Index (CRI) 90.

Warranty: 3 years.

Also Available in Fluorescent.



	Model No. LED742P			LED746P		
Color Temperature	**3000K	4000K	5000K	**3000K	4000K	5000K
Watts	0/9.6			0/14.4		
No. of LEDs	48			72		
Amp Draw @12VDC	0/0.80			0/1.25		
Equivalent Lumens	0/1785	0/1920	0/2304	0/2745	0/2880	0/3264
Dimensions	13.375"L x 6.125"W x 1.75"			19.125"L x 6.125"W x 1.75"		
Opening Dimensions	12.375"L x 4.75"W x 1.00"			18.125"L x 4.75"W x 1.00"		
Weight	0.80 lbs.			1.10 lbs.		
Lens P/N	D-742			D-746		
Case Qty:	20			10		

**\*\*3000K Special Orders only.**

## LED PREMIUM VERSION OF THE 760 EURO-STYLE RECESSED MOUNT FIXTURES

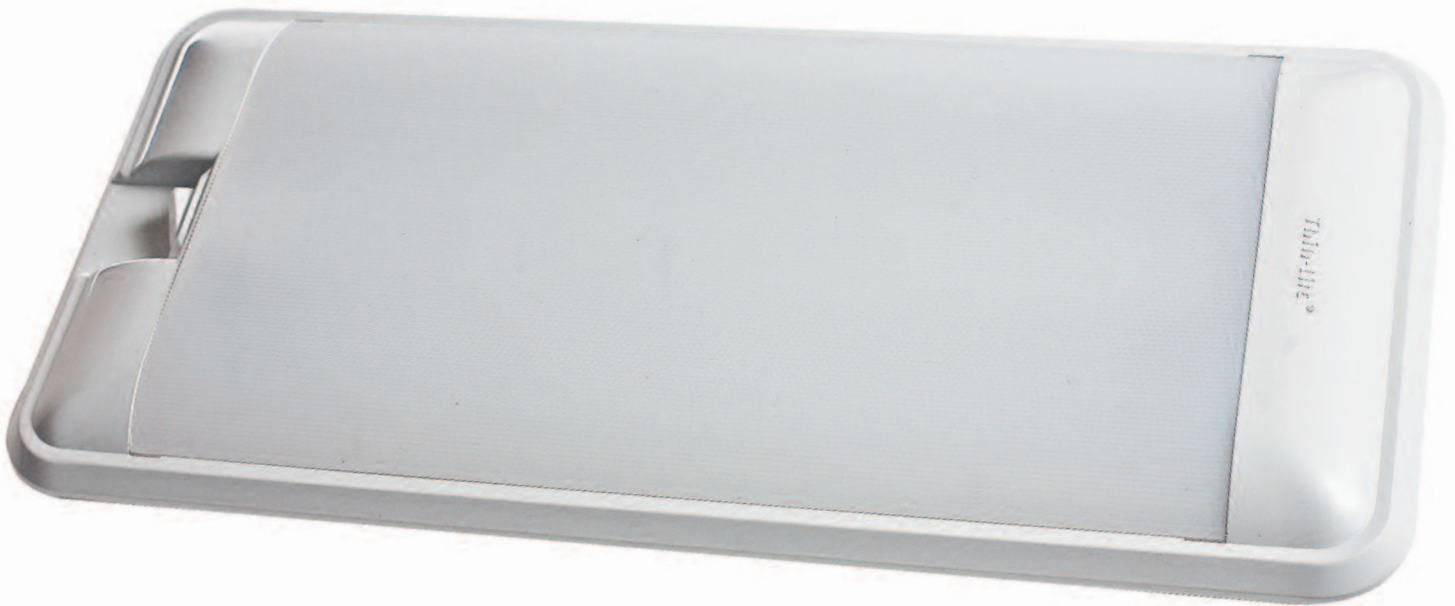
Thin-Lite's LED 760 Commercial Grade recessed mount fixtures provide efficient lighting for elegant interiors. They are easy to install in ceilings and under cabinets. They provide the "custom made" look. One Touch dimming switch with unlimited dimming levels, Patented "Memory Set" technology retains user programmed brightness settings.

LED life of 100,000 Hrs., Wide Voltage Range Input of 8 -30 VDC, Over Voltage Protection that resets at 28 VDC are standard.

Color Rendering Index (CRI) 90.

Warranty: 3 years.

Also Available in Fluorescent.



	Model No. LED762P			LED766P		
Color Temperature	**3000K	4000K	5000K	**3000K	4000K	5000K
Watts	0/9.6			0/14.4		
No. of LEDs	48			72		
Amp Draw @12VDC	0/0.80			0/1.25		
Equivalent Lumens	0/1785	0/1920	0/2304	0/2745	0/2880	0/3264
Dimensions	16.125"L x 7.30"W x 1.75"			21.825"L x 7.30"W x 1.75"		
Opening Dimensions	12.25"L x 4.75"W x 0.937"			18.125"L x 4.75"W x 0.937"		
Weight	1.00 lbs.			1.30 lbs.		
Lens P/N	D-762			D-766		
Case Qty:	20			12		

**\*\*3000K Special Orders only.**

## LED PREMIUM VERSION OF SPECIALTY VFI LIGHTING FIXTURES

Thin-Lite's LED Specialty VFI lighting fixtures provide efficiency for use in commercial and industrial applications. VFI lights are applicable for refrigerated trucks, agriculture, and car carriers. They are easy to install where decorative styling and durability are desired. Clear Acrylic Tube. One Touch dimming switch with unlimited dimming levels, Patented "Memory Set" technology retains user programmed brightness settings.

LED life of 100,000 Hrs., Wide Voltage Range Input of 8 -30 VDC, Over Voltage Protection that resets at 28 VDC are standard.

Color Rendering Index (CRI) 90.

Warranty: 3 years.

Models are offered with black end-caps. No dimming switch is available.



Model No. LEDVFI-45NSP		
Color Temperature	4000K	5000K
Watts	0/14.4	
No. of LEDs	72	
Amp Draw @12VDC	0/1.25	
Equivalent Lumens	0/2880	0/3264
Dimensions	1.5"OD x 44.725"L	
Weight	1.20 lbs.	
Case Qty:	25	

## LED SPECIALTY SERIES OF INTERIOR DOME LIGHTING FIXTURES

Thin-Lite's LED Interior Dome lighting fixtures provide efficiency for use in commercial and industrial applications. Interior Dome lights are easy to install where decorative styling and durability are desired. Compact thin design comes with clear Acrylic diffuser lens.

### LED311-1ODS

- Can be set on an ON/OFF mode or at the sensor mode to automatically illuminate when motion is detected.
- Slant design of LED array for light to disperse downward to maximize safety, visibility & minimize sensitivity to the eyes.

LED life of 50,000 Hrs.

Warranty: 2 years.

Also Available in incandescent models

311-1 & 312-1.



Model No.	LED311-1, LED311-1ODS	LED312-1
Watts	3.5	3.5/7.0
No. of LEDs	12	24
Amp Draw @12VDC	0.29	0.58
Equivalent Lumens	400	400/800
Dimensions	7.32"L x 5.00"W x 1.00"L	11.625"L x 5.00"W x 1.00"L
Weight	0.25 lbs.	0.40 lbs.
Lens P/N	D-311-1	D-311-1 (2)
Case Qty:	20	20

## RFI SUPPRESSANT ELECTRONIC INVERTER BALLASTS

Thin-Lite's electronic quiet ballasts operate at 30,000 cycles for maximum efficiency. Dual or single stage RFI circuitry is offered to ensure quiet, noise free, operation.

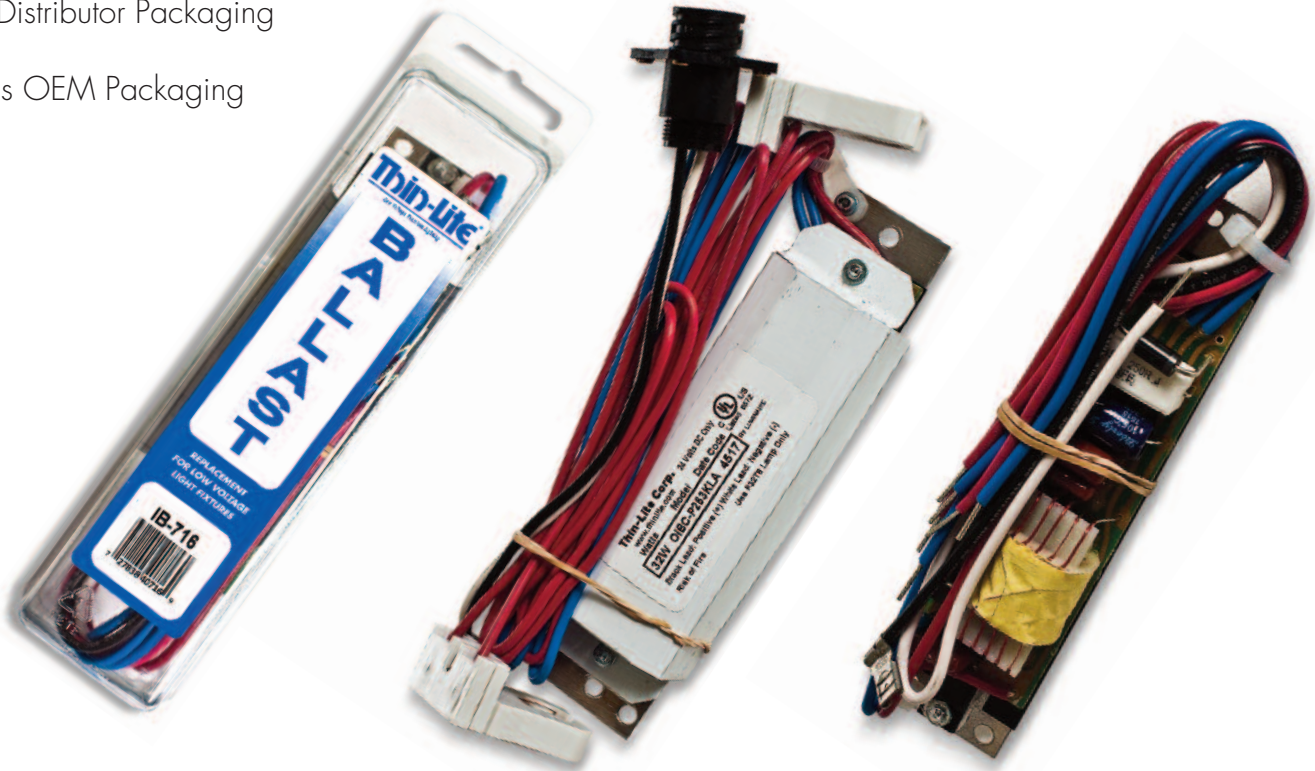
We manufacture ballasts to power fluorescent fixtures rated from 6 to 32 watts. Consult factory for specifications to meet your requirements.

Dual stage ballasts, designated by "P" prefix, are listed below.

When ordering standard ballast omit the "P"

IB is Distributor Packaging

OIB is OEM Packaging



MODEL #	WATTS	LAMP	MODEL #	WATTS	LAMP
IB-P109	22	ONE FC8T9/CW	OIBC-P109	22	ONE FC8T9/CW
IB-P111	8	ONE F8T5/CW	OIBC-P111	8	ONE F8T5/CW
IB-P112	16	TWO F8T5/CW	OIBC-P112	16	TWO F8T5/CW
IB-P115	15	ONE F15T8/CW	OIBC-P115	15	ONE F15T8/CW
IB-P116	30	TWO F15T8/CW	OIBC-P116	30	TWO F15T8/CW
IB-P125	13	ONE F13T5/CW	OIBC-P125	13	ONE F13T5/CW
IB-P126	26	TWO F13T5/CW	OIBC-P126	26	TWO F13T5/CW
IB-P138	34	TWO F17T8/CW	OIBC-P138	34	TWO F17T8/CW
IB-P147	30	ONE F30T8/CW	OIBC-P147	30	ONE F30T8/CW
IB-P151	17	ONE F17T8/CW	OIBC-P151	17	ONE F17T8/CW
IB-P153	32	ONE F32T8/CW	OIBC-P153	32	ONE F32T8/CW
IB-P199	6	ONE F6T5/CW	OIBC-P199	6	ONE F6T5/CW