

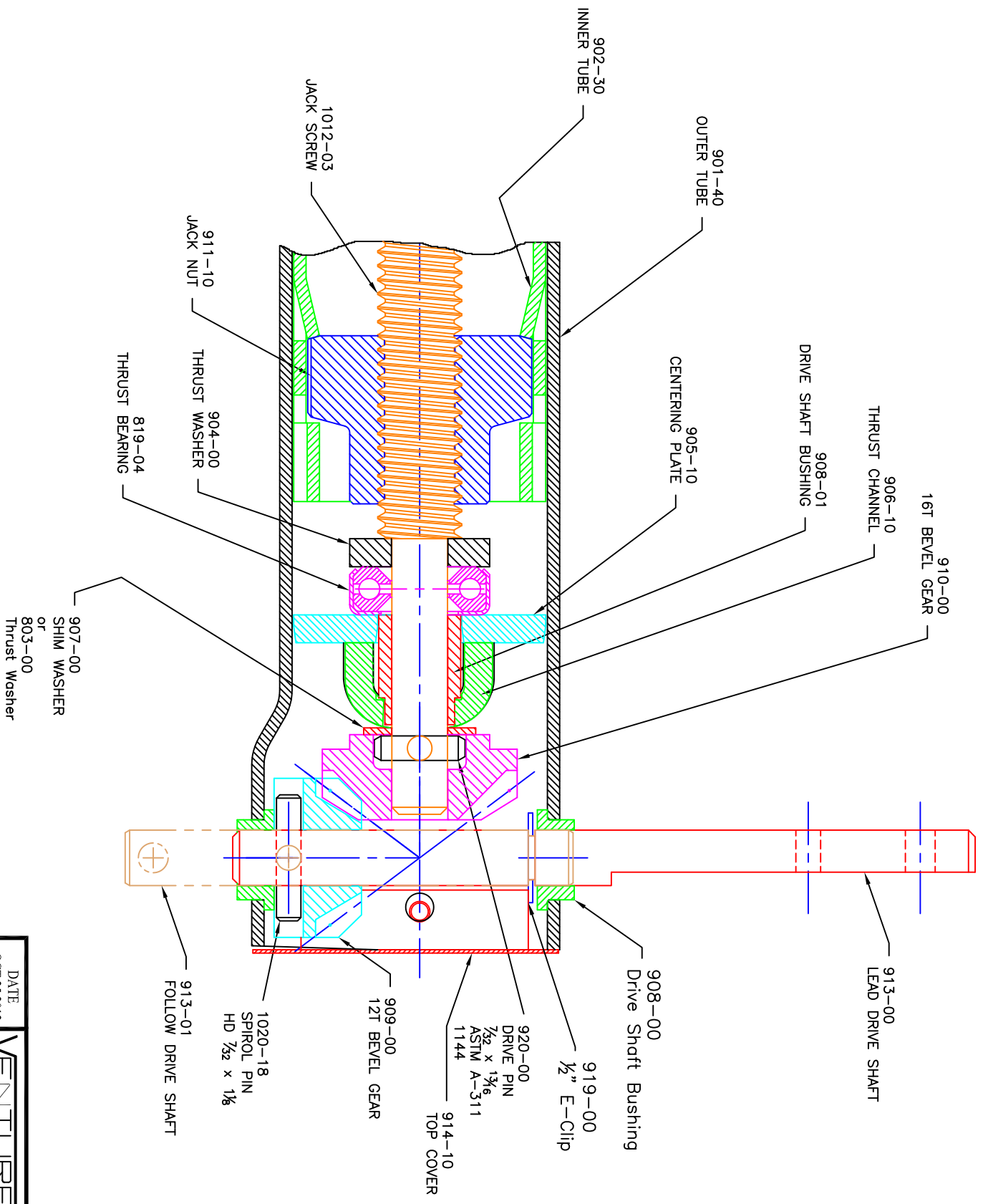
Venture Landing Gear Rebuild Instructions *Use in conjunction with LG Parts Explosion drawing*

Disassembly:

1. Remove **914-10 Top Cover** (pry it up with screwdriver). Set aside to reuse.
2. Rotate **Drive Shaft** until **1020-08 Spirol Pin** is vertical. Drive pin out with a hammer and punch. (Pin will fall and probably land on **905-10 Centering Plate**. Retrieve pin and discard.)
3. Use a screwdriver to pry **919-00 E-Clip** off of **Drive Shaft**. Discard clip.
4. Slide **Drive Shaft** out of bushings and **909-00 Bevel Gear**. Discard shaft.
5. Remove **909-00 Bevel Gear** and two **908-00 Drive Shaft Bushings** and discard.
6. Pull up on **910-00 Bevel Gear** to disengage it from **920-00 Drive Pin**. Discard gear.
7. Slide **920-00 Drive Pin** from hole in **1012-03 Jack Screw**. Discard pin.
8. Remove **907-00 Shim Washer** from **1012-03 Jack Screw** and discard.

Reassembly:

1. Apply grease to new **907-00 Shim Washer** and slide over end of **1012-03 Jackscrew** until it lies on top of **906-10 Thrust Channel**.
2. Slip new **920-00 Drive Pin** into hole in **1012-03 Jackscrew** (just above washer). Center the pin.
3. Apply grease to the bottom of the new **910-00 Bevel Gear** and slide down onto end of **1012-03 Jackscrew**. Align slot in bottom of **910-00 Bevel Gear** so that it will allow **920-00 Drive Pin** to seat up inside of gear, and gear will sit on top of **907-00 Shim Washer**.
4. Tap top of **910-00 Bevel Gear** with hammer to make sure everything is seated properly.
5. Apply grease to teeth of **910-00 Bevel Gear**.
6. Apply a bit of grease to two new **908-00 Drive Shaft Bushings** and insert them into holes in **901-40 Outer Tube**. (Grease is used simply to hold bushings from falling out while assembling.)
7. Take the new **909-00 Bevel Gear** and seat it in place as shown in diagram, meshing the teeth with the teeth of the **910-00 Bevel Gear**. (Note that this gear goes in the side of the leg that is bulged out.) Roughly line the hole in the gear up with the hole in the bushing, and align the slot in the bottom of the gear such that it is vertical (for ease of driving the pin in).
8. Take the new **Drive Shaft (913-00 or 913-01)**, depending on which leg you are rebuilding), and begin to slide it through the bushings and the gear. Make sure it is oriented correctly regarding the bulged-out side of the leg, as shown in the diagram, and that you are inserting the shaft from the bulged-out side. Hold the gear against bushing, moving it around as you push on the drive shaft until things line up and shaft goes into and through gear.
9. Push shaft through to second bushing so that both ends are supported, but you still have access inside the leg to the groove on the shaft.
10. Take the new **919-00 E-Clip** and use pliers to push it into the groove and then tap it until it securely snaps around the shaft.
11. Continue to insert shaft all the way until E-Clip is up against the far bushing. Rotate and adjust shaft until hole lines up with slot in **909-00 Bevel Gear**.
12. Use a hammer to drive the new **1020-08 Spirol Pin** through the gear and into the drive shaft. Use a punch to drive pin just below surface of outer diameter of gear.
13. Apply grease to teeth of **909-00 Bevel Gear**.
14. Depress "legs" of **914-10 Top Cover** and insert it back into top of **901-40 Outer Tube**. Tap on it to seat it fully.



DATE	OCT 25 2012	VENTURE MFG. CO.
SCALE	FULL	LG PARTS EXPLOSION