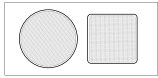


IN-CEILING SPEAKER INSTALLATION MANUAL

TECHNICAL PARAMETERS

PDIC56	PDIC66
Speaker Power (RMS)	Speaker Power (RMS)
Speaker Power (Peak)	Speaker Power (Peak)
Speaker Impedance	Speaker Impedance
Frequency Response	Frequency Response
Dimensions (H x W x D)	Dimensions (H x W x D)
Weight	Weight
Material	Material
Finish	Finish
Warranty	Warranty

PDIC66	PDIC106
Speaker Power (RMS)	Speaker Power (RMS)
Speaker Power (Peak)	Speaker Power (Peak)
Speaker Impedance	Speaker Impedance
Frequency Response	Frequency Response
Dimensions (H x W x D)	Dimensions (H x W x D)
Weight	Weight
Material	Material
Finish	Finish
Warranty	Warranty

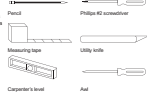


- This product fits the standard installation of the room. Easy for help & info.
- It is an option with protection A&S, a serial, L & B, fingerprints, IR, network & charge cable.

INSTALLATION

The in-ceiling speaker system was designed to be easily installed. However, for the safety of your property, please consult your dealer or a qualified installer.

TOOLS NEEDED



TROUBLESHOOTING

- IF THERE IS NO SOUND FROM ANY OF THE SPEAKERS:**
 - Check that music/center is on, and a source is playing.
 - Check all wires and connections between receiver/amplifier and speakers. Make sure all wires are connected. Make sure none of the speaker wires are loose or disconnected or incorrectly match color.
 - Make sure your power connection to your receiver/amplifier.
- IF THERE IS NO SOUND COMING FROM ONE SPEAKER:**
 - Check that speaker control on your receiver/amplifier.
 - Check that wire and connections between receiver/amplifier and speaker. Make sure all wires are connected. Make sure none of the speaker wires are loose or disconnected or incorrectly match color.
- IF THERE IS A LOW OR NO SOUND OUTPUT:**
 - Check that the speaker wires are connected properly and have the correct polarity (+ and -).
 - Check that the volume level on your receiver/amplifier is set to a level that is audible.
 - Check that the speaker wires are connected properly and have the correct polarity (+ and -).
 - Check that the speaker wires are connected properly and have the correct polarity (+ and -).
- IF THE SYSTEM PLAYS AT LOW VOLUME & SHUTS OFF AS VOLUME IS INCREASED:**
 - Check that the speaker wires are connected properly and have the correct polarity (+ and -).
 - Check that the speaker wires are connected properly and have the correct polarity (+ and -).

Thank you for purchasing this PYLE in-ceiling speaker system. It is a state-of-the-art product carefully designed and manufactured for your installation needs and has been thoroughly tested to ensure consistent and reliable performance.

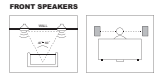
If you have any question about the installation or operation of your PYLE in-ceiling speaker system which are not answered by this manual, contact your dealer immediately.

INCLUDED IN-CEILING SPEAKERS



One pair of speakers with grille
One pair of speakers with grille
One pair of speakers with grille
One pair of speakers with grille

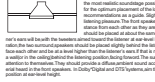
SPEAKER PLACEMENT



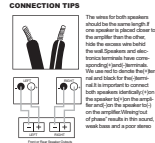
REAR SPEAKERS



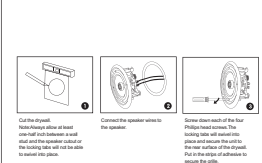
IN-CEILING



SPEAKER CONNECTIONS



EXISTING CONSTRUCTION IN-CEILING SPEAKERS



SPEAKER CONNECTIONS

