

# NESCO<sup>®</sup> everyday



---

## **Electric Skillet (Model ES-08)**

Instruction Manual

## Table of Contents

Important Safeguards.....	1
Parts, Assembly and Operation .....	2
Care and Cleaning and Cooking Tips.....	3

## Technical Specifications

Specification: 800W, 120 VAC, 60Hz



**- This product is designed for household use only -**

When using electrical appliances, basic safety precautions should always be followed, including the following:

## IMPORTANT SAFEGUARDS!

- 1. READ AND SAVE ALL INSTRUCTIONS.**
2. Do not touch hot surfaces. Use handles or knobs.
3. To protect against electrical shock and personal injury, do not immerse this appliance, including cord and plug, in water or other liquid.
4. This appliance is not intended for use by persons (including children) with reduced physical, sensory or mental capabilities, or lack of experience and knowledge, unless they have been given supervision or instruction concerning use of the appliance by a person responsible for their safety.
5. Close supervision is necessary when any appliance is used by or near children.
6. Unplug from outlet when not in use and before cleaning. Allow to cool completely before putting on or taking off parts, and before cleaning.
7. Do not operate any appliance with a damaged cord or plug or after the appliance malfunctions or has been damaged in any manner. To avoid hazards, return appliance to NESCO® Factory Service Department for examination, repair or adjustment.
8. The use of accessory attachments not recommended by the manufacturer may result in fire, electric shock or injury to persons.
9. Do not use outdoors.
10. Do not let cord hang over edge of table or counter, or touch hot surfaces.
11. Do not place on or near a hot gas or electrical burner or in a heated oven.
12. Do not use appliance for other than its intended use as described in this manual.
13. Always place appliance on a flat and stable surface.
14. While in use, keep appliance out of the reach of babies and children.
15. Do not leave appliance unattended while in use.

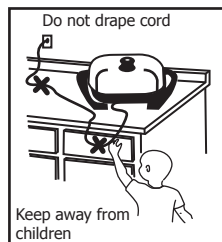
## SAVE THESE INSTRUCTIONS!

**Polarized Plug:** This appliance has a polarized plug (one blade is wider than the other). To reduce risk of electric shock, plug is intended to fit into polarized outlet only one way. If the plug does not fit fully into the outlet, reverse the plug. If it still does not fit, contact a qualified electrician. Do not try to modify the plug in any way.

**DO NOT USE WITH AN EXTENSION CORD.**

**WARNING: SERIOUS HOT-OIL BURNS MAY RESULT FROM A DEEP FRYER (COOKER/FRYER, SKILLET, OR FRY PAN) BEING PULLED OFF A COUNTER. DO NOT ALLOW THE CORD TO HANG OVER THE EDGE OF THE COUNTER WHERE IT MAY BE GRABBED BY CHILDREN OR BECOME ENTANGLED WITH THE USER.**

**DO NOT USE WITH AN EXTENSION CORD.**



## Parts



## How to assemble your electric skillet

Remove all parts from the packaging.

1. Locate and remove Lid Knob from the packaging.
2. Place the screw through center hole of lid. The head of screw to inside of lid.
3. Place Protector Ring over screw threads on the outside of lid. Rough side of ring facing glass.
4. Turn Lid Knob onto screw thread while pressing on head of screw.
5. Tighten screw until snug.

## Before first use

1. Read and follow all instructions and save for reference.
2. Remove all packaging and labels.
3. Clean all parts following instructions in the 'Care and Cleaning' section.
4. Wipe the base with a damp cloth.

## Operation

1. Place appliance on a flat, heat resistant, stable surface in a ventilated area.
2. Make sure the temperature control is in OFF position. Insert control into inlet on the side of skillet. Then insert plug into electrical outlet.
3. Adjust control to desired setting. NOTE: The signal light on control indicates heat setting. When desired setting is reached, the light will turn off. It will continue to cycle on and off during use to indicate heat setting is being automatically maintained.
4. Preheat the skillet with the lid on for 10 minutes or until the indicator light goes out. NOTE: The cooking temperatures listed in this user manual are estimates. Adjust the cooking temperature slightly up or down to achieve the results you prefer.
5. A steam vent is located on the glass lid. The steam vent allows steam to escape while cooking with the lid in place. **CAUTION: Escaping steam is hot! Be careful while removing or lifting lid.**

6. Place food directly onto cooking surface or rack and cook to desired doneness.
7. When finished cooking, turn controller to OFF and remove plug from power outlet. **IMPORTANT:** To avoid burn injury, wait until the appliance has cooled before removing the temperature control.

**NOTE:** If heating oil, always leave the lid off. If oil smokes, immediately turn skillet "OFF" and allow to cool.

## Care and Cleaning Instructions

1. Turn temperature control to OFF and unplug cord from power outlet.
2. Always allow appliance to cool completely before cleaning and removing temperature controller.
3. Remove the temperature control from unit and wipe clean with a dry towel. **NEVER IMMERSE TEMPERATURE CONTROL IN WATER OR ANY OTHER LIQUID.**
4. Allow base to cool completely before cleaning. Absorb any excess water or grease from base with a paper towel.
5. Do not immerse the skillet in water or any other liquid or place in dishwasher. The skillet should be wiped with soapy water and dried with a soft cloth. The lid can be washed in soapy water or is dishwasher safe. **NOTE: Do not use steel wool, abrasive cleaners, or metal scouring pads for cleaning this appliance.**
6. Do not use metal utensils they may scratch the non-stick surface.

## Cooking Tips

- Before using the skillet for the first time, lightly brush cooking surface with vegetable oil. Heat, uncovered, to 300°F. Turn "OFF" and allow time to cool completely. Wipe away excess oil.
- This skillet is not designed for deep frying.
- To pan-fry, do not use more than 4 cups of oil. Select a vegetable oil or peanut oil for frying.
- Butter and olive oil should only be used to sauté foods on a lower temperature setting.
- Do not attempt to cool the heated cooking surface by pouring cold water into the skillet. The sudden temperature change may cause the cooking surface to warp.
- Do not immerse the temperature-control probe, cord or plug in water or any other liquid.
- Make sure that the temperature control inlet, located on the side of the skillet, is completely dry prior to use.