



Smart Life APP

User Manual

Quick Guide

* Before using the product, please read the Quick Guide carefully and keep it well.

* This instruction manual is for reference only.

NO.1 Download APP

To download the app search for “Smart Life” in any app store

N0.2 Registration/Login/Password Retrieval

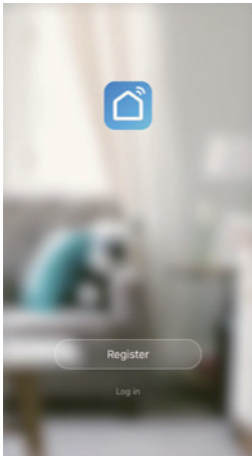


Fig. 1



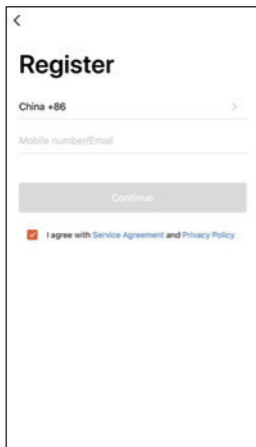
Fig. 2

Registration

If you do not have an app account, you may choose to register or log in by text message authentication. The registration process is described on this page and the next.

1. Click "Create account" to go to the Smart Living proceed to the mobile phone number registration page
2. The system will identify automatically the country/region you are in, or you may choose to select manually a country/region. Enter your mobile phone number or email and click "Next", as shown in Fig. 2

N0.3 Registration/Login/Password Retrieval



Register

China +86

Mobile number/Email

Continue

I agree with [Service Agreement](#) and [Privacy Policy](#)

The screenshot shows a registration form with a back arrow at the top left. The title is "Register". Below it is a country code dropdown menu showing "China +86". A text input field is labeled "Mobile number/Email". A grey "Continue" button is positioned below the input field. At the bottom, there is a checkbox that is checked, followed by the text "I agree with Service Agreement and Privacy Policy".

Fig. 1



Verification Code

Verification code has been sent to: 18601994751, Resend (41s)

The screenshot shows a verification code screen with a back arrow at the top left. The title is "Verification Code". Below the title is a horizontal line with six dashes, representing a code input field. Below the input field, a message states "Verification code has been sent to: 18601994751, Resend (41s)".

Fig. 2

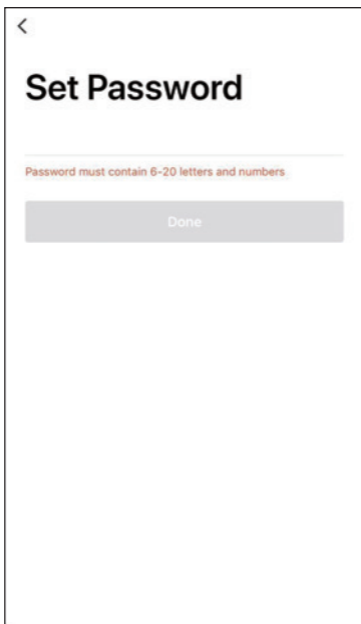


Fig. 3

2. The system will identify automatically the country/region you are in, or you may choose to select manually a country/region. Enter your mobile phone number or email and click "Get code", as shown in Fig. 1
3. Enter the authentication code you received, Then enter the password and click "OK" to complete registration.

NO.4 Registration/Login/Password Retrieval

<

Log in

China +86 >

Mobile number/Email

Password

Log in

Verify via SMS

Forgot Password

Account ID+Password Login

If you already have an app account, click "Log in with existing account" to proceed to the login page

1. The system will identify automatically the country/region you are in, or you may also choose to select manually a country/region

2. Enter the mobile phone number or email you have registered and enter the password in to log in

Third-Party Social Login (China only)

If you have already installed Wechat on your mobile phone, click the WeChat icon in Social Login and proceed through the authorization page to log in.

N0.5 Registration/Login/Password Retrieval

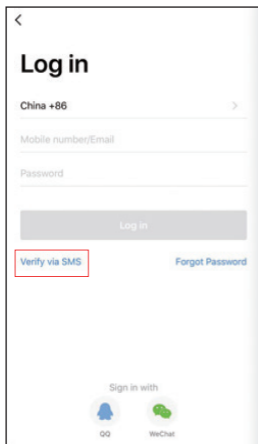


Fig. 1

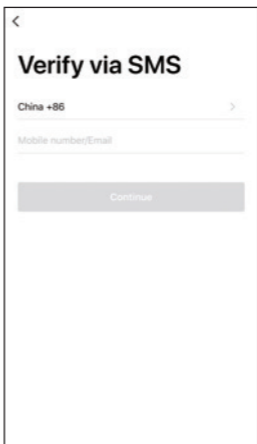


Fig. 2

N0.5 Registration/Login/Password Retrieval

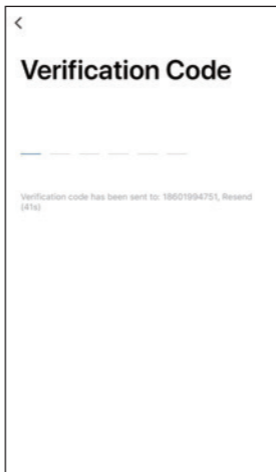


Fig. 3

Mobile Phone Number+Authentication Code Login

1. Click "Authentication Code Login" in Fig. 1 to go to the next page.
2. The system will identify automatically the country/region you are in, or you may also choose to select manually a country/region
3. Enter your mobile phone number or email and click "Get code", as shown in Fig. 2
4. Enter the authentication code in the text message or email to log in, as shown in Fig. 3

N0.6 Registration/Login/Password Retrieval

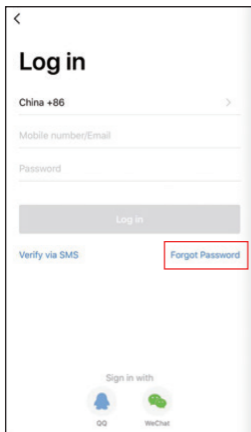


Fig. 1

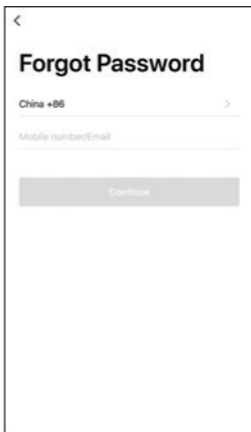


Fig. 2

Forgot Password

If you forgot your app password, you can reset your password by following the Password Retrieval procedure

1. Click "Forgot Password", as shown in Fig. 1
2. The system will identify automatically the country/region you are in, or you may choose to select manually a country/region. Enter the mobile phone number or email you used to register and click "Get code", as shown in Fig. 2

NO.7

Registration/Login/Password Retrieval

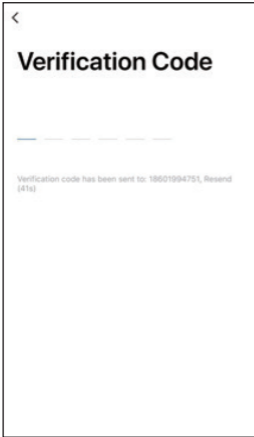


Fig. 3

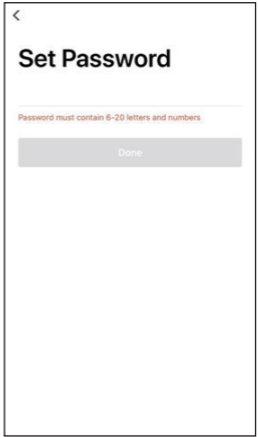


Fig. 4

3. Enter the authentication code sent to your mobile phone number or email, as shown in Fig. 3
4. Enter the new password and click "OK" to log in, as shown in Fig. 4

NO.8 Household/Management

1. When logged in, click "Activate Smart Living" to go to the "Add Household" page, as shown in Fig. 1
2. "Household Name" can be entered manually, as necessary. Click "Household Location" to go to the map. Move the Household icon manually to change the address. Click "OK" to confirm the address, as shown in Fig.
3. Click "Add Room" to add a room, as shown in Fig. 3. Click "OK" at the top right corner to complete room settings. Room settings can be changed anytime by clicking on "My Household", as shown in Fig. 4

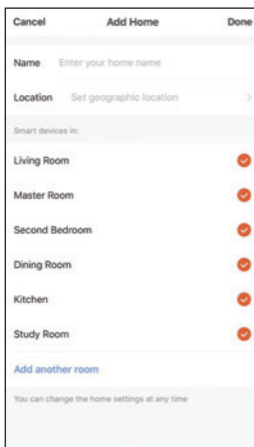


Fig. 1

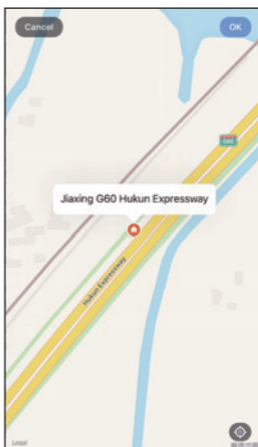


Fig. 2

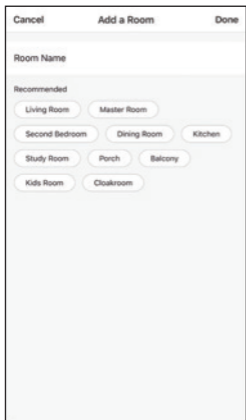


Fig. 3

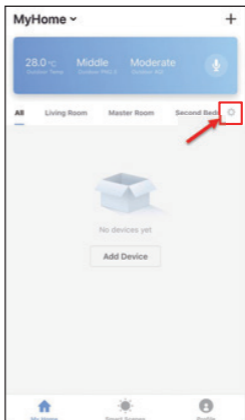
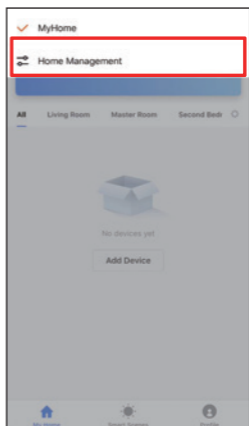
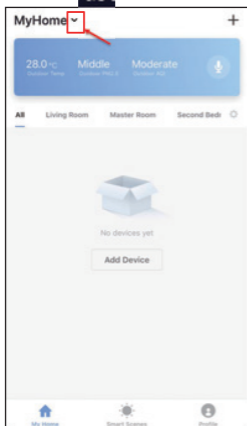
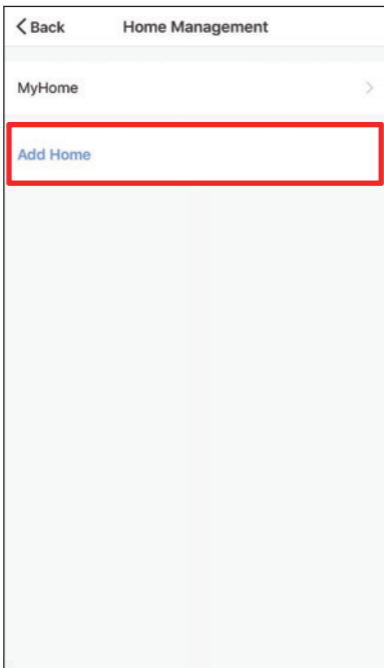


Fig. 4

N0.9 Household/Management

Click the pull-down arrow at the top left corner of "My Household" to add a household and manage households. One account can manage multiple households at the same time. The user can operate a device in a household by selecting it in the household menu.



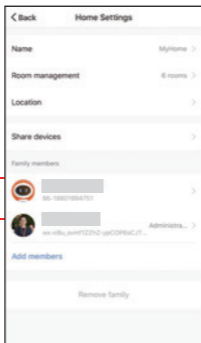


NO.10 Household/Management

Click the Household to go to the household settings, as shown in the figure

Combine and classify administrative access of different individuals to devices. All devices and smart scenarios in a household members without having to complete the sharing settings each time.

Other household members can enjoy control of smart devices in the household, but will not be able to modify, add, or delete a device

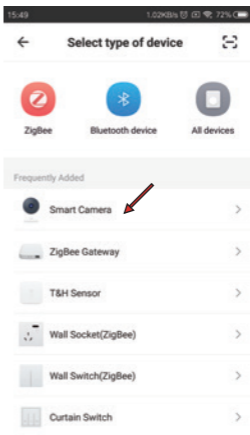
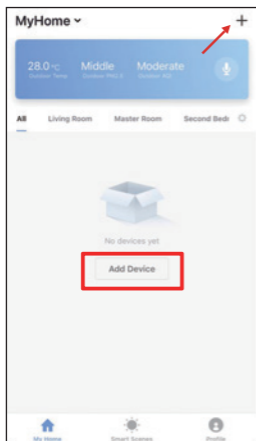


Add/Delete rooms in a household and manage all room settings in a household in on place

Administrators have the highest level of access, which allows them to manage access to devices or access granted to other household members

N0.11 Adding Devices-All Devices

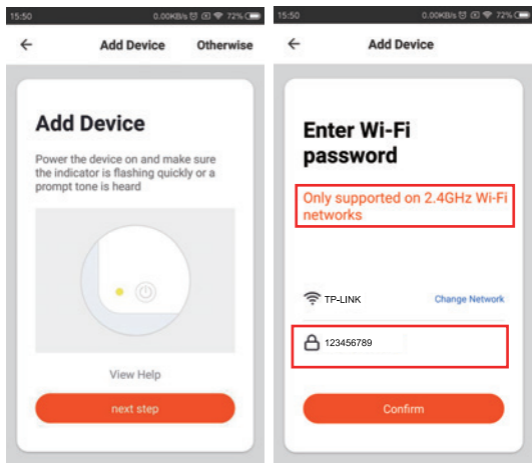
Click "Add Device" on the app home page or the "+" sign at the top right corner to go to the "All Devices" page, where devices can be selected and added as necessary



N0.12 Add devices

1. Click "Next Step"

2. Insert the password of your router(Attention: This device is only for 2.4GHz wifi Internet)



N0.13 Add devices

1. Click "Continue"
2. Align the QR code with the lens of the device, about 20~30 cm, until you hear the humming sound. Then select "hear the tone"



N0.14 Add devices-Connet to the Internet

Connect to the Internet like Fig. 1, connect succeed will apperance like Fig. 2. After connect to the Internet succeed, you can chage the device's name and also can select the room place.

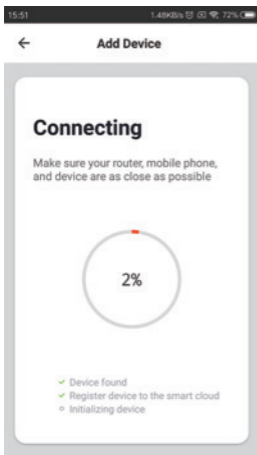


Fig. 1

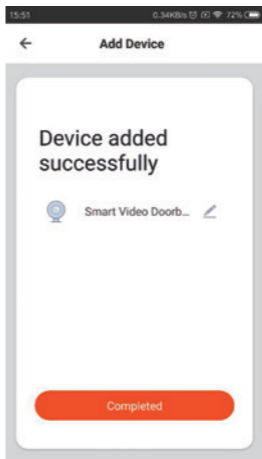
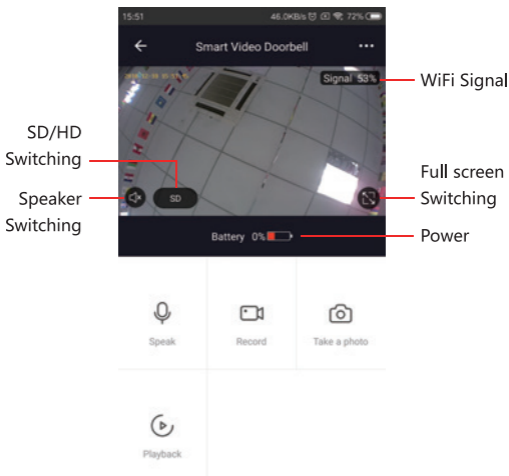


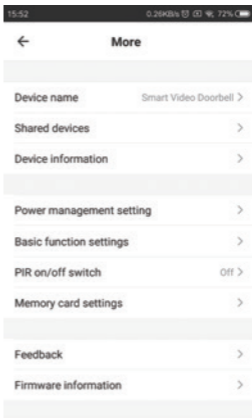
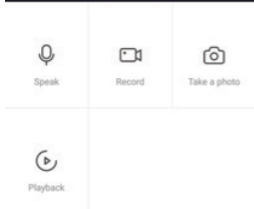
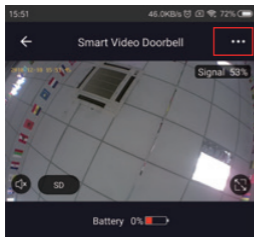
Fig. 2

N0.15 Added device successfully



N0.16 Setting Up

Click "Setting Up", set up according to your own needs(Remove device)



[Remove Device](#)