



Operating a Faucet without a Handle

Operating Instructions



Tool needed: Standard Pliers



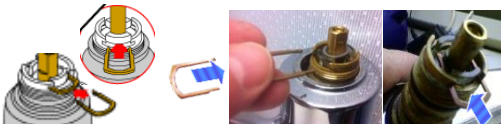
Identifying and Operating

Use the photos below to identify your faucet's cartridge type and move to the appropriate step.



Brass or Chrome Stem

1. If the cartridge has been removed, insure it is fully seated in the valve body and the cartridge clip has been reinstalled.



2. Spout: Make sure the spout body has been fully seated.



3. Make sure the retainer nut is on and tightened.



Silver and Black Stem

1. If the cartridge has been removed, insure it is fully seated in in the valve body.



2. Spout: Make sure the spout body has been fully seated.



3. Make sure the retainer nut is on and tightened.



White and Blue Stem

1. If the cartridge has been removed, insure it is fully seated in in the valve body.



2. Spout: Make sure the spout body has been fully seated.



3. Make sure the retainer nut is on and tightened



4. **Operating without a handle:** Pull the brass stem of the cartridge to turn the faucet on. Push in to turn off.



5. **Controlling water temperature:** Rotate the brass stem clockwise for hot water or counter-clockwise for cold water. If you have used locking pliers like Vice Grips, you can leave the locking pliers on the brass stem and use this as a temporary handle.

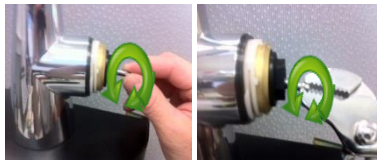


You are all done!

4. **Operating without a handle:** Push the silver stem backwards to turn the faucet on. To turn the faucet off, move the stem forward.

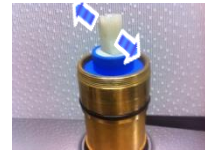


5. **Controlling water temperature:** Rotate the silver stem clockwise for hot water or counter-clockwise for cold water. If you have used locking pliers like Vice Grips, you can leave the locking pliers on the silver stem and use this as a temporary handle.



You are all done!

4. **Operating without a handle:** Push the silver stem backwards to turn the faucet on. To turn the faucet off, move the stem forward.



5. **Controlling water temperature:** Rotate the white stem clockwise for hot water or counter-clockwise for cold water. If you have used locking pliers like Vice Grips, you can leave the locking pliers on the white stem and use this as a temporary handle.



You are all done!



MOEN®

1255 Cartridge and O-rings Removal and Installation

Tools needed: 3/32" Allen wrench Large Pliers, Crescent Wrench or Installation Tool Flathead Screwdriver Soft Brush



1 Caution



Caution: Always turn your water supplies off before disassembling your faucet. With the supplies turned off, move your faucet's handle to the "on" position to relieve pressure.

2 Identify the Handle and Remove

Screw Hole in Back



OR

Screw Hole in Front



Locate the hole in either the front or back of the handle. If this hole is covered by a small plug, pry the plug off to remove. Next, use the 3/32" Allen wrench in the hole to unscrew the Allen screw. *This screw does not need to be fully removed, only loosened until the handle will slide off.*

3 Dome Removal



Grab the dome and pull upward to remove.

Next Move



Replacing only the spout O-rings:
Move to step 9.

Replacing the 1255 cartridge:
Move to step 4.

1255 Cartridge

4 Cartridge Nut Removal



Special Note
Installation Tool Option
Tool number: 118305



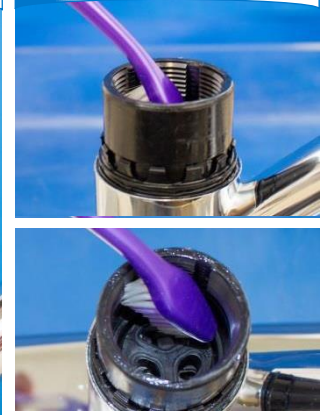
Using the grey assembly tool (supplied with the faucet), pliers or wrench, unscrew the 1255 cartridge nut counter-clockwise and remove.

5 1255 Removal



Lift the 1255 cartridge out of the faucet.

6 Cleaning

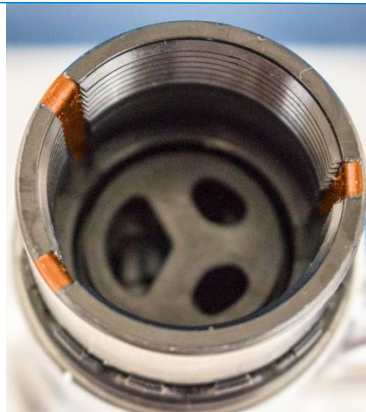


Use a soft brush to clean the inside of the chamber. Make sure no debris remains.

7 Cartridge Installation



Highlighted in orange are small tabs on the cartridge and grooves in the faucet. These must line up.



1. View the 1255 cartridge to find the three small tabs protruding. Look into the chamber of the faucet to find the location of the three large grooves. The grooves will accept the small tabs protruding from the 1255 cartridge. These tabs and grooves are highlighted in orange above for demonstration, but will not be orange on your cartridge and faucet.

8 Cartridge Nut



Insert the 1255 cartridge into the chamber making sure to line up the three tabs with the grooves.

Using the grey assembly tool, pliers or a wrench, tighten the new 1255 cartridge nut until snug. Next turn approximately 90 degrees to fully secure the nut.

Next Move



To reassemble the handle: Work backwards from steps 3 through 1.

To install spout O-rings: Move to step 9.

Spout O-rings

9 Crown Removal



Gently pry up on the black crown ring. Be careful not to damage the crown ring; this will be used again during reassembly.

10 Spout



Grab the spout and lift up to remove the item from the faucet body.

11 Locate O-Rings



In the photo above, the upper and lower O-rings are highlighted in orange.

12 Spout O-Rings Removal



Pry each O-ring out to remove. Be careful not to damage the valve body.

13 Spout O-Rings Installation



Using the supplied pouch of grease, apply a thin layer of grease to each rubber O-ring. Place a new rubber O-ring onto the black valve body and push down until fully seated in the lowest groove. Place the next O-ring onto the top groove in the valve body.

14

Spout Reinstallation



Use a soft brush to clean the inside of the spout. Insure the inner surface is clean and smooth.



Slide the spout back on until it is flush with the base.

15

Crown Ring Reinstallation



Secure the crown ring into the top of the spout so the tabs of the tuck under the edge of the channel. The line highlighted in orange shows where the gap in the crown ring should be located.



To insure the crown ring is seated properly, gently pull upwards on the spout. If the crown ring is seated, the spout will not lift off.

Next Move



To reassemble the handle: *Work backwards from steps 3 through 1.*

Once the handle is assembled, you are all done!

