



Operating a Faucet without a Handle

Operating Instructions



Tool needed: Standard Pliers



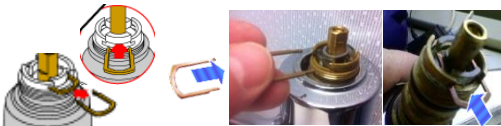
Identifying and Operating

Use the photos below to identify your faucet's cartridge type and move to the appropriate step.



Brass or Chrome Stem

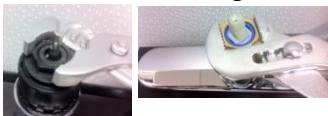
1. If the cartridge has been removed, insure it is fully seated in the valve body and the cartridge clip has been reinstalled.



2. Spout: Make sure the spout body has been fully seated.



3. Make sure the retainer nut is on and tightened.



Silver and Black Stem

1. If the cartridge has been removed, insure it is fully seated in in the valve body.



2. Spout: Make sure the spout body has been fully seated.



3. Make sure the retainer nut is on and tightened.



White and Blue Stem

1. If the cartridge has been removed, insure it is fully seated in in the valve body.



2. Spout: Make sure the spout body has been fully seated.



3. Make sure the retainer nut is on and tightened



4. **Operating without a handle:** Pull the brass stem of the cartridge to turn the faucet on. Push in to turn off.



5. **Controlling water temperature:** Rotate the brass stem clockwise for hot water or counter-clockwise for cold water. If you have used locking pliers like Vice Grips, you can leave the locking pliers on the brass stem and use this as a temporary handle.



You are all done!

4. **Operating without a handle:** Push the silver stem backwards to turn the faucet on. To turn the faucet off, move the stem forward.

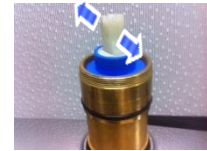


5. **Controlling water temperature:** Rotate the silver stem clockwise for hot water or counter-clockwise for cold water. If you have used locking pliers like Vice Grips, you can leave the locking pliers on the silver stem and use this as a temporary handle.

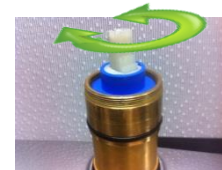


You are all done!

4. **Operating without a handle:** Push the silver stem backwards to turn the faucet on. To turn the faucet off, move the stem forward.



5. **Controlling water temperature:** Rotate the white stem clockwise for hot water or counter-clockwise for cold water. If you have used locking pliers like Vice Grips, you can leave the locking pliers on the white stem and use this as a temporary handle.



You are all done!

