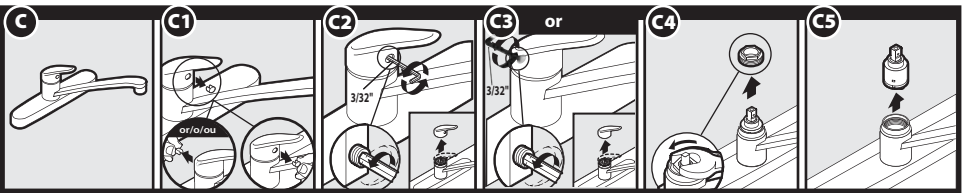
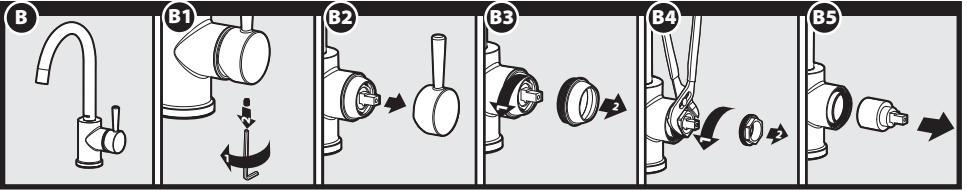
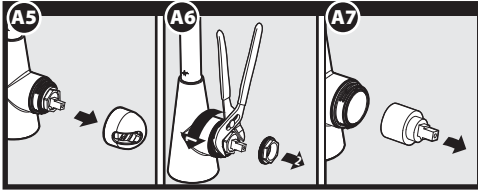
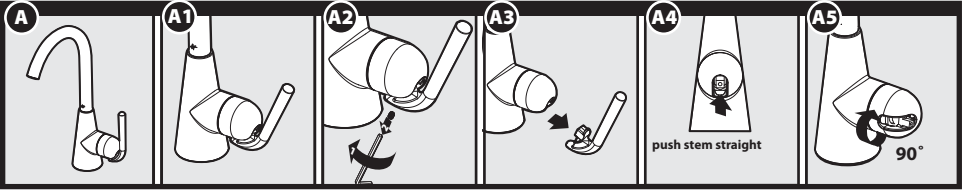


English

⚠ CAUTION — TIPS FOR REMOVAL OF OLD CARTRIDGE:

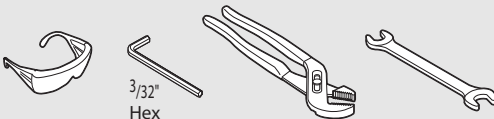
Always turn water supply OFF before removing existing faucet or disassembling the valve. Open faucet handle to relieve water pressure and ensure that complete water shut-off has been accomplished.

CARTRIDGE REMOVAL

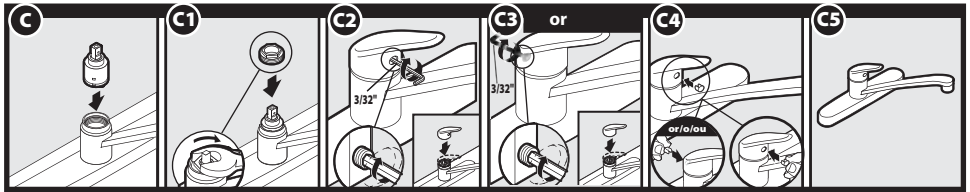
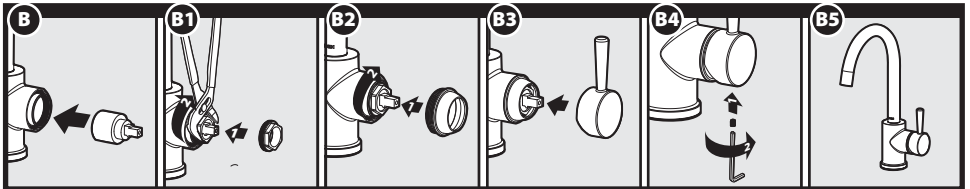
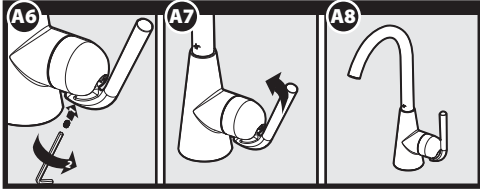
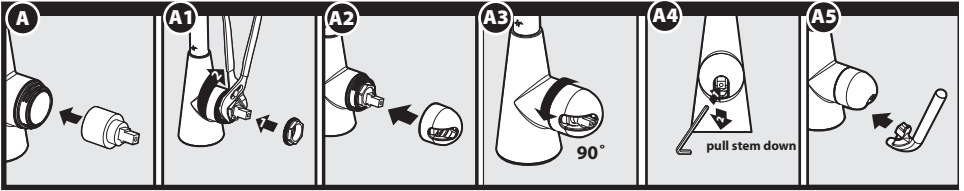


HELPFUL TOOLS

For safety and ease of faucet replacement, Moen recommends the use of these helpful tools.



CARTRIDGE REASSEMBLY ON OPPOSITE SIDE.



CARTRIDGE ALIGNMENT

