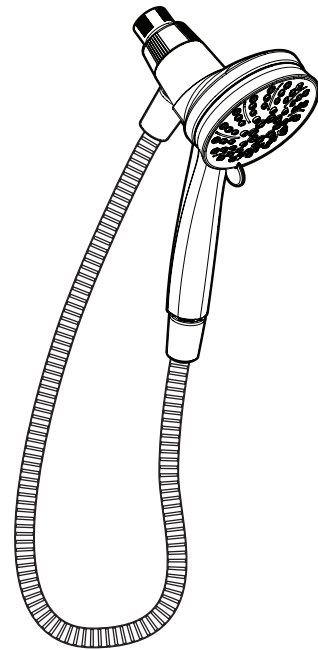


MOEN®

Installation Guide

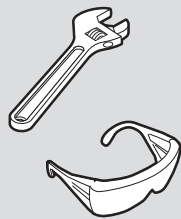


MAGNETIC DOCKING HANDHELD SHOWER

MODELS 26000, 26000SRN, 26100, 26100SRN Series

HELPFUL TOOLS

For safety and ease of faucet replacement, Moen recommends the use of these helpful tools.



IMPORTANT INFORMATION FOR PEOPLE WITH PACEMAKERS OR OTHER IMPLANTABLE MEDICAL DEVICES

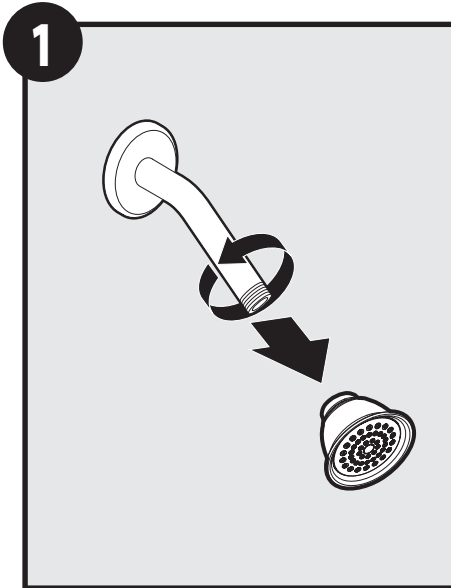
ATTENTION! This handheld shower product contains neodymium magnets ranging in strength up to .3T. In certain conditions, some magnets may interfere with the operation of pacemakers or other implantable medical devices. If you wear a pacemaker or implantable medical device, please consult with your device manufacturer and physician/clinician for specific guidance.



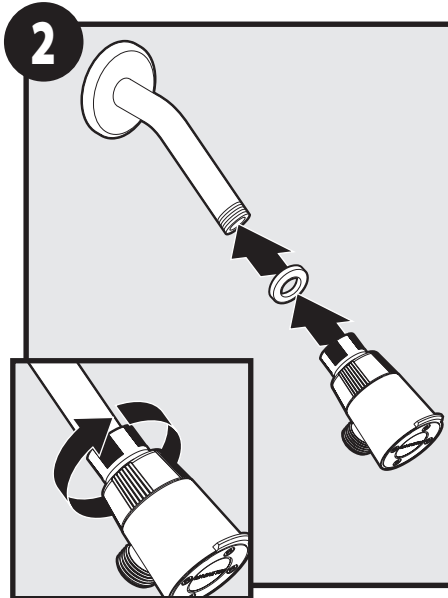
CAUTION — TIPS FOR REMOVAL OF OLD FAUCET:

Always turn water supply OFF before removing existing faucet or disassembling the valve. Open faucet handle to relieve water pressure and ensure that complete water shut-off has been accomplished.

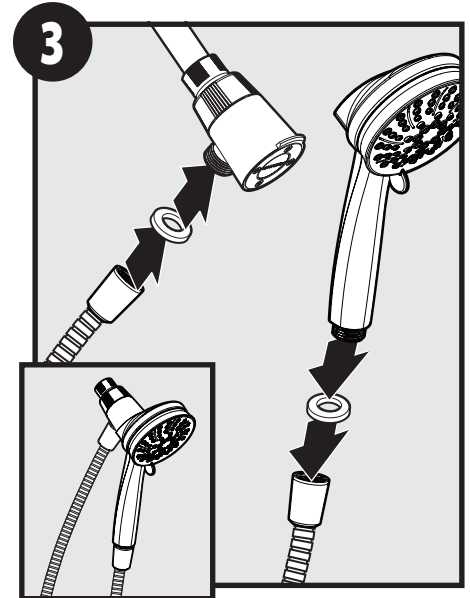
Install this product with a backflow preventer as required by the local plumbing code.



1 Remove existing showerhead. Use wrench if necessary.



2 Hand tighten handheld bracket and washer to shower arm.



3 Hand tighten hose and washers to bracket and handheld shower.