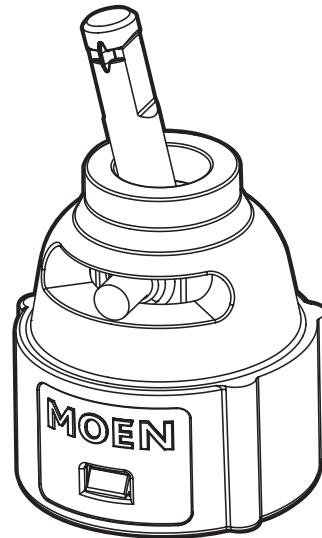
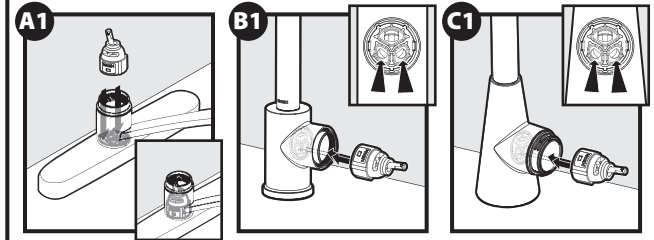


Installation Guide



**DURALAST® REPLACEMENT
1- HANDLE CARTRIDGE**

CARTRIDGE ALIGNMENT



CAUTION — TIPS FOR REMOVAL OF OLD FAUCET:

Always turn water supply OFF before removing existing faucet or disassembling the valve. Open faucet handle to relieve water pressure and ensure that complete water shut-off has been accomplished.

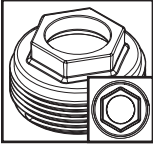
HELPFUL TOOLS

For safety and ease of faucet replacement, Moen recommends the use of these helpful tools.

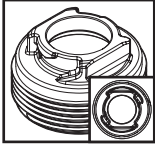


IMPORTANT /

1255



160657

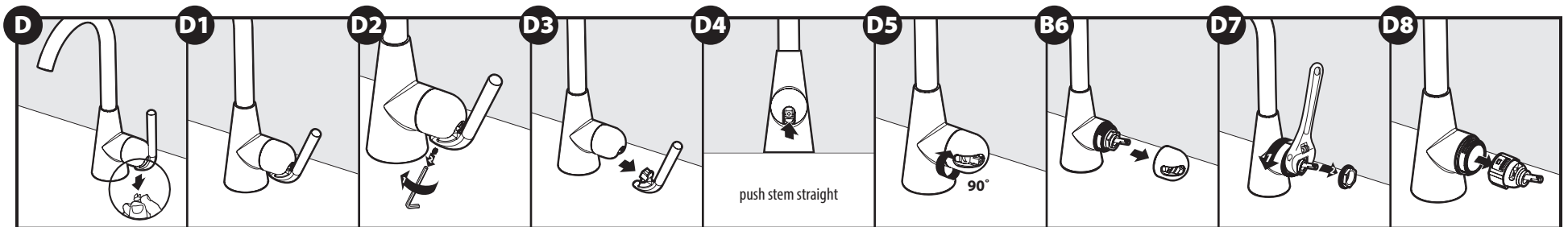
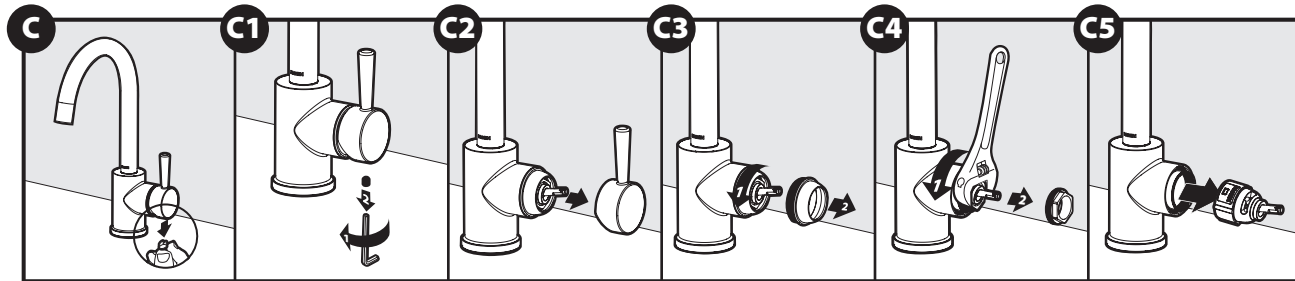
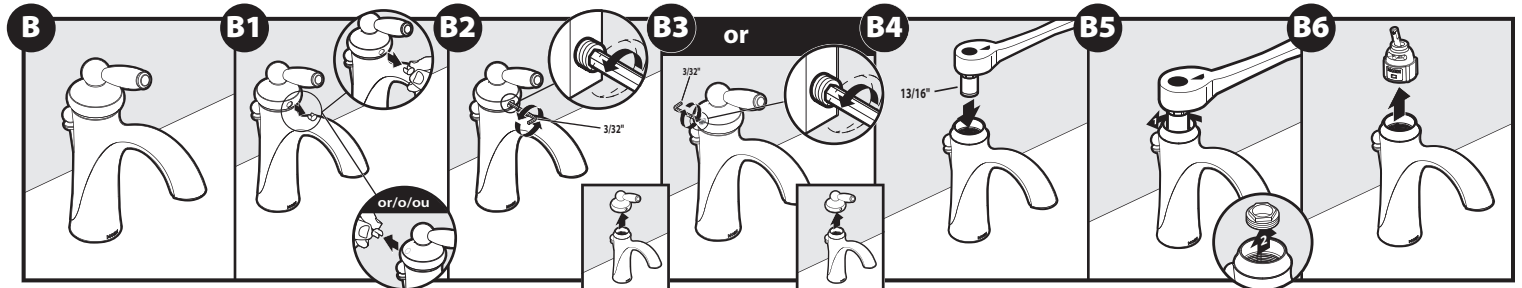
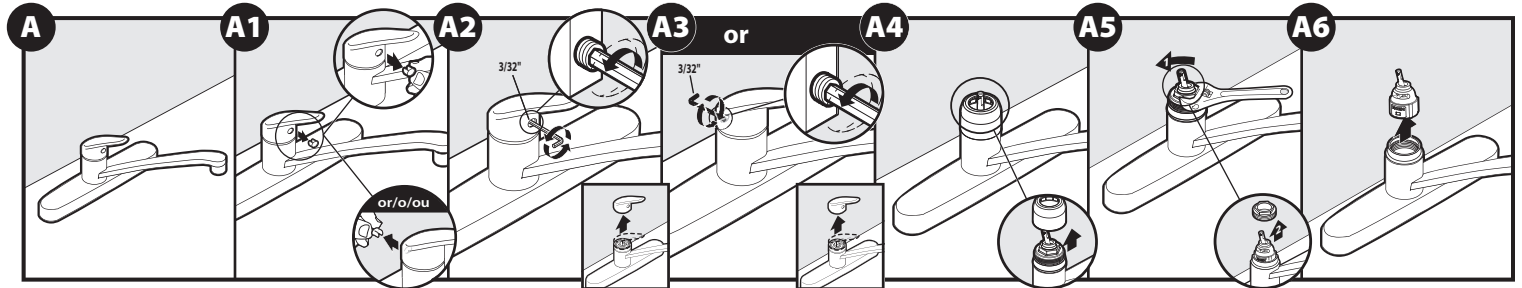


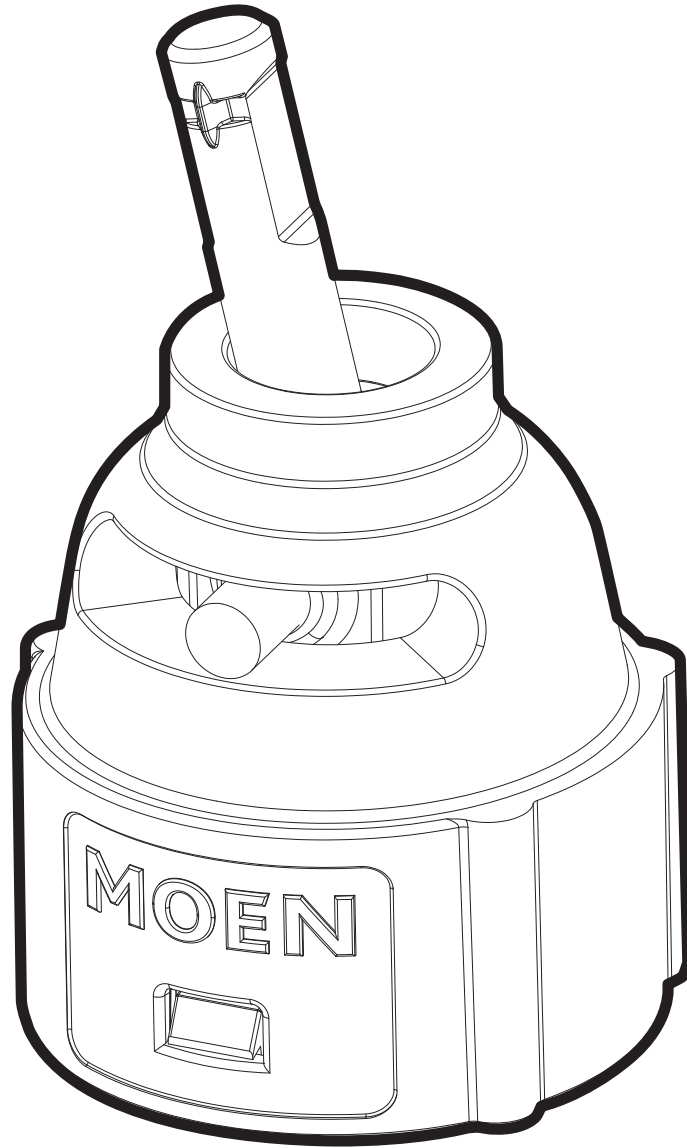
Identify cartridge nut type prior to cartridge replacement:

- If existing faucet has brass cartridge nut, **do not discard**. Use for reassembly.
- If cartridge nut is plastic, must replace with new cartridge nut.

Reverse steps for reassembly. Tighten nut by hand until tight, then rotate an additional 90° (1/4 turn) with a wrench.

CARTRIDGE REMOVAL





Find out more about home bath and faucets we have.