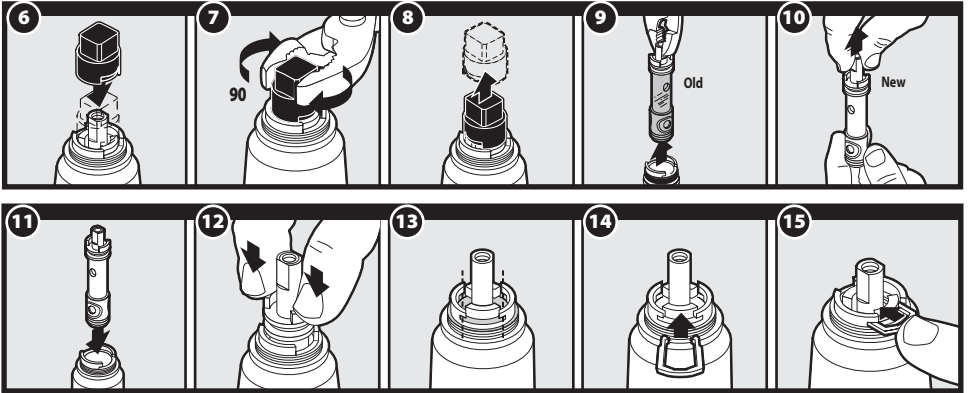




Buy it for looks. Buy it for life.®

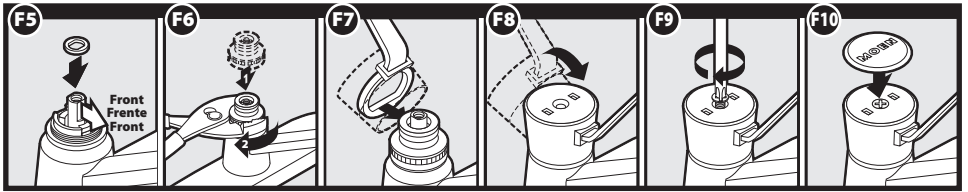
## 1200/1225 Installation Instructions

### CARTRIDGE REMOVAL



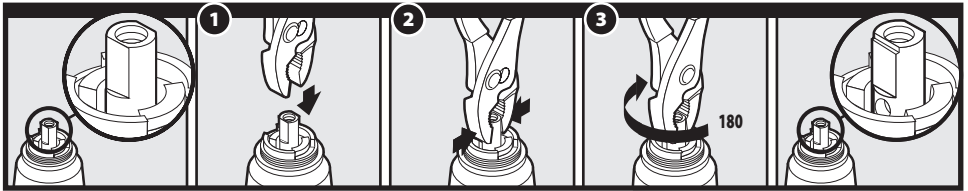
### REASSEMBLY

For A-E and G, reverse steps 1-5



### REVERSING

HOT AND COLD



## English

### ⚠ CAUTION — TIPS FOR REMOVAL OF OLD CARTRIDGE:

Always turn water supply OFF before removing existing faucet or disassembling the valve. Open faucet handle to relieve water pressure and ensure that complete water shut-off has been accomplished.

