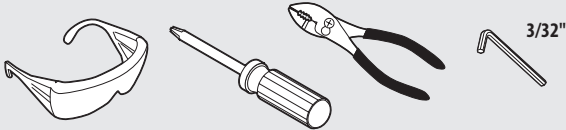




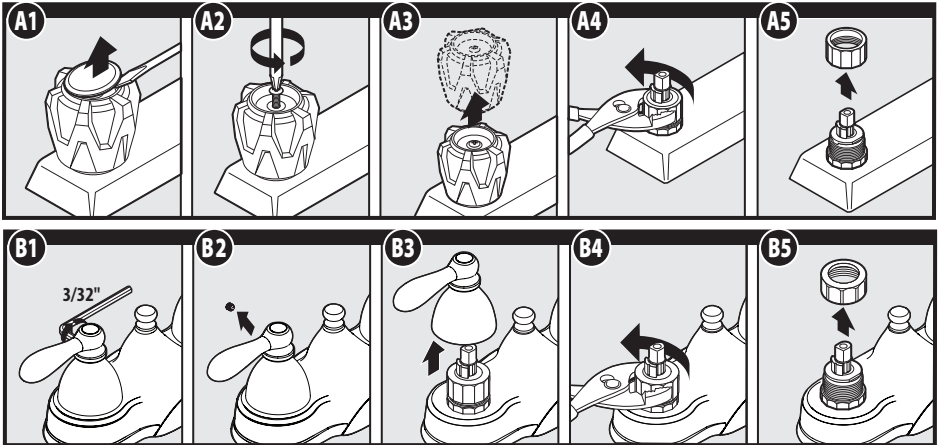
Buy it for looks. Buy it for life.®

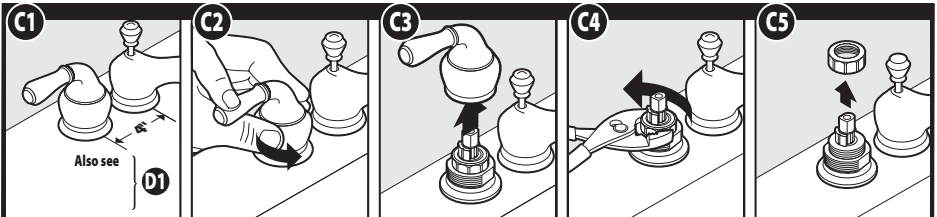
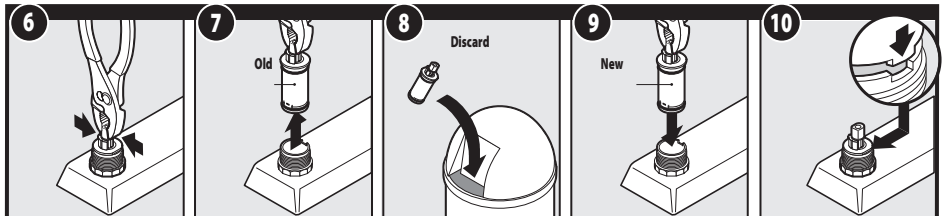
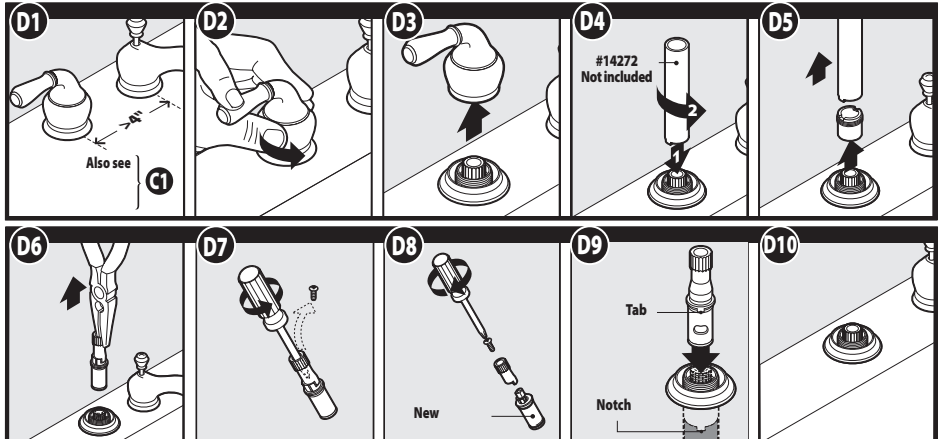
HELPFUL TOOLS For safety and ease of faucet replacement, Moen recommends the use of these helpful tools.



Installation Instructions

CAUTION — TIPS FOR REMOVAL OF OLD FAUCET: Always turn water supply OFF before removing existing faucet or disassembling the valve. Open faucet handle to relieve water pressure and ensure that complete water shut-off has been accomplished.



ENGLISH**CARTRIDGE REMOVAL/INSTALLATION****REASSEMBLY, REVERSE Steps 5-1****REASSEMBLY, REVERSE Steps D7-D1**