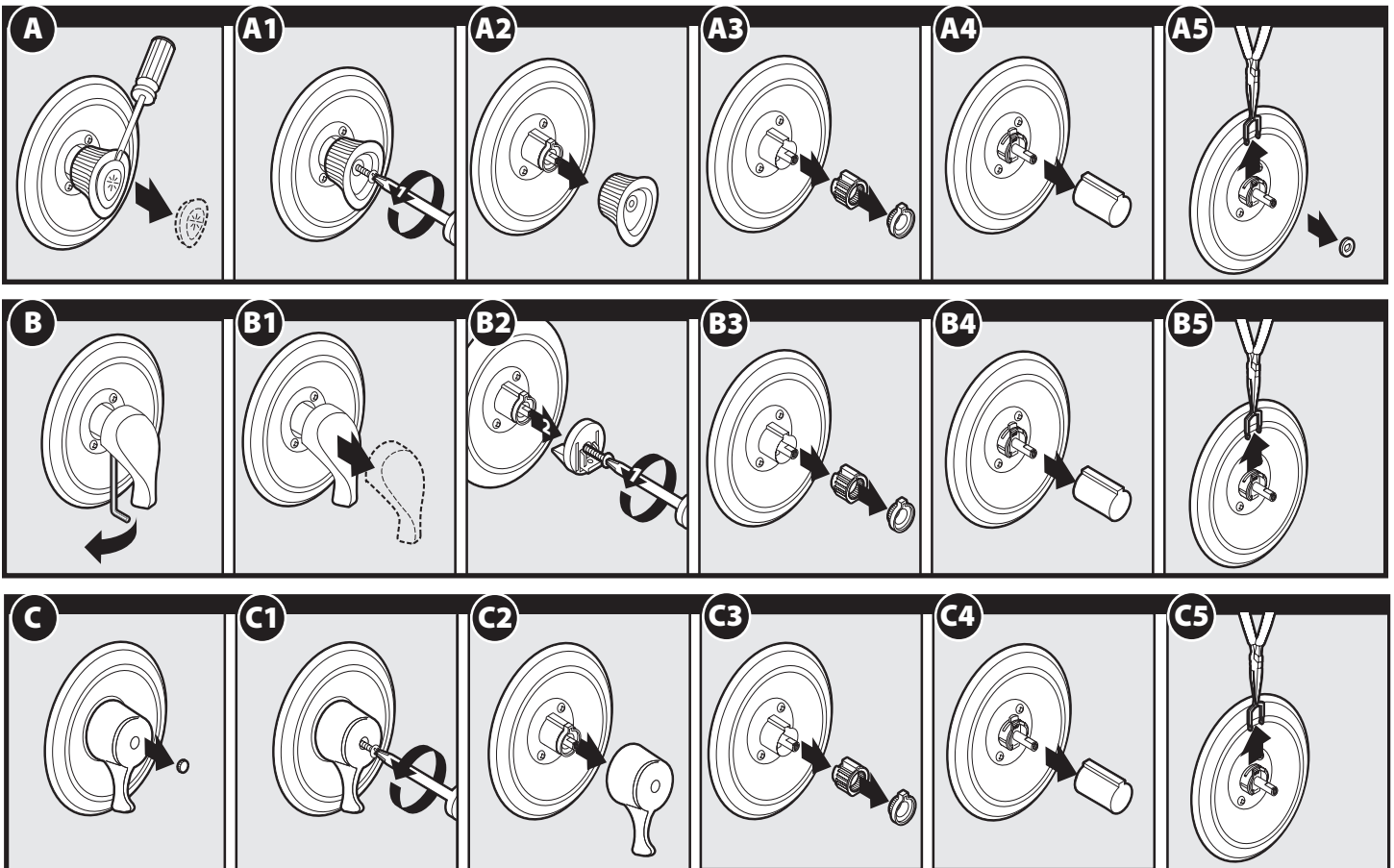
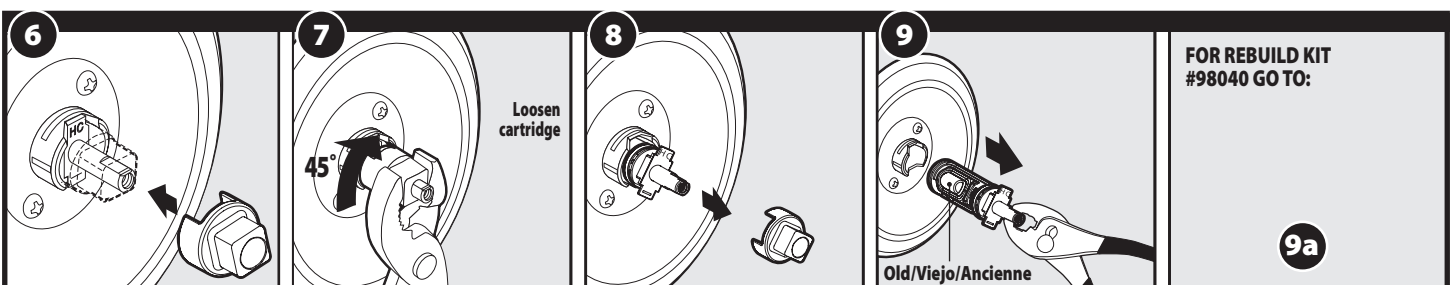


CAUTION: Always turn water supply OFF before removing existing faucet or disassembling the valve. Open faucet handle to relieve water pressure and ensure that complete water shut-off has been accomplished.

DISASSEMBLY



CARTRIDGE REMOVAL



CARTRIDGE INSTALLATION

10 Apply lubricant to cartridge oval on both sides.

11 Do not rotate

12 HC

13 Knob models only

TO REASSEMBLE HANDLE, REVERSE STEPS:
TURN STEM TO OFF POSITION BEFORE HANDLE OR KNOB REASSEMBLY

4 - 1

SETTING TEMPERATURE LIMIT

3a

3b 120F (48C) MAX.

3c 90

3d RECHECK 120F (48C) MAX.

3e OFF

REBUILDING CARTRIDGE

9a

9b

9c Old

9d New

9e MOEN P/N 141070

9f New

9g

9h MOEN P/N 141070

9i

9j Apply lubricant to cartridge oval on both sides.

9k YES SI/OUI NO NON

9l GO TO: **10**

REVERSING HOT AND COLD

13a HC

13b

13c 180°

13d HC

TO REASSEMBLE HANDLE, REVERSE STEPS:
TURN STEM TO OFF POSITION BEFORE HANDLE OR KNOB REASSEMBLY

4 - 1