

motion-activated SOLAR VIDEO CAMERA with SPOTLIGHT

ASSEMBLY & OPERATING INSTRUCTIONS



STOP! READ FIRST!

To use the Solar Video Camera with Spotlight, you need a computer.

This camera is compatible with both Microsoft and Apple computers. You will need a computer to sync the time and date on the camera as well as view the video files after recording them.

Before using the Solar Video Camera with Spotlight, you must:

1. Connect the solar panel to the video camera spotlight, make sure the switch is in the OFF position, and set the solar panel outside in the sun for three days to charge the batteries fully.
2. If using a Windows computer, plug the camera module into a USB port on your computer or laptop and run the Sync program (See "Setting the Date and Time On the Camera Module" on page 4).

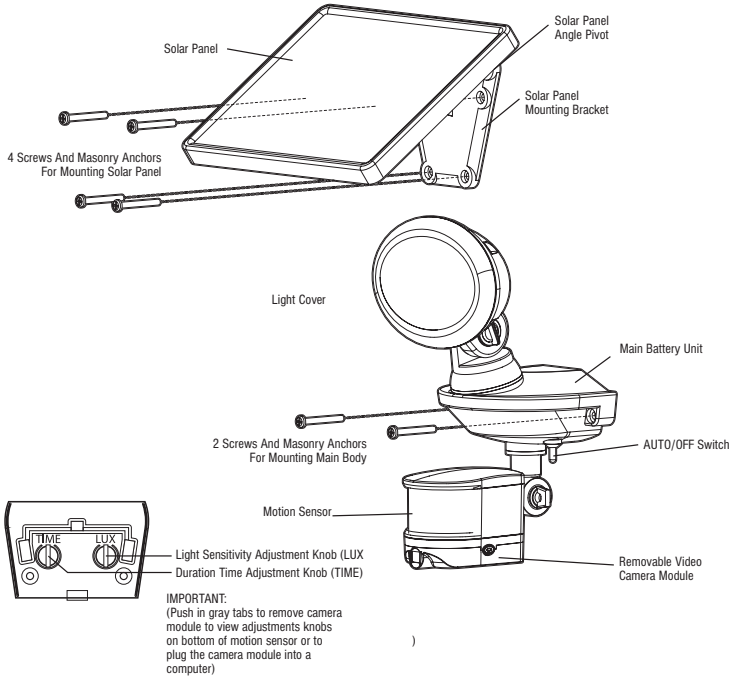
ABOUT YOUR SOLAR VIDEO CAMERA WITH SPOTLIGHT

This video camera spotlight requires no electrical wiring and is ideal for recording video at entrance areas, porches, driveways, carports, garages, and warehouses. It can even be used as a game camera. The video camera spotlight has a built-in motion sensor which turns on the camera automatically when movement of a heat source (such as people, animals, or cars) is detected in the area. In sufficient darkness, the 8 Surface Mount LEDs, with an estimated life of 30,000 hours, also activate and provide over 440 lumens of light for you to see and for the camera to record. The camera remains on while motion is detected. The camera saves the recorded videos to the (included) 8GB Micro-SD card which can hold up to 2.5 hours of video. When the Micro-SD card is full, the oldest files are overwritten. To access the videos, the camera module must be disconnected from the light and plugged into a computer's USB port.

A time control can be adjusted to allow the camera to stay on for 10 - 60 seconds after the motion sensor stops detecting motion. At night, the time control also controls the spotlight. The light sensitivity can be adjusted to allow the spotlight to start activating at varying darkness levels.

An included 3.7V 2.6Ah Lithium-ion rechargeable battery pack will need to be replaced when its charging ability decreases. When the batteries are fully charged, the spotlight portion will activate for up to 110 one-minute cycles per night. Low temperatures (14°F/-10°C) can result in limited functionality in the lithium-ion battery pack which may cause irregular activity in the video camera spotlight. Normal operation will return when the temperature rises.

INCLUDED PARTS:



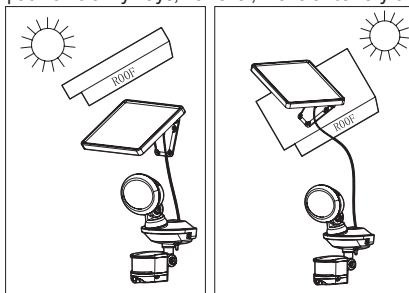
Carefully remove and identify all the parts from their protective packaging and lay them out.

CHOOSING A LOCATION FOR YOUR SOLAR VIDEO CAMERA WITH SPOTLIGHT

1. The video camera spotlight connects to its solar panel with a 15 foot power cord.
2. Ideally the solar panel should face the southern sky and receive at least 6-8 hours of direct sunlight per day to maximize the charging of the battery pack as shown in the images below.

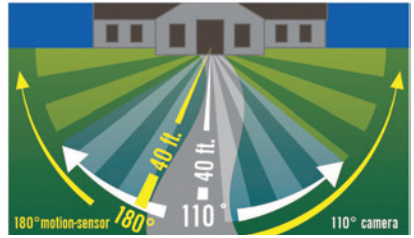
The solar panel will charge the battery pack on cloudy days; however, the total battery charge will be less than it would

Ideal Placements



be on a sunny day. Placing the solar panel in a shaded location or behind a window will prevent the battery pack from charging and the video camera spotlight from operating.

When deciding where to mount the video camera spotlight, keep in mind that the motion sensor has a field of vision of 180° (horizontal) at a distance of up to 40 feet when the surrounding temperature is 75°F. The distance range increases in colder temperatures and decreases in warmer temperatures. The camera has a resolution of 1280x720 pixels with a field of vision of 110° (horizontal). This means the motion sensor may pick up movement the camera does not record.



During the day, the camera will record everything in its field of view. At night, the darkness makes it difficult to see objects more than 16 feet away even if the spotlight has activated. Because of this, if the motion sensor is triggered by a moving object more than 16 feet away, the moving object may not appear on the video.

HOW TO INSTALL YOUR SOLAR VIDEO CAMERA WITH SPOTLIGHT:

NOTE: INSTALL YOUR VIDEO CAMERA SPOTLIGHT IN A LOCATION WHERE YOU CAN ACCESS THE CAMERA MODULE.

Tools Required:

1. Phillips head screwdriver.
2. Drill, if you want to mount the video camera spotlight on harder surfaces like cement, concrete, or brick.

To Install The Solar Video Camera with Spotlight:

1. Align the video camera spotlight on the wall and mark the locations of the two mounting holes with a pencil.
2. If mounting on cement, concrete, or brick, drill pilot holes for masonry anchors. The masonry anchors are not needed for mounting on wood.
3. Align the video camera spotlight on the wall and install the two screws using a screwdriver
4. Use the four (4) screws to mount the solar panel onto a solid surface following the same three steps above.
5. Adjust the angle of the solar panel by gently rotating the solar panel to a different locking position. Remember to face the panel south for direct sunlight exposure. See the "Choosing A Location" section on page 2.

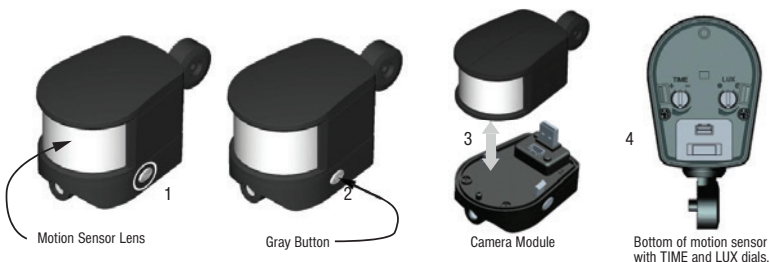
Fully charge the Solar Video Camera with Spotlight's battery pack.

1. Tightly connect the solar panel to the video camera spotlight power cable.
2. Ensure the power switch on the main body of your video camera spotlight is in the OFF position. In this position, the solar panel will charge the battery during the daytime, but the unit will not activate.
3. Leave the switch in the OFF position for 3 days or longer before initial use to charge the battery pack fully.

NOTE: YOU MUST CHARGE THE VIDEO CAMERA SPOTLIGHT BEFORE MOVING ON TO THE NEXT STEPS. THE CAMERA WILL NOT BE ABLE TO MAINTAIN AN ACCURATE DATE AND TIME IF THE VIDEO CAMERA SPOTLIGHT HAS NOT BEEN CHARGED FOR MORE THAN FOUR (4) DAYS.

HOW TO DISCONNECT THE CAMERA MODULE/ACCESS THE DIALS

1. Hold the motion sensor by the sides. Be very careful not to put your fingers on the lens of the motion sensor as doing so could damage the device.
2. Next, use your other hand to press the two gray buttons on both sides of the camera module to release the module.
3. The camera module should separate directly away from the motion sensor.
4. There are two adjustment dials: TIME and LUX. These dials are located on the bottom of the motion sensor and can be accessed once the camera module has been removed.



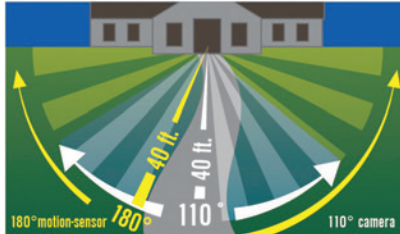
HOW TO TEST THE COVERAGE AREA

This section covers the steps you need to take to ensure your camera module will capture the desired area. This section is important to review anytime you are installing the video camera spotlight in a new location.

1. Remove the camera module as shown in “How To Disconnect the Camera Module/Access the Dials” on page 3.
2. The TIME dial is already set to the minimum (-) position and the LUX dial to the “light” (☀️) position. This ensures short test videos and spotlight activation.
3. Reattach the camera module to the motion sensor once you have checked the dials and switch the video camera spotlight to the AUTO position.

NOTE: WHEN THE VIDEO CAMERA SPOTLIGHT IS FIRST SWITCHED ON, IT WILL PERFORM A TEST ACTIVATION OF THE CAMERA AND SPOTLIGHT. THIS WILL HAPPEN REGARDLESS OF THE CONFIGURATION OF THE DIALS. THE CAMERA WILL NOT RECORD A VIDEO DURING THIS TEST.

4. Point the motion sensor in the direction that you want to detect motion.
5. You can test the camera during the day or night. The videos will not have as much detail at night due to the darkness. Test the coverage of the area by walking slowly around the area of detection. At night, the spotlight will activate when you are detected. If the spotlight does not activate, you may need to adjust the angle of the camera and sensor unit.



6. When you are satisfied with the detection area, trigger the camera three times. Trigger the camera video spotlight in the following ways:
 - Once entering from the left,
 - Once entering from the right, and
 - Once entering straight towards the light.

Be sure to let the camera module turn off between each trigger to ensure you get three separate video files. When the camera module is recording, you will see a blinking red light in the motion sensor and on the bottom of the camera module.

NOTE: DO NOT SWITCH THE VIDEO CAMERA SPOTLIGHT TO THE OFF POSITION WHILE RECORDING A VIDEO. THE CAMERA MODULE WILL NOT SAVE A VIDEO IF TURNED OFF WHILE RECORDING.

NOTE: THE FIELD OF VISION OF THE CAMERA IS 110°. THE FIELD OF VISION OF THE MOTION SENSOR IS 180°. BE SURE TO WALK ALL THE WAY IN FRONT OF THE CAMERA TO ENSURE YOU ARE CAPTURED IN THE VIDEO.

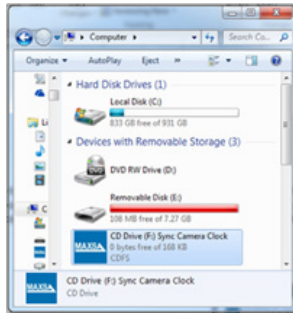
7. Remove the camera module from the video camera spotlight by following the directions in the “How to Disconnect the Camera Module” section on page 3. Then continue to the “Setting the Date and Time” section below

SETTING THE DATE AND TIME ON THE CAMERA MODULE (WINDOWS)

This section covers the steps you need to take to ensure your camera module has the correct date and time for your time zone; however it is not required and the video camera spotlight will still function and record videos if this section is skipped.

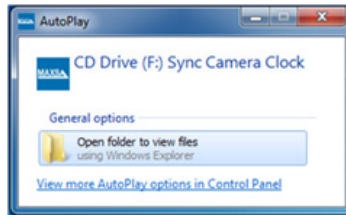
You can use a Microsoft or Apple computer. If you are using a computer with Mac OS, please refer to the instructions for Apple computers, beginning on page 7.

1. To set the time and date, the camera module must be removed from the spotlight and connected to a Windows compatible computer via the USB port.
2. Plug the camera module into a USB port on your computer. Your computer should show you two new drives. Both should be listed in the “Devices with Removable Storage” section in your Computer folder view. One is the camera, one is the storage card.

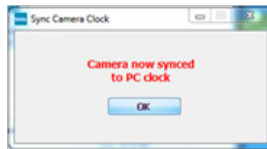


NOTE: THE DRIVE LETTERS MAY DIFFER ON YOUR COMPUTER. IDENTIFY THE DRIVE LABELED “REMOVABLE DISK” AND THE DRIVE LABELED “SYNC CAMERA CLOCK”.

Click “*Open folder to view files*” on the “*Sync Camera Clock*” Autoplay box. The camera does not automatically sync when you plug the camera into a USB port. You must run the program to sync the camera.



3. You will see two folders: One for Windows and one for MacOS. Open the Windows folder and click the program called, “*Sync Camera Clock*”.



4. A pop-up will confirm the camera is now synced to the PC clock.

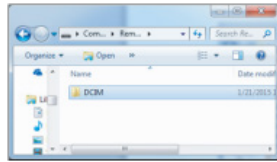
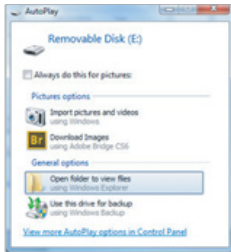
NOTE: YOU WILL NEED TO SYNC THE CAMERA MODULE AGAIN WHEN SEASONAL TIME CHANGES OCCUR. THE CAMERA MODULE WILL NOT AUTOMATICALLY ADJUST THE TIME. SYNCING THE CAMERA MODULE TO A COMPUTER ENSURES YOU HAVE THE PROPER TIME.

NOTE: IF THE VIDEO CAMERA SPOTLIGHT IS OFF OR THE BATTERY HAS NO POWER FOR MORE THAN FOUR (4) DAYS, THE DATE AND TIME MAY LOSE ACCURACY. REPEAT THE **SETTING THE DATE AND TIME** SECTION ON PAGE 4 TO SYN THE CAMERA AGAIN. BE SURE THE BATTERY PACK IN THE VIDEO CAMERA SPOTLIGHT IS FULLY CHARGED AS WELL.

VIEWING THE VIDEOS

You must follow the steps in this section anytime you wish to view the videos on the Micro-SD storage card located in the camera module. If the camera is already plugged into the computer, skip to step 3. If not, start with step 1. If the product or Micro-SD card is new and no testing has been done, the card will not have any files.

1. Disconnect the camera module by following the steps in **HOW TO DISCONNECT THE CAMERA MODULE** on page 3.
2. Plug the camera module into a USB port on your computer.
3. Open the drive for the storage card:
 - Use the AutoPlay menu for the Removable Disk that appeared when you first plugged in the camera module by choosing **OPEN FOLDER TO VIEW FILES** or your computer may open the drive automatically.



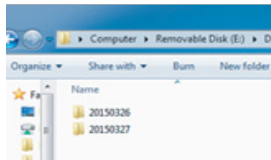
4. Double-click the folder labelled **DCIM**.

NOTE: IF THE MICRO-SD CARD IS NEW OR IF YOU HAVE NOT DONE THE TEST ACTIVATIONS, THE **DCIM** FOLDER WILL NOT EXIST YET.

5. The next set of folders you see are named by the date the videos were recorded. The folders holding the videos for each day will be named with the following format:

YYYYMMDD (Year, Month, Day)

For example, all videos recorded on August 6th, 2016 will be in a folder labeled 20160806. Find the day you want to view and double-click the folder.

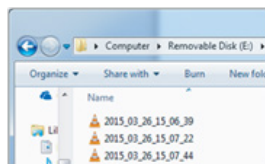


6. Within each folder, you will see all the video files recorded that day.

The video files will have the following format:

YYYY_MM_DD_HH_MM_SS (Year, Month, Day, Hour, Minute, Second)

The time stamp corresponds to the time the video started recording. The hours are listed in military time so will appear as 00 through 23. For example, a video recorded on August 6th, 2016 at 3:07 and 22 seconds PM will have the filename 2016_08_06_15_07_22.



7. Click on any of the files to view the video that was recorded at that time.

NOTE: THERE IS A ONE (1) SECOND DELAY BETWEEN THE TIME WHEN THE VIDEO CAMERA SPOTLIGHT IS ACTIVATED AND THE TIME WHEN THE CAMERA ACTUALLY STARTS RECORDING. MOVING OBJECTS MAY BE WELL WITHIN THE FIELD OF VIEW OF THE CAMERA WHEN THE VIDEO STARTS.

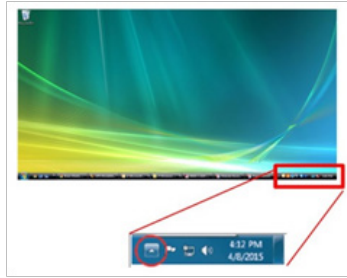
NOTE: AFTER THE MICRO-SD CARD IS FULL, THE CAMERA RECORDS OVER THE EARLIEST RECORDINGS, SO MAKE SURE YOU SAVE ANY FILES YOU WANT TO YOUR HARD DRIVE.

SAVING THE VIDEOS (WINDOWS)

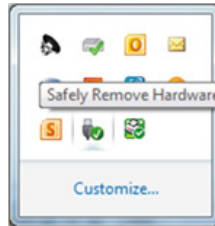
1. Open the folder on your hard drive where you want to store the videos.
2. Go back to the folder view for the Micro-SD card storage and highlight all of the files you wish to save.
3. Click and drag the group of files to the folder on your hard drive where you want to store the files.
4. Once the files have transferred, you can delete the files on the Micro-SD card storage.

REMOVING THE CAMERA MODULE FROM THE COMPUTER (WINDOWS)

1. Look at the system tray icons (shown in the red square in image 1 below) for the icon of a USB plug with a green check mark. Hover the mouse over the icon and a box should appear that says ***Safely Remove Hardware***. You may have to hit an upwards pointing arrow in the system tray to see the icon. This arrow is circled in red.



2. Right click on the icon of a USB plug with a green check mark and choose ***Eject USB 2.0 Device***.
3. Remove the camera module from the computer and return to the spotlight, but do not reconnect the camera to the motion sensor yet. You may want to change the TIME and LUX settings, which is covered on page 10.



NOTE: YOU WILL NEED TO SYNC THE CAMERA MODULE AGAIN WHEN SEASONAL TIME CHANGES OCCUR. THE CAMERA MODULE WILL NOT AUTOMATICALLY ADJUST THE TIME. SYNCING THE CAMERA MODULE TO A WINDOWS COMPUTER ENSURES YOU HAVE THE PROPER TIME.

NOTE: IF MORE THAN FOUR (4) DAYS PASS WITHOUT CHARGING THE VIDEO CAMERA SPOTLIGHT, THE DATE AND TIME ON THE CAMERA WILL LOSE ACCURACY. REPEAT THE ***HOW TO INSTALL YOUR SOLAR VIDEO CAMERA WITH SPOTLIGHT*** SECTION ON PAGE 3 TO FULLY CHARGE THE BATTERY PACK AND SYNC THE CAMERA AGAIN.

USING THE CAMERA MODULE WITH APPLE MAC OS

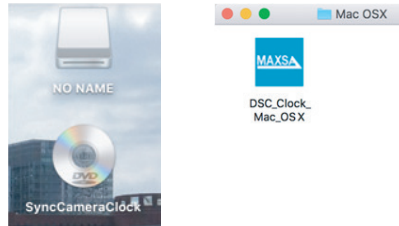
You will need to reference the main manual for other non-Apple specific operations.

The instructions in this addendum depict the steps to take when using an Apple computer running MacOS. If you are using a computer with Windows, please refer to the main instructions included with the product.

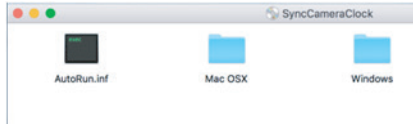
SETTING THE DATE AND TIME ON THE CAMERA MODULE (MAC OS)

This section covers the steps you need to take to ensure your camera module has the correct date and time for your time zone; however it is not required and the video camera spotlight will still function and record videos if this section is skipped.

1. To set the time and date, the camera module must be removed from the spotlight and connected to a computer via the USB port.
2. Plug the camera module into a USB port on your computer. Two new drives should appear in the upper right-hand corner of your desktop. The Sync Program drive will appear as a DVD called “SyncCameraClock” and the storage card will appear as a removable drive called “NO NAME”.

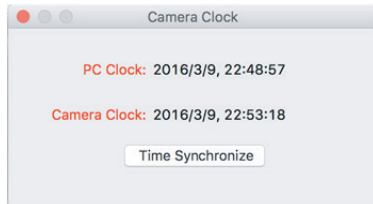


3. Open the “Sync Camera Clock” drive. You will see two folders: “Mac OSX” and “Windows”.
4. Open the “MacOSX” folder and you will see the Sync program. The camera does not automatically sync when you plug the camera into a USB port. You must run this program to sync the camera.

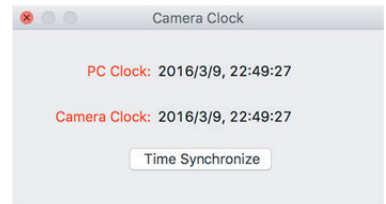


5. When the program opens, you will see a display that shows the date and time on the computer listed as “PC Clock” and the date and time on the camera listed as “Camera Clock”. They will most likely be different as the camera has not yet been synced. Click the “Time Synchronize” button to sync the camera clock to the computer clock.

Before:



After:



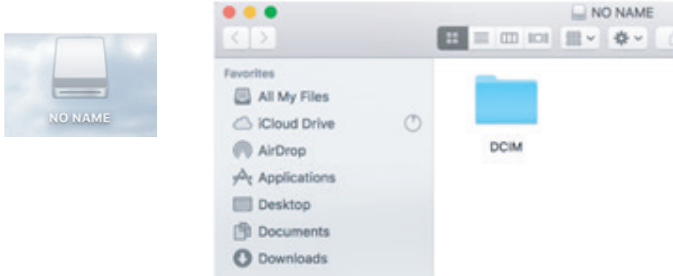
NOTE: YOU WILL NEED TO SYNC THE CAMERA MODULE AGAIN WHEN SEASONAL TIME CHANGES OC-CUR. THE CAMERA MODULE WILL NOT AUTOMATICALLY ADJUST THE TIME. SYNCING THE CAMERA MODULE TO A COMPUTER ENSURES YOU HAVE THE PROPER TIME.

NOTE: IF THE VIDEO CAMERA SPOTLIGHT IS OFF OR THE BATTERY HAS NO POWER FOR MORE THAN FOUR (4) DAYS, THE DATE AND TIME ON THE CAMERA MODULE MAY SLIP AND NO LONGER BE ACCU-RATE ONCE THE VIDEO CAMERA SPOTLIGHT IS SWITCHED BACK TO AUTO. REPEAT THE **SETTING THE DATE AND TIME** SECTION ABOVE TO SYNC THE CAMERA AGAIN. BE SURE THE BATTERY PACK IN THE VIDEO CAMERA SPOTLIGHT IS FULLY CHARGED AS WELL.

VIEWING THE VIDEOS (MAC OS)

You must follow the steps in this section anytime you wish to view the videos on the Micro-SD storage card located in the camera module. If the camera is already plugged into the computer, skip to step 3. If not, start with step 1. If the product or Micro-SD card is new and no testing has been done, the card will not have any files.

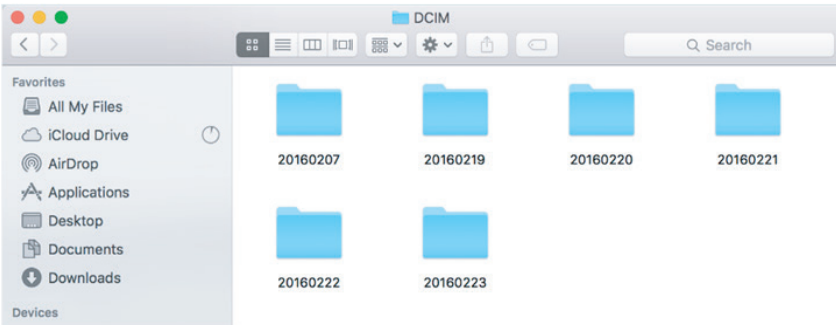
1. Disconnect the camera module by following the steps in **HOW TO DISCONNECT THE CAMERA MODULE** on page 3 of the main instruction booklet included with the product.
2. Plug the camera module into a USB port on your computer.
3. Open the drive for the storage card, labeled **NO NAME**.



4. Double-click the folder labelled **DCIM**.

NOTE: IF THE MICRO-SD CARD IS NEW OR IF YOU HAVE NOT TESTED THE COVERAGE AREA (PG. 4 OF THE MAIN INSTRUCTIONS), THE **DCIM** FOLDER WILL NOT EXIST YET.

5. The next set of folders you see are named by the date the videos were recorded. The folders holding the videos for each day will be named with the following format: YYYYMMDD (Year, Month, Day) For example, all videos recorded on August 6th, 2016 will be in a folder labeled 20160806. Find the day you want to view and double-click the folder.
6. Within each folder, you will see all the video files recorded that day. The video files will have the following format: YYYY_MM_DD_HH_MM_SS (Year, Month, Day, Hour, Minute, Second). The time stamp corresponds to the time the video started recording. The hours are listed in military time so will appear as 00 through 23. For example, a video recorded on August 6th, 2016 at 3:07 and 22 seconds PM will have the filename 2016_08_06_15_07_22.



7. Click on any of the files to view the video that was recorded at that time.

NOTE: THERE IS A ONE (1) SECOND DELAY BETWEEN THE TIME WHEN THE VIDEO CAMERA SPOTLIGHT IS ACTIVATED AND THE TIME WHEN THE CAMERA ACTUALLY STARTS RECORDING. BECAUSE OF THIS DELAY, MOVING OBJECTS MAY BE WELL WITHIN THE FIELD OF VIEW OF THE CAMERA WHEN THE VIDEO CAMERA STARTS RECORDING.

NOTE: AFTER THE MICRO-SD CARD IS FULL, THE CAMERA RECORDS OVER THE EARLIEST RECORDINGS, SO MAKE SURE YOU SAVE ANY FILES YOU WANT TO YOUR HARD DRIVE.

SAVING THE VIDEOS (MAC OS)

1. Open the folder on your hard drive where you want to store the videos.
2. Go back to the folder view for the Micro-SD card storage and highlight all of the files you wish to save.
3. Click and drag the group of files to the folder on your hard drive where you want to store the files.
4. Once the files have transferred, you can delete the files on the Micro-SD card storage.

QUESTIONS AND TROUBLESHOOTING

For any questions or troubleshooting, you can refer to the Troubleshooting section starting at the bottom of page 9 in the main product manual.

ADJUSTING THE LUX AND TIME DIALS

The video camera spotlight is factory set to record 10 seconds after motion stops. This is the recommended setting to conserve video storage space on the Micro-SD card. If you want to increase the recording time and how long the spotlight stays on at night, move the switch on the main body of the spotlight to the AUTO position and follow the directions below.

Recording Duration Adjustment (TIME)

The TIME dial sets the duration that the unit remains activated after motion stops. The time period has an adjustable range of 10 seconds to 1 minute. When it is dark enough, the spotlight is also controlled by the TIME dial.

- To decrease the time period, move the dial toward the (-) symbol.
- To increase the time period, move the dial toward the (+) symbol.

Test the time period by triggering the motion sensor at night and measure the time period the spotlight stays on. Adjust the TIME dial until the desired duration is reached. The camera will stop recording at the same time the spotlight turns off. During the day, only the camera will activate.

A shorter TIME setting will conserve battery life and storage space on the Micro-SD card. For best results, use the shortest TIME setting for your location as possible.

Light Level Adjustment (LUX)

The LUX dial controls the amount of darkness needed for the motion sensor to be able to trigger the spotlight. It does not impact the camera which will activate at all times, day or night, regardless of the spotlight. The video camera spotlight is factory set to activate the spotlight when there is more daylight so the dial is set towards bright (☀). To allow the spotlight to activate only after the sun has set, move the dial toward dark (☾).

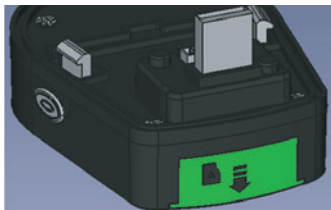
Once you are done adjusting the dials, turn the switch on the main body to the OFF position. Re-attach the camera module to the motion sensor.

Move the switch back to the AUTO position. Your video camera spotlight is now ready for use!

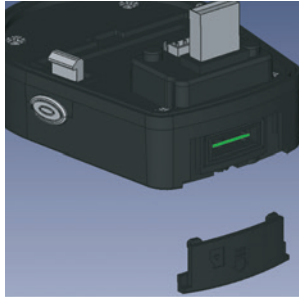
REPLACING THE MICRO-SD CARD

You may want to use more than one Micro-SD card or you may want to use a Micro-SD card with a different capacity. To remove or replace the Micro-SD card:

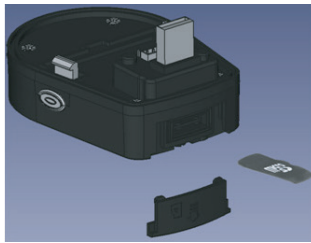
1. Remove the camera module from the motion sensor.
2. Locate the sliding cover on the back of the camera module with a picture of a Micro-SD card.



3. Use a Phillips-head screwdriver to remove the screw in the bottom of the cover, then slide the cover off the camera module. You will see the back of the Micro-SD card.



4. Lightly press the Micro-SD card into the camera module until you hear a slight click. Then remove your finger and the Micro-SD card should slowly spring back out of the module.



5. Grab the back end of the Micro-SD card with your fingertips and remove it from the camera module. To replace the Micro-SD card, push it back into the slot on the back of the camera module. Be sure it is in the correct orientation! This can be seen in the image below.



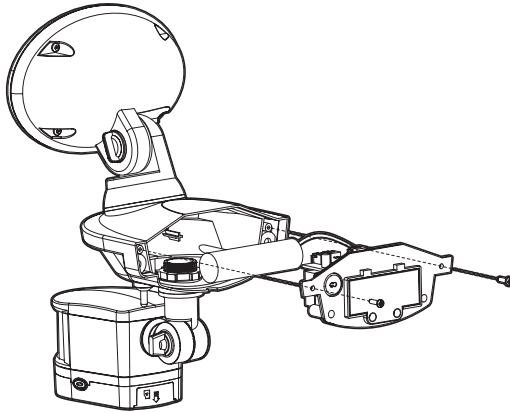
6. Once in place, lightly press the Micro-SD card into the camera module until you hear a slight click. Then release your finger. The Micro-SD card should bounce back slightly, but still be firmly in place in the camera module.

NOTE: THE BACK OF THE MICRO-SD CARD SHOULD NOT BE FLUSH WITH THE GASKET. IT SHOULD BE SLIGHTLY DEEPER INTO THE CAMERA MODULE SO IT IS ALMOST HARD TO TOUCH WITH YOUR FINGER. IF IT LOOKS FLUSH WITH THE GASKET AFTER HEARING IT CLICK, TAKE IT OUT AND TRY AGAIN. IT MAY NOT RECORD PROPERLY IF IT IS NOT INSERTED CORRECTLY.

7. Replace the sliding cover and put the screw back in the bottom of the cover with the screwdriver.
8. Reconnect the camera module to the motion sensor.

REPLACING THE BATTERY PACK

When the charging ability of the battery pack decreases, it should be replaced with a new 3.7V/2.6Ah Lithium-Ion battery pack. Follow the steps below when replacing the battery pack.



1. Move the power switch on the main body to the OFF position.
2. Unplug the solar panel and take the video camera spotlight down from where it is mounted.
3. Remove the four (4) screws on the back of the main unit that hold the halves together.
4. Once the unit is open, carefully remove the bracket holding the battery pack in place by unscrewing the two (2) screws as indicated in the diagram above.
5. Carefully unplug the battery pack from the unit. Be sure to pull at the plug. Do not pull by the wires as this may damage the unit.
6. Place the new battery pack and make sure it is in the same position and orientation as the original battery pack removed in step 4, taking care not to damage any cables.
7. Replace the bracket to hold the battery pack in place by using the two (2) screws removed in step 4, taking care not to damage any cables.
8. Re-assemble the main unit by screwing the two (2) halves of the main body together securely.
9. Once assembled, remount your video camera spotlight.
10. Repeat the steps in the "How to Install Your Solar Video Camera with Spotlight" on page 3 to ensure your new battery pack is charged fully.

NOTE: DO NOT DISPOSE OF BATTERY PACK IN GENERAL HOUSEHOLD TRASH OR INTO A FIRE SINCE THE BATTERY PACK MAY EXPLODE. CONSULT YOUR LOCAL REGULATIONS FOR CORRECT DISPOSAL OF THE BATTERY PACK.

MAINTENANCE TIPS:

The LED lights in your video camera spotlight will last up to 30,000 hours.

To keep your video camera spotlight looking its best, keep the solar panel free of dust and deposits by wiping occasionally with a dry cloth or with warm soapy water. It is important that the solar panel is kept free of dirt and debris at all times. A dirty solar panel will not allow the battery to be fully charged. This will shorten the life of the battery and may cause the video camera spotlight to malfunction.

The video camera spotlight should always be mounted vertically with the light on top and motion sensor and camera module on the bottom. Mounting it any other way than as shown in the image on page 2 may compromise the camera function.

Cold Weather Functionality

In temperatures below 14°F, performance of the Lithium-ion battery pack may be reduced. Normal performance will return when the temperature rises.

Safety Tips

Do not immerse the video camera spotlight in water or any other liquid.

Storage

If you wish to store your video camera spotlight indoors for more than two or three days, turn the power switch to the OFF position. Battery capacity may be reduced during prolonged storage.

NOTE: THE DATE AND TIME ON THE CAMERA WILL SLIP IF MORE THAN 4 DAYS PASS WITHOUT CHARGING THE VIDEO CAMERA SPOTLIGHT. WHEN YOU ARE READY TO USE THE VIDEO CAMERA SPOTLIGHT AGAIN, YOU MUST FOLLOW ALL THE DIRECTIONS AS THOUGH YOU WERE SETTING UP THE VIDEO CAMERA SPOTLIGHT FOR THE FIRST TIME. START WITH THE **HOW TO INSTALL YOUR SOLAR VIDEO CAMERA WITH SPOTLIGHT** SECTION ON PAGE 3.

TROUBLESHOOTING:

PROBLEM	POSSIBLE SOLUTIONS
I cannot see the Sync Program on my computer.	<ul style="list-style-type: none">• The camera module may not be properly plugged-in. Remove the module and then plug it back in.
Computer wants to format the disk.	<ul style="list-style-type: none">• The micro-SD may not be installed properly. Follow the steps in the “Replacing the Micro-SD Card” section on page 7 to re-install the micro-SD card properly.
When the camera is plugged into the computer, there are no video folders in the DCIM folder on the Removeable Disk.	<ul style="list-style-type: none">• Make sure the video camera spotlight has been switched to the AUTO position.• Make sure the camera module has been properly attached to the motion sensor.• Make sure the micro-SD card is installed properly and the rubber gasket is in place. The back of the micro-SD little deeper into the camera module so it is almost hard to hearing it click, take it out and try again.• Be sure to leave the switch in the AUTO position for the duration of the light cycle as turning it OFF before the end of the cycle will prevent the video(s) from being stored.• Make sure there have been multiple activations. When you first turn the video camera spotlight on, it runs a test activation but does not record a video. It will record all activations after the test activation.• If the camera still does not store the videos, please contact MAXSA for further assistance.
Time and Date seem wrong.	<ul style="list-style-type: none">• Remember to sync your camera whenever a time change occurs.• If the date and time are off considerably, the battery pack may need to be recharged. If the video camera spotlight has not charged for more than four (4) days, it may cause a loss of accuracy. Turn the video camera spotlight off and let it charge for 3 days while the camera module is plugged into the light. After 3 days, remove the camera module and sync it with your computer. Plug the camera module back into the bottom of the motion sensor and move the switch on the main body to the AUTO position. The date and time should be correct.

PROBLEM	POSSIBLE SOLUTIONS
Night videos show very dark footage	<ul style="list-style-type: none"> • The LUX dial may be pointed too far towards the (). This prevents the light from activating unless it is extremely dark. Turn the LUX dial so it is halfway between the (☼) and the (☺). This sets the product so the light activates at dusk. Your videos should now have more light. If the light still does not activate early enough, continue to turn the LUX dial towards the (☼) until it activates at an acceptable time. • Something may have activated the motion sensor but never made it within the field of view of the camera. The motion sensor has a field of view of 180°, but the camera only has a field of view of 110°. Also, the motion sensor has a range of 40 feet, but the camera can only see things up to 16 feet away when it is dark, so the object that activated the camera may be too far away to appear on the video.
Videos only show ground.	<ul style="list-style-type: none"> • The motion sensor and camera may be pointed too low. Try raising them to direct them more towards the desired area. Aim for where a person's torso and head would appear.
There are videos with nothing moving in them.	<ul style="list-style-type: none"> • Something may have activated the motion sensor but never made it within the field of view of the camera. The motion sensor has a field of view of 180°, but the camera only has a field of view of 110°. Also, the motion sensor has a range of 40 feet, but the camera can only see things up to 16 feet away when it is dark, so the object that activated the camera may be too far away to appear on the video.
It looks like there should be more footage at the beginning of the video.	<ul style="list-style-type: none"> • There is a one (1) second delay between when the video camera spotlight is activated and when the camera starts recording. This means moving objects may be well within the field of vision of the camera when the video starts.
Should there be a video immediately after switching the light to AUTO?	<ul style="list-style-type: none"> • No, the video camera spotlight performs a test activation when it is first switched to AUTO. No video is recorded during this test.
Should there be a video of me turning the light OFF	<ul style="list-style-type: none"> • No. The camera does not save a video if switched OFF while recording.
How do I know the camera is recording?	<ul style="list-style-type: none"> • You will see a blinking red light in the motion sensor and on the bottom of the camera module, denoting the camera is recording. • NOTE: The exception to this rule is when the video camera spotlight is performing the test activation when the switch is put in the AUTO position. You will see the blinking lights, but the camera will not be recording for the test activation.
Light is not as bright as normal.	<ul style="list-style-type: none"> • Move the LUX control more to the dark (☺) position. • Move the TIME control towards the (-) position to have shorter videos. • Battery charge may be low. Turn the power switch to the OFF position and charge the battery for three (3) sunny days with the solar panel placed in direct sunlight.

PROBLEM	POSSIBLE SOLUTIONS
Light will not switch on when there is movement in the detection area.	<ul style="list-style-type: none"> • Ensure that the power switch on the main body has been turned to the AUTO position. • Ensure that the motion sensor has been positioned to face oncoming movement. • Ensure that the battery has been fully charged in direct sunlight for 3 sunny days. Refer to the “How to Install Your Solar Video Camera with Spotlight” section on page 3. • Check to see that the solar panel is facing south so that it receives direct sunlight for most of the day, enabling the battery to fully charge. • Check to see that the LUX control has not been set too far towards the moon symbol. Setting the LUX control too far towards dark (☾) will cause the video camera spotlight to turn on only in complete darkness. • Check to see that the motion sensor is not near night time light sources such as street lights.
Light switches on for no apparent reason.	<ul style="list-style-type: none"> • Moving trees, traffic, pets or birds may be getting in the area of detection. This may be unavoidable; however the sensor could be redirected to a height where this is less likely to occur. • If there are reflective objects in the detection area such as windows, water, or white walls, you may need to redirect or possibly reposition the motion sensor. • Test the motion sensor by covering it completely with cardboard and waiting several minutes to make sure it does not detect motion. If the light still switches on, please contact MAXSA for further assistance.
Light only switches on at night.	<ul style="list-style-type: none"> • The LUX control may be set too far towards the dark (☾) position. • Reposition the motion sensor.
Light switches on during the day	<ul style="list-style-type: none"> • The LUX control may be set too far towards the light (☀) position. • Reposition the motion sensor.
Light quickly flashes on and off.	<ul style="list-style-type: none"> • Move the LUX control more to the dark (☾) position. • Move the TIME control towards the (-) position to have shorter videos. • Battery charge may be low. Turn the power switch to the OFF position and charge the battery for three (3) sunny days with the solar panel placed in direct sunlight. If the battery does not charge, call MAXSA for a replacement.

SPECIFICATIONS

SPOTLIGHT

POWER SOURCE	Solar – amorphous solar panel
FUNCTION	Motion-activated
POWER STORAGE	3.7V/2.6Ah lithium-ion battery pack
LIGHT/CAMERA DURATION	10 - 60 Seconds after motion stops
LUMENS	440
LIGHT COLOR	6500K (cool white or daylight color)
WEATHERPROOF RATING	IP44
MAXIMUM SPOTLIGHT RUNTIME	Up to 110 minutes on a full charge
MOTION DETECTION ANGLE	180°
MAXIMUM DETECTION DISTANCE	40 Feet (12.2 Meters)

SECURITY CAMERA

CAMERA ANGLE:	110°
CAMERA RESOLUTION	1280X720 pixels
CAMERA CAPTURE SPEED	30 Frames/sec daytime, 15 frames/sec nighttime.
INCLUDED VIDEO STORAGE	8 GB Micro-SD card
HOURS OF VIDEO ON INCLUDED STORAGE	Up to 2.5 hours
COMPUTER COMPATIBILITY:	Windows (Microsoft), Mac OS (Apple)

MADE IN CHINA

Please save these instructions for future reference.



motion-activated **SOLAR SECURITY** **VIDEO CAMERA & FLOODLIGHT**

Addendum: Using the Camera Module with Apple MacOS

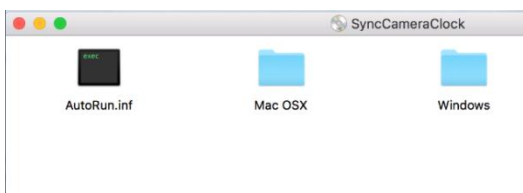
You will need to reference the main manual for other non-apple specific operations.

The instructions in this addendum depict the steps to take when using an Apple computer running MacOS. **If you are using a computer with Windows, please refer to the main instructions included with the product.**

SETTING THE DATE AND TIME ON THE CAMERA MODULE

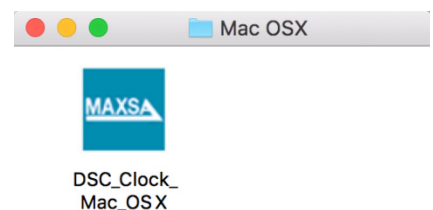
This section covers the steps you need to take to ensure your camera module has the correct date and time for your time zone; however it is not required and the video camera floodlight will still function and record videos if this section is skipped.

1. To set the time and date, the camera module must be removed from the floodlight and connected to a computer via the USB port.
2. Plug the camera module into a USB port on your computer. Two new drives should appear in the upper right-hand corner of your desktop. The Sync Program drive will appear as a DVD called "SyncCameraClock" and the storage card will appear as a removable drive called "NO NAME".



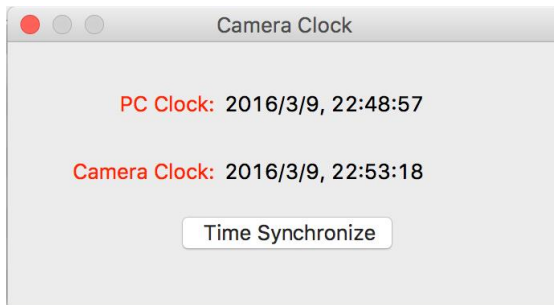
3. Open the "**Sync Camera Clock**" drive. You will see two folders: "Mac OSX" and "Windows".

4. Open the "MacOSX" folder and you will see the Sync program. The camera does not automatically sync when you plug the camera into a USB port. You must run this program to sync the camera.

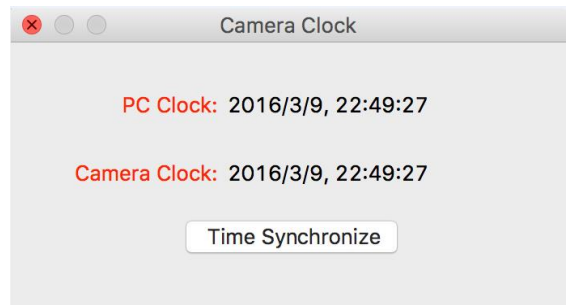


- When the program opens, you will see a display that shows the date and time on the computer listed as "PC Clock" and the date and time on the camera listed as "Camera Clock". They will most likely be different as the camera has not yet been synced. Click the "Time Synchronize" button to sync the camera clock to the computer clock.

Before:



After:



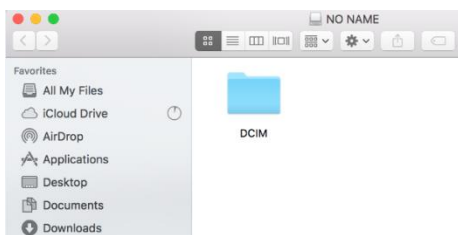
NOTE: You will need to sync the camera module again when seasonal time changes occur. The camera module will not automatically adjust the time. Syncing the camera module to a computer ensures you have the proper time.

NOTE: If the video camera floodlight is OFF or the battery has no power for more than four (4) days, the date and time on the camera module may slip and no longer be accurate once the video camera floodlight is switched back to AUTO. Repeat the "**Setting the Date and Time**" section above to sync the camera again. Be sure the battery pack in the video camera floodlight is fully charged as well.

VIEWING THE VIDEOS

You must follow the steps in this section anytime you wish to view the videos on the micro-SD storage card located in the camera module. **If the camera is already plugged into the computer, skip to step 3.** If not, start with step 1. If the product or micro-SD card is new and no testing has been done, the card will not have any files.

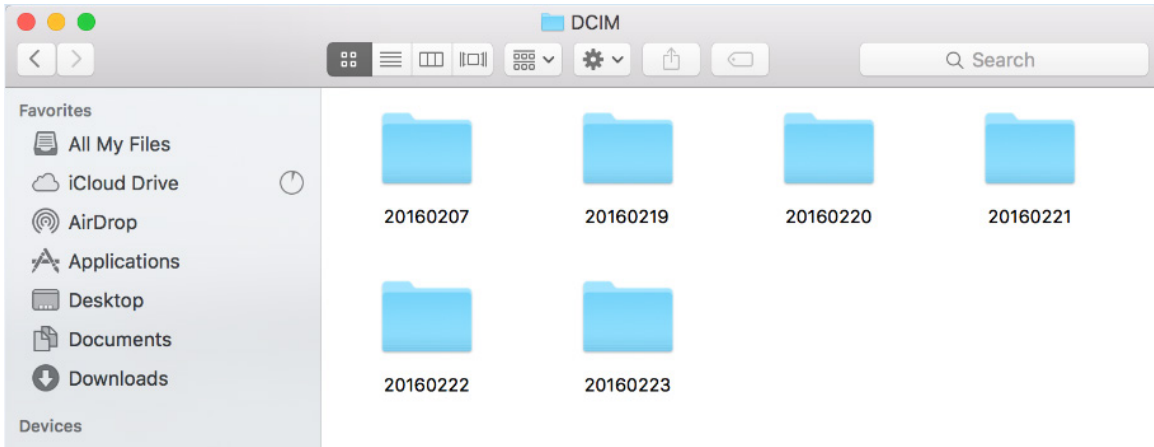
- Disconnect the camera module by following the steps in "**How to Disconnect the Camera Module**" on page 3 of the main instruction booklet included with the product.
- Plug the camera module into a USB port on your computer.
- Open the drive for the storage card, labeled "NO NAME".



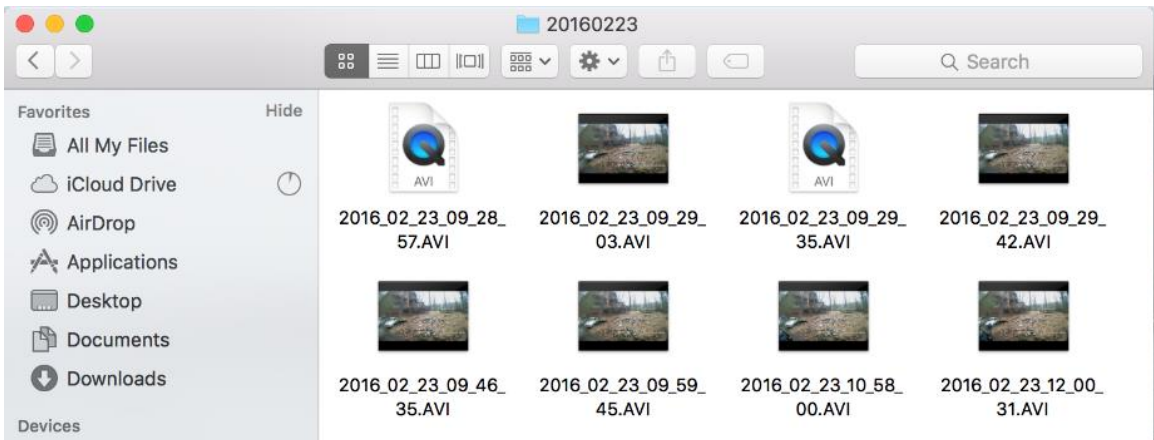
- Double-click the folder labelled "**DCIM**".

NOTE: If the micro-SD card is new or if you have not tested the coverage area (pg. 4 of the main instructions), the "**DCIM**" folder will not exist yet.

5. The next set of folders you see are named by the date the videos were recorded. The folders holding the videos for each day will be named with the following format: **YYYYMMDD** (Year, Month, Day)
For example, all videos recorded on March 23rd, 2016 will be in a folder labeled 20160223. Find the day you want to view and double-click the folder.



6. Within each folder, you will see all the video files recorded that day. The video files will have the following format: **YYYY_MM_DD_HH_MM_SS** (Year, Month, Day, Hour, Minute, Second).



The time stamp corresponds to the time the video started recording. The hours are listed in military time so will appear as 00 through 23. For example, a video recorded on February 23rd, 2016 at 3:07 and 22 seconds PM will have the filename 2016_02_23_15_07_22.

7. Click on any of the files to view the video that was recorded at that time.

NOTE: There is a one (1) second delay between the time when the video camera floodlight is activated and the time when the camera actually starts recording. Because of this delay, moving objects may be well within the field of view of the camera when the video camera starts recording.

NOTE: After the micro-SD card is full, the camera records over the earliest recordings, so make sure you save any files you want to your hard drive.

SAVING THE VIDEOS

1. Open the folder on your hard drive where you want to store the videos.
2. Go back to the folder view for the micro-SD card storage and highlight all of the files you wish to save.
3. Click and drag the group of files to the folder on your hard drive where you want to store the files.
4. Once the files have transferred, you can delete the files on the micro-SD card storage.