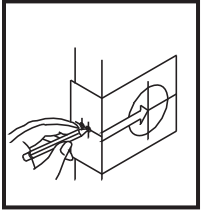


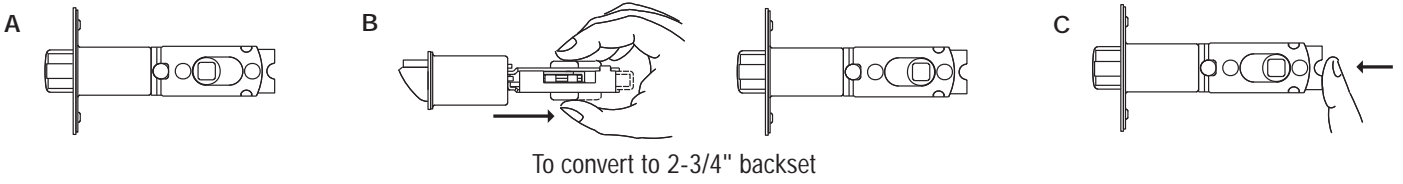
Backset



Backset is the distance from the door edge to the center of the hole on the door face. Master Lock door locks are supplied with an adjustable latch which can fit 2-3/8" (60mm) or 2-3/4" (70mm) backset.

Follow steps below to change backset.

Follow steps below to change backset.



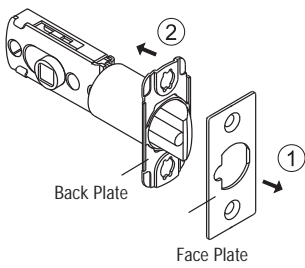
a. This latch is for 2-3/8" (60mm) backset.

b. Keep spindle cam in correct position as illustrated. Pull spindle cam all the way to the right.

c. Your latch is now set for 2-3/4" (70mm) backset. To reset 2-3/8" backset, push spindle all the way back to the left.

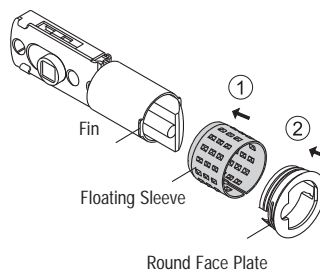
Attach the latch face that matches the mortise in the edge of your door

To change latch faces:



1. Use a flat screwdriver to separate the face plate.
2. Snap selected latch face onto backplate.

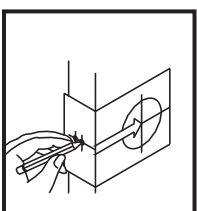
For drive in installation:



Push latchbolt to the end and hold. Align the round face plate opening with the fin on the latch. Push to the end and rotate the round face plate counter-clockwise. After assembly, release latchbolt to fully extend. Move the floating sleeve toward the round face plate until the edge fits into the ring opening of the round face plate.

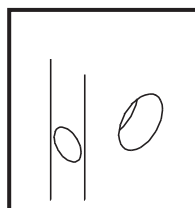
Locate floating sleeve and round face plate and proceed.

Mark door with template



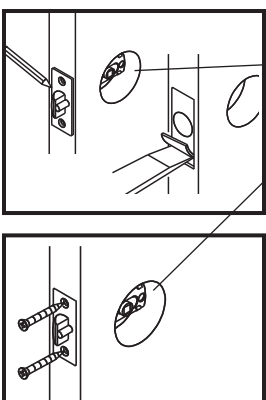
Select 2-3/8" or 2-3/4" (60mm or 70mm) backset as desired and mark center of hole on door face.

Drill holes



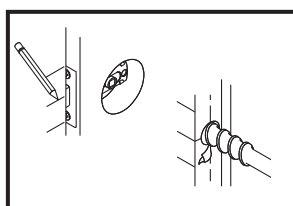
Drill 2-1/8" (54mm) hole on door face from both sides to avoid wood splitting. Drill 1" (25.4mm) hole for latch.

Install latch



Insert latch in hole, mark outline of face plate and chisel 11/64" (4mm) deep.

Insert latch and tighten screws.



Close door to mark horizontal centerline of strike.

Measure one half of door thickness from doorstop and mark for the vertical centerline of strike. Drill 1" hole, 1/2" deep at the intersection of the horizontal and vertical centerlines.

TEMPLATE

Fold on Dotted Line and Fit on Door Edge

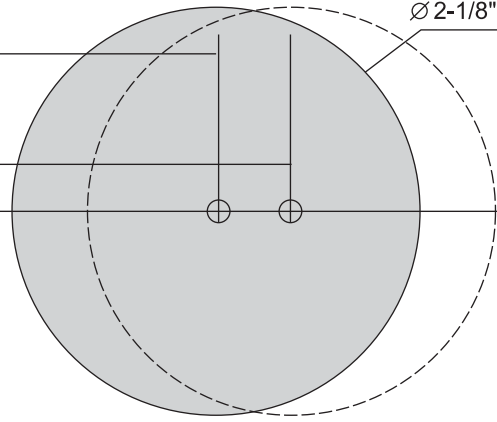
1-3/4" 45mm
1-9/16" 40mm
1-3/8" 35mm

Make 1" Hole at Center of Door Edge

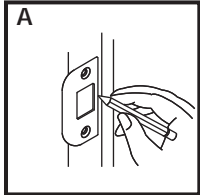
For Backset 2-3/8"

For Backset 2-3/4"

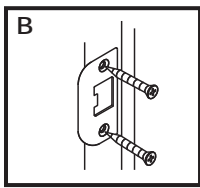
Ø 2-1/8" (54mm)



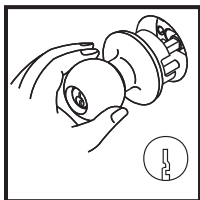
Install strike



- Match screw holes on strike with vertical centerlines on jamb. Mark outline of strike plate and chisel out until strike is flush with jamb. (Approx. 1/8")
- Install strike and tighten screws.

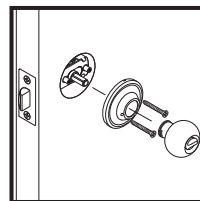


Install outside knob (or lever)



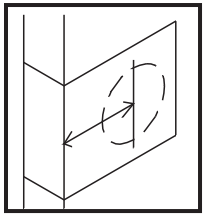
Insert spindle through latch. Press flush against door. (NOTE: Key hole must be in down position).

Install inside knob (or lever)

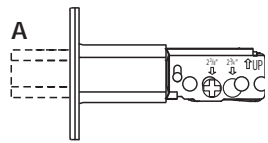


Install inside knob (or lever) and tighten screws until lock is firm.

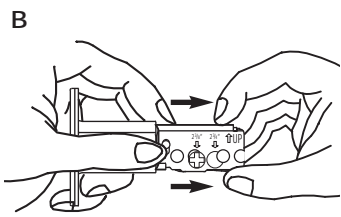
Backset



Backset is the distance from the door edge to the center of the hole on the door face. Master Lock door locks are supplied with an adjustable latch which can fit 2-3/8" (60mm) or 2-3/4" (70mm) backset.

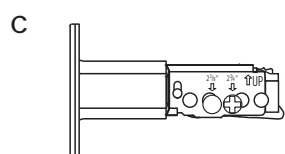


a. Rotate latch crank to retract the latchbolt to the unlock position.

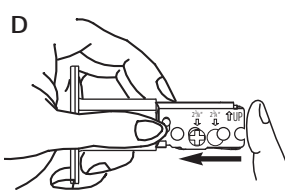


b. Push the change lever up against the top. Hold torque plate and torque spring then pull the extension plate all the way out. Be sure the 2-3/4" (70mm) screw hole is properly aligned and "change lever" jumps down to original position.

b.



c. Your latch is now set for 2-3/4" (70mm) backset.



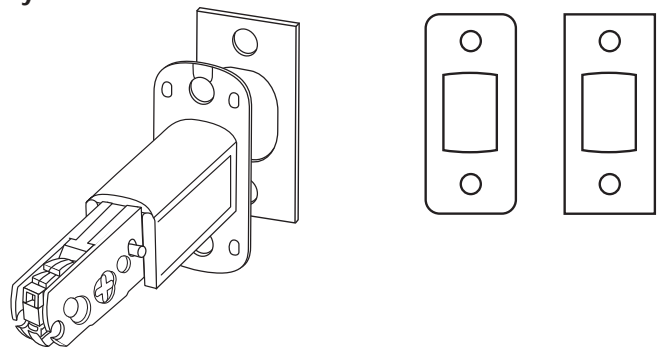
d. Latch may be adjusted back to 2-3/8" (60mm) backset by retracting the latchbolt, pushing up the "change lever" and moving the extension plate back to its original position.

(NOTE: Be sure the 2-3/8" (60mm) screw hole is properly aligned and "change lever" jumps down to original position after alignment.)

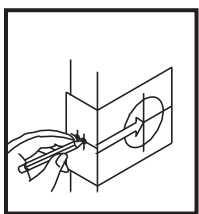
Attach the faceplate that matches the mortise in the edge of your door

To change faceplates:

1. Use a flat screwdriver to separate the faceplate.
2. Snap selected faceplate onto backplate.

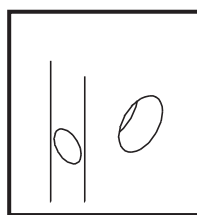


Mark door with template



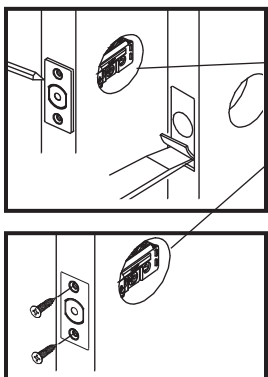
Select 2-3/8" or 2-3/4" (60mm or 70mm) backset as desired and mark center of hole on door face.

Drill holes



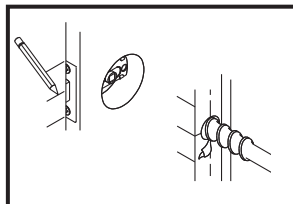
Drill 2-1/8" (54mm) hole on door face from both sides to avoid wood splitting. Drill 1" (25.4mm) hole for latch.

Install latch



Insert latch in hole, mark outline of face plate and chisel 1/64" (4mm) deep.

Insert latch and tighten screws.



Close door to mark horizontal centerline of strike.

Measure one half of door thickness from doorstop and mark for the vertical centerline of strike. Drill 1" hole, 1/2" deep at the intersection of the horizontal and vertical centerlines.

TEMPLATE

Fold on Dotted Line and Fit on Door Edge

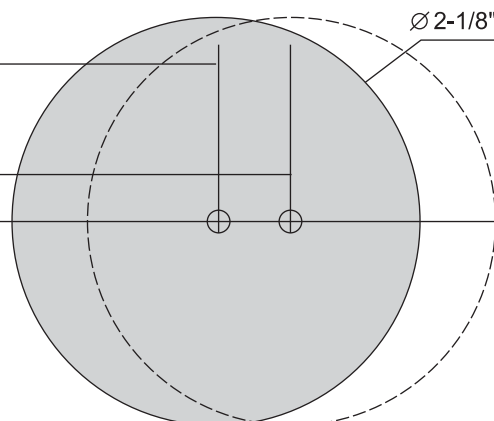
1-3/4" 45mm 1-9/16" 40mm 1-3/8" 35mm

Make 1" Hole at Center of Door Edge

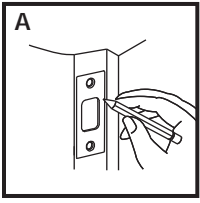
For Backset 2-3/8"

For Backset 2-3/4"

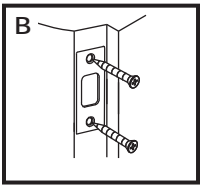
Ø 2-1/8" (54mm)



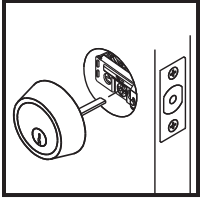
Install strike



- Match screw holes on strike with vertical centerlines on jamb. Mark outline of strike plate and chisel out until strike is flush with jamb. (Approx. 1/8")
- Install strike and tighten screws.

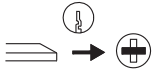


Install exterior mechanism – single cylinder

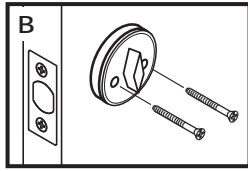
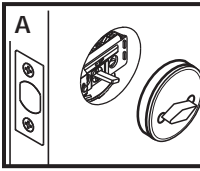


Press cylinder side flush against door making certain the torque blade is properly positioned in latch crank. Tapped holes in housing of exterior cylinder should be lined up with screwholes.

Key hole should be in down position. TORQUE BLADE SHOULD HORIZONTALLY INSERTED INTO LATCH CRANK.

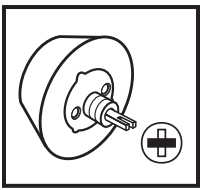


Install interior mechanism – single cylinder



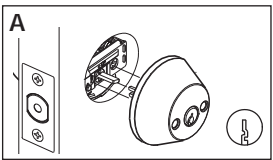
- Slide turnpiece and interior rosette onto torque blade.
- Insert machine screws through holes engaging holes in cylinder and tighten firmly.

Install exterior cylinder – double cylinder



Press exterior cylinder flush against door. Exterior torque blade should be horizontally inserted into latch crank first.

Install interior cylinder – double cylinder



- Press interior assembly flush against door, making certain the torque blade is properly positioned in latch crank. Keyhole should be in down position.
- The interior torque blade is inserted into the exterior hole.
- Insert two screws through countersunk holes engaging holes in exterior cylinder and tighten firmly.

