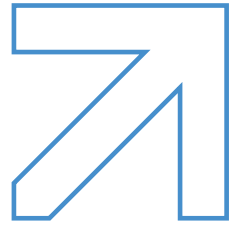




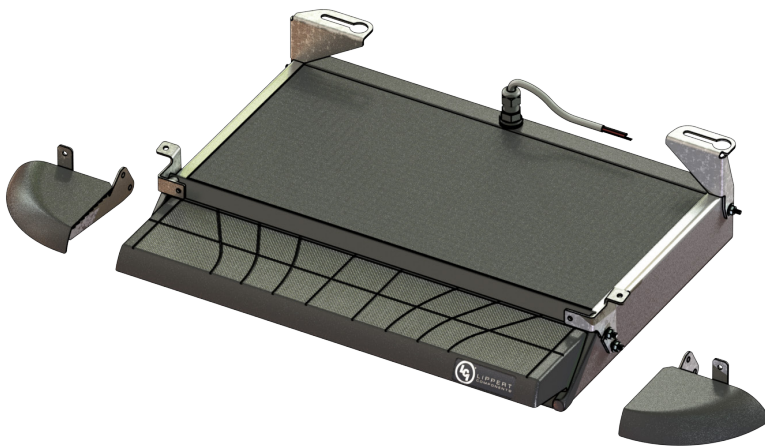
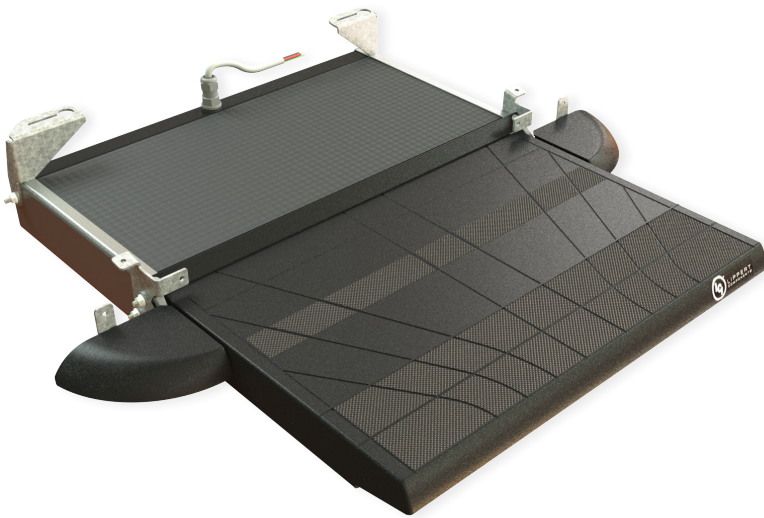
# Steps



# ALANERA NEW!

## Electric

P/N	MM	Kg	Description
10857/550R/96/000	550mm	5,894 kg	Step
10857/550R/96/000/K00	550mm	6,372 kg	Step and fixing system for Ducato
10857/550R/96/000/K01	550mm	6,901 kg	Step, fixing system for Ducato and wings

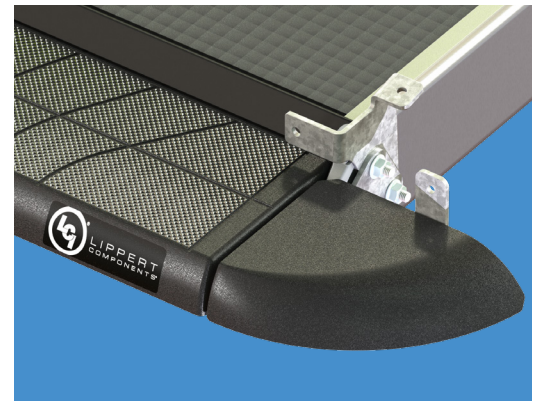


## Quick Facts

- New modern design
- Automotive quality finish
- Lightweight construction
- High tech durable material
- Easy to clean
- Stylish accessories
- Quick installation

## Customizable Logos

Manufacturers can customize the front sticker with their logo: the shape of the tread helps to drain the dirt from the road and weather while keeping the logo clean and visible.



## OEM Quality and Feel

The new Alanera slide-out step series is designed to meet the style of the modern RV with its sleek profile and high-quality finish, combined with improvements in both weight saving and ease of use. The drain channels help keep the tread clean in any weather, while the anti-slip finish provides a good grip with any footwear. The 2 optional wings on the side help integrate the step on the vehicle and can support the weight of a person.

## Coming Soon

- 440 and 700mm versions
- LED strip
- Customizable logo projector

# ALANERA NEW!

## Compact Packaging

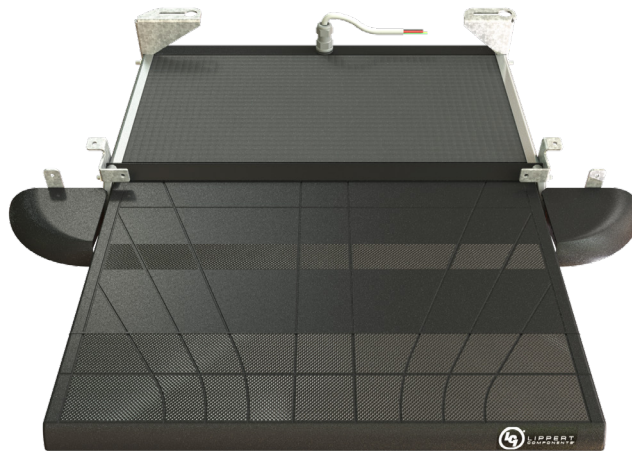
- Compact folding brackets
- No additional assembly
- Reduced installation time

## Lightweight

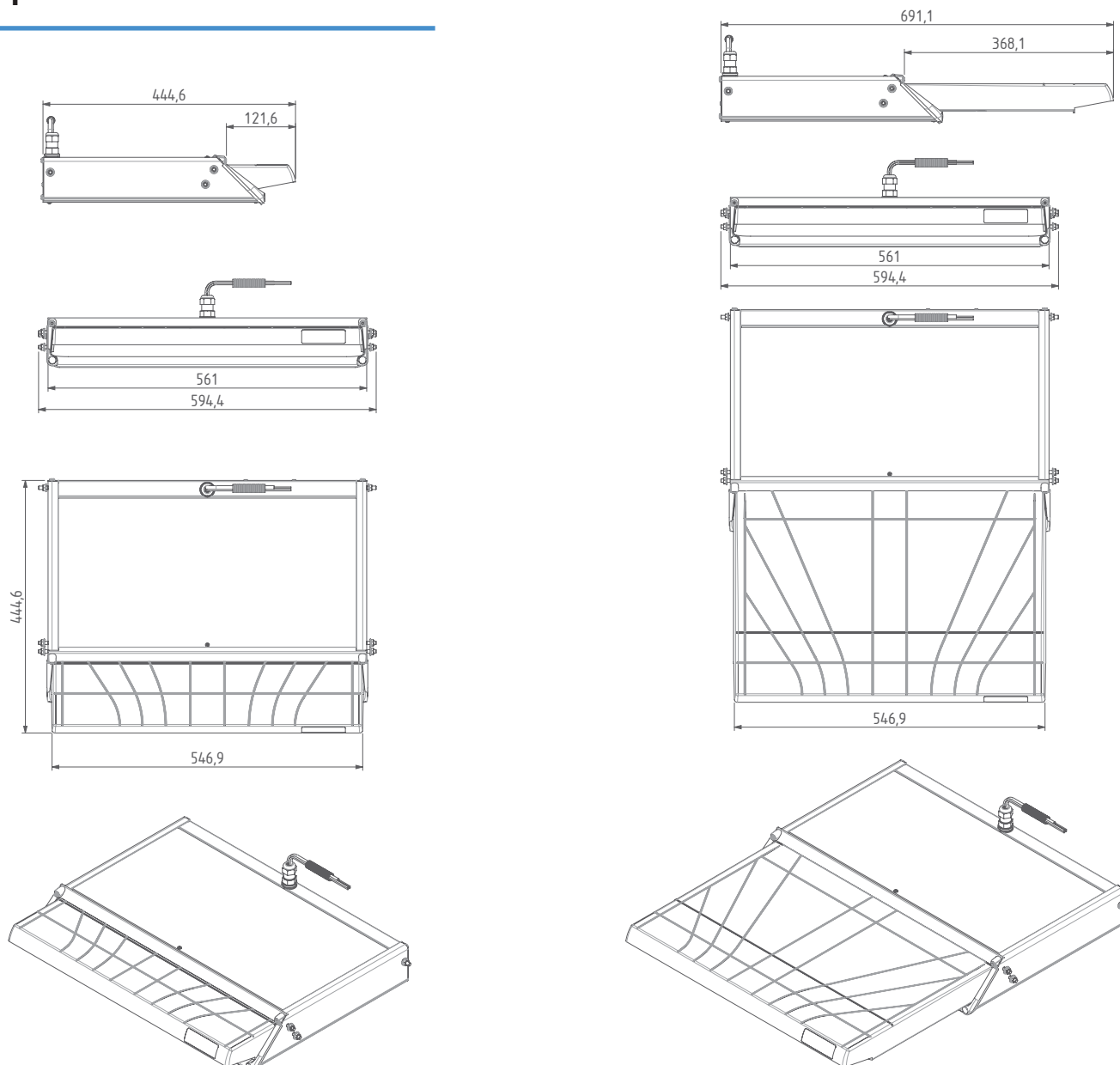
- 6,23Kg / 13,7lbs
- 6,74Kg w/ Ducato Kit
- 7,28Kg w/ kit and wings

## Compatibility

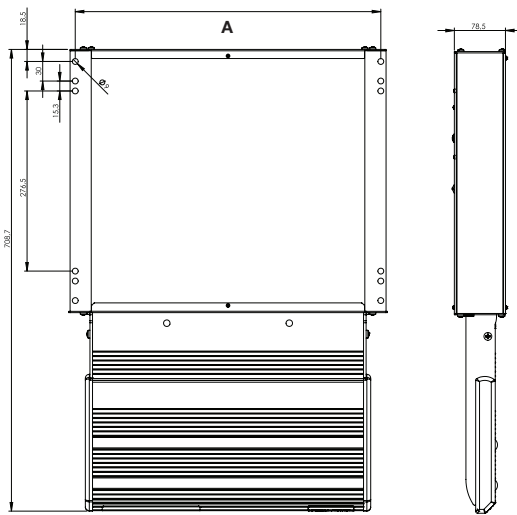
The version shown in these pictures is compatible with the FCA X250 platform (Ducato/ Ram ProMaster). The patented design allows you to hide most of the structure under the chassis and improving both road clearance and distance from the muffler.



## Specifications



# INNOLIGHT SERIES



## Front Cover

P/N
856-223-0-AL00
856-254-0-AL00



## Fitting Kit

P/N	For
856-851-0-ZF00	Fiat Ducato Euro 6 Citroen Jumper Euro 6 Peugeot Boxer Euro 6
856-816-0-ZF00	Mercedes Sprinter
856-871-0-ZF00	Volkswagen Crafter

## Electric

P/N	MM	KG	A
10856/440R/90/000/V4	440mm	6,850 kg	695mm
10856/550R/90/000/V4	550mm	7,300 kg	735mm
10856/700R/90/000/V4	770mm	8,380 kg	785mm
10856/100R/90/000/V3	1000mm	9,778 kg	905mm

## Manual

P/N	MM	KG	A
10856/44RM/90/000/V4	440mm	6,066 kg	695mm
10856/55RM/90/000/V4	550mm	6,700 kg	735mm
10856/70RM/90/000/V4	700mm	7,580 kg	785mm

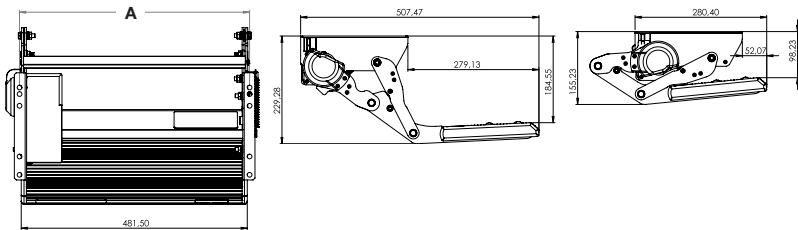
## Innolight Step with slide out motion

- Designed and tested for quality, durability, and resistance to corrosion, this innovative, lightweight system is reliably constructed from 80% plastic and 20% steel and aluminium components
- Slides on special patented guides for a frictionless slide even after a long period where it's not been used
- Waterproof sensor integrated in the motor carter for "open step" warning
- Compact size
- Built to deter stagnate water, the sturdy, anodized aluminium footboard includes anti-slip rubber
- Includes a patented, quick manual release emergency system
- 200 kg maximum load capacity

### For electric version only:

- High Power 12V Engine works on ball bearings with a thermal breaker in case of excessive strain
- High motion speed: from open to close 2,5 seconds
- Average amperage: 2,5 A
- Assembled cable included
- Maximum amperage: 9 A

# R SERIES



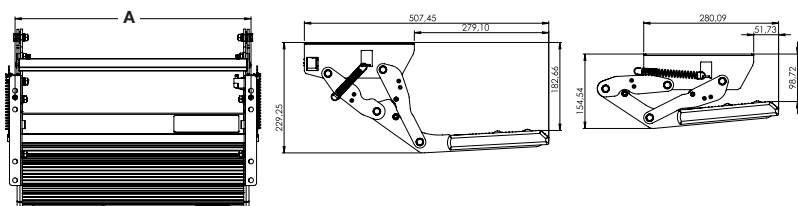
## Electric

P/N	MM	KG	A
10750/440R/96/000	460mm	5,450 kg	490mm
10750/550R/96/000	524mm	5,960 kg	513mm
10750/600R/96/000	695mm	6,740 kg	726mm

## Electric Step with pendulum motion

- New, lightweight aluminium and steel construction designed for increased stability in all conditions
- Strong protection against salty fog of the steel parts through galvanization and epoxy paint, as well as hardware parts
- Built to deter stagnate water, the sturdy, anodized aluminium footboard includes anti-slip rubber
- Waterproof sensor integrated in the motor carter for "open step" warning
- Quick movement on brass bushes deliver smooth operation over time
- High Power Engine works on ball bearings with a thermal breaker in case of excessive strain
- Anti-shock clutch preserves the motor and the gearbox from violent hits while the step is in motion
- Opens and closes with manual operation until completely closed/opened
- Includes a patented, quick manual release emergency system
- Assembled cable included
- High motion speed: from open to close 1,5 seconds
- Average amperage: 3 A
- 200 kg maximum load capacity

# R SERIES



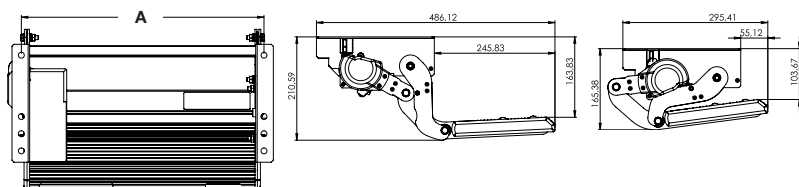
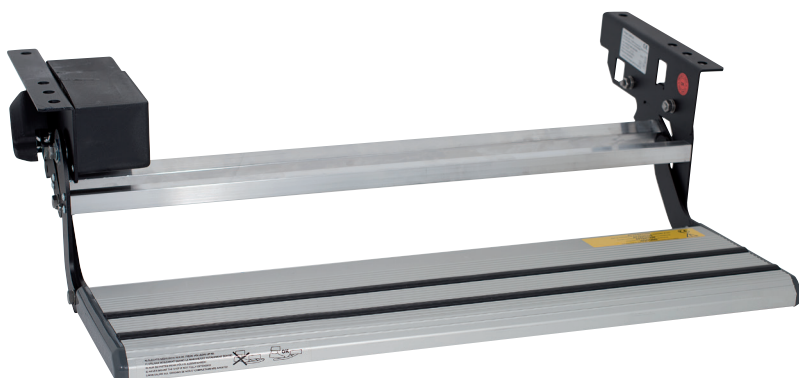
## Manual

P/N	MM	KG	A
12473/350R/96/000	350mm	3,690 kg	359mm
12473/440R/96/000	440mm	4,120 kg	490mm
12473/550R/96/000	550mm	4,630 kg	532mm
12473/600R/96/000	600mm	4,320 kg	605mm
12473/700R/96/000	700mm	4,700 kg	725mm

## Manual Step with pendulum motion

- New, lightweight aluminium and steel construction designed for increased stability in all conditions
- Strong protection against salty fog of the steel parts through galvanization and epoxy paint, as well as hardware parts
- Built to deter stagnate water, the sturdy, anodized aluminium footboard includes anti-slip rubber
- Waterproof sensor integrated in the motor carter for "open step" warning
- Quick movement on brass bushes deliver smooth operation over time
- 200 kg maximum load capacity

# T SERIES



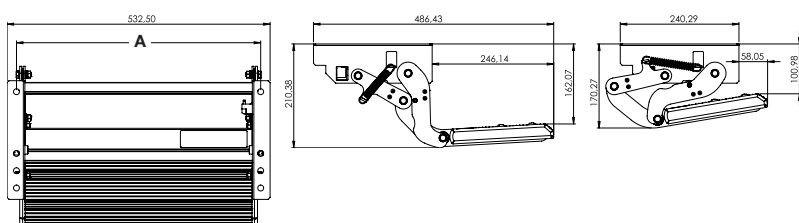
## Electric

P/N	mm	kg	A
10750/440T/96/000	460mm	5,510 kg	495mm
10750/500T/96/000	475mm	5,840 kg	530mm
10750/600T/96/000	596mm	5,740 kg	609mm
10750/700T/96/000	719mm	6,190 kg	730mm

## Electric Step with pendulum motion

- New, lightweight aluminium and steel construction designed for increased stability in all conditions
- Strong protection against salty fog of the steel parts through galvanization and epoxy paint, as well as hardware parts
- Built to deter stagnate water, the sturdy, anodized aluminium footboard includes anti-slip rubber
- Waterproof sensor integrated in the motor carter for "open step" warning
- Quick movement on brass bushes deliver smooth operation over time
- High Power Engine works on ball bearings with a thermal breaker in case of excessive strain
- Anti-shock clutch preserves the motor and the gearbox from violent hits while the step is in motion
- Opens and closes with manual operation until completely closed/opened
- Includes a patented, quick manual release emergency system
- Assembled cable included
- High motion speed: from open to close 1,5 seconds
- Average amperage: 3 A
- 200 kg maximum load capacity

# T SERIES



## Manual

P/N	mm	kg	A
12473/350T/96/000	350mm	3,640 kg	364mm
12473/440T/96/000	440mm	4,000 kg	495mm
12473/500T/96/000	500mm	4,100 kg	530mm
12473/700T/96/000	700mm	4,700 kg	730mm

## Manual Step with pendulum motion

- New, lightweight aluminium and steel construction designed for increased stability in all conditions
- Strong protection against salty fog of the steel parts through galvanization and epoxy paint, as well as hardware parts
- Built to deter stagnate water, the sturdy, anodized aluminium footboard includes anti-slip rubber
- Waterproof sensor integrated in the motor carter for "open step" warning
- Quick movement on brass bushes deliver smooth operation over time
- 200 kg maximum load capacity

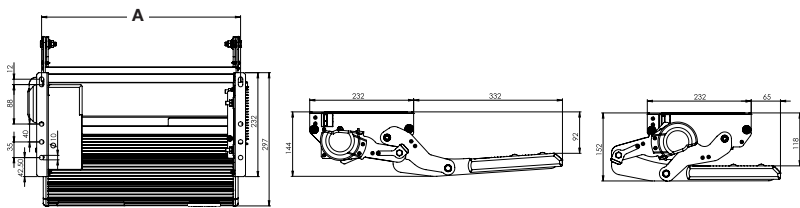
# S SERIES

## Electric

P/N	MM	KG	A
10750/440S/96/000	460mm	5,450 kg	442mm
10750/500S/96/000	524mm	5,960 kg	567mm
10750/700S/96/000	695mm	6,740 kg	707mm

## Electric Step with pendulum motion

- New, lightweight aluminium and steel construction designed for increased stability in all conditions
- Strong protection against salty fog of the steel parts through galvanization and epoxy paint, as well as hardware parts
- Built to deter stagnate water, the sturdy, anodized aluminium footboard includes anti-slip rubber
- Waterproof sensor integrated in the motor carter for "open step" warning
- Quick movement on brass bushes deliver smooth operation over time
- High Power Engine works on ball bearings with a thermal breaker in case of excessive strain
- Anti-shock clutch preserves the motor and the gearbox from violent hits while the step is in motion
- Opens and closes with manual operation until completely closed/opened
- Includes a patented, quick manual release emergency system
- Assembled cable included
- High motion speed: from open to close 1,5 seconds
- Average amperage: 3 A
- 200 kg maximum load capacity



# L SERIES

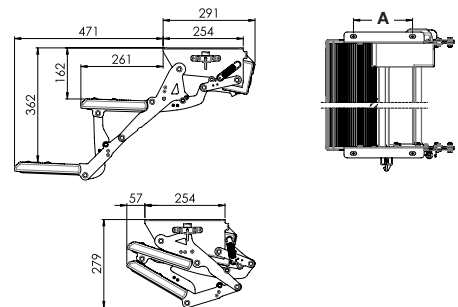


## Electric

P/N	MM	Kg
10752/610L/96/000	610mm	11 kg
10752/660L/96/000	660mm	12 kg

## Retractable Electric Step

- Lightweight structure
- Anti-slip, anodized aluminium footboard
- Galvanized and painted steel structure
- Opens and closes automatically
- Emergency manual release system
- Left or right motor option
- Warning light for "open step" sensor



# L SERIES

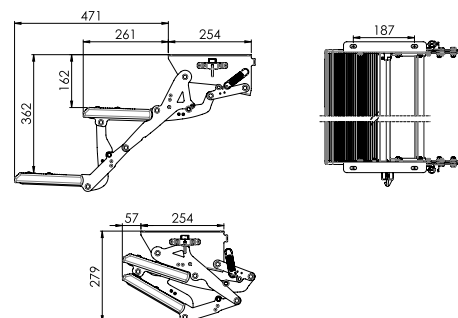


## Manual

P/N
10753/61LD/96/000

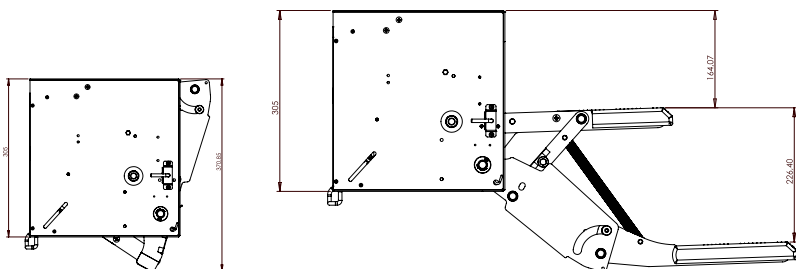
## Retractable Manual Step

- Lightweight structure
- Anti-slip, anodized aluminium footboard
- Galvanized and painted steel structure
- Opens and closes manually
- Includes additional locking system
- Warning light for "open step" sensor





# Z SERIES



## Electronic

P/N	mm	kg
10574/48FD/96/000	480mm	16,90 kg
10574/48FS/96/000	480mm	16,90 kg
10574/53FD/96/000	530mm	17,40 kg
10574/53FS/96/000	530mm	17,40 kg
10574/65FD/96/000	650mm	18,40 kg
10574/65FS/96/000	650mm	18,40 kg

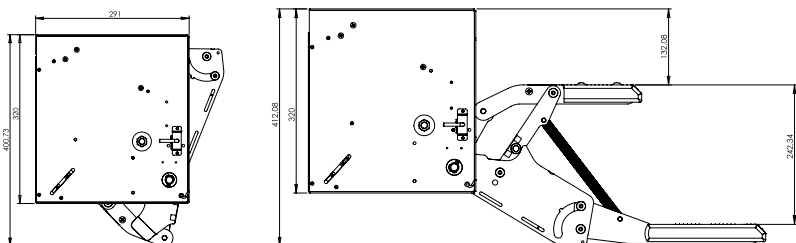
## Electronic

P/N	mm	kg
10574/48GD/96/000	480mm	19,50 kg
10574/48GS/96/000	480mm	19,50 kg
10574/53GD/96/000	530mm	20,20 kg
10574/53GS/96/000	530mm	20,20 kg

## Retractable Electric Step

- Anti-slip, anodized aluminium footboard
- Galvanized and painted steel structure
- Opens and closes automatically
- Emergency manual release system
- Automatically closes when engine starts
- Gear motor on ball bearings
- Gear motor protection system in case of excessive stress
- Left or right motor option
- Warning light for "open step" sensor
- Multifunction electronic control unit for total control of all step functions
- Average amperage: 3 A
- 200 kg maximum loading capacity

# Z SERIES



## Electronic

P/N	mm	kg
10577/44AD/96/000	440mm	15,60 kg
10577/44AS/96/000	440mm	15,60 kg
10577/65AD/96/000	662mm	19,30 kg
10577/65AS/96/000	662mm	19,30 kg

## Retractable Electric Step

- Anti-slip, anodized aluminium footboard
- Galvanized and painted steel structure
- Opens and closes automatically
- Emergency manual release system
- Automatically closes when engine starts
- Gear motor on ball bearings
- Gear motor protection system in case of excessive stress
- Left or right motor option
- Warning light for "open step" sensor
- Multifunction electronic control unit for total control of all step functions
- Average amperage: 3 A
- 200 kg maximum loading capacity

# U SERIES

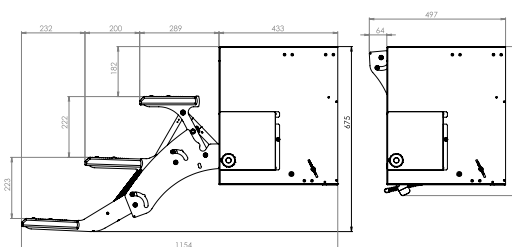


## Electronic

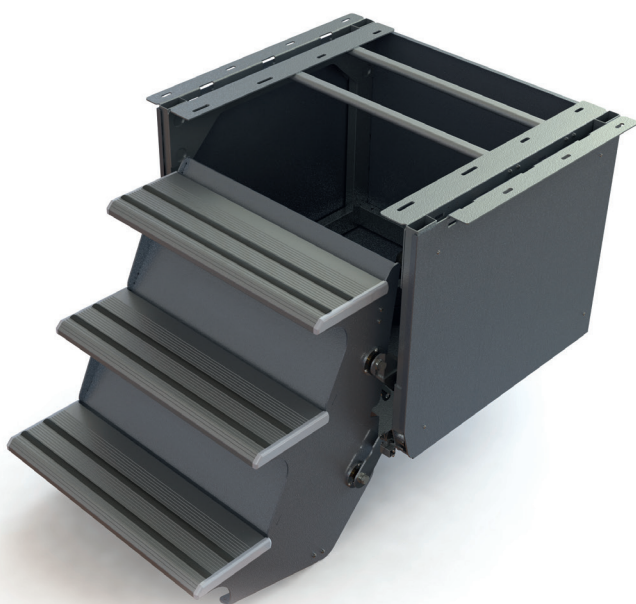
P/N	mm	kg
10576/53AD/96/000	527mm	29,00 kg
10576/53AS/96/000	527mm	29,00 kg
10576/65AD/96/000	645mm	33,00 kg
10576/65AS/96/000	645mm	33,00 kg

## Electric Step: retracts under vehicle

- Anti-slip, anodized aluminium footboard
- Galvanized and painted steel structure
- Gear motor on ball bearings
- Emergency manual release system
- Left or right motor option
- Multifunction electronic control unit for total control of all step functions
- Average amperage: 5 A
- 200 kg maximum loading capacity



# U SERIES

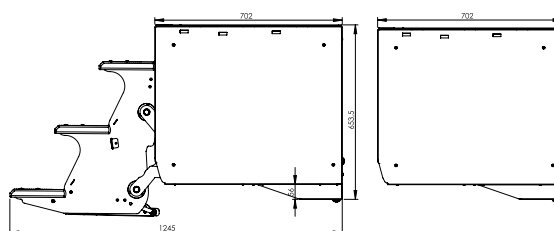


## Electronic

P/N	mm	kg
10576/6400/96/000	640mm	72,87 kg

## Electric Step: retracts under vehicle

- Anti-sli, anodized aluminium footboard
- Galvanized and painted steel structure
- Gear motor on ball bearings
- Emergency manual release system
- Left or right motor option
- Multifunction electronic control unit for total control of all step functions
- Average amperage: 5 A
- 200 kg maximum loading capacity



# STEP ACCESSORIES

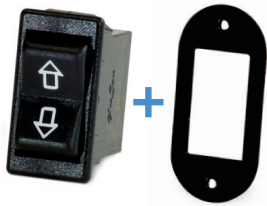


## Version 1

P/N

479497

425638



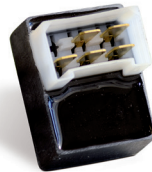
## w with oval cover

(cover only has P/N 425638) for electric steps

## Version 2

P/N

12531



## Automatic Storing Device

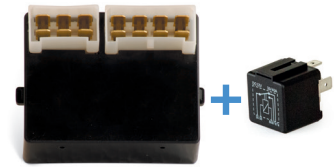
Very easy to install, this device enables automatic storing for electric steps when starting the vehicle's engine and inhibits opening when driving.

## Version 3 + 4

P/N

12542

12539 for Version 4



## Multifunction electronic control unit

Makes system completely automatic. When ordering, please specify the step number to which the ECU must be connected.

Version 4: By adding the relay 12539, we offer the synchronization of the step with the door.

P/N

479495



## Wire Connection Kit (simplifies installation)

Includes: long cable to connect the existing wiring to the electronic control box; start switch; LED warning light; 15amps fuse-holder; connection scheme.

P/N

12611



## LED Lighting Kit: for steps with Alu footboard

- 1 blue LED strip
- 1 anti-slip see-through rubber profile
- 1 timer

Optional for steps manufactured from February 2010. For all steps manufactured before this term, it is necessary to replace the whole footboard

P/N

856-093-1-ZF00 for 10856 Series Only



## Handle: for manual step extension/retraction



Learn more about RV steps and ladders on our website.