



BILLIARD CATALOG

DESIGNED FOR FUN. CRAFTED FOR LIFE.



SERVING THE BILLIARD INDUSTRY FOR OVER 60 YEARS

HISTORY

Imperial is a family owned business started in 1955 to serve the leisure home market. Since then, we have grown into the largest billiard and game room distributor in the US. Our products are of the highest quality and we offer an expansive line of complimentary billiard accessories, games, furniture and licensed merchandise.

Stylish, fun and versatile our products are crafted from top grades of lumber found in trees throughout North America including the Maple, Ash and Douglas Fir. Most of our pool tables are carved from solid wood and guaranteed for life.

Each table can be customized to suit individual taste and preference without sacrificing the cuts needed to play an excellent game. Choose from a variety of cloth colors to match the décor of your home. Dining tops are standard or available with many models for your entertainment pleasure.

We take pride in offering sturdy and beautiful sporting equipment that is functional, fun and designed for the perfect game.

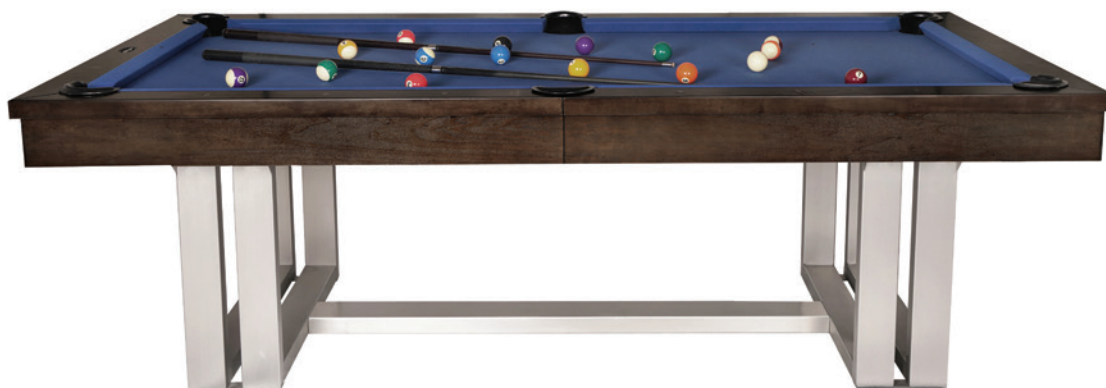




WAREHOUSE

Imperial is moving our warehouse. After decades in New Jersey and California, Imperial will be consolidating both locations into a large facility in Irving, Texas. We have found an incredible new building that is going to allow us to ship faster and more economically than ever before. It will also allow us plenty of room to grow. The plan is to have all of our Billiard products shipping from this new facility before the beginning of the August.

NEW
TABLES



THE DAUPHINE

AVAILABLE SIZES:
8 ft. 0029-2920281

FINISH:
NEW Raven

DIMENSIONS:
Overall outside dimension: 101”L x 57”W x 32”H

THE TRILLIUM

AVAILABLE SIZES:
8 ft. 0029-2920283

FINISH:
NEW Charcoal

DIMENSIONS:
Overall outside dimension: 101”L x 57”W x 32”H

THE DRUMMOND

AVAILABLE SIZES:
8 ft. 0029-2920282

FINISH:
Weathered Dark Chestnut

DIMENSIONS:
Overall outside dimension: 101”L x 57”W x 32”H

NEW TABLE FINISHES

In 2018 we will be updating the Weathered Oak finish name to Desert Chestnut. Simultaneously, we are phasing out the Desert Chestnut tables and replacing them with a finish called **Silver Mist**. The Silver Mist finish will still have the weathered look and feel but will be the gray color that many have been asking for.

We are also introducing two other finishes this year: **Charcoal** and **Raven**. Charcoal is a modern finish that will be offered on our higher end Penelope and Trillium tables as well as our entry price point Washington table. The Raven is darker stain over solid oak. It is exclusive to the new Dauphine table. Please be aware that finishes pictured in this catalog may vary slightly from the actual product due to the nature of the wood and the printing process.



Raven



Charcoal

Silver Mist

THE PENELOPE

AVAILABLE SIZE & FINISHES

7ft. Espresso 0029-2920297

8ft. Espresso 0029-2920298

NEW 7ft. Charcoal 0029-2920397

NEW 8ft. Charcoal 0029-2920398

DIMENSIONS:

92”L x 52”W x 32”H & 101”L x 57”W x 32”H

Distance from floor to the bottom panel is 24-1/2”

DINING TOP INCLUDED | BENCHES SOLD SEPARATELY
FEATURED CLOTH: OLIVE



THE PENELOPE
76" STORAGE BENCH

76"L x 17"W x 19"H
Espresso 26-15298 | Charcoal 26-13398



THE PENELOPE
36" BENCH

36"L x 17"W x 19"H
Espresso 26-16298 | Charcoal 26-14398



THE PENELOPE
DELUXE WALL RACK

35.5"L x 58"H x 4.5"W
Espresso 19-169 | Charcoal 19-172



THE PENELOPE SHUFFLEBOARD

AVAILABLE SIZE & FINISHES:

9ft. Espresso 0026-12297

12ft. Espresso 0026-12298

NEW 9ft Charcoal 0026-0397

NEW 12ft Charcoal 0026-0398

DIMENSIONS: 108"L x 28"W x 32"H & 145"L x 33"W x 32"H

DINING TOP INCLUDED



FINISH: Charcoal



THE
BARNSTABLE

AVAILABLE SIZE & FINISHES:

7ft. Desert Chestnut 0029-29202127

8ft. Desert Chestnut 0029-29202128

NEW 7ft. Silver Mist 0029-29202147

NEW 8ft. Silver Mist 0029-29202148

DIMENSIONS:

92"L x 52"W x 32"H & 101"L x 57"W x 32"H

DINING TOP INCLUDED
FEATURED CLOTH: EURO BLUE

THE BARNSTABLE SHUFFLEBOARD

AVAILABLE SIZE & FINISHES:

NEW 12ft. Silver Mist 0026-028

12ft. Desert Chestnut 0026-029

DIMENSIONS: 145"L x 33"W x 32"H





THE 36" BENCH
 36"L x 17"W x 19"H
 Desert Chestnut 26-14118 | Silver Mist 26-15118



THE 76" STORAGE BENCH
 76"L x 17"W x 19"H
 Desert Chestnut 26-13118 | Silver Mist 26-16118



THE DELUXE WALL RACK
 35.5"L x 58"H x 4.5"W
 Desert Chestnut 19-165 | Silver Mist 19-170



THE RENO

AVAILABLE SIZES & FINISHES

7ft. Weathered Dark Chestnut 0029-2920277

8ft. Weathered Dark Chestnut 0029-2920278

DIMENSIONS:

92"L x 52"W x 32"H & 101"L x 57"W x 32"H

7' RENO DINING TOP AVAILABLE: 26-277

8' RENO DINING TOP AVAILABLE: 26-1278

FEATURED CLOTH: KHAKI



THE WEATHERED DARK CHESTNUT 36" BENCH

36"L x 17"W x 19"H
26-14278



THE WEATHERED DARK CHESTNUT 76" STORAGE BENCH

76"L x 17"W x 19"H
26-13278



BOTH BENCHES WORK WITH THE 7FT. AND 8FT. MODELS



THE WEATHERED DARK CHESTNUT
DELUXE WALL RACK

35.5"L x 58"H x 4.5"W
19-160



THE RENO SHUFFLEBOARD

AVAILABLE SIZES & FINISHES:

9ft. Weathered Dark Chestnut 0026-020

12ft. Weathered Dark Chestnut 0026-018

9ft. Antique Walnut 0026-281

DIMENSIONS: 108"L x 28"W x 32"H & 145"L x 33"W x 32" H



THE BEDFORD

AVAILABLE SIZES & FINISHES:
 7ft. Desert Chestnut 0029-29202117
 8 ft. Desert Chestnut 0029-29202118
NEW 7ft. Silver Mist 0029-29202157
NEW 8 ft. Silver Mist 0029-29202158

DIMENSIONS:
 92”L x 52”W x 32”H & 101”L x 57”W x 32”H

DINING TOP INCLUDED
 FEATURED CLOTH: NAVY



THE SILVER MIST
 76” STORAGE BENCH
 76”L x 17”W x 19”H
 Desert Chestnut 26-13118
 Silver Mist 26-16118



THE SILVER MIST
 36” BENCH
 36”L x 17”W x 19”H
 Desert Chestnut 26-14118
 Silver Mist 26-15118



THE BEDFORD
 SHUFFLEBOARD

AVAILABLE SIZE & FINISHES:
 9ft. Desert Chestnut 0026-020
 12ft. Desert Chestnut 0026-018
 9ft. Silver Mist 0026-030
 12ft. Silver Mist 0026-028

DIMENSIONS: 108”L x 28”W x 32” H & 145”L x 33” W x 32”H

ALL BENCHES WORK WITH THE 7FT AND 8FT MODELS



THE CHATHAM

AVAILABLE SIZES & FINISHES:

8 ft. Desert Chestnut 0029-29202138

NEW 8 ft. Silver Mist 0026-29202168

DIMENSIONS:

101" L x 57" W x 32" H



THE DELUXE WALL RACK

35.5" L x 58" H x 4.5" W

Desert Chestnut 19-165

Silver Mist 19-170



THE TRURO

AVAILABLE SIZE:
8ft. 0029-2920178

FINISH:
Two Tone Antique Walnut & Black

DIMENSIONS:
101"L x 57"W x 32"H



THE BUCHANAN

AVAILABLE SIZES:
8 ft. 0029-8263CR

FINISH:
Two Tone Antique Walnut & Black

DIMENSIONS:
100"L x 57"W x 32"H



8FT. ANTIQUE WALNUT DINING TOP AVAILABLE: 26-700
8FT. BLACK DINING TOP AVAILABLE: 26-508



THE WASHINGTON

AVAILABLE SIZES & FINISHES:

7ft. Antique Walnut 0029-7231CR

8ft. Antique Walnut 0029-8231CR

NEW 7ft. Charcoal 0029-292066

NEW 8ft. Charcoal 0029-292067

DIMENSIONS:

90”L x 52”W x 32”H & 100”L x 57”W x 32”H

7FT. ANTIQUE WALNUT DINING TOP AVAILABLE: 26-725

8FT. ANTIQUE WALNUT DINING TOP AVAILABLE: 26-700

THE LINCOLN

AVAILABLE SIZES & FINISHES:

7ft. Mahogany 0029-7123CR

8ft. Mahogany 0029-8223CR

7ft. Antique Walnut 0029-7133CR

8ft. Antique Walnut 0029-8233CR

DIMENSIONS:

90”L x 52”W x 32”H & 100”L x 57”W x 32”H

7FT. ANTIQUE WALNUT DINING TOP AVAILABLE: 26-725

8FT. ANTIQUE WALNUT DINING TOP AVAILABLE: 26-700

8FT. MAHOGANY DINING TOP AVAILABLE: 26-200



THE SHADOW

AVAILABLE SIZES:

7ft. 0029-29507 | 8ft. 0029-8251CR

FINISH:

Black

DIMENSIONS:

89”L x 51”W x 32”H & 101”L x 55”W x 32”H

7FT. BLACK DINING TOP AVAILABLE: 26-500

8FT. BLACK DINING TOP AVAILABLE: 26-508



ACCESSORY KITS



THE GOLD BILLIARD KIT

FINISHES:

- Mahogany 24-3050
- Antique Walnut 24-3051
- Black 24-3052
- Weathered Dark Chestnut 24-3053
- Desert Chestnut 24-3054
- Silver Mist 24-3055
- Charcoal 24-3056

BALLS NOT INCLUDED
CONTENTS AVAILABLE SEPARATELY



THE SILVER BILLIARD KIT

FINISHES:

- Black 24-2052
- Mahogany 24-2050
- Antique Walnut 24-2051

BALLS NOT INCLUDED
CONTENTS AVAILABLE SEPARATELY

THE RAMSEY

AVAILABLE SIZE:
8 ft. 0029-291508

FINISH:
Antique Walnut

DIMENSIONS:
100"L x 55"W x 32"H

8FT. ANTIQUE WALNUT DINING TOP AVAILABLE: 26-700



Storage Drawer

THE RASSON VICTORY II PLUS

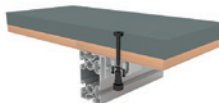
AVAILABLE SIZES:
8ft. 0029-851 | 9ft. 0029-950

FINISH:
Black

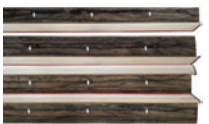
DIMENSIONS:
104”L x 59”W & 114”L x 64”W



30 mm Pro Slate - 9ft. table is comprised of precision cut 30mm (1.18”) thick 3pc premium RASSON slate.



Slate Leveling System - Patent pending “LevelBox” allows for micro adjustments across 22 key locations for precise installation.



Rail - Unique processing compresses phenolic resin into hardwood veneers, for a ultra durable finish.



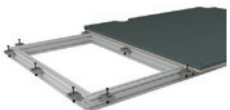
Leg Leveling System - Level the frame by rotating the pedestal screw adjusts the distance between the pedestal and the leg.



Cushion - Artemis offers durability and precision for consistent response and longevity.



Pockets - Made from Thermo Plastic Elastomers to eliminate scuffing, reduce ball rejection and dampen impact noise with patent pending T-shape slot device.



Aluminum Alloy Support Beam - Superior stability and precision with a climate consistent foundation.



Cloth - Default color is Simonis 860 Tournament Blue. Other Simonis colors available upon request.

THE RASSON
PRO CHALLENGER
(Special Order Only)

AVAILABLE SIZES:
8ft 0029-871 | 9ft. 0029-970

FINISH:
Walnut

DIMENSIONS:
104"Lx 59"W & 114"Lx 64"W



THE RASSON
PRO INNOVATOR
(Special Order Only)

AVAILABLE SIZES:
7ft 0029-760
8ft 0029-861
9ft. 0029-960

FINISH:
Black

DIMENSIONS:
94"Lx 54"W & 104"Lx 59"W & 114"Lx 64"W



THE SHARP SHOOTER



AVAILABLE SIZES:
8 ft. *29-820

FINISH:
Black

DIMENSIONS:
100"L x 56"W x 32"H

THE ELIMINATOR

AVAILABLE SIZE:
7ft. *29-752K | 8 ft. *29-852K

FINISH:
Black Laminate

DIMENSIONS:
102"L x 58"W x 32"H



THE NON-SLATE

AVAILABLE SIZE:
6.5ft. 29-650

FINISH:
Black Laminate

DIMENSIONS:
88"L x 49.5"W x 7"H



Folding Legs
Assembled Weight 198lbs
Drop Pockets
Accessories Included

THE SPECTRUM

AVAILABLE SIZES:

8 ft. 0029-880K

FINISH:

Black Laminate with Chrome Legs and Rail Trim

DIMENSIONS:

Overall outside dimension: 103"L x 29"W x 32"H

THE ECONOMY ACCESSORY KIT



DINING TOPS

Imperial has dedicated itself to bringing beautiful and modern designs to the game of billiards. We believe the game of billiards can bring families and friends together in main living spaces. That is why we have developed a line of multi-functional tables which, with the addition of one of our dining tops, can also be used as a dinner table.

7FT. ANTIQUE WALNUT DINING TOP: 26-725

8FT. ANTIQUE WALNUT DINING TOP: 26-700

8FT. MAHOGANY DINING TOP: 26-200

7FT. BLACK DINING TOP: 26-500

8FT. BLACK DINING TOP: 26-508

7FT. WEATHERED DARK CHESTNUT DINING TOP: 26-277

8FT. WEATHERED DARK CHESTNUT DINING TOP: 26-1278



GAME ACCESSORIES

THE ROMAN 6 CUE WALL RACK

DIMENSIONS: 20"L x 3"W x 3"H

THE ROMAN 8 CUE WALL RACK

DIMENSIONS: 20"L x 3"W x 3"H



19-131
Black



19-219
Mahogany



19-345
Antique Walnut



19-127
Black



19-222
Mahogany



19-346
Antique Walnut

THE 7 CUE BRIDGE STICK 2 PIECE WALL RACK



19-126
Black



19-225
Mahogany



19-347
Antique Walnut



19-357
Charcoal



19-349
Weathered
Dark Chestnut



19-355
Silver Mist



19-356
Desert Chestnut

THE 6 CUE METAL FLOOR RACK



19-177
Black

THE CUE & BALL FLOOR STAND



19-125
Black



19-123
Mahogany



19-124
Antique Walnut



Desert Chestnut



Weathered Dark Chestnut



Silver Mist

THE DELUXE WALL RACK

FINISHES:

- Weathered Dark Chestnut 19-160
- Antique Walnut 19-164
- Desert Chestnut 19-165
- Mahogany 19-166
- Black 19-168
- Espresso 19-169
- Sliver Mist 19-170
- Charcoal 19-172

DIMENSIONS: 35.5”L x 58”H x 4.5”W



Black



Mahogany



Espresso



Charcoal



Antique Walnut



THE DOUBLE THICK CORNER RACK

FINISHES:

- Black 19-311
- Mahogany 19-313
- Antique Walnut 19-314
- Weathered Dark Chestnut 19-315
- Sliver Mist 19-316
- Espresso 19-317

DIMENSIONS: 15”L x 15”W x 28”H





Silver Mist Deluxe Wall Rack
19-170

THE NAUGAHYDE FITTED COVER

FINISHES: Black, Mahogany, Brown
 DIMENSIONS: 90”L x 51”W x 7”H | 100”L x 56”W x 8”H | 112”L x 62”W x 9”H



18-7-BLK (7ft.)
 18-8-BLK (8ft.)
 18-9-BLK (9ft.)

18-7-MAHG (7ft.)
 18-8-MAHG (8ft.)

18-7-BRN (7ft.)
 18-8-BRN (8ft.)
 18-9-BRN (9ft.)

18-220 (Oversized 7ft Cover for Interior
 Pocket Tables 92”L x 53”W x 8”H)

18-221 (Oversized 8ft Cover for Interior
 Pocket Tables 58”L x 102”W x 8”H)

THE DUST COVER

AVAILABLE SIZES: 7ft. , 8ft. & 9ft .



18-148BLK (8ft.)
 18-149BLK (9ft.)

18-148BRN (8ft.)
 18-149BRN (9ft.)

18-148GRN (8ft.)

18-148CLR (8ft.)



Black Triangle
18-422



Black 9 Ball Rack
18-423



Mahogany
Triangle
18-430



Mahogany
9 Ball Rack
18-431



Antique Walnut
Triangle
18-479



Antique Walnut
9 Ball Rack
18-480

THE BULL NOSE TRIANGLE

*Accessory found in the Gold Kit



18-483
Black



18-208
Mahogany



18-481
Antique Walnut



18-487
Weathered
Dark Chestnut



18-489
Desert
Chestnut



18-490
Silver Mist



18-491
Charcoal

THE BULL NOSE NINE BALL RACK

*Accessory found in the Gold Kit



18-484
Black



18-204
Mahogany



18-482
Antique Walnut



18-485
Weathered
Dark Chestnut



18-486
Desert
Chestnut



18-492
Silver Mist



18-493
Charcoal

THE 10 1/2" HORSEHAIR BRUSH

*Accessory found in the Gold Kit



18-207
Black



18-193
Mahogany



18-192
Antique Walnut



18-206
Weathered
Dark Chestnut



18-211
Desert
Chestnut



18-215
Silver Mist



18-212
Charcoal

IMPERIAL CLOTH

THE LEISURE FABRIC

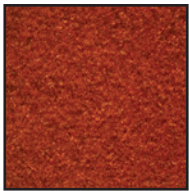
The Leisure fabric is the best value in the industry. With a 75/25 blend it is a great weight (19/20oz) for the commercial environment and the family table. All Leisure cloth is bathed in a stain resistant solution to ensure years of stain free play.

THE PREMIER FABRIC

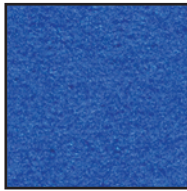
The Premier fabric is for the discerning player. At 22oz with a 75/25 blend and a finishing process that is second to none, it is one of the finest cloths available. All Premier cloth is bathed in a stain resistant solution to ensure years of stain free play.

THE ELIMINATOR FABRIC

The Eliminator fabric is 20/21oz with a 70/30 blend of wool and nylon which gives that traditional tournament fast roll without the high costs. Stain and water resistant with one of the tightest weaves available, there is no cloth better for a serious player.



Rust
Leisure: 14-865-TFL



Euro Blue
Leisure: 14-859-TFL
Premier: 14-159



Gold
Leisure: 14-860-TFL
Premier: 14-160



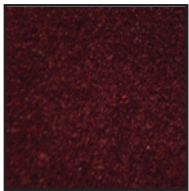
Bankers Grey
Leisure: 14-869-TFL
Premier: 14-169



Khaki
Leisure: 14-892-TFL
Premier: 14-192



Taupe
Premier: 14-179



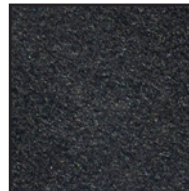
Wine
Leisure: 14-878-TFL
Premier: 14-178



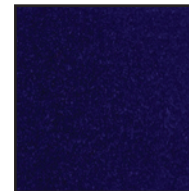
Brown
Leisure: 14-889-TFL



Camel
Leisure: 14-862-TFL
Premier: 14-162



Charcoal
Leisure: 14-863-TFL
Premier: 14-163



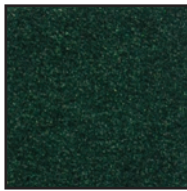
Purple
Leisure: 14-864-TFL
Premier: 14-164



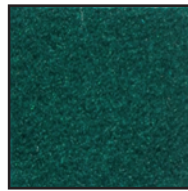
Orange
Leisure: 14-891-TFL



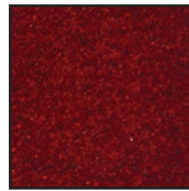
Blue
Leisure: 14-874-TFL



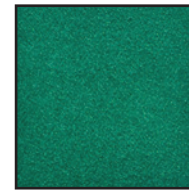
Spruce
Leisure: 14-875-TFL
Premier: 14-175



Dark Green
Leisure: 14-870-TFL
Premier: 14-170



Burgundy
Leisure: 14-873-TFL
Premier: 14-173



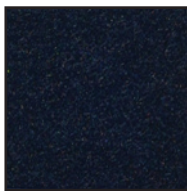
Tournament Green
Leisure: 14-858-TFL
Premier: 14-158
Eliminator: 14-271



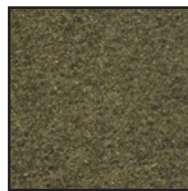
Pewter
Leisure: 14-866-TFL



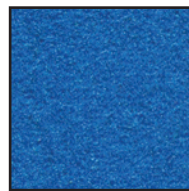
Cadet Blue
Leisure: 14-877-TFL
Premier: 14-177



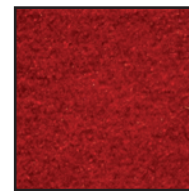
Navy
Leisure: 14-882-TFL
Premier: 14-182



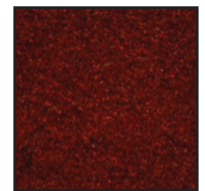
Olive
Leisure: 14-887-TFL
Premier: 14-187



Electric Blue
Leisure: 14-883-TFL
Premier: 14-183



Red
Leisure: 14-872-TFL
Premier: 14-172



Mahogany
Leisure: 14-884-TFL
Premier: 14-184



Black
Leisure: 14-881-TFL
Premier: 14-181



Std Green
Leisure: 14-871-TFL
Premier: 14-171

AVAILABLE IN 7, 8 & 9 FT BEDS OR BOLTS



THE CHAMPIONSHIP BILLIARD FABRIC

Championship products originate from superior manufacturing, and our family of worsted and woolen products provides durability, accuracy and options in colors like no other.



TOUR EDITION (14-3030-XXX)

Championship's worsted **tournament grade** fabric. Fast, accurate, most divot resisting tournament grade fabric.

Worsted Billiard Fabric, 2-ply, 70% wool 30% nylon, 24z. construction.

Available in 7' 8' 9' bed and rail sets.

Available in 13 Colors

- Championship Green
- Dark Green
- Olive
- Bottle Green
- Electric Blue
- Camel
- Euro Blue
- Navy
- Burgundy
- Wine
- Steel Gray
- Black
- Championship Blue



TITAN (14-3078-XXX)

Championship's most refined, vibrant, bright, durable home fabric. Amazingly clean, optically whitened wool.

Worsted Billiard Fabric, 75% wool 25% nylon, 21oz. construction.

Available in 7' 8' 9' bed and rail sets.

Available in 13 Colors

- Brite Pink
- Brite Gold
- Brite Orange
- Brite Blue
- Brite White
- Brite Lime
- Brite Red
- Lite Red
- Lite Taupe
- Lite Gold
- Lite Khaki
- Lite Camel
- Lite Titanium



INVITATIONAL (14-4066-XXX)

Championship's most expanded color palette with **DuPont Teflon** for true water and stain resistance.

Worsted Billiard Fabric, 75% wool 25% nylon, 20/21oz. construction.

Available in 7' 8' 9' bed and rail sets.



Available in 26 Colors

- Basic Green
- Championship Green
- Dark Green
- Red
- Olive
- Taupe
- English Green
- Bottle Green
- Electric Blue
- Golden
- Khaki
- Camel
- Academy Blue
- Purple
- Euro Blue
- Navy
- Brown
- Burgundy
- Wine
- Steel Gray
- Titanium
- Charcoal
- Black
- Championship Blue
- Aztec
- Brick



SATURN II (14-2466-XXX)

Championship's best entry level price point fabric with the added feature of **DuPont Teflon** protection.

Worsted Billiard Fabric, 75% wool 25% nylon, 19oz. construction.

Available in 7' 8' 9' bed and rail sets.



Available in 26 Colors

- Basic Green
- Dark Green
- Red
- Bottle Green
- Camel
- Euro Blue
- Navy
- Burgundy
- Wine
- Black



Red
(7) 357
(8) 358
(9) 359



Burgundy
(7) 627
(8) 628
(9) 629



Titanium
(7) 747
(8) 748
(9) 749



Charcoal
(7) 757
(8) 758
(9) 759



Steel Gray
(7) 727
(8) 728
(9) 729



Black
(7) 777
(8) 778
(9) 779



Purple
(7) 557
(8) 558
(9) 559



Olive
(7) 367
(8) 368
(9) 369



Taupe
(7) 377
(8) 378
(9) 379



Golden
(7) 537
(8) 538
(9) 539



Khaki
(7) 467
(8) 468
(9) 469



Camel
(7) 477
(8) 478
(9) 479



Brown
(7) 597
(8) 598
(9) 599



Basic Green
(7) 007
(8) 008
(9) 009



Championship Green
(7) 317
(8) 318
(9) 319



Dark Green
(7) 327
(8) 328
(9) 329



Bottle Green
(7) 397
(8) 398
(9) 399



English Green
(7) 387
(8) 388
(9) 389



Aztec
(7) 817
(8) 818
(9) 819



Brick
(7) 937
(8) 938
(9) 939



Wine
(7) 667
(8) 668
(9) 669



Academy Blue
(7) 517
(8) 518
(9) 519



Navy
(7) 587
(8) 588
(9) 589



Euro Blue
(7) 577
(8) 578
(9) 579



Electric Blue
(7) 437
(8) 438
(9) 439



Championship Blue
(7) 797
(8) 798
(9) 799



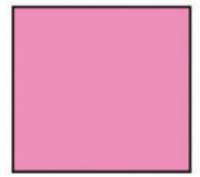
Brite Blue
(7) 857
(8) 858
(9) 859



Brite Orange
(7) 847
(8) 848
(9) 849



Brite Gold
(7) 537
(8) 538
(9) 539



Brite Pink
(7) 417
(8) 418
(9) 419



Brite Lime
(7) 907
(8) 908
(9) 909



Brite Red
(7) 917
(8) 918
(9) 919

CHALK



THE MASTER CHALK

- 18-301 Master Chalk 144/pack Blue
- 18-304 Master Chalk 144/pack Green
- 18-307 Master Chalk 144/pack Gold
- 18-310 Master Chalk 144/pack Red
- 18-339 Master Chalk 144/pack Spruce
- 18-340 Master Chalk 144/pack Burgundy

- 18-319 Master Chalk 12/pack Blue
- 18-322 Master Chalk 12/pack Green
- 18-325 Master Chalk 12/pack Gold
- 18-326 Master Chalk 12/pack Red
- 18-329 Master Chalk 12/pack Black
- 18-331 Master Chalk 12/pack Rust
- 18-334 Master Chalk 12/pack Brown
- 18-335 Master Chalk 12/pack Spruce
- 18-336 Master Chalk 12/pack Gray
- 18-341 Master Chalk 12/pack Burgundy



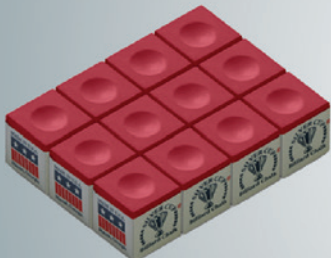
Master Cone Chalk
6/Case
18-342



THE SILVER CUP CHALK

- 18-370 Master Chalk 144/pack Blue
- 18-371 Master Chalk 144/pack Green

- 18-348 Silver Cup Chalk 12/pack Wine
- 18-361 Silver Cup Chalk 12/pack Tournament Green
- 18-362 Silver Cup Chalk 12/pack Royal Blue
- 18-363 Silver Cup Chalk 12/pack Orange
- 18-364 Silver Cup Chalk 12/pack Copper
- 18-365 Silver Cup Chalk 12/pack Electric Blue
- 18-366 Silver Cup Chalk 12/pack Olive
- 18-368 Silver Cup Chalk 12/pack Black
- 18-372 Silver Cup Chalk 12/pack Blue
- 18-373 Silver Cup Chalk 12/pack Green
- 18-374 Silver Cup Chalk 12/pack Red
- 18-375 Silver Cup Chalk 12/pack Tan
- 18-376 Silver Cup Chalk 12/pack Burgundy
- 18-377 Silver Cup Chalk 12/pack Pewter
- 18-379 Silver Cup Chalk 12/pack Spruce
- 18-380 Silver Cup Chalk 12/pack Purple
- 18-381 Silver Cup Chalk 12/pack Charcoal
- 18-382 Silver Cup Chalk 12/pack Navy



THE CONVERSION TOP

Top has rubber backing to protect table surface.
Accessories not included

21-015



THE BUTCHER BLOCK

FINISH: Butcher Block
DIMENSIONS: 55" L x 29" W x 34" H
26-120BBKD



NEED AIR HOCKEY ACCESSORIES?



Goalie Handle
22-126



Puck 3 1/4"
22-127



Puck 2 1/2"
22-128



Thunder Plus Set
21-469



Inlaid Foosball
23-108
Smooth Surface Foosball
23-112



Plastic Red Foosball Player
11 per pack
23-113



Plastic Blue Foosball Player
11 per pack
23-114

THE BEDFORD SHUFFLEBOARD

AVAILABLE SIZE & FINISHES:

- 9ft. Desert Chestnut 0026-020
- 12ft. Desert Chestnut 0026-018
- NEW** 9ft. Silver Mist 0026-030
- NEW** 12ft. Silver Mist 0026-028

DIMENSIONS:

108"L x 28"W x 32"H & 145"L x 33"W x 32"H



DINING TOP AVAILABLE: 26-019



THE BARNSTABLE SHUFFLEBOARD

AVAILABLE SIZE & FINISHES:

- NEW** 12ft. Silver Mist 0026-028
- 12ft. Desert Chestnut 0026-029

DIMENSIONS: 108"L x 28"W x 32"H & 145"L x 33"W x 32"H

DINING TOP AVAILABLE: 26-019



THE PENELOPE SHUFFLEBOARD

AVAILABLE SIZE:

- 9ft. Espresso 0026-12297
- 12ft. Espresso 0026-12298
- NEW** 9ft. Charcoal 0026-0397
- NEW** 12ft. Charcoal 0026-0398

DIMENSIONS: 108"L x 28"W x 32"H & 145"L x 33"W x 32"H

DINING TOP INCLUDED



FINISH: Antique Walnut

THE RENO SHUFFLEBOARD

AVAILABLE SIZES & FINISHES:

9ft. Weathered Dark Chestnut 0026-020

12ft. Weathered Dark Chestnut 0026-018

NEW 9ft. Antique Walnut 0026-281

DIMENSIONS: 108"L x 28"W x 32"H & 145"L x 33"W x 32"H

PLAYFIELD DIMENSIONS:

9FT. RENO/PENELOPE: 92"L x 16"W x 2"H including a 1/8" Polymer coating

9FT. BEDFORD: 92"L x 20"W x 3"H including a 1/8" Polymer coating

12FT. RENO/PENELOPE: 128"L x 16"W x 2"H including a 1/8" Polymer coating

12FT. BEDFORD/BARNSTABLE: 128"L x 20"W x 3"H including a 1/8" Polymer coating



SPEED 3
Brown Bear Wax 1lb.
22-122



SPEED 1
Super Glide Wax
22-129



SPEED 5
5 Star Wax
22-121



SPEED 6
Medium Speed Wax
22-115



SPEED 7
Shuffle Alley Wax
22-123



Replacement Pucks
23-126-PUCKS



THE
2-IN-1 GAME TABLE (Sold as Set)

FINISH: Distressed Antique Walnut

DIMENSIONS: 24"L x 25"W x 36"H chair 19"H to seat; 53" diameter x 32"H table

0026-213

THE
IMPERIAL BAR

FINISHES:

Silver Mist 0026-240

Mahogany 0026-241

Antique Walnut 0026-242

Black 0026-243

Weathered Dark Chestnut 0026-249

DIMENSIONS: 65"H x 42"L x 25"W



Mahogany



Antique Walnut



Black



THE SPECTATOR CHAIR

FINISHES:

Mahogany 26-171

Antique Walnut 26-172

Black 26-173

Weathered Dark Chestnut 26-174

Silver Mist 26-175

DIMENSIONS:

19"L x 26.5"W x 48.5"H; 33"H to seat



THE BARSTOOL

FINISHES:

Mahogany 26-191

Antique Walnut 26-192

Black 26-193

Weathered Dark Chestnut 26-194

Silver Mist 26-196

DIMENSIONS:

16" diameter x 30"H; 30"H to seat



THE BARSTOOL WITH BACK

FINISHES:

Mahogany 26-181

Antique Walnut 26-182

Black 26-183

Weathered Dark Chestnut 26-184

Silver Mist 26-185

DIMENSIONS:

19"L x 23"W x 40"H; 30"H to seat



THE PUB TABLE

FINISHES:

Mahogany 26-221

Antique Walnut 26-222

Black 26-223

Weathered Dark Chestnut 26-225

Silver Mist 26-116

DIMENSIONS:

36"L x 36"W x 41"H

Cuetec

Shane Van Boening

Nicknamed “The South Dakota Kid”, Shane started playing pool when he was two years old. Pool was in his blood; both Shane’s grandparents, his aunt and mother played on the national amateur circuit. At age 9, Shane was playing in amateur tournaments against adults.

In 2003, at age 20, Shane decided to make pool his career. He won the VNEAs in 2004 and 2005. After this early success he started playing in professional tournaments in 2007.

Along the way, Shane has become a 5 time U.S. 9 Ball Champion and 2 time Player of the Year using the Cuetec R360.

“I am excited about working with Cuetec. The Cuetec R360 has a better feel, better aiming system, and more important better control. They make great products at very reasonable prices; so, I am happy to endorse them.”

THE R360 INLAY

13-671



*Genuine Irish Linen Wrap



- Tiger Everest 10 layer laminated Pigskin tip to hold chalk better, provide ultimate cue ball control and 360 degree radial consistency.
- R360 has a high quality ABS ferrule for extra smooth transfer of energy.
- R360 is constructed using a tubular composite core surrounded by 4 computer cut A Plus grade North American Maple segments.
- The tubular composite core controls deflection, squirt, distortion, and warpage.
- The four segment shaft is computer cut around the composite core for an exact fit.
- R360 has a 15 ½” Pro Taper for a long and comfortable stroke.
- 3/8 x 14 joint pin.
- Weight adjustable, using the Acueweight weight adjustment system allowing for quick and easy weight and balance adjustment.*
- Each cue has a polished stainless steel joint and matching butt cap.
- Heavy duty rubber bumper
- Will accept 6” Cuetec Smart Extension

*To access weight bolt cavity simply unscrew butt cap with rubber bumper, do not remove rubber from the bumper.

THE R360 EDGE SERIES

13-731



*Hardwood Maple Handle

13-690



*Genuine Irish Linen Wrap

13-691



*Genuine Irish Linen Wrap

13-692



*Genuine Irish Linen Wrap

13-694



*Genuine Irish Linen Wrap

All Cuetec Two Piece
Cues Feature...

S.S.T

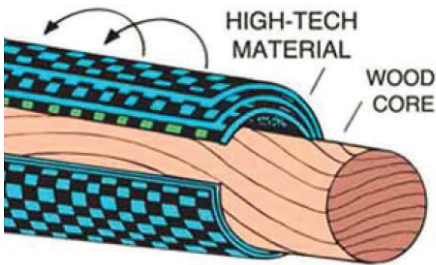
Super Slim Taper Shafts
(15.3" Taper/13mm)

&

Exclusive *Tru-Glide*® Finish

- Tiger Everest 10 layer laminated Pigskin tip to hold chalk better, provide ultimate cue ball control and 360 degree radial consistency.
- A high quality Polycarbonate ferrule for extra smooth transfer of energy.
- Power bonded clear fiberglass coating over A Plus Grade North American Maple shaft
- 15 ½" Pro Taper for a long and comfortable stroke.
- Tru-Glide finish for an extra smooth stroke
- 3/8 x 14 joint pin .
- Weight adjustable, using the Acueweight weight adjustment system allowing for quick and easy weight and balance adjustment*.
- Each cue has a matching joint and butt cap.
- Heavy duty rubber bumper
- Will accept 6" Cuetec Smart Extension

*To access weight bolt cavity simply unscrew butt cap with rubber bumper, do not remove rubber bumper.

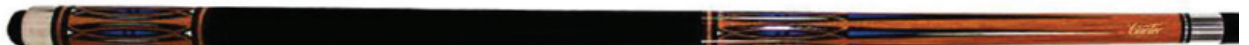


Sighting A Cue

The proper way to determine if a cue is straight, is to sight the cue from butt to tip.

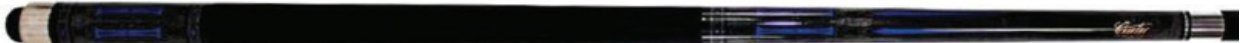
THE DENALI SERIES

13-99317



*Veltex Grip

13-99426



*Veltex Grip

13-99450






*Veltex Grip

Cuetec

THE GENTEK SERIES

- 13-711 
*Cushioned PU Rubber Grip
- 13-713 
*Cushioned PU Rubber Grip
- 13-714 
*Cushioned PU Rubber Grip
- 13-715 
*Cushioned PU Rubber Grip
- 13-716 
*Cushioned PU Rubber Grip

THE STARLIGHT SERIES

- 13-99263 
*Veltex Grip
- 13-99264 
*Veltex Grip
- 13-99266 
*Veltex Grip

THE NATURAL SERIES

- 13-723 
*Hardwood Maple Handle
- 13-724 
*Hardwood Maple Handle
- 13-725 
*Hardwood Maple Handle

THE PRESTIGE SERIES

- 13-99272 
*Veltex Grip
- 13-99273 
*Veltex Grip
- 13-99274 
*Veltex Grip
- 13-99275 
*Veltex Grip

SPECIALTY CUES

THE WTC BREAK

13-683



WTC Break Cue - Tiger 5 layer hard tip and phenolic pad | The fore-shaft is made of the finest North American Maple | The carbon connector rod increase energy transfer | The forearm is compressed Hard Rock Maple | The shaft back up is compressed North American Maple | Irish Linen * Weight adjustable * Being used by Shane Van Boening.

THE METEOR BREAK

13-681



Meteor Break Cue- Tiger 5 layer hard tip with Bakelite ferrule | Composite Power Bonded Maple shaft and butt | 19 ounce only.

THE JUMP BREAK

13-99296



Classic Jump/Break Cue - All features of the Fiberglass Pro Series | Back 17" come off for jumping | Veltex Grip

THE GRAPHITE

13-99280



Graphite Cue - All features of the Fiberglass Pro Series | Graphite clad shaft | Veltex Grip.

THE BULLET JUMP

13-684



Bullet Jump Cue - 13.5 mm Phenolic Tip * 28" shaft and 13" handle made of Carbon fiber | 6" extension made of Hard Wood and added to cue especially for longer jumps | Being used by Shane Van Boening.

THE SKY JUMP

13-682



THE SNEAKY PETE

12-99535



Deluxe hard brown leather tip | Clear fiberglass over North American Maple | Classic four prong design

Cuetec

THE WARRIOR SERIES



- Deluxe hard brown leather tip to hold chalk better and provide excellent cue ball control.
- A high quality Polycarbonate ferrule for extra smooth transfer of energy.
- Power bonded fiberglass coating over A Plus Grade North American Maple shaft
- Standard Pro Taper for a long and comfortable stroke.
- 3/8 x 14 joint pin.
- Heavy duty rubber bumper

THE PLATINUM DIAMOND LASER SERIES




R360 Shaft
 11mm 13-659
 12mm 13-668
 12.5mm 13-669
 12.75mm 13-670



S.S.T Shaft
 12mm Wide Joint Ring 13-99297
 13mm Wide Joint Ring 13-99299
 12mm Thin Joint Ring 13-99366
 13mm Thin Joint Ring 13-99367

THE PROFESSIONAL SERIES 1 PIECE CUES

12-99527  *Assorted Lengths - 12-99524 (52"-16 oz) | 12-99523 (48"-14 oz) | 13-99522 (42"-12 oz) | 12-99521 (36"-10 oz)
*Veltex Grip

12-99550  *Assorted Lengths - 12-324 (52"-16 oz) | 12-323 (48"-14 oz) | 13-322 (42"-12 oz) | 12-321 (36"-10 oz)
*Veltex Grip

THE RECREATIONAL SERIES 1 PIECE CUES

12-99555  *18oz | Veltex Grip

12-99556  *19oz | Veltex Grip

12-99557  *20oz | Veltex Grip

12-99558  *21oz | Veltex Grip



CueteC Billiard Ball Set
11-104

*Lifetime Warranty



Billiard Glove 12 per pack
17-7322

*One Size Fits All



Smart Extension
17-7307



Joint Protector
17-134



Cue Bumper
17-7292



Cue Bumper
17-7294



Chrome Butt Cap
17-127



Black Butt Cap
17-128



1oz Weight Bolts 5 per pack
13-9966



1/2oz Weight Bolts 5 per pack
13-9960





36-157



36-165



36-166



36-450



Hi-Tech Cue Treatment 24 per case
17-7300



36-451



36-452



36-455



36-456



Tip Prep Tool 12 per card
17-099

Customization is Available
Individual Tip Prep 17-094



36-457



36-460



36-461



36-462



Bowtie Tip Tool 12 per card
17-101

Customization is Available
Individual Bowtie 17-102



36-464



36-467



36-471



36-475



36-478



36-484



Cuetec 2 Butt 2 Shaft Case
15-8265



IMPERIAL CUES

THE PREMIER SERIES - TWO PIECE CUES



- 100% kiln dried hardwoods
- Genuine leather tips, tan red, pressed and shaped for perfect ball contact
- Non Porous Ferrules
- Professional taper for a perfect level stroke
- Implex joint for break down ease
- Built of select hardwoods
- Nylon wrap or hardwood grips on hardwood butts

THE TWEETEN CUE REPAIR KIT



THE PREMIER/ELIMINATOR - ONE AND 2 PIECE CUES

12-122 | 12-121 | 12-120 | 12-119

- The one piece cues are constructed of select kiln dried hardwoods
- Made from straight grain hardwood



12-134 | 12-136 | 12-137 | 12-138

- Made of Canadian Hardrock Maple
- Select grade of Maple are Kiln dried
- Dowels are turned several times removing as little as 1/8" allowing the wood to stabilize before the final assembly

THE PREMIER SERIES - ONE AND TWO PIECE CUES



12- 111 | 12- 114 | 12- 115

- The one piece cues are constructed of select kiln dried hardwoods
- Made from straight grain hardwood

12- 117 | 12- 123| 12- 124 | 12- 125

- Made from Canadian Hard rock Maple
- Made from straight grain hardwood
- Select grades of Maple are Kiln dried
- Dowels are turned several times removing as little as 1/ 8" allowing the wood to stabilize before the final assembly

THE HUSTLER SERIES

- Seasoned Maple shaft
- Deluxe leather tips
- High-impact polycarbonate ferrules
- High-impact implex or brass joints
- Nylon or wood grips



THE PRISM SERIES

- Hand selected maple shafts
- Deluxe leather tips
- High-impact polycarbonate ferrules
- High-impact implex or brass joints
- Nylon or wood grips



THE TRIUMPH

- Hand selected pro-tapered maple shafts
- Deluxe brown leather tips
- Pressed Irish linen wraps
- High-impact polycarbonate ferrules
- High-impact implex or polished stainless steel joints



CUE CASES



Champion Padded Vinyl

Fits 1 butt and 1 shaft, has textured naugahyde, padded and fleece lined interior and a shaft protector pocket.

15-117



Pro Vinyl Hard Box

Fits 1 shaft, 1 butt, has a flat handle, and a black textured finish

15-120



32" Oval Tube Case with Strap

Fits 2 shafts and 2 butts, has textured naugahyde, and one 6" and one 14" zippered pouch.

15-214



Tube Case with Strap

Fits 1 shaft, 1 butt, has a 6" zippered pouch and a black variegated naugahyde

15-150



Triangle Tube Case with Strap

Fits 1 butt and 2 shafts, has textured naugahyde, and one 6-inch zippered pouch

15-216



Premier Square Case with Strap

Fits 3 shafts and 2 butts, has 2 zippered pouches, shoulder strap and naugahyde cover.

15-228



Premier Round Case with Strap

Fits 3 shafts and 2 butts, has 2 zippered pouch, shoulder strap and naugahyde cover.

15-229



Q-Safe 2 Hole Hard Foam Case

Fits 1 shaft and 1 butt, has hard case of naugahyde, zippered pouch and shoulder strap.

15-7329



Q-Safe 2 Hole Hard Foam Case

Fits 2 shafts and 2 butts, has hard case of naugahyde, zippered pouch and shoulder strap.

15-7868



Cuetec Black Case

Fits 2 shafts, 2 butts, has 2 zippered pockets, shoulder strap and 2 padded handles

15-150



GARLANDO
G-500 EVOLUTION

FINISH: Black
DIMENSIONS: 56"L x 30"W x 36"H
WEIGHT: 167lbs
26-7935

GARLANDO
G-500 BRIARWOOD

FINISH: Briarwood
DIMENSIONS: 56"L x 30"W x 36"H
WEIGHT: 167lbs
26-7915



GARLANDO
G-2000 EVOLUTION

FINISH: Black
DIMENSIONS: 56"L x 32.5"W x 35.5"H
WEIGHT: 176lbs
26-7860



GARLANDO
OPENAIR

Indoor /Outdoor
FINISH: Blue & Tan
DIMENSIONS: 59"L x 29.5"W x 35"H
WEIGHT: 132lbs
26-7980

FOLDING LEGS





GARLANDO
 G-5000 WENGE

FINISH: Dark Wood Grained
 DIMENSIONS: 59"L x 30"W x 36"H
 WEIGHT: 176lbs
 26-7950



GARLANDO
 G-5000 EVOLUTION

FINISH: Black
 DIMENSIONS: 56"L x 30"W x 36"H
 WEIGHT: 165lbs
 26-7870



GARLANDO
 G-5000

FINISH: Wood Grained
 DIMENSIONS: 59"L x 30"W x 36"H
 WEIGHT: 176lbs
 26-7979

GARLANDO
MASTER CHAMPION

FINISH: Black
DIMENSIONS: 57"L x 29"W x 34"H
WEIGHT: 375lbs
26-7855



GARLANDO
MASTER PRO
INDOOR

FINISH: Blue
DIMENSIONS: 56"L x 32.5"W x 35.25"H
WEIGHT: 133lbs
26-7945

FOLDING LEGS





GARLANDO
F-100

FINISH: Cherrywood
DIMENSIONS: 57"L x 29"W x 34.25"H
WEIGHT: 107lbs
26-7955



GARLANDO
F-200

FINISH: Black
DIMENSIONS: 57"L x 43"W x 36"H
WEIGHT: 133lbs
26-7960



GARLANDO
WORLD CHAMPION COIN-OP

FINISH: Silver & Black
DIMENSIONS: 61"L x 47.25"W x 36"H
WEIGHT: 220lbs
26-7965

COIN CHUTE SOLD SEPARATELY

GARLANDO
G-500 GREY OAK

FINISH: Grey Oak
DIMENSIONS: 56"L x 30"W x 36"H
WEIGHT: 165lbs
26-7914



GARLANDO
G-2000 GREY

FINISH: Grey Oak
DIMENSIONS: 56"L x 32.5"W x 35.5"H
WEIGHT: 176lbs
26-7881

GARLANDO
XXL

FINISH: Blue
DIMENSIONS: 104"L x 44"W x 30"H
WEIGHT: 352lbs
Indoor 26-7850 | Outdoor 26-7845



GARLANDO PRO INDOOR



DIMENSIONS:
108"L x 60"W x 30"H
25 mm Chip Board Top
Stainless Steel 50 mm Legs and Frame

WEIGHT:
175lbs
21-380

FOLDING | RETRACTABLE NET & POSTS INCLUDED

GARLANDO MASTER INDOOR

DIMENSIONS:
108"L x 60"W x 30"H
16 mm Chip Board Top
Stainless Steel 30 mm Legs and Frame

WEIGHT:
175lbs
21-360

FOLDING | RETRACTABLE NET & POSTS INCLUDED





Net and Posts
21-471



6 Pack Balls
21-466

Protection Cover

21-461

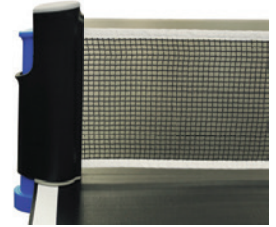
Waterproof and suitable for all types of foldable tables. Fixing system with zippers and cords for perfect fitting. Supplied with instructions.



Universal Net
21-470



F101 Tennis Table Balls (100 Pack)
21-150



Retractable Net
21-160



Thunder Paddle
21-462
3/16" hard plywood blade comes with no sponge or pimped rubber



Cyclone Paddle
21-464
1/4" hard plywood blade
3/32" sponge | Reverse rubber
ITTF code "8087"



Storm Paddle
21-463
1/4" hard plywood blade
1/16" sponge | Reverse rubber
ITTF code "8086"



Tornado Paddle
21-465
1/4" professional hard plywood blade | Handle with cork core for increased control and great ball feeling | 3/32". sponge | Reverse rubber ITTF code "SUPERSPEED"



Thunder Set
21-468
2 Paddles | 3 Balls



Thunder Plus Set
21-469
2 Paddles | 3 Balls | Net and Post



4 Player Set
21-8339
4 Paddles | 4 Balls | Net and Post

FOLDING | RETRACTABLE NET AND POSTS INCLUDED



GARLANDO
PRO WEATHERPROOF

DIMENSIONS: 108”L x 60”W x 30”H

WEIGHT: 175lbs

21-385

GARLANDO
MASTER
WEATHERPROOF

DIMENSIONS: 108”L x 60”W x 30”H

WEIGHT: 200lbs

21-365



GARLANDO
MASTER PRO
WEATHERPROOF

FINISH: Blue

DIMENSIONS: 56”L x 32.5” W x 35.25”H

WEIGHT: 133lbs

26-7880

FOLDING LEGS



Outdoor Paddles Set of 2
21-472

GARLANDO
XXL WEATHERPROOF

FINISH: Blue

DIMENSIONS: 104”L x 44”W x 30”H

WEIGHT: 352lbs

26-7845



GARLANDO
OPENAIR

FINISH: Blue & Tan
DIMENSIONS: 59" L x 29.5" W x 35" H
WEIGHT: 132lbs
26-7940

FOLDING LEGS



GARLANDO
G-2000 WEATHERPROOF

FINISH: Blue
DIMENSIONS: 56" L x 47" W x 30" H
WEIGHT: 220lbs
26-7885

GARLANDO
G-500 WEATHERPROOF

FINISH: Blue
DIMENSIONS: 56" L x 30" W x 36" H
WEIGHT: 167lbs
26-7930



THE OUTDOOR TABLES

AVAILABLE SIZES:
7ft. 29-730 & 8ft. 29-830

FINISH:
Sliver & Champagne

DIMENSIONS:
84"L x 47"W x 32"H & 98"L x 54"W x 32"H

The bed comes with waterproof Taclon cloth which is made of Pearl Board, 140 layers of Formica sheets and polyester resin. Replacement cloth is available. Playing accessories and table cover are also included.

Replacement Cloth:
Electric Blue 14-730
Camel 14-830



SILVER 7FT. TABLE
29-730





CHAMPAGNE 8FT. TABLE
29-830

BELGIAN ARAMITH BALLS



Aramith “The Legend” guarantees no polyester. Each Aramith ball is 100% “Cast-Phenolic Resin.” On the break, the cue ball reaches 482 °F! Aramith’s molecular structure is engineered to withstand these temperatures; making Aramith balls far less vulnerable to burn spots, resulting in minimal ball and table cloth wear.



2-1/4” Tournament Set
11-175



2 1/4” Pro Series
11-109



Premium 2 1/4”
11-2000



2 1/4” Premier Balls
11-111



2 1/4" Crown Style Standard
11-150



Advantage Value Pack
11-146



ASK YOUR IMPERIAL REP
ABOUT THIS POP DISPLAY



2-1/4" Tournament Set (TV SET)
11-174

Saluc S.A., Belgium is the world's largest manufacturer of pool, snooker and carom balls exported worldwide under the "Aramith" brand name. These quality billiard balls are produced from genuine case phenolic resins. A precise blend of resins guarantees exacting standards of diameter, weight and balance. The balls are baked several times in ultra modern ovens, precisely ground, engraved and polished on completely computerized equipment.

The phenolic material brings vibrant colors and stability that results in a surface that is optimally resistant to any friction between ball and cloth.



BALL SETS AND MAINTENANCE



Imperial Deluxe
11-103



Cuetec Billiard
Ball Set
11-104



Imperial Economy
Billiard Ball Set
11-7445



Ball Set with
Magnetic Cue Ball
11-COIN-M



Standard with
Oversize Cue Ball
11-150-COIN



Economy Ball Set with
Oversized Cue Ball
11-COIN-B



Deluxe Ball Set with
Oversized Cue Ball
11-COIN-A



Snooker Ball Set
11-122



Bumper Ball Set
11-123



Carmon Ball Set
11-124



Super Carom Set
11-125



"Pro Cup"
Carmon Set
11-128



Super Pro Set
11-116



Snooker Balls
11-157



Standard Bumper Set
11-164



Crest Pro Bumper
Ball Set
11-7703



Fluorescent Kit
11-165



Pearl Regulation
Weight
11-192



Training Cue Ball
11-132



Pro Cup Cue Ball
11-139



Billiard Ball Cleaner
11-183

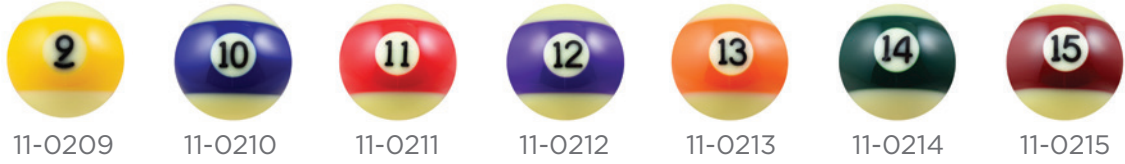


Microfiber Ball
Cleaning Cloth
11-184

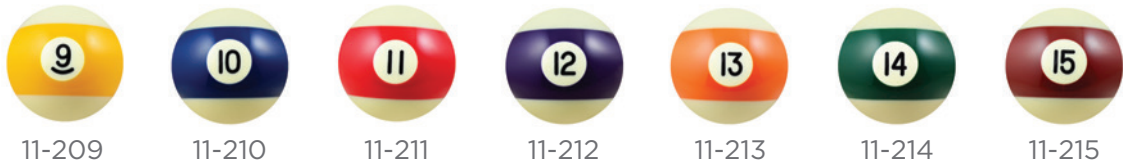


Billiard Ball Cleaner
17-212

PRO REPLACEMENT BALLS



ARAMITH PREMIER BALLS



REPLACEMENT BILLIARD BALLS



BEWARE OF IMITATIONS!
 ONLY "ARAMITH" BALLS ARE TRUE BELGIUM PRODUCTS.

ACCESSORIES & PARTS



Brown Diamond Shield
16-505



Burgundy Diamond Shield
16-506



Black Diamond Shield
16-507



Brown Smooth Shield
16-705



Burgundy Smooth Shield
16-706



Black Smooth Shield
16-707



16-166



Ball Return Pockets
16-167



Ball Return Tube
16-169



16-177



16-870



16-180



16-181



Metal Corner Cap
(Set of 6)
16-176



16-124



16-128



16-122 (4" Rubber)



16-130



16-222 (4" Plastic)

WHAT TIME IS IT?



Vintage Dart Clock
16"W x 16"H
571-3000



Vintage Billiard Rack 'EM UP' Clock
16"W x 16"H
571-2000



Vintage Billiard Triangle Clock
16"W x 16"H
571-1000



23-127



23-167



16-136



23-128



23-125



23-130



16-137



16-165



Silicone Spray
23-135



23-126



17-157



17-155



13mm Replacement Ferrule
17-252



Deluxe Cue Clip
19-155



16-156



18-172



18-158



18-162



18-163



12mm 50/box | 17-114
13mm 50/box | 17-115
14mm 50/box | 17-116



13mm 50/box | 17-105
14mm 50/box | 17-106



12mm 100/box | 17-174
12 1/2mm 100/box | 17-175
13mm 100/box | 17-176



13 1/2mm 100/box | 17-177
12mm 50/box | 17-200
13mm 50/box | 17-201
14mm 50/box | 17-202



18-142



18-247



18-405



17-126



18-173



18-166



18-229



18-261



18-129



18-131



18-116



18-111blk



Indestructible
18-105 (9 Ball Rack)
18-107 (8 Ball Rack)



18-150



18-151



18-152



18-141



18-239



18-128



18-134



18-260



17-249S
17-249M
17-249L



One Piece Bridge Stick
18-133



Two Piece Bridge Stick
18-249



Mahogany Two Piece Bridge Stick
18-249-MAHG



1/4" 20/bag | 16-234
1/8" 25/bag | 16-235
1/16" 50/bag | 16-236
1/32" 50/bag | 16-237



1 lbs Beeswax
16-231



8ft K66
Set of 6
16-112



9ft K66
Set of 6
16-113



9ft U23
Set of 6
16-118



Feather Strip
Set of 6
16-129



16-146



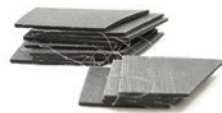
16-147



16-149



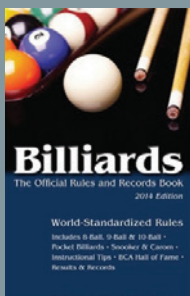
16-153



Facing Strip
12pc Set
16-132



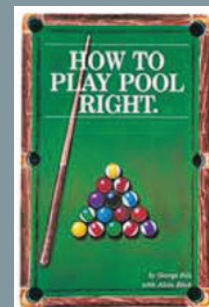
Tapered Wedge Shims
100 Pack
16-186



BCA Official Rule Book
18-167



Int'l Tournament Rule Book
18-171



How to Play Pool Right
18-254

THE SLATE

| | |
|--------------|--|
| 10-113 | 75"L x 39"W x 3/4"H One Piece (Special Order) |
| 10-115 | 83"L x 43"W x 3/4"H One Piece |
| 10-116 | 77 1/2"L x 40 1/4"W x 3/4"H One Piece |
| 10-128 | 85"L x 46"W x 1"H Three Piece K Pattern |
| 10-128CR MDF | 85"L x 46"W x 1"H Three Piece K Pattern MDF Framed |
| 10-129 | 95"L x 51"W x 3/4"H Three Piece K Pattern (Special Order) |
| 10-132 | 95"L x 51"W x 1"H Three Piece K Pattern |
| 10-132CR MDF | 95"L x 51"W x 1"H Three Piece K Pattern MDF Framed |
| 10-149 | 99"L x 53"W x 1"H (Special Order) |
| 10-150 | 107"L x 57"W x 1"H Drilled Three Piece Brunswick (Special Order) |
| 10-151MDF | 107"L x 57"W x 1"H Three Piece Brunswick Drillings Backed |

OFFICIAL LICENSED GAME ROOM PRODUCTS

*Accessories & Lighting • Furniture & Home Goods
Outdoor • Sporting Goods*



A Division of H. Betti Industries



HISTORY



Imperial is an operating division of H Betti Industries, the largest family owned distributor of amusement and vending equipment in the United States. Imperial has been in business since 1955 and serves the retail and commercial home leisure market. We are an official partner of the NFL, NHL, MLB and Collegiate teams.

Our products are of the highest quality and can be used to fit any lifestyle decor.

We offer an expansive line of complementary pool tables, billiard accessories, games, furniture and licensed merchandise including lighting fixtures and lamps, indoor and outdoor furniture, gaming accessories, sporting goods, wall art, clocks and more. Stylish and fun, our licensed products are perfect for anyone looking to show their team spirit at home or in the office.

TEAM GRID

| NFL | | MLB | | College | | NHL | |
|------|----------------------|------|-----------------------|---------|---------------------------------|------|-----------------------|
| SKU | TEAM | SKU | TEAM | SKU | TEAM | SKU | TEAM |
| XX01 | Green Bay Packers | XX01 | New York Yankees | XX01 | University Of Alabama | XX01 | Boston Bruins |
| XX02 | Dallas Cowboys | XX02 | New York Mets | XX02 | Auburn University | XX02 | Chicago Blackhawks |
| XX03 | Denver Broncos | XX03 | Boston Red Sox | XX03 | Florida State | XX31 | Pittsburgh Penguins |
| XX04 | Pittsburgh Steelers | XX04 | Cleveland Indians | XX04 | Georgia Tech | XX04 | Philadelphia Flyers |
| XX05 | San Francisco 49ers | XX05 | Chicago Cubs | XX05 | Louisiana State University | XX05 | Detroit Red Wings |
| XX06 | Kansas City Chiefs | XX06 | Chicago White Sox | XX06 | Oklahoma State University | XX06 | New York Rangers |
| XX07 | Minnesota Vikings | XX07 | Cincinnati Reds | XX07 | University Of Oklahoma | XX07 | Winnipeg Jets |
| XX08 | Miami Dolphins | XX08 | St Louis Cardinals | XX08 | University Of Georgia | XX08 | Vancouver Canucks |
| XX09 | Tampa Bay Buccaneers | XX09 | Seattle Mariners | XX09 | University Of Michigan | XX09 | Montreal Canadiens |
| XX10 | Oakland Raiders | XX10 | Atlanta Braves | XX10 | University Of Nebraska | XX10 | Toronto Maple Leafs |
| XX11 | New England Patriots | XX11 | San Diego Padres | XX11 | University Of Tennessee | XX11 | Calgary Flames |
| XX12 | New York Jets | XX12 | San Francisco Giants | XX13 | University Of Wisconsin | XX12 | Ottawa Senators |
| XX13 | New York Giants | XX13 | Los Angeles Angels | XX15 | Ohio State | XX13 | Edmonton Oilers |
| XX37 | Philadelphia Eagles | XX14 | Baltimore Orioles | XX16 | Michigan State | XX14 | Arizona Coyotes |
| XX15 | Jacksonville Jaguars | XX15 | Detroit Tigers | XX17 | Penn State | XX15 | Anaheim Ducks |
| XX16 | Washington Redskins | XX16 | Kansas City Royals | XX18 | University Of Iowa | XX16 | Buffalo Sabres |
| XX17 | Carolina Panthers | XX17 | Minnesota Twins | XX19 | University Of Missouri | XX17 | Carolina Hurricanes |
| XX18 | Detroit Lions | XX18 | Oakland Athletics | XX20 | University Of Kansas | XX18 | Colorado Avalanche |
| XX19 | Chicago Bears | XX19 | Tampa Bay Devil Rays | XX21 | Texas A & M | XX19 | Columbus Blue Jackets |
| XX20 | Cleveland Browns | XX20 | Texas Rangers | XX22 | University Of Arkansas | XX20 | Dallas Stars |
| XX21 | Buffalo Bills | XX21 | Toronto Blue Jays | XX23 | Kansas State University | XX21 | Florida Panthers |
| XX22 | Indianapolis Colts | XX22 | Arizona Diamondbacks | XX24 | Iowa State University | XX22 | Los Angeles Kings |
| XX23 | Cincinnati Bengals | XX23 | Colorado Rockies | XX25 | North Carolina State University | XX23 | Minnesota Wild |
| XX24 | Seattle Seahawks | XX24 | Miami Marlins | XX26 | University Of Florida | XX24 | Nashville Predators |
| XX25 | Baltimore Ravens | XX25 | Houston Astros | XX27 | Arizona State | XX25 | New Jersey Devils |
| XX36 | Los Angeles Chargers | XX26 | Los Angeles Dodgers | XX28 | University Of Illinois | XX26 | New York Islanders |
| XX35 | Los Angeles Rams | XX27 | Milwaukee Brewers | XX29 | Indiana University | XX27 | San Jose Sharks |
| XX28 | Tennessee Titans | XX29 | Philadelphia Phillies | XX30 | Purdue University | XX28 | St. Louis Blues |
| XX29 | Arizona Cardinals | XX30 | Pittsburgh Pirates | XX31 | University Of Louisville | XX29 | Tampa Bay Lightning |
| XX30 | Atlanta Falcons | XX33 | Washington Nationals | XX32 | University Of Kentucky | XX30 | Washington Capitals |
| XX31 | New Orleans Saints | | | XX33 | Marquette | | |
| XX34 | Houston Texans | | | XX34 | Texas Tech | | |
| | | | | XX35 | University Of Mississippi | | |
| | | | | XX36 | University Of S Carolina | | |
| | | | | XX37 | TCU | | |
| | | | | XX38 | Baylor | | |
| | | | | XX39 | University Of Wyoming | | |
| | | | | XX40 | University Of Minnesota | | |
| | | | | XX41 | University Of Utah | | |
| | | | | XX42 | Syracuse University | | |
| | | | | XX43 | Clemson University | | |

STOCKING GRID

| ITEM | NFL | MLB | NHL | COLLEGE | SPECIAL ORDER QTY |
|---|----------------------------|------------|------------|------------|-------------------|
| BILLIARD BALLS | TOP TEAM | ELITE TEAM | ELITE TEAM | ELITE TEAM | 12 |
| TEAM LOGO CUES | TOP TEAM | ELITE TEAM | ELITE TEAM | TOP TEAM | 25 |
| NEW! MODERN CUE (NFLXFIT) | ELITE TEAM | N/A | N/A | N/A | 25 |
| CUE AND CASE COMBOS | ELITE TEAM | ELITE TEAM | ELITE TEAM | ELITE TEAM | 120 |
| NEW! CORNER CUE RACKS | TOP TEAM | ELITE TEAM | ELITE TEAM | ELITE TEAM | 25 |
| BILLIARD TABLE COVERS | TOP TEAM | ELITE TEAM | ELITE TEAM | ELITE TEAM | 36 |
| GARLANDO FOOSBALL TABLES | ELITE TEAM | N/A | N/A | CUSTOM | 5 |
| DARTBOARD CABINETS | ALL | TOP TEAM | TOP TEAM | TOP TEAM | 50 |
| PUB TABLES | TOP TEAM | ELITE TEAM | N/A | ELITE TEAM | 15 |
| CHROME BAR STOOLS | TOP TEAM | TOP TEAM | N/A | ELITE TEAM | 30 |
| WOOD BAR STOOLS | TOP TEAM | ELITE TEAM | ELITE TEAM | ELITE TEAM | 30 |
| VIDEO CHAIRS W/BLUETOOTH | TOP TEAM | ELITE TEAM | ELITE TEAM | ELITE TEAM | 12 |
| NEW! OVERSIZED GAMING CHAIRS | ALL | ELITE TEAM | ELITE TEAM | ELITE TEAM | 24 |
| NEON LIGHTS | TOP TEAM | TOP TEAM | ELITE TEAM | ELITE TEAM | 5 |
| COFFEE TABLES | ELITE TEAM | ELITE TEAM | ELITE TEAM | ELITE TEAM | 10 |
| END TABLES | ELITE TEAM | ELITE TEAM | ELITE TEAM | ELITE TEAM | 10 |
| TV SNACK TRAYS | TOP TEAM | ELITE TEAM | ELITE TEAM | ELITE TEAM | 15 |
| SHELVING | ELITE TEAM | ELITE TEAM | ELITE TEAM | ELITE TEAM | 25 |
| NEW! MODERN WALL ART - 3 PIECE (NFLXFIT) | ELITE TEAM | N/A | N/A | N/A | 50 |
| NEW! MODERN 3 X 5 TAPESTRIES (NFLXFIT) | ELITE TEAM | N/A | N/A | N/A | 50 |
| NEW! MODERN 5 X 7 TAPESTRIES (NFLXFIT) | ELITE TEAM | N/A | N/A | N/A | 50 |
| NEW! MODERN FRAMED WALL ART (NFLXFIT) | ELITE TEAM | N/A | N/A | N/A | 50 |
| NEW! MODERN CLOCKS (NFLXFIT) | ELITE TEAM | N/A | N/A | N/A | 50 |
| NEW! BARS | COWBOYS, STEELERS, PACKERS | N/A | N/A | N/A | 50 |
| NEW! BAR BACKS | COWBOYS, STEELERS, PACKERS | N/A | N/A | N/A | 50 |
| VINTAGE WALL ART | TOP TEAM | LIMITED | N/A | NA | 48 |
| VINTAGE CLOCKS - ROUND | TOP TEAM | TOP TEAM | ELITE TEAM | ELITE TEAM | 30 |
| VINTAGE CLOCKS - SQUARE | TOP TEAM | TOP TEAM | ELITE TEAM | ELITE TEAM | 30 |
| COAT RACKS | TOP TEAM | ELITE TEAM | ELITE TEAM | ELITE TEAM | 36 |
| NEW! SPORTS RECLINERS | ELITE TEAM | ELITE TEAM | ELITE TEAM | ELITE TEAM | 12 |
| POWER THEATER RECLINERS WITH USB | ELITE TEAM | ELITE TEAM | ELITE TEAM | ELITE TEAM | 12 |
| TV FRAMES | TOP TEAM | N/A | ELITE TEAM | ELITE TEAM | 48 |
| MONITOR FRAMES | TOP TEAM | N/A | ELITE TEAM | ELITE TEAM | 48 |
| PREMIUM BUNGEE CHAIRS | TOP TEAM | ELITE TEAM | ELITE TEAM | ELITE TEAM | 48 |
| NEW! WOODEN ADIRONDACK CHAIRS | TOP TEAM | ELITE TEAM | ELITE TEAM | ELITE TEAM | 24 |
| TROPHY LAMPS | ELITE TEAM | CUSTOM | CUSTOM | CUSTOM | 50 |

| ITEM | NFL | MLB | NHL | COLLEGE | SPECIAL ORDER QTY |
|---|----------|------------|--------------------|---------------------|-------------------|
| BILLIARD TABLES | ALL | ALL | TOP TEAM | ALL | CUSTOM |
| BILLIARD CLOTH | ALL | ALL | TOP TEAM | ALL | CUSTOM |
| DIRECTORS CHAIRS - TABLE HEIGHT | ALL | TOP TEAM | TOP TEAM | ALL | CUSTOM |
| DIRECTORS CHAIRS - BAR HEIGHT | ALL | TOP TEAM | TOP TEAM | ALL | CUSTOM |
| CLASSIC BLACK LEATHER SOFAS | ALL | ALL | TOP TEAM | ALL | CUSTOM |
| FIRST TEAM SOFAS | ALL | ALL | TOP TEAM | ALL | CUSTOM |
| COACH LEATHER SOFAS | TOP TEAM | TOP TEAM | TOP TEAM | N/A | CUSTOM |
| BIG DADDY BLACK LEATHER & MICRO RECLINERS | ALL | ALL | TOP TEAM | ALL | CUSTOM |
| BIG DADDY TEAM COLOR LEATHER RECLINERS | LIMITED | ELITE TEAM | RANGERS & REDWINGS | MICH, OHIO ST & NEB | CUSTOM |
| BIG DADDY REALTREE CAMO RECLINERS | TOP TEAM | TOP TEAM | TOP TEAM | ELITE TEAM | CUSTOM |
| HOME TEAM RECLINERS | ALL | ALL | TOP TEAM | ALL | CUSTOM |
| COACH MICROFIBER RECLINERS | TOP TEAM | TOP TEAM | ELITE TEAM | N/A | CUSTOM |
| COACH LEATHER RECLINERS | TOP TEAM | TOP TEAM | TOP TEAM | N/A | CUSTOM |
| COACH LEATHER LIFT CHAIRS | TOP TEAM | TOP TEAM | TOP TEAM | N/A | CUSTOM |
| KIDS RECLINERS | TOP TEAM | TOP TEAM | TOP TEAM | ALL | CUSTOM |
| TWIN HEADBOARDS | TOP TEAM | TOP TEAM | ELITE TEAM | N/A | CUSTOM |
| STORAGE BENCHES | TOP TEAM | TOP TEAM | ELITE TEAM | N/A | CUSTOM |
| 3 SHADE GLASS LAMPS | ALL | ALL | N/A | ALL | CUSTOM |
| PUB LAMPS | ALL | ALL | N/A | ALL | CUSTOM |
| BILLIARD LAMPS | ALL | ALL | N/A | ALL | CUSTOM |
| TABLE LAMPS | ALL | ALL | N/A | ALL | CUSTOM |
| NEW! PARK BENCHES | ALL | ALL | ALL | ALL | CUSTOM |

NFL Elite: Packers, Steelers, Cowboys, Patriots, Broncos, Raiders

NFL Top Team: Packers, Steelers, Cowboys, Patriots, Giants, Bears, Broncos, Dolphins, Ravens, Chiefs, Vikings, 49Rs, Raiders, Eagles, Redskins, Saints, Texans, Seahawks

MLB Elite Teams: Yankees, Red Sox, Cardinals, Cubs

MLB Top Team: Yankees, Red Sox, Cardinals, Cubs, Giants, Tigers, Dodgers, Astros

NHL Elite Team: Blackhawks, Bruins, Rangers, Redwings

NHL Top Team: Blackhawks, Bruins, Flyers, Penguins, Rangers, Redwings

College Elite: Alabama, Michigan, Michigan State, Nebraska, Ohio State

College Top Team: Alabama, Georgia, LSU, Michigan, Michigan State, Nebraska, Ohio State, Penn State, Wisconsin

College All: Alabama, Arizona State, Arkansas, Auburn, Baylor, Florida, Florida State, Georgia, Georgia Tech, Indiana, Illinois, Iowa, Iowa State, Kansas, Kansas State, Kentucky, Louisville, LSU, Marquette, Michigan, Michigan State, Minnesota, Mississippi, Missouri Nebraska, NC State, Ohio State, Oklahoma, OK State, Penn State, Purdue, South Carolina, TCU, Tennessee, Tex A&M, Tex Tech, Utah, Wisconsin, Wyoming, Syracuse, Clemson

NEW 2018



Oversized Gaming Chairs

Support your favorite team while playing your favorite online game, listening to your favorite music, or just watching TV in your Officially Licensed Oversized Gaming Chair! This chair has an oversized seat and back for extra comfort. Embroidered team logo on the headrest. Memory foam in the seat and padded armrests make this the most comfortable gaming chair you can buy. Unique pouch allows you to keep gaming accessories handy and protected. 13-25/32" black powder coated nylon base and butterfly tilt mechanism. 325 pound weight capacity.

Actual Size: 46" x 26" x 50"

Carton Size: 33" x 14" x 26"

Weight: 37lbs

- Made in China
- Ships in 3 business days

Cue Racks

Solid wood corner cue rack with your favorite team logo! Holds a complete 16 ball set and 8 Cues. Perfect addition to your game room. Some assembly is required.

Actual Size: 14" x 14" x 22"

Carton Size: 15" x 2.75" x 16.5"

Weight: 8lbs

- Made in China
- Ships in 3 business days
- Expected First Shipment - July 2018





Park Benches

Enjoy relaxing on your patio or in your yard with the Officially Licensed Park Bench. Backs and seat are constructed of pine and covered with plastic sleeves for extra durability. The bench uses the primary and secondary colors of your favorite team.

Actual Size: 48" x 24" x 36"

Carton Dimension: 49" x 10" x 25"

Weight: 47lbs

- Made In The USA
- Ships in 3 business days

Wooden Adirondack Chairs

Time to enjoy your favorite team while you sit out in the sun! New colorful design with your favorite team logo on a hardwood frame. Easy to assemble.

Actual Size: 37.5" x 34" x 30.5"

Carton Size: 36.75" x 23" x 8.25"

Weight: 30lbs

- Made in China
- Ships in 3 business days
- Expected First Shipment – July 2018



Sports Recliner

Premium Sports Recliner is made especially for the fan who wants a comfortable seat for the game. Comfortable pocket coil seating and rocker recliner mechanism makes this a home run! Guaranteed for up to 275 pounds. High quality PU faux leather with 8 Inch direct embroidered logos showing off your team spirit!

Actual Size: 39" x 37" x 44"

Carton Size: 41" x 30" x 30"

Weight: 95lbs

- Made in China
- Ships in 7 to 10 business days
- Expected First Shipment – July 2018



NEW 2018



Modern Tapestry Rugs

This modern looking, light weight, tapestry will look great on your wall. It comes in 2 sizes. The smaller size is perfect for kids rooms or small rooms and the larger size is good for spacious rooms in your home. This new graphic was designed by Team Quicksnap, the winner in a student design competition held by the National Football League and Fashion Institute of Technology.

Actual Size: 39.5" x 58" x .25" | 59" x 82.75" x .25"

Carton Size: 40" x 4" x 3" | 60" x 4" x 4"

Weight: 4lbs | 9lbs

- Made in Indonesia
- Ships in 3 business days
- Expected First Shipment - July 2018

Modern Clocks

Be the first on your block or office to proudly display this uniquely designed and modern looking clock. This new graphic was designed by Team Quicksnap, the winner in a student design competition held by the National Football League and Fashion Institute of Technology. Glass face protects the timepiece and bold artwork. Works with one AA Battery - keeping perfect time! Battery not included.

Actual Size: 16" x 16" x 2"

Carton Size: 16.25" x 16.25" x 2.25"

Weight: 6lbs

- Made In China
- Ships in 3 business days
- Expected First Shipment - June 2018





Modern Wall Art

Spice up your room or office with this large, framed three piece modern art set made of canvas. This new graphic was designed by Team Quicksnap, the winner in a student design competition held by the National Football League and Fashion Institute of Technology. Unique design is sure to attract attention!

Actual Size: 31.5" x 15" x 1.5" | 25.5" x 10.5" x 1.5"

Carton Size: 33.5" x 17" x 6.25"

Weight: 7lbs

- Made in China
- Ships in 3 business days
- Expected First Shipment - June 2018

Modern Framed Wall Art

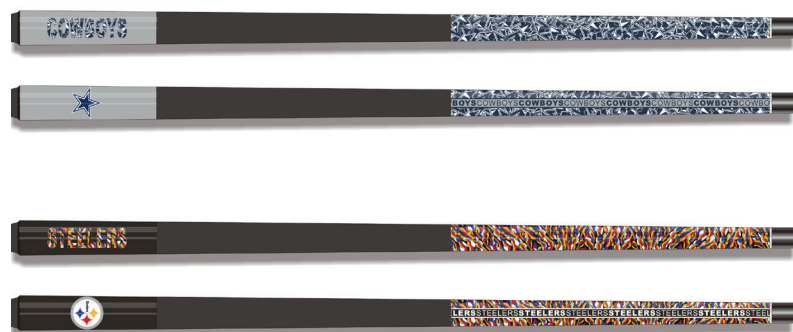
Be the first to sport the coolest NFL Wall Art ever. This new graphic was designed by Team Quicksnap, the winner in a student design competition held by the National Football League and Fashion Institute of Technology. This modern, detailed framed piece has a 3-D effect and is framed with Glass. Perfect gift for that special person who has everything!

Actual Size 24" x 16" x 1"

Carton Size: 27.5" x 2" x 19.5"

Weight: 5lbs

- Made in China
- Ships in 3 business days
- Expected First Shipment - July 2018



Modern Cues

Play your favorite game with this newly designed cue. This new graphic was designed by Team Quicksnap, the winner in a student design competition held by the National Football League and Fashion Institute of Technology. Constructed of clear Fiberglass and North American hard wood Maple producing the world's best warp resistant cue. Dent, Ding, and Scratch resistant. Shaft is finished with a nylon fiber threaded ferrule and includes a deluxe brown leather tip. NFL Only.

Actual Size: 2" x 2" x 58"

Carton Size: 5" x 5" x 31"

Weight: 2lbs

- Made in China
- Ships in 3 business days
- Expected First Shipment - July 2018

ACCESSORIES & LIGHTING

Vintage Clocks

This Officially Licensed vintage looking wall clock comes in round or square and highlights your favorite team's color and logo in a way that this could become a favorite accent in any room of the house. Large numbers showcase secondary team colors. 16-inch diameter and durable craftsmanship makes this the perfect size for any room! Works with one AA Battery - keeping perfect time! Battery not included.

Actual Size: 16" x 16" x 2"
 Carton Size: 16.25" x 16.25" x 2.25"
 Weight: 3.5-4.5lbs

- Made in China
- Ships in 3 business days



(A)



(B)

STOCKING STATUS

| NFL | MLB | NHL | COLLEGE |
|--------------|----------|------------|------------|
| Top Team | Top Team | Elite Team | Elite Team |
| (A) 171-10XX | 271-20XX | 471-40XX | 371-30XX |
| (B) 172-10XX | 272-20XX | 472-40XX | 372-30XX |

Coat Racks

The Official Licensed metal coat rack is the perfect solution for hanging jackets, hats or dog leashes. The vintage metal locker room themed rack is painted in your favorite team's colors and is a throwback from the glory days. This very functional rack can go in any room in the house and lets everyone know what team you support.

Actual Size: 17.75" x 8" x 2"
 Carton Size: 18.25" x 9.5" x 2.25"
 Weight: 2lbs

- Made in China
- Ships in 3 business days



STOCKING STATUS

| NFL | MLB | NHL | COLLEGE |
|----------|------------|------------|------------|
| Top Team | Elite Team | Elite Team | Elite Team |
| 173-10XX | 273-20XX | 473-40XX | 373-30XX |



TV Snack Trays

Versatile Snack Tray with your favorite team's logo will come in handy for the big game! The heavy-duty trays are made from select hardwoods with a durable easy to clean surface. Choose your favorite team. The perfect match to our Team Coffee Tables and Side Tables.

Actual Size: 26" x 15" x 19"
 Carton Size: 35" x 24" x 17"
 Weight: 38lbs

- Made in China
- Ships in 3 business days

STOCKING STATUS

| NFL | MLB | NHL | COLLEGE |
|----------|------------|------------|------------|
| Top Team | Elite Team | Elite Team | Elite Team |
| 86-10XX | 86-20XX | 86-40XX | 86-30XX |



Shelving

Any wall in your house can now feature your favorite Team Shelf. These beautiful, solid-wood shelves feature your favorite team's name and logo laser etched into the wooden face panel. The rich wood finish goes with every decor and adds character to any room. Perfect to display your memorabilia, keepsakes or favorite trading cards!

Actual Size: 20" x 4" x 4.5"
 Carton Size: 22" x 5.5" x 6.5"
 Weight: 3.5lbs

- Made in China
- Ships in 3 business days

STOCKING STATUS

| NFL | MLB | NHL | COLLEGE |
|------------|------------|------------|------------|
| Elite Team | Elite Team | Elite Team | Elite Team |
| 162-10XX | 262-20XX | 462-40XX | 362-30XX |

TV Frames

Brighten up your workspace or favorite room in the house with this Officially Licensed TV Frame. Patented design allows you to custom fit a TV from 40 to 50 inches. Easy to remove and install for Game Day use. Some assembly required.

Actual Size: Custom Fit
 TV Carton Dimension: 36.5" x 8" x 1.5"
 Weight: 3lbs

- Made In China
- Ships in 3 business days



STOCKING STATUS

| NFL | MLB | NHL | COLLEGE |
|----------|-----|------------|------------|
| Top Team | N/A | Elite Team | Elite Team |
| 175-10XX | N/A | 475-40XX | 375-30XX |

Monitor Frames

Brighten up your workspace or office with this Officially Licensed TV Frame. Patented design allows you to custom fit a monitor from 18 to 30 inches. Easy to remove and install. Some assembly required.

Actual Size: Custom Fit
 Monitor Carton Dimension: 24" x 5" x 1.5"
 Weight: 2lbs

- Made In China
- Ships in 3 business days



STOCKING STATUS

| NFL | MLB | NHL | COLLEGE |
|----------|-----|------------|------------|
| Top Team | N/A | Elite Team | Elite Team |
| 176-10XX | N/A | 476-40XX | 376-30XX |



Neon Lights

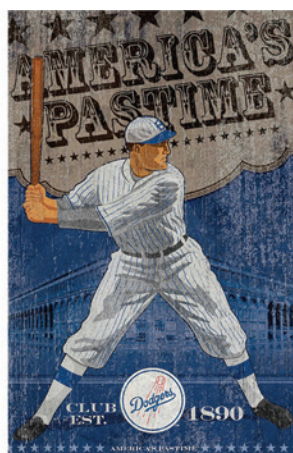
- UL Construction approved for residential use.
- Lightweight solid-state power supply; UL Listed for residential use.
- 10 Foot power cord.
- Standard 110v plug.
- Installation and sign care instructions included.
- One-Year limited warranty on power supply and functionality of the sign.

Actual size: 18" x 18" x 3"
 (Size may vary based team logo)
 Carton Size: 24" x 24" x 9"
 Weight: 15lbs

- Made in China
- Ships in 3 days

STOCKING STATUS

| NFL | MLB | NHL | COLLEGE |
|----------|----------|------------|------------|
| Top Team | Top Team | Elite Team | Elite Team |
| 190-10XX | 290-20XX | 490-40XX | 390-30XX |



Vintage Wall Art

A masterpiece for the "aficionado" of the game. Dress up your room with a vintage looking piece of art created with so much attention to detail its mind-boggling. The perfect gift for the sports fan, who has everything, well, almost everything.

Actual size: 15" x 26" x 3/4"
 Carton size: 28.5" x 17.5" x 2.5"
 Weight: 8lbs

- Made in China
- Ships in 3 business days

STOCKING STATUS

| NFL | MLB | NHL | COLLEGE |
|----------|----------|-----|---------|
| Top Team | Limited | N/A | N/A |
| 151-10XX | 251-20XX | N/A | N/A |

Trophy Lamps

A perfect piece to complete your favorite NFL team themed room! 32 Inches tall!!! Hand painted helmet on top of Trophy base will sure to be a hit in your home and the envy of your friends. Antique colors created aged appearance. Linen shade is highlighted with team colors.

Actual Size: 16" x 11" x 32"
 Carton Size: 17" x 14" x 21"
 Weight: 8lbs

- Made In China
- Ships in 3 business days



STOCKING STATUS

| NFL | MLB | NHL | COLLEGE |
|------------|--------|--------|---------|
| Elite Team | Custom | Custom | Custom |
| 158-10XX | N/A | N/A | N/A |

Pub Lamps

Officially Licensed 14-inch Pub Lamps are beautifully hand crafted old world Tiffany style stained glass hanging pub lights. Fully wired with 1 UL Approved high quality porcelain light socket and a 12-foot cord with inline switch and polarized plug. 9-feet of heavy-duty antique brass chain adds a touch of luxury to the lamp. Handmade in the USA. Chain and ceiling mounting hardware included. Bulb is not included.

Actual Size: 14" x 14" x 10"
 Carton Size: 18" x 18" x 14"
 Weight: 12lbs

- Made in the USA
- Ships in 10 to 15 business days



STOCKING STATUS

| NFL | MLB | NHL | COLLEGE |
|----------|----------|-----|----------|
| All | All | N/A | All |
| 133-10XX | 233-20XX | N/A | 333-30XX |



Table Lamps

Newly designed ROUND DOME style to fit today's décor trends. Distinguished accent lamp for the "aficionado" of the game! Hand Cut and assembled using "copper foil" technique mastered by Louis C. Tiffany. Team Logo is silk-screened directly onto your favorite team's colored glass. Includes 8-foot power cord and switch. Accommodates 2-60 watt standard light bulbs or equivalent CFL or LED.

Actual size: 16" x 16" x 24"
 Carton size: 25.75" x 22.5" x 11.75"
 Weight: 13lbs

- Made in the USA
- Ships in 10 to 15 business days

STOCKING STATUS

| NFL | MLB | NHL | COLLEGE |
|----------|----------|-----|----------|
| All | All | N/A | All |
| 159-10XX | 259-20XX | N/A | 359-30XX |



Billiard Lamps

Light up your pool table and show off your team spirit with this Officially Licensed 40-inch Rectangular Stained Glass Pool Table Light. Real stained glass that matches your favorite team's colors. Each piece of glass is hand cut and soldered into its proper place with care and precision. 14 Team logos are screen-printed directly onto the glass. Includes hanging chain, ceiling mounting plate, and installation instructions.

Actual Size: 40" x 16" x 16"
 Carton Size: 48" x 23" x 18"
 Weight: 40lbs

- Made in the USA
- Ships in 10 to 15 business days

STOCKING STATUS

| NFL | MLB | NHL | COLLEGE |
|---------|---------|-----|----------|
| All | All | N/A | All |
| 18-10XX | 18-20XX | N/A | 333-31XX |

NEW Modern Clocks

Be the first on your block or office to proudly display this uniquely designed and modern looking clock. This new graphic was designed by Team Quicksnap, the winner in a student design competition held by the National Football League and Fashion Institute of Technology. Glass face protects the timepiece and bold artwork. Works with one AA Battery - keeping perfect time! Battery not included.

Actual Size: 16" x 16" x 2"
 Carton Size: 16.25" x 16.25" x 2.25"
 Weight: 6lbs

- Made In China
- Ships in 3 business days
 Expected First Shipment - June 2018



STOCKING STATUS

| NFL | MLB | NHL | COLLEGE |
|------------|-----|-----|---------|
| Elite Team | N/A | N/A | N/A |
| 572-10XX | N/A | N/A | N/A |

NEW Modern Tapestries

This modern looking, light weight, tapestry will look great on your wall. It comes in 2 sizes. The smaller size is perfect for kids rooms or small rooms and the larger size is good for spacious rooms in your home. This new graphic was designed by Team Quicksnap, the winner in a student design competition held by the National Football League and Fashion Institute of Technology.

Actual Size: 39.5" x 58" x .25" | 59" x 82.75" x .25"
 Carton Size: 40" x 4" x 3" | 60" x 4" x 4"
 Weight: 4lbs | 9lbs

- Made in Indonesia
- Ships in 3 business days
- Expected First Shipment - July 2018



STOCKING STATUS

| NFL | MLB | NHL | COLLEGE |
|--------------------|--------|--------|---------|
| Elite Team | Custom | Custom | Custom |
| 3' x 5' - 574-10XX | N/A | N/A | N/A |
| 5' x 7' - 575-10XX | N/A | N/A | N/A |



NEW Modern Wall Art

Spice up your room or office with this large, framed three piece modern art set made of canvas. This new graphic was designed by Team Quicksnap, the winner in a student design competition held by the National Football League and Fashion Institute of Technology. Unique design is sure to attract attention!

Actual Size: 31.5" x 15" x 1.5" | 25.5" x 10.5" x 1.5"
 Carton Size: 33.5" x 17" x 6.25"
 Weight: 7lbs

- Made in China
- Ships in 3 business days
- Expected First Shipment - June 2018

STOCKING STATUS

| NFL | MLB | NHL | COLLEGE |
|------------|-----|-----|---------|
| Elite Team | N/A | N/A | N/A |
| 573-10XX | N/A | N/A | N/A |



NEW Modern Framed Wall Art

Be the first to sport the coolest NFL Wall Art ever. This new graphic was designed by Team Quicksnap, the winner in a student design competition held by the National Football League and Fashion Institute of Technology. This modern, detailed framed piece has a 3-D effect and is framed with Glass. Perfect gift for that special person who has everything!

Actual Size 24" x 16" x 1"
 Carton Size: 27.5" x 2" x 19.5"
 Weight: 5lbs

- Made in China
- Ships in 3 business days
- Expected First Shipment - July 2018

STOCKING STATUS

| NFL | MLB | NHL | COLLEGE |
|----------|-----|-----|---------|
| Top Team | N/A | N/A | N/A |
| 577-10XX | N/A | N/A | N/A |

***FURNITURE
& HOME GOODS***

Big Daddy Recliners

These Big Daddy recliners let you watch your favorite games in style. These recliners come in Leather and in Microfiber. Now you can have your favorite team's logo displayed proudly on your recliner chair. These recliners rock and recline to let you watch every game in complete comfort. 8" Embroidered Patch Logos are displayed on the headrest and leg support. A great addition to your game room. Guaranteed for up to 350 pounds.

Actual Size: 42" x 36" x 46"
 Carton Size: 41" x 42" x 44.5"
 Weight: 125lbs

- Ships LTL
- Made in USA
- Ships in 4 to 6 weeks



(A)



(B)

STOCKING STATUS

| NFL | MLB | NHL | COLLEGE |
|--------------|----------|----------|----------|
| All | All | Top Team | All |
| (A) 79-10XX | 79-20XX | 79-41XX | 79-30XX |
| (B) 140-10XX | 240-20XX | 440-41XX | 340-30XX |

Home Team Recliners

Sink into this overstuffed, Officially Licensed Home Team Recliner! 8 Inch embroidered patch logos are sewn on to the headrest and footrest showing off your team spirit! Bold Microfiber colors will really make a splash of color in your favorite room of the house!

Actual Size: 38" x 39" x 42"
 Carton Size: 34" x 39" x 41"
 Weight: 130lbs

- Ships LTL
- Made in USA
- Ships in 4 to 6 weeks



STOCKING STATUS

| NFL | MLB | NHL | COLLEGE |
|----------|----------|----------|----------|
| All | All | Top Team | All |
| 141-10XX | 241-20XX | 441-41XX | 341-30XX |



Power Theater Recliner with USB

Enjoy this comfortable theater chair with your favorite team embroidered logo on the headrest. Chair is made with premium faux leather and pocket spring coil seating for extra comfort and decked out with a smooth power mechanism, a USB Charging Station and cup holders on both arms. Special order your favorite teams early to deliver in time for start of the season!

Actual Size: 35" x 38" x 40"
 Carton Size: 33.5" x 30" x 25.5"
 Weight: 85lbs

- Ships LTL
- Made in China
- Ships in 7 to 10 business days

STOCKING STATUS

| NFL | MLB | NHL | COLLEGE |
|------------|------------|------------|------------|
| Elite Team | Elite Team | Elite Team | Elite Team |
| 117-10XX | 217-20XX | 417-40XX | 317-30XX |



NEW Import Sports Recliner

Premium Sports Recliner is made especially for the fan who wants a comfortable seat for the game. Comfortable pocket coil seating and rocker recliner mechanism makes this a home run! Guaranteed for up to 275 pounds. High quality PU faux leather with 8 Inch direct embroidered logos showing off your team spirit!

Actual Size: 39" x 37" x 44"
 Carton Size: 41" x 30" x 30"
 Weight: 95lbs

- Made in China
- Ships in 7 to 10 business days
- Expected First Shipment - July 2018

STOCKING STATUS

| NFL | MLB | NHL | COLLEGE |
|------------|------------|------------|------------|
| Elite Team | Elite Team | Elite Team | Elite Team |
| 503-50XX | 603-60XX | 803-80XX | 703-70XX |

First Team Sofas

Show your team spirit by having your favorite team's logos and colors proudly displayed on these colorful First Team Sofas. Your family and friends can watch every game in complete comfort. 8" Embroidered Patch Logos are displayed on the center cushion and base. A great addition to your game room. Perfect match to our Team Recliners.

Actual: 88" x 38" x 40"

Carton: 89" x 39" x 42"

Weight: 130lbs

- Ships LTL
- Made in USA
- Allow 4-6 weeks for delivery.



STOCKING STATUS

| NFL | MLB | NHL | COLLEGE |
|----------|----------|----------|----------|
| All | All | Top Team | All |
| 105-10XX | 205-20XX | 405-41XX | 305-60XX |

Classic Leather Sofas

Own the ultimate in game room seating with these overstuffed team Classic Leather Sofas. Your family and friends can watch every game in complete comfort. Team logos are displayed on the center cushion and base. A great addition to your game room.

Actual: 87" x 39" x 40"

Carton: 89" x 40" x 42"

Weight: 155lbs

- Ships LTL
- Made in USA.
- Allow 4-6 weeks for delivery.



STOCKING STATUS

| NFL | MLB | NHL | COLLEGE |
|---------|---------|----------|---------|
| All | All | Top Team | All |
| 79-40XX | 65-20XX | 79-71XX | 79-60XX |



STOCKING STATUS

| NFL | MLB | NHL | COLLEGE |
|----------|----------|----------|---------|
| Top Team | Top Team | Top Team | N/A |
| 127-10XX | 227-20XX | 427-40XX | N/A |

Coach Leather Sofas

The Coach Leather Sofa is a great addition for the living room, den, or Fan Cave! Beautiful styling with ultimate comfort for the family. Made of bonded leather with nail accents. This is custom manufactured in the USA. Embroidered 8-inch patch team logo is sewn on the center back cushion. Overstuffed cushions let everyone watch the game in complete comfort.

Actual Size: 82" X 37" x 40"

Carton Size: 84" x 40" X 42"

Weight: 170lbs

- Ships LTL
- Made in the USA
- Ships in 4 to 6 weeks



STOCKING STATUS

| NFL | MLB | NHL | COLLEGE |
|---------|---------|----------|---------|
| All | All | Top Team | All |
| 97-10XX | 97-20XX | 97-40XX | 97-30XX |

Classic Microfiber Sofas

Be the first in your city to own this custom designed Classic Microfiber Sofa. Available in your favorite team's color and sure to brighten up any room. Embroidered 8-inch patch team logo is sewn on the center back cushion and the team name on the center frame. Get ready to be comfortable for the big game!

Actual Size: 87" x 39" x 40"

Carton Size: 89" x 40" x 42"

Weight: 155lbs

- Ships LTL
- Made in the USA
- Ships in 4 to 6 weeks

NEW Bar & Bar Backs

New for 2018 - High Quality, Solid mahogany stained wood, ready to assemble Bar. Adjustable wine rack and shelves. Stainless steel dry sink and 2 stainless steel condiment trays. High Pressure Laminate Bar work surfaces. Matching footrests. Loaded with extras!!!!

Actual Size: 50" x 7" x 36.5"

Carton Size: 53" x 10" x 39.5"

Weight: 66lbs | 109lbs

- Made in Malaysia
- Ships LTL
- Ships in 7 to 10 business days



STOCKING STATUS

| NFL | MLB | NHL | COLLEGE |
|----------------------------|-----|-----|---------|
| Cowboys, Steelers, Packers | N/A | N/A | N/A |
| (A) 189-10xx | N/A | N/A | N/A |
| (B) 00179-10xx | N/A | N/A | N/A |

Coffee Tables

Emphasize your team spirit by having your team's logo displayed proudly on your Coffee Table. These beautiful coffee tables are made from select hardwoods with a full color team logo on black and one color on mahogany. Keep logo showing or flip over during the week for a standard table look. A great way to complete your favorite game room.

Actual Size: 17" x 44" x 24"

Carton Size: 28" x 9" x 54"

Weight: 51lbs

- Made in China
- Ships in 3 business days



STOCKING STATUS

| NFL | MLB | NHL | COLLEGE |
|------------|------------|------------|------------|
| Elite Team | Elite Team | Elite Team | Elite Team |
| 85-10XX | 85-20XX | 85-41XX | 85-30XX |



(A)



(B)

STOCKING STATUS

| NFL | MLB | NHL | COLLEGE |
|--------------|----------|----------|----------|
| All | Top Team | Top Team | All |
| (A) 100-10XX | 200-20XX | 400-41XX | 300-30XX |
| (B) 101-10XX | 201-20XX | 401-41XX | 301-30XX |

Directors Chairs

BAR & TABLE HEIGHT

The perfect seating solution for overflow crowds on game day! Officially Licensed Directors Chairs fold for easy storage. These comfortable chairs feature solid wood, black stained frames with heavy-duty canvas slings. Contemporary frame design features paddle arms and straight line leg rack. Full color team logo is shown on the seat and team name logotype is on the backrest. Industry leading 10-year warranty on the frames!

Actual Size: 21.5" x 15.5" x 46" | 21.5" x 15.5" x 34"
 Carton Size: 39" x 21" x 7" | 30" x 19" x 7"
 Weight: 7lbs | 12lbs

- Made in USA
- Ships in 7 to 10 business days

Side Tables

Show your team spirit by having your team's logo displayed proudly on your Side Tables. The beautiful side tables are made from select hardwoods with a full color team logo on black and one color on mahogany. Keep logo showing or flip over during the week for a standard table look. A great way to complete your favorite game room. The perfect match to our team Coffee Tables and TV Trays. Choose your favorite team logos.

Actual Size: 22" x 24" x 24"
 Carton Size: 29" x 9" x 34"
 Weight: 33lbs

- Made in China
- Ships in 3 business days



STOCKING STATUS

| NFL | MLB | NHL | COLLEGE |
|------------|------------|------------|------------|
| Elite Team | Elite Team | Elite Team | Elite Team |
| 85-50XX | 85-60XX | 85-81XX | 85-70XX |

Wood Bar Stools

Show your team pride with your Officially Licensed Wood Bar Stool. The bar stool is finished in a beautiful Mahogany stain to go in any room. The faux leather seat pad has extra padding for comfort. The team logo patch is sewn on for extra durability. Some assembly required.

Actual Size: 30" x 16" x 16"
 Carton Size: 32" x 15" x 6"
 Weight: 16lbs

- Made in Malaysia
- Ships in 3 business days



STOCKING STATUS

| NFL | MLB | NHL | COLLEGE |
|----------|------------|------------|------------|
| Top Team | Elite Team | Elite Team | Elite Team |
| 177-10XX | 277-20XX | 477-40XX | 377-30XX |

Chrome Bar Stools

The Officially Licensed Team Bar Stool has the team logos printed on the underside of heavy-duty, clear vinyl to prevent it from scratching off. The base is commercial quality chrome plated tubular steel with two rings for extra sturdy construction. Seat swivels a full 360 degrees. Great for seating everywhere and matches up exactly with the Imperial Pub Tables.

Actual size: 14.5" x 14.5" x 30"
 Carton Size: 20" x 8" x 26"
 Weight: 17lbs

- Made in China
- Ships in 3 business days



STOCKING STATUS

| NFL | MLB | NHL | COLLEGE |
|----------|----------|-----|------------|
| Top Team | Top Team | N/A | Elite Team |
| 26-10XX | 26-30XX | N/A | 61-40XX |



STOCKING STATUS

| NFL | MLB | NHL | COLLEGE |
|----------|------------|-----|------------|
| Top Team | Elite Team | N/A | Elite Team |
| 84-30XX | 84-40XX | N/A | 84-50XX |



STOCKING STATUS

| NFL | MLB | NHL | COLLEGE |
|----------|------------|------------|------------|
| ALL | Elite Team | Elite Team | Elite Team |
| 134-10XX | 234-20XX | 434-40XX | 334-30XX |

Pub Tables

Our Officially Licensed Pub Table is perfect for you to enjoy the game for many years to come! Retro style telescopic steel base includes leg levelers and a foot ring. Team logo is digitally reproduced and captured within an extremely durable and impact resistant high-pressure laminate. Chrome foil table edge banding completes the table.

Actual Size: 27" x 27" x 42
 Carton Size: 28" x 28" x 8"
 Weight: 36lbs

- Made in China
- Ships in 3 business days

NEW Oversized Gaming Chairs

Support your favorite team while playing your favorite online game, listening to your favorite music, or just watching TV in your Officially Licensed Oversized Gaming Chair! This chair has an oversized seat and back for extra comfort. Embroidered team logo on the headrest. Memory foam in the seat and padded armrests make this the most comfortable gaming chair you can buy. Unique pouch allows you to keep gaming accessories handy and protected. 13-25/32" black powder coated nylon base and butterfly tilt mechanism. 325 pound weight capacity.

Actual Size: 46" x 26" x 50"
 Carton Size: 33" x 14" x 26"
 Weight: 37lbs

- Made in China
- Ships in 3 business days

Twin Headboards

These twin-size fabric-covered, padded headboards show off your favorite team colors and logo. Microfiber fabric in Official Team Colors with logo. Attaches easily to Twin-Size bed frame. 8" Embroidered logos shows off your favorite team in style. Great Gift Idea. Some assembly required.

Actual size: 43" x 3" x 28"
 Carton Size: 43.5" x 3.75" x 28"
 Weight: 20lbs

- Made in the USA.
- Ships in 4 to 6 weeks



STOCKING STATUS

| NFL | MLB | NHL | COLLEGE |
|----------|----------|------------|---------|
| Top Team | Top Team | Elite Team | N/A |
| 124-10XX | 224-20XX | 424-40XX | N/A |

Storage Benches

These storage benches are very versatile and can be used for toy boxes, storage boxes and extra seating for the big game! Bold two-toned microfiber with a padded top. 8" Embroidered Logo shows off your favorite team. Sturdy wood frame, recessed handles for air holes and spring loaded hinges are included for safety purposes. Built to last! Great Gift Idea.

Actual Size: 28" x 20" x 16"
 Carton Size: 30" x 21" x 16"
 Weight: 39lbs

- Made in the USA
- Ships in 4 to 6 weeks



STOCKING STATUS

| NFL | MLB | NHL | COLLEGE |
|----------|----------|------------|---------|
| Top Team | Top Team | Elite Team | N/A |
| 125-10XX | 225-20XX | 425-40XX | N/A |

Kids Recliners

Now the kids can root for their favorite team in the comfort of a chair custom made for them. The Officially Licensed Kids Recliner comes in solid microfiber, two toned microfiber and faux leather and has a cup holder in the arm. Recliners come with an embroidered team patch logo on the headrest measuring 5 1/2 inches. . Meets child safety requirements and has a weight capacity of 75 pounds.

Actual Size: 24.5" x 23" x 28"

Carton Size: 24" x 24" x 28"

Weight: 33lbs

- Made in the USA
- Ships in 4 to 6 weeks



(A)



(B)



(C)

STOCKING STATUS

| NFL | MLB | NHL | COLLEGE |
|--------------|----------|----------|----------|
| Top Team | Top Team | Top Team | All |
| (A) 106-10XX | 206-20XX | 406-41XX | 306-30XX |
| (B) 107-10XX | 207-20XX | 407-41XX | 307-30XX |
| (C) 123-10XX | 223-20XX | 423-40XX | N/A |

NEW Park Benches

Enjoy relaxing on your patio or in your yard with the Officially Licensed Park Bench. Backs and seat are constructed of pine and covered with plastic sleeves for extra durability. The bench uses the primary and secondary colors of your favorite team.

Actual Size: 48" x 24" x 36"
 Carton Dimension: 49" x 10" x 25"
 Weight: 47lbs

- Made In The USA
- Ships in 3 business days



STOCKING STATUS

| NFL | MLB | NHL | COLLEGE |
|----------|----------|----------|----------|
| All | All | All | All |
| 188-10xx | 288-20xx | 488-40XX | 388-30xx |

Premium Bungee Chairs

Enjoy your favorite team while sitting in the comfort of your Officially Licensed Premium Bungee Chair. Perfect for any room in the house or in the dorm. Comfortable pillow makes watching TV or lounging poolside ideal. Steel frame with durable powder coated finish to protect against scratches. Easy to clean and store when not in use.

Actual Size: 30" x 28.5" x 30"
 Carton Size: 30.5" x 30.5" x 2.75"
 Weight: 13lbs

- Made in China
- Ships in 3 business days



STOCKING STATUS

| NFL | MLB | NHL | COLLEGE |
|----------|------------|------------|------------|
| Top Team | Elite Team | Elite Team | Elite Team |
| 178-10XX | 278-20XX | 478-40XX | 378-30XX |



Video Chairs with Bluetooth

Support your favorite team while playing your favorite video game, listening to your favorite music, or just watching TV in the Officially Licensed Video Chair! The chair is covered in team color fabric with an embroidered team patch logo. It is not only comfortable, it has great features including foldable design for easy storage, two high quality speakers for surround sound experience, built-in bluetooth that provides loads of fun filled entertainment.

Actual Size: 16.5" x 29" x 31"
 Carton Size: 23" x 16.35" x 13.75"
 Weight: 26lbs

- Made in China
- Ships in 3 business days

STOCKING STATUS

| NFL | MLB | NHL | COLLEGE |
|----------|------------|------------|------------|
| Top Team | Elite Team | Elite Team | Elite Team |
| 114-10XX | 214-20XX | 414-40XX | 314-30XX |



NEW Wooden Adirondack Chairs

Time to enjoy your favorite team while you sit out in the sun! New colorful design with your favorite team logo on a hardwood frame. Easy to assemble.

Actual Size: 37.5" x 34" x 30.5"
 Carton Size: 36.75" x 23" x 8.25"
 Weight: 30lbs

- Made in China
- Ships in 3 business days
- Expected First Shipment - July 2018

STOCKING STATUS

| NFL | MLB | NHL | COLLEGE |
|----------|------------|------------|------------|
| Top Team | Elite Team | Elite Team | Elite Team |
| 511-10XX | 611-60XX | 811-80XX | 711-70XX |

SPORTING GOODS

Billiard Balls

Bring your favorite team to the pool table. This unique take on the game of 8-Ball is the most fun you are going to have in your fan cave besides watching the actual game. Balls come in Home and Away colors. They are regulation size and weight and made of polyester resin that resists chipping and cracking.

Actual Size: 10" x 10" x 2.3"

Carton Size: 11" x 11" x 4"

Weight: 6lbs

- Made in China
- Ships in 3 business days



STOCKING STATUS

| NFL | MLB | NHL | COLLEGE |
|----------|------------|------------|------------|
| Top Team | Elite Team | Elite Team | Elite Team |
| 50-11XX | 50-21XX | 50-41XX | 50-40XX |

NEW Corner Cue

Racks

Solid wood corner cue rack with your favorite team logo! Holds a complete 16 ball set and 8 Cues. Perfect addition to your game room. Some assembly is required.

Actual Size: 14" x 14" x 22"

Carton Size: 15" x 2.75" x 16.5"

Weight: 8lbs

- Made in China
- Ships in 3 business days
- Expected First Shipment - July 2018



STOCKING STATUS

| NFL | MLB | NHL | COLLEGE |
|----------|------------|------------|------------|
| Top Team | Elite Team | Elite Team | Elite Team |
| 578-10XX | 678-20XX | 878-40XX | 778-30XX |



STOCKING STATUS

| NFL | MLB | NHL | COLLEGE |
|---------|---------|----------|---------|
| All | All | Top Team | All |
| 52-10XX | 52-20XX | 52-50XX | 52-40XX |



STOCKING STATUS

| NFL | MLB | NHL | COLLEGE |
|----------|------------|------------|------------|
| Top Team | Elite Team | Elite Team | Elite Team |
| 80-10XX | 80-30XX | 80-50XX | 80-40XX |

Billiard Cloth

There are few better ways to show your team spirit than having your team's logo displayed proudly on your pool table. The fabric is 100% polyester, easy to clean and stain resistant. The fabric has an anti-friction coating to create consistent English and reduce ball marks. The fabric also has a laminated backing to help control ball speed! 8' and 9' beds available. Custom made.

Actual Size: 8' x 4'

Carton Size: 5" x 5" x 67"

Weight: 8lbs

- Made in the USA
- Ships in 7 to 10 business days

Billiard Table Covers

The Billiard Table Cover is a great way to show your loyalty to your team while protecting your table from dirt. This high quality faux leather cover fits most standard 8-foot tables and is adorned with a large 18" screen-printed team logo!

Actual Size: 101" x 57" x 8"

Carton Size: 14" x 5" x 15"

Weight: 5lbs

- Made in China
- Ships in 3 business days

Fiberglass Cues

If you are a pool player you will love this Officially Licensed cue. It's constructed of fiberglass and bonded to a Northern Michigan hard rock maple core producing the most warp resistant cue in the world. Available in NFL and MLB teams. This sealed, durable cue provides the smoothest hits in the industry. The shaft is finished with a nylon fiber threaded ferrule with a "Le Professional" leather tip from Tweeten USA and the handle has a Veltex grip for control.

Actual Size: 2" x 2" x 58"
 Carton Size: 5" x 5" x 31"
 Weight: 2lbs

- Made in China
- Ships in 3 business days



STOCKING STATUS

| NFL | MLB | NHL | COLLEGE |
|----------|------------|------------|----------|
| Top Team | Elite Team | Elite Team | Top Team |
| 13-10XX | 13-30XX | 13-40XX | 13-50XX |

Cue & Case Combos

Rack 'Em Up with your favorite team! Officially Licensed solid maple cue with case set makes a great gift for any fan. Your favorite Team's logo is all over the cue displaying your favorite team. Made of solid North American maple, the cue has an ABS ferrule, leather tip, and Veltex grip. The faux leather case has a handle and a league logo.

Actual Size: 2" x 2" x 58"
 Carton Size: 5" x 3" x 38"
 Weight: 3lbs

- Made in China
- Ships in 3 business days



STOCKING STATUS

| NFL | MLB | NHL | COLLEGE |
|------------|------------|------------|------------|
| Elite Team | Elite Team | Elite Team | Elite Team |
| 72-10XX | 72-20XX | 72-50XX | 72-40XX |

NEW Modern Cues

Play your favorite game with this newly designed cue. This new graphic was designed by Team Quicksnap, the winner in a student design competition held by the National Football League and Fashion Institute of Technology. Constructed of clear Fiberglass and North American hard wood Maple producing the world's best warp resistant cue. Dent, Ding, and Scratch resistant. Shaft is finished with a nylon fiber threaded ferrule and includes a deluxe brown leather tip. NFL Only.

Actual Size: 2" x 2" x 58"

Carton Size: 5" x 5" x 31"

Weight: 2lbs

- Made in China
- Ships in 3 business days
- Expected First Shipment - July 2018



STOCKING STATUS

| NFL | MLB | NHL | COLLEGE |
|------------|-----|-----|---------|
| Elite Team | N/A | N/A | N/A |
| 576-10XX | N/A | N/A | N/A |

Dart Cabinets

The Officially Licensed Dart Cabinet Set is our #1 sporting good item year after year! It will look great on the wall of your game room, man cave, bedroom, dorm room, or office. Set includes solid pine cabinet with deluxe hardware; team customized bristle dart board, 6 logo darts (except for College licenses), 2 chalk board scorers, chalk, and eraser. Mounting hardware included.

Actual Size: 25.25" x 21.75" x 3.75"

Carton Size: 26" x 28" x 6"

Weight: 27lbs

- Made in China
- Ships in 3 business days



STOCKING STATUS

| NFL | MLB | NHL | COLLEGE |
|---------|----------|----------|----------|
| All | Top Team | Top Team | Top Team |
| 20-10XX | 20-50XX | 20-41XX | 58-40XX |

Billiard Tables

The Officially Licensed Team Pool Table is the ultimate addition to ANY fan cave. It is an 8-foot regulation sized, commercial quality billiard table with a 1-inch, 3-piece slate bed. Team graphics are permanently applied using a heat bonding process on Lexan making it scratch resistant and clear. Other features include chrome corner caps and side miters, 6 1/2-inch rails with full profile K66 Master Speed cushion rubber for true rebound, inlaid pearlized sites, and a 4-player in rail scorer. The pedestal base comes with chrome leg levelers that adjust to any floor. Cloth sold separately. Professional White Glove delivery suggested.

Actual Size: 96" x 48" x 33"

Weight: 800lbs

- Finished in the USA
- Ship LTL in 2 pallets
- Ships in 4 to 6 weeks



STOCKING STATUS

| NFL | MLB | NHL | COLLEGE |
|-----------|-----------|-----------|-----------|
| All | All | Top Team | All |
| 0064-10XX | 0064-20XX | 0064-50XX | 0064-40XX |



SPECIAL ORDERS

Ottomans

Container Program. Collapsible and stores easy!
200 pound test for seating. Licensed and
Designer Covers.

Actual Size: 14.5" x 14.5" x 14.5"

- Made in China



Bins

Container Program. Collapsible, lightweight and
perfect for storage shelves. Multiple prints to
work from.

Actual Size: 10" x 10" x 10"

- Made in China





Storage Chests

Less than Container Program – Some minimums apply. These vintage looking chests can be sold individually or in a 3 piece set.

Actual Size: 18" x 12" x 12"

- Made in China



Storage Book Sets

Less than Container Program – Some minimums apply. These vintage looking storage books are sold in a 3 piece set.

Actual Size: 12" x 8.75" x 3"

- Made in China

Furniture Sets

Container Program. Customize your own sofa, love-seat and recliner program. Direct Embroidery. Microfiber, PU or Leather. Motion or Stationary. The sky's the limit.

- Made in China



Accent Tables

Container Program. We specialize in tables of all shapes and sizes. Let us customize a program for you! Multiple sizes and finishes.

- Made in China





Barrel-Qs

Less than Container Program- Some minimums apply. This grill is perfect for Homegating or taking to the lake or the game. Large or small sizes available.

Large Unit Size: 34.25" x 22.5" x 22.5"

Small Unit Size: 16" x 16" x 23"

- Made in the Netherlands



Standard Video Chairs

Container Program. One of our best sellers every year. Promotional and can be licensed or non licensed. Logos are 5 1/2 inch embroidered patches and the team color mesh fabric is a great feature. Collapsibles for easy storage when not in use.

Actual Size: 16" x 29" x 31"

- Made in China





POOL TABLE CATALOG

DESIGNED FOR FUN. CRAFTED FOR LIFE.

SERVING THE BILLIARD INDUSTRY FOR OVER 60 YEARS

HISTORY

Imperial is a family owned business started in 1955 to serve the leisure home market. Since then, we have grown into one of the largest billiard and game room distributor in the US. Our products are of the highest quality and we offer an expansive line of complementary billiard accessories, games, furniture and licensed merchandise.

Stylish, fun and versatile our products are crafted from high quality North American hard woods. By purchasing an Imperial pool table you are making an investment in our national forests. We are a partner of the National Forest Foundation and are committed to planting five trees for every table sold. It is our way of helping to maintain the forests that we all enjoy and rely on for future generations.

Additionally, tables can be customized to suit individual taste and preference without sacrificing the cuts needed to play an excellent game. Choose from a variety of cloth colors to match the décor of your home. Dining tops are standard or available with many models for your entertainment pleasure. We take pride in offering sturdy and beautiful sporting equipment that is functional, fun and designed for the perfect game.



LIMITED LIFETIME WARRANTY

Imperial International warrants their wood line of furniture-style pool tables against defects in material or workmanship for the lifetime of the original purchaser by agreeing to repair any and all parts proven to be defective and subject to such warranty. The pool table must have been purchased from a dealer that is currently or was an Authorized Imperial International Dealer at the time of purchase as all claims must be made through the dealer*. This Limited Lifetime Warranty applies only to the original purchaser of the table and is non-transferable.

This Limited Lifetime Warranty excludes damage caused by accident, misuse, alteration, abuse, flood, fire, earthquake, or any other natural disaster. Acts of war, terrorism, or any other form of violence are also excluded from this warranty.

All Imperial accessory products are unconditionally guaranteed to be FREE of manufacturing defects. If any item is received defective, we will replace it at no charge if returned to us unused within fifteen (15) days of delivery.



*Proof of purchase from an Authorized Imperial International Dealer may be required to validate a claim against the Limited Lifetime Warranty if the claim is made through a dealer other than the Authorized Imperial International dealer that originally sold the pool table. This Limited Lifetime Warranty is void if an authorized Imperial International dealer or agent does not install the pool table.

NEW TABLES



THE TRILLIUM

AVAILABLE SIZES:
8 ft.

FINISH:
NEW Charcoal

DIMENSIONS:
101"L x 57"W x 32"H

*Due to the printing process and the nature of the wood actual product/table finish will vary.

THE
DRUMMOND

AVAILABLE SIZES:
8 ft.

FINISH:
Weathered Dark Chestnut

DIMENSIONS:
101"L x 57"W x 32"H

Matching Accessories
are Available for
the Weathered
Dark Chestnut and
Charcoal Tables!



THE
DAUPHINE

AVAILABLE SIZES:
8 ft.

FINISH:
NEW Raven

DIMENSIONS:
101"L x 57"W x 32"H

THE PENELOPE

AVAILABLE SIZES:
7 & 8 ft.

FINISHES:
Espresso & **NEW** Charcoal

DIMENSIONS:
92"L x 52"W x 32"H & 101"L x 57"W x 32"H
Distance from floor to the bottom panel is 24-1/2"

DINING TOP INCLUDED



*Due to the printing process and the nature of the wood actual product/table finish will vary.

76" STORAGE BENCH
Espresso & Charcoal
76"L x 17"W x 19"H



36" BENCH
Espresso & Charcoal
36"L x 17"W x 19"H



THE
DELUXE WALL RACK
Espresso & Charcoal
35.5"L x 58"H x 4.5"W



THE PENELOPE SHUFFLEBOARD

AVAILABLE SIZES: 9ft. & 12ft.

FINISH: Espresso & **NEW** Charcoal

DIMENSIONS: 108"L x 28"W x 32"H & 145"L x 33"W x 32"H



THE BARNSTABLE

AVAILABLE SIZE:
7 & 8 ft.

FINISH:
Desert Chestnut & **NEW** Silver Mist

DIMENSIONS:
92"L x 52"W x 32"H & 101"L x 57"W x 32"H

DINING TOP INCLUDED



THE BARNSTABLE AND BEDFORD BENCHES

FINISH: Desert Chestnut & Silver Mist
DIMENSIONS: 76"L x 17"W x 19"H & 36"L x 17"W x 19"H



Silver Mist



Desert Chestnut

THE BARNSTABLE SHUFFLEBOARD

AVAILABLE SIZE: 12ft
FINISH: Desert Chestnut & **NEW** Silver Mist
DIMENSIONS: 145"L x 33"W x 32"H



Desert Chestnut

*Due to the printing process and the nature of the wood actual product/table finish will vary.

THE BEDFORD
SHUFFLEBOARD

AVAILABLE SIZES: 9ft & 12ft

FINISH: Desert Chestnut & **NEW** Silver Mist

DIMENSIONS: 108"L x 28"W x 32"H
& 145"L x 33"W x 32"H



THE
BEDFORD

AVAILABLE SIZE:
7 & 8 ft.

FINISH:
Desert Chestnut & **NEW** Silver Mist

DIMENSIONS:
92"L x 52"W x 32"H & 101"L x 57"W x 32"H

DINING TOP INCLUDED

THE DELUXE WALL RACK

Desert Chestnut & Silver Mist
35.5"L x 58"H x 4.5"W



THE
WEATHERED DARK CHESTNUT
76" STORAGE BENCH
76"L x 17"W x 19"H



THE
WEATHERED DARK CHESTNUT 36" BENCH
36"L x 17"W x 19"H



THE
DELUXE WALL RACK
35.5"L x 58"H x 4.5"W



THE
RENO SHUFFLEBOARD

AVAILABLE SIZES: 9ft. & 12ft.

FINISH: Weathered Dark Chestnut
& Antique Walnut

DIMENSIONS: 108"L x 28"W x 32"H
& 145"L x 33"W x 32"H

*Due to the printing process and the nature of the wood actual product/table finish will vary.

THE
RENO

AVAILABLE SIZES:
7 & 8 ft.

FINISH:
Weathered Dark Chestnut

DIMENSIONS:
92"L x 52"W x 32"H & 101"L x 57"W x 32"H

7 & 8 FT. DINING TOP AVAILABLE



THE TRURO

AVAILABLE SIZE:
8ft.

FINISH:
Two Tone Antique Walnut & Black

DIMENSIONS:
101"L x 57"W x 32"H

7 & 8FT. ANTIQUE WALNUT DINING TOP AVAILABLE
7 & 8FT. BLACK DINING TOP AVAILABLE



*Due to the printing process and the nature of the wood actual product/table finish will vary.



THE
CHATHAM

AVAILABLE SIZES:
8 ft.

FINISH:
Desert Chestnut & **NEW** Silver Mist

DIMENSIONS:
101"L x 57"W x 32"H

THE BUCHANAN



AVAILABLE SIZES:
8 ft.

FINISH:
Two Tone Antique Walnut & Black

DIMENSIONS:
100"L x 57"W x 32"H

8FT. ANTIQUE WALNUT DINING TOP AVAILABLE
8FT. BLACK DINING TOP AVAILABLE

THE LINCOLN

AVAILABLE SIZES:
7 & 8 ft.

FINISH:
Antique Walnut & Mahogany

DIMENSIONS:
90"L x 52"W x 32"H & 100"L x 57"W x 32"H

7 & 8FT. ANTIQUE WALNUT DINING TOP AVAILABLE
8FT. MAHOGANY DINING TOP AVAILABLE



*Due to the printing process and the nature of the wood actual product/table finish will vary.

THE RAMSEY

AVAILABLE SIZE:

8 ft.

FINISH:

Antique Walnut

DIMENSIONS:

100" L x 55" W x 32" H

BALL & CUE STORAGE DRAWER



8FT ANTIQUE WALNUT
DINING TOP AVAILABLE



THE WASHINGTON

AVAILABLE SIZES:
7 & 8ft.

FINISH:
Antique Walnut & **NEW** Charcoal

DIMENSIONS:
90"L x 52"W x 32"H & 100"L x 57"W x 32"H

8FT. ANTIQUE WALNUT DINING TOP AVAILABLE



*Due to the printing process and the nature of the wood actual product/table finish will vary.



THE
SHADOW

AVAILABLE SIZES:
7 & 8ft.

FINISH:
Black

DIMENSIONS:
89"L x 51"W x 32"H & 101"L x 55"W x 32"H

7 & 8FT BLACK DINING TOP AVAILABLE

THE
SPECTRUM

AVAILABLE SIZES:
8 ft.

FINISH:
Black Laminate

DIMENSIONS:
103"L x 29"W x 32"H



*Due to the printing process and the nature of the wood actual product/table finish will vary.

THE
ELIMINATOR

AVAILABLE SIZE:
7 & 8 ft.

FINISH:
Black Laminate

DIMENSIONS:
102"L x 58"W x 32"H



THE RASSON VICTORY II PLUS

AVAILABLE SIZES:
8 & 9ft.

FINISH:
Black

DIMENSIONS:
104"L x 59"W & 114"L x 64"W



*Due to the printing process and the nature of the wood actual product/table finish will vary.

THE RASSON
PRO CHALLENGER

(Special Order Only)



AVAILABLE SIZES:
8 & 9ft.

FINISH:
Walnut

DIMENSIONS:
104"Lx59"W & 114"Lx64"W

THE RASSON
PRO INNOVATOR

(Special Order Only)

AVAILABLE SIZES:
7, 8 & 9ft.

FINISH:
Black

DIMENSIONS:
94"Lx54"W & 104"Lx59"W & 114"Lx64"W



THE 7 CUE BRIDGE STICK 2 PIECE WALL RACK

FINISHES: Black, Mahogany, Antique Walnut, Charcoal, Weathered Dark Chestnut, Sliver Mist, Desert Chestnut

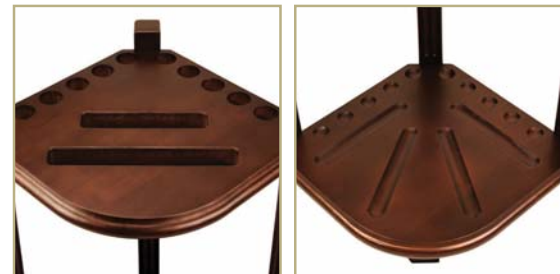


THE DOUBLE THICK CORNER RACK

FINISHES:

Black
Mahogany
Antique Walnut
Weathered Dark Chestnut
Sliver Mist
Espresso
Desert Chestnut
Charcoal

ACCESSORIES SOLD SEPARATELY



THE DELUXE WALL RACK

FINISHES:

- Black
- Mahogany
- Antique Walnut
- Weathered Dark Chestnut
- Sliver Mist
- Espresso
- Desert Chestnut
- Charcoal

ACCESSORIES SOLD SEPARATELY



EVERYTHING YOU NEED FOR YOUR TABLE IN ONE KIT!

THE GOLD BILLIARD KIT

FINISHES:

Black
Mahogany
Antique Walnut
Sliver Mist
Weathered Dark Chestnut
Desert Chestnut
Charcoal

BALLS NOT INCLUDED | CONTENTS AVAILABLE SEPARATELY



THE SILVER BILLIARD KIT

FINISHES:

Black
Mahogany
Antique Walnut

BALLS NOT INCLUDED | CONTENTS AVAILABLE SEPARATELY

*Due to the printing process and the nature of the wood actual product/table finish will vary.

THE OUTDOOR TABLES

AVAILABLE SIZES:
7 & 8ft.

FINISH:
Sliver & Champagne

DIMENSIONS:
84"L x 47"W x 32"H & 98"L x 54"W x 32"H

The bed comes with waterproof Taclon cloth which is made of Pearl Board, 140 layers of Formica sheets and polyester resin. Replacement cloth is available. Playing accessories and table cover are also included.



THE IMPERIAL BAR

FINISHES: Mahogany, Antique Walnut, Black, Silver Mist, Weathered Dark Chestnut

DIMENSIONS: 65" x 42" x 25" assembled



THE BARSTOOL

FINISHES: Mahogany, Antique Walnut, Black, Silver Mist, Weathered Dark Chestnut

DIMENSIONS: 16" diameter x 30"H; 30"H to seat



THE BARSTOOL WITH BACK

FINISHES: Mahogany, Antique Walnut, Black, Silver Mist, Weathered Dark Chestnut

DIMENSIONS: 19"L x 23"W x 40"H; 30"H to seat



THE PUB TABLE

FINISHES: Mahogany, Antique Walnut, Black, Silver Mist, Weathered Dark Chestnut

DIMENSIONS: 30"L x 36"W x 41"H



Due to the printing process and the nature of the wood actual product/table finish will vary.

Discover a comprehensive collection of fan zone products on our website.