



# HWH® AP52393 Sprinter Leveling System

2008 Sprinter 3500 Series Chassis with the V6 Diesel Engine and Coach build date after 11/2006 | Winnebago View Profile & Itasca Navion IQ View & Navion, Fleetwood Pulse, Icon and others

*Note: View or Navion 24M may need modifications on the rear battery box bracket or dump valves. Winnebago with LP Generator may need P54186.*



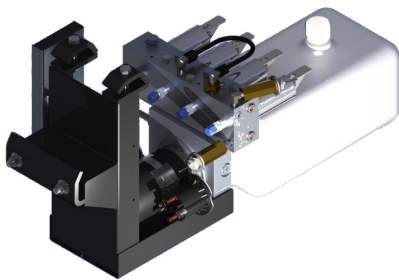
### AP51904 Jack Kit

Two Straight-Acting (Power-Extend/Spring-Retract) Jacks with a lifting capacity of 4,000 lbs. per jack on the front



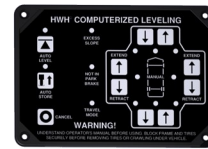
### AP52759 Rear Jack Mounted Inboard OR AP52759 Rear Jack Mounted Outboard

Two Straight-Acting (Power-Extend/Spring-Retract) Jacks with a lifting capacity of 6,000 lbs. per jack on the rear



### AP58818 Power Unit Kit

725 Series, 12 Volt DC Motor and Pump  
125 amp - 3,000 psi relief with prewired control module and jack valving

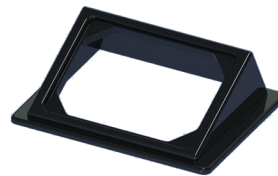


### AP52515 Control Kit

725 Series, Single-Step BI-AXIS® Touch Panel-Controlled Hydraulic Leveling System with Leveleze® Light Package



### AP0252 Hose Kit



### P35390 Bezel Plate



# STRONG, RELIABLE, HYDRAULIC POWER

Learn more about trailer jacks, RV levelers and accessories we have.