



HWH[®] AP49820 Class C Leveling System

2007 & newer Winnebago Aspect & Itasca Cambria Ford E450
Cutaway Chassis (Class C)

Computer Automatic Control with Straight-Acting Jacks



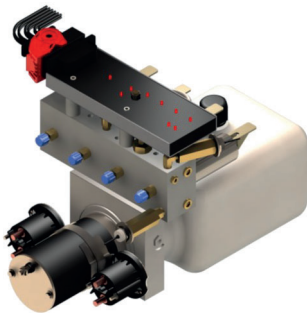
AP36364 Front Jack Kit

Two Straight-Acting
(Power-Extend/Spring-Retract) Jacks with a
lifting capacity of 4,000 lbs. per jack Standard Profile



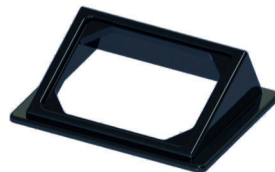
AP36365 Rear Jack Kit

Two Straight-Acting
(Power-Extend/Spring-Retract) Jacks with a
lifting capacity of 6,000 lbs. per jack on the rear



AP47564 Power Unit Kit

725 Series, 12 Volt DC Motor and
Pump 125 amp - 3,000 psi relief
with prewired control module
and jack valving



P35390 Bezel Plate



AP47561 Control Kit

725 Series, Single-Step BI-AXIS[®]
Touch Panel-Controlled Hydraulic
Leveling System with
Leveleze[®] Light Package



AP0252 Hose Kit



AP36366 Cross Tie Kit (Rear)



STRONG, RELIABLE, HYDRAULIC POWER

Learn more about trailer jacks, RV levelers and accessories we have.