

GIRARD - The Leader in Tankless Technology

NEW!



New Digital User Control Panel (UCP)

- Water Temperature Settings (adjustable from 95° to 124°)
- Fahrenheit or Centigrade Selection
- Continuous Water Outlet Temperature Reading
- Fan Icon
- Water Flow Icon
- Flame Icon
- Error Codes for Easy Diagnostics



ETL certified and approved for the U.S.A. and Canada.

Girard's GSWH-2 The # 1 Selling Tankless Waterheater!

Now with Trim Ring Option

On-Board Micro-Processor Monitors:

- Inlet Water Flow
- Inlet Water Temperature
- Outlet Water Temperature
- Regulates the burner to maintain the set **HOT** Water Temperature:
 - Now you can add COLD Water to the desired temperature
 - All the **HOT** Water you want when you want it!
- 42,000 BTUs which provides the optimum performance for an RV's plumbing
- No special LP gas lines or special plumbing required
- Quiet Brush-less Motor
- 12V power that operates at less than 3 AMPs
- Freeze Protection – Designed for Winter Use
- Designed Specifically for Recreational Vehicles
- Compact Design – Fits in any tank water heater cut-out opening



NEW Trim Ring Option

Can now be added to the door to give a "finished" look.

- Applicable for Door Kits: 2GWHD & 2GWHDB
- Available in Black or White



Hinged Door Design

Easy Latch closing. No more twist latches!

Three Door Kits

For easy replacement of any tank water heater. See back side for further information.



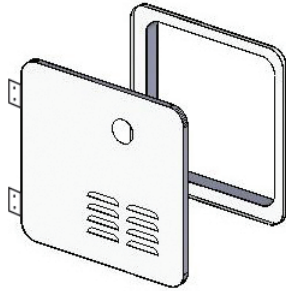
GIRARD PRODUCTS. LLC.

GIRARD - The Leader in Tankless Technology

Four door kits for easy replacement of a tank water heater...

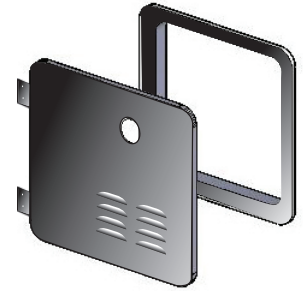
DOOR/FLANGE ASSEMBLY Part # 2GWHD POLAR WHITE

For new installations. Also applicable conversion door for the Suburban 6 gallon water heater.



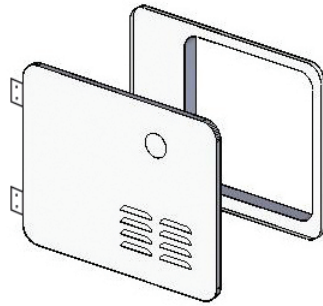
DOOR/FLANGE ASSEMBLY Part # 2GWHDB BLACK

For new installations. Also applicable conversion door for the Suburban 6 gallon water heater.



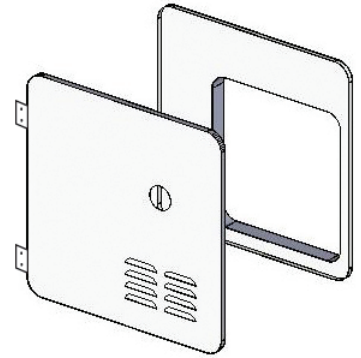
DOOR/FLANGE ASSEMBLY Part # 2GWHDA6 POLAR WHITE

Applicable conversion door for the Atwood 6 gallon water heater.



DOOR/FLANGE ASSEMBLY CONVERSION Part # 2GWHAS10 POLAR WHITE

Applicable conversion door for the Atwood or Suburban 10 gallon water heater.

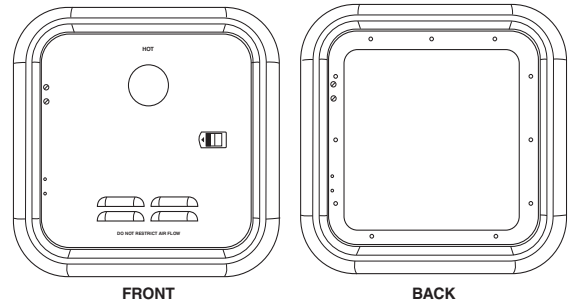


The table below summarizes the main performance specifications of the Model GSWH-2

BTU/HR	42,000 BTU
Fuel	Propane (LP Gas)
Inlet Pressure	11" WCI Min to 14" WCI Max
Manifold Pressure	1.5" - 7.2" WCI
Power Input	12VDC < 3 amp
Water Operating Pressure	125 PSI Max
Dimensions	Width: 12.5" • Height: 12.5" • Depth 15.5"
Shipping Weight	24 lbs.

DOOR TRIM RING

- Part # Description**
2GWHDTR-B Trim Ring Black (2GWHDB Door Kit)
2GWHDTR-W Trim Ring White (2GWHD Door Kit)



GIRARD PRODUCTS, LLC.



ETL certified and approved for the U.S.A. and Canada.

Discover other RV water heaters on our website.