



2020 MARINE ENTERTAINMENT CATALOGUE





THE FUTURE WITH FUSION

Fusion is passionate about enhancing your time on the water. Our determination to continually innovate has brought the integration of touchscreens to marine stereos, along with Wi-Fi audio streaming, Apple AirPlay® 2, PartyBus™ and advanced Digital Signal Processing. With the launch of the award winning Apollo Series and its many industry and world-first features and innovations, **Fusion has yet again set a new benchmark for marine audio entertainment.** A commitment to quality, high performance and brilliant audio on the water – it's what we do best.

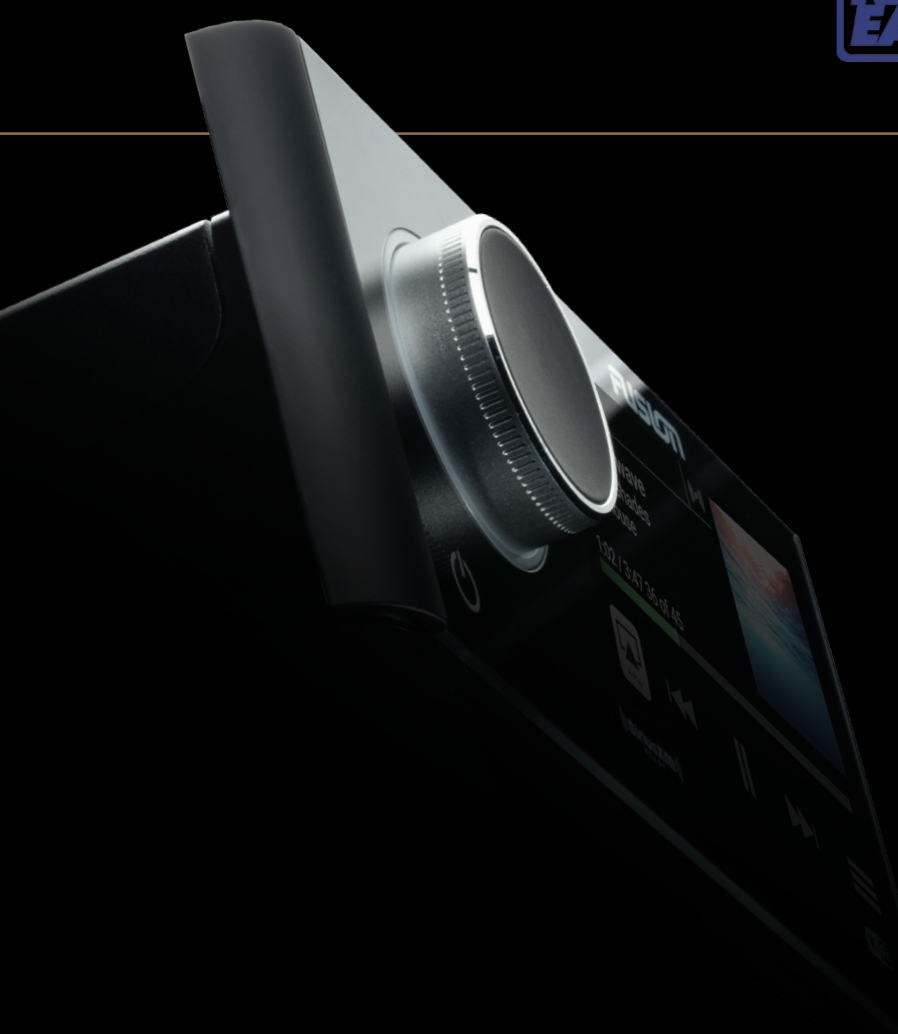
Based in Auckland, New Zealand, Fusion is founded on New Zealand's trademark 'Kiwi' determination, ingenuity and passion for life on the water. First-hand experience with the ocean and great outdoors has provided a solid understanding of what it really takes to be a successful marine entertainment manufacturer. It's this *experience and passion* that is at the core of everything that we do.

A Garmin brand since 2014, Fusion continues to grow from strength to strength, developing and delivering **world-class marine audio entertainment** systems that have become integral to excellent boating experiences all around the world.

Fusion is committed to bringing you excellent on-water audio entertainment experiences - Friends, Family, Fusion.



THE INDUSTRY AWARD-WINNING FEATURES OF THE APOLLO SERIES



MS-RA770



FUSION'S DIGITAL SIGNAL PROCESSING

The power of Fusion's DSP enables the optimization of music playing in each audio zone on your vessel, providing premium audio delivery to all Fusion speakers and subwoofers in any environment.



FUSION-PARTYBUS™

Engineered for those who value the freedom of musical choice, and freedom to play what they want, where they want, PartyBus* is Fusion's audio distribution network of the future.



HIGH QUALITY AUDIO VIA Apple AirPlay® 2

The world's first marine stereo series to bring you seamless high quality audio streaming from your favorite music app via Apple AirPlay® 2* over Wi-Fi from a compatible Apple device.



MORE SOURCE OPTIONS THAN EVER BEFORE

Take advantage of the many source options the Apollo Series has to offer, including Bluetooth®, Apple AirPlay 2*, UPnP*, Optical Audio**, Advanced SiriusXM features**, DAB+ Ready**, AM/FM Radio, AUX** and USB**.



THE WORLD'S FIRST MARINE WI-FI STEREO

Wi-Fi audio streaming provides high quality audio with a faster data transfer rate in comparison with Bluetooth®. PartyBus over Wi-Fi allows for quick and simple network setup.



OVER-THE-AIR SOFTWARE UPDATES

Over-the-air software updates are now available from your compatible device via the free Fusion-Link™ app, making the Apollo Series* intelligently simple and always up to date.



ONE PIECE GLASS TOUCH DISPLAY

The Apollo RA770 is the future of audio entertainment. Trying to locate the right button is a thing of the past - simply tap the screen to pause and play, or swipe through your playlist to your favorite song.



FUSION-LINK™ CONNECTIVITY

Fusion-Link is the industry standard protocol for on-water audio integration and control. Fusion-Link enables you to control the entertainment right from partnered marine Multi-Function Displays, compatible devices and Garmin watches.

*Available on the MS-RA670 when connected to a wireless network router or Wi-Fi enabled Apollo Series stereo network. **Not available on MS-SRX400

DSP TECHNOLOGY



SUPERIOR SOUND QUALITY IN EVERY ENVIRONMENT

A technically superior listening experience made simple, Fusion DSP optimizes the audio signal delivered to your Fusion system to produce superior sound quality at all volume levels, in every listening environment.

Distortion is now a thing of the past with Fusion DSP. The power is in the real time optimization and processing of the signal matched with the revolutionary technology built into our products, for a premium audio entertainment experience unprecedented in the marine environment.



FEED-FORWARD LIMITER

The sophisticated feed-forward limiter anticipates a peak in the audio and adjusts the gain to ensure a **distortion-free listening experience**.



VOLUME EQUALIZER

The powerful DSP chip monitors the music playing and adjusts loudness curves to ensure a **quality audio experience** at every volume level.



SPEAKER PROFILES

Our engineers have developed custom profiles for each Fusion speaker, subwoofer and amplifier, ensuring **clear and consistent audio delivery** across the whole frequency spectrum.



ENVIRONMENTAL TUNING

Using environmental information, Fusion's DSP adjusts the audio signal to ensure **optimized audio delivery** custom to each zone, for a premium audio entertainment experience.

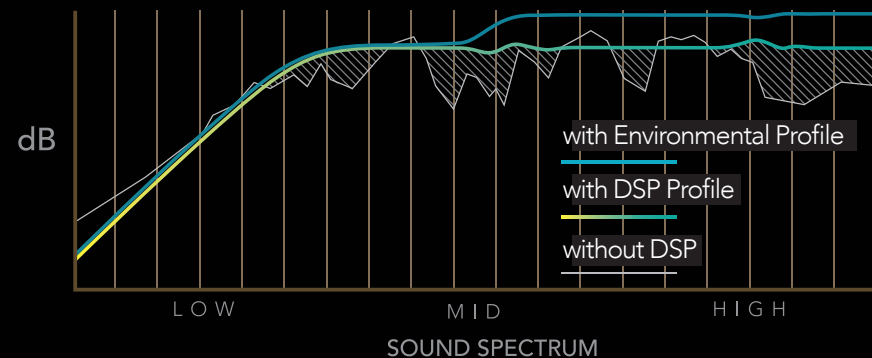
FROM THE KICK DRUM TO YOUR EARDRUM, FUSION DSP REPRODUCES YOUR MUSIC IN THE QUALITY THE MUSICIANS INTENDED.

SYSTEM APPROACH

Our system approach ensures every step of the audio chain is optimized through calculations by our audio engineers to deliver a technically superior listening experience – without the need for you to have a technical understanding.



Note: The Fusion-Link app is required for setup.



PARTYBUS™ TECHNOLOGY



PARTYBUS GIVES THE FREEDOM OF MUSICAL CHOICE ACROSS THE ENTIRE VESSEL

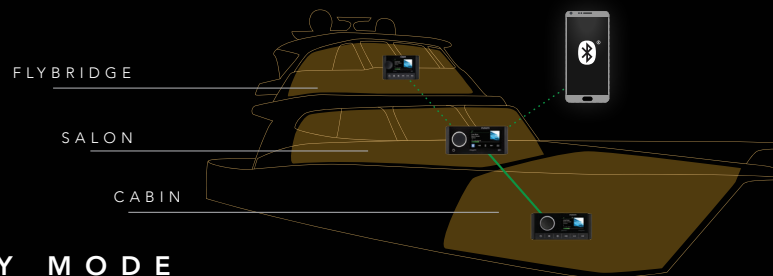
PartyBus is Fusion's audio distribution network of the future. Engineered for those who value freedom of musical choice, and freedom to play what they want, where they want.

The power of PartyBus kicks in when you add more PartyBus enabled stereos to your entertainment system. Each additional PartyBus enabled stereo gives you the option to join Party Mode and play the **same perfectly synced audio source throughout the entire vessel**. Switch into Personal Mode and listen to available audio sources from your stereo in the area of your choice without disrupting Party Mode in the other areas of the vessel.

APOLLO NETWORKING

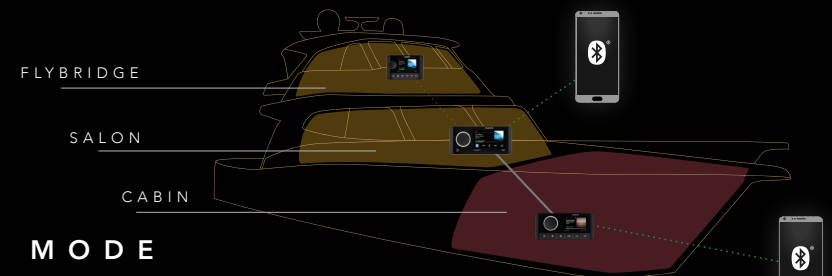
The Apollo RA770 and the SRX400 are designed with Wi-Fi on board so you can **wirelessly connect multiple Apollo stereos** without running any cables, which reduces installation time, cost and complexity.

The Apollo RA670 uses Ethernet to connect into the PartyBus network. Simply connect it to an external router (Wi-Fi network), or via an Ethernet cable to another PartyBus-enabled stereo to gain PartyBus functionality.



PARTY MODE

One Bluetooth® source playing audio perfectly synced across three PartyBus enabled stereos in Party Mode.



PERSONAL MODE

One Bluetooth® source playing independently in the Cabin without disrupting Party Mode in the Salon or Flybridge, while another Bluetooth® source continues to play audio perfectly synced across the Flybridge and Salon in Party Mode.

BUILT-IN WI-FI



DSP PROFILES FROM THE FUSION-LINK™ APP



Blowing Bluetooth® audio streaming out of the water, you can sit back and enjoy higher quality audio with Wi-Fi audio streaming – a marine industry first!



UPnP®

THE WORLD'S FIRST MARINE STEREO TO BRING YOU SEAMLESS HIGH QUALITY AUDIO STREAMING VIA Apple AirPlay® 2 & UPnP®.

You can finally enjoy the convenience and sheer quality of Wi-Fi audio streaming via Apple AirPlay 2 and UPnP on board*. The Apollo Series are the world's first marine stereos to harness the power of Apple AirPlay 2 and Wi-Fi to provide the quality of sound you deserve on the water.

Now with Apple AirPlay 2, you can stream the same audio to every compatible Apollo stereo connected to the same network, and enjoy high quality audio synchronized across the entire vessel with volume control individually or globally.



OVER-THE-AIR SOFTWARE UPDATES

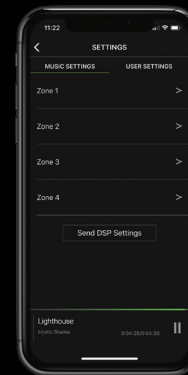
The convenience of over-the-air software updates* is now available from your compatible smartphone or device, via our free Fusion-Link™ app. The Apollo Series is intelligently simple and easy to keep up to date.



EASY-TO-INSTALL DSP PROFILES FROM YOUR COMPATIBLE DEVICE

Setting up your DSP profiles is made simple with the free Fusion-Link app. With just a few clicks, you can set up the preconfigured DSP profiles once and get back to enjoying what you love on the water, while listening to high quality audio customized for your ears and the environment. Download the free Fusion-Link remote control app for Bluetooth and Wi-Fi from the App Store® or Google Play™ and enjoy the freedom of wireless control from your compatible device.

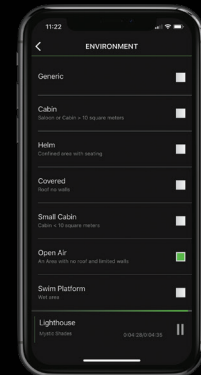
Adding a new DSP profile is easier than ever before. Just follow the 3 step process to configure your entertainment system for a technically superior listening experience.



1 Select the audio zone you want to configure



2 Select the connected Fusion speakers, amplifiers and/or subwoofers



3 Select the listening environment and enjoy the power of Fusion's DSP

*Available on the MS-RA670 when connected to a wireless network router or Wi-Fi enabled Apollo Series stereo network.

TRUE-MARINE™ DESIGN



MULTI-ZONE™ TECHNOLOGY



Fusion's **True-Marine design philosophy** stems from our collective experience confronting harsh marine and outdoor environments. With **True-Marine** accreditation you can be assured that each product is engineered from the ground up, specifically to last the test of time on your boat. Not only a measure of Fusion's quality, True-Marine accreditation has become a measure for others in our industry to aspire to.

To gain "True-Marine" status, all our products undergo extensive testing above and beyond industry standards to prove their suitability for long-term use in harsh marine conditions. All True-Marine stereos, speakers, subwoofers, amplifiers, media docks and wired remote controls are **IP (Ingress Protection) rated** to appropriate industry standards to prove their resistance to water and dust ingress. As industry leaders, however, we understand that water and dust are only two of the elements that products face on the water. This is why we also test to a higher level for **salt fog, temperature, vibration and UV protection** – all important factors for durability to ensure your products will perform reliably season after season on board.

Fusion introduced **Multi-Zone technology** to the marine industry more than **ten years ago**, giving you the freedom to independently control the music in up to four separate zones on board. Adjust the **balance, subwoofer and volume levels**, with each zone able to be named for quick zone identification, providing a simple, quick and easy way to control the audio in each zone of your boat.

Easy adjustment of each zone can be achieved both individually or collectively from your stereo, **Fusion-Link™** wired MFD or **Fusion-Link app**. Alternatively, you can install an MS-NRX300 wired remote in any audio zone for hardwired local control.



FLYBRIDGE



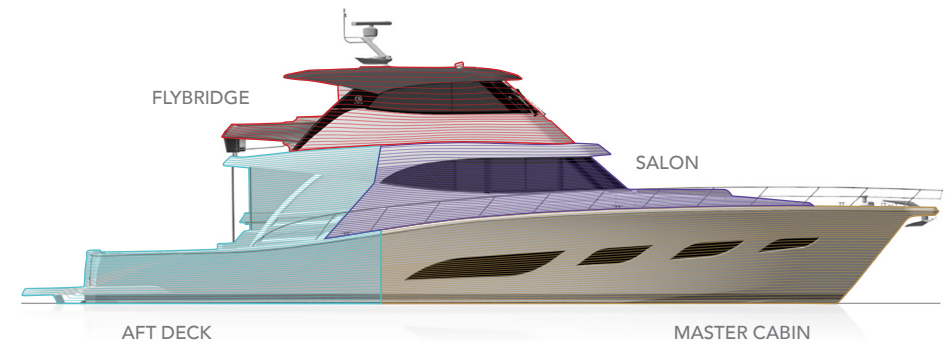
SALON



AFT DECK



MASTER CABIN



FUSION-LINK™



FUSION-LINK™ APP



FUSION-LINK™ LITE



Fusion-Link makes control of your on-water entertainment easier than ever. Quickly find your favorite song, tune in to the sports or turn up the volume all from your partnered Multi-Function Display (MFD).

Fusion-Link is the **most widely adopted protocol** for on-water audio integration, supported by the world's leading electronics manufacturers and trusted by the industry's most prestigious boat builders. Enabling partnered MFDs to interface with and control selected functions of the sophisticated **Fusion** audio interface, **Fusion-Link** makes it simple and convenient to control your on-board audio entertainment.

Wirelessly control your onboard entertainment right from your fingertips via Bluetooth® or Wi-Fi with the free **Fusion-Link app**. Simply download the app from the App Store® or Google Play™ to connect to your stereo and enjoy control via the **Fusion-Link app** from your compatible Apple or Android device.

Control your entertainment right from your wrist with the **Fusion-Link Lite app** and your compatible **Garmin** watch.

Download the free **Fusion-Link Lite app** from the Garmin Connect IQ™ store to enable wireless control via ANT® technology from your compatible Garmin watch.



UNDERSTANDING THE POWER OF FUSION



MOUNTING

Multiple mounting options are available for different Fusion products, with options to flat mount, flush mount, surface mount or bail mount, depending on your installation requirements.



CONFIGURATION

The number of line outs, sub outs or channels a Fusion stereo or amplifier can be configured with to customize your audio entertainment solution for your vessel.



POWER

The peak power output rating for each product reflects the maximum power in Watts that a product can produce to drive your entertainment system.



IMPEDANCE

The impedance of a speaker is measured in Ohms. This relates to the load presented to an amplifier when connected and determines how much power the amplifier can provide.



WATER RESISTANCE IPX STANDARD

Ingress protection ratings (IPX) reflect the level of protection each product has against water and dust ingress, giving you peace of mind season after season when out on the water.



PRODUCT ENGINEERING

The latest product design and engineering behind each product's superior performance.



AMPLIFIER TECHNOLOGY

An amplifier's technology covers the class and output specifications, including RMS power per channel and minimum speaker impedance.



CONE

Different cone materials are used to best suit the speaker design and target environment to produce professional quality sound.



USER INTERFACE

Enjoy easy, intuitive stereo control with the Fusion user interface, providing an enhanced user experience.



LED LIGHTING

LED lighting undeniably enhances your on board entertainment experience. RGB and dual color options are available within our range of speakers and subwoofers to suit the aesthetics of your vessel.

SOURCES

Our wide range of audio sources available lets you enjoy high quality audio whichever way you choose.



TWEETER

Different tweeter types and materials are used to complement each speaker design for crisp, high frequency audio reproduction.



DISPLAY

Easy to read, even in direct sunlight, our displays are available in touchscreen, color and black & white LCD options with or without optical bonding, and in varying sizes dependent on each model.

COMPATIBLE WITH APPLE PRODUCTS

Sit back and enjoy your favorite music from the latest Apple devices through your compatible Fusion stereo.

Find device compatibility in the product manuals.





Cabin Music
Motion

100

Zone 1
Zone 2
Zone 3

Sub Level
Balance
Equalizer
Volume Limits
Enable Zones
Link 2.1
Sub Filter

18.7

Home

GARMIN

FUSION

VOLUME SUB LEVEL

Bluetooth

ZONE 1 ZONE 2 ZONE 3

MARINE STEREO UNITS

APOLLO SERIES



Apollo Series

MARINE STEREOS



RA70 Series



MS-RA210



MS-BB300R



MS-BB100



Panel Stereo



StereoActive



MS-RA55

APOLLO 770



MS-RA770

THE APOLLO RA770 REDEFINES AUDIO ENTERTAINMENT WITH REVOLUTIONARY TECHNOLOGY & SUPERIOR SOUND QUALITY



INSPIRED BY APOLLO, THE GOD OF MUSIC

Building on Fusion's industry recognized True-Marine™ design philosophy, the new Apollo Series led by the Apollo RA770 takes marine audio entertainment to the next level. Through creative design and technological brilliance, a purpose-built marine audio entertainment system featuring many world-firsts has been created, including many innovations you are used to at home. Tap and swipe your way intuitively through your playlists with the glass touchscreen display, even with wet fingers, and enjoy high quality music all day long with Wi-Fi streaming using Apple AirPlay® 2 or UPnP.

Enjoy the freedom of total control with PartyBus™, along with the freedom to customize your audio to your precise preferences with DSP technology.



Sea Ray SDX 290 OB



Sea Ray Sundancer 290



Sea Ray SDX 270



- The Apollo RA770 harnesses the power of Fusion DSP, letting you optimize each audio zone on your vessel with your Fusion speakers, for premium listening in any environment. From the kick drum to your eardrum, Fusion DSP reproduces your music in the quality the musicians intended.
- Enjoy the clarity and premium quality of Wi-Fi audio streaming in a world-first for marine stereos, including the convenience of Apple AirPlay 2 and UPnP. Designed with Wi-Fi on board, the Apollo RA770 and SRX400 can also be connected without running any wires – reducing installation time, cost and complexity.
- The power of PartyBus enables other PartyBus products on the network to connect to the Apollo RA770 in Party Mode and play the same perfectly synced audio source throughout the entire vessel. Opt into Personal Mode on any PartyBus enabled product and listen to available audio sources from your stereo in the area of your choice without disrupting Party Mode in the other areas of the vessel.

KEY FEATURES

The Apollo RA770 surpasses previous standards set in audio entertainment, creating a new, world-class audio entertainment experience featuring:



Custom audio profiles for each zone in your vessel to deliver higher quality audio



Fusion-PartyBus is the new way to enjoy music on your boat



Over-the-air software updates from your compatible device via the free **Fusion-Link™** app



Wi-Fi audio streaming via **Apple AirPlay 2** and UPnP.



4.3" touchscreen with play, pause and skip functions using touch display commands



Control your tunes from a compatible Multi-Function Display, compatible device or Garmin watch



Multi-Zone™ Technology control in four separate audio zones



IPX6 & IPX7 Ingress Protection rating



Class-D amplifier design for higher efficiency and output



280 W peak power output



2 Ohm stereo stable for wiring up to 2x 4 Ohm speakers per channel

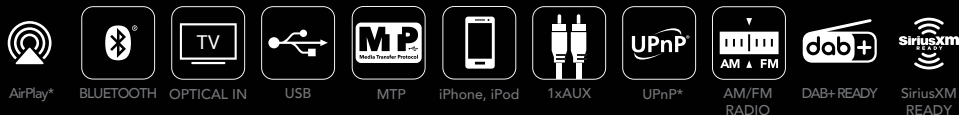


APOLLO 670



MS-RA670

THE APOLLO RA670
RE-EMBODIES AWARD-WINNING
AUDIO INNOVATION IN A NEW
COMPACT FORM FACTOR



ADDING TO THE SUM OF AUDIO INNOVATION

Introducing the newest addition to the Apollo Family – the brand new **Apollo RA670** inherits key audio innovations and technological brilliance from the award-winning Apollo RA770, re-embodied in a more compact form factor. Featuring a brilliant, optically bonded, full-color LCD display, Fusion’s **DSP technology** for a technically superior listening experience and system protection, Fusion-Link™ integration and control from compatible MFDs, smart devices and Garmin watches, Multi-Zone™ control in up to three audio zones, **Apple AirPlay® 2** and **PartyBus™** capabilities when connected to a Wi-Fi or Apollo network, the **Apollo RA670** is truly a powerful extension of the Apollo Series.



Axopar 37 Brabus



Regal 33 OBX





Sea Ray Sundancer 320

- The Apollo RA670 harnesses the power of Fusion DSP, letting you optimize each audio zone on your vessel with your Fusion speakers, for premium listening in any environment. From the kick drum to your eardrum, Fusion DSP reproduces your music in the quality the musicians intended.
- The power of PartyBus enables other PartyBus products on the network to connect to the Apollo RA670 (via Ethernet) in Party Mode and play the same perfectly synced audio source throughout the entire vessel. Opt into Personal Mode on any PartyBus enabled product and listen to available audio sources from your stereo in the area of your choice without disrupting Party Mode in the other areas of the vessel. (*)
- Enjoy the clarity and quality of Wi-Fi audio streaming and Apple AirPlay 2 capabilities, for a seamless, more integrated audio entertainment experience, along with over-the-air software updates allowing you keep your system up to date with the latest features with convenience. (*)
- With optical audio input capability, you can now enjoy audio from your TV through the Apollo RA670 system, recreating a home-theater like experience on your vessel.

KEY FEATURES

The Apollo RA670 harnesses the innovation of the Apollo Series delivering a world-class audio entertainment experience featuring:



Custom audio profiles for each zone in your vessel to deliver higher quality audio



Fusion-PartyBus* is the new way to enjoy music on your boat



Over-the-air software updates* from your compatible device via the free Fusion-Link app



2.7" color display



Control your tunes from a compatible Multi-Function Display, compatible device or Garmin watch



Multi-Zone Technology control in three separate audio zones



IPX6 & IPX7 Ingress Protection rating for performance season after season



Class-D amplifier design for higher efficiency and output



280 W peak power output



2 Ohm stereo stable for wiring up to 2x 4 Ohm speakers per channel

(*) Available when connected to a wireless network router or Wi-Fi enabled Apollo Series stereo network.

APOLLO SRX400



MS-SRX400

THE APOLLO SRX400 IS A PERFECT COMBINATION OF COMPACT DESIGN & SUPERIOR SOUND



QUALITY AUDIO IN A COMPACT ZONE STEREO

For convenience without compromising on quality. The premium design, engineering and powerful feature set of the Apollo Series is combined in a compact, versatile form factor in the Apollo SRX400. With PartyBus™, enjoy synchronized music from one source throughout your boat, or the freedom to choose different sources in every area. Make the most of crisp, clear high-quality music with Wi-Fi streaming using Apple AirPlay® 2 or UPnP, allowing you to enjoy audio streaming with minimal quality loss. With Fusion's advanced DSP technology, the Apollo SRX400 delivers a technically superior listening experience, without the need for you to have any technical understanding. The Apollo SRX400 is a perfect combination of compact design and superior sound.



Sea Ray SDX 250



Sea Ray Sunsport 230 OB





- Providing a tidy, premium finish, you can install your Apollo SRX400 easily in one piece. Being 2 Ohm stereo stable, this zone stereo can extend your audio entertainment and connect up to two 4 Ohm speakers per channel.
- The Apollo SRX400 harnesses the power of Fusion DSP to optimize the sound sent to your Fusion speakers on your vessel, giving you premium audio in any zone. From the kick drum to your eardrum, Fusion DSP reproduces music in the quality the musicians intended.
- Enjoy the clarity and premium quality of Wi-Fi audio streaming in a world-first for marine stereos, including the convenience of Apple AirPlay 2 and UPnP. Designed with Wi-Fi on board, the Apollo RA770 and SRX400 can also be connected to each other without running any wires – reducing installation time, cost and complexity.
- Harness the power of PartyBus and enjoy the freedom of musical choice by installing the Apollo SRX400 into different audio zones on board. Connect to your Apollo RA770 in Party Mode and play the same perfectly synced audio throughout your vessel or opt into Personal Mode and listen to your own music in any area without disrupting Party Mode around the boat.

KEY FEATURES

The Apollo SRX400, with its innovative technology and design, offers a new world-class audio entertainment experience, featuring:



Custom audio profiles for each zone in your vessel to deliver higher quality audio



Fusion-PartyBus is the new way to enjoy music on your boat



Over-the-air software updates from your compatible device via the free Fusion-Link™ app



Wi-Fi audio streaming via Apple AirPlay 2 and UPnP.



Control your tunes from a compatible Multi-Function Display or compatible device



2.7" color display



IPX6 & IPX7 Ingress Protection rating



Class-D amplifier design for higher efficiency and output



140 W peak power output



2 Ohm stereo stable for wiring up to 2x 4 Ohm speakers per channel



Compact design



RA70SERIES

1 YEAR WARRANTY



MS-RA70 | MS-RA70N | MS-RA70NSX

FUSION'S SLEEKEST VALUE-PACKED MARINE STEREO IN A DIN SIZED FORM FACTOR

The value-for-money **RA70 Series** is perfect for delivering quality audio on board. Seamlessly replace any existing standard DIN sized stereo with our most popular choice for on-water listening.

BLUETOOTH
 USB
 iPhone, iPod
 1x AUX
 AOA
 AM/FM RADIO

DAB+ READY
 SIRIUSXM-READY



Boston Whaler Outrage 380

KEY FEATURES

- Control your tunes from a compatible Multi-Function Display, compatible device or Garmin watch
- Multi-Zone™ Technology control in two separate audio zones
- Optically bonded LCD
- DIN sized mounting options
- IPX7 Ingress Protection rating from the front panel
- SiriusXM-Ready with Advanced Features (RA70NSX only)
- 200 W peak power output

Enjoy the flexibility to control your entertainment from anywhere on board using any of the multiple connectivity options available with the **MS-RA70N & MS-RA70NSX**:

- NMEA 2000® network via a partnered Multi-Function Display.
- NRX Series remote when incorporated into a powered NMEA 2000 network.

Additionally, all **RA70 series** stereos feature Bluetooth® Wireless Technology via a compatible smart device and ANT® Technology via a compatible Garmin watch with the free **Fusion-Link™ Lite app**.

Make the most of **SiriusXM** satellite radio, album art and a selection of advanced features available with the **MS-RA70NSX**:



ADVANCED FEATURES

- TuneStart™
- TuneMix™
- Instant Replay
- Song/Artist Alerts
- SportsFlash™ Alerts
- Game Alerts

Note: MS-RA70NSX is only available in the USA. A SiriusXM Connect Vehicle Tuner and subscription are required (continental US & Canada only).

NEW

RA210

1 YEAR WARRANTY

works with arxremote



MS-RA210



Boston Whaler 240 Dauntless Pro

NEW AESTHETICS, COMPACT DESIGN & ENHANCED AUDIO CAPABILITIES

The new **MS-RA210** is a compact marine stereo featuring Fusion's new-look design aesthetics and DSP for an **optimized audio entertainment experience**.



KEY FEATURES



Control your tunes from a compatible Multi-Function Display, compatible device or Garmin watch



IPX6 and IPX7 Ingress Protection rating from the front panel



Multi-Zone Technology control in two separate audio zones



Class-D amplifier design for higher efficiency and output



2.7" color display



200 W peak power output

With a brilliant 2.7" optically bonded, full-color LCD, Bluetooth and ANT® capabilities, Fusion-Link control, and IPX6 & IPX7 rated from the front face, the **MS-RA210** is a sleek addition to your vessel.

Download the free **Fusion-Link** app from the App Store® or Google Play™ and follow the **three-step process** to configure the **DSP profiles** in your RA210 for an enhanced listening experience.



APOLLO STEREO UNITS SPEAKERS SUBWOOFERS AMPLIFIERS REMOTES ACCESSORIES COMPARISON CHARTS SPECIFICATIONS

PANEL-STEREO

1 YEAR WARRANTY



PS-A302B

PS-A302BOD



Leopard 50

THE PANEL-STEREO IS THE ULTIMATE PLUG & PLAY, ALL-IN-ONE SOLUTION FOR AUDIO ENTERTAINMENT

OUTSTANDING AUDIO IN AN ALL-IN-ONE, PLUG & PLAY SOLUTION

Outstanding on-board audio from a single product is only a **Panel-Stereo** away. An impressive collection of acoustic features with brilliant design ensures you can enjoy quality music **anywhere on board** from the convenience of a single unit.

The magic is in the details. Experience premium, optimized audio with the perfectly tuned enclosure combining **built-in amplification**, stereo source selection, two 3" speakers and a large surface passive bass radiator. An unbelievably smooth frequency response is produced with **Fusion's Digital Signal Processing**, along with high efficiency for outstanding audio reproduction – all from a one-piece, easy to install design.

Now including an IP65 weatherproof and UV resistant design in the **PS-A302BOD** outdoor, the **Panel-Stereo** range is all you need for quality listening anywhere on board.



BLUETOOTH USB iPhone, iPod 2xAUX AOA AM/FM RADIO





PANEL STEREO

ONE SOLUTION



INDOOR



OUTDOOR

The **Panel-Stereo** is designed to save you time and money through a quick and simple installation process. Requiring only 12V dc power, a ground connection and an AM/ FM antenna at installation, with a single cut-out at the most, it is a true **plug-and-play**, simple, all-in-one audio entertainment solution.

A spacer is also available for surface installation, depending on the depth available and finish required, for a professional quality indoor installation. This 43mm spacer allows for installation directly onto **any flat surface with no mounting cut-out required**.

Enjoy the flexibility of wireless control of your on board entertainment from anywhere on your vessel with the **Fusion-Link™** remote control app, with multiple connectivity options available:

- **Bluetooth® Wireless Technology** via a compatible smart device.
- **ANT®** Technology via a wireless Fusion ARX remote, or a compatible Garmin watch with the Fusion-Link Lite app.

KEY FEATURES

Outstanding engineering and attention to detail has resulted in an ultimate plug & play, all-in-one audio entertainment solution.



Hi-Fi audio reproduction through Digital Signal Processing technology



Control your tunes from a compatible device or Garmin watch



Professional sound quality with preconfigured DSP



Flush, flat or surface mounting options available



IP65 Ingress Protection rating from the front face



Class-D amplifier design for higher efficiency and output



140 W peak power output



Sealed, tuned enclosure with a passive bass radiator



USB port located on the front of the stereo for media player or USB flash drive connection



Voice prompts to guide operation



BB300R



MS-BB300R

MS-NRX300



Harris Pontoon Sunliner 220

A PERFECT BLEND OF PERFORMANCE AND SUBTLETY IN A BLACK BOX

When space is a premium at the helm, a compact audio entertainment solution is required. There is no need to compromise on performance with the 'plug and play' feature-packed **MS-BB300R** black box including the **NRX300** remote to occupy minimal dash space.



KEY FEATURES



Control your tunes from a compatible Multi-Function Display



200 W peak power output



Multi-Zone™ Technology control in up to three separate audio zones



Built-in Class-AB amplifier



IPX7 Ingress Protection rated NRX300 wired remote





BB100

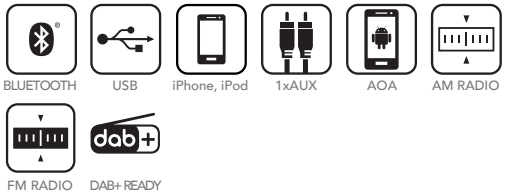
1 YEAR WARRANTY



MS-BB100

A COMPACT, VALUE-PACKED BLACK BOX ENTERTAINMENT SOLUTION

There is no need to compromise on quality with our most compact Black Box audio entertainment system. The **MS-BB100** includes a compact IPX7 remote with an embedded **Bluetooth® receiver** for enhanced range while entertaining on the water.



KEY FEATURES

- Control your tunes from a compatible Multi-Function Display, compatible device or Garmin watch
- IPX7 rated wired remote with embedded Bluetooth® receiver
- Multi-Zone Technology control in up to two separate audio zones (available via Fusion-Link™ wired/wireless control or a compatible remote)
- Built-in Class-AB amplifier
- Flat or flush mounting option for wired remote
- 200 W peak power output



Sealegs Sport Rib

STEREOACTIVE

2 YEAR WARRANTY



STEREOACTIVE / ACTIVESAFE

THE ONLY MARINE STEREO YOU CAN USE 365 DAYS A YEAR IN ANY APPLICATION

Designed and engineered to produce crystal clear music in any day of the year, the **StereoActive** and the **ActiveSafe*** enhances your life and adventures on and off the water.



Smuggler Strata

KEY FEATURES

- FUSION LINK** CONTROL: Control your tunes from a compatible device or Garmin watch
- 40W PEAK**: 40 W peak power output
- DIRECTIONAL**: Directional speakers aim the music towards you for quality listening
- PUCK**: A puck mount is included for quick and easy installation with no holes or wires
- IPX7 FLOATS**: IPX7 water resistant marine stereo that floats
- 20 HOUR BATTERY**: 20 hour maximum battery life

Combining **quality music reproduction**, intelligent functionality and an extensive feature set, this rugged, portable, water resistant and buoyant stereo is prepared for anything.

The **StereoActive** provides powerful audio delivery in the outdoor environment, with two 20 Watt 2.5" custom designed directional speakers, a passive radiator and Class-D amplifier, all perfectly tuned for the ruggedized housing. Each active driver has a dual neodymium magnet system structure to deliver the full range of sound at extended volume levels.



- WS-SA150B**: Blue StereoActive
- WS-SA150W**: White StereoActive
- WS-SA150R**: Red StereoActive
- WS-DK150B**: Blue ActiveSafe
- WS-DK150W**: White ActiveSafe
- WS-DK150R**: Red ActiveSafe

*ActiveSafe sold separately

RA55

1 YEAR WARRANTY



MS-RA55

FUSION'S MOST COMPACT AND COMPETITIVE MARINE STEREO EVER

Perfect for small boats, this compact stereo will keep singing even after exposure to the marine elements. With an IPX5 water resistant front panel, the **MS-RA55** delivers on quality while remaining our most compact and competitively priced marine stereo yet.



BLUETOOTH



1xAUX



AM RADIO



FM RADIO



Stingray 216CC

KEY FEATURES



Multi-Zone™ Technology control in two separate audio zones



IPX5 Ingress Protection rating from the front panel



2.3" LCD



180 W peak power output



Compact size (shallow mounting depth of only 55mm)



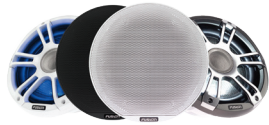
Line out





MARINE SPEAKERS

SIGNATURE SERIES



Signature Series Speakers



Signature Series
Wake Tower Speakers



Signature Series Tweeters

XS SERIES



XS Series Speakers

FM SERIES



FM Series Speakers

OTHER SPEAKERS



EL Series



Sound Panel



SM Series



True-Marine



In-ceiling



Box Speakers

SIGNATURE SERIES SPEAKERS



SPORTS WHITE

CLASSIC WHITE

SPORTS CHROME

EXCEPTIONAL DESIGN &
ACOUSTIC ENGINEERING
HAS CREATED A SPEAKER
RANGE WITH A STUNNING
SIGNATURE SOUND

THE POWER OF MUSIC

Pushing the boundaries of what is possible on the water even further, Fusion's new generation **Signature Series** marine speakers offer unparalleled performance even when exposed to the harsh marine environment.

Featuring **enhanced acoustics and redesigned sports grilles**, the new generation Signature Series range is so acoustically stunning, and at the same time so robust and well-formed, it delivers a truly **unprecedented audio experience** out on the water.

Signature Series speakers are available in 6.5", 7.7" and 8.8" designs with both **Classic** and **Sports** styled grilles that incorporate the finest materials and latest acoustic technologies including CURV Cone, silk dome tweeters and optimized magnet structures.



Leopard 51 Catamaran

8.8" 330 WATT COAXIAL MARINE SPEAKERS

SG-F88W - Classic White marine speakers

SG-FL88SPW - Sports White speakers with LEDs

SG-FL88SPC - Sports Chrome speakers with LEDs

7.7" 280 WATT COAXIAL MARINE SPEAKERS

SG-C77W - Classic White marine speakers

SG-CL77SPW - Sports White speakers with LEDs

SG-CL77SPC - Sports Chrome speakers with LEDs

6.5" 230 WATT COAXIAL MARINE SPEAKERS

SG-C65W - Classic White marine speakers

SG-CL65SPW - Sports White speakers with LEDs

SG-CL65SPC - Sports Chrome speakers with LEDs

CLASSIC BLACK GRILLES

SG-X65B - Classic Black marine grilles

SG-X77B - Classic Black marine grilles

SG-X88B - Classic Black marine grilles





ENGINEERING AND CONSTRUCTION

SILK DOME TWEETER

The silk dome tweeter provides a smooth upper frequency response and increased efficiency that delivers a true symphony to the ears.

DUAL-COLOR LED LIGHTING DIFFUSER

The LED diffuser cap not only protects the LEDs and circuitry from the harsh marine environment, it delivers an evenly spread color illumination for an unparalleled aesthetic feel.

CURV CONE TECHNOLOGY

CURV is a woven fibre composite, which is heat pressed to form a lighter and stronger cone. This delivers greater sound definition and higher output.

LARGE DIAMETER VOICE COIL

Delivering an increase in real power and efficiency, the voice coil provides a signature sound exclusive to the Signature Series speakers.



FULLY SEALED CROSSOVER COMPONENTS

All crossover components are sealed, resulting in enhanced protection from the harsh marine environment. This delivers an improved frequency response at the crossover point for a detailed audio spectrum and a new level of acoustic performance.

HIGH GRADE ENGINEERED BASKET CONSTRUCTION

The basket housing is made from high grade engineered plastics to deliver unprecedented durability when exposed to the marine environment.



Streamline 26 TE

KEY FEATURES

Exceptional mechanical design and acoustic engineering have created a fully featured speaker range. It is what the Power of Music is made of.



CURV Cone Technology



Silk dome tweeter



Dual-color diffused LED lighting options (Sports style only)



Large diameter voice coil



IP65 Ingress Protection rating



330 W peak power output



4 Ohm impedance



Fully sealed crossover components



High grade basket construction



Designed to comply with ISO12216

SIGNATURE SERIES WAKE TOWER SPEAKERS



SG-FT88SPC

SG-FT88SPWC

THE WAKE TOWER SPEAKERS
ARE DESIGNED TO DELIVER
CRYSTAL CLEAR, HIGH
PERFORMANCE AUDIO
AT ALL VOLUME LEVELS.

For those serious about their sounds while enjoying high speeds on the water, the **Signature Series Wake Tower speakers** deliver it all. Acoustically optimized and engineered for quality audio at any volume level, these speakers are perfect for providing the soundtrack to your on-water antics – even at full speed. Like the original Signature Series, the Wake Tower speakers are pushing the boundaries of what is possible on the water even further, with **unparalleled performance** in the harsh marine environment.

Precisely calculated for exceptional sound reproduction, the enclosure is designed with the exact air volume required for **premium audio at any volume** you choose to enhance your on-water experience.

A dedication to perfection and a commitment to developing new technologies – this is our mark, this is our Signature.



8.8" 330 WATT COAXIAL WAKE TOWER SPEAKERS

SG-FT88SPC - Sports Chrome with LEDs

8.8" 330 WATT COAXIAL WAKE TOWER SPEAKERS

SG-FT88SPWC - Sports Chrome & White with LEDs



ENCLOSURE DESIGN

SIGNATURE PERFORMANCE

The acoustic properties of the tower speakers have been specifically **optimized for wake boat** applications. With longer throw, greater cut through and precisely calculated enclosure volume, the wake tower speakers are designed to reproduce **crystal clear high performance audio** at all volume levels.

TRUE-MARINE™ PROTECTION

Engineered to withstand the harsh marine environment and tested to international industry standards for UV stability and salt-fog protection, all True-Marine products are also supported by a **3-year** limited consumer warranty.

IP65 WEATHERPROOF

The Signature Series wake tower speakers are rated **IP65** for water and dust ingress protection, while also meeting industry standards for **UV and salt fog protection**. This makes them perfect for tower installation on any vessel in the marine environment.

MULTIPLE MOUNTING ACCESSORIES

Fixed, swivel and deck mounting brackets and inserts are available to install. The inserts can be used to fit a wide range of tube diameters.*

PREMIUM SPORTS AESTHETIC

The Signature Series wake tower speakers incorporate premium materials and marine-specific design elements that communicate not only their premium aesthetics, but their ability to **reproduce quality audio and deliver it loud**. This results in wake tower speakers that seamlessly integrate with the design of any sports boat.

MULTIPLE MOUNTING ACCESSORIES

MOUNTING BRACKETS

Fixed, swivel and deck mounting brackets and inserts are available to install. The inserts can be used to fit a wide range of tube diameters.*

*Mounting brackets sold separately.



KEY FEATURES

Enjoy crystal clear audio customized for premium listening on a wake boat at all volume levels.



Specifically optimized for wake boat applications



Fixed, swivel and deck mounting brackets and inserts are available to install



CURV Cone Technology



Silk dome tweeter



Dual-color diffused LED lighting options



Large diameter voice coil



IP65 Ingress Protection rating



330 W peak power output



4 Ohm impedance



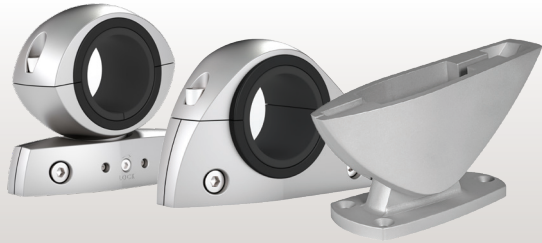
Fully sealed crossover components



High grade basket construction

SIGNATURE SERIES MOUNTING BRACKETS

**1 YEAR
WARRANTY**



UNIVERSAL SWIVEL

UNIVERSAL FIXED

DECK MOUNT

A VERSATILE, SIMPLE TO
INSTALL SOLUTION FOR
WAKE TOWER SPEAKERS

Mounting brackets and inserts are available to install your 8.8" Signature Series wake tower speakers, with either fixed, swivel or deck mounting brackets available. Inserts can be used to fit a wide range of tube diameters.

UNIVERSAL SWIVEL WAKE TOWER BRACKETS
010-12831-10

UNIVERSAL FIXED WAKE TOWER BRACKETS
010-12831-00

WAKE TOWER SPEAKER DECK MOUNT **NEW**
010-12831-20



Axis T22

KEY FEATURES



Quick and simple to install



UV stable design



Multiple insert options to fit different bar diameters



Salt fog resistant design



Stainless steel hardware

The fixed and swivel brackets are designed to securely fit a range of wake tower pipes, with inserts included to suit \varnothing 63.5mm (2.50"), \varnothing 60.3mm (2.37"), \varnothing 57.2mm (2.25"), \varnothing 50.8mm (2.00"), \varnothing 48.3mm (1.90"), \varnothing 42.2mm (1.66"), \varnothing 33.4mm (1.31") sizes.



SIGNATURE SERIES COMPONENT TWEETERS



SG-TW10

ADD ANOTHER DIMENSION TO YOUR MUSIC WITH A NEW COMPONENT TWEETER

Gone are the days where the on board audio is compromised by limited speaker placement and engine noise! Designed with the acoustics of the Signature Series speakers in mind, these component tweeters will enhance the audio reproduction when integrated with the Signature Series speakers and Fusion DSP-enabled stereos, like the Apollo Series*.

*Requires a 2 Ohm stable per channel amplifier.

KEY FEATURES



Signature compact performance



Flush mount



330 W peak power output



IP65 Ingress Protection rating



Perfect system complement



4 Ohm impedance



Sea Ray SLX 310 OB

When speakers are mounted low, close to deck height, the amount of high frequency audio that can be heard when standing is limited. Cue the compact Signature Series tweeters, for installing in higher locations to restore the high frequencies, producing an audible improvement in sound quality on board.



330 WATT COMPONENT TWEETERS
SG-TW10

XS SERIES SPEAKERS



CLASSIC WHITE

SPORTS WHITE

SPORTS GREY

CLASSIC BLACK

ACOUSTICALLY
OPTIMIZED FOR AN
EXCELLENT ON-WATER
AUDIO EXPERIENCE

Enjoy high performance acoustics on the water season after season with the **XS Series speakers**. Continuing to set the benchmark for marine audio entertainment, these full range speakers bring you **Fusion's trademark quality audio reproduction**, enhanced marine aesthetics and now RGB LED lighting, all at a mid-range price point.

Designed with performance and quality in mind, even at the highest volumes, the **XS Series** are acoustically optimized to provide an excellent audio entertainment experience out on the water.



4" 120 WATT MARINE SPEAKERS

XS-F40CWB - Classic White/Black

6.5" 200 WATT MARINE SPEAKERS

XS-FL65SPGW - Sports Grey/White with RGB LEDs

6.5" 200 WATT MARINE SPEAKERS

XS-F65CWB - Classic White/Black

7.7" 260 WATT MARINE SPEAKERS

XS-FL77SPGW - Sports Grey/White with RGB LEDs

7.7" 260 WATT MARINE SPEAKERS

XS-F77CWB - Classic White/Black

ENGINEERING AND CONSTRUCTION

ALUMINUM DOME TWEETER

The anodized aluminum dome tweeter creates a smoother upper frequency response delivering crisper, clearer highs for excellent vocals.

FULLY SEALED CROSSOVER COMPONENTS

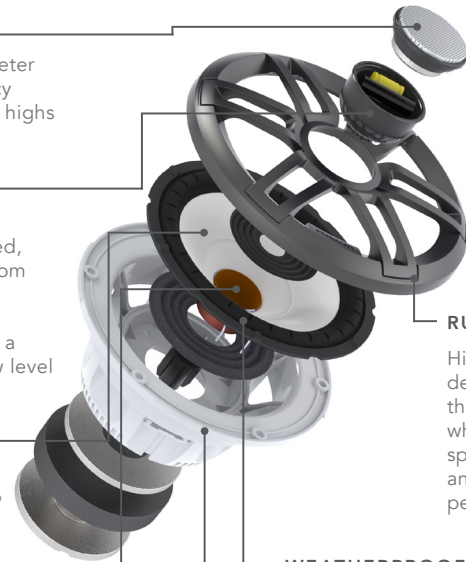
All crossover components are sealed, resulting in enhanced protection from the harsh marine environment. This delivers a smoother frequency response at the crossover point for a detailed audio spectrum and a new level of acoustic performance.

TRANSLUCENT CONE

By using a translucent, water-resistant IMPP cone, we are able to incorporate consistent multi-color illumination. It also improves the robustness of the speaker, allowing it to perform season after season in the harsh marine environment, with minimal degradation.

OVERHUNG VOICE COIL

The overhung design reduces distortion and increases power and efficiency, to deliver a truly high quality sound experience.



RUGGED GRILLES

High grade plastic grilles designed for durability in the marine environment which protects the speakers. Removable and interchangeable for personalization.

WEATHERPROOF SURROUND

By using a pleated water-resistant fabric surround, it reinforces the speaker's durability. Passing IP65 standards, ensures user's peace of mind that it will last season after season in the harsh marine environment.

OPEN BACK BASKET CONSTRUCTION

The optimized open back design allows for extended power handling and versatile mounting options. With reduced mounting depth, the speaker can be mounted in a variety of areas.



Multi-color **RGB LED lighting** is available with the Sports style speakers*. Enhance your on-water experience with illumination in any color you choose.



*LED color is determined by wiring configuration at installation. An optional RGB LED remote control is also available for full control of the illumination.

KEY FEATURES

Enhance your on-water experience with high performance audio and new lighting aesthetics.



Aluminum dome tweeter



IP65 Ingress Protection rating



Alternative grilles supplied



Designed to be installed in the FR Series mounting hole



RGB-illuminated with static and dynamic color*



260 W peak power output



4 Ohm impedance



Fully sealed crossover components



Designed to comply with ISO12216

NEW

FM SERIES SPEAKERS



ROUND BLACK ROUND WHITE SQUARE BLACK SQUARE WHITE

CLEAR AUDIO & CLEAN AESTHETICS MAKES THE FM SERIES ALL-CLASS

The new **FM Series** marine speakers are engineered to deliver quality acoustics to your vessel in a **sleek and minimalistic aesthetic** to meet the latest boat design trends. The FM Series are designed to be flush mounted with a mounting profile **no thicker than 2.5mm [3/32"]**, for a near flat finish.

Available in a **round or square** form factor, they come in **two sizes** (7.7" 200 Watt and 6.5" 120 Watt - with one size to fit a 165mm [6-1/2"] cutout and the other to fit a 138mm [5-7/16"] cutout) and also **two colors** (black or white) to meet different customers' needs.



Axopar Brabus Shadow 800



Sea Ray Sundancer 350

- 6.5" 120 WATT MARINE SPEAKERS**
FM-F65RB - Round Black
- 6.5" 120 WATT MARINE SPEAKERS**
FM-F65RW - Round White
- 6.5" 120 WATT MARINE SPEAKERS**
FM-F65SB - Square Black
- 6.5" 120 WATT MARINE SPEAKERS**
FM-F65SW - Square White
- 7.7" 200 WATT MARINE SPEAKERS**
FM-F77RB - Round Black
- 7.7" 200 WATT MARINE SPEAKERS**
FM-F77RW - Round White
- 7.7" 200 WATT MARINE SPEAKERS**
FM-F77SB - Square Black
- 7.7" 200 WATT MARINE SPEAKERS**
FM-F77SW - Square White



ENGINEERING AND CONSTRUCTION

ALUMINUM DOME TWEETER

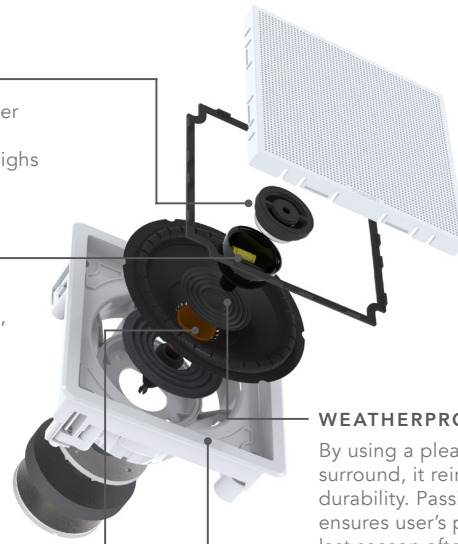
The anodized aluminum dome tweeter creates a smoother upper frequency response delivering crisper, clearer highs for excellent vocals.

FULLY SEALED CROSSOVER COMPONENTS

All crossover components are sealed, resulting in enhanced protection from the harsh marine environment. This delivers a smoother frequency response at the crossover point for a detailed audio spectrum and a new level of acoustic performance.

OVERHUNG VOICE COIL

The overhung design reduces distortion and increases power and efficiency, to deliver a truly high quality sound experience.



WEATHERPROOF SURROUND

By using a pleated water-resistant fabric surround, it reinforces the speaker's durability. Passing IP65 standards, ensures user's peace of mind that it will last season after season in the harsh marine environment.

OPEN BACK BASKET CONSTRUCTION

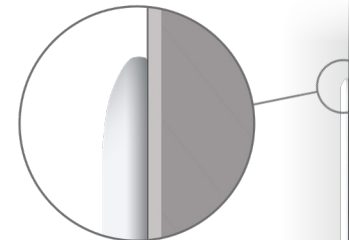
The optimized open back design allows for extended power handling and versatile mounting options.

AESTHETICS TO MEET THE LATEST BOAT DESIGN TRENDS

Designed with a minimalistic, clean look, the FM Series will fit nicely on a range of different modern boat designs. The **low profile, near-flat installation** allows for a visually appealing finish never before seen on a marine speaker. Available in a round or square form factor with two color options (black or white), the **FM Series will match the aesthetics on any vessel.**

NON-INTRUSIVE MOUNTING SYSTEM

The FM Series features an **intelligent mounting system** for a non-intrusive, easy installation. Simply place the speaker in the cutout, tighten the screws and the speaker legs will tighten against the panel, keeping it in place without the need to create any screw holes in your vessel.



2.5mm [3/32"]
MOUNTING
PROFILE



KEY FEATURES

Quality audio reproduction matched with innovative design aesthetics has created a speaker range that is all class.



Flush mount finish



Low profile design



Aluminum dome tweeter



IP65 Ingress Protection rating



120 W peak power output
(6.5" speakers)



200 W peak power output
(7.7" speakers)



4 Ohm impedance



Designed to comply
with ISO12216

EL SERIES SPEAKERS

1 YEAR
WARRANTY



CLASSIC WHITE

CLASSIC BLACK

SPORTS GREY



Stingray 182SC

ENERGIZE YOUR BOATING EXPERIENCE WITH THE NEW EL SERIES SPEAKERS

Enhance your time spent on the water with quality audio and **RGB LED illumination** to set the tone. Providing more installation options than traditional speakers, the extremely versatile next-generation **EL Series** speakers are designed with a shallow basket which allows them to fit in where many other speakers will not.

KEY FEATURES



Shallow basket design



IP65 Ingress Protection rating



150 W peak power output



4 Ohm impedance



UV stable and salt fog resistant design



Designed to comply with ISO12216



RGB-illuminated with static and dynamic color*



Multi-color **RGB LED lighting** is available with the Sports style speakers*. Energize your on board experience with lighting in any color you choose.



6.5" 150 WATT MARINE SPEAKERS

EL-F651W - Classic White

6.5" 150 WATT MARINE SPEAKERS

EL-F651B - Classic Black

6.5" 150 WATT MARINE SPEAKERS

EL-FL651SPG - Sports Grey with RGB LEDs

6.5" SPORTS WHITE MARINE GRILLES

EL-X651SPW - SPORTS WHITE

*LED color is determined by wiring configuration at installation. An optional RGB LED remote control is also available for full control of the illumination.

SOUND-PANEL

1 YEAR WARRANTY



RV-FS402B

RV-FS402W

FUSION'S MOST VERSATILE, SIMPLE TO INSTALL SPEAKER SOLUTION

Finally, the age-old problem of achieving professional-quality sound from a shallow mount speaker has been solved! Now there's no need to compromise on either your mounting options or sound quality, as the **Sound-Panel** delivers on every front.

Outstanding audio quality from a shallow form factor is achieved through the combination of two 4" speaker drivers, two soft-dome tweeters and a large surface passive radiator, all in a perfectly tuned enclosure with a maximum mounting depth of only 41mm (1-5/8").



KEY FEATURES



Quick and simple to install



IP65 Ingress Protection rating



200 W peak power output



4 Ohm impedance



Silk dome tweeter



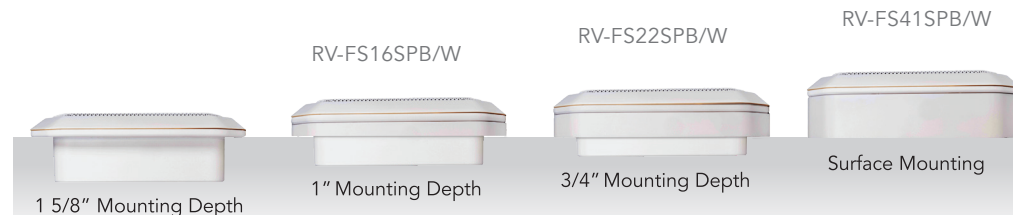
Tuned, sealed enclosure with a passive bass radiator



Salt fog resistant design

With only a 41mm (1-5/8") maximum depth required for flush installation, the Sound-Panel can be installed in most locations where standard speakers are too deep.

Optional mounting spacers are available to create a professional finish in both **indoor or outdoor installations** at either 1" or 3/4" mounting depths. By using the 41mm (1-5/8") spacer the Sound-Panel can be installed directly onto any flat surface with no mounting cut-out required.



NEW

SM SERIES SPEAKERS

**1 YEAR
WARRANTY**



SM-F65CW

SM-F65CB



SHALLOW MOUNT DESIGN AND QUALITY AESTHETICS

With a shallow mounting depth of just 24mm [15/16"], the **SM Series** are ideal for installation where mounting depth is limited, without compromising sound quality and performance normally associated with restrictive mounting depths. Specifically designed with a sealed, **perfectly-tuned enclosure** to deliver quality audio reproduction that could normally not be achieved with a standard speaker of similar size in the same location.

KEY FEATURES



Shallow basket design



4 Ohm impedance



100 W peak power output



IP65 Ingress Protection rating



Interior design aesthetic

The sealed enclosure design protects all components from damage making the SM Series capable of being installed in positions such as cabinets **without needing rear speaker cups** that often reduce sound quality and complicate installation. The SM Series has three optional accessory mounting spacers to support installations in various positions.



Three corner spacer

Two corner spacer

Surface spacer

6.5" 100 WATT MARINE SPEAKERS

SM-F65CW - White

6.5" 100 WATT MARINE SPEAKERS

SM-F65CB - Black

OPTIONAL MOUNTING SPACERS*

SM-X65SPB/W - Surface mounting spacer

SM-X65SP2B/W - Two surface corner spacer

SM-X65SP3B/W - Three surface corner spacer

*Mounting spacers sold separately

TRUE-MARINE SERIES



MS-FR4021

MS-FR6021/6022

MS-FR7021/7022

QUALITY ON-WATER AUDIO ENTERTAINMENT SEASON AFTER SEASON

Enjoy quality audio that you can trust to last season after season. Providing sustained high performance during exposure to the marine elements, the **True-Marine speakers** combine innovations and materials to produce fantastic sound while resisting the environment.



Tristram 741 Offshore

KEY FEATURES



IP65 Ingress Protection rating



Alternative grilles supplied



Titanium dome tweeter



4 Ohm impedance



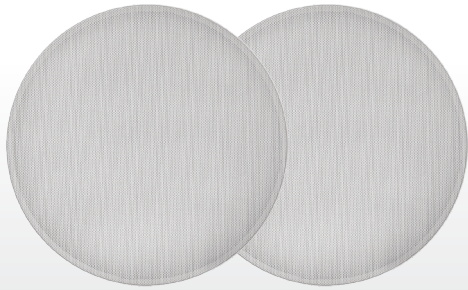
CURV Cone Technology



- 4" 120 WATT 2-WAY SPEAKERS**
MS-FR4021
- 6" 200 WATT 2-WAY SPEAKERS**
MS-FR6021
- 7" 260 WATT 2-WAY SPEAKERS**
MS-FR7021

- 6" 200 WATT 2-WAY SPEAKERS**
MS-FR6022*
- 7" 260 WATT 2-WAY SPEAKERS**
MS-FR7022*

*Available in USA only.



IN-CEILING SPEAKERS

1 YEAR WARRANTY

MS-CL602

ELEGANT & DISCREET TO COMPLEMENT THE INTERIOR OF ANY VESSEL

The discreet, stylized flush mount profile provides a simple, elegant solution for in-cabin audio. Designed to blend in with your vessel's interior, these speakers are perfect for either in-ceiling or wall mount installation.



Riviera 68 Sports Motor Yacht

KEY FEATURES



6" 2-way full range speaker



Discreet flat mount profile



120 W peak power



6 Ohm impedance



Silk dome tweeter



BOX SPEAKERS

1 YEAR WARRANTY

MS-OS420

EXTREMELY VERSATILE AND OPTIMIZED FOR THE MARINE ENVIRONMENT

Add to your boating experience with quality audio, even on boats where fitting standard speakers is not an option, with versatile box speakers.

Enjoy peace of mind and install your **MS-OS420** speakers with confidence that they will last the test of time on board. Great for helms that are already crowded with instruments, they are also perfect for alloy boats where a flush mount speaker is not practical. An affordable, value-for-money solution for any vessel, the MS-OS420 speakers feature fully adjustable mounting brackets for versatile installation options.



Rayglass 3500

KEY FEATURES



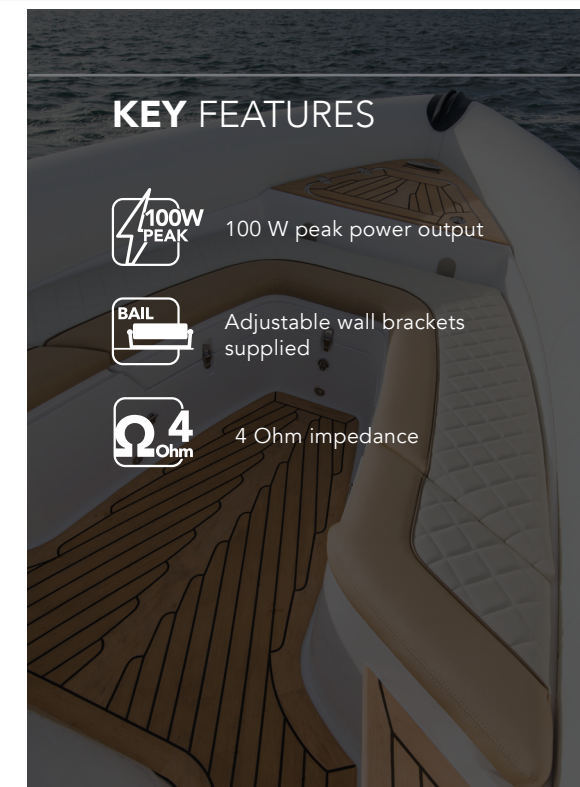
100 W peak power output



Adjustable wall brackets supplied



4 Ohm impedance





MARINE SUBWOOFERS

SIGNATURE SERIES



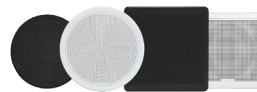
Signature Series
Subwoofers

XS SERIES



XS Series
Subwoofers

FM SERIES



FM Series
Subwoofers

TRUE-MARINE



True-Marine
Subwoofer

SIGNATURE SERIES SUBWOOFERS



SPORTS WHITE

CLASSIC WHITE

SPORTS CHROME

ENHANCE YOUR
ON-WATER EXPERIENCE
WITH PREMIUM LOW
FREQUENCIES

Take your boating experience to another level with comprehensive low frequencies. Delivering an increase in **real power and efficiency** to add another dimension to your music, the large diameter voice coil produces a signature sound exclusive to these 10" subwoofers.

Engineered with an impressive 450 Watt peak power output, the **Signature Series subwoofers are designed to deliver premium bass to your vessel**, allowing you to add low end frequencies and experience the full audio experience on board.



Streamline 45

10" 450 WATT MARINE SUBWOOFER

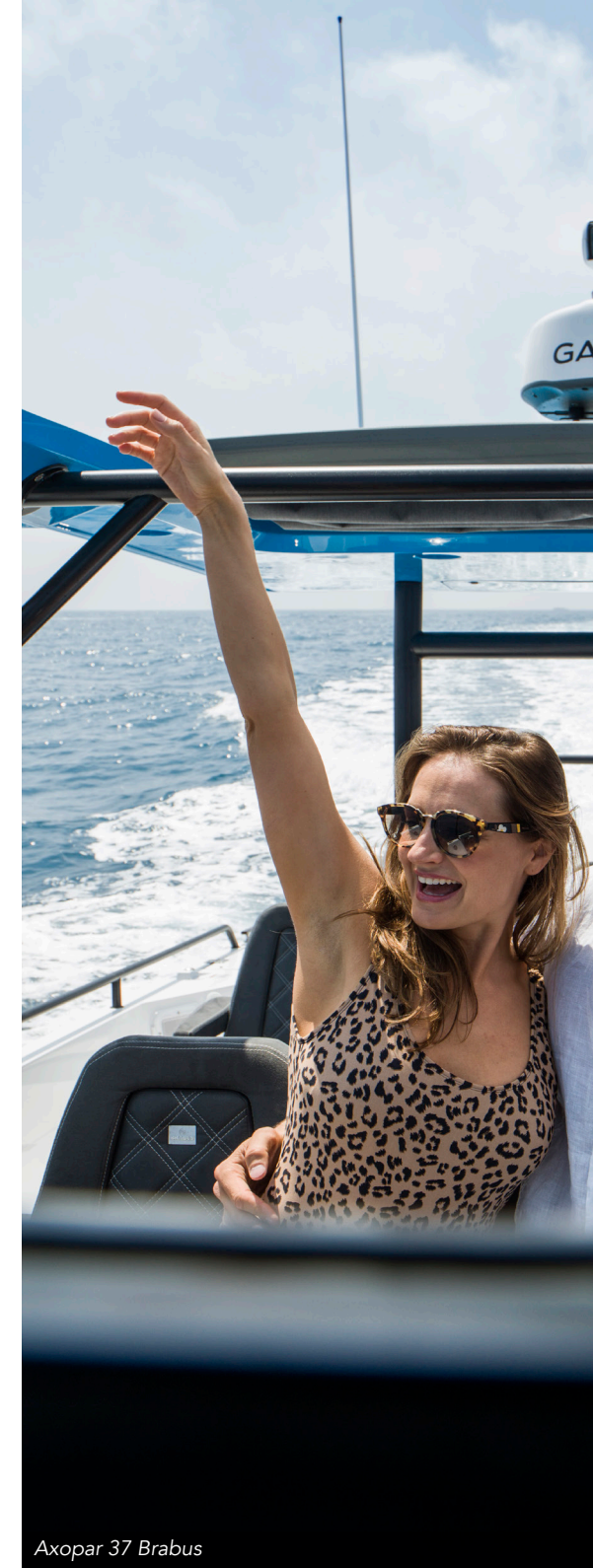
SG-S10W - Classic White

SG-SL101SPW - Sports White with LEDs

SG-SL101SPC - Sports Chrome with LEDs

CLASSIC BLACK GRILLE

SG-X10B - Classic Black marine grille



Axopar 37 Brabus



STYLE THAT MATCHES ANY BOAT

Available in **Classic White, Sports White or Sports Chrome subwoofers**, the Sports Style subwoofers feature stunning **dual-color diffused LED lighting** which illuminate Striking Blue or Sparkling White, to enhance your boating experience with premium aesthetics.



SG-VREGLED LED VOLTAGE REGULATOR

Enjoy a harmonious illumination throughout your vessel, switch between color options and adjust the brightness, all with the **SG-VREGLED** voltage regulator installed on board. Installation is simple, with the small form factor allowing for discreet placement where it is best suited.



Jupiter 38 HFS

KEY FEATURES

Exceptional mechanical design and acoustic engineering have created a fully featured subwoofer range. It is what the Power of Music is made of.



Fibreglass-paper composite cone



Dual-color diffused LED lighting options (Sports style only)



Large diameter voice coil



IP65 Ingress Protection rating



450 W peak power output



4 Ohm impedance



High grade basket construction



Designed to comply with ISO12216

XS SERIES SUBWOOFERS



CLASSIC WHITE

SPORTS WHITE

SPORTS GREY

CLASSIC BLACK

ADD ANOTHER DIMENSION TO YOUR BOATING WITH QUALITY BASS

Enjoy Fusion's trademark quality audio reproduction, enhanced marine aesthetics and now RGB LED lighting, all at a mid-range price point with the **XS Series subwoofers**. Built for versatility and ease of integration, you have the option of creating a 2.1 audio zone to simplify installation and **reduce your system cost** with an easy way to add bass on board without the need for an external amplifier (with a compatible Fusion stereo system).



Stingray 215LR

KEY FEATURES



IP65 Ingress Protection rating



400 W peak power



Designed to comply with ISO12216



4 Ohm impedance



RGB-illuminated speaker cone
Note: Sports style only



Alternative grilles supplied



RGB-illuminated with static and dynamic color*

Set the tone on board with brighter, more even **RGB LED illumination** from the Sports style subwoofer's innovative cone*. A range of colors are available to further enhance your boating experience.

The stylish grilles complement your on-board aesthetics and provide the freedom to choose the finish to suit your vessel, with **two color options included** in the box.



10" 400 WATT MARINE SUBWOOFER

XS-S10CWB - Classic White/Black

XS-SL10SPGW - Sports Grey/White with RGB LEDs

*LED color is determined by wiring configuration at installation. An optional RGB LED remote control is also available for full control of the illumination.

NEW

FM SERIES SUBWOOFERS



ROUND BLACK ROUND WHITE SQUARE BLACK SQUARE WHITE

QUALITY BASS WITH INNOVATIVE DESIGN AESTHETICS

Enhancing your boating experience with quality bass, the **FM Series subwoofers** are designed to deliver Fusion's trademark quality audio reproduction, with **sleek and minimalistic aesthetics** that meets the latest boat design trends. Featuring an innovative, low-profile flush mount installation system, you have the option of adding a subwoofer with a premium, **near-flat finish**.



Axopar 28 Open

KEY FEATURES

- IP65 Ingress Protection rating
- 400 W peak power
- Designed to comply with ISO12216
- 4 Ohm impedance
- Flush mount
- Low profile design

With a **mounting profile of only 3mm [1/8]**, enjoy a visually appealing finish never before seen on a marine subwoofer. The innovative, non-intrusive mounting system allows for easy installation without the need to create any screw holes in your vessel.



10" 400 WATT MARINE SUBWOOFER
FM-S10RW - Round White
FM-S10RB - Round Black
FM-S10SW - Square White
FM-S10SB - Square Black



TRUE-MARINE SUBWOOFER



MS-SW10

BOOST YOUR ON-BOARD SOUND QUALITY WITH THE TRUE-MARINE SUBWOOFER

Boost your boating experience by increasing the overall quality and bass level of your audio on the water **season after season**, with a water resistant **True-Marine™ subwoofer**. Delivering a 400 Watt peak power output, the MS-SW10 will add quality low end frequencies to enhance your on board audio.



Tristram 741 Offshore

KEY FEATURES



10" diameter



Water resistant design



400 W peak power



4 Ohm impedance



10" 400 WATT TRUE-MARINE SUBWOOFER
MS-SW10 - Classic White





MARINE AMPLIFIERS

SIGNATURE SERIES



Signature Series Amplifiers

AM SERIES



AM Series Amplifiers

OTHER AMPLIFIERS



Zone Amplifier

SIGNATURE SERIES AMPLIFIERS



SG-DA12250

SG-DA41400

SG-DA51600

SG-DA61500

SG-DA82000

OUR MOST STUNNING,
EFFICIENT AND POWERFUL
MARINE AMPLIFIERS FOR
THE ULTIMATE AUDIO
EXPERIENCE

THE POWER OF MUSIC

The power of music is unquestionable. Enhance your boating experience with a new level of audio entertainment by installing a **Signature Series amplifier** on board.

TRUE-MARINE™ DESIGN

Enjoy peace of mind that your amplifier will perform season after season with the stainless steel front panel to resist corrosion, and conformal coated circuitry to protect the components from salt fog, moisture and humidity. Carrying **True-Marine™** accreditation, these amplifiers also hold an **industry-leading 3-year warranty**.



Riviera 77 Enclosed Flybridge

1400 WATT CLASS-D MARINE AMPLIFIER

SG-DA41400 - 4 channel

1600 WATT CLASS-D MARINE AMPLIFIER

SG-DA51600 - 5 channel

2250 WATT CLASS-D MARINE AMPLIFIER

SG-DA12250 - Monoblock

1500 WATT CLASS-D MARINE AMPLIFIER

SG-DA61500 - 6 channel

2000 WATT CLASS-D MARINE AMPLIFIER

SG-DA82000 - 8 channel



Riviera 77 Enclosed Flybridge



CLASS-D AMPLIFIER TECHNOLOGY

Ensuring low current draw from the battery while delivering increased power, the highly efficient **Class-D** design make the **Signature Series** perfect for boating environments.

RIGID ALUMINUM ALLOY HEAT SINK



For increased efficiency without compromising the form factor, the **Signature Series** amplifier range features a rigid aluminum alloy heat sink. **Greater dissipation of heat and unquestionable efficiency** is achieved by molded fins forming a singular die-cast chassis, with the layout precisely calculated to increase the surface area of the heat sink.



Regal 33 Express

KEY FEATURES

World-class design and engineering has resulted in an extremely efficient and powerful marine amplifier range featuring:

-  Class-D amplification for higher efficiency and output
-  Rigid aluminum heat sink
-  2 Ohm stereo stable
-  Variable bass boost
-  Subsonic filter
-  Variable low & high pass crossover filters
-  Stainless steel front panel with a mirror finish
-  Conformal coated PCBs for marine protection

AM SERIES AMPLIFIERS

1 YEAR
WARRANTY



MS-AM504

MS-AM402

VALUE-PACKED & PURPOSE-
BUILT FOR QUALITY AUDIO
AMPLIFICATION ON THE WATER

Enhance your on-water experience with quality audio amplification. You can relax knowing the value-packed **AM Series** boast some of the most impressive environmental protection available for marine amplifiers.

400 WATT CLASS-AB MARINE AMPLIFIER
MS-AM402 - 2 channel

500 WATT CLASS-AB MARINE AMPLIFIER
MS-AM504 - 4 channel

KEY FEATURES



Class-AB amplifier technology



Subsonic filter



2 Ohm stereo stable



Variable bass boost



Variable low & high pass
crossover filters



Stabicraft 2500 XL

The **MS-AM402** will drive a subwoofer, an extra pair of speakers, or even four speakers (with two speakers in parallel in each channel at 2 Ohms).

The **MS-AM504** will drive a pair of Fusion speakers plus a 10" subwoofer, or up to four pairs of Fusion speakers (with two speakers in parallel in each channel at 2 Ohms), to help spread quality sound around your vessel.



ZONE AMPLIFIER



MS-AM702

ADD AMPLIFICATION TO ANY ZONE THROUGHOUT YOUR VESSEL

Boost any audio zone on board with a compact Class-D zone amplifier. Enjoy peace of mind that your **MS-AM702** will last the test of time with an **IPX5 water resistant** sealed chassis and True-Marine™ accreditation. Ideal for the marine environment, the **Class-D amplification** ensures efficient output and low current draw.

140 WATT CLASS-D MARINE ZONE AMPLIFIER

MS-AM402 - 2 channel



Bavaria 29

KEY FEATURES



IPX5 Ingress Protection rating



2 Ohm stereo stable



Class-D amplifier design for higher efficiency and output



2 channels



140 W peak power





ACCESSORIES

MARINE ACCESSORIES



ARX REMOTE



WIRED REMOTE



RCA CONNECTORS



DAB+ MODULE



RGB REMOTE



FLUSH MOUNT KITS



RETROFIT KITS



Bluetooth®
MODULE



AUXILIARY & USB

STEREOACTIVE ACCESSORIES



FUSION PUCK



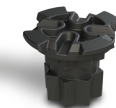
FUSION FLEXI
PUCK



FUSION STRAP
PUCK



CAR CHARGER



FUSION
RAILBLAZA PUCK



FUSION RAM
MOUNT PUCK



USB 2.0
FLASH DRIVE



ARX REMOTE

1 YEAR
WARRANTY

MS-ARX70B

MS-ARX70W

EASY INSTALLATION
WITH EFFORTLESS
ENJOYMENT

Retrofit your Fusion ANT®-enabled system with the **MS-ARX70** ANT remote to enjoy the freedom and convenience of wireless audio control from anywhere around your boat. Control of your music is within reach any time, anywhere with the ARX remote. Rated both IPX6 and IPX7 water resistant, the remote is perfect for the swim platform, bow, transom or anywhere you want quick access to audio adjustments. Including an impressive typical 3-year battery life, on-board audio control has never been so easy.

This remote can be used across a variety of **Fusion ANT** enabled products including the **Apollo RA770**, **Apollo RA670**, **Panel-Stereo**, **70 Series**, **MS-RA210**, **MS-BB100** and **StereoActive**.



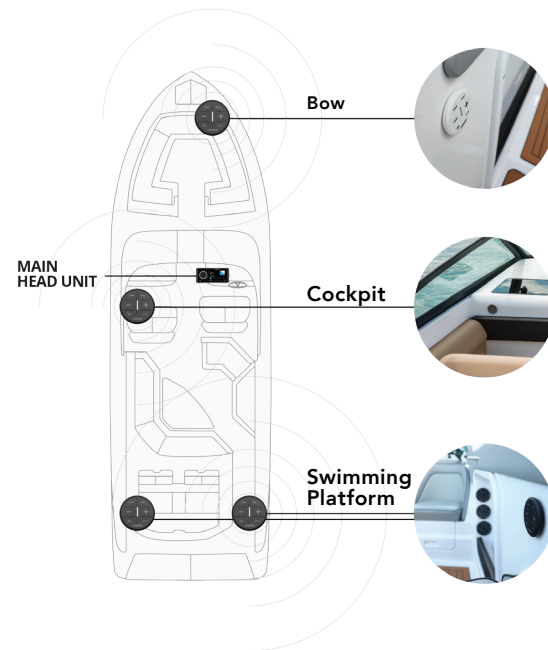
ANT WIRELESS STEREO REMOTE

MS-ARX70B - Black

ANT WIRELESS STEREO REMOTE

MS-ARX70W - White





EASY TO USE

Your options are endless when it comes to remote placement. Rubberized tactile buttons and an LED light bar make use easy in any area, both indoors and outdoors.

STYLISH DESIGN

Place the stylish, low profile ARX remote where it is most convenient to make getting up to change the song a thing of the past.

WATER RESISTANT

With both IPX6 and IPX7 water resistance ratings, the ARX remote is perfect for easy audio control in any area - including the swimming platform!

MULTI-ZONE™ CONTROL

Create multiple independent audio zones with Fusion's Multi-Zone™ technology built into Fusion stereos. The **ARX70** can interface with compatible Fusion stereos and control the audio in all zones, for complete convenience. Switching zones is easy, simply press the + and - keys at the same time, then press the key that represents the zone you wish to control. For more control options on board than ever before, **multiple ARX remotes can be installed** across the boat, with one or more in each zone.

The ARX70 is **simple and easy to use**, even in both wet and low light conditions with rubberized tactile buttons and a light-bar. The LED lights in the light-bar provide essential user feedback as you control your audio playback.



KEY FEATURES

Clever design and engineering has created an intuitively simple and convenient wireless remote control featuring:

-  IPX7 Ingress Protection rating
-  IPX6 Ingress Protection rating
-  ANT wireless technology
-  Surface mounting
-  Easy to install
-  Easily replaceable battery with up to three year battery life
-  Low profile design
-  Rubberized tactile buttons
-  Control up to 4 audio zones

WIRED REMOTE



MS-NRX300

LOCALIZED AUDIO CONTROL FROM ANY ZONE ON BOARD

Take control of your audio entertainment and enjoy localized control from any audio zone on your boat. A perfect solution for audio control around your vessel, the **MS-NRX300** features a certified NMEA 2000® connector for quick connection to existing networks and **Fusion-Link™** access. With **IPX7 water resistance** and **True-Marine™ accreditation**, you can relax knowing that your remote is built to last on board.



Maritimo 500

KEY FEATURES



2.6" display



Quick and simple to install



Flush mounting option

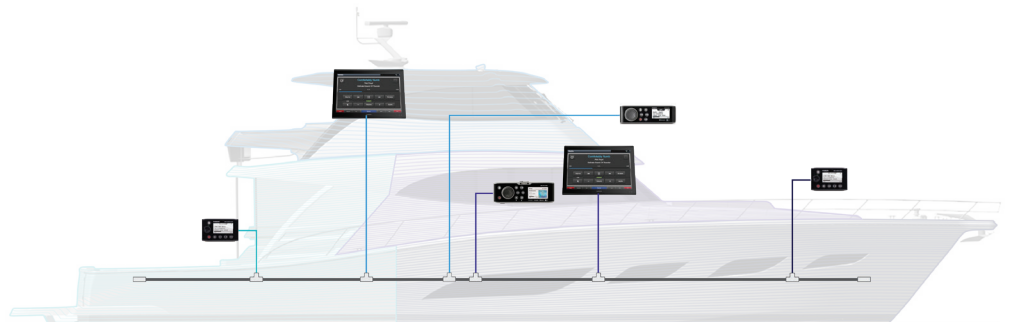


IPX7 Ingress Protection rating



Flat mounting option

Save time and money with quick and easy installation of your **MS-NRX300** wired remote. Certified for connection to any **NMEA 2000** network, the remote will double as a NMEA 2000 repeater and display supported NMEA data from compatible marine electronics.



NEW

RCA CABLES



RCA CABLES & SPLITTERS

PERFORMANCE AUDIO INTERCONNECT CABLES

Make the most of a cleaner, clearer, **enhanced audio signal** to your amplifier with Fusion's range of RCA connector cables. Our performance cables feature directional, shielded twisted pair cabling providing **superior noise rejection**. Ensuring the cable lasts season after season, the performance RCA connectors are gold-plated to prevent corrosion, while the standard RCA connectors are nickel-plated.

KEY FEATURES



Superior noise-rejection (performance cables only)



Color coded connectors



Gold-plated connectors (performance cables only)



PERFORMANCE RCA CABLES

- MS-RCA3 1 Zone / 2 Channel 3ft (0.9m)
- MS-RCA6 1 Zone / 2 Channel 6ft (1.83m)
- MS-RCA12 1 Zone / 2 Channel 12ft (3.66m)
- MS-RCA25 1 Zone / 2 Channel 25ft (7.62m)
- MS-FRCA6 2 Zone / 4 Channel 6ft (1.83m)
- MS-FRCA12 2 Zone / 4 Channel 12ft (3.66m)
- MS-FRCA25 2 Zone / 4 Channel 25ft (7.62m)
- MS-RCAYM RCA splitter cable female to dual male
- MS-RCAYF RCA splitter cable male to dual female

STANDARD RCA CABLES

- EL-RCA3 1 Zone / 2 Channel 3ft (0.9m)
- EL-RCA6 1 Zone / 2 Channel 6ft (1.83m)
- EL-RCA12 1 Zone / 2 Channel 12ft (3.66m)
- EL-RCA25 1 Zone / 2 Channel 25ft (7.62m)
- EL-FRCA6 2 Zone / 4 Channel 6ft (1.83m)
- EL-FRCA12 2 Zone / 4 Channel 12ft (3.66m)
- EL-FRCA25 2 Zone / 4 Channel 25ft (7.62m)
- EL-RCAYM RCA splitter cable female to dual male
- EL-RCAYF RCA splitter cable male to dual female



MS-DAB100A

DAB+ MODULE WITH ACTIVE ANTENNA

Simply connect the **DAB+ module** and antenna to a compatible Fusion stereo to enjoy the added functionality of digital radio.

NOTE: Stereo not included. A software upgrade may be required to activate the DAB source. DAB+ is supported in UK, Norway, Switzerland, Australia and other countries.



MULTIPLE MOUNTING OPTIONS

The antenna features two mounting options for easy installation onto any vessel. Mounting options include:

Standard 1" Pole Mount

To pole mount the antenna use either the included 1 inch outer diameter threaded mounting bracket, or a user-supplied pole mount. The included mounting bracket comes with four mounting screws that secure the base to the mounting surface.

Surface Mounting

To surface mount the antenna use either the included double sided adhesive pad, or utilize the included threaded rods with thumb screws for easy installation.

ON-SCREEN STATION INFORMATION

The connected Fusion stereo will display Station, Ensemble, Program Type, Category and Dynamic Label Segment (DLS) information for easy recognition and searching of Digital Radio Stations.



MS-RGBRC

WIRELESS REMOTE & SPEAKER LIGHTING CONTROL MODULE



WIRELESS REMOTE CONTROL

Enjoy full control of the illumination option and functions of your Fusion RGB speakers with the **MS-RGBRC** wireless remote control. For total convenience, the remote is portable and is able to function up to 10m from the speaker lighting control module.

CONTROL THE LED ILLUMINATION

Enhance your on-water experience with the ability to adjust your Fusion RGB speaker lighting. Set the tone or match your music by selecting your **color, brightness, mode and speed**, to take your entertainment experience to the next level. Up to three separate lighting zones can be controlled by one remote.

Note: For control of additional lighting zones, additional speaker lighting control modules must be purchased.

STATIC AND DYNAMIC COLOR OPTIONS

Complement your music and enhance your on board entertainment with the ability to select both **static and dynamic color modes** in a range of colors. 16 speed options are available with a wide range of colors to choose from to suit any mood or occasion.

INTUITIVE TOUCH CONTROL

Easily adjust the lighting on your Fusion RGB speakers with the intuitive color select wheel and **easy to use** touch controls.

NEW



FLUSH MOUNT KIT

FLUSH MOUNT KITS

Seamlessly integrate your stereo into the helm with a flat finish using the Front Flush Mount Kit.



MS-RA770 FLUSH MOUNT KIT

Use the MS-RA770 Front Flush Mount Kit to install your Apollo stereo into the helm with a premium flat finish.

010-12817-00
MS-RA770 Front Flush mount kit



APOLLO RA670 AND MS-RA210 FLUSH MOUNT KIT

Use the Front Flush Mount Kit to install your Apollo RA670 or MS-RA210 stereo into the helm with a premium flat finish.

010-12817-02
MS-RA670 / MS-RA210 Front Flush mount kit



MS-SRX400 FLUSH MOUNT KIT

Use the MS-SRX400 Front Flush Mount Kit to install your Apollo stereo into the helm with a premium flat finish.

010-12830-00
MS-SRX400 Front Flush mount kit

NEW



RETROFIT KITS

FUSION STEREO RETROFIT KITS

Integrate and add protection to your marine stereos with the Retrofit Kit for MS-RA770, MS-RA670 and MS-RA210.



Integrate your Apollo RA670 or MS-RA210 marine stereo seamlessly into an existing Fusion 755 Series, 750 Series or 650 Series cutout with the Adapter Plate Kit.

010-12829-03
Adapter plate kit with dust cover
010-12745-01
MS-RA670 / MS-RA210 Marine stereo dust cover



Integrate your Apollo RA770 marine stereo seamlessly into an existing Fusion 755 Series, 750 Series or 650 Series cutout with the MS-RA770 Retrofit Kit.

010-12829-00
MS-RA770 Retrofit kit with dust cover



The dust cover is shaped to perfectly fit your Apollo RA770 when installed using the retrofit kit, accommodating the larger screw covers.

010-12743-00
MS-RA770 Marine stereo dust cover



MS-BT100

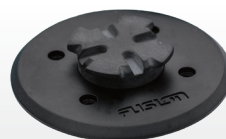
BLUETOOTH® MODULE

Enjoy **Bluetooth® audio streaming** from a compatible Bluetooth enabled device with the addition of an **MS-BT100 module**. Simply connect to the auxiliary input to enable control directly from the paired Bluetooth device within the effective range of 10 metres (33 feet).

Compatible with any stereo with an RCA AUX input.



FUSION PUCK



WS-PKFL

STANDARD MOUNTING SOLUTION

The standard puck system allows for fixed puck placement on flat surfaces with either an adhesive pad or mounting screws.

- EASY INSTALLATION
- COMES WITH A PUCK COVER

MOUNTING SOLUTIONS FOR THE STEREOACTIVE & ACTIVESAFE

The range of Fusion puck accessories is designed to securely mount your **StereoActive** or **ActiveSafe** to the surface of a paddleboard, kayak, canoe, dinghy/jon boat/tinny, and even a jacuzzi, leaving you to enjoy your music without worrying about your stereo floating away.

The directional mount system allows you to face the **StereoActive** in four directions.



FUSION FLEXI PUCK

WS-PKFM

FLEXIBLE MOUNTING SOLUTION



FUSION STRAP PUCK

WS-PKTD

STRAP MOUNTING SOLUTION



CAR CHARGER

WS-SACLA

12 VOLT CAR CHARGER



FUSION RAILBLAZA PUCK

WS-PKBLZ

RAILBLAZA MOUNT ADAPTER SOLUTION



FUSION RAM MOUNT PUCK

WS-PKRAM

RAM MOUNT ADAPTER SOLUTION



USB 2.0 FLASH DRIVE

MS-USB16

16GB USB 2.0 LOW PROFILE FLASH DRIVE



MS-CBUSB3.5

AUXILIARY & USB

PANEL MOUNT AUX 3.5MM & USB CONNECTOR

Providing more audio options for your on-water entertainment, the **MS-CBUSB3.5** can be installed on the dash or wherever it is most convenient for easy USB port access.



ENTERTAINMENT SYSTEM COMPARISON

NOTE: All full range and subwoofer line outs require external amplification.
 ** An external router is required for Wi-Fi connectivity.



MS-RA770



MS-RA670



MS-SRX400



MS-RA70



**MS-RA70N
MS-RA70NSX**

SPECIFICATIONS

PEAK POWER	280 W (4x70 W)	280 W (4x70 W)	140 W (2x70 W)	200 W (4x50 W)	200 W (4x50 W)
AMPLIFIER	Class-D	Class-D	Class-D	Class-AB	Class-AB
MULTI-ZONE TECHNOLOGY	4 zones	3 zones	No	2 zones	2 zones
DISPLAY	4.3" optically bonded color LCD touchscreen	2.7" optically bonded color LCD	2.7" optically bonded color LCD	128x64 optically bonded monochrome LCD	128x64 optically bonded monochrome LCD
LINE OUT	4 (1 x L + R per zone)	3 (1 x L + R per zone)	1 (1 x L + R)	2 (1 x L + R per zone)	2 (1 x L + R per zone)
SUBWOOFER OUT	4 (1 per zone)	3 (1 per zone)	1 (mono output)	1 (zone 1)	1 (zone 1)
AUXILIARY INPUTS	2 x RCA inputs	1 x RCA input	No	1 x RCA input	1 x RCA input

SOURCES

TUNER	AM/FM with RDS (where available)	AM/FM with RDS (where available)	AM/FM with RDS (where available)	AM/FM with RDS (where available)	AM/FM with RDS (where available)
BUILT-IN WI-FI	Yes	No	Yes	No	No
iPod/iPhone	Yes	Yes	No	Yes	Yes
ANDROID/WINDOWS MTP SUPPORT	Yes	Yes	No	No	No
AOA SUPPORT	Yes	Yes	Yes	Yes	Yes
USB	Yes - 1 connection	Yes - 1 connection	No	Yes - 1 connection	Yes - 1 connection
BLUETOOTH® WIRELESS TECHNOLOGY	Yes	Yes	Yes	Yes	Yes
SIRIUSXM READY	Yes (continental US & Canada only)	Yes (continental US & Canada only)	No	No	MS-RA70NSX only (continental US & Canada only)
DVD/CD VIA hdmi CONNECTION	No	No	No	No	No
DVD/CD VIA COMPOSITE & COMPONENT CONNECTIONS	No	No	No	No	No
AUDIO RETURN CHANNEL (ARC)	No	No	No	No	No
OPTICAL AUDIO INPUT	Yes	Yes	No	No	No
DAB+ READY	Yes	Yes	No	Yes	MS-RA70N only

CONNECTIVITY

FUSION-LINK VIA NMEA 2000	Yes	Yes	No	No	Yes
FUSION-LINK VIA ETHERNET/WI-FI	Yes	Yes**	Yes	No	No
FUSION-LINK VIA BLUETOOTH	Yes	Yes	Yes	Yes	Yes
FUSION-LINK VIA ANT TECHNOLOGY	Yes	Yes	No	Yes	Yes

MECHANICAL DESIGN

WATER RESISTANCE (IPX RATING)	IPX7 front panel	IPX6 & IPX7 front panel	IPX7 front panel	IPX7 front panel	IPX7 front panel
CHASSIS	Electrically isolated impact resistant plastic	Electrically isolated impact resistant plastic	Electrically isolated impact resistant plastic	Glass reinforced composite	Glass reinforced composite
MOUNTING OPTIONS	Flush & flat	Flush & flat	Flush & flat	Flush & flat	Flush & flat
WARRANTY	3 years	3 years	3 years	1 year	1 year



MS-RA210



MS-RA55



MS-BB300R



MS-BB100



**PS-A302B
PS-A302BOD**



WS-SA150W/B/R

SPECIFICATIONS

PEAK POWER	200 W (4x50 W)	180 W (4x45 W)	200 W (4x50 W)	200 W (4x50 W)	140 W	40 W (2x20 W)
AMPLIFIER	Class-D	Class-AB	Class-AB	Class-AB	Class-D	Class-D
MULTI-ZONE TECHNOLOGY	2 zones	2 zones	3 zones	2 zones	No	No
DISPLAY	2.7" optically bonded color LCD	2.3" monochrome LCD	MS-NRX300 remote with 2.6" optically bonded LCD	No	No	No
LINE OUT	2 (1 x L + R per zone)	1 (1 x L + R zone 1)	1 (1 x L + R zone 3)	2 (1 x L + R per zone)	1 x RCA output	No
SUBWOOFER OUT	2 (1 per zone)	No	1 (zone 3)	1 (zone 1)	No	No
AUXILIARY INPUTS	1 x RCA input	1 x RCA input	2 x RCA inputs	1 x RCA input	2 x RCA inputs	No

SOURCES

TUNER	AM/FM with RDS (where available)	AM/FM with RDS (where available)	AM/FM with RDS (where available)	AM/FM with RDS (where available)	AM/FM	AM/FM
BUILT-IN WI-FI	No	No	No	No	No	No
iPod/iPhone	Yes	No	Yes	Yes	Yes	Yes
ANDROID/WINDOWS MTP SUPPORT	Yes	No	Yes	No	No	No
AOA SUPPORT	Yes	No	Yes	Yes	Yes	Yes
USB	Yes - 1 connection	No	Yes - 1 connection	Yes - 1 connection	Yes - 1 connection	Yes - 1 connection
BLUETOOTH WIRELESS TECHNOLOGY	Yes	Yes	Yes	Yes	Yes	Yes
SIRIUSXM READY	Yes (continental US & Canada only)	No	Yes (continental US & Canada only)	No	No	No
DVD/CD VIA hdmi CONNECTION	No	No	No	No	No	No
DVD/CD VIA COMPOSITE & COMPONENT CONNECTIONS	No	No	No	No	No	No
AUDIO RETURN CHANNEL (ARC)	No	No	No	No	No	No
OPTICAL AUDIO INPUT	No	No	No	No	No	No
DAB+ READY	Yes	No	Yes	Yes	No	No

CONNECTIVITY

FUSION-LINK VIA NMEA 2000	Yes	No	Yes	Yes	No	No
FUSION-LINK VIA ETHERNET/WI-FI	No	No	No	No	No	No
FUSION-LINK VIA BLUETOOTH	Yes	No	No	Yes	Yes	Yes
FUSION-LINK VIA ANT TECHNOLOGY	Yes	No	No	Yes	Yes	Yes

MECHANICAL DESIGN

WATER RESISTANCE (IPX RATING)	IPX6 & IPX7 front panel	IPX5 front panel	IPX3 Black Box with IPX7 MS-NRX300 remote	IPX3 Black Box with IPX7 remote	IP65	IPX7 / floats
CHASSIS	Electrically isolated impact resistant plastic	Cast aluminum	Aluminum	Aluminum	Sealed chassis	Polycarbonate with TPE overmold
MOUNTING OPTIONS	Flush & flat	Flush & bail	Flush & flat (remote)	Flush & flat (remote)	Flush, flat & surface	Puck mount / screw, adhesive pad & puck
WARRANTY	1 year	1 year	3 years	1 year	1 year	2 years

XS SERIES SPEAKER COMPARISON



XS-FL77SPGW



XS-F77CWB



XS-FL65SPGW



XS-F65CWB

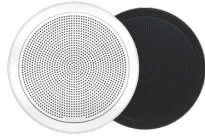


XS-F40CWB

SPECIFICATIONS

SPEAKER SIZE	7.7"	7.7"	6.5"	6.5"	4"
PEAK POWER (WATTS)	260	260	200	200	120
RMS POWER RATING (WATTS)	65	65	50	50	30
EFFICIENCY (1W/1M)	92dB	92dB	91dB	91dB	87dB
FREQUENCY RESPONSE	70Hz - 18kHz	70Hz - 18kHz	80Hz - 18kHz	80Hz - 18kHz	100Hz - 18kHz
IMPEDANCE	4 Ohms	4 Ohms	4 Ohms	4 Ohms	4 Ohms
TWEETER TYPE	Aluminum dome	Aluminum dome	Aluminum dome	Aluminum dome	Aluminum dome
CONE MATERIAL	Polypropylene	Polypropylene	Polypropylene	Polypropylene	Polypropylene
VOICE COIL DIAMETER	1.18"	1.18"	1.18"	1.18"	1"
MOUNTING DIAMETER CLEARANCE	162mm [6-3/8"]	162mm [6-3/8"]	135mm [5-5/16"]	135mm [5-5/16"]	99mm [3-7/8"]
MOUNTING DEPTH CLEARANCE	77mm [3"]	77mm [3"]	67mm [2-2/8"]	67mm [2-2/8"]	54mm [2-1/8"]
LED LIGHTING	RGB	No	RGB	No	No
WARRANTY	3 years	3 years	3 years	3 years	3 years

FM SERIES / SM SERIES / SPEAKER COMPARISON



FM-F77RW
FM-F77RB



FM-F77SW
FM-F77SB



FM-F65RW
FM-F65RB



FM-F65SW
FM-F65SB



SM-F65CW
SM-F65CB

SPECIFICATIONS

SPEAKER SIZE	7.7"	7.7"	6.5"	6.5"	6.5"
PEAK POWER (WATTS)	200	200	120	120	100
RMS POWER RATING (WATTS)	50	50	30	30	-
EFFICIENCY (1W/1M)	91dB	91dB	87dB	87dB	84dB
FREQUENCY RESPONSE	80Hz - 18kHz	80Hz - 18kHz	100Hz - 18kHz	100Hz - 18kHz	150Hz - 20kHz
IMPEDANCE	4 Ohms	4 Ohms	4 Ohms	4 Ohms	4 Ohms
TWEETER TYPE	Aluminum dome	Aluminum dome	Aluminum dome	Aluminum dome	-
CONE MATERIAL	Polypropylene	Polypropylene	Polypropylene	Polypropylene	Polypropylene
MOUNTING DIAMETER CLEARANCE	165mm [6-1/2"]	165x165mm [6-1/2"x 6-1/2"]	138mm [5-7/16"]	138x138mm [5-7/16"x 5-7/16"]	130mm [5-1/8"]
MOUNTING DEPTH CLEARANCE	83mm [3-1/4"]	83x83mm [3-1/4"x 3-1/4"]	70mm [2-3/4"]	70x70mm [2-3/4"x 2-3/4"]	24mm [15/16"]
LED LIGHTING	No	No	No	No	No
WARRANTY	3 years	3 years	3 years	3 years	1 year

FR SERIES / EL SERIES / SOUND-PANEL / SPEAKER COMPARISON



MS-FR7021
MS-FR7022



MS-FR6021
MS-FR6022



MS-FR4021



EL-F651SPG



EL-F651W
EL-F651B



RV-FS402W
RV-FS402B



MS-CL602



MS-OS420

SPECIFICATIONS

SPEAKER SIZE	7"	6"	4"	6.5"	6.5"	471mm x 211mm [18-9/16" x 8-5/16"]	6"	4"
PEAK POWER (WATTS)	260	200	120	150	150	200 total (100 per speaker connection)	120	100
RMS POWER RATING (WATTS)	-	-	-	-	-	50 total (25 per speaker connection)	40	25
EFFICIENCY (1W/1M)	91dB	90dB	87dB	88dB	88dB	87dB	89dB	86dB
FREQUENCY RESPONSE	60Hz - 22kHz	70Hz - 22kHz	90Hz - 22kHz	45Hz - 16kHz	45Hz - 16kHz	67Hz - 20kHz	(-10dB/-3dB) 50Hz - 20kHz / 85Hz - 20kHz	80Hz - 20kHz
IMPEDANCE	4 Ohms	4 Ohms	4 Ohms	4 Ohms	4 Ohms	4 Ohms	6 Ohms	4 Ohms
TWEETER TYPE	Titanium dome	Titanium dome	Titanium dome	N/A	N/A	Silk dome	Silk dome	PEI
CONE MATERIAL	CURV	CURV	CURV	Polypropylene	Polypropylene	Polypropylene	Polypropylene	Polypropylene
MOUNTING DIAMETER CLEARANCE	156mm [6-1/8"]	130mm [5-1/8"]	98mm [3-7/8"]	130mm [5-1/8"]	130mm [5-1/8"]	431mm x 171mm [17" x 6-3/4"]	206mm [8-1/8"]	200mm x 137mm [7-7/8" x 5-3/8"]
MOUNTING DEPTH CLEARANCE	78mm [3-1/16"]	72mm [2-7/8"]	54mm [2-1/8"]	43mm [1-11/16"]	43mm [1-11/16"]	43 mm [1-11/16"]	78mm [3-1/16"]	163mm [6-7/16"]
LED LIGHTING	No	No	No	RGB	No	No	No	No
WARRANTY	3 years	3 years	3 years	1 year	1 year	1 year	1 year	1 year

SIGNATURE SERIES AMPLIFIER COMPARISON



SG-DA12250



SG-DA41400



SG-DA51600



SG-DA61500



SG-DA82000

SPECIFICATIONS

PEAK POWER (WATTS)	2250	1400	1600	1500	2000
AMPLIFIER CLASS	Class-D	Class-D	Class-D	Class-D	Class-D
FREQUENCY RESPONSE	10Hz - 300Hz - 3dB (subwoofer)	10Hz - 50kHz - 3dB	10Hz - 50kHz - 3dB	10Hz - 40kHz - 3dB	10Hz - 40kHz - 3dB
OPERATING VOLTAGE	10.8 - 16 V	10.8 - 16 V	10.8 - 16 V	10.8 - 16 V	10.8 - 16 V
MAXIMUM OPERATING CURRENT	120A	80A	80A	75A	100A
FUSE RATINGS	3 x 40A	2 x 40A	2 x 40A	3 x 40A	4 x 40A
UNDER/OVER VOLTAGE PROTECTION	Yes	Yes	Yes	Yes	Yes
TOTAL RATED POWER OUTPUT 4 OHM	500 W RMS x 1 @ 14.4V - 4 Ohm 1% THD	150 W RMS x 4 @ 14.4V - 4 Ohm 1% THD	80 W RMS x 4 + 250 W RMS x 1 @ 14.4V - 4 Ohm 1% THD	100 W RMS x 6 @ 14.4V - 4 Ohm 1% THD	100 W RMS x 8 @ 14.4V - 4 Ohm 1% THD
TOTAL RATED POWER OUTPUT 2 OHM	850 W RMS x 1 @ 14.4V - 2 Ohm 1% THD	220 W RMS x 4 @ 14.4V - 2 Ohm 1% THD	130 W RMS x 4 + 330 W RMS x 1 @ 14.4V - 2 Ohm 1% THD	140 W RMS x 6 @ 14.4V - 2 Ohm 1% THD	140 W RMS x 8 @ 14.4V - 2 Ohm 1% THD
TOTAL RATED POWER OUTPUT	1100 W RMS x 1 @ 14.4V - 1 Ohm 1% THD	440 W RMS x 2 @ 14.4V - 4 Ohm bridged 1% THD	250 W RMS x 2 @ 14.4V - 4 Ohm bridged 1% THD + 250 W RMS x 1 @ 14.4V - 4 Ohm 1% THD	280 W RMS x 3 @ 14.4V - 4 Ohm bridged 1% THD	280 W RMS x 4 @ 14.4V - 4 Ohm bridged 1% THD
SIGNAL TO NOISE RATIO (AT 4 OHM RATED POWER OUTPUT)	>80dB	>95dB	>95dB	>85dB	>85dB
SEPARATION/CROSSTALK	-	>45dB	>45dB	>60dB	>60dB
HP VARIABLE CROSSOVER	10Hz - 80Hz (subwoofer)	32Hz - 320Hz	32Hz - 320Hz	32Hz - 320Hz	32Hz - 320Hz
LP VARIABLE CROSSOVER	32Hz - 320Hz (subwoofer)	32Hz - 320Hz	32Hz - 320Hz	32Hz - 320Hz	32Hz - 320Hz
MOUNTING DIMENSIONS	Length: 300mm [11-13/16"] Width: 210mm [8-1/4"] Height: 50mm [2"]	Length: 300mm [11-13/16"] Width: 210mm [8-1/4"] Height: 50mm [2"]	Length: 300mm [11-13/16"] Width: 210mm [8-1/4"] Height: 50mm [2"]	Length: 420mm [16-9/16"] Width: 210mm [8-1/4"] Height: 57mm [2-1/4"]	Length: 420mm [16-9/16"] Width: 210mm [8-1/4"] Height: 57mm [2-1/4"]
WARRANTY	3 years	3 years	3 years	3 years	3 years

AMPLIFIER COMPARISON



MS-AM504



MS-AM402



MS-AM702

SPECIFICATIONS

PEAK POWER (WATTS)	500	400	140
AMPLIFIER CLASS	Class-AB	Class-AB	Class-D
FREQUENCY RESPONSE	5Hz - 38kHz - 3dB	5Hz - 38kHz - 3dB	10Hz - 20kHz
OPERATING VOLTAGE	10.8 - 16 V	10.8 - 16 V	10.8 - 16 V
MAXIMUM OPERATING CURRENT	50A	25A	10A
FUSE RATINGS	2 x 25A	1 x 25A	1 x 10A
UNDER/OVER VOLTAGE PROTECTION	No	No	Under voltage protection only
TOTAL RATED POWER OUTPUT 4 OHM	65 W RMS x 4 @ 14.4V - 4 Ohm 1% THD	65 W RMS x 2 @ 14.4V - 4 Ohm 1% THD	20 W RMS x 2 @ 14.4V - 4 Ohm 10% THD
TOTAL RATED POWER OUTPUT 2 OHM	100 W RMS x 4 @ 14.4V - 2 Ohm 1% THD	100 W RMS x 2 @ 14.4V - 2 Ohm 1% THD	30 W RMS x 2 @ 14.4V - 2 Ohm 10% THD
TOTAL RATED POWER OUTPUT 4 OHM BRIDGED	200 W RMS x 2 @ 14.4V - 4 Ohm Bridged 1% THD	200 W RMS x 1 @ 14.4V - 4 Ohm Bridged 1% THD	-
SIGNAL TO NOISE RATIO (AT 4 OHM RATED POWER OUTPUT)	>95dB	>95dB	>95dB
SEPARATION/CROSSTALK	>60dB	>60dB	>55dB
HP VARIABLE CROSSOVER	40Hz - 600Hz	40Hz - 600Hz	60Hz - 600Hz
LP VARIABLE CROSSOVER	40Hz - 160Hz	40Hz - 160Hz	-
MOUNTING DIMENSIONS	Length: 366mm [14-7/16"] Width: 299mm [9"] Height: 53mm [2-1/16"]	Length: 296mm [11-2/3"] Width: 299mm [9"] Height: 53mm [2-1/16"]	Length: 128mm [5-1/16"] Width: 78mm [3-1/16"] Height: 51mm [2"]
WARRANTY	1 year	1 year	3 years

TECHNICAL SPECIFICATIONS

STEREOACTIVE

TUNER	FM / AM (Japan, Australasia, Europe, USA) + Weatherband (USA only)
BLUETOOTH	V 4.1 with ANT® support / A2DP / AVRCP
USB	Type-A Port with Apple/Android 1A charging
USB FORMAT	FAT 32
USB AUDIO FORMAT	MP3
MADE FOR IPOD AND IPHONE	Apple IAP2 lightning connector products
AOA ANDROID	Android Opensource audio protocol
SPEAKERS	2 x 2.5" + passive radiator
AMPLIFIER OUTPUT PER CHANNEL	Class-D / 40 Watts (2 x 20W RMS)
BATTERY	Internal rechargeable Li-Ion battery provides up to 20 hours of use
CHARGING REQUIREMENTS	110~220 Volt AC wall charger (supplied) or 12VDC 2A car charger (optional accessory); charges within 3 hours
WATER RESISTANT	IPX7 / Floats
CHASSIS	Polycarbonate with TPE overmold
FUSION-LINK REMOTE APP VIA BLUETOOTH	Control via : Apple (Lightning connector products) and Android
SMARTWATCH APP VIA ANT	Garmin Smartwatches (Vivo Active / HR, Fenix 3 / HR, Tactix Bravo, Quatix 3, D2 Bravo) - requires Fusion-Link™ Garmin connectIQ® App
VOICE PROMPTS	12 unique multi-language voice prompts
MOUNTING	Standard Fusion Puck Mount Supplied with screw and adhesive pad, custom Puck mounting solutions are available as accessories
DIMENSIONS	236mm(W) x 82mm(H) x 139mm(D) 9-5/16"(W) x 3-1/4"(H) x 5-1/2"(D)
WEIGHT	1.3kg

STEREOS

Common Stereo Specifications

FM TUNER

Europe and Australasia Frequency range	87.5 – 108MHz
USA Frequency range	87.5 – 107.9MHz
Japan Frequency range	76 – 95MHz

AM TUNER

Europe and Australasia Frequency range	522 – 1620kHz
USA Frequency range	530 – 1710kHz
Japan Frequency range	522 – 1620kHz

GENERAL

Operating voltage	+10.8–16 VDC
Pre – Output Voltage excluding 70 Series & BB100	4V p-p
Pre – Output Voltage 70 Series & BB100	3V p-p
Fuse rating (Exception MS-RA55)	15 Amp

MS-RA70, MS-RA70N, MS-BB100

Max Power	50W x 4
-----------	---------

MS-RA55

Fuse rating	15 Amp
Max Power	45W x 4

MS-BB300

Max Power	50W x 4
-----------	---------

WIRED REMOTE CONTROL

MS-NRX300

Mounting diameter	50mm (2")
Screen	FSTN Dot Matrix LCD
Connection	NMEA 2000® Micro

- Compatible with MS-RA770, MS-RA670, MS-UD755, MS-AV755, MS-RA70N, MS-BB100, MS-UD650, MS-AV650, and MS-BB300.
- BB100 and RA70N requires existing powered NMEA 2000 network

BLUETOOTH MODULES

MS-BT100

Effective Range	10m (33ft)
Bluetooth Profile	A2DP
Connects via	Aux In
Power Requirements:	12V DC (negative ground)
Operating Voltage	10.5 – 16V

PORTABLE MEDIA DEVICE DOCK

MS-UNIDOCK

Media Device Dimension: 137mm x 71mm x 13mm (3-15/16" x 2-13/16" x 1/2")

- Compatible with MS-AV755, MS-UD755, MS-AV650, MS-UD650, MS-RA70N, MS-BB100, MS-BB300 and MS-RA205, MS-IP700i, MS-AV700i

DAB+ RADIO

Regions Supported	EU, Norway, Switzerland, Australia
Standard Compatibility	DAB, DAB+
Input Voltage	10.8 to 16 VDC
• Compatible with MS-RA770, MS-RA670, MS-AV755, MS-UD755, MS-AV650, MS-UD650, MS-BB100, MS-RA70, MS-RA70N	