

The #1 Solution for PERMANENT, Easy-To-Use, Air & Water Leak Repairs for the HVAC and Roofing Professional



Tips & Installation Instructions

Application Instructions (All Products)

1. Locate area needing repair or sealing.
2. Clean the surface. Allow it to dry completely. Recommended cleaners: EternaClean, Lacquer Thinner, Acetone, Denatured Alcohol, etc. (If rusty, scrape or sand loose rust off, then wipe off dust.)
3. Remove release liner. (See Liner Removal Tips section.) Only remove enough liner for the area you are working on. Keep adhesive side clean and dry. Apply tape to surface.
4. Apply pressure to activate bonding process. Use a steel roofer's roller for best results. The firmer the pressure or rubbing applied, the faster the bond.

*NOTE: EternaBond does not stick to silicone.

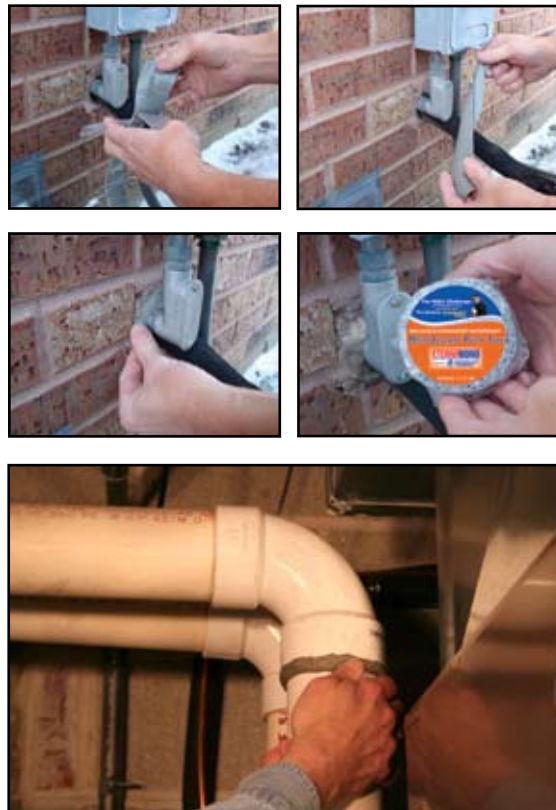
For cold weather application, keep tape at room temperature before applying. Use EternaPrime anytime temperature is below 40°F (4.4°C).

Photos in Example: Repair of a single-ply roof system.



Use MicroSealant Putty Tape for Gaps, Hole & Pipe Joints and Penetration Sealing

1. Cut MicroSealant Putty Tape into length needed.
2. Remove release liner from both sides of tape.
3. Twist tape into "rope", forming a bead of desired thickness.
4. Press MicroSealant into gap or penetration to fill void. Smooth to edges. DONE!



Liner removal instructions to expose MicroSealant.

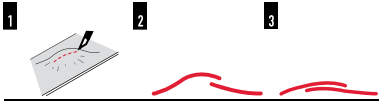
1. Grab outer edges with thumb & forefingers.
2. Push fingers together, bunching the tape in the middle.
3. In a fast motion, snap the tape forward and backward 7-10 times.
4. Push fingers together again, allowing liner to "pop" from the tape.
5. Peel liner from tape and apply to prepared surface.



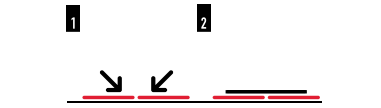
Installation Tips

EternaBond works best if contact to the roof surface is 100%. When variations in the surface create an air bubble larger than 3/4" or "tenting" occurs within 3/4" of the edge of the EternaBond; or if a curve creates openings along the edge of the EternaBond, we recommend the following:

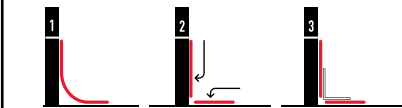
AIR BUBBLE: Lance, cut or pierce the bubble and squeeze the air out. The EternaBond will re-seal the cut.



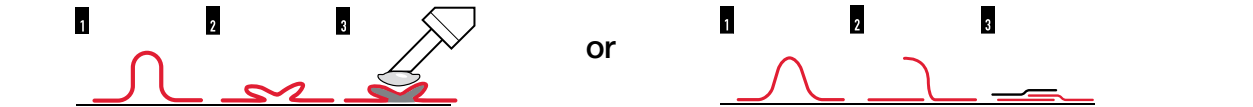
BUTT JOINT: Pinch the joint together. Place second piece of EternaBond over joint to insure seal.



POCKETS IN CORNERS: Cut pocket so the EternaBond is flat along both surfaces. Use second piece in corner to complete seal.



OPENINGS IN THE ETERNABOND ALONG THE EDGE, (also known as a "Fish Mouth"). This usually occurs when the EternaBond is bunched together. Two solutions for this situation: Press down the opening and seal the edge with a good quality caulking or sealant, or cut the bunched EternaBond with a razor so it can be folded down, one side of the cut EternaBond pressed against the surface, the other side folded over the first. A second, smaller piece of EternaBond should then be used to seal the cut area.



LOW-TEMP INSTALLATION

from 40°F (4.4°C) to -20°F (-28.9°C)

- Keep EternaBond tape warm
- Brush away snow and remove ice, make sure surface is dry
- Pretreat area with EternaPrime (Except PVC roofs)
- Allow to dry (+/- 30 minutes)
- Install EternaBond tape

UNSTABLE SURFACES: (Rusty metal, Canvas connectors, Dirty drain pans, Mortar joints, Masonry, Wood, Dusty surfaces, etc) Remove or brush off loose debris. Pretreat repair area with EternaPrime before applying tape.

CANVAS CONNECTORS: Treat canvas with a light coat of EternaPrime.

FLEXIBLE DUCTWORK: Use WebSeal for flexible duct work to trunk line connections and sealing, and for flex duct to flex duct connections.

COOLING TOWERS, DRAIN PANS, GRAVITY TANKS, COLLECTOR HOUSINGS: Wherever possible install EternaBond on the positive (water) side of the leak (so the water is hitting the back of the tape instead of the sealant). Do not use WebSeal on the negative side of a liquid holding vessel.

PVC SURFACES: Score the surface with a Scotchbrite pad, sand paper, or equal. Wipe away the dust.

DO NOT use EternaPrime.

METAL ROOFS: Remove loose rust and/or pretreat with EternaPrime. All EternaBond tapes work well, but WebSeal and roofcoating is recommended.

GRANULATED ROOFS: EternaBond RoofSealPLUS is recommended (provides extra 30 mils of MicroSealant for deeper sealing), or use MicroSealant Putty Tape and press matching roof granule into the top surface. Matching roof granule is obtainable by gently sweeping the shingle surface with a whisk broom, or (often) is in the gutter.

ETERNABOND®

featuring  MICROSEALANT®
TECHNOLOGY

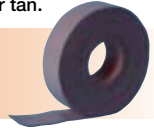
Learn more about shop supplies on our website.

ROOFSEAL™ MICROSEALANT® ROOF REPAIR TAPE



The choice of professional roofers with over 60,000,000 feet sold. MicroSealant Technology allows tape to fuse at a molecular level to all roof types including EPDM (Rubber), TPO, PVC, Hypolan, aged PVC, BUR, Modified, Shingle, coated Metal, Copper, etc. making a perfect, lifetime seal that will never harden, shrink, crack or fall off! Available in black, white, grey or tan.

MICROSEALANT® PUTTY TAPE



Extremely versatile - Use it as a watertight gasket to seal seams and equipment curbs. It can also be twisted into a rope and used to seal holes and gaps around all pipes and penetrations. Fuses to surfaces at a molecular level and will not crack, dry out or lose its grip.

ALUMBOND™ HEAVY DUTY DUCT SEALING TAPE



4 mil aluminum sheet adds structural strength to any surface. Fuses at a molecular level to all types of ductwork. Will never harden, crack, or peel and fall off like other duct sealing products. For greater tensile strength in high pressure conditions or for repairing drain pans. Once applied and fused, we dare you to try and rip it off!

DUCT SEALING TAPE



2 mil high grade aluminum foil with a hybrid EternaBond Sealant.

Fuses to rigid ductwork. Will never harden, crack, or peel and fall off like other duct sealing products. Lasts as long as the ductwork!

WEBSEAL® FABRIC BACKED DUCT SEALING TAPE



Fuses at a molecular level to all types of ductwork, roofing surfaces and gutters. Perfect for sealing flex duct connections and for high pressure SpacePak™ and Unico™ connections. Will never harden, crack, or peel and fall off like other duct sealing products. Easy to work with - Sticks on contact - *Even in dusty attics!* Great for making existing flexible ductwork systems Title 24 compliant.

COPPERFLASH



Ideal for copper gutter, valley repair and restoration. For use on virtually all roofs, cupolas, floors, etc. UV stable, moisture tight, and provides air and vapor barrier. 1oz copper combined with EternaBond MicroSealant adhesive creates a hard surface. Will patina over time.