

CATALOG 2019

# WHEREVER YOU GO

CLIMATE, COOKING, SANITATION, SAFETY, AND POWER PRODUCTS  
THAT MAKE YOU FEEL AT HOME WHILE ON THE ROAD

Mobile living made easy.

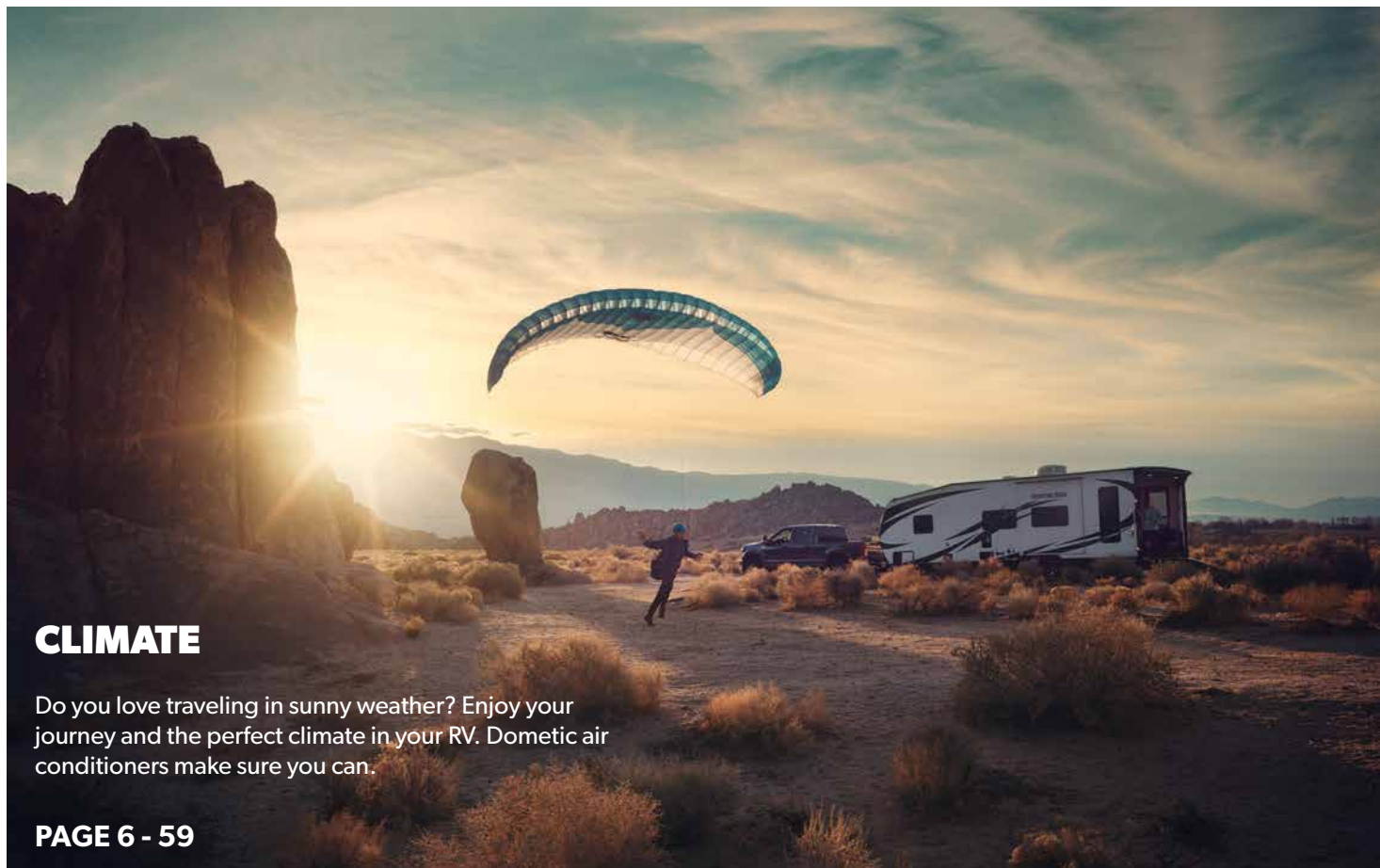
 **DOMETIC**



# WELCOME TO DOMETIC!

Millions of people around the world are using Dometic products. They all have one thing in common – the longing for freedom and independence on the move. Our job is to meet their essential needs on the journey. Like cooking, keeping food fresh, taking care of personal hygiene and maintaining a pleasant temperature. We also create solutions to make driving safer and more convenient and innovative electronic devices for smart use of precious battery power. Welcome to our new catalog! We invite you to go on a journey of discovery. Explore the Dometic world and let us know what we can do for you.





## CLIMATE

Do you love traveling in sunny weather? Enjoy your journey and the perfect climate in your RV. Dometic air conditioners make sure you can.

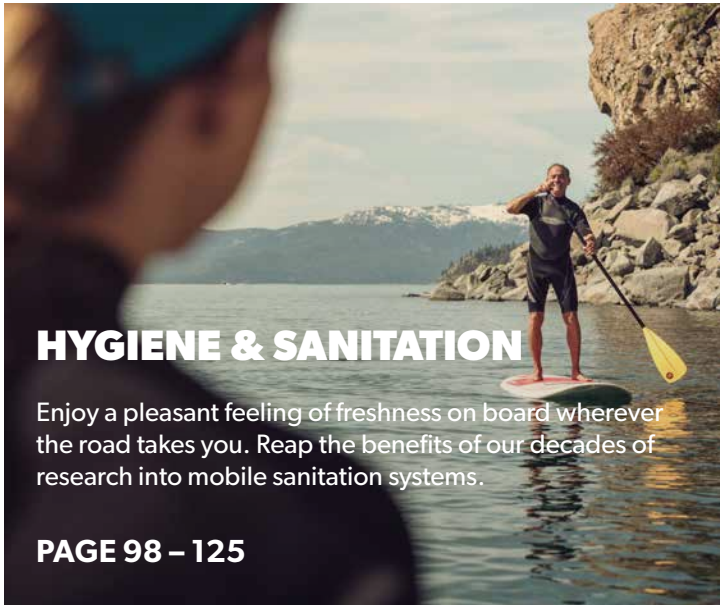
**PAGE 6 - 59**



## FOOD & BEVERAGE

Cook what you like, eat with friends, keep your provisions nice and fresh throughout the journey. We have taken care of every detail.

**PAGE 60 - 97**



## HYGIENE & SANITATION

Enjoy a pleasant feeling of freshness on board wherever the road takes you. Reap the benefits of our decades of research into mobile sanitation systems.

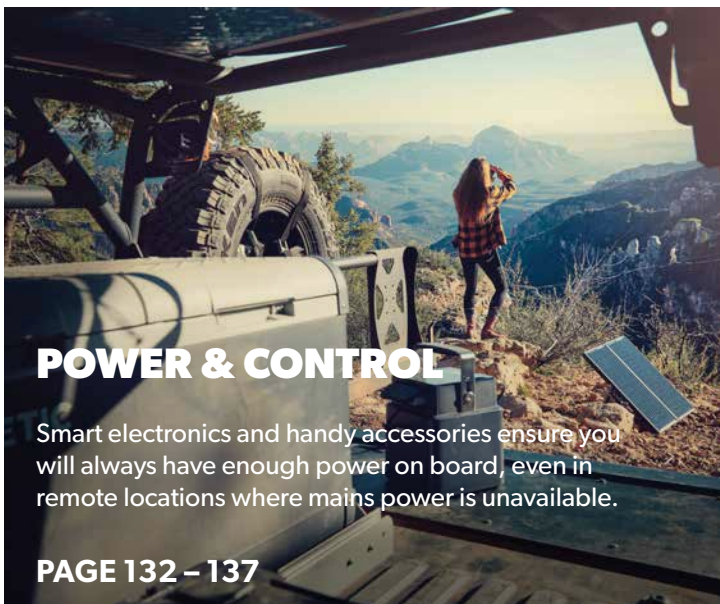
**PAGE 98 – 125**



## SAFETY & SECURITY

Sit back and relax. Dometic accessories let you enjoy the most precious weeks of the year in complete comfort and safety.

**PAGE 126 – 131**



## POWER & CONTROL

Smart electronics and handy accessories ensure you will always have enough power on board, even in remote locations where mains power is unavailable.

**PAGE 132 – 137**

## CLIMATE

Air Conditioners	10 – 21
Furnaces	22 - 27
Ventilation	28 - 35
Awnings	36 - 59

## FOOD & BEVERAGE

Cooking	64 – 69
Coolers	70 – 85
Refrigeration	86 – 97

## HYGIENE & SANITATION

Sanitation	102 – 113
Cleaning	114 – 119
Water Heaters	120 – 125

## SAFETY & SECURITY

Safety Solutions	128 – 131
------------------	-----------

## POWER & CONTROL

Portable Lithium Battery	134 – 137
--------------------------	-----------

## DOMETIC ON THE WEB

Here's where you can find the complete Dometic range, with detailed information about all products. Plus, interesting facts about our company and download links for all our catalogs.

**DOMETIC.COM**

/ AIR CONDITIONERS

/ VENTILATION

/ FURNACES

/ AWNINGS

# CLIM



# ATE





# BRIGHT PROSPECTS...

## AIR CONDITIONERS, AWNINGS AND VENTILATION FOR A WONDERFUL VACATION EXPERIENCE

Most of us love traveling south, with hot summers and plenty of sunshine. But it can really heat up your motorhome even in moderate climates and make staying inside unbearable. The alternative? Install a Dometic air conditioner to create your own climate, take a deep breath and enjoy!

When you stop at a beautiful place, turn the area in front of your vehicle into a roofed patio with a Dometic awning. It will treat you to many relaxing hours. Dometic windows and roof lights let light and air into the vehicle. Tailor-made blinds and fly screen systems work to keep prying eyes and insects out. That means: excellent prospects for you to have a wonderful time on vacation.





## **AIR CONDITIONERS**

Dometic provides roof and under-bench air-conditioners plus a wide selection of accessories. Highly efficient, our roof models are ideal for saving space inside your RV.

## **VENTS**

Good air quality is essential if you want to enjoy your journey. Dometic provides flexible ventilation solutions to keep you (and your equipment) in good condition. Our roof vents come with either a three speed or variable speed fan for maximum comfort. Which means you can look forward to fresh air without it costing you a fortune.

## **FURNACES**

If you are planning to travel when the weather's cold, a heat source is a must. Dometic provides a selection of furnaces to keep you warm – even if it's well below zero outside. Engineered for easy maintenance and excellent air delivery, our lightweight products are compact and reliable.

## **AWNINGS**

No matter the type of RV, Dometic has a solution to fit your demand. Our range of awnings include power and manual with attractive fabric and hardware options to match your unit's décor.





# AI CONDIT



# PIONEERS

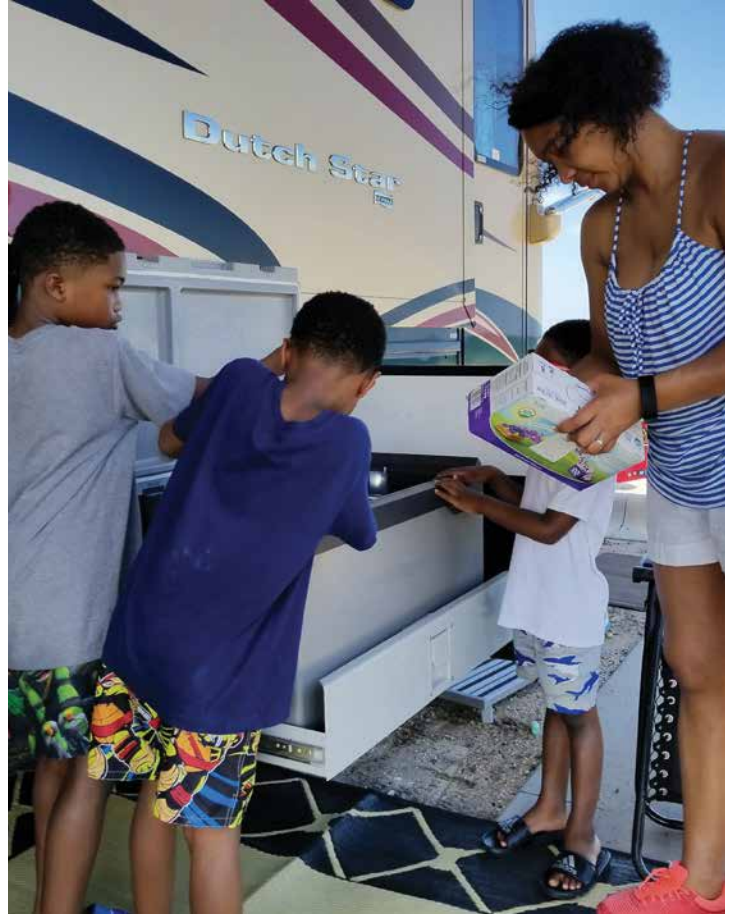


# SOULFUL RV FAMILY

## AN UNCONVENTIONAL RV FAMILY – BY ANY STANDARDS

Keith is a retired NFL lineman whose work takes him back to South Florida a few months out of the year. They decided to buy an RV for their family instead of renting an apartment or staying in hotels. With six children, they needed something that was an investment and could accommodate the entire family, even though some of their children are grown or in college. Tia's dream is to have the whole gang traveling together someday.

Dometic tags along for the ride to help make their RVing experience feel as comfortable as home. "Yes," says Keith, "we have a few Dometic products to make life onboard easier. The Oasis power door awning provides necessary shade. It can get pretty hot where we go. And that's where our Penguin AC unit comes in handy too, and let's not forget the CF 110."





# PENGUIN II

THE NUMBER-ONE LOW PROFILE AIR CONDITIONER

The leading low profile RV air conditioner, the Penguin II Rooftop Air Conditioner is a powerful cooler perfect for both ducted and non-ducted applications (air distribution box available separately). With an ultra-low profile, the streamlined rooftop unit is aerodynamically designed to reduce drag when on the move. Air conditioning or heat pump versions available.



# LOW-PROFILE AERODYNAMICS

The leading low-profile RV air conditioner, the Penguin II Rooftop Air Conditioner, is a powerful cooler. With its ultra-low profile, this streamlined rooftop unit is aerodynamically designed to reduce drag when on the move. It also looks fantastic! The high-performance motor and fan deliver powerful cooling performance using a more eco-friendly R410A refrigerant. Despite its compact and lightweight design, features such as the robust rib-reinforced base pan ensure that the Penguin II can handle tough environments for a longer service life.



## DOMETIC PENGUIN II

This low-profile rooftop air conditioner with sleek, futuristic styling offers premium comfort control and improved aerodynamics. A high-performance motor and fan deliver superb cooling performance.

- High-performance motor and fan
- Low profile – 11¼ in / 29 cm high
- Sleek, contemporary shroud improves aerodynamics, reduces wind resistance
- Accommodates ducted or non-ducted cooling



The Brisk II Rooftop Air Conditioner is the next generation of climate control. Stronger, lighter, smaller and more environmentally friendly than its predecessor, the innovative design of the Brisk II maximizes airflow and performance. Available as A/C only or A/C and heat pump.





# SUPERIOR CLIMATE CONTROL

What makes Brisk air conditioners best-in-class of any standard RV rooftop air conditioner for their weight, air flow and capacity? There are various factors that combine to achieve market leading results. These include the large air openings which promote superior air flow and cooling capacity, while the EPP foam housing both reduces weight and also contributes to improved cooling. The Brisk is incredibly robust, components such as its carbon steel base have proven their durability by coming through vibration tests lasting for 30 hours and more! The optional heater function is ideal for use on cool evenings, with a multi-speed blower for users to adjust according to their cooling or heating needs. Finally, great care has been taken to reduce operating noise: with the motor, compressor and evaporator bracketed together for vibration-free, quiet operation. Long copper lines and dual rubber bushings are also responsible for minimizing noise and vibration. Allowing you to enjoy comfortable temperatures in peace and quiet!



## DOMETIC BRISK II AIR

The Brisk II's smart design and improved materials combine to maximize air flow and performance. It is best-in-class of any standard RV rooftop air conditioner for weight, air flow and capacity. Tested for use in extreme conditions.

- High-performance design delivers 15 % air flow increase over previous models
- EPP foam housing reduces weight and increases cooling performance
- Easy installation and maintenance
- Requires inside ceiling assembly and control kit or ADB
- Custom-composite laminated shroud is UV-protected for lasting beauty



## DOMETIC BLIZZARD NXT

Dometic's Blizzard NXT rooftop air conditioner not only looks great, its highly efficient operation makes cooling air easy! The aerodynamic design will minimize the drag from air resistance while the vehicle is in motion. Vibration isolation components also reduce sound to a minimum, ensuring you are not disturbed by the noise of your air conditioner. The Blizzard NXT is robust and durable, meaning it will supply refreshing, cool air in your RV for many years. Compatible with Dometic CT single zone or CCC II multi-zone thermostats.

- Attractive aerodynamic design
- Vibration isolation minimizes compressor noise
- Efficient high-capacity air conditioning and heat pump models
- Robust and durable construction
- High-impact polypropylene injection-molded shroud and base pan
- Inside ceiling assembly and/or thermostat sold separately



## DOMETIC COMMERCIAL GRADE

- Cooling capacity of 15,000 BTU
- More environmentally friendly 410A refrigerant
- Robust and strong
- Dual rubber bushings at top and bottom minimize noise and vibration
- Powder-coated base pan is 15 % thicker than other models
- Galvanized steel top plate for lasting strength



## DOMETIC ATWOOD AIRCOMMAND

- High performance dual motor design
- Efficient design delivers cool air while using less power
- Superbly quiet operation
- Includes electronic digital display for precise temperature control and readout
- Available in black or white



## DOMETIC COOL CAT

- 10,500 BTU cooling capacity
- Efficient heating at 30 °F ambient temperature controlled by an LCD thermostat
- Compact size with small footprint for use in tight spaces
- Lightweight, robust construction with simple installation
- Easy access, washable micro-weave air filter

## ROOFTOP AIR CONDITIONERS (Available in black or white)

MODEL	MODEL NUMBER	BTU RATING*	ELECTRICAL RATING	COMPRESSOR RATING LOAD	FAN MOTOR RATED LOAD	AC CIRCUIT PROTECTION	UPPER UNIT WEIGHT LBS	THERMOSTATS**
Penguin II	640310C	High Efficiency	120 V AC/60 HZ/1 PH	10.5	3.5	20 Amp	99	ADB or Thermostat
Penguin II	640315C	13,500	120 V AC/60 HZ/1 PH	12.5	3.6	20 Amp	99	ADB or Thermostat
Penguin II	640316C	High Capacity	120 V AC/60 HZ/1 PH	12.5	3.6	20 Amp	99	ADB or Thermostat
Blizzard NXT	H540315	13,500	120 V AC/60 HZ/1 PH	12.7	2.8	20 Amp	96	ADB or Thermostat
Blizzard NXT	H540316	15,000	120 V AC/60 HZ/1 PH	13.2	2.8	20 Amp	99	ADB or Thermostat
Brisk II	B59530	High Efficiency	120 V AC/60 HZ/1 PH	8.6	2.5	15 Amp	87	ADB or Thermostat
Brisk II	B57915	13,500	120 V AC/60 HZ/1 PH	12.4	2.5	20 Amp	72	ADB or Thermostat
Brisk II	B59516	15,000	120 V AC/60 HZ/1 PH	13.3	2.0	20 Amp	74	ADB or Thermostat
Commercial	479516	15,000	120 V AC/60 HZ/1 PH	13.3	2.0	20 Amp	103	ADB
AirCommand	15027 - White	13,500	115 V AC/60 HZ	11.0	2.5	20 Amp	88	Ducted Kit
AirCommand	15032 - Black	13,500	115 V AC/60 HZ	11.0	2.5	20 Amp	88	Ducted Kit
AirCommand	15025 - White	13,500	115 V AC/60 HZ	11.0	2.5	20 Amp	88	Non-ducted Kit
AirCommand	15030 - Black	13,500	115 V AC/60 HZ	11.0	2.5	20 Amp	88	Non-ducted Kit

## HEAT PUMPS (Available in black or white)

MODEL	MODEL NUMBER	BTU RATING*	ELECTRICAL RATING	COMPRESSOR RATING LOAD	FAN MOTOR RATED LOAD	AC CIRCUIT PROTECTION	UPPER UNIT WEIGHT LBS	THERMOSTATS**
Penguin II	650015C	13,500	120 V AC/60 HZ/1 PH	12.5	3.5	20 Amp	99	ADB
Penguin II	650016C	High Capacity	120 V AC/60 HZ/1 PH	12.5	3.5	20 Amp	99	ADB
Brisk II	B59196	15,000	120 V AC/60 HZ/1 PH	13.3	2.0	20 Amp	100	CT Single Zone
CoolCat	441003	10,150	120 V AC/60 HZ/1 PH	8.9	2.2	20 Amp	70	CT Single Zone
AirCommand	15028 - White	15,000	115 V AC/60 HZ	13.3	2.5	20 Amp	88	Ducted Kit
AirCommand	15033 - Black	15,000	115 V AC/60 HZ	13.3	2.5	20 Amp	88	Ducted Kit
AirCommand	15026 - White	15,000	115 V AC/60 HZ	13.3	2.5	20 Amp	88	Non-ducted Kit
AirCommand	15031 - Black	15,000	115 V AC/60 HZ	13.3	2.5	20 Amp	88	Non-ducted Kit

\* Nominal Capacity \*\*Thermostats: Additional control kits for thermostats may be required

Note: Include suffix of Heat Pump or Air Conditioner model number (.xxx) being replaced when ordering a replacement unit.



### DOMETIC COMFORT CONTROL BOARD

The Dometic Comfort Control Board can control your Dometic heating and cooling appliances.

- Digital display - modern design and user-friendly
- Zoned climate control
- Low profile bluelight display



### DOMETIC CT THERMOSTAT

The Dometic CT Thermostat can control your Dometic heating or cooling appliances.

- Low profile design
- Large LCD display
- Single zone control
- Available in Black or White



### DOMETIC RETURN AIR GRILLE

The Dometic Return Air Grille provides excellent air circulation with ease of installation. For use with Dometic ducted rooftop air conditioners.

- Modern design with no exposed fasteners
- 14-1/8" L x 7-5/8" W
- Micro-Therm filter is quick and easy to remove and wash



### DOMETIC AIR DISTRIBUTION BOX

The Dometic Air Distribution Box is perfect for distributing cool A/C to your mobile living space.

- Five multi-directional air slots
- Powerful air distribution
- Easy manual ceiling control
- For non-ducted applications only
- Washable Hepa-style air filters



### DOMETIC ATWOOD AIRCOMMAND PLENUM

The Dometic Atwood AirCommand Plenum is perfect for distributing cool A/C to your mobile living space.

- Use for non-ducted air conditioners
- Powerful and quiet air distribution
- Flip down thermostat and remote control



### DOMETIC A/C CONVERSION KIT

The Dometic Conversion Kit allows you to quickly and easily convert to a Dometic Air Conditioner.

- Easy conversion from one A/C to another
- Easy installation
- Use existing control systems with Dometic model

## THERMOSTATS

MODEL NUMBER	DESCRIPTION	MODEL NUMBER	DESCRIPTION
3312020.000	Comfort Control Center II Multi-Zone Kit	3316311.000	Blizzard NXT Replacement Shroud - White
3314082.011	Comfort Control Center II Thermostat - White	3316311.012	Blizzard NXT Replacement Shroud - Black
3314082.000	Comfort Control Center II Thermostat - Black	3314471.001	Penguin II Replacement Shroud - White
3316230.000	CT Single Zone Control Kit Cool/Furnace - White	3314471.003	Penguin II Replacement Shroud - Black
3316230.014	CT Single Zone Control Kit Cool/Furnace - Black	3315332.000	Brisk II Replacement Shroud - White
3316232.000	CT Single Zone Control Kit Cool/Furnace/Heat Strip - White	3315332.001	Brisk II Replacement Shroud - Black
3316232.010	CT Single Zone Control Kit Cool/Furnace/Heat Strip - Black	3309364.002	For Brisk model 7,100 BTU - White
3316400.000	CT Bluetooth Single Zone Control Kit Cool/Furnace - White	3309518.003	For Brisk models - White With Gray Band
3316400.013	CT Bluetooth Single Zone Control Kit Cool/Furnace - Black	3309364.002	For Brisk models - White
3316250.000	CT Single Zone Thermostat Cool/Furnace/Heat Strip/Heat Pump - White	3309364.010	For Brisk models - Black
3316250.012	CT Single Zone Thermostat Cool/Furnace/Heat Strip/Heat Pump - Black	3308046.014	For Penguin models - White
3316255.000	CT Bluetooth Single Zone Thermostat Cool/Furnace/Heat Strip/Heat Pump - White	3308046.030	For Penguin models - Black
3316255.011	CT Bluetooth Single Zone Thermostat Cool/Furnace/Heat Strip/Heat Pump - Black	3310710.003	For HP models - White
		3311996.007	For HP models - Black
		15050	AirCommand Top Shroud - White
		15051	AirCommand Top Shroud - Black

## AIR DISTRIBUTION BOXES & ACCESSORIES

MODEL NUMBER	DESCRIPTION	MODEL NUMBER	DESCRIPTION
3314851.000	ADB - Manual Controls - White	3315930.010	Quick Cool Ducted Return Air Package - White
3314850.000	ADB - to be used with Wall Mount Thermostat - White	3315333.003	Return Air Filter - Universal ADB
3314853.000	ADB - 650015C/650016C Penguin II Heat Pump	15022	AirCommand Ducted Indoor Plenum with Remote, White
15021	AirCommand Non-ducted Indoor Plenum with Remote, White		

## ACCESSORIES

MODEL NUMBER	DESCRIPTION	MODEL NUMBER	DESCRIPTION
3100281P009	Air Filter	15055	A/C Evaporator Fan Motor
3310718.006	14" x 14" Mounting Gasket	3310727.007	Fan Blade - Brisk Air Only
3310727.015	Hard Start Kit - Brisk II	3107688.016	Drain Kit
3311883.000	Hard Start Kit - Penguin II	3314087.000	Cool Cat - Installation Kit, Non-ducted (Thermostat included) - Black
3313107.064	Brisk II - Sensor Cap - White	3313107.126	Cool Cat - Grill Filter Kit
3313107.066	Brisk II - Sensor Cap - Black	3311170.000	Cool Cat - Outside Grill Kit
3100895.006	Qty 4 - 6" Bolts	3310727.007	Motor Starter Kit - Brisk II Only
3101538.001	Qty 6 - 9" Bolts	3314534.000	Carrier to Brisk Air/Brisk II - Air Conditioner Conversion Kit
3105584.001	18" Extension Cord	3314534.011	Carrier to Penguin II - Air Conditioner Conversion Kit
3106486.008	Remote Sensor - 20 ft.	3314537.000	Coleman to Brisk Air/Brisk II - Air Conditioner Conversion Kit
3310709.005	Fan Blade - Brisk II Air Only	3314537.014	Coleman to Penquign II - Air Conditioner Conversion Kit
15024	AirCommand Molex Universal AC Installation Electrical Connector	15089	AirCommand Adapter Kit Ducted
15023	AirCommand AC Remote Control Non-ducted	15086	AirCommand Bolt Package for Thick Ceilings
15029	AirCommand AC Wall Thermostat - White	15034	A/C Wall Thermostat, Black
15066	AirCommand Inside Filters Non-ducted	15056	A/C Condenser Fan
15084	Ducted Filter Kit	10571	Universal Remote - For Ducted Units

# FURN

EXIT POLL TO REMOVE





# ACES



# STAY WARM

## BRING A HEAT SOURCE

It's getting late and a little chilly. It's time to turn up the heat. A Dometic furnace should be an essential part of your travel plans. If you're looking for market-leading furnace performance, you're in the right place. We offer a broad range of products to meet your needs.

Engineered for easy maintenance and superior air delivery. Its compact size offers installation convenience. The Dometic Mojave Furnace now comes with a durable stamped steel door that is built to last.





## FURNACES

The Dometic Mojave Furnace is a compact, light weight heater boasting a quiet operation due to reduced air turbulence. For easy and flexible installation, it may be placed vertically or horizontally. With the most duct configurations on the market, you can distribute heat exactly as you need it.

## THERMOSTATS

The Dometic Thermostat puts the power in your hands to control the heat in your mobile living space regardless of location. Weather you are camping in the middle of winter or driving in the cold conditions of the North, this Dometic Thermostat provides perfect control.



# STAY WARM WITHOUT BEING DISTURBED

The Dometic Mojave Furnace is a compact, lightweight heater boasting a quiet operation due to reduced air turbulence. For easy and flexible installation, it may be placed vertically or horizontally. With the most duct configurations on the market, you can distribute heat exactly as you need it. Access door (available in Arctic White and Black) and thermostat sold separately.



QUIET



12 V DC



GAS

## DOMETIC MOJAVE MEDIUM FURNACE

Engineered for easy maintenance and superior air delivery. Its compact size offers installation convenience. The Dometic Mojave Medium Furnace now comes with a durable stamped steel door that is built to last (select models only).

- Horizontal or vertical configuration for flexible installation
- Quiet operation due to reduced air turbulence
- Low-profile, compact design:  
7  $\frac{3}{8}$  x 16  $\frac{1}{2}$  x 20 in. (H x W x D)
- 12 V DC powered unit
- 20,000 - 35,000 BTU
- Outside access door required



### DOMETIC MOJAVE SMALL FURNACE

- Horizontal or vertical configuration for flexible installation
- Quiet operation due to reduced air turbulence
- Outside access door required



### DOMETIC MOJAVE LARGE FURNACE

- Horizontal or vertical configuration for flexible installation
- Quiet operation due to reduced air turbulence
- Outside access door required



### DOMETIC THERMOSTAT

- Temperature control for your furnace
- User friendly controls
- Fuel saving efficiency

## DOMETIC MOJAVE FURNACES

MODEL NUMBER	DESCRIPTION	BTU	GAS	DIMENSIONS (H x W x D)	INPUT VOLTAGE	WEIGHT
38916	Dometic Mojave Small Doored Furnace	12,000	LP Gas	7 x 12 x 20 in	12 V DC	21 lbs
38917	Dometic Mojave Small Doored Furnace	16,000	LP Gas	7 x 12 x 20 in	12 V DC	21 lbs
38918	Dometic Mojave Small Doored Furnace	18,000	LP Gas	7 x 12 x 20 in	12 V DC	21 lbs
35526	Dometic Mojave Medium Doored Furnace	20,000	LP Gas	7 3/8 x 16 1/2 x 20 in	12 V DC	26 lbs
35525	Dometic Mojave Medium Doored Furnace	25,000	LP Gas	7 3/8 x 16 1/2 x 20 in	12 V DC	26 lbs
35524	Dometic Mojave Medium Doored Furnace	30,000	LP Gas	7 3/8 x 16 1/2 x 20 in	12 V DC	26 lbs
35522	Dometic Mojave Medium Doored Furnace	35,000	LP Gas	7 3/8 x 16 1/2 x 20 in	12 V DC	26 lbs
38363	Dometic Mojave Large Doored Furnace	35,000	LP or Natural Gas	9 x 16 1/2 x 20 in	12 V DC	39 lbs
38362	Dometic Mojave Large Doored Furnace	40,000	LP or Natural Gas	9 x 16 1/2 x 20 in	12 V DC	39 lbs
38359	Dometic Mojave Large Doored Furnace	40,000	LP Gas	9 x 16 1/2 x 20 in	12 V DC	39 lbs
35519	Dometic Mojave Medium Door Less Furnace	25,000	LP Gas	7 3/8 x 16 1/2 x 20 in	12 V DC	26 lbs
35506	Dometic Mojave Medium Door Less Furnace	35,000	LP Gas	7 3/8 x 16 1/2 x 20 in	12 V DC	26 lbs
35527	Dometic Mojave Medium Door Less Furnace	16,000	LP Gas	7 3/8 x 16 1/2 x 20 in	12 V DC	26 lbs
38361	Dometic Mojave Large Doored Furnace	35,000	LP Gas	9 x 16 1/2 x 20 in	12 V DC	39 lbs

## DOMETIC MOJAVE FURNACE ACCESS DOORS

MODEL NUMBER	DESCRIPTION	MODEL NUMBER	DESCRIPTION
33045	Dometic Mojave Furnace Access Door, Small, Arctic White	33044	Dometic Mojave Furnace Access Door, Small, Black
33057	Dometic Mojave Furnace Access Door, Medium, Arctic White	33056	Dometic Mojave Furnace Access Door, Medium, Black
33059	Dometic Mojave Furnace Access Door, Large, Arctic White	33058	Dometic Mojave Furnace Access Door, Large, Black
32422	Dometic Trim Ring, Black	32337	Dometic Bottom Discharge Kit, Large Furnace Only

# VENTIL

A photograph taken from inside a vehicle, looking out through a window. On the left side of the window, a dark green towel is draped over the edge. The view outside shows a calm lake under a clear sky. In the middle ground, a person is standing on a red and white stand-up paddleboard, holding a paddle. The water reflects the sky and the person. In the background, there are mountains and a rocky shoreline. A wooden dock is visible in the bottom right corner of the frame.



# ATION



# LIGHT AND FRESH AIR ON THE GO

## FOR FRESH AND CLEAN AIR IN THE VEHICLE

It doesn't take much for RV enthusiasts to feel happy once they are on the move. They seek to live at one with nature, to enjoy light and fresh air even inside their rolling home. Good air quality is essential if you want to enjoy your journey.

Dometic provides flexible ventilation solutions to keep you (and your equipment) in good condition. Our roof vents come with an integrated, energy-efficient three speed or variable speed fan for maximum comfort and convenience. Which means you can look forward to fresh air without it costing you a fortune. You can choose between manual and automatic operation.



## VENTILATION

Almost a century of combined experience in the recreational and commercial vehicle industry, along with aviation and automotive technology. Dometic vents will exchange the air in your vehicle in minutes. Cooking smoke and unpleasant aromas are whisked away in seconds. Dometic Fan-Tastic Vent can reduce the use of air conditioning allowing you to breathe natural, fresh ambient outside air.

## LIGHT AND FRESH AIR ON THE GO

Warm and stale air out, fresh and clean air in: Dometic Fan-Tastic Vent model 7350 exchanges air in minutes, is pleasantly quiet and energy efficient. The core of this truly fantastic ventilation solution is a high performance axial fan which is firmly integrated in the roof window and can be adjusted as required. Simply set the desired temperature on the remote control and the fan motor will start and stop automatically as the interior temperature of the vehicle exceeds or drops below the selected temperature level. Fan-Tastic Vent works best with the roof window slightly open to create a pleasant, draft-free air flow.



QUIET



12 VDC



### DOMETIC FAN-TASTIC VENT ROOF VENT, MODEL 7350

Keep air circulating with the Dometic Fan-Tastic Vent model 7350 Vent Fan. The 7350 has multiple fixed manual speeds or automatic variable speeds to keep air flowing and a reverse switch sets the fan blade direction (OUT-exhaust or IN-intake). A built-in thermostat maintains your desired comfort level. The built-in rain sensor automatically closes the dome when wet. Includes a remote control.

- 14 fixed manual speeds or automatic variable speeds
- Reverse switch controls the fan blade direction (OUT-exhaust or IN-intake)
- Rain sensor with On/Off switch and automatic dome open/close switch
- A built-in thermostat maintains your desired comfort level
- Fits standard roof window 14 in. x 14 in.
- Automatic lift dome
- White, 6 in. garnish included





QUIET



12 VDC



## DOMETIC FAN-TASTIC VENT ROOF VENT, MODEL 3350

The Dometic Fan-Tastic Vent model 3350 features a rain sensor that automatically closes the dome when wet. The built-in manual knob allows for closing the dome in an emergency.

- Three fan blade speeds (low, medium, high)
- Three position fan blade reverse switch (OUT-exhaust / OFF / IN-intake)
- A built-in thermostat maintains your desired comfort level
- Automatic lift dome
- Quiet operation
- Low amp draw, less than 3.0 amps
- White, 6 in. garnish included



QUIET



12 VDC



## DOMETIC FAN-TASTIC VENT ROOF VENT, MODEL 1450

The Dometic Fan-Tastic Vent model 1450 now has a new modern look. This lightweight, compact and durable unit seals tight when not in use. Powerful 12 in, 10-blade fan quickly moves air out of the cabin. Includes integrated tabs for mounting a Dometic Ultra Breeze cover.

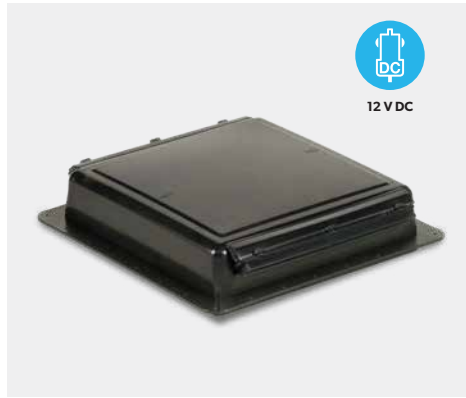
- Three fan blade speeds (low, medium, high)
- Three position fan blade reverse switch (OUT-exhaust / OFF / IN-intake)
- Manual lift dome
- Quiet operation won't disturb you
- Fits standard 14 in. x 14 in. openings
- White high profile universal base
- Will operate with the lid closed



### DOMETIC FAN-TASTIC VENT ROOF VENT, MODEL 1250

This lightweight, compact and durable vent fan seals tight when not in use. Powerful 12 in, 10-blade fan quickly moves air into and out of the cabin.

- Three fan blade speeds (low, medium, high)
- White base
- Manual lift dome
- Quiet operation won't disturb you



### DOMETIC EZ-BREEZE VENT FAN, MODEL 600

- Built in rain cover enables air circulation without needing to open the dome
- Three times more airflow than static vents
- 12 V DC
- Fits standard 14 in. x 14 in.
- White, 6 in. garnish included



### DOMETIC ENDLESS BREEZE

- Powerful 12V portable fan
- Designed to move a large volume of air
- Attaches to pet cages to provide them cool comfort on warm days



### DOMETIC FAN-TASTIC VENT UPGRADE KIT, MODEL 7350

This kit allows you to upgrade your Dometic Fan-Tastic vent (model 7350) and upgrade with an array of features and functions.

- 14 variable speed
- Thermostat for easy climate control
- Rain sensor automatically closes dome when wet
- Three position fan blade reverse switch (OUT-exhaust / OFF / IN-intake)



### DOMETIC FAN-TASTIC VENT REPLACEMENT DOME

- White or Smoke colored dome
- Weather-resistant
- Impact resistant

## DOMETIC ULTRA BREEZE VENT COVER

The Dometic Ultra Breeze Vent Cover is perfect for protecting your Dometic Fan-Tastic Vent without compromising on air flow. The Dometic Ultra Breeze Vent Cover is available in white, smoke or black.

- Vent protection
- Utilizes airfoil technology design
- Blocks the rain, not the airflow: retains up to 95% airflow
- For use with all types of roof vents
- Fits standard 14 in x14 in vent openings
- Installs easily without any drilling
- All hardware is included



## ROOF VENTS

MODEL NUMBER	DESCRIPTION	MODEL NUMBER	DESCRIPTION
807350	Dometic Fan-Tastic Vent Roof Vent, Model 7350	801450	Dometic Roof Vent, Model 1450
803350	Dometic Fan-Tastic Vent Roof Vent, Model 3350	800601	Dometic Ez-Breeze Ventillation Fan, Model 601
801250	Dometic Fan-Tastic Vent Roof Vent, Model 1250	800600	Dometic Ez-Breeze Ventillation Fan, Model 600

## VENT COVERS & ACCESSORIES

MODEL NUMBER	DESCRIPTION	MODEL NUMBER	DESCRIPTION
807359	Dometic Fan-Tastic Vent Upgrade Kit, Model 7350	K1020-09	Black Replacement Dome
U1500WHS	Dometic Ultra Breeze Vent Cover - White	K1020-81	White Opaque Replacement Dome
U1500BLS	Dometic Ultra Breeze Vent Cover - Black	K1020-19	Smoke Translucent Replacement Dome
U1500GRS	Dometic Ultra Breeze Vent Cover - Grey Smoke	K2035-81	Pop N' Lock Vent Screen - White
U1550WH	Ultra Breeze Bug Screen - White	K2035-80	Pop N' Lock Vent Screen - Off White
U1550BL	Ultra Breeze Bug Screen - Black	K2035-10	Pop N' Lock Vent Screen - Grey
01100WH	Endless Breeze 12 V Box Fan - White		



AWN

# INGS





# LIGHT AND FRESH AIR ON THE GO

## FOR FRESH AND CLEAN AIR IN THE VEHICLE

It doesn't take much for RV enthusiasts to feel happy once they are on the move. They seek to live at one with nature, to enjoy light and fresh air even inside their rolling home. Good air quality is essential if you want to enjoy your journey.

Dometic provides flexible ventilation solutions to keep you (and your equipment) in good condition. Our roof vents come with an integrated, energy-efficient three speed or variable speed fan for maximum comfort and convenience. Which means you can look forward to fresh air without it costing you a fortune. You can choose between manual and automatic operation.



## AWNINGS

Dometic has been manufacturing high quality awnings for many years. We offer a wide range of wall mounted products for varying budgets and vehicles sizes. We provide both manual and power options, with and without wind sensors.

## SLIDE TOPPERS

Some say Dometic's Slide Topper awnings are the best you can get. Designed to offer protection from weather, debris and mildew, our Slide Toppers are durable and easy to install. Which means you can look forward to worry-free, reliable performance.

## DOOR AWNINGS

The Dometic door awning is totally enclosed in an all-metal case. Its wide canopy provides cover for the door and side window, to protect both your entryway and you while you're looking for your keys. Dometic door awnings are available in white, as well as in manual and power versions.

## WINDOW AWNINGS

Our well-designed window awnings make any vehicle feel like home. They are practical, not only providing shade and privacy, but also helping with energy costs. They can help keep your coach cooler so you may not need to run the air conditioning as often. Dometic window awnings are made with high quality fabric, simple to install and easy to maintain.

## DOMETIC AWNING SPECIFICATIONS

	9100 POWER	9000	8500	9500	TRIM LINE	ELITE WINDOW AWNING	DELUXE PLUS WINDOW AWNING	ELITE OASIS II	OASIS II	SLIDETOPPER FC	ELITE SLIDETOPPER FC	DELUXE SLIDETOPPER FC
PATIO	•	•	•	•	•							
WINDOW						•	•					
DOOR								•	•			
SLIDEOUT										•	•	•
VINYL CANOPY FABRIC	•		•	•	•		•	•	•	•	•	•
ACRYLIC CANOPY FABRIC	•	•				•		•	•			
METAL WEATHERSHIELD	•	•	•			•				•	•	
VINYL WEATHERSHIELD	•		•				•					•
POWER	•			•				•				
UNIVERSAL HARDWARE		•	•									
CASE OR BOX				•				•	•			
MANUAL		•	•	•	•	•	•		•	•	•	•
AVAILABLE SIZES												
RAIN SHED POSITION	•	•										
REMOTE CONTROL				•								
WEIGHT (lbs)												

\* Width sizes available in 1ft increments

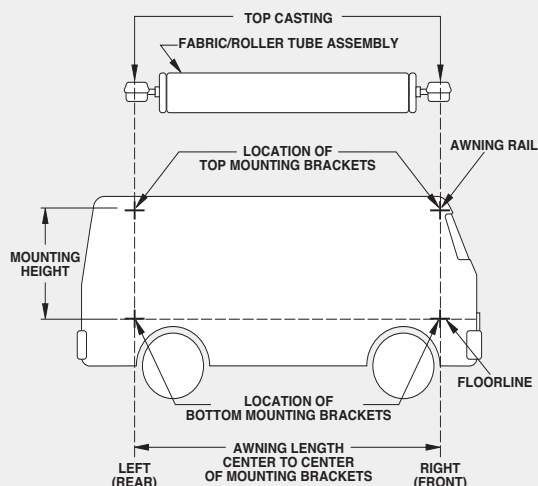
## THE PERFECT AWNING FOR EVERY TYPE OF VEHICLE



MODEL	MOTORHOME & TRAILERS	TRAVEL TRAILERS	FIFTH WHEEL MOTOR HOMES	MINI MOTORHOMES	TRUCK CAMPERS	FOLD-DOWN CAMPERS	VANS
9100 POWER	•	•	•	•			
9000	•	•	•	•			
8500	•	•	•	•	•	•	
9500	•	•	•	•	•	•	•
TRIMLINE						•	•
ELITE WINDOW AWNING	•	•	•	•	•		
DELUXE PLUS WINDOW AWNING	•	•	•	•	•		
ELITE OASIS II	•	•	•	•	•		
OASIS II	•	•	•	•	•		
SLIDETOPPER FC	•	•	•	•			
ELITE SLIDETOPPER EZ	•	•	•	•			
DELUXE SLIDETOPPER EZ	•	•	•	•			



## AWNING INSTALLATION MEASURING



## PATIO AWNINGS

- When installing a new patio awning on a recreational vehicle, the location of windows, doors, storage compartments, and trim must be considered so the awning will not block or obstruct them. The floor line and solid structural members must be located for proper and secure mounting of hardware.
- The true awning length is obtained by measuring between top casting to top casting, center-to-center (see illustration).
- The two bottom mounting brackets should be positioned directly in line with the floor line of the vehicle. Make sure the center-to-center distance between the two bottom mounting brackets is exactly the same as the distance between the two top mounting brackets and the awning length (see illustration).
- When ordering replacement fabrics or roller tubes, specify the center-to-center measurement between the top casting and NOT the length of the fabric or roller tube (see illustration). When ordering new awnings, specify the length to nearest foot, not to a fraction of a foot.

Dometic produces special length awnings, for example: 10' 8", 14' 6", 16' 6", and 19' 6". When ordering fabric or roller tubes for these sizes, be sure of the measurement between the center of the top casting to center of top casting. For total overall awning mounting length, add 3 inches to the center-to-center measurement between the top castings.

## MEASUREMENTS

### HOW TO DETERMINE WHICH MODEL OF HARDWARE YOU CAN USE

- Measure from top of door to the awning rail. This distance will tell you if you have enough room to install an awning.
  - These minimums needed to use STANDARD hardware
    - Under 6" - advisable not to use Power Awning, edge of door will scrape fabric
    - Need 6" to install Power Awning with vinyl weathershield
    - Need 7" to install Power Awning with metal weathershield

Note: Add 2" to the minimum needed if door is at or near center of awning\*
  - These minimums are needed to use Basement hardware
    - Need 11" to install Power Awning with vinyl weathershield

(2) Need 12" to install Power Awning with metal weathershield

Note: Add 2" to the minimum needed if door is at or near center of awning\*

- Want to know how high roller will be from the ground in the extended/out position? Do the math:
  - Measure distance from ground to awning rail ( ) minus 18" = ( ) this is the distance roller will be from ground on Standard hardware\*
  - Measure distance from ground to awning rail ( ) minus 36" = ( ) this is the distance roller will be from ground on Basement and 5th Wheel hardware\*\*

Knowing the above measurements will allow you to make the correct choice as to which model of hardware you want to use on your Power Awning installation.

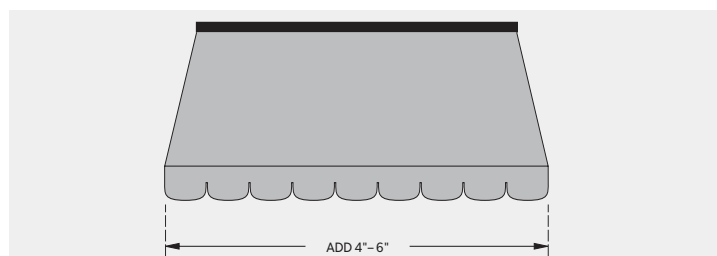
\* Must have minimum of 6" door to rail to use Standard

\*\* Must have minimum of 11" door to rail to use Basement. Center-to-center measurement between the top castings.

## SPECIFICATIONS

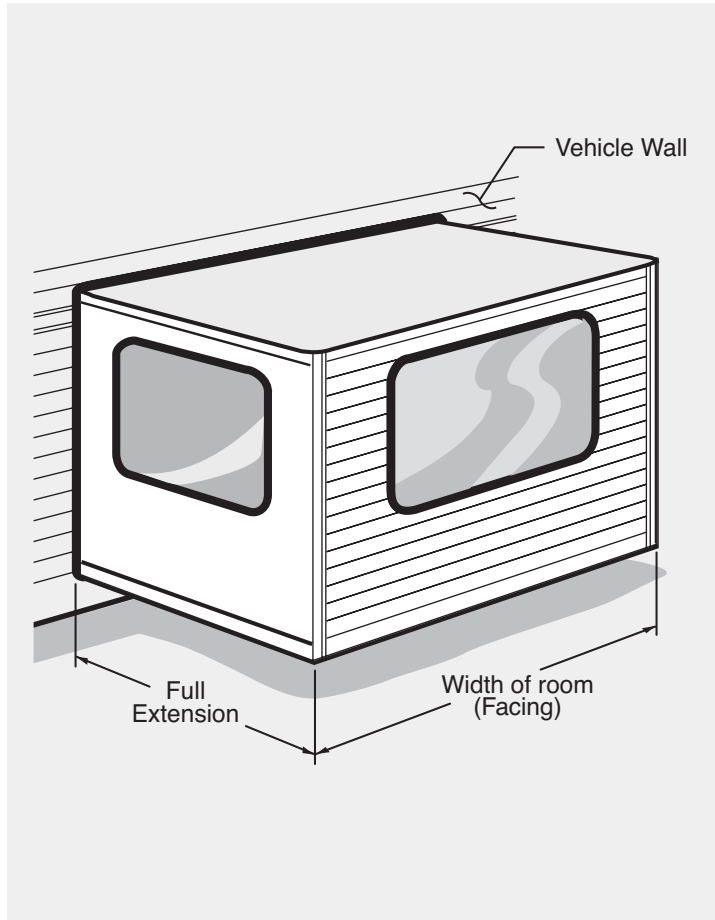
### INFORMATION YOU SHOULD KNOW ABOUT THE POWER AWNING.

- Extension when fully extended: 8 feet
- Lengths available: from 12 to 21 feet in one foot increments
- Length measured: from center of arm to center of arm
- Width of arm: 3" (1 1/2" on each side of center)
- Length of hardware back channel:
  - Standard hardware, 65 1/2"
  - Basement hardware, 62 1/4"
- Depth of arm closed: 3 1/4"
- Bottom bracket location from awning rail:
  - Standard hardware, 66"
  - Basement hardware, 63" (with extensions add 15")
- Pitch of fabric when fully open:
  - Standard hardware, 13 degrees
  - Basement and 5th Wheel hardware, 20 degrees
- Awning roller tube distance below awning rail when fully open:
  - 18" when using Standard hardware
  - 36" when using Basement hardware
  - with Standard hardware awning roller tube will be 92" (7' 8")
  - with Basement hardware awning roller tube will be 74" (6' 2")



## WINDOW AWNINGS

- When installing window awnings on a recreational vehicle, first measure the overall width of each window frame.
- The awning length is obtained by adding 4" to 6" to the overall width of the window frame.



**DETERMINING SIZE OF SLIDETOPPER**

To determine which size of SlideTopper you require, measure your room according to the picture and reference chart below. The SlideTopper will not work on rooms with a full extension greater than 42".

ROOM WIDTH	RECOMMENDED SIZE	ROOM WIDTH	RECOMMENDED SIZE
56" to 61.75"	66"	122" to 127.75"	132"
62" to 67.75"	72"	128" to 133.75"	138"
68" to 73.75"	78"	134" to 139.75"	144"
74" to 79.75"	84"	140" to 145.75"	150"
80" to 85.75"	90"	146" to 151.75"	156"
86" to 91.75"	96"	152" to 157.75"	162"
92" to 97.75"	102"	158" to 163.75"	168"
98" to 103.75"	108"	164" to 169.75"	174"
104" to 109.75"	114"	170" to 175.75"	180"
110" to 115.75"	120"	176" to 181.75"	186"
116" to 121.75"	126"	182" to 187.75"	192"

**ACRYLIC SHADOW COLORS - DOUBLE-SIDED**



**BLUE**  
Color Code: BR



**TEAL**  
Color Code: BJ



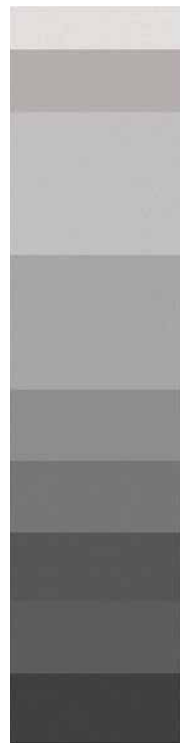
**BURGUNDY**  
Color Code: BQ



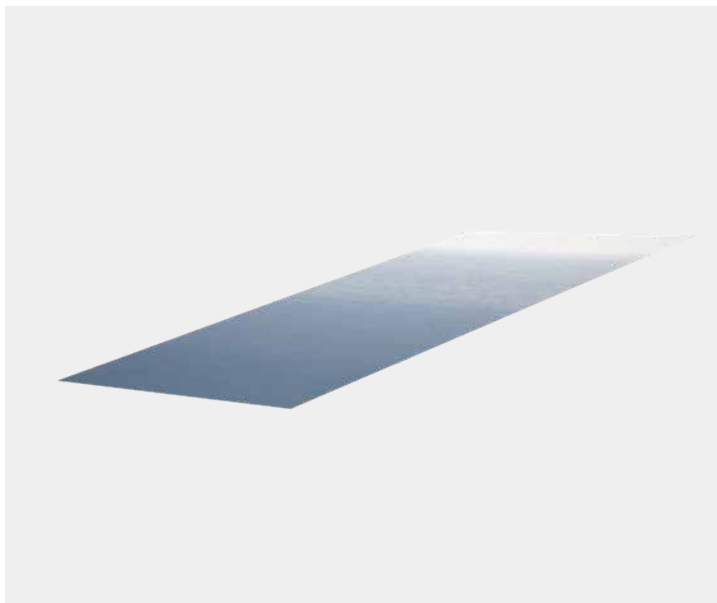
**FOREST GREEN**  
Color Code: CM



**SAND**  
Color Code: BS



**BLACK & GRAY**  
Color Code: BT



## REPLACEMENT FABRICS

Measure from Awning Center Arm to Center Arm

### UNIVERSAL REPLACEMENT VINYL FABRIC FADE PATTERN, POLAR WHITE VINYL WEATHERSHIELD\*\*\*

B3314989(XX).4(YY)

(XX)=Fabric Color Code:

NR=Onyx

NS=Sandstone

NV=Maroon

NT=Azure

NW=Meadow Green

NU=Bark

(YY)=Awning Length\*

8 - 25 feet

in whole foot increments

### SLIDETOPPER BULK REPLACEMENT FABRIC

SOLID COLOR, VINYL WEATHERSHIELD, DISPENSER BOX -  
50 FT. CONTINUOUS ROLL

MODEL NUMBER	DESCRIPTION	MODEL NUMBER	DESCRIPTION
T3106802FJ.600	50' x 47.5" Black	D3106802FJ.999	192" x 47.5" Black
T3106802CQ.600	50' x 47.5" White	D3106802CQ.999	192" x 47.5" White

### SLIDETOPPER REPLACEMENT FABRIC

SOLID COLOR, VINYL WEATHERSHIELD, SIX PACK, 192"

## VINYL LINEN FADE COLORS - DOUBLE-SIDED



**SANDSTONE**  
Color Code: NS



**AZURE**  
Color Code: NT



**BARK**  
Color Code: NU



**MAROON**  
Color Code: NV



**ONYX**  
Color Code: NR



**MEADOW GREEN**  
Color Code: NW

Replacement fabrics are not returnable

\* Fabrics approximately 9" less than awning size

\*\*\* Use B3108056[ ],408 through .425 for fabrics that take a metal weathershield. The metal weathershield is not included with this replacement fabric.



## DOMETIC 9100 POWER PATIO AWNING

The Dometic 9100 Power Patio Awning extends from the side of your vehicle to provide shade, increases the usable living space of your RV, and allows you to spend more time enjoying the outdoors! The awning hardware allows you to raise or lower the awning and independently adjust the pitch to allow for protection from low sun. The 9100 Power Patio Awning is offered in one-foot increments to maximize the shade available for your RV.

- One person control
- In-tube motor design is protected from the elements
- Knee Action design allows awning to flex in moderate winds
- Pitch adjustment allows awning to be lowered for low sun or rain shed
- Manual override

### VINYL FABRIC FADE PATTERN, METAL WEATHERSHIELD

917(XX)(YY).000(Z)

(XX)=Fabric Color Code: (YY)=Fabric Length (Z)=Weathershield & Endcap Finish Code:  
 NR=Onyx 10 - 21 feet B=Polar White  
 NS=Sandstone in whole foot increments U=Black  
 NV=Maroon  
 NT=Azure  
 NW=Meadow Green  
 NU=Bark

### WOVEN ACRYLIC FABRIC SHADOW PATTERN, METAL WEATHERSHIELD

910(XX)(YY).000(Z)

(XX)=Fabric Color Code: (YY)=Awning Length (Z)=Weathershield & Endcap Finish Code:  
 Bj=Teal Shadow 10 - 21 feet B=Polar White  
 BR=Blue in whole foot increments U=Black  
 CM=Forest Green  
 BS=Sand  
 BQ=Burgundy  
 BT=Black/Grey

### VINYL FABRIC FADE PATTERN, VINYL WEATHERSHIELD\*\*\*

915(XX)(YY).000(Z)

(XX)=Fabric Color Code: (YY)=Fabric Length (Z)=Weathershield & Endcap Finish Code:  
 NR=Onyx 10 - 21 feet B=Polar White  
 NS=Sandstone in whole foot increments U=Black  
 NV=Maroon  
 NT=Azure  
 NW=Meadow Green  
 NU=Bark

### HARDWARE & ACCESSORIES

MODEL NUMBER	DESCRIPTION
8952001.400(X)	Hardware, Basement Model
8952002.400(X)	Hardware, Standard Model
3312778.008(X)	Hardware, Bracket Adapters (8500/9100 - Replaces 8500 with 9500)
3109987.002	Accessory, Aux. Operation Kit
3310455.062	Accessory, Control Switch
8954001.400(X)	Basement Hardware with Pre-installed PowerChannel Rail
8954002.400(X)	Standard Hardware with Pre-installed PowerChannel Rail

(X)=Hardware Finish Code: B=Polar White, U=Black

\*\*\* For color coordination vinyl weathershield, replace .000(X) with one of the following:  
 .300(X) - Black vinyl weathershield: Available only with fabric colors Onyx (NR) or Bark (NU)  
 .600(X) - Beige vinyl weathershield: Available only with fabric color Sandstone (NS)

Note: Must have control switch for initial installation

## DOMETIC 9000 MANUAL PATIO AWNING

The Dometic 9000 Manual Patio Awning provides maximum comfort and protection from the sun. Choose from a wide variety of fade-resistant colors in our patented shadow pattern and find an awning that perfectly complements your motorhome or camper.

- Premium woven acrylic fabric dries quickly and has vibrant, fade-resistant colors
- Robust, all-metal weathershield offers protection while vehicle is on the move
- Easy set-up with patented, PermaLoop pull strap
- Self-locking lift handles ensure easy operation
- Anti-slack rafter pivot eliminates the need for re-tensioning



### 9000 WOVEN ACRYLIC FABRIC SHADOW PATTERN, METAL WEATHERSHIELD

839(XX)(YY).000(Z)

(XX)=Fabric Color Code: Bj=Teal Shadow BR=Blue CM=Forest Green BS=Sand BQ=Burgundy BT=Black/Grey	(YY)=Awning Length 8 - 25 feet in whole foot increments	(Z)=Weathershield & Endcap Finish Code: B=Polar White U=Black
--	---	--

### UNIVERSAL HARDWARE

MODEL NUMBER	DESCRIPTION
8952001.400(X)	Hardware, Basement Model
8952002.400(X)	Hardware, Standard Model
3312778.008(X)	Hardware, Bracket Adapters (8500/9100 - Replaces 8500 with 9500)
3109987.002	Accessory, Aux. Operation Kit
3310455.062	Accessory, Control Switch
8954001.400(X)	Basement Hardware with Preinstalled PowerChannel Rail
8954002.400(X)	Standard Hardware with Preinstalled PowerChannel Rail

(X)=Hardware Finish Code: B=Polar White, U=Black

Note: Optima Tension Rafter System included in H.D. hardware



## DOMETIC 8500 MANUAL PATIO AWNING

The Dometic 8500 awning combines great looks with a long life! This classic manual awning is easy to use, ensuring reliable shaded comfort wherever you are. Choose from a variety of colors, lengths and finishes.

- Secure rafter lock system stabilizes the awning and provides automatic tension
- Can easily be operated by one person
- Scratch-resistant fabric with UV protection
- Automatic rain shed feature prevents water from pooling
- Vinyl cushion lift handles
- Available in multiple colors, lengths and finishes to match your needs and style preferences

### 8500 VINYL FABRIC FADE PATTERN, METAL WEATHERSHIELD

858(XX)(YY).000(Z)

(XX)=Fabric Color Code: (YY)=Awning Length (Z)=Weathershield & Endcap Finish Code:  
 NR=Onyx 8 - 25 feet B=Polar White  
 NS=Sandstone in whole foot increments U=Black  
 NV=Maroon  
 NT=Azure  
 NW=Meadow Green  
 NU=Bark

### UNIVERSAL HARDWARE

MODEL NUMBER	DESCRIPTION
8273000.401(X)	Tall
8273000.402(X)	Short
8273000.408(X)	Tall/Short Combo
8273000.501(X)	Tall, Heavy-Duty
8273000.502(X)	Short, Heavy-Duty

(X)=Hardware Finish Code: B=Polar White, U=Black

### 8500 VINYL FABRIC FADE PATTERN, VINYL WEATHERSHIELD\*\*\*

848(XX)(YY).000(Z)

(XX)=Fabric Color Code: (YY)=Awning Length (Z)=Weathershield & Endcap Finish Code:  
 NR=Onyx 8 - 25 feet B=Polar White  
 NS=Sandstone in whole foot increments U=Black  
 NV=Maroon  
 NT=Azure  
 NW=Meadow Green  
 NU=Bark

Note: Optima Tension Rafter System included in H.D. hardware

\*\*\* For color coordination vinyl weathershield, replace .000(X) with one of the following:  
 .300(X) - Black vinyl weathershield: Available only with fabric colors Onyx (NR) or Bark (NU)  
 .600(X) - Beige vinyl weathershield: Available only with fabric color Sandstone (NS)

## DOMETIC 9500 CASE AWNING

The Dometic 9500 Case Awning is a convenient alternative to traditional awnings. The simple single piece assembly and lateral arms provide hassle-free installation.

- Available in 12-volt power or easy, manual crank-out operation
- Power awning's wind sensor automatically retracts awning in winds for maximum protection
- Automatic Rain Shed makes it easy to drain away accumulated water
- Double-sided vinyl Linen Fade fabric
- Case's brush seal cleans and seals the fabric for storage and long life
- Case available in black or white



### POWER - VINYL FABRIC FADE PATTERN, METAL WEATHERSHIELD\*\*\*

231(XX)(YY).003(Z)

(XX)=Fabric Color Code:	(YY)=Awning Length	(Z)=Weathershield & Case Color Finish Code:
NR=Onyx	08 = 8'	B=Polar White
NS=Sandstone	10 = 10'	U=Black
NV=Maroon	12 = 12'	
NT=Azure	13 = 13'	
NW=Meadow Green	15 = 15'	
NU=Bark	16 = 16'	

\*\*\* For color coordination vinyl weathershield, replace .000(X) with one of the following:  
.300(X) - Black vinyl weathershield: Available only with fabric colors Onyx (NR) or Bark (NU)  
.600(X) - Beige vinyl weathershield: Available only with fabric color Sandstone (NS)



## DOMETIC TRIMLINE BAG AWNING

Conveniently extend your mobile living space and enjoy a serene patio in no time with a compact bag awning. When it's time to hit the road, the awning folds into a compact bag for easy storage.

- Durable, reinforced double-sided vinyl fabric
- Easy to set up in just a few minutes
- Adjustable, click-lock poles ensure desired pitch is maintained
- Spring-loaded tension rafters
- Bag neatly slides into awning rail
- All parts stow neatly inside weatherproof, zippered bag

944(XX)(YY).002

(XX)=Fabric Color Code:	(YY)=Awning Length
NR=Onyx	07 = 7'
NS=Sandstone	08 = 8'
NV=Maroon	09 = 9'
NT=Azure	10 = 10'
NW=Meadow Green	11 = 11'
NU=Bark	12 = 12'



## DOMETIC TRIMLINE SCREEN ROOM

The Dometic TrimLine Screen Room is a terrific way to expand your living space at a very affordable price. (TrimLine Awning required)

- Attaches with Velcro
- Available in sizes to fit all TrimLine bag awnings
- Folds up to store in its own durable pouch
- Includes privacy panels

9472(YY).009

(YY)=Awning Length
07 = 7'
08 = 8'
09 = 9'
10 = 10'
11 = 11'
12 = 12'



## DOMETIC DOOR AWNINGS

The Dometic door awning is totally enclosed in an all-metal case. Its wide canopy provides cover for the door and side window – to protect both your entryway and you while you're looking for your keys. Dometic door awnings are available in white and black, as well as in manual and power versions.



### DOMETIC ELITE OASIS II

- Oasis Power Door Awning automatically extends and retracts from inside your RV
- Choose from durable woven acrylic or vinyl polar white fabric
- Canopy is 43 1/2" wide woven
- Available in black or white
- All metal case: 3"D x 5"W, 34" Extension
- 48' or 56' from end of case to end of case

#### POLAR WHITE, VINYL

975CQ(YY).010(Z)

(YY)=Awning Length  
48 = 0.48"  
56 = 0.56"

(Z)=Case Color Code:  
B=Polar White  
U=Black

#### ACRYLIC

975(XX)(YY).110(Z)

[XX]=Fabric Color Code:  
BL=Forest Green  
DA=Burgundy  
EE=Linen Tweed  
CD=Sapphire  
EK=Charcoal Gray

(YY)=Awning Length  
48 = 0.48"  
56 = 0.56"

(Z)=Case Color Code:  
B=Polar White  
U=Black

### DOMETIC OASIS II

- Oasis Manual Door Awning extends with an easy-operating hand crank
- Choose from durable woven acrylic or vinyl polar white fabric
- Canopy is 43 1/2" wide woven
- Available in black or white
- All metal case: 3"D x 5"W, 34" Extension
- 48' or 56' from end of case to end of case

#### POLAR WHITE, VINYL

976CQ(YY).010(Z)

(YY)=Awning Length  
48 = 0.48"  
56 = 0.56"

(Z)=Case Color Code:  
B=Polar White  
U=Black

#### ACRYLIC

976(XX)(YY).110(Z)

[XX]=Fabric Color Code:  
BL=Forest Green  
DA=Burgundy  
EE=Linen Tweed  
CD=Sapphire  
EK=Charcoal Gray

(YY)=Awning Length  
48 = 0.48"  
56 = 0.56"

(Z)=Case Color Code:  
B=Polar White  
U=Black

### DOMETIC OASIS II CONTROLS

MODEL NUMBER	DESCRIPTION
3311917.029	Complete control box required for electric awning
3109688.006	Remote switch assembly for WeatherPro Control Order additionally for WeatherPro



## DOMETIC ELITE WINDOW AWNING

The Dometic Elite Window Awning shields windows from the sun to help lower the temperature of the interior coach. Window awnings also protect the windows from light showers, so you can enjoy the fresh air without having a puddle in your mobile living space.

- Easy to use strap
- Setup takes less than 10 seconds
- Rich, vibrant color patterns
- Hardware sold separately

### STANDARD - WOVEN ACRYLIC FABRIC SHADOW PATTERN, METAL WEATHERSHIELD — USE WITH WINDOW HEIGHT UNDER 30"

85662(XX).(YYY)0-(Z)		
(XX)=Fabric Color Code:	(YY)=Awning Length	(Z)=Endcap and Metal Weathershield Finish Code:
BJ=Teal Shadow	030 = 30"    090 = 90"	B=Polar White
BR=Blue	036 = 36"    096 = 96"	U=Black
CM=Forest Green	042 = 42"    108 = 108"	
BS=Sand	048 = 48"    114 = 114"	
BQ=Burgundy	054 = 54"    120 = 120"	
BT=Black/Grey	060 = 60"    132 = 132"	
	066 = 66"    138 = 138"	
	072 = 72"    144 = 144"	
	078 = 78"    156 = 156"	
	084 = 84"	

### TALL - WOVEN ACRYLIC FABRIC SHADOW PATTERN, METAL WEATHERSHIELD — USE WITH WINDOW HEIGHT OVER 30"

85660(XX).(YYY)0-(Z)		
(XX)=Fabric Color Code:	(YY)=Awning Length	(Z)=Endcap and Metal Weathershield Finish Code:
BJ=Teal Shadow	030 = 30"    090 = 90"	B=Polar White
BR=Blue	036 = 36"    096 = 96"	U=Black
CM=Forest Green	042 = 42"    108 = 108"	
BS=Sand	048 = 48"    114 = 114"	
BQ=Burgundy	054 = 54"    120 = 120"	
BT=Black/Grey	060 = 60"    132 = 132"	
	066 = 66"    138 = 138"	
	072 = 72"    144 = 144"	
	078 = 78"    156 = 156"	
	084 = 84"	

### ELITE WINDOW AWNING - STANDARD MOUNTING BRACKET COLOR MATCHES ARMS, 18" ARMS

MODEL NUMBER	DESCRIPTION
830757.002B	Polar White
830757.002U	Black

### ELITE WINDOW AWNING - TALL MOUNTING BRACKET COLOR MATCHES ARMS, 30" ARMS

MODEL NUMBER	DESCRIPTION
830757.001B	Polar White
830757.001U	Black

## DOMETIC DELUXE PLUS WINDOW AWNING - STANDARD

The Dometic Deluxe Window Awning shields windows from the sun to help lower the temperature of the interior coach. Window awnings also protect the windows from light showers, so you can enjoy the fresh air without having a puddle in your mobile living space.

- Use with window height under 30"
- Easy to use strap
- Setup takes less than 10 seconds
- Rich, vibrant color patterns
- Hardware sold separately



### VINYL FABRIC

#### FADE PATTERN, METAL WEATHERSHIELD

85630(XX).(YYY)0-(Z)

(XX)=Fabric Color Code:

NR=Onyx  
NS=Sandstone  
NV=Maroon  
NT=Azure  
NW=Meadow Green  
NU=Bark

(YY)=Awning Length

030 = 30"    090 = 90"  
036 = 36"    096 = 96"  
042 = 42"    108 = 108"  
048 = 48"    114 = 114"  
054 = 54"    120 = 120"  
060 = 60"    132 = 132"  
066 = 66"    138 = 138"  
072 = 72"    144 = 144"  
078 = 78"    156 = 156"  
084 = 84"

(Z)=Endcap and Metal Weathershield Finish

Code:  
B=Polar White  
U=Black

### VINYL FABRIC

#### FADE PATTERN, VINYL WEATHERSHIELD

85604(XX).(YYY)0-(Z)

(XX)=Fabric Color Code:

NR=Onyx  
NS=Sandstone  
NV=Maroon  
NT=Azure  
NW=Meadow Green  
NU=Bark

(YY)=Awning Length

030 = 30"    090 = 90"  
036 = 36"    096 = 96"  
042 = 42"    108 = 108"  
048 = 48"    114 = 114"  
054 = 54"    120 = 120"  
060 = 60"    132 = 132"  
066 = 66"    138 = 138"  
072 = 72"    144 = 144"  
078 = 78"    156 = 156"  
084 = 84"

(Z)=Endcap and Metal Weathershield Finish

Code:  
B=Polar White  
U=Black

### WINDOW AWNING HARDWARE - STANDARD

#### MOUNTING BRACKET COLOR MATCHES ARMS, 18" ARMS

MODEL NUMBER	DESCRIPTION
830757.002B	Polar White
830757.002U	Black



## DOMETIC DELUXE PLUS WINDOW AWNING - TALL

The Dometic Deluxe Window Awning shields windows from the sun to help lower the temperature of the interior coach. Window awnings also protect the windows from light showers, so you can enjoy the fresh air without having a puddle in your mobile living space.

- Use with window height under 30"
- Easy to use strap
- Setup takes less than 10 seconds
- Rich, vibrant color patterns
- Hardware sold separately

### VINYL FABRIC FADE PATTERN, METAL WEATHERSHIELD

85620(XX).(YYY)0-(Z)		
(XX)=Fabric Color Code:	(YY)=Awning Length	(Z)=Endcap and Metal Weathershield Finish Code:
NR=Onyx	030 = 30"    084 = 84"	B=Polar White
NS=Sandstone	036 = 36"    090 = 90"	U=Black
NV=Maroon	042 = 42"    096 = 96"	
NT=Azure	048 = 48"    108 = 108"	
NW=Meadow Green	054 = 54"    114 = 114"	
NU=Bark	060 = 60"    120 = 120"	
	066 = 66"    132 = 132"	
	072 = 72"    138 = 138"	
	078 = 78"    144 = 144"	

### VINYL FABRIC FADE PATTERN, VINYL WEATHERSHIELD

85610(XX).(YYY)0-(Z)		
(XX)=Fabric Color Code:	(YY)=Awning Length	(Z)=Endcap and Metal Weathershield Finish Code:
NR=Onyx	030 = 30"	B=Polar White
NS=Sandstone	036 = 36"	U=Black
NV=Maroon	042 = 42"	
NT=Azure	048 = 48"	
NW=Meadow Green	054 = 54"	
NU=Bark	060 = 60"	
	066 = 66"	
	072 = 72"	

### WINDOW AWNING HARDWARE - TALL MOUNTING BRACKET COLOR MATCHES ARMS, 30" ARMS

MODEL NUMBER	DESCRIPTION
830757.001B	Polar White
830757.001U	Black

## DOMETIC FULL COVER SLIDETOPPER

The Dometic Full Cover SlideTopper comes in a case similar to the 9500 Case Awning. The awning protects your RV slideout room from unwanted debris.

- Reflects light to help keep interior cooler
- Extends and retracts automatically with your slideout room
- Anti-billow device keeps fabric rolled tight to help prevent wind damage
- Full cover case provides maximum protection
- Easy to clean, just hose off or wash with mild soap



## VINYL FABRIC

SOLID COLOR, FULL ALUMINUM PAINTED COVER

86196(XX).(YYY)(Z)

(XX)=Fabric Color Code:

CQ=Polar White

FJ=Black

(YY)=Awning Length

066 = 66"    138 = 138"

072 = 72"    144 = 144"

078 = 78"    150 = 150"

084 = 84"    156 = 156"

090 = 90"    162 = 162"

096 = 96"    168 = 168"

102 = 102"    174 = 174"

108 = 108"    180 = 180"

114 = 114"    186 = 186"

120 = 120"    192 = 192"

126 = 126"    198 = 198"

132 = 132"

(Z)=Endcap and Full

Cover Finish Code:

B=Polar White

U=Black

## WINDOW AWNING HARDWARE - TALL

MOUNTING BRACKET COLOR MATCHES ARMS, 30" ARMS

MODEL NUMBER	DESCRIPTION
3106992.062(X)	45° Brackets
3106992.070(X)	90° Brackets
3312418.000(X)	Anti-billowing Assembly
3107198.347(X)	Spacer Kit

(X)=Hardware Finish Code: B=Polar White, U=Black



## DOMETIC SLIDETOPPER EZ

The Dometic Elite SlideTopper shields your slideout room from debris, is made of durable, stain and mildew resistant vinyl fabric, and comes with a metal weathershield.

- Reflects light to help keep interior cooler
- Extends and retracts automatically with your slideout room
- Anti-billow device keeps fabric rolled tight to help prevent wind damage
- Pre-tensioned inner spring assembly
- Easy to clean, just hose off or wash with mild soap



### DOMETIC ELITE SLIDETOPPER EZ VINYL FABRIC - SOLID COLOR, METAL WEATHERSHIELD

### DOMETIC ELITE SLIDETOPPER EZ VINYL FABRIC - SOLID COLOR, VINYL WEATHERSHIELD

98401(XX).(YYY)(Z)

(XX)=Fabric Color Code:  
CQ=Polar White  
FJ=Black

(YY)=Awning Length  
066 = 66"    138 = 138"  
072 = 72"    144 = 144"  
078 = 78"    150 = 150"  
084 = 84"    156 = 156"  
090 = 90"    162 = 162"  
096 = 96"    168 = 168"  
102 = 102"    174 = 174"  
108 = 108"    180 = 180"  
114 = 114"    186 = 186"  
120 = 120"    192 = 192"  
126 = 126"    198 = 198"  
132 = 132"

(Z)=Endcap Finish Code:  
B=Polar White  
U=Black

98001(XX).(YYY)(Z)

(XX)=Fabric Color Code:  
CQ=Polar White  
FJ=Black

(YY)=Awning Length  
066 = 66"    138 = 138"  
072 = 72"    144 = 144"  
078 = 78"    150 = 150"  
084 = 84"    156 = 156"  
090 = 90"    162 = 162"  
096 = 96"    168 = 168"  
102 = 102"    174 = 174"  
108 = 108"    180 = 180"  
114 = 114"    186 = 186"  
120 = 120"    192 = 192"  
126 = 126"    198 = 198"  
132 = 132"

(Z)=Endcap Finish Code:  
B=Polar White  
U=Black

### SLIDETOPPER EZ HARDWARE

MODEL NUMBER	DESCRIPTION
9800018.401(X)	Tall
9800018.402(X)	Short

(X)=Hardware Finish Code: B=Polar White, U=Black

## DOMETIC VERANDA ROOM

The Dometic Veranda Room turns your RV awning into a comfortable screened-in enclosure that protects you from flying insects and provides additional living space. Veranda Room standard front panels create the desired room length and are ideal for use with both manual and power awnings. The super-durable, nonflammable fabric repels moisture and dries quickly to resist mildew.

- Fast and easy setup - just hang and zip!
- Universal attachments fit most patio awnings
- Super-durable, quick drying, nonflammable fabric and screen mesh
- Fits standard awning heights
- Compatible with manual and automatic awnings
- Lightweight and compact for easy storage



### STANDARD OR TALL? HOW TO MEASURE:

1. Measure distance from ground to the vehicle's awning rail

93" to 110" = Standard Height

111" to 120" = Tall Height

2. Use this chart to determine which panels are needed:

EXISTING AWNING SIZE	REQUIRED COMPONENTS
8' and 9'	Starter + 4' panel
10' and 11'	Starter + 4' panel + 2' panel
12' and 13'	Starter + 4' panel + 4' panel
14' and 15'	Starter + 8' panel + 2' panel
16' and 17'	Starter + 8' panel + 4' panel
18' and 19'	Starter + 8' panel + 4' panel + 2' panel
20' and 21'	Starter + 8' panel + 8' panel
22' and 23'	Starter + 8' panel + 8' panel + 2' panel
24' and 25'	Starter + 8' panel + 8' panel + 4' panel

### DOMETIC VERANDA ROOM

MODEL NUMBER	DESCRIPTION
935000.140	Starter Kit - Standard*
935002.120	2' Panel - Standard
935004.120	4' Panel - Standard
935008.120	8' Panel - Standard
935000.150	Starter Kit - Tall*
935002.130	2' Panel - Tall
935004.130	4' Panel - Tall
935008.130	8' Panel - Tall
3106384.005	25 pk. Fasteners**

\*Starter kit includes: One left end panel, one right end panel, one door panel, skirting, wheel-well cover, hardware kit and zippered storage bag.

\*\*Replacement Part



## DOMETIC VERANDA SHADE

- Installation is quick, easy and doesn't require any tools!
- Slide Veranda Shade into the utility slots of most awning rollers for extra shade
- The vinyl-coated mesh fabric is weather resistant
- Secure fit with brass grommets that allow you to stake it into the ground (nylon elastic tie-downs included)
- Fabric colors coordinate with other Dometic awning products

Ref. nm. 930010.G10 - 10 ft, Burgundy  
Ref. nm. 930010.P10 - 10 ft, Coffee  
Ref. nm. 930010.H10 - 10 ft, Blue  
Ref. nm. 930015.G10 - 15 ft, Burgundy  
Ref. nm. 930015.P10 - 15 ft, Coffee  
Ref. nm. 930015.H10 - 15 ft, Blue



## DOMETIC POWER WAND ASSEMBLY

- Hassle-free hard wiring
- Lithium ion battery powered
- Simple installation for plug-and-play use
- Easier option for upgrading to power awning
- Includes 110V charger with LED status light
- 50-60 awning operations on full battery

Ref. nm. 3316736.000



## DOMETIC POWER AWNING PRO KIT

- Use with any power awning on the market
- Open/close the awning remotely
- Advanced wind sensor automatically closes the awning in high winds
- Control awning's LED lights remotely (on/off/dim)
- Ignition interlock prevents accidental opening while RV is moving

Ref. nm. 3316554.002 - White

Ref. nm. 3316554.005 - Black



## DOMETIC OPTIMA TENSION RAFTER SYSTEM

This tension rafter supports and stabilizes the awning. The universal system fits any brand of automatic roll-up awning.

- Supports and stabilizes the awning – open or closed
- Completely self-storing design saves space
- Easy to install and operate
- Provides ground support when the awning is in the patio position
- Keeps canopy tensioned
- Fits any brand of automatic roll-up awning

Ref. nm. 930042.000 - Tension Rafter - Satin

Ref. nm. 930043.000 - Ground Support - Satin

Ref. nm. 930039.500(X) - Optima System

Ref. nm. 930042.500(X) - Tension Rafter

Ref. nm. 930043.500(X) - Ground Support

Ref. nm. 930042.500(X) - Tension Rafter

(X)=Hardware Finish Code:

B=Polar White, U=Black



## AWNING PARTS AND ACCESSORIES ACCESSORIES/RAFTER SYSTEM

MODEL NUMBER	DESCRIPTION	MODEL NUMBER	DESCRIPTION
930008	Adjustment knobs, 2 per pkg.	143002P058	Rivet, Semi-tube, 1/4" x 2.56", 2 per pkg.
830152.102	Awning pull rod, 46", 1 per pkg.	143002P059	Rivet, Semi-tube, 5/16" x 2.59", 6 per pkg.
930006	Coupler Pins, 2 per pkg.	830472P002	Slider catch assembly, 2 per pkg.
930061	Cradle support kit, 1 per pkg.	830463P	Slider assembly, 1 per pkg.
3310783.000	Crank tool, 1 per pkg.	3107214.003	Tall window strap ext
830644	Deluxe handle, 1 per pkg.	930041	Travel locks, 2 per pkg.
3104745P009	Door edge guard, 1 per pkg.	3313343.000	Travel lock, 1 per pkg.
930004	Door guard, 1 per pkg.	3310290.006	WeatherPro wind sensor
930037	Hanger awn, 7 per pkg.	3108399.035(X)	RH Std. Torsion for 8500/9000
930024	Lock pins, 2 per pkg.	3108398.029(X)	RH HD* Torsion for 8500/9000
940001	Pull strap, 1 per pkg.	3108399.019(X)	LH Std. Torsion for 8500/9000
3107025P003	Pull strap hanger hook, 1 per pkg.	3108398.011(X)	LH HD* Torsion for 8500/9000
3307834.006	Pull strap, 28", 1 per pkg.	3108706.171(X)	RH Torsion for SlideTopper
830023P001	Push button assembly, 2 per pkg.	3108706.189(X)	LH Torsion for SlideTopper
113008P	Rivet, Oscar, 3/16" x 1", 6 per pkg.	3309468.001(X)	RH Torsion for Window Awning 78" down
308171P022	Rivet, Pop, 3/16" x 3/8", 6 per pkg.	3309467.003(X)	LH Torsion for Window Awning 78" down
143002P041	Rivet, Semi-tube, 1/4" x 1-1/2", 2 per pkg.	3309464.000(X)	RH Torsion for Window Awning 84" up
143002P053	Rivet, Semi-tube, 1/4" x 1-3/8", 6 per pkg.	3309465.007(X)	LH Torsion for Window Awning 84" up
143002P051	Rivet, Semi-tube, 3/16" x 1-1/8", 2 per pkg.		

(X)=Finish Color Code: B=Polar White, U=Black

Note: HD torsions only used on steel roller tubes 18" and longer. Aluminum tubes use standard torsions on any size.

# SAFELY SECURE YOUR POWERCHANNEL ACCESSORIES

The Dometic PowerChannel Rail is perfect for installing your Dometic PowerChannel accessories, like the Dometic PowerChannel Fan, Bluetooth Speaker, and Light. This patented solution is easy to retrofit without any visible cables and allows multiple accessories to be used simultaneously for maximum convenience.



## DOMETIC POWERCHANNEL 2 & 4 FT RAIL

The Dometic PowerChannel Hardware Rail is perfect for installing your Dometic PowerChannel accessories. This patented solution is easy to retrofit without any visible cables.

- Accessories fasten to rail with a simple quarter turn
- Patented solution, easy to retrofit without any visible cables
- Simultaneously connect multiple accessories

Ref. nm. 3316282.003U

Ref. nm. 3316282.004U

Ref. nm. 3316622.001U



12 VDC



### DOMETIC POWERCHANNEL USB CHARGER ACCESSORY

- Charging convenience, one 12V port, two USB ports and device strap
- Base features two way adjustment
- Simple quarter turn fastening to power rail
- USB Charger can be used simultaneously with other accessories

Ref. nm. 3316977.000



12 VDC



### DOMETIC POWERCHANNEL FAN ACCESSORY

- Base features two way adjustment for directional airflow
- Power button with blue LED backlight
- Simple quarter turn fastening to power rail
- Weather and UV resistant
- Fan can be used simultaneously with other accessories

Ref. nm. 3316972.000



12 VDC



### DOMETIC POWERCHANNEL DUAL SPEAKER ACCESSORY

- Bluetooth speaker
- Excellent sound for enjoyable, continuous listening
- Simple quarter turn fastening to power rail
- Base features two way adjustment for convenience
- Dual Speaker can be used simultaneously with other accessories

Ref. nm. 3316974.000



12 VDC



### DOMETIC POWERCHANNEL SPEAKER ACCESSORY

- Pairs to your smartphone, tablet or other Bluetooth enabled devices
- Connects wirelessly from a distance of 30 yards or more
- Simple quarter turn fastening to power rail
- Base features two way adjustment for convenience
- Power button with blue LED backlight

Ref. nm. 3316973.000



12 VDC



### DOMETIC POWERCHANNEL FLOODLIGHT ACCESSORY

- Base features two way adjustment for wide range light coverage
- Simple quarter turn fastening to power rail
- Power button with blue LED backlight
- LED Floodlight can be used simultaneously with other accessories

Ref. nm. 3316976.000



12 VDC



### DOMETIC POWERCHANNEL SPOTLIGHT ACCESSORY

- Base features two way adjustment for precise light coverage
- Simple quarter turn fastening to power rail
- Power button with blue LED backlight
- LED Spotlight can be used simultaneously with other accessories

Ref. nm. 3316975.000

/ COOKING  
/ COOLERS  
/ REFRIGERATION

# FOO BEVE





# D & RAGE



# MOBILE KITCHEN CONCEPTS

**ENJOY GREAT FOOD WHILE ON VACATION**

That's what makes a great vacation – cooking and eating together, without clock watching. Delicious meals improvised with local ingredients. Sitting around the table for hours on end, chatting... and enjoying the food. Dometic helps you treat yourself and your loved ones when you're on the move with a complete range of ideas for your mobile kitchen.



## COOKING

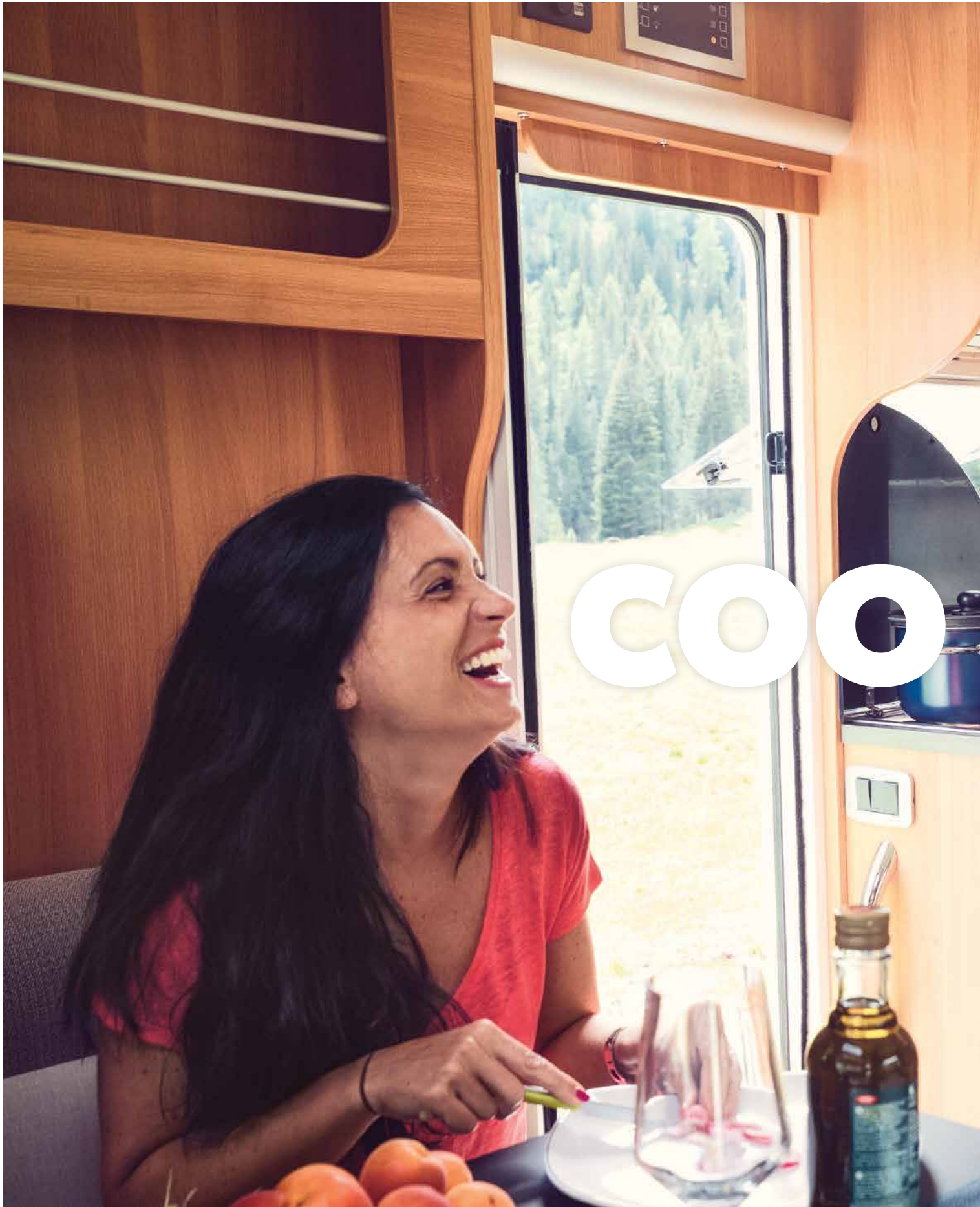
Why do without familiar ways of cooking food just because you're on the move? Dometic gives you a wide choice of options of ovens and stoves.

## COOLERS

If you have access to a power source and you plan on being away for an extended period of time, we provide a range of high performance powered cooling boxes to meet your needs. Because these travel coolers and warmers are compatible with almost all onboard or main power supplies, you can use them anywhere in the world. And depending on where you will be staying, you can choose between different outdoor cooler technologies: thermoelectric or compressor.

## REFRIGERATORS

With all the convenience of a household appliance – including freeze-capability – our absorption refrigerators are indispensable travel companions. Compact, silent and extremely durable, these RV refrigerators and freezers promise a long life of steady cooling in fluctuating temperatures.







# KING

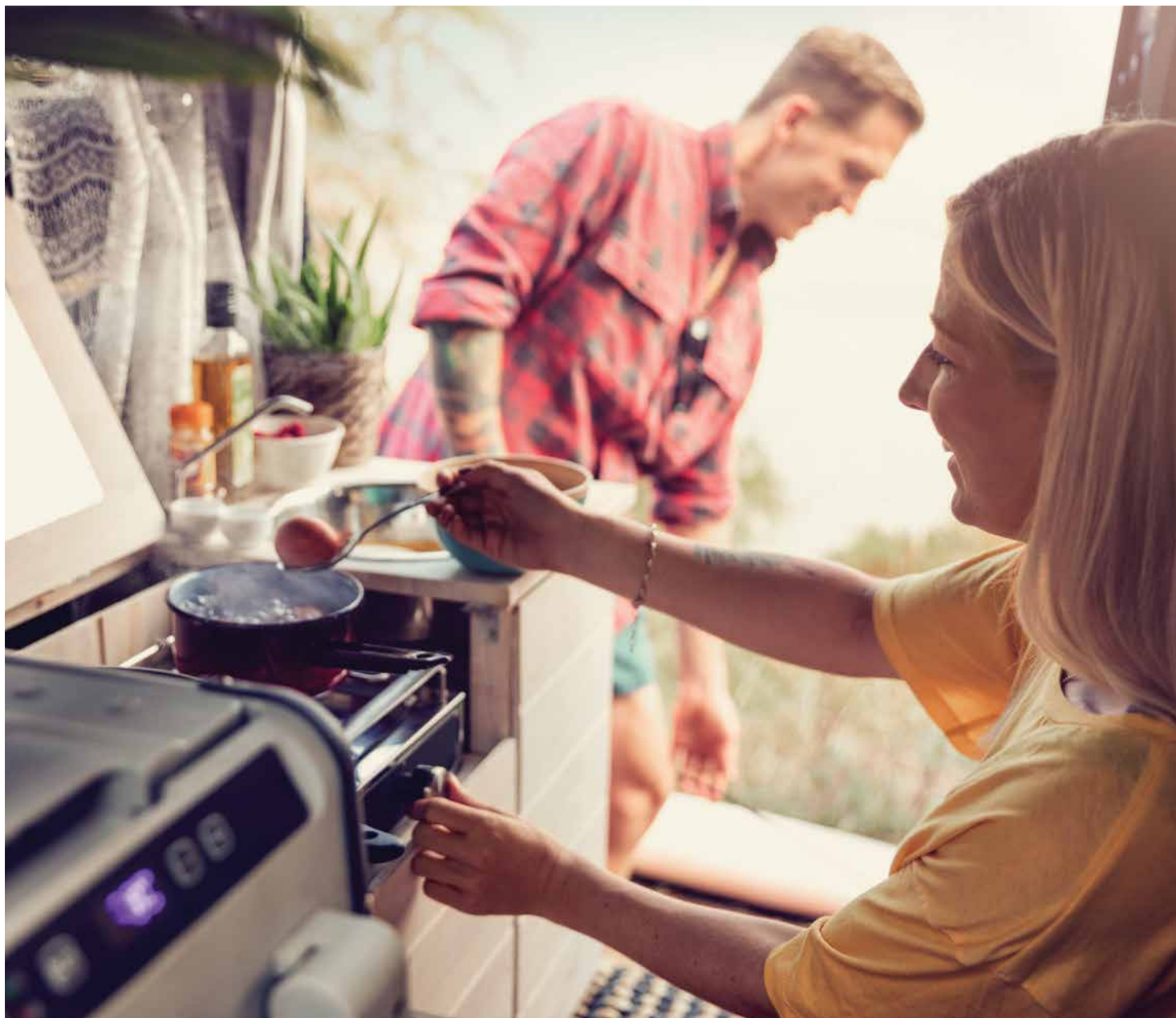
CLIMATE

**FOOD & BEVERAGE**

HYGIENE & SANITATION

SAFETY & SECURITY

POWER & CONTROL



# STAY FOR DINNER

## SOLUTIONS FOR A MOBILE MASTER CHEF

You may be far from home, but that doesn't mean you can't enjoy a delicious home-cooked meal – using local ingredients. Dometic's cooking solutions help make your journey even more pleasurable with a range of innovative products for your camping kitchen.

One of the challenges of travel cooking is having enough room to do the job. Making the most of very little space is something our designers think about a lot. That's why our cooktop and sink combinations with a glass lid are so popular. You lift the lid up when it's time to cook or clean and when the lid is lowered you have an extra surface for preparation. Voilà.



## COOKING

It doesn't matter what you want to make, or how skilled you are, Dometic's range of gas ovens will keep you well fed on the journey. Our built-in models – with their easily adjusted settings – will help you bake a delicious cake, make a succulent roast or perhaps prepare a crispy chicken. Our gas ovens are equally dependable. If space is in short supply, we provide extra narrow models. All ovens come with a safety lock.

## COOKTOPS

The Dometic drop in cook top has two burner capability, providing you the ability to cook simultaneously. Easy to clean, and is designed to fit your mobile lifestyle! The stylish Dometic Induction Cooktop heats faster than any gas cooktops. The ultra-slim surface is easy to clean, while adjustable power settings enable cooking with precision.





## DOMETIC 17" & 21" RANGE

Enjoy the comfort of home cooking while you're on the road. The Dometic 3 Burner Range has a centralized high output burner and improved flame distribution. The one-piece cast iron or flat wire grate construction gives 33% more usable surface area for pots and pans. With an ergonomic oven handle and optional stainless steel insert.

- Piezo igniter makes lighting the range easier
- Sealed burners make cleaning easier
- Linear Burner Valves are easily adjusted on all burners for a wide range of flame settings
- Powerful 9,000 BTU front burner
- 6,500 BTU rear burners are great for simultaneously cooking side dishes
- Recessed control knobs
- Optional flush glass lid or steel top maximizes work space when not in use



## DOMETIC SLIDE-IN COOKTOP

- Linear flow gas valves allow you to cook with precision
- One-piece surface and sealed burners make cleaning easy
- 9,000 BTU burner offers plenty of power for cooking all types of food
- The two 6,500 BTU burners are perfect for preparing your side dishes simultaneously
- One-piece full width flat wire or optional cast iron grate increase total cooking area

## DOMETIC DROP-IN COOKTOP

- Linear flow gas valves allow you to cook with precision
- One-piece surface and sealed burners make cleaning easy
- 9,000 BTU burner offers plenty of power for cooking all types of food
- The two 6,500 BTU burners are perfect for preparing your side dishes simultaneously
- One-piece full width flat wire or optional cast iron grate increase total cooking area



## DOMETIC CI20 INDUCTION COOKTOP

- Hassle-free, All electric operation
- One solid piece of glass is durable, easy-to-clean, and has an elegant appearance
- 10 power level settings with 150 °F - 450 °F temperature range
- Ultra-slim surface stands less than 3/16" above the countertop
- Energy efficient burners deliver 1800 watts max. power combined (1,500 watts max. power to single burner)

## DOMETIC RANGES

MODEL NUMBER	DESCRIPTION	MODEL NUMBER	DESCRIPTION
50422	Dometic 3-Burner 17" Range, Piezo Ignition, Black, Flat Wire Grate	50423	Dometic 3-Burner 17" Range, Piezo Ignition, Black, Cast Iron Grate
50429	Dometic 3-Burner 17" Range, Piezo Ignition, Stainless, Flat Wire Grate	50430	Dometic 3-Burner 17" Range, Piezo Ignition, Stainless, Cast Iron Grate
50442	Dometic 3-Burner 21" Range, Piezo Ignition, Black, Flat Wire Grate	50443	Dometic 3-Burner 21" Range, Piezo Ignition, Black, Cast Iron Grate
50447	Dometic 3-Burner 21" Range, Piezo Ignition, Stainless, Flat Wire Grate	50448	Dometic 3-Burner 21" Range, Piezo Ignition, Stainless, Cast Iron Grate

## DOMETIC SLIDE-IN COOKTOPS

MODEL NUMBER	DESCRIPTION	MODEL NUMBER	DESCRIPTION
50305	Dometic 3-Burner Slide-In S31 - BMFBU, Black, Match Light, Flat Grate	50309	Dometic 3-Burner Slide-In S31 - SPCMU, Stainless Steel, Piezo Ignitor, Cast Grate
50313	Dometic 3-Burner Slide-In S31 - BPCMU, Black, Piezo Ignitor, Cast Grate Cooktop,	50308	Dometic 3-Burner Slide-In S31 - SPFMU, Stainless Steel, Piezo Ignitor, Flat Grate
50306	Dometic 3-Burner Slide-In S31 - BPFBU, Black, Piezo Ignitor, Flat Grate		

## DOMETIC DROP-IN COOKTOPS

MODEL NUMBER	DESCRIPTION	MODEL NUMBER	DESCRIPTION
50210	Dometic 2-Burner Drop-In D21 Cooktop, Black, Piezo Ignition, Wire Grate	50215	Dometic 2-Burner Drop-In D21 Cooktop, Stainless Steel, Battery Ignition, Wire Grate
50211	Dometic 2-Burner Drop-In D21 Cooktop, Black, Battery Ignition, Wire Grate	50216	Dometic 2-Burner Drop-In D21 Cooktop, Stainless Steel, Electronic Ignition, Cast Iron Grate
50214	Dometic 2-Burner Drop-In D21 Cooktop, Stainless Steel, Piezo Ignition, Wire Grate		

## DOMETIC CI 20 INDUCTION COOKTOP

MODEL NUMBER	DESCRIPTION
56000	Dometic CI 20 Induction Cooktop, Black, 2-Burner, All Electric Operation

## DOMETIC BI-FOLD COVERS

MODEL NUMBER	DESCRIPTION	MODEL NUMBER	DESCRIPTION
50870	Glass Bi-Fold Cover, Gray	50469	Steel Bi-Fold Cover, Stainless
50871	Glass Bi-Fold Cover, Black	50470	Steel Bi-Fold Cover, Black





# LERS

CLIMATE

FOOD & BEVERAGE

HYGIENE & SANITATION

SAFETY & SECURITY

POWER & CONTROL



# STAY REFRESHED

## COOLERS - RELIABILITY BUILT IN

Whether you're planning to get away for a few hours or a few days, a reliable cooler is a must. We're sure you will find what you need here.

Dometic was built on an idea – and we've never stopped innovating. Our CFX Series portable car and camping coolers won 2015's Best Overall Tailgate Product. That same year, we sold 1.7 million units.





## POWERED COOLERS

If you have access to a power source and you plan on being away for an extended period of time, we provide a range of high performance powered cooling boxes to meet your needs. Because these travel coolers and warmers are compatible with almost all onboard or main power supplies, you can use them anywhere in the world. And depending on where you will be staying, you can choose between a couple different outdoor cooler technologies: thermoelectric or compressor.

## ICE CHESTS

If you are planning a shorter trip – perhaps just a few days – we recommend you check out our passive (non-powered) coolers. Equipped with extremely effective insulation, these portable coolers will keep your groceries, fish, bait, wild game and other perishables fresh for several days – depending on use and weather conditions.





QUIET



12/24 V DC



100 - 240 V AC

# DOMETIC CFX

THE COMPACT POWERED COOLER FOR EVERY ADVENTURE



Compressor cooling technology, used in Dometic's CFX series, offers unrivaled cooling power. But how does it work? Well, it relies on a refrigerant that changes from a liquid to gaseous state in the evaporator. The evaporation process extracts heat from the interior of the cooling unit, causing the temperature to drop. The compressor draws in the refrigerant, compresses it and passes it on to the condenser. From here, the absorbed heat is released into the atmosphere. The refrigerant liquefies and flows back to the evaporator, where the cycle begins again. The result of this is an excellent cooling performance, capable of deep-freezing, even at extreme ambient temperatures.



# STAY COOL!

Fitted with heavy-duty features like reinforced corners, stainless steel hinges and a robust lid lining, the hi-tech coolers in the CFX series can withstand the most demanding of loads. Even so, they are remarkably lightweight and easy to transport. The CFX 35W to CFX 100W models give you the convenient option of controlling and monitoring the cooling temperature by WiFi app.

## KEY BENEFITS

- Advanced compressor electronics ensure ultra-low power consumption using AC, DC, and solar power - enjoy the freedom to go off-grid!
- Enjoy 60% more storage capacity in the same exterior space!
- Compared to similar capacity ice chest using recommended ice/content ratio.
- 3 Stage Dynamic Battery Protection System automatically
- shuts the product off to prevent a dead car starter battery and improves car battery performance.
- Precisely control and monitor temperature +/- 2° F via a digital display or WiFi App.
- Energy-efficient LED interior light and removable wire baskets with dividers for optimal content organization.



## TEMPERATURE CONTROL VIA WIFI APP

All CFX powered coolers (except CFX 28) can be conveniently controlled by smartphone. Our WiFi app gives you plenty of options. You can set different cooling temperatures, battery protection levels and temperature alarms. Or switch your cooler on and off from a distance.

## KEY BENEFITS

- Temperature setting via slider or button
- Programming of battery protection levels and temperature alarms
- Display of current temperature, energy source, voltage and warning messages
- ON/OFF switch for cooler (or individual compartments of a dual-zone model)
- Android and iOS version available



## LED LIGHT

Energy efficient LED interior light



## ROBUST

Heavy-duty design with reinforced corners and a robust closing mechanism



## EASY TO CARRY

Space-saving folding and detachable carrying handles



## DOMETIC CFX 75DZW

The CFX is an award winning powered cooler that combines durable, deep freeze capabilities with ultra-low power consumption to bring fresh food and cold drinks anywhere.

- 113 Can/70l Capacity, deep-freeze to -7° F, dual zone cooling compartment
- Dimensions: 18.6”H x 34.9”W x 19.5”D
- Advanced compressor electronics ensure ultra-low power consumption using AC, DC, and solar power - enjoy the freedom to go off-grid!
- Enjoy 60% more storage capacity in the same exterior space! Compared to similar capacity ice chest using recommended ice/content ratio.
- 3 Stage Dynamic Battery Protection System automatically shuts the product off to prevent a dead car starter battery and improves car battery performance.
- Precisely control and monitor temperature +/- 2° F via a digital display or WiFi App.
- Dual Zone (DZ) models enable independently variable temperature control so you can cool and freeze simultaneously.



## DOMETIC CFX 28

- 43 Can/26l Capacity, deep-freeze to -7° F, single zone cooling compartment
- Dimensions: 16.7” H x 24.4” W x 13.5” D
- Advanced compressor electronics ensure ultra-low power consumption using AC, DC, and solar power - enjoy the freedom to go off-grid!
- Enjoy 60% more storage capacity in the same exterior space! Compared to similar capacity ice chest using recommended ice/content ratio.



## DOMETIC CFX 35W

- 47 Can/32l Capacity, deep-freeze to -7° F, single zone cooling compartment
- Dimensions: 16.2” H x 27.2” W x 15.7” D
- Advanced compressor electronics ensure ultra-low power consumption using AC, DC, and solar power - enjoy the freedom to go off-grid!
- Enjoy 60% more storage capacity in the same exterior space! Compared to similar capacity ice chest using recommended ice/content ratio.



## DOMETIC CFX 40W

- 60 Can/38l Capacity, deep-freeze to -7° F, single zone cooling compartment
- Dimensions: 18.1” H x 27.2” W x 15.7” D
- Advanced compressor electronics ensure ultra-low power consumption using AC, DC, and solar power - enjoy the freedom to go off-grid!
- Enjoy 60% more storage capacity in the same exterior space! Compared to similar capacity ice chest using recommended ice/content ratio.



CONTROLLED VIA WIFI APP

### DOMETIC CFX 50W

- 72 Can/46l Capacity, deep-freeze to -7° F, single zone cooling compartment
- Dimensions: 18.5" H x 28.5" W x 17.9" D
- Advanced compressor electronics ensure ultra-low power consumption using AC, DC, and solar power - enjoy the freedom to go off-grid!
- Enjoy 60% more storage capacity in the same exterior space! Compared to similar capacity ice chest using recommended ice/content ratio.



CONTROLLED VIA WIFI APP

### DOMETIC CFX 65W

- 106 Can/60l Capacity, deep-freeze to -7° F, single zone cooling compartment
- Dimensions: 22" H x 28.5" W x 17.9" D
- Advanced compressor electronics ensure ultra-low power consumption using AC, DC, and solar power - enjoy the freedom to go off-grid!
- Enjoy 60% more storage capacity in the same exterior space! Compared to similar capacity ice chest using recommended ice/content ratio.



CONTROLLED VIA WIFI APP

### DOMETIC CFX 95DZW

- 133 Can/85l Capacity, deep-freeze to -7° F, dual zone cooling compartment
- Dimensions: 18.6" H x 37.7" W x 20.9" D
- Advanced compressor electronics ensure ultra-low power consumption using AC, DC, and solar power - enjoy the freedom to go off-grid!
- Enjoy 60% more storage capacity in the same exterior space! Compared to similar capacity ice chest using recommended ice/content ratio.



CONTROLLED VIA WIFI APP

### DOMETIC CFX 100W

- 146 Can/88l Capacity, deep-freeze to -7° F, single zone cooling compartment
- Dimensions: 18.6" H x 37.7" W x 20.9" D
- Advanced compressor electronics ensure ultra-low power consumption using AC, DC, and solar power - enjoy the freedom to go off-grid!
- Enjoy 60% more storage capacity in the same exterior space! Compared to similar capacity ice chest using recommended ice/content ratio.



### DOMETIC CFX FRIDGE SLIDE

Add slide out convenience to your fridge or freezer with one of our slides. Not only does it provide easy access for loading and unloading, it also keeps it secured.

- Enables optimum access and secure storage.
- Heavy-duty powder-coated steel construction for years of reliable use.
- Ball bearing rollers ensure easy use when fully loaded - impressive 220 lb load capacity.



### DOMETIC CFX INSULATED COVER

The CFX thermal insulated covers improve compressor efficiency and reduces power usage in extreme heat environments while protecting against scuffs and scratches.

- Thermal insulation improves compressor efficiency and reduces power usage in hot climates
- Reflective fabric provides thermal barrier against heat from direct sunlight
- High-strength nylon fabric protects against direct impacts, scuffs, scratches

## KEEP IT COOL

With a handy shoulder strap and carry handles, the CF Series is a range of compact coolers that you can take anywhere. Super slim and easy to fit in the smallest of spaces, the CF coolers can deep-freeze food and drinks with minimal power consumption. Offering greater convenience the CF Series is even lighter than its predecessor thanks to its new compact compressor.

### KEY BENEFITS

- 12/24 V DC and 100-240 V AC connection
- With the ability to utilize multiple power sources you can take your refrigerator/freezer with you
- Operates as a refrigerator or freezer
- Lightweight and portable
- Battery monitor with low-voltage shut-off protects against a dead battery
- Memory feature maintains presets if the system is turned off



12/24 V DC



100 - 240 V AC



### DOMETIC CF 110

A true favorite for car camping and RVs. With a durable construction for use in harsh conditions, its powerful compressor cooling technology ensures dependable refrigeration and freezing while you're on the road.

- 144 Can/106l Capacity, freeze to 0°, single zone cooling compartment
- Dimensions: 21.9" H x 31.1" W x 19.6" D
- No need to buy ice again - refrigerate or freeze down to 0°F.
- Low-power consumption using AC or DC allows you to go the distance without worrying about a dead battery.
- Impact-resistant polymer construction with fully insulated and removable lid for enhanced performance.
- Enjoy 60% more storage capacity in the same exterior space! Compared to similar capacity ice chest using recommended ice/content ratio.
- Dynamic Battery Protection System automatically shuts the product off to prevent a dead starter battery and improves battery performance.



### DOMETIC CDF 11

- 13 Can/10.5l Capacity, freeze to 0°, single zone cooling compartment
- Dimensions: 14.4" H x 21.3" W x 9.3" D
- No need to buy ice again - refrigerate or freeze down to 0°F
- Low-power consumption using DC allows you to go the distance without worrying about a dead battery
- Impact-resistant polymer construction with fully insulated and removable lid for enhanced performance



### DOMETIC CF 18

- 23 Can/18l Capacity, freeze to 0°, single zone cooling compartment
- Dimensions: 16.3" H x 18.4" W x 11.9" D
- No need to buy ice again - refrigerate or freeze down to 0°F
- Low-power consumption using DC allows you to go the distance without worrying about a dead battery
- Impact-resistant polymer construction with fully insulated and removable lid for enhanced performance



### DOMETIC CF 25

- 27 Can/23l Capacity, freeze to 0°, single zone cooling compartment
- Dimensions: 16.73" H x 21.65" W x 10.24" D
- No need to buy ice again - refrigerate or freeze down to 0°F
- Low-power consumption using DC allows you to go the distance without worrying about a dead battery
- Impact-resistant polymer construction with fully insulated and removable lid for enhanced performance



### DOMETIC CF 35

- 41 Can/31l Capacity, freeze to 0°, single zone cooling compartment
- Dimensions: 15.2" H x 22.9" W x 14.2" D
- No need to buy ice again - refrigerate or freeze down to 0°F
- Low-power consumption using AC or DC allows you to go the distance without worrying about a dead battery
- Impact-resistant polymer construction with fully insulated and removable lid for enhanced performance



### DOMETIC CF 40

- 47 Can/37l Capacity, freeze to 0°, single zone cooling compartment
- Dimensions: 17.6" H x 22.9" W x 14.2" D
- No need to buy ice again - refrigerate or freeze down to 0°F
- Low-power consumption using AC or DC allows you to go the distance without worrying about a dead battery
- Impact-resistant polymer construction with fully insulated and removable lid for enhanced performance



### DOMETIC CF 50

- 68 Can/47l Capacity, freeze to 0°, single zone cooling compartment
- Dimensions: 18.9" H x 24.8" W x 14.2" D
- No need to buy ice again - refrigerate or freeze down to 0°F
- Low-power consumption using AC or DC allows you to go the distance without worrying about a dead battery
- Impact-resistant polymer construction with fully insulated and removable lid for enhanced performance



## DOMETIC CF 80

A true favorite for car camping and RVs. With a durable construction for use in harsh conditions, its powerful compressor cooling technology ensures dependable refrigeration and freezing while you're on the road.

- 103 Can/80l Capacity, freeze to 0°, single zone cooling compartment
- Dimensions: 17.9" H x 31.1" W x 19.6" D
- No need to buy ice again - refrigerate or freeze down to 0°F
- Low-power consumption using AC or DC allows you to go the distance without worrying about a dead battery
- Impact-resistant polymer construction with fully insulated and removable lid for enhanced performance
- Enjoy 60% more storage capacity in the same exterior space! Compared to similar capacity ice chest using recommended ice/content ratio
- Dynamic Battery Protection System automatically shuts the product off to prevent a dead starter battery and improves battery performance



## DOMETIC CF INSULATED COVERS

- Thermal insulation improves compressor efficiency and reduces power usage in hot climates
- Reflective fabric protects against heat from direct sunlight
- High-strength nylon fabric protects against moisture, scuffs, and scratches
- Allows for optimum compressor ventilation
- Easily access your food and drinks with hook-and-loop lids
- Exterior pockets offer convenient storage for small items



## DOMETIC CC 32

- 39 Can/31l Capacity, refrigerate to 4°, single zone cooling compartment
- Dimensions: 16.1" H x 23" W x 14.4" D
- Refrigerate food and drink to 4°F
- AC to DC power for convenient use at home or on the go!
- Lightweight and durable polymer construction is ideal for portable use.
- Increased storage capacity in the same amount of space, compared to cooling with ice



## DOMETIC CC 40

- 55 Can/38l Capacity, refrigerate to 4°, single zone cooling compartment
- Dimensions: 17.5" H x 23" W x 14.4" D
- Refrigerate food and drink to 4°F
- AC to DC power for convenient use at home or on the go!
- Lightweight and durable polymer construction is ideal for portable use.
- Increased storage capacity in the same amount of space, compared to cooling with ice



# MORE COOL FUN ON THE MOVE

TropiCool thermoelectric coolers feature intelligent special electronics with a power-save circuit and memory function in a dust- and moisture-proof keypad with LED temperature display. The sturdy handle folds down when not in use. Innovative internal fan is switched off with micro switch when the unit is opened. For added convenience and portability the cooler can be powered by an AC or DC power source.

## KEY BENEFITS

- Thermoelectric technology keeps content cool or warm
- For use with 12V power outlet only
- Lightweight design for easy portability
- Control and monitor the temperature via a 7-stage setting
- Memory function remembers your preferences, even after the device is switched off



12/24 V DC



100 - 240 V AC



HEATING &  
COOLING  
MODE



## DOMETIC TROPICOOOL TC14

- 13.5l Capacity, cooling to 32°, single zone cooling compartment
- Dimensions: 12.9" H x 17.7" W x 11.9" D
- Thermoelectric technology keeps contents cool or warm
- For use with 12V power outlet only
- Lightweight design for easy portability
- Control and monitor the temperature via a 7-stage setting
- Memory function remembers your preferences, even after the device is switched off



## DOMETIC TROPICOOOL TC21

- 20l Capacity, cooling to 32°, single zone cooling compartment
- Dimensions: 16.5" H x 17.7" W x 11.9" D
- Thermoelectric technology keeps content cool or warm
- For use with 12V power outlet only
- Lightweight design for easy portability
- Control and monitor the temperature via a 7-stage setting
- Memory function remembers your preferences, even after the device is switched off



## DOMETIC TROPICOOOL TC35

- 33l Capacity, cooling to 32°, single zone cooling compartment
- Dimensions: 18.1" H x 21.7" W x 14.8" D
- Thermoelectric technology keeps content cool or warm
- For use with 12V power outlet only
- Lightweight design for easy portability
- Control and monitor the temperature via a 7-stage setting
- Memory function remembers your preferences, even after the device is switched off

## STAY COOL!

Weighing in at under 19 kg, the CFF45 stretches every one of its 43.5 liters of volume - resulting in one of Dometic's most economical portable fridge/freezers yet. The interior storage allocation was at the forefront of the Dometic CFF45's design, with the result providing a more uniform temperature distribution throughout the interior. This coupled with the generous insulation results in moderate power draw from the battery, making the Dometic CFF45 an excellent choice for adventurers truly living mobile.

### KEY BENEFITS

- Double-sided opening lid
- User-friendly lid hinge design
- Fits standard Riesling bottle upright
- Optimized storage volume with a single interior compartment for either cooling or freezing
- Generous insulation for better cooling performance and energy efficiency
- Precisely control and monitor temperature +/- 2°F via a digital display or WiFi App
- Energy-efficient LED interior light and removable wire baskets with dividers for optimal content organization

**NEW!**  
DOMETIC CFF  
POWERED COOLERS



### NEW! DOMETIC CFF 35

- 34.3 l of storage of convenient cooling
- Dimensions: 16.02" H x 23.23" W x 15.67" D
- Energy efficient design provides fast and excellent cooling and freezing, even in extremely high outside temperatures
- Can be set between 0°F and 50°F
- Optimized footprint allows it to be used with the CFX-SLD35/40 fridge slide
- Double sided opening lid
- Compact design ensures excellent portability



### NEW! DOMETIC CFF 40

- 43.5 l of storage for convenient cooling
- Dimensions: 18.60" H x 23.23" W x 15.67" D
- Energy efficient design provides fast and excellent cooling and freezing, even in extremely high outside temperatures
- Can be set between 0°F and 50°F
- Optimized footprint allows it to be used with the CFX-SLD35/40 fridge slide
- Double sided opening lid
- Compact design ensures excellent portability

## DOMETIC CFX SERIES POWERED COOLERS

MODEL NUMBER	DESCRIPTION	MODEL NUMBER	DESCRIPTION
CFX-28	Domestic CFX 28 Single Zone Powered Cooler	CFX-65W	Domestic CFX 65W Single Zone Powered Cooler
CFX-35W	Domestic CFX 35W Single Zone Powered Cooler	CFX-75DZW	Domestic CFX 75DZW Single Zone Powered Cooler
CFX-40W	Domestic CFX 40W Single Zone Powered Cooler	CFX-95DZW	Domestic CFX 95DZW Single Zone Powered Cooler
CFX-50W	Domestic CFX 50W Single Zone Powered Cooler	CFX-100W	Domestic CFX 100W Single Zone Powered Cooler

## DOMETIC CF SERIES POWERED COOLERS

MODEL NUMBER	DESCRIPTION	MODEL NUMBER	DESCRIPTION
CDF11-DC-A	Domestic CDF 11 Powered Cooler	CF40-ACDC-A	Domestic CF 40 Powered Cooler
CF18-DC-A	Domestic CF 18 Powered Cooler	CF50-ACDC-A	Domestic CF 50 Powered Cooler
CF25-DC-A	Domestic CF 25 Powered Cooler	CF80-ACDC-A	Domestic CF 80 Powered Cooler
CF35-ACDC-A	Domestic CF 35 Powered Cooler	CF110-ACDC-A	Domestic CF 110 Powered Cooler

## DOMETIC CC SERIES POWERED COOLERS

MODEL NUMBER	DESCRIPTION	MODEL NUMBER	DESCRIPTION
CC32-ACDC	Domestic CC 32 Powered Cooler	CC40-ACDC	Domestic CC 40 Powered Cooler

## DOMETIC TROPICOOOL POWERED COOLERS

MODEL NUMBER	DESCRIPTION	MODEL NUMBER	DESCRIPTION
TC14-DC-A	Domestic TropiCool TC 14 Powered Cooler	TC35-DC-A	Domestic TropiCool TC 35 Powered Cooler
TC21-DC-A	Domestic TropiCool TC 21 Powered Cooler		

## DOMETIC CFF POWERED COOLERS

MODEL NUMBER	DESCRIPTION	MODEL NUMBER	DESCRIPTION
9600015864	<b>NEW!</b> Domestic CFF 35 Powered Cooler	9600012982	<b>NEW!</b> Domestic CFF 45 Powered Cooler

## DOMETIC POWERED COOLERS ACCESSORIES

MODEL NUMBER	DESCRIPTION	MODEL NUMBER	DESCRIPTION
CFX-IC28	Domestic Insulated Cover for CFX 28	CF-IC18	Domestic Insulated Cover for CF 18
CFX-IC35	Domestic Insulated Cover for CFX 35W	CF-IC25	Domestic Insulated Cover for CF 25
CFX-IC40	Domestic Insulated Cover for CFX 40W	CF-IC35	Domestic Insulated Cover for CF 35
CFX-IC50	Domestic Insulated Cover for CFX 50W	CF-IC40	Domestic Insulated Cover for CF 40
CFX-IC65	Domestic Insulated Cover for CFX 65W	CF-IC50	Domestic Insulated Cover for CF 50
CFX-IC75	Domestic Insulated Cover for CFX 75DZW	CF-IC80	Domestic Insulated Cover for CF 80
CFX-IC95	Domestic Insulated Cover for CFX 95DZW & CFX 100W	CF-IC110	Domestic Insulated Cover for CF 110
CFX-SLD3540	Domestic Fridge Slide for CFX 35W & CFX 40W	CFX-SLD5065	Domestic Fridge Slide for CFX 50W & CFX 65W
CFX-SLD7580100	Domestic Fridge Slide for CFX 75DZW, CF 80 & CF 110	CFX-SLD95100	Domestic Fridge Slide for CFX 95DZW & CFX 100W

# HIGH-PERFORMANCE COOLER

High outside temperatures, uneven terrain, dust and mud... the "indestructible" Patrol coolers take all this in their stride! Patrol coolers are equipped with extremely effective insulation. Depending on use and weather conditions, once the cool packs or ice are placed inside, they will keep groceries, fish, bait and wild game fresh for days! They also come with a 7 year limited warranty.

## KEY BENEFITS

- Thick PU insulation keeps ice frozen for days at a time
- Large, leak-proof drain makes cleaning easy
- Deep-freeze lid seal ensures no gaps for air to enter or escape
- Rugged construction with one-piece rotomolded PE
- One-handed rubber latches for convenient opening and closing of the lid

**NEW!**  
DOMETIC PATROL  
ICE CHESTS



## NEW! DOMETIC PATROL 55

Enjoy longer-lasting ice on your next fishing or camping trip – our Patrol ice chest keeps ice frozen for days!

- 43 Can/54.3l Capacity
- Dimensions: 18.8" H x 29.8" W x 16.4" D
- Thick PU insulation keeps ice frozen for days at a time
- Large, leak-proof drain makes cleaning easy
- Deep-freeze lid seal ensures no gaps for air to enter or escape
- Rugged construction with one-piece rotomolded PE
- One-handed rubber latches for convenient opening and closing of the lid

Ref. nm. PATR55

**NEW! DOMETIC PATROL 35**

Enjoy longer-lasting ice on your next fishing or camping trip – our Patrol ice chest keeps ice frozen for days!

- 28 Can/35.6l Capacity
- Dimensions: 16.3" H x 27.2" W x 15.3" D
- Thick PU insulation keeps ice frozen for days at a time
- Large, leak-proof drain makes cleaning easy
- Deep-freeze lid seal ensures no gaps for air to enter or escape
- Rugged construction with one-piece rotomolded PE
- One-handed rubber latches for convenient opening and closing of the lid

Ref. nm. PATR35

**NEW! DOMETIC PATROL 20**

- 15 Can/18.8l Capacity
- Dimensions: 14.9" H x 20.7" W x 14" D
- Thick PU insulation keeps ice frozen for days at a time
- Large, leak-proof drain makes cleaning easy
- Deep-freeze lid seal ensures no gaps for air to enter or escape
- Rugged construction with one-piece rotomolded PE

Ref. nm. PATR20

**NEW! DOMETIC PATROL 75**

- 58 Can/74.2l Capacity
- Dimensions: 18.8" H x 35" W x 17.6" D
- Thick PU insulation keeps ice frozen for days at a time
- Large, leak-proof drain makes cleaning easy
- Deep-freeze lid seal ensures no gaps for air to enter or escape
- Rugged construction with one-piece rotomolded PE

Ref. nm. PATR75

**NEW! DOMETIC PATROL 105**

- 81 Can/102l Capacity
- Dimensions: 18.8" H x 44.9" W x 18.1" D
- Thick PU insulation keeps ice frozen for days at a time
- Large, leak-proof drain makes cleaning easy
- Deep-freeze lid seal ensures no gaps for air to enter or escape
- Rugged construction with one-piece rotomolded PE

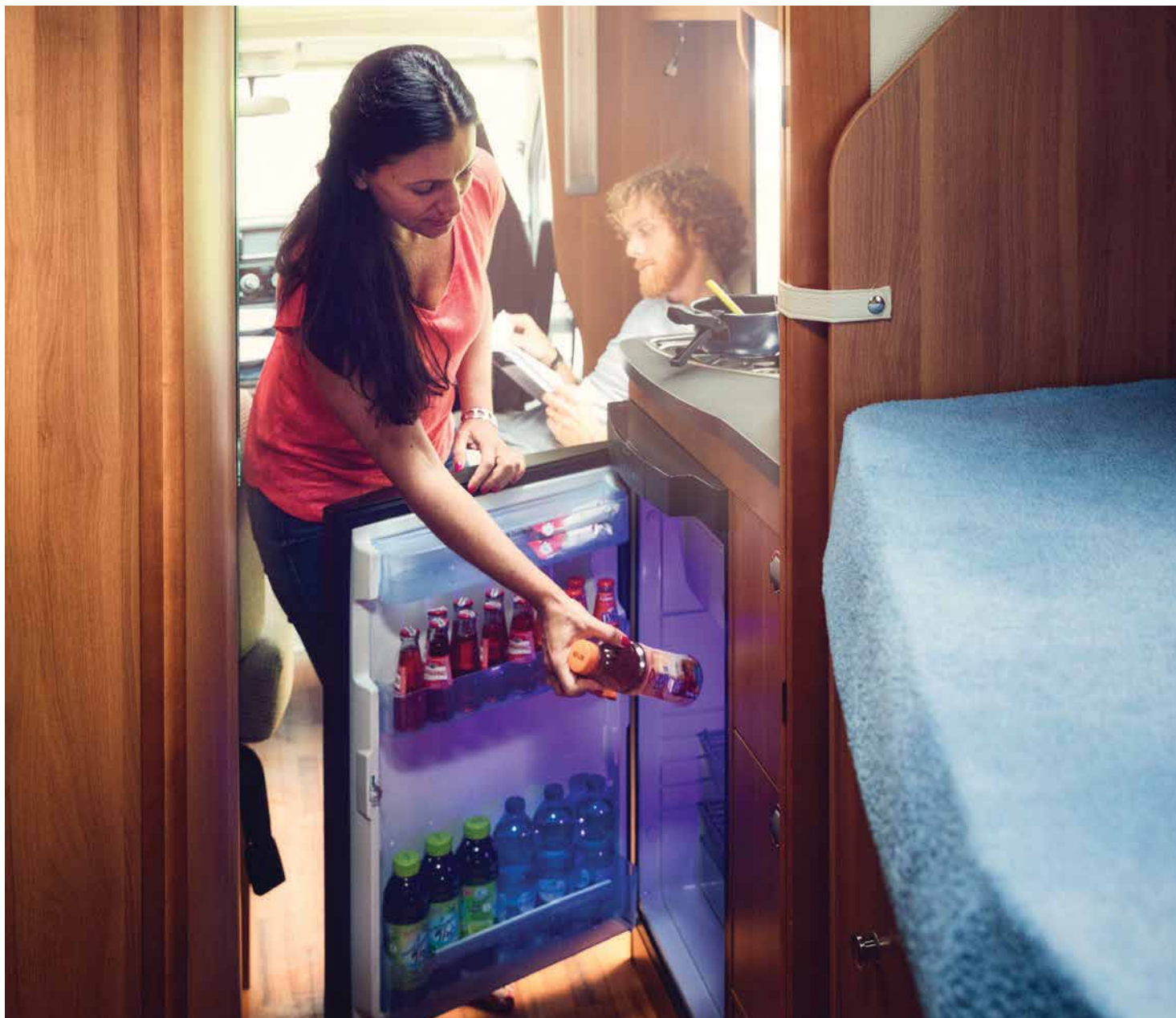
Ref. nm. PATR105



# REFRIG



# GENERATION



# COOL CONVENIENCE

## REFRIGERATORS FOR MOTORHOMES – EQUIPPED LIKE YOUR FRIDGE AT HOME

We started out making mobile refrigeration products, so it's not surprising that more outdoor people use our cooling products than any other brand. Over the years, we have sold many millions of units.

Dometic solutions deliver refrigeration efficiency and features you will not find anywhere else, including automatic locking systems, versatile racking, adjustable shelf guards and more.



## DOMETIC REFRIGERATION OPTIONS

MODEL NUMBER	TYPE				OPERATION		CONTROL TYPE				RECESS DIMENSIONS		
	2+2	LG. DBL. DOOR	SM. DBL. DOOR	SINGLE DOOR	2-WAY	3-WAY	AUTO LP	AUTO/ELEC LP	ELECTRONIC LP	PIEZO LP	HEIGHT	WIDTH	DEPTH

### RENAISSANCE II REFRIGERATORS

DMR702-E		●			●			●			53.75	23.70	24.25
----------	--	---	--	--	---	--	--	---	--	--	-------	-------	-------

### AMERICANA SERIES REFRIGERATORS

DM2652			●		●			●			53.75	23.69	24
DM2662			●		●		●	●			53.75	23.69	24
DM2852		●			●			●			59.94	23.69	24
DM2862		●			●		●	●			59.94	23.69	24
RM2351				●	●			●		●	29.75	20.5	21.38
RM2354				●		●		●		●	29.75	20.5	21.38
RM2451				●	●			●		●	36.56	23.69	24
RM2454				●		●		●		●	36.56	23.69	24
RM2551				●	●			●			42.63	23.69	24
RM2554				●		●	●	●			42.63	23.69	24

### NEW GENERATION REFRIGERATORS

RM3762		●			●		●	●			53.75	23.69	24
RM3962		●			●		●	●			62.98	23.69	24

### 8-SERIES REFRIGERATORS

RM8551			●		●			●	●		32.48	20.74	23.50
RML8555			●		●		●	●			49.17	20.82	23.58

### COMPACT REFRIGERATORS

RM2193				●		●				●	21	17.75	21.5
RM4223				●		●				●	21	19.25	24



## DOMETIC ELITE 2+2

The Elite 2 + 2 Series offers masses of convenience and style, setting a higher standard for RV refrigeration. Unlike other two-door refrigerators, it features a divider-less freezer compartment for wall-to-wall cooling. Have home-style convenience, on the go!

- Premium double-door convenience and space
- Divider-less freezer compartment for wall-to-wall cooling
- Three crisper bins, dual-action shelf guards
- 13.5 cu. ft. capacity
- Patented automatic door lock activated by RV ignition system available in selected models

### PRODUCT SPECIFICATIONS

**OVERALL DIMENSIONS:** 64.25 x 33.69 x 28.06 in

**RECESS DIMENSIONS:** 63.19 x 32.75 x 26.06 in

**SHIPPING WEIGHT:** 242 lbs.



## DOMETIC NEW GENERATION

Thanks to advanced insulation technology, Dometic has expanded the storage space of the New Generation Series Refrigerator, without increasing its outside dimensions. Also featuring adjustable shelves and self-locking handles for convenient and secure storage.

- Self-locking door handles designed for easy operation and security
- Stylish, residential appearance
- Versatile racking system, four interior food shelves are adjustable
- Solid steel front frame adds durability and ensures a tight door seal

### 7 CU FT PRODUCT SPECIFICATIONS

**OVERALL DIMENSIONS:** 54.75 x 26.06 x 05.06 in

**RECESS DIMENSIONS:** 53.75 x 23.69 x 25.00 in

**SHIPPING WEIGHT:** 143 lbs.

### 9 CU FT PRODUCT SPECIFICATIONS

**OVERALL DIMENSIONS:** 63.94 x 25.06 x 26.06 in

**RECESS DIMENSIONS:** 62.95 x 23.69 x 24.00 in

**SHIPPING WEIGHT:** 171 lbs.



## DOMETIC AMERICANA PLUS

Dometic Americana Plus refrigerators offer versatile 6 or 8 cu. ft. interior storage, eye-level electronic controls, and two- or three-way power with automatic LP ignition. Climate control system saves energy, and helps prevent condensation.

- Convenient eye-level automatic or manual electronic controls
- Automatic electronic LP ignition system turns on power quickly
- Low power mode saves energy

### 6 CU FT PRODUCT SPECIFICATIONS

**OVERALL DIMENSIONS:** 54.66 x 24.88 x 26.00 in

**RECESS DIMENSIONS:** 53.75 x 23.69 x 24.00 in

**SHIPPING WEIGHT:** 123 lbs.

### 8 CU FT PRODUCT SPECIFICATIONS

**OVERALL DIMENSIONS:** 60.75 x 24.88 x 24.63 in

**RECESS DIMENSIONS:** 59.92 x 23.90 x 24.02 in

**SHIPPING WEIGHT:** 140 lbs.



## DOMETIC AMERICANA

Dometic Americana Double Door Refrigerators feature two-way power (110 V AC or LP Gas) in 6 and 8 cu. ft. capacities. Solid steel frame construction and improved electronic controls help make this one of the best built RV refrigerators on the road, all at an affordable price.

- Versatile shelf system includes three-position freezer shelf
- Adjustable and removable door bins with 2 l and ½ gal. storage
- Locking door handles keep contents safe

### 6 CU FT PRODUCT SPECIFICATIONS

**OVERALL DIMENSIONS:** 54.66 x 24.88 x 26.00 in

**RECESS DIMENSIONS:** 53.75 x 23.69 x 24.00 in

**SHIPPING WEIGHT:** 123 lbs.

### 8 CU FT PRODUCT SPECIFICATIONS

**OVERALL DIMENSIONS:** 60.75 x 24.88 x 24.63 in

**RECESS DIMENSIONS:** 59.92 x 23.90 x 24.02 in

**SHIPPING WEIGHT:** 140 lbs.



## DOMETIC 8-SERIES REFRIGERATOR

Dometic 8 Series RV refrigerators with automatic energy selector come loaded with features you are bound to love. This particular model comes with a set of double doors for maximum convenience. The detachable freezer compartment is exclusive to Dometic and can be removed quickly to make room for more refrigerated food and reduce energy consumption.

- Large volume of 160 l (including separate 30 l freezer)
- Silent operation – no disturbance from your fridge
- Fingertip door opening and user friendly control panel
- Two-door model
- Flexible shelf system with easy clean surface

### PRODUCT SPECIFICATIONS

**OVERALL DIMENSIONS:** 64.25 x 33.69 x 28.06 in

**RECESS DIMENSIONS:** 49.03 x 20.32 x 24.47 in

**SHIPPING WEIGHT:** 100 lbs.

**CUBIC FEET:** 6.67 without freezer 6.32 with freezer



## DOMETIC 8-SERIES REFRIGERATOR

This 8 Series fridge with its patented removable freezer, caters for all your cooling needs while you're on the move. And, when it comes to moving, it's three-way power options – AC, DC and Gas – give you the freedom to travel anywhere! Plus it's completely silent, meaning you won't be disturbed by the superb cooling performance.

- The 9 l freezer has a patented design for easy removal
- Silent operation – no interruption from your fridge
- Fingertip door opening and user friendly control panel
- Flexible shelf system

### PRODUCT SPECIFICATIONS

**RECESS DIMENSIONS:** 32.48 x 20.74 x 23.50 in

**SHIPPING WEIGHT:** 67 lbs.



## DOMETIC RENAISSANCE II REFRIGERATOR

The Dometic Renaissance Refrigerator provides RVer's the comfort of home through the sleek, modern look and feel that it gives the kitchen.

- Clean and modern residential style
- Designed and engineered to minimize frost - no need for frost limiters
- Reversible hinges makes door modifications quick & easy
- 3 preset temperature settings for optimizing cooling
- Dometic's new LED "white" light illuminates the fresh food compartment 30% brighter
- Plastic rail secures and stabilizes content in the door racks
- Full surround steel frame for a superior seal - resulting in better cooling performance

### PRODUCT SPECIFICATIONS

**OVERALL DIMENSIONS:** 54.75 x 27.30 x 25.07 in

**RECESS DIMENSIONS:** 53.74 x 23.70 x 24.25 in

**SHIPPING WEIGHT:** 136.71 lbs.



## DOMETIC AMERICANA SINGLE DOOR SERIES

The Dometic Americana Single Door Series refrigerator is a contemporary model with a two- or three-way power option, offering users the freedom to travel anywhere!

- Easy to use top-mounted controls
- Adjustable, removable door bins
- Top manual controls with Piezo LP ignition make operation simple and easy

### 3 CU FT PRODUCT SPECIFICATIONS

**OVERALL DIMENSIONS:** 30.38 x 21.88 x 22.06 in

**RECESS DIMENSIONS:** 29.75 x 20.50 x 21.38 in

**SHIPPING WEIGHT:** 71 lbs.

### 4 CU FT PRODUCT SPECIFICATIONS

**OVERALL DIMENSIONS:** 37.38 x 24.69 x 24.88 in

**RECESS DIMENSIONS:** 36.56 x 23.69 x 24.00 in

**SHIPPING WEIGHT:** 78 lbs.

### 5 CU FT PRODUCT SPECIFICATIONS

**OVERALL DIMENSIONS:** 43.50 x 24.69 x 24.88 in

**RECESS DIMENSIONS:** 42.63 x 23.69 x 24.00 in

**SHIPPING WEIGHT:** 78 lbs.



**DOMETIC RM2193  
COMPACT REFRIGERATOR**

- 1.9 cu. ft. capacity
- Three-way power – AC, DC and LP Gas – for the freedom to travel anywhere
- Compact size makes it the ideal replacement for an icebox
- Black frame

**PRODUCT SPECIFICATIONS**

**OVERALL DIMENSIONS:** 21.00 x 17.75 x 21.50 in  
**WEIGHT:** 46.30 lbs.



**DOMETIC RM4223  
COMPACT REFRIGERATOR**

- Completely silent absorption technology
- 2.5 cu. ft. of storage
- Three-way power – AC, DC and LP Gas – give you the freedom to travel anywhere
- Black frame

**PRODUCT SPECIFICATIONS**

**OVERALL DIMENSIONS:** 21.00 x 19.25 x 24.00 in  
**WEIGHT:** 50.72 lbs.



**DOMETIC MF6W WINE CHILLER**

- Easy to use electronic thermostat with digital temperature display
- Transparent door with safe magnetic lock
- Three removable grid shelves with interior light for convenient storage
- Continuously variable temperature
- Drip tray for condensate water
- Wear-free thermoelectric with interior and exterior fan
- Storing capacity: 6 bottles lying (bottle length up to 12.6 in.)

**DOMETIC REFRIGERATOR DOOR PANELS**

MODEL NUMBER	DESCRIPTION	MODEL NUMBER	DESCRIPTION
3106863.008C	Black Acrylic, Main Panel RM2410.2R	3106863.164C	Black Acrylic, Both Panels RM3962
3106863.016C	Black Acrylic, Main Panel RM2510.2R	3106863.198C	Black Acrylic, RML8555
3106863.024C	Black Acrylic, Both Panels RM2620R	3106863.180C	Black Acrylic, Door Panel, Black, RM1350/RME1350
3106863.057C	Black Acrylic, Main Panel RM2451/2454	3314289.030A	Raised Panels, Aluminum, For RM3762
3106863.065C	Black Acrylic, Main Panel RM2551/2554	3314289.030C	Raised Panels, Black, For RM3762
3106863.073C	Black Acrylic, Both Panels DM2652	3314289.030D	Raised Panels, Bronze, For RM3762
3106863.081C	Black Acrylic, Both Panels DM2852/2862	3314289.020A	Raised Panels, Aluminum, For RM3962
3106863.099C	Black Acrylic, Main Panel RM2193	3314289.020C	Raised Panels, Black, For RM3962
3106863.156C	Black Acrylic, Both Panels RM3762	3314289.020D	Raised Panels, Bronze, For RM3962

## DOMETIC REFRIGERATORS

MODEL NUMBER	DESCRIPTION	MODEL NUMBER	DESCRIPTION
RM1350IMSS	Dometic Elite 2+2 Refrigerator, Stainless Steel	RML8555L	Dometic 8-Series Refrigerator, 6.7 cu. ft., Large Single Door, Left Hinge, Black Frame
RM1350IMBS	Dometic Elite 2+2 Refrigerator, Black Steel	RML8555R	Dometic 8-Series Refrigerator, 6.7 cu. ft., Large Single Door, Right Hinge, Black Frame
RM1350IM	Dometic Elite 2+2 Refrigerator, Accepts Panels	RM8501RFBP	Dometic 8-Series Refrigerator, 3.7 cu. ft., Small Single Door, Right Hinge, Black Decor Panel Insert
RM3962RSS	Dometic New Generation Refrigerator, 9 cu. ft., Stainless Steel, Double Door, Right Swing	RM8501LFBP	Dometic 8-Series Refrigerator, 3.7 cu. ft., Small Single Door, Left Hinge, Black Decor Panel Insert
RM3962LSS	Dometic New Generation Refrigerator, 9 cu. ft., Stainless Steel, Double Door, Left Swing	DMR702RB-E	Dometic Renaissance II Refrigerator, 7 cu. ft., Right Swing
RM3962RB	Dometic New Generation Refrigerator, 9 cu. ft., Black, Double Door, Right Swing	DMR702LB-E	Dometic Renaissance II Refrigerator, 7 cu. ft., Left Swing
RM3962LB	Dometic New Generation Refrigerator, 9 cu. ft., Black, Double Door, Left Swing	RM2554RB1F	Dometic Americana 3-Series Refrigerator, 5 cu. ft., 3-Way, Black Frame
RM3962RBIMF	Dometic New Generation Refrigerator, 9 cu. ft., Black, Double Door, Right Swing, Ice Maker, Fan	RM2551RB1F	Dometic Americana 3-Series Refrigerator, 5 cu. ft., 2-Way, Black Frame
RM3762RSS	Dometic New Generation Refrigerator, 7 cu. ft., Stainless Steel, Double Door, Right Swing	RM2454RB1F	Dometic Americana 3-Series Refrigerator, 4 cu. ft., 3-Way, Black Frame
RM3762LSS	Dometic New Generation Refrigerator, 7 cu. ft., Stainless Steel, Double Door, Left Swing	RM2451RB1F	Dometic Americana 3-Series Refrigerator, 4 cu. ft., 2-Way, Black Frame
RM3762RB	Dometic New Generation Refrigerator, 7 cu. ft., Black, Double Door, Right Swing	RM2354RB1F	Dometic Americana 3-Series Refrigerator, 3 cu. ft., 3-Way, Black Frame
RM3762LB	Dometic New Generation Refrigerator, 7 cu. ft., Black, Double Door, Left Swing	RM2351RB1F	Dometic Americana 3-Series Refrigerator, 3 cu. ft., 2-Way, Black Frame
DM2862RB	Dometic Americana Plus Refrigerator, 8 cu. ft., 2-Way, Black Frame	RM2193RB	Dometic RM2193 Compact Refrigerator, 1.9 cu. ft., Right Swing, Black
DM2862RBIMHF	Dometic Americana Plus Refrigerator, 8 cu. ft., 2-Way, Black Frame, Ice Maker with Heat Option	RM2193LB	Dometic RM2193 Compact Refrigerator, 1.9 cu. ft., Left Swing, Black
DM2662RB	Dometic Americana Plus Refrigerator, 6 cu. ft., 2-Way, Black Frame	RM4223RB	Dometic RM4223 Compact Refrigerator, 2.5 cu. ft., Right Swing, Black
DM2662RBIMH	Dometic Americana Plus Refrigerator, 6 cu. ft., 2-Way, Black Frame, Ice Maker with Heat Option	RM4223LB	Dometic RM4223 Compact Refrigerator, 2.5 cu. ft., Left Swing, Black
DM2652RB	Dometic Americana Refrigerator, 6 cu. ft., 2-Way, Black Frame	MF6W-DC	Dometic MF6W Wine Chiller, Six Bottle Capacity
DM2852RB	Dometic Americana Refrigerator, 8 cu. ft., 2-Way, Black Frame		

## DOMETIC REFRIGERATOR ACCESSORIES

MODEL NUMBER	DESCRIPTION	MODEL NUMBER	DESCRIPTION
293275011	Americana Door Reversing Kit, Right Swing to Left Swing, Black	3311236.000	Dometic Refrigerator Roof Vent Kit, Polar White
958046410	LS300 Vent, 7.00 x 20.00 in	3311236.024	Dometic Refrigerator Roof Vent Kit, Black
3316941.010	Lower Sidewall Vent, Plastic, Polar White	3312697.007	Base Only, Polar White
3108705.744	Dometic Power Ventilator Kit, Double Door with Switch	3312694.023	Base Only, Black
3108705.751	Dometic Power Ventilator Kit, Single Door with Switch	3312695.004	Cap Only, Polar White
3104133.016	Limit Switch, Double Door with Switch	3312695.020	Cap Only, Black
3313470.095	Limit Switch, Single Door with Switch		

**UPGRADING TO A DOMETIC REFRIGERATOR** (Measurements shown in inches)

**UPGRADING FROM A NORCOLD REFRIGERATOR TO A DOMETIC REFRIGERATOR**

MODELS	HEIGHT	WIDTH	DEPTH	DOMETIC MODELS	HEIGHT	WIDTH	DEPTH
RM24.00	22.38	19.38	19.88	RM2193	21.00	17.75	21.50
RM190	21.50	18.75	19.50	RM2193	21.00	17.75	21.50
RM211	22.69	19.63	17.63	RM2193	21.00	17.75	21.50
RM2150	17.50	17.75	21.50	RM2193	21.00	17.75	21.50
RM2190	21.50	17.75	20.50	RM2193	21.00	17.75	21.50
RM2191, 2193	21.88	17.75	20.88	RM2193	21.00	17.75	21.50
RM2200, 2201, 2202	22.25	19.50	18.25	RM2193	21.00	17.75	21.50
RM4290, 4292	29.63	20.63	20.00	RM2351, RM2354	29.75	20.63	20.00
RM36	28.75	20.50	20.63	RM2351, RM2354	29.75	20.50	21.38
RM360, 361, 2300, 2301, 2310, 2332, 2333	29.75	20.50	21.38	RM2351, RM2354	29.75	20.50	21.38
RM45, 46, 47	31.25	21.88	23.63	RM2351, RM2354	29.75 32.44	20.50 21.81	21.38 24.00
RM460, 461, 24.0000, 24.0001, 24.0010	32.44	21.88	24.00	RM24.0051, RM24.0054	39.56	23.69	24.00
RM760, 761, 763, 2600, 2601, 2610	51.38	21.88	24.00	RM3762, DM2652, DM2662	53.75	23.69	24.00
RM2602, 2603, 2604, 2607, 2611, 2612, RM2620, 3600, 3601, 3604, 3607	49.56	21.88	24.00	RM3762, DM2652, DM2662	53.75	23.69	24.00
RM75, 76, 77	56.88	23.81	23.38	RM3962*, DM2852, DM2862	59.94	23.69	24.00
RM100, 2802, 2803, 2804, 2807, 2811, 2812, RM 2820, 3800, 3801, 3804, 3807	55.44	23.69	24.00	DM2852, DM2862	59.94	23.69	24.00
RM2800	57.50	23.81	23.75	RM3962*, DM2852, DM2862	59.94	23.69	24.00
RM2801	57.94	24.94	24.00	RM3962*, DM2852, DM2862	59.94	23.69	24.00
RM2810				RM3962*, DM2852, DM2862	59.94	23.69	24.00
RM4801	62.81	23.81	24.00	RM3962*, DM2852, DM2862	59.94	23.69	24.00
RM4804	63.00	23.81	24.00	RM3962*, DM2852, DM2862	59.94	23.69	24.00
RM7030, 7130	57.13	32.75	24.00	RM1350	63.19	32.75	24.00
S520, 530, 1521, 1531, S519	43.25	23.50	24.00	RM2551, 2554	42.63	23.69	24.00
S620, 630, 1621, S1631, S619	52.63	23.50	24.00	RM3762, DM2662	53.75	23.69	24.00
S820, 830, 1821, 1831, S819	59.63	23.50	24.00	RM3962*, DM2652, DM2662	59.94	23.69	24.00
RM24.0052, 24.0053	39.56	23.69	24.00	RM24.0051, 24.0054	39.56	23.69	24.00
RM2552, 2553	42.63	23.69	24.00	RM2551, 2554	42.63	23.69	24.00
DM3662, 3663	53.75	23.69	24.00	RM3762, DM2662	53.75	23.69	24.00
RM3862, 3863	59.94	23.69	24.00	DM2862, RM3962*	59.94	23.69	24.00
RM4872, 4873	59.94	23.69	24.00	DM2852**, DM2862**, RM3962*	59.94	23.69	24.00
RM7732, 7832	59.06	32.69	24.00	RM1350	63.19	32.75	26.06
RM1272, 1282, NDR1272, 1282	59.06	36.50	24.00	RM1350	63.19	32.75	26.06
NDR1492	59.06	36.50	24.00	RM1350	63.17	32.00	26.06
NDA1402	63.19	32.75	26.06	RM1350 (add 5")	63.19	32.75	26.06
NDM1062	59.94	23.69	24.00	DM2862 RM3962	59.94 62.95	23.69 23.69	24.00 24.00
NDR1292	59.06	32.69	24.00	RM1350	63.19	32.75	26.06
RM2820	55.38	23.63	24.00	DM2662, RM3762 (with 3313470.072 Retro fit kit)	53.75	23.69	24.00

\* RM3962 approximately 3" higher than DM models.

\*\*DM2652 = RM2652, DM2662 = RM2662, DM2663 = RM2662, DM2852 = RM2852, DM2862 = RM2862, DM3662 = RM3662, DM3663 = DISCONTINUED, DM3862 = RM3862, DM3863 = DISCONTINUED, NDR1062 = NDM1062



## UPGRADING TO A DOMETIC REFRIGERATOR (Measurements shown in inches)

### UPGRADING FROM A NORCOLD REFRIGERATOR TO A DOMETIC REFRIGERATOR

MODELS	HEIGHT	WIDTH	DEPTH	DOMETIC MODELS	HEIGHT	WIDTH	DEPTH
322, 333	20.63	17.50	21.25	RM2193	21.00	17.75	21.50
442, 443	30.88	23.25	24.00	RM2351, RM2354	29.75	20.50	21.38
452, 453, 652, 653	42.25	23.63	24.00	RM2551, RM2554	42.63	23.69	24.00
N510, 512	43.25	23.50	24.00	RM2551, RM2554	42.63	23.69	24.00
838	51.88	23.94	23.25	DM2652**, DM2662**, RM3762	53.75	23.69	24.00
462, 463, 662, 663, 641	52.88	23.50	24.00	DM2652**, DM2662**, RM3762	53.75	23.69	24.00
876	52.13	24.00	24.00	DM2652**, DM2662**, RM3762	53.75	23.69	24.00
8662	52.50	23.63	24.00	DM2652**, DM2662**, RM3762	53.75	23.69	24.00
8310	58.88	23.94	23.50	DM2852**, DM2862**, RM3962	59.94	23.69	24.00
878	59.00	24.00	24.00	DM2852**, DM2862**, RM3962	59.94	23.69	24.00
482, 483, 682, 683, 841	59.88	23.94	24.00	DM2852**, DM2862**, RM3962	59.94	23.69	24.00
8010	59.00	23.88	24.00	DM2852**, DM2862**, RM3962	59.94	23.69	24.00
8682	59.50	23.63	24.00	DM2852**, DM2862**, RM3962	59.94	23.69	24.00
N260/N260.3	21.00	19.38	24.00	RM2193	21.00	17.75	21.50
N300/N300.3	29.75	20.50	21.38	RM2351 RM2354	29.75 42.63	20.50 23.69	21.38 24.00
N510/510.3	42.63	23.69	24.00	RM2551 RM2554	42.63 42.63	23.69 23.69	24.00 24.00
N641/N641.3	52.88	29.50	24.00	DM2652, DM2662, RM3762	53.75	23.69	24.00
N841/N871.3	59.88	29.50	24.00	DM2852**, RM3962 DM2862**	55.38 59.94	23.63 23.69	24.00 24.00
N1210	63.25	32.69	24.00	RM1350	63.19	32.75	26.06

### UPGRADING FROM AN INSTAMATIC REFRIGERATOR TO A DOMETIC REFRIGERATOR

MODELS	HEIGHT	WIDTH	DEPTH	DOMETIC MODELS	HEIGHT	WIDTH	DEPTH
RV-2-201	21.75	19.19	18.19	RM2193	21.00	17.75	21.50
IM-2	22.25	18.13	16.63	RM2193	21.00	17.75	21.50
RV-3-301	28.75	20.69	19.44	RM2351, RM2354	29.75	20.50	21.38
IM-3	28.75	20.25	18.63	RM2351, RM2354	29.75	20.50	21.38
RV-4-401	33.94	20.69	21.63	RM2451, RM2454	36.56	23.69	24.00
IM-431	21.63	22.63		RM2451, RM2454	36.56	23.69	24.00
RV-7-701	53.63	23.88	23.25	DM2652**, DM2662**, RM3762	53.75	23.69	24.00
IM-270	51.75	23.75	23.25	DM2652**, DM2662**, RM3762	53.75	23.69	24.00
IM-70	52.00	24.00	23.00	DM2652**, DM2662**, RM3762	53.75	23.69	24.00
RV-8-801	59.31	23.88	23.75	DM2852**, DM2862**, DM3962	59.94	23.69	24.00

### UPGRADING FROM A SIBIR REFRIGERATOR TO A DOMETIC REFRIGERATOR

MODELS	HEIGHT	WIDTH	DEPTH	DOMETIC MODELS	HEIGHT	WIDTH	DEPTH
RV-104	30.31	23.50	23.00	RM2351, RM2354	29.75	20.50	21.38
RV-106	34.38	23.50	23.00	RM2451, DM2454	36.56	23.69	24.00
RV-240	34.13	23.50	23.00	RM2451, DM2454	36.56	23.69	24.00
RV-108	54.38	23.50	23.00	DM2652**, DM2662**, RM3762	53.75	23.69	24.00
RV-270	54.06	23.50	23.00	DM2652**, DM2662**, RM3762	53.75	23.69	24.00
RV-110	65.38	23.50	23.00	DM2852**, DM2862**, RM3962	59.94	23.69	24.00
RV-280	59.00	23.50	23.00	DM2852**, DM2862**, RM3962	59.94	23.69	24.00

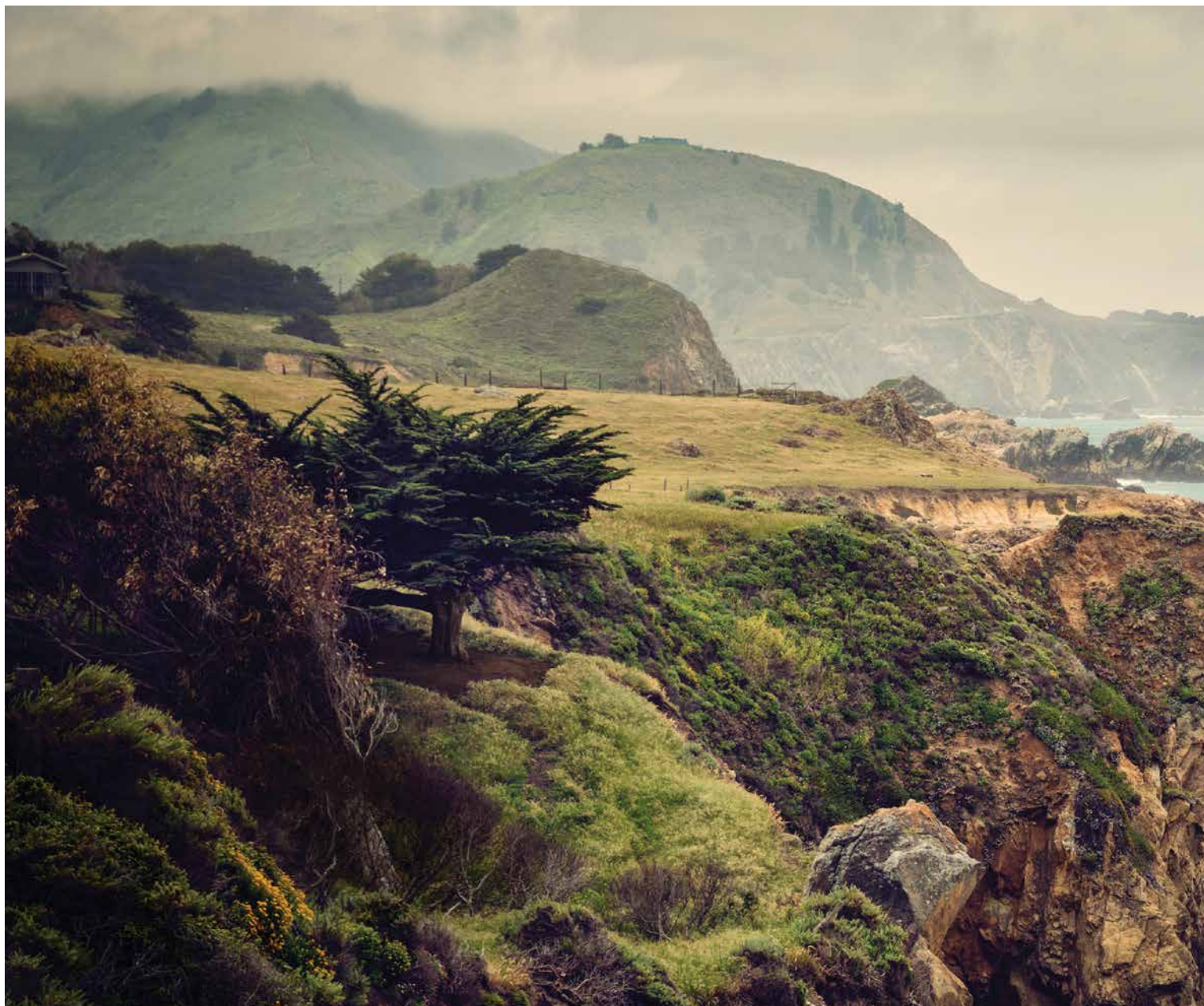
**/ SANITATION**  
**/ CLEANING**  
**/ WATER HEATERS**

# HYGI SANIT



# ENE & ATION





# HYGIENE & SANITATION

## TRAVEL IN COMPLETE COMFORT AND CONVENIENCE

We want you to travel in complete comfort and convenience. This is the idea behind our Hygiene & Sanitation range. It provides you with well engineered sanitation solutions and practical, easy-to-use hygiene accessories for undiminished recreation. Choose the toilet concept to suit your idea of comfort and the layout of your bathroom.

Reap the benefits of decades of research and development: tailor-made comfort and convenience, and the pleasant feeling of freshness, free from nasty odors. Enjoy your vacation – in every corner of your RV.



## SANITATION

Pick the toilet to suit your bathroom and your idea of comfort. Luxurious partial china toilets with scratch-resistant, easy to clean ceramic. Space-saving portable toilets with 360° pressurized flush.

## CLEANING

Perfect hygiene for your smallest room. Practical drop-in treatments cleaners for the waste holding tank. Innovative additives for a sparkling-clean toilet bowl. Special, rapid-dissolving toilet paper for the comforts of home.

## WATER HEATERS

Reliability and efficiency make it easier than ever to travel with the comforts of home. A simple flip of the switch from inside the coach turns this water heater on or off. Relax while showering - stay longer.

# SANIT





# ATION

CLIMATE

FOOD & BEVERAGE

**HYGIENE & SANITATION**

SAFETY & SECURITY

POWER & CONTROL



# NOT YOUR ORDINARY FAMILY

**HOME IS THEIR RV – NAMED MALI MISH, WHICH IS CROATIAN FOR  
“LITTLE MOUSE” – AND WHEREVER THEY HAPPEN TO FIND THEMSELVES.**

The story of Mali Mish began in 2007. Dan and Marlene had just had their first child, a baby girl called Ava, and decided to do what most rookie parents would never dream of. They hit the road, baby in tow, with no intention of parking for the long haul. They made their way across America’s southwest in a little camper. Two years later, following the birth of their second daughter, Mila, they went all in and purchased an Airstream, traveling across the US from California to Florida.

“We have everything you need here, a roof over our heads, a bed to sleep in. And feeding a family of five in a confined space is not a challenge. Our Dometic oven and range cooktop does a terrific job of keeping us well fed. And we have a two-way fridge/freezer (also from Dometic) to ensure food and drink stay fresh and chilled. Some folks, who perhaps don’t know much about mobile living, mistakenly believe it’s a really primitive lifestyle. It isn’t,” says Marlene with a smile. “We have a toilet just like everyone else.” Theirs just happens to come from Dometic.





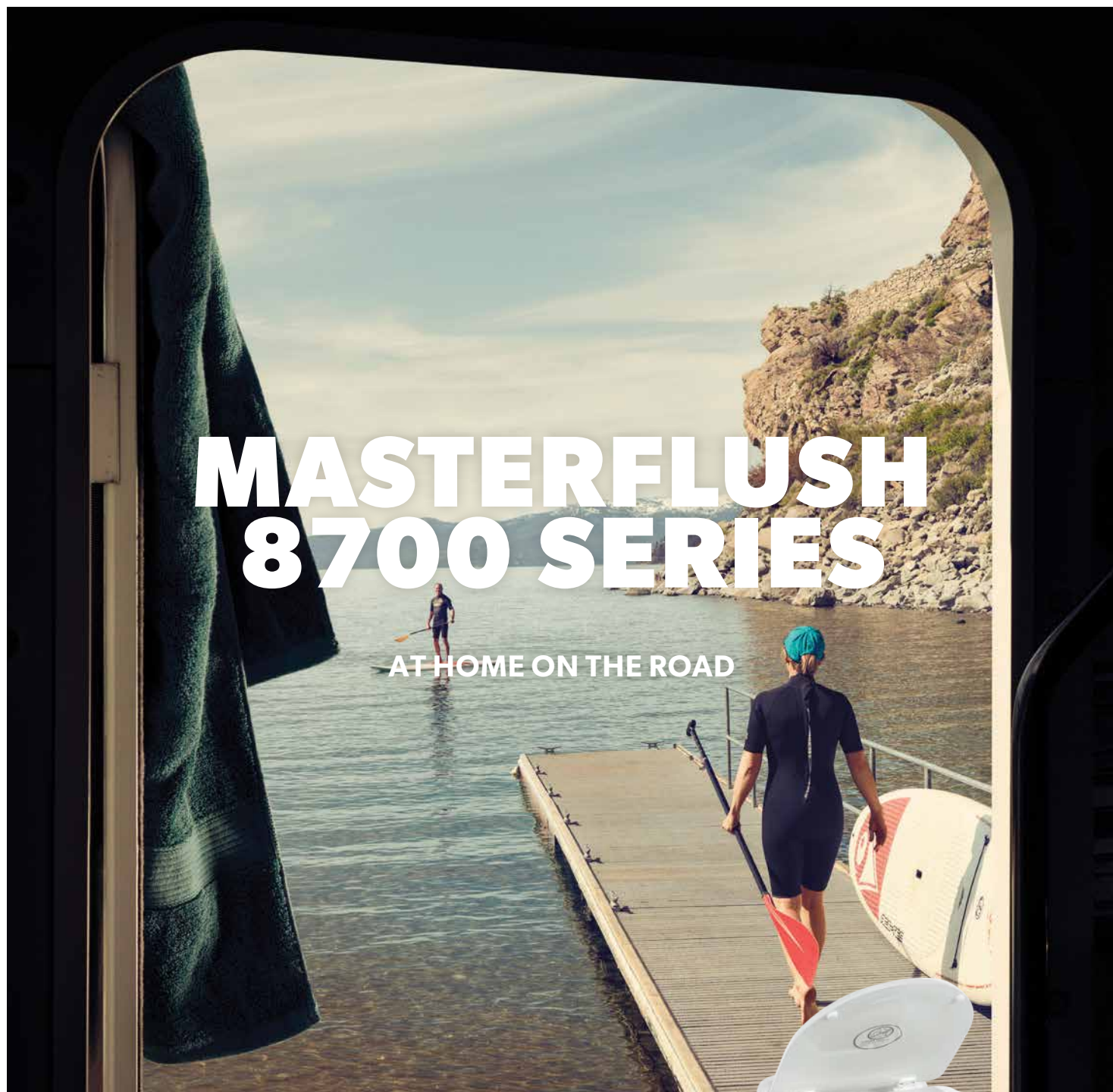
## SANITATION

Leaving the comforts of home behind doesn't mean you have to be uncomfortable. Our broad selection of toilets – including portable, gravity and macerator – are specially designed for all mobile living bathroom spaces, from confined to refined.

## CLEANING

Handy and space-saving: 970 series portable toilets adds hygienic comfort to your recreational vehicle. Smart functions contained in the smallest possible space for homelike comfort on the move.





# MASTERFLUSH 8700 SERIES

AT HOME ON THE ROAD

Dometic MF 8700 toilets offer a statuesque, household-style fixture that fits the demanding needs of luxury vehicles or vessels. The standard-height toilet with elongated seat and residential-size bowl combines premium comfort with powerful flushing at the touch of a button.



# STANDARD-HEIGHT ALL-CERAMIC MACERATOR TOILET IN A FULL-SIZE FIXTURE

For the look and user-friendly performance of an upscale residential toilet with the advantage of low-flush technology, Dometic MasterFlush 8740 macerator toilets, powered with MasterFlush technology, deliver it all. Discriminating owners will appreciate the full-scale residential styling, complete with elongated enameled seat and lustrous, sparkling ceramic finish. The robust effluent macerator operates 30 % more efficiently than previous Dometic macerator toilets. Two flush options promote efficient water consumption.



## DOMETIC MASTERFLUSH 8743

- Standard Dometic flush touchpad or Vimar, Gewiss compatible switch panel
- Quieter, shorter flush duration than other macerator toilets
- Two flush options: Normal or Low allow efficient water consumption
- Standard-height toilet with residential-size bowl and elongated seat for premium comfort
- Through-the-floor or through-the-wall discharge fittings
- Available in white or bone colors



## DOMETIC MASTERFLUSH 8740

- Electronic flush handle with chrome finish
- Quieter, shorter flush duration than other macerator toilets
- Two flush options: Normal or Low allow efficient water consumption
- Standard-height toilet with residential-size bowl and elongated seat for premium comfort
- Through-the-floor or through-the-wall discharge fittings
- Available in white or bone colors

## SLEEK AND POWERFUL

With its European styling and 100 percent vitreous china construction, the Dometic 4410 Premium All-Ceramic Toilet is perfect for motorhomes, bus conversions, and mobile public restrooms. From the leader in toilet sanitation, these RV toilets offer soft lines and gracious curves along with abundant features. With a powerful bowl-clearing gravity flush triggered by the electronic handle or wall-mounted switch it's both simple and convenient to use. The elongated residential-style seat provides all important comfort.



### DOMETIC 4410 TOILET

- Eco-friendly, low-water consumption at 0.33 gal. per flush
- Wall-mounted electronic flush switch
- Elongated residential-style seat for the comfort of home
- White or bone colors
- Optional hand sprayer
- Gravity flush system



### DOMETIC 4310 TOILET

- Eco-friendly, low-water consumption
- Electronic flush handle in chrome finish
- Elongated residential-style seat for the comfort of home
- White or bone colors
- Optional hand sprayer
- Gravity flush system

# HOME-LIKE COMFORT & STYLE

Enjoy all the best features of a household toilet in your RV with a Dometic 320 Elongated Ceramic Toilet. The elongated, deep ceramic bowl and enameled wood seat offer comfort that far surpasses most smaller RV toilets. The pressurized full-rim flush delivers a bowl-clearing rinse every time. The ergonomic one-direction foot pedal action results in easy, hands-free flushing for added sanitary benefits. The sparkling vitreous ceramic bowl keeps its original beauty for years. 320 series RV toilets are available in White or bone colors, in standard or low-profile heights, and with or without a separately mounted hand sprayer.



## DOMETIC 320 SERIES

Enjoy all the best features of a household toilet in your RV with a Dometic 320 series RV toilet. The elongated, deep ceramic bowl and enameled wood seat offer comfort that far surpasses most smaller RV toilets. The pressurized full-rim flush delivers a bowl-clearing rinse every time.

- Deep, 100 % vitreous ceramic bowl
- Full-size residential-style wood seat
- Efficient with water at only one pint per flush
- Rim design prevents spills
- Ergonomic foot pedal: press partially to add water, press fully to flush
- Gravity flush system
- Available in white or bone colors

## STAY IN CONTROL

We understand that not everything about mobile living is always glamorous, but that doesn't stop us from making world-class products to match your needs. The Dometic 310 toilet has a true full rim flush ensuring hygiene and preventing odors from entering the RV. The flush begins from the top of the bowl and efficiently removes the contents with ease. The ceramic bowl mirrors that of the residential toilet in regards to depth and maximum comfortability. The 310 toilet comes with a built in foot pedal for flushing. Have complete control over the amount of water used to flush by varying the distance and duration the foot pedal is pressed. Conserve water and stay in control.



### DOMETIC 310 SERIES

The Dometic 310 RV toilet series offers the best of all worlds. A value-priced toilet, the 310 model features revolutionary PowerFlush technology and a full-size ceramic bowl to deliver the comfort and beauty of a residential toilet.

- Best-in-class gravity flush
- Powerful swirl-jet cleaning action
- Slow-close enameled wood seat improves comfort
- Water efficient flush uses just one pint per flush
- Ergonomic, pressure-sensitive foot pedal: press partially to add water, press fully to flush
- Gravity flush system
- Available in white or bone colors

# JUST LIKE HOME

With its full-size seat and residential style height, the lightweight Dometic 300 toilet is the perfect choice for campers and other smaller pleasure vehicles. Ensuring an essential home comfort on any trip away, the toilet features a powerful triple jet action flush to thoroughly remove waste from the toilet bowl. This is a bowl-clearing flushing action that many other RV toilets simply can't match. Operated by an easy to use and efficient foot pedal with adjustable water level. The watertight flush ball system maintains water in the bowl at all times, meaning any unpleasant odors are kept firmly in the waste holding tank.



## DOMETIC 300 SERIES

Dometic 300 series gravity-flush RV toilets have a powerful triple-jet action flush that removes waste completely. These residential-style Dometic toilets also feature an efficient foot pedal operation with adjustable water level.

- Full-size residential-style seat
- Triple-jet bowl rinse
- Very lightweight
- Water efficient flush uses just one pint per flush
- Gravity flush
- Available in white or bone colors



### DOMETIC 970 SERIES PORTABLE TOILETS

Powerful flushing at the touch of a button without constant pumping or batteries – it's what sets the 970 series apart from other portable toilets.

- High-strength ABS construction withstands harsh environments; smooth, easy-to-clean finish
- Prismatic tank level indicator allows easy tank level monitoring
- Push-button flush clears bowl instantly



### DOMETIC 960 SERIES PORTABLE TOILETS

Dometic's original 960 series of portable toilets provides recreational boaters with a simple, self-contained toilet system. The reliable bellows-operated flush rinses the bowl clean every time.

- High-density polyethylene construction withstands demanding conditions
- Easy-to-clean, scratch-resistant finish
- Secure-locking side latches
- Available with 2.5 or 5.0 gal. waste tank

### DOMETIC 970 SERIES PORTABLE TOILETS

MODEL NUMBER	DESCRIPTION	MODEL NUMBER	DESCRIPTION
301097202	970 2.6 Gallon Portable Toilet, Tan	301097602	970 5.0 Gallon Portable Toilet, Tan
301097206	970 2.6 Gallon Portable Toilet, Gray	301097606	970 5.0 Gallon Portable Toilet, Gray
301097402	970 2.6 Gallon Portable Toilet with Stainless Steel Hold-down Brackets, Tan	301097502	970 5.0 Gallon Portable Toilet with Stainless Steel Hold-down Brackets, Tan
301097406	970 2.6 Gallon Portable Toilet with Stainless Steel Hold-down Brackets, Gray	301097506	970 5.0 Gallon Portable Toilet with Stainless Steel Hold-down Brackets, Gray

### DOMETIC 960 SERIES PORTABLE TOILETS

MODEL NUMBER	DESCRIPTION	MODEL NUMBER	DESCRIPTION
301096202	960 2.5 Gallon Portable Toilet, Parchment	301096602	960 5.0 Gallon Portable Toilet, Parchment
301096206	960 2.5 Gallon Portable Toilet, Platinum	301096606	960 5.0 Gallon Portable Toilet, Platinum
311096402	960 2.5 Gallon Portable Toilet with Stainless Steel Hold-down Brackets, Parchment	311096502	960 5.0 Gallon Portable Toilet with Stainless Steel Hold-down Brackets, Parchment
311096406	960 2.5 Gallon Portable Toilet with Stainless Steel Hold-down Brackets, Platinum	311096506	960 5.0 Gallon Portable Toilet with Stainless Steel Hold-down Brackets, Platinum



## DOMETIC 8700 SERIES TOILETS

MODEL NUMBER	DESCRIPTION	MODEL NUMBER	DESCRIPTION
304874301	8743 Macerator Toilet, 12V DC, Wall Switch Flush, White	304874002	8740 Macerator Toilet, 12V DC, Chrome Flush Lever, White
304874303	8743 Macerator Toilet, 12V DC, Wall Switch Flush, Bone	304874003	8740 Macerator Toilet, 12V DC, Chrome Flush Lever, Bone
304874302	8743 Macerator Toilet, 24V DC, Wall Switch Flush, White	304874009	8740 Macerator Toilet, 24V DC, Chrome Flush Lever, White
304874304	8743 Macerator Toilet, 24V DC, Wall Switch Flush, Bone	304874010	8740 Macerator Toilet, 24V DC, Chrome Flush Lever, Bone

## DOMETIC 4300 & 4400 SERIES TOILETS

MODEL NUMBER	DESCRIPTION	MODEL NUMBER	DESCRIPTION
302441110	4410 Toilet, Wall Switch Flush, White	302431111	4310 Toilet, Chrome Flush Lever, White
302441130	4410 Toilet, Wall Switch Flush, Bone	302431131	4310 Toilet, Chrome Flush Lever, Bone
302441210	4410 Toilet, Wall Switch Flush with Hand Spray, White	302431211	4310 Toilet, Chrome Flush Lever with Hand Spray, White
302441230	4410 Toilet, Wall Switch Flush with Hand Spray, Bone	302431231	4310 Toilet, Chrome Flush Lever with Hand Spray, Bone

## DOMETIC 320 SERIES TOILETS

MODEL NUMBER	DESCRIPTION	MODEL NUMBER	DESCRIPTION
302320081	320 Standard Height - 18" H Toilet, White	302321681	320 Low Profile - 14" H Toilet, White
302320083	320 Standard Height - 18" H Toilet, Bone	302321683	320 Low Profile - 14" H Toilet, Bone
302320181	320 Standard Height - 18" H Toilet, with Hand Spray, White	302321781	320 Low Profile - 14" H Toilet, with Hand Spray, White
302320183	320 Standard Height - 18" H Toilet, with Hand Spray, Bone	302321783	320 Low Profile - 14" H Toilet, with Hand Spray, Bone

## DOMETIC 310 SERIES TOILETS

MODEL NUMBER	DESCRIPTION	MODEL NUMBER	DESCRIPTION
302310081	310 Standard Height - 18" H Toilet, White	302311681	310 Low Profile - 13 ¾" H Toilet, White
302310083	310 Standard Height - 18" H Toilet, Bone	302311683	310 Low Profile - 13 ¾" H Toilet, Bone
302310181	310 Standard Height - 18" H Toilet, with Hand Spray, White	302311781	310 Low Profile - 13 ¾" H Toilet, with Hand Spray, White
302310183	310 Standard Height - 18" H Toilet, with Hand Spray, Bone	302311783	310 Low Profile - 13 ¾" H Toilet, with Hand Spray, Bone

## DOMETIC 300 SERIES TOILETS

MODEL NUMBER	DESCRIPTION	MODEL NUMBER	DESCRIPTION
302300071	300 Standard Height - 18" H Toilet, White	302301671	300 Low Profile - 13 ½" H Toilet, White
302300073	300 Standard Height - 18" H Toilet, Bone	302301673	300 Low Profile - 13 ½" H Toilet, Bone
302300171	300 Standard Height - 18" H Toilet, with Hand Spray, White	302301771	300 Low Profile - 13 ½" H Toilet, with Hand Spray, White
302300173	300 Standard Height - 18" H Toilet, with Hand Spray, Bone	302301773	300 Low Profile - 13 ½" H Toilet, with Hand Spray, Bone

## ACCESSORIES

MODEL NUMBER	DESCRIPTION	MODEL NUMBER	DESCRIPTION
385311719	Mounting Adapter Kit , White*	385311658	Dometic 310 Toilet Seal
385311720	Mounting Adapter Kit , Bone*	385312073	Dometic 310 Slow Close Wooden Seat, White**
385319054	Hand Spray Kit, White*	385312074	Dometic 310 Slow Close Wooden Seat, Bone**
385311718	Water Line Extension Kit*	385311641	Water Valve Kit

\* Fits Dometic 320, 310, & 300 Series Toilets \*\* Case Qty is 2



**CLEA**



# NING

CLIMATE

FOOD & BEVERAGE

HYGIENE & SANITATION

SAFETY & SECURITY

POWER & CONTROL



# GO TO WAR ON DIRT

**SMART PRODUCTS AND ACCESSORIES THAT MAKE CLEANING A PLEASURE**

Do you like cleaning your RV kitchen or bathroom? Chances are that you will now. Dometic has put together a complete range of products that makes cleaning a pleasure – with sparkling results! It includes specially formulated fluids and treatments for every cleaning task on board.

Enjoy your journey in nice and neat surroundings, and maintain the value of your precious equipment for many years to come!



## CHEMICALS & CONSUMABLES

Dometic provides a complete line of innovative products to help keep your sanitation systems clean and comfortable. These include eco-friendly drop-ins and fluid additives for holding and flushing tanks, toilet paper, toilet bowl and seal cleaners and much more.

## WASHER DRYERS

The Ventless Washer Dryer Combo gives you the convenience of washing and drying a load of laundry in one machine with no need to cut a vent hole in your RV. Water drains to sink, shower, or gray water tank.





### DOMETIC WASHER DRYER COMBO

- Adjustable drying level & Time saver mode
- LED Display with cycle status indicator
- Continuous wash & dry cycle
- Uses 20% less water than competitors
- Easy drainage plug access
- Programmable frequent user settings
- Self-cleaning



### DOMETIC A/C COIL CLEANER

- Easy-to-use aerosol can
- Foam cleaning action penetrates evaporator and condenser coils and fins
- Cleans and protects from future debris – no rinsing required
- Improves air conditioning efficiency



### DOMETIC RV ROOF CLEANER

- Removes dirt, black streaks, oxidation, built-up road grime and much more
- Biodegradable, environmentally friendly formula
- Professional-strength protectant that leaves a silky, UV-resistant finish.
- Available in 1 gal. bottle



### DOMETIC 3 'N 1 BOWL CLEANER & TANK TREATMENT

- Rapid-dissolving, effervescent bowl cleaner
- Breaks down waste, 100% biodegradable
- Keeps tank interior clean
- Eco-friendly odor control, leaves fresh clean scent
- Convenient drop-in packets



### DOMETIC FRESH WATER TANK CLEANER

- One 32. fl. oz. bottle treats fresh water tanks up to 100 gal. in capacity
- Removes stale taste and odor from RV fresh water tank and system
- Chlorine-free formula for safe cleaning of fresh water and system
- Concentrated for professional strength



### DOMETIC TOILET BOWL & SEAL CLEANER

- Cleans and deodorizes with fresh mint scent
- Septic safe, biodegradable formula
- Easy-pour pop-up spout



## DOMETIC PREMIUM AWNING CLEANER

- Easy to use
- Removes black streaks, bird droppings, mildew, dirt, grime and more
- UV protection extends the life of your awning



## DOMETIC ULTRA DISSOLVING 2 PLY

- 2-ply toilet tissue breaks up quickly to prevent clogs
- 100 % recycled fibers
- Suitable for RV and marine toilet systems



## DOMETIC ULTRA DISSOLVING 1 PLY

- This toilet paper is specially formulated
- It is fast and easily soluble preventing blockages
- Incredibly soft yet strong
- Environmentally friendly
- Suitable for all portable and cassette toilets

## DOMETIC CLEANING

MODEL NUMBER	DESCRIPTION	MODEL NUMBER	DESCRIPTION
WDCVLB2	Dometic Washer Dryer Combo - Ventless, Black	D1225001	Dometic Fresh Water Tank Cleaner - 32 oz/8 cs
D1110001	Dometic Premium Holding Tank Treatment - Drop-In 1.5 oz/12 pk/6 cs	D1303001	Dometic Gray Water Tank Treatment-32 oz/8 cs
D1110002	Dometic Premium Holding Tank Treatment - Drop-In 1.5 oz/24 pk/6 cs	D1201001	Dometic RV Roof Sealer - 1 g/4 cs
D1111001	Dometic Premium Holding Tank Treatment - 4 oz/48/cs	D1202001	Dometic RV Roof Cleaner- 1 g/4 cs
D1111002	Dometic Premium Holding Tank Treatment - Liquid - 32 oz /4 cs	D1207002	Dometic RV Wash 'N Wax Cleaner- 32 oz/8 cs
D1111004	Dometic Premium Holding Tank Treatment Single Dose Display - 4 oz/16/cs	D1227001	Dometic Advanced A/C Coil Cleaner - 19 oz/6 cs
D1111007	Dometic Premium Holding Tank Treatment - Liquid - 64 oz TPM/4 cs	D1422001	Dometic Slide Out Lubricant - 15 oz/6 cs
D1112001	Dometic 3 'N 1 Bowl Cleaner & Tank Treatment - 1.5 oz/12 pk/6cs	D1426001	Dometic Slide Out Seal Treatment - 15 oz/6 cs
D1112002	Dometic 3 'N 1 Bowl Cleaner & Tank Treatment - 1.5 oz/24 pk/6 cs	D1205002	Dometic Awning Cleaner - 32 oz/8 cs
D1112004	Dometic 3 'N 1 Bowl Cleaner & Tank Treatment Single Dose Display - 1.5 oz/16 cs	379700023	Dometic Ultra Dissolving 2-Ply 96 Rolls/ Carton
D1113002	Dometic Clean 'N Green - Liquid-32 oz/8 cs	379441205	Dometic Ultra Dissolving 2-Ply - 4 pk/12 cs
D1114002	Dometic Clean 'N Green - Drop In-1.5 oz/12 pk/6 cs	379441204	Dometic Ultra Dissolving 1-Ply - 4 pk/12 cs
D1216001	Dometic Toilet Bowl & Seal Cleaner-32 oz/8 cs		



# WA HEA





# TER TERS

CLIMATE

FOOD & BEVERAGE

HYGIENE & SANITATION

SAFETY & SECURITY

POWER & CONTROL



# WATER HEATERS

## A NECESSARY LUXURY

Do you enjoy taking a cold shower on a winter's day? Neither do we. That's one reason why we are pleased to offer you a selection of durable and reliable water heaters – to ensure you always have hot water on tap. Some think hot water is a luxury travelers can be without. That is not true. If you want to enjoy the journey, you need hot water.

Play hard, then relax. Immerse yourself and find comfort in a soothing shower while on the road. Hygiene has never been easier thanks to the reliability and efficiency offered by Dometic's water heaters. A full range of gas, gas/electric combination and XT models means a best-in-class water heater is ready to suit your needs while living mobile.

## WATER HEATERS

Easy to install and available in a wide range of capacities, Dometic water heaters are reliable, user-friendly and proven. Our products are complemented by a full range of spare parts and accessories, including conversion kits, replacement tanks and access doors.





# DOMETIC WATER HEATERS

ENJOY THE COMFORTS OF HOME

Incorporating advanced design concepts, The Dometic Water Heater is one of the most efficient, versatile heaters available for recreation vehicles, making it easier than ever to travel with the comforts of home. A simple flip of the switch from inside the coach turns this water heater on or off. A durable, powder-coated access door makes servicing the unit easy.





## DOMETIC XT WATER HEATER

- 10 gal. water heaters provide equivalent of 16 gal. hot water; 6 gal. yields 9 gal.
- Durable, powder-coated access doors are included
- Features pre-installed winterizing bypass kit
- 10 gal. cut-out (HxWxD): 15½ x 16 x 20¾"
- 6 gal. cut-out (HxWxD): 12½ x 16 x 19½"



## DOMETIC WATER HEATER ELECTRIC RELIGHT

- Durable, powder-coated access doors are included
- 10,000 BTUs heating power
- 10 gal. cut-out (HxWxD): 15½ x 16 x 20¾"
- Also available as 6 gal. 8,000 BTU model (HxWxD: 12½ x 16" x 18")



## DOMETIC ATWOOD WATER HEATER CONVERSION KIT

Replace a Suburban 10, 12, or 16 Gal water heater with exterior dimensions of 16 7/32" W x 16 7/32" H with a Dometic Atwood 10 Gal traditional or XT water heater measuring 16" W x 15½" H

## DOMETIC CLEANING

MODEL NUMBER	DESCRIPTION	MODEL NUMBER	DESCRIPTION
90071	Dometic XT Water Heater - GE9EXT, Gas/Elec, 6 Gal.	91591	Dometic Water Heater Replacement Inner Tank for GC6AA
90073	Dometic XT Water Heater - G9EXT SP, Gas, 6 Gal.	91593	Dometic Water Heater Replacement Inner Tank for GC6AA-7E & GC6AA-8E Screw-In Element
96180	Dometic Electronic Ignition Water Heater - GH6-8E, LP Gas, 6 Gal.	91641	Dometic Water Heater Replacement Inner Tank for G6A-4E, G6A-6E, G6A-7E, & G6A-8E Front Mt. T-Stat.
96121	Dometic Electronic Ignition Water Heater - G6A8E, LP Gas, 6 Gal.	91642	Dometic Water Heater Replacement Inner Tank for GH6-4E, G6A-4E, G6A-7E & G6A-8E Front Mt. T-Stat.
94191	Dometic Electronic Ignition Water Heater - G10-3E, LP Gas, 10 Gal.	90028	Relief Valve 3/4"
94022	Dometic Electronic Ignition Water Heater - GC10-4E, Gas/Elec 110V, 10 Gal.	90364	Water Heater Maintenance Kit
91386	Dometic Water Heater Access Doors - 6 Gallon, Arctic White	91363	Universal Ignition Control Kit
91514	Dometic Water Heater Access Doors - 6 Gallon, Colonial White	91365	Potted Circuit Board With Fuse - Combo
91385	Dometic Water Heater Access Doors - 10 Gallon, Arctic White	91367	Potted Circuit Board With Fuse - Gas Only
93993	Dometic Water Heater Access Doors - 10 Gallon, Colonial White	91602	Gas Control Valve With Thermostat
91059	Dometic Water Heater Replacement Inner Tank for GC6AA-10E	91604	Relief Valve 1/2"
91060	Dometic Water Heater Replacement Inner Tank for GC10A-4E	91857	Drain Plug Kit - 1/2" Plastic (2)
91412	Dometic Water Heater Replacement Inner Tank for G6A-2, G6A-3, G6A-6, & G6A-7	92640	Grill, New Style In Door

/ SAFETY SOLUTIONS

# SAFE SECU





# TY & RITY



# **SAFETY & SECURITY**

## **DOMETIC - A BYWORD FOR RELIABILITY**

A good gas detector can save your life. Problem is, most gases from a typical on-board supply are odorless. You will only know if they have escaped into your vehicle when it is too late. But a Dometic gas detector will protect you. It detects the presence of dangerous gases in the air – and immediately sets off the alarm.





## LP GAS DETECTORS

Stay safe with Dometic LP Gas Detectors. It's designed for the RV environment, the sensor alerts you to low concentrations of LP gas using its red and green LEDs. If gas exceeds 2,000 ppm, a loud, piercing alarm will sound.

## CARBON MONOXIDE DETECTOR

Protect your family from the dangers of carbon monoxide gases. This Dometic CO alarm is less sensitive to humidity and "false" gases compared to other brands. Includes a loud alarm, digital display and patented fuel cell technology powered by batteries to utilize a more accurate sensor. Approved for ceiling mount applications. Includes three AA batteries. Industry leading 10-year life cycle.

# ESSENTIAL SAFETY

Protect your family from the dangers of carbon monoxide gases. This Dometic CO alarm is less sensitive to humidity and “false” gases compared to other brands. Includes a loud alarm, digital display and patented fuel cell technology powered by batteries to utilize a more accurate sensor. Approved for ceiling mount applications. Includes three AA batteries. Industry leading 10-year life cycle.



10 YEAR  
LIFECYCLE



## DOMETIC CARBON MONOXIDE DETECTOR DIGITAL ALARM SYSTEM

This digital alarm employs a new electrochemical sensor which signals the presence of Carbon Monoxide (CO).

- Easy-to-read digital display that clearly indicates CO levels
- Can be wall mounted or used as a tabletop unit
- Industry leading 10-year life cycle



## DOMETIC CARBON MONOXIDE DETECTOR NON-DIGITAL ALARM SYSTEM

This alarm employs a new electrochemical sensor which signals the presence of Carbon Monoxide (CO).

- Can be wall mounted or used as a tabletop unit
- Industry leading 10-year life cycle
- Includes three AA batteries



### DOMETIC DUAL LP/CO ALARM

Single unit detects both LP and CO gases. Uses patented fuel cell technology.

- Electrochemical sensor contains a proton conducting membrane which generates a current in the presence of Carbon Monoxide (CO) – alerting users
- Detects LP and CO gas
- Uses patented technology



### DOMETIC LP GAS DETECTOR

- Gas detector with red and green LED alerts
- Easy to install with standard electrical systems
- ETL listed product - tested for safety
- If gas exceeds 2,000 ppm, a loud, piercing alarm will sound
- Complete scope of delivery with mounting kit



### DOMETIC LP GAS CHECKER

- Provides a reliable measurement of gas level in propane tanks
- Ideal for use in recreational vehicles, boats and while camping
- For use on steel and aluminum propane tanks
- Easy to use
- Small and lightweight, easy to stow away

## DOMETIC CLEANING

MODEL NUMBER	DESCRIPTION	MODEL NUMBER	DESCRIPTION
32703	Dometic CO Detector Digital Alarm, White, 7 Year Warranty	31128	Dometic Dual LP/CO Alarm Surface Mt. Box, Black
32701	Dometic CO Detector Non-Digital Alarm, White, 5 Year Warranty	36720	Dometic LP Gas Detector, White
36681	Dometic Dual LP/CO Alarm 12V, White	31014	Dometic LP Gas Detector, Black
31012	Dometic Dual LP/CO Alarm 12V, Black	LPGC10	Dometic LP Gas Checker
36689	Dometic Dual LP/CO Alarm Surface Mt. Box, White		

/ PLB40 LITHIUM BATTERY

# POW CON





# ER & TROL



# STAY CONNECTED

## SMART ACCESSORIES FOR RELIABLE POWER SUPPLY - ANYTIME, ANYWHERE

While most campgrounds offer electric hook-ups, some RVers opt to go off-grid and dry camp for a few days. Powered coolers make a great addition both inside the RV and outside in storage areas providing extra space to store food and drinks.

Having a PLB40 is an added bonus that solves the issue of not having electric if dry camping, and allows for the CFX to be placed anywhere in the campsite. The ability to untether their powered cooler and bring cold drinks next to the campfire or fresh foods along side the grill is exactly what these freedom lovers are seeking.

### PLB40 LITHIUM BATTERY

The PLB40 (Portable Lithium Iron Phosphate Battery 40 Ah) is the solution for keeping a Dometic CFX powered cooler running while on any adventure. CFX users have raved about not needing ice while traveling, however, many outdoor enthusiasts enjoy visiting areas where there are no power connections.





# DOMETIC PLB40

FROM SMARTPHONES TO POWERED COOLERS  
AND ANYTHING IN BETWEEN

The power of the Dometic PLB40 is supplied by integrated lithium iron phosphate (LiFePO<sub>4</sub>) battery cells. Engineered for use in harsh outdoor environments, its rugged design will keep your gear charged and ready even on the harshest expeditions. Lightweight, with an ergonomically designed stainless steel handle, the PLB40 is easy to carry, while an integrated DC-DC charger offers three convenient ways to charge via: the vehicle 12 V DC socket, solar panel or AC home power. The user-friendly, integrated LCD display provides important information on performance including: the battery capacity, charging/ discharging status and output status.





# MAINTAIN POWER AFTER IT'S GONE

The Dometic PLB40 has powerful, integrated Lithium Iron Phosphate (LiFePO4) battery cells, providing an energy supply of 40Ah/512 Wh. Ideal for powered coolers and other 12 V appliances while on adventures, the PLB40 provides a weekend of power or longer for a Dometic CFX on a single charge. The integrated DC-DC charger offers three convenient ways to charge via: the vehicle's 12 V DC socket, a solar panel or AC home power. The battery's integrated Battery Management System protects the PLB40 from under-voltage, over-voltage, short circuiting and overheating for optimum charge time, performance and storage. With this power management system, the Dometic PLB40 has a cycle of life up to four times longer than more commonly used lithium ion batteries.



**NEW!**  
DOMETIC PLB40  
PORTABLE  
LITHIUM BATTERY



SOLAR  
COMPATIBLE



40AH/500WH



TWO USB  
OUTLETS



## NEW! DOMETIC PLB40

The Dometic PLB40 Ah lithium iron phosphate battery delivers high levels of mobile power –weekend or more of power for a Dometic CFX on a single charge. Designed for powering powered coolers and other 12 V appliances while being off-grid. Thanks to its lightweight and compact design, you can enjoy true independence and travel off-grid for longer.

- Enables you to travel off-grid for longer
- Three-way charging via 12 V DC socket, solar panel or AC home power
- Lightweight, ergonomically designed stainless steel carry-handle
- Built-in LCD screen displays: capacity, charging status and output
- Specifically designed for Dometic CFX and other powered coolers
- Powerful battery cells provide 512 Wh of energy, 40 Ah
- Designed to power a Dometic CFX for a weekend or longer



Dometic is a global company that makes mobile living easy – by providing great solutions to satisfy people’s essential needs when they are on the move. Like cooking, taking care of personal hygiene and maintaining a pleasant temperature. We offer smart and reliable products with outstanding design.



Discover other RV water heaters on our website.