

Tools Required: Small Slotted Screwdriver, Phillips Screwdriver, Adjustable Wrench, Adjustable Pliers, Seat Wrench

1. Turn water supply to tub faucet **"OFF"**
2. Remove Index Button (A), Handle Screw (B) and Handle (C) from each Stem Assembly (G)
3. Unscrew and remove old Flange (D) and Flange Nipple (E) from each Stem Assembly (G)
4. Remove each Stem Assembly (G) using Stem Tool (supplied). **NOTE:** Compare old Stem Assemblies (G) to new Stem Assemblies (G). In some cases, the lengths may not match. If the lengths do not match, alternate Stem assemblies may be available for purchase. If Stem Assemblies match, proceed to step 5.
5. Remove Seats (I) using a Seat Wrench (not supplied). **NOTE:** Compare old Seats (I) to the new Seats (I). In some cases, they may not match. If they do not match, alternate Seats (I) may be available for purchase. If Seats (I) match, proceed to step 6.
6. Install new Seats (I) using a Seat Wrench (not supplied). **Do Not Over-Tighten.**
7. Install Cap Thread Gasket (H) onto the threaded end of each new Stem Assembly (G). Open the valve fully by turning the Stem to the left until it stops. Check/Tighten Bibb Screw (J). Install each new Stem Assembly (G) using Stem Tool (supplied). **Do Not Over-Tighten.**
8. Tighten Packing Nut (F) until the Stem is snug when turned. **Do Not Over-Tighten.**
9. Turn each Stem Assembly **"OFF"**. Turn water supply to tub faucet **"ON"**. **CHECK FOR LEAKS.** Adjust as necessary.
10. Screw new Flange Nipple (E) into each Stem Assembly (G) until Hand Tight. Screw new Flange (D) onto Flange Nipple (E).
11. Replace Handle (C), Handle Screw (B) and Index Button (A) on each Stem Assembly.
12. Discard old parts after new parts are installed.

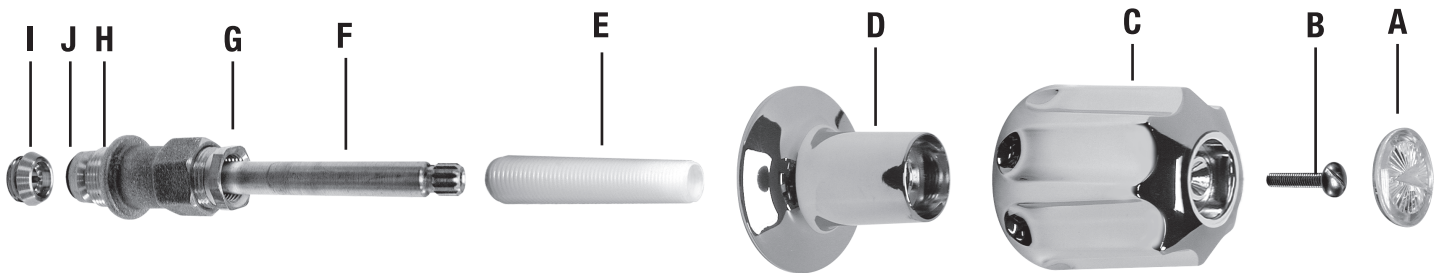


ILLUSTRATION MAY OR MAY NOT REPRESENT ACTUAL PARTS