



# Sediment Water Filter

## Installation and Operating Instructions

### Model HF-150A

**NOTE:** This filter housing does not include a filter cartridge.

Choose the appropriate filter cartridge for your needs and install in housing according to the Cartridge Replacement instructions before proceeding with installation. See cartridge selection chart.

### Specifications

Pressure Range: 30–125 psi (2.1–8.6 bar)

Temperature Range: 40–100°F (4.4– 37.7°C)

### Parts Included

- Filter housing

### Materials Required (not included)

For 3/4" and 1/2" main water line installation:

3/4-inch compression fittings for copper pipe

1/2-inch adapter fittings for copper pipe

Teflon® tape

Note: Galvanized fittings must be used for installation on galvanized pipe

### Tools Required

- screwdriver
- file
- pencil
- pipe cutter or hacksaw
- two adjustable wrenches

### Optional Materials (sold separately)

01019197 MC-1 mounting bracket      01020821 SW-2A housing wrench

01019195 BF-34 installation kit

### Precautions

**⚠ WARNING:** Do not use with water that is microbiologically unsafe or of unknown quality without adequate disinfection before or after the system.

**⚠ CAUTION:** Filter must be protected against freezing, which can cause cracking of the filter and water leakage.

**⚠ CAUTION:** The rubber O-ring provides the water-tight seal between the cap and the bottom of the housing. It is important that the O-ring be properly seated in the groove below the threads of the housing or a water leak could occur.

**⚠ CAUTION:** Because of the product's limited service life and to prevent costly repairs or possible water damage, we strongly recommend that the bottom of all plastic housings be replaced every five years for clear and every ten years for opaque. If the bottom of your housing has been in use for longer than this period, it should be replaced immediately. Date the bottom of any new or replacement housing to indicate the next recommended replacement date.

**⚠ CAUTION:** Clear housings may crack or craze in time causing failure and leakage if exposed to organic solvents, such as those found in aerosol sprays for cleaning products and insecticides.

#### NOTE:

- For cold water use only.
- Do not install where system will be exposed to direct sunlight.
- Make certain that installation complies with all state and local laws and regulations.
- The contaminants or other substances removed or reduced by the selected cartridge are not necessarily in your water. Ask your local water municipality for a copy of their water analysis, or have your water tested by a reputable water testing lab.
- After prolonged periods of non-use (such as during a vacation) it is recommended that the system be flushed thoroughly. Let water run for 5–6 minutes before using.
- The filter cartridge used with this system has a limited service life. Changes in taste, odor, color, and/or flow of the water being filtered indicate that the cartridge should be replaced.
- Some harmless bacteria may attack cellulose media cartridges. If your cartridge seems to disintegrate or develops a musty or moldy odor, switch to a synthetic media cartridge or consult the manufacturer.

# Installation

## NOTE:

- Please read all instructions, specifications, and precautions before installing and using your HF-150A whole house water filter.
- For standard under-sink installation on 1/2-inch or 3/4-inch main water line.
- Install filter cartridge in filter housing before proceeding with installation (see Filter Cartridge Replacement on page 3).
- Install filter after water meter or pressure tank.
- Numbered diagrams correspond with numbered steps.

1. Turn off water supply (A) and open nearest faucet to drain pipes before installation. Apply about 6 inches of Teflon® tape (B) in clockwise direction to pipe threads of each adapter. (These items are included in BF-34 Installation Kit - sold separately).

2. If using optional MC-1 mounting bracket (sold separately) proceed and use bracket as a template to mark screw locations. Otherwise skip to step 3

**IMPORTANT:** Allow 1-1/2 inches clearance below housing to enable cartridge changes.

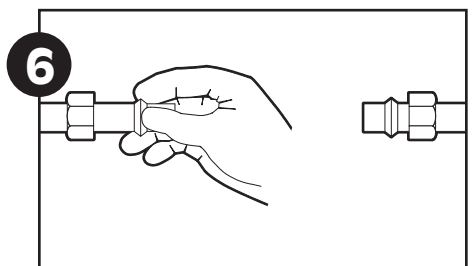
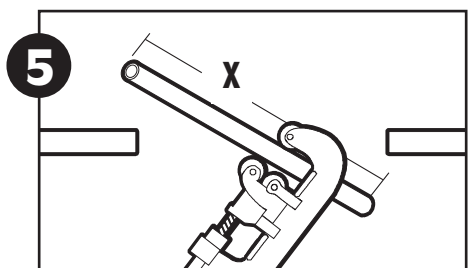
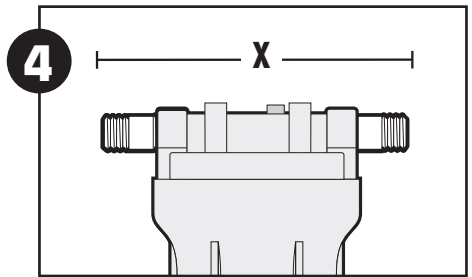
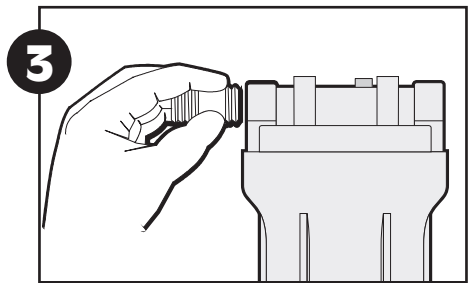
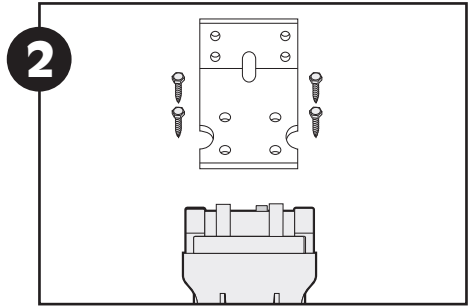
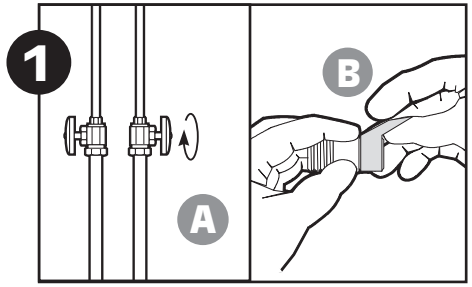
3. Assemble all fittings. Start adapters into cap by hand. Use a wrench to tighten firmly. **DO NOT OVER-TIGHTEN.** About one thread should remain visible.

4. Measure length (shown as X on diagram) across assembled fittings and subtract 1 inch for 3/4-inch pipe or 1-1/2 inches for 1/2-inch pipe. Mark section of pipe to be removed.

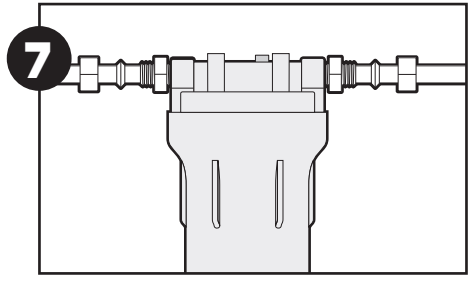
**NOTE:** Approximately 6 inches will be removed for 3/4-inch pipe and 5-1/4 inches for 1/2-inch pipe.

5. Using a pipe cutter or hacksaw, cut and remove marked section of pipe. File or sand sharp edges on remaining pipe.

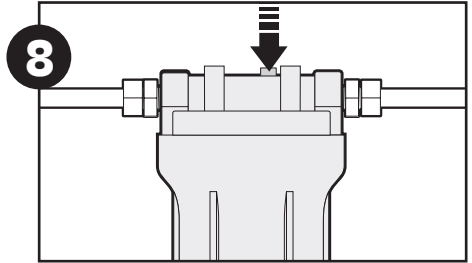
6. Slip brass compression nut and ferrule (from BF-34 installation kit) onto each end of 3/4-inch pipe. If installing on 1/2-inch pipe, substitute rubber ferrule for brass ferrule.



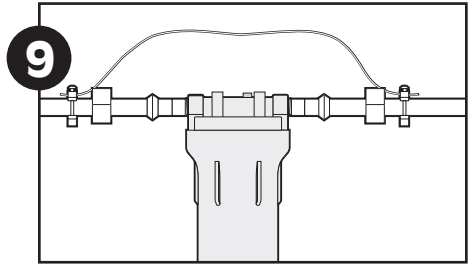
7. Align filter assembly with ends of pipe, making certain the cap opening marked "IN" is facing your incoming water supply. It will be necessary to spread ends of pipe apart to install filter assembly. Using two adjustable wrenches, hold incoming fitting securely with one wrench and tighten nut with second wrench. Repeat process for outgoing fitting.



8. Slowly turn on main water supply and depress red pressure-relief button on cap to release trapped air. Check for leaks. Open nearest faucet and flush filter for 5 minutes.

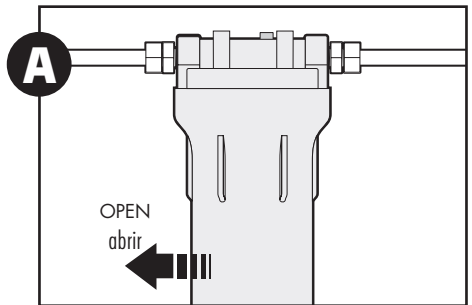


9. **CAUTION:** If water pipes are used to ground electrical systems, appliances or phones, be certain to install a jumper wire.

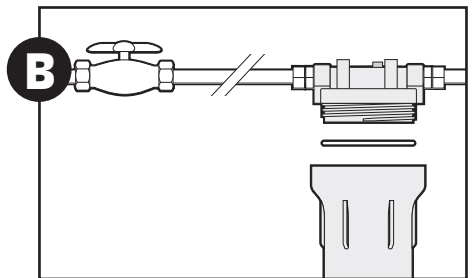


## Filter Cartridge Replacement

A. Turn off water supply to filter. Depress red pressure-relief button on top of filter. Unscrew bottom of housing.



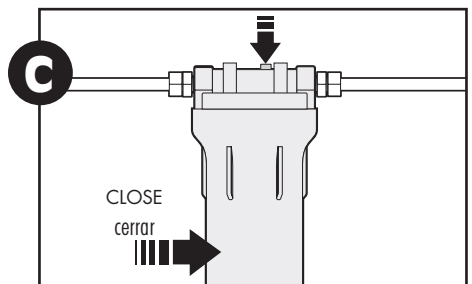
B. Locate and remove large O-ring, wipe clean of lubricant and set aside. Discard used cartridge. Rinse out bottom of housing and fill about 1/3 full with water. Add about 2 tablespoons of bleach and scrub cap and bottom of housing with nonabrasive sponge or cloth. Rinse thoroughly. Lubricate O-ring with clean petroleum jelly (Vaseline®). Insert O ring back into groove and smooth into place with finger. Insert new cartridge over standpipe in bottom of housing.



C. Screw bottom of housing onto the cap and hand-tighten. **DO NOT OVER-TIGHTEN.** Make certain cap standpipe slips into cartridge.

Turn on water supply slowly to allow filter to fill with water. Depress red pressure-relief button to release trapped air.

**NOTE:** Flush cartridge for 5 minutes. Check for leaks before leaving installation.



# Troubleshooting

## Leaks between cap and bottom of filter housing

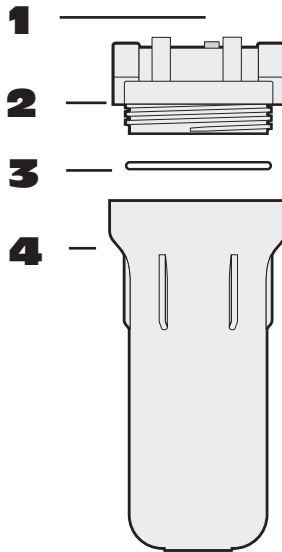
1. Turn off water supply and press the red pressure-relief button. Remove bottom of housing.
2. Clean O-ring and O-ring groove (located directly beneath threads of housing). Lubricate O-ring with clean silicone grease and replace securely into groove. Screw bottom of housing onto cap and hand-tighten. **DO NOT OVER-TIGHTEN.**

## on inlet/outlet connections:

1. Turn off water supply. For brass fittings, tighten nut snugly about 1/2-turn with a wrench.
2. Turn on water supply. If leaks persist, or if there are other leaks on system, turn off water supply.

## Replacement Parts

- |   |          |                                  |
|---|----------|----------------------------------|
| 1 | 01020650 | Pressure-relief assembly         |
| 2 | 01020638 | Blue Cap                         |
| 3 | 01020824 | OR-34 o-ring                     |
| 4 | 01020637 | Blue Housing                     |
|   | 01020821 | SW-2A housing wrench (not shown) |



The HF-150A are covered by a limited five year warranty. See warranty for details.



The HF-150A housing is tested and certified by WQA against NSF/ANSI Standard 42 for materials safety and structural integrity only.

## Filter Cartridge Selection Guide

Select the right cartridge for your water needs.	S1A	CW-F	P5	P1
Scale and rust particles	X	X	X	X
Coarse sand	X	X	X	X
Sand/dirt/silt	X	X	X	X
Fine dirt/silt/sand		X	X	X
Extra fine dirt/silt/sand			X	X
Filter Life (in months)*	4	3	2	2
Micron Rating (Nominal) +	20	10	5	1
Service Flow Rate gpm (lpm)**	5.0 (18.9)	4.7/(18)	1.5 (5.6)	1.5 (5.6)

\***NOTE:** Filter cartridge life varies depending on filter type, usage and water conditions (1 month = approximately 4000 gallons).

\*\***NOTE:** Flow rates measured at 60 psi (4.1 bar).

+ The smaller the micron rating, the smaller the size particle the cartridge will filter. For comparison purposes, the human hair has a diameter of approximately 70 microns. Particles smaller than 40 microns are not visible with the human eye.