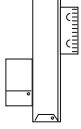
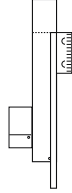


# Periscope Dryer Vent Kits

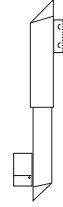
0"-5" periscope



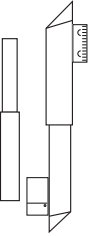
0"-18" periscope



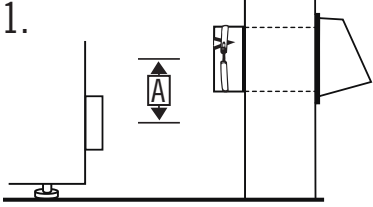
18"-29" periscope



29"-50" periscope



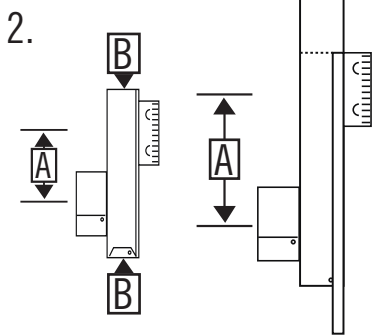
**Tools needed:**  
Phillips-head screwdriver  
Tin snips



**0-5" and 0-18" Periscope**

Cut a 1" (2.5 cm) slit into vent tailpipe. Place clamp over vent tailpipe.

Measure the distance center to center between wall vent and dryer vent.

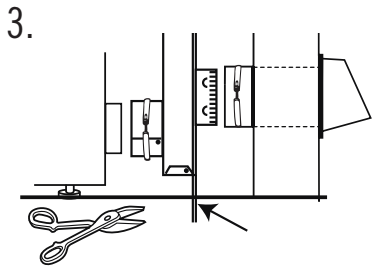


**0-5" Periscope**

Press firmly with both hands on points B to adjust periscope to the measured distance A.

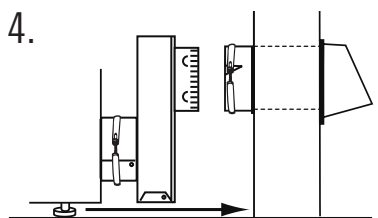
**0-18" Periscope**

Adjust periscope the measured distance between the wall and dryer vents. **If distance is less than 6" (15.2 cm), see "Removing baffles."**



If tail end of periscope interferes with floor or wall, use tin snips to trim for clearance. Cut at least 3" (7.6 cm) less than needed on first cut to allow for adjustments. (Check for interference. Cut off smaller amounts as needed.)

Place clamp over draw band of periscope. Fit draw band over dryer vent. Position clamp so it covers both the draw band fitting of periscope and dryer vent. Tighten clamp.



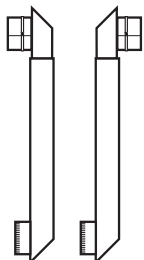
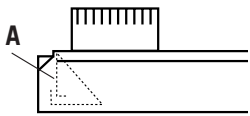
Move dryer into place. Insert crimped fitting of periscope into vent tailpipe. Position clamp so it covers the slit in the vent tailpipe and crimped fitting of periscope. Tighten clamp.

**Removing baffles (0-18)**

Straighten stop tab A.

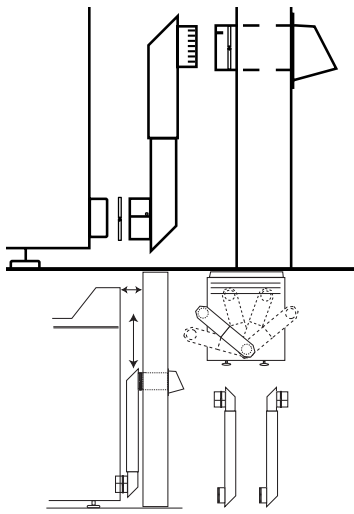
Slide periscope sections apart about 3" (7.6 cm) until baffles are loose.

Remove baffles from BOTH ENDS. Slide periscope sections back together.



**Facing fittings to the front (18-29" and 29-50")**

Facing both fittings to the front of the dryer maintains a 2 1/2" (6.4 cm) clearance behind the dryer, but allows you to extend the run with 4" diameter vent from the side or the top of the dryer.

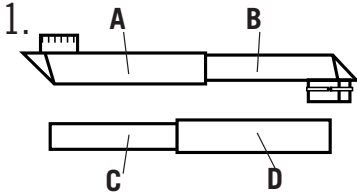


### 18-29" Periscope

Cut a 1" (2.5 cm) slit into vent tailpipe. Place clamp over vent tailpipe.

Place clamp over draw band fitting of periscope. Place draw band fitting over dryer vent. Position clamp so it covers both the draw band fitting of periscope and dryer vent. Tighten clamp.

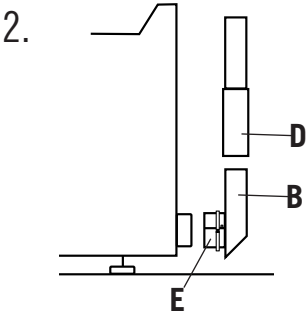
Move dryer into place and guide the crimped fitting into the vent tailpipe. Position the clamp so that it covers both the slit in the vent tailpipe and the crimped fitting. Tighten clamp.



### 1. 29-50" Periscope

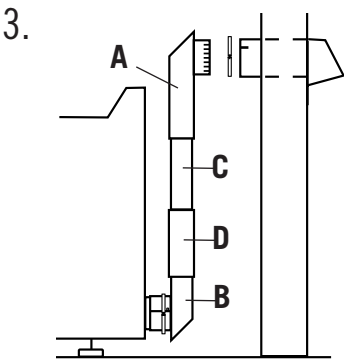
Cut a 1" (2.5 cm) slit into vent tailpipe. Place clamp over vent tailpipe.

Separate sections A and B.  
Extend sections C and D.



Place clamp on draw band fitting E. Place draw band fitting over dryer vent. Position clamp so it covers both the draw band and the dryer vent. Tighten clamp.

Slide section D onto section B. These sections do not snap together and will come apart.



If both periscope fittings need to face to the front, refer to "Facing fittings to the front" section.

Slide section A onto section C. These sections will snap together.

Move dryer into place and guide the crimped fitting into vent tailpipe. Position clamp so it covers both the slit in the vent tailpipe and the crimped fitting. Tighten clamp.

## ! WARNING! IMPORTANT SAFETY INSTRUCTIONS • SAVE THESE INSTRUCTIONS

To reduce the risk of fire or injury to persons, follow basic precautions, including the following:

1. For use with clothes dryers only, do not use for any other purposes.
2. Keep area around the exhaust opening and adjacent areas free from the accumulation of lint, dust, and dirt.
3. The interior of the exhaust duct should be cleaned periodically (at least once a year) by qualified service personnel.
4. A gas dryer should always be vented outdoors.
5. Regularly inspect the exhaust duct to be sure that it has not become crushed or otherwise restricted.

## RECOMMENDATIONS

Clothes dryer should not be exhausted into a chimney, a wall, a ceiling, or a concealed space of a building.  
Local building codes shall be followed for installations.

Parts are covered by US patents: 5,121,948; 5,145,217; 5,133,579; 5,158,328; 5,498,204; 5,653,631; 5,819,435; 5,943,743; 6,035,495; 6,370,794; 6,390,510; D.335,174; D.342,130; D.342,782. Canadian patents 2,062,123; 2,063,098; 2,201,956; 2,279,599; 2,299,989; 2,317,863; Builder's Best, Inc., ® and/or patents pending. ©2016 all rights reserved