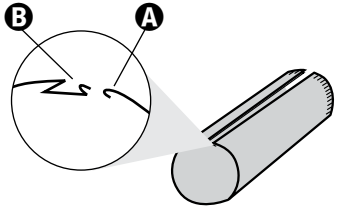
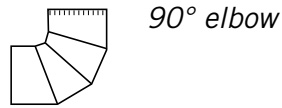
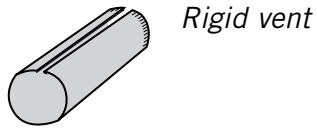


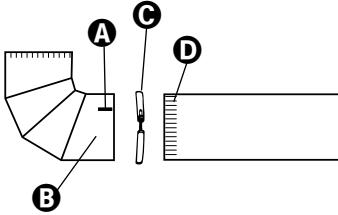
Rigid Venting Components



Rigid venting

Assemble rigid vent by inserting edge A into edge B. Push firmly until edges snap together.

Make a slit in the smooth end of rigid vent before clamping to fitting.

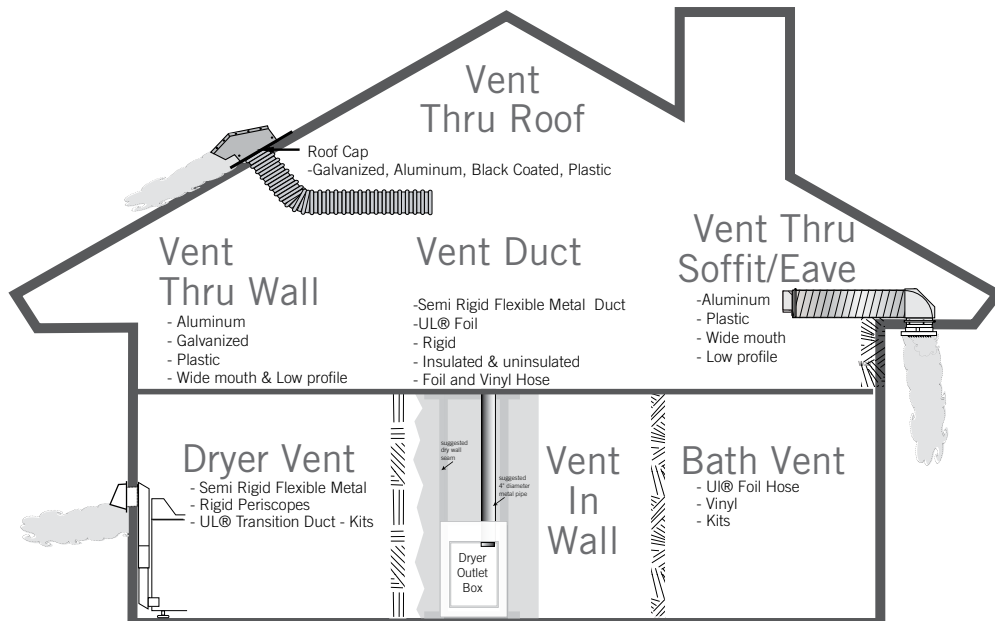


Making other connections

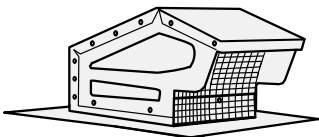
If the larger fitting does not have pre-cut slits, you need to cut a slit to create a tighter hold.

Cut a 1" (2.5 cm) slit A in larger fitting B. Place clamp C over larger fitting. Insert crimped fitting of next component. Position clamp so it covers both the slit and the crimped fitting D. Tighten clamp.

Also available



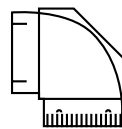
Roof Caps



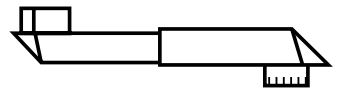
Semi Rigid Flexible Metal Duct



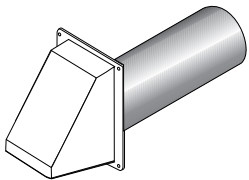
Close Elbow®



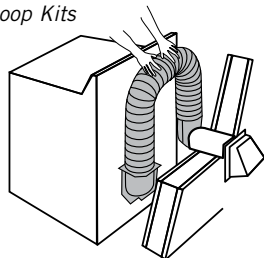
Periscope Dryer Vent Kits



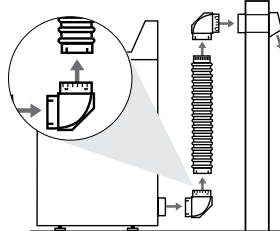
Wall Vents



Loop Kits



Snap-Lock™ Fittings



Hose

