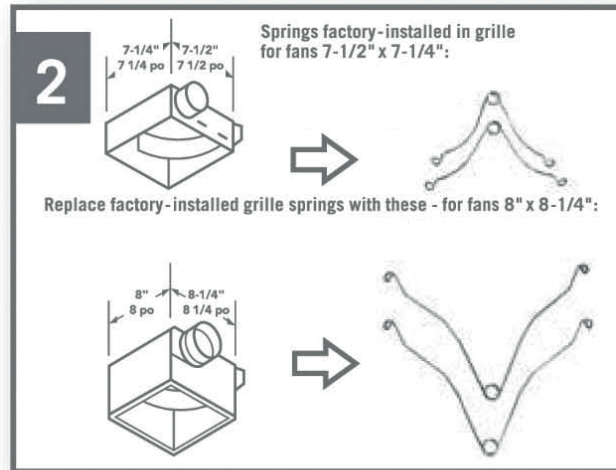


Easy Installation Steps • Installation facile

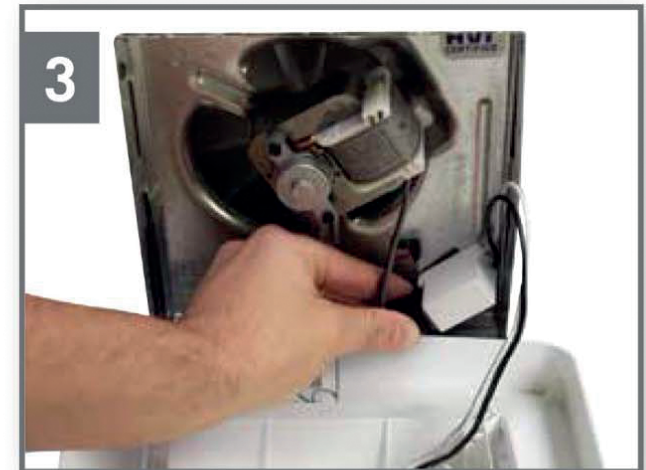
Remove old grille and unplug motor.



Choose grille springs for your fan model.



Attach new grille spring to fan with one grille spring (nearest to fan receptacle). Plug motor into pass-thru plug. Plug pass-thru plug into fan receptacle.



Attach second grille spring to fan and push grille up against ceiling.



Turn on the unit, locate the Bluetooth device on your phone, and connect.



SPECIFICATIONS:

Kit is compatible with existing fan housing dimension of 7-1/2" x 7-1/4" and 8-1/4" x 8"
Grille dimension: 10-1/4" x 9-3/4"

KIT CONTENTS:

Replacement grille with LED light,
2 sets of grille springs