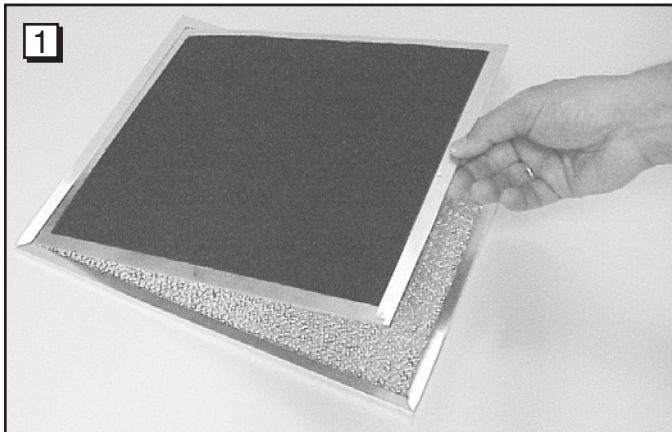
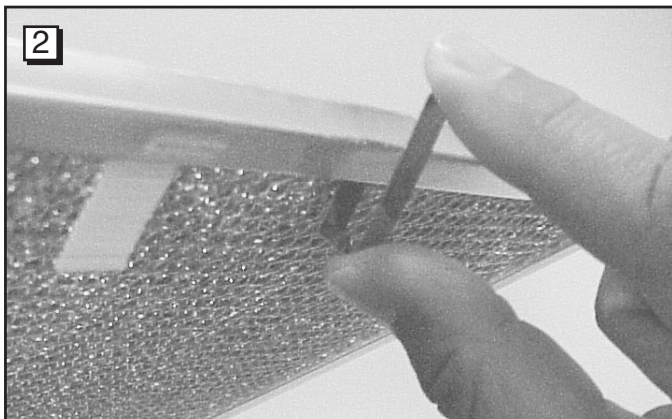


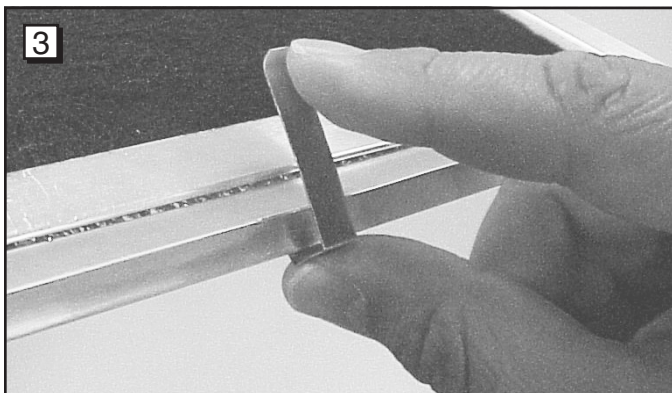
How to Install Replacement Charcoal Filters



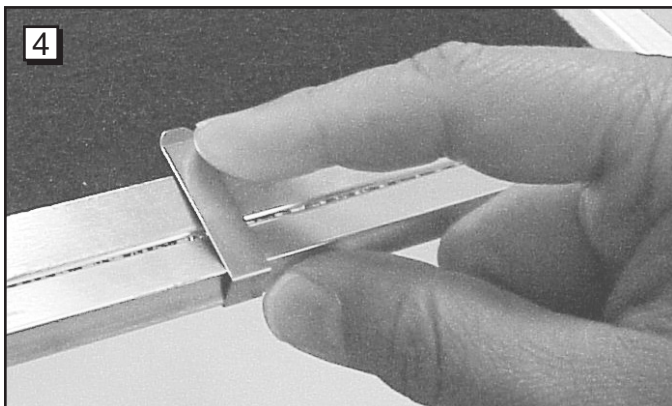
Place non-ducted filter on inside (side without pull tab) of aluminum mesh filter.



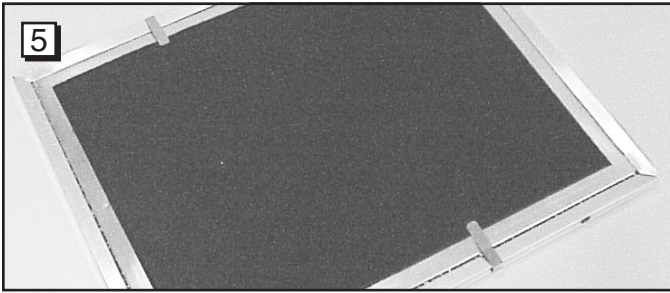
Place short end of clip against frame on “pull tab side” of aluminum mesh filter.



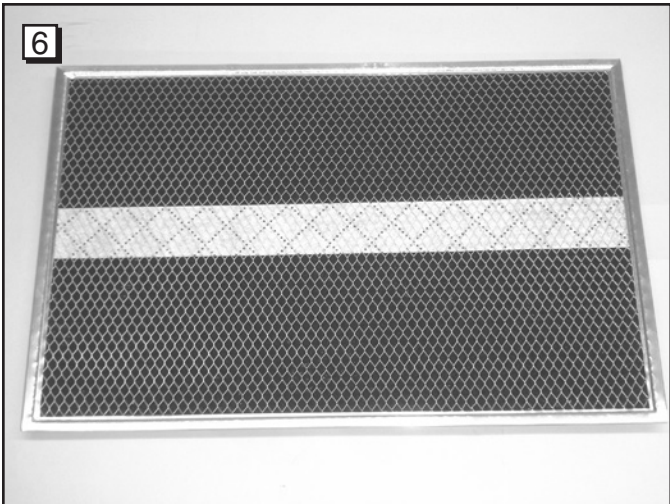
Rotate clip up and over frame...



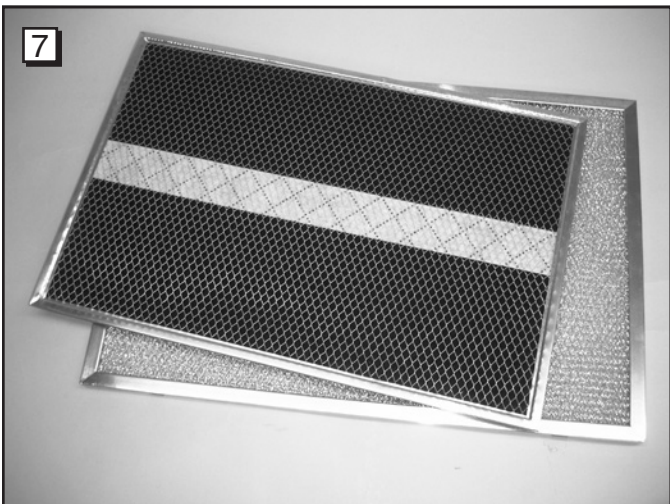
...until clip snaps in place over non-ducted filter.



Repeat for second clip on opposite end of aluminum mesh filter.



Charcoal filters: DO NOT immerse filters in water or put in dishwasher. The special “Clean Sense” feature indicates when filter is to be replaced. THE DOTTED LINES ON THE INDICATOR STRIP WILL CHANGE TO WIDE SOLID LINES. The “Clean Sense” feature works best when facing toward the cooking surface.



To check filter: Remove the filter clips and lift charcoal filter from grease filter to view indicator strip. Replace filter when the DOTTED LINES ON THE INDICATOR STRIP CHANGE TO WIDE SOLID LINES.