



BRINKS

A TRUSTED NAME IN SECURITY SINCE 1859™

COMMERCIAL

PORTABLE SECURITY





COMMERCIAL

COMMERCIAL PORTABLE SECURITY CATALOG CONTENTS

As a trusted brand in security products, the Brinks name is synonymous with 'peace of mind', strength, trust, safety, and quality. Our products deliver reliable performance, durability, provide superior cut resistance, and are built to meet the needs of tradesmen and professionals in the field.

Our products use robust materials such as BORON Carbide Steel shackles, lock bodies made of Solid Brass, Solid Stainless Steel, Heavy Duty Laminated Steel plates, and feature pick resistant cylinders. Each Brink's Commercial padlock is designed to exceed rigorous ASTM testing standards, and uses the highest quality materials to provide you with years of worry free use.

CONTENTS:

LAMINATED STEEL

BRASS

RESETTABLE BRASS

LAMINATED STEEL XT SERIES

WEATHER RESISTANT LAMINATED STEEL

RESETTABLE WEATHER RESISTANT

STAINLESS STEEL DISCUS

SOLID BODY STAINLESS STEEL

SOLID BODY STEEL

CABLES

. KEYED LOCKING

. LOOPED ENDS

HASPS

BULK PACKS



COMMERCIAL



COMMERCIAL LAMINATED STEEL

The Brinks Commercial grade padlock is a 50mm (2-inch) wide lock body, with steel laminates. Included with this rugged padlock is a full body, soft touch, TPE elastomeric jacket that helps reduce scratching or your property while also protecting the lock itself from the elements. This product also features a superior cut resistant matte finish BORON steel shackle, double stainless steel locking balls, and a 5-pin, pick resistant cylinder.



Pack	Item Number	Description	Case Pack QTY	UPC Code	Cut Strength	Pull Strength	KEY BLANKS		
							KB	Axxess	ILCO
1 pack	672-50001-4	50MM COMM LAMINATED STEEL, BORON SHKL	4	039208984942	10000 lbs.	5000 lbs.	M10	93	1092
2 pack	672-50201-4	50MM COMM LAMINATED STEEL, BORON SHKL, 2PK	4	039208985468	10000 lbs.	5000 lbs.	M10	93	1092
4 pack	672-50401-4	50MM COMM LAMINATED STEEL, BORON SHKL, 4PK	4	039208984980	10000 lbs.	5000 lbs.	M10	93	1092



Pack	Item Number	Description	Case Pack QTY	UPC Code	Cut Strength	Pull Strength	KEY BLANKS		
							KB	Axxess	ILCO
1 pack	672-52001-4	50MM COMM LAMINATED STEEL, 2" BORON SHKL	4	039208985000	11000 lbs.	5000 lbs.	M10	93	1092
2 pack	672-52201-4	50MM COMM LAMINATED STEEL, 2" BORON SHKL, 2PK	4	039208988650	11000 lbs.	5000 lbs.	M10	93	1092
4 pack	672-52401-4	50MM COMM LAMINATED STEEL, 2" BORON SHKL, 4PK	4	039208985024	11000 lbs.	5000 lbs.	M10	93	1092



Pack	Item Number	Description	Case Pack QTY	UPC Code	Cut Strength	Pull Strength	KEY BLANKS		
							KB	Axxess	ILCO
1 pack	672-60001-4	60MM COMM LAMINATED STEEL, BORON SHKL	4	039208985048	17000 lbs.	8000 lbs.	M10	93	1092

COMMERCIAL



COMMERCIAL BRASS

Brinks Commercial brass padlocks feature solid brass lock bodies which resist corrosion due to the elements, making them perfect for outdoor use. Our solid brass products offer you a variety of items, including traditional full size keyed padlocks, a resettable model that allows you to select your own personal combination, or a versatile adjustable shackle model where longer shackle lengths are required. These locks feature a resettable dial combination so you can easily reset and select your own personal/secure combination.



Pack	Item Number	Description	Case Pack QTY	UPC Code	Cut Strength	Pull Strength	KEY BLANKS		
							KB	Axxess	ILCO
1 pack	671-49002-4	50MM BRASS RESETTABLE COMBO 2-3/8" BORON SHKL	4	039208984928	7000 lbs.	1000 lbs.	N/A	N/A	N/A
2 pack	671-49202-4	50MM BRASS RESETTABLE COMBO 2-3/8" BORON SHKL, 2PK	4	039208984935	7000 lbs.	1000 lbs.	N/A	N/A	N/A



Pack	Item Number	Description	Case Pack QTY	UPC Code	Cut Strength	Pull Strength	KEY BLANKS		
							KB	Axxess	ILCO
1 pack	671-50001-4	50MM COMMERCIAL BRASS SOLID BODY	4	039208988643	7000 lbs.	1000 lbs.	VR2	104	VR91



Pack	Item Number	Description	Case Pack QTY	UPC Code	Cut Strength	Pull Strength	KEY BLANKS		
							KB	Axxess	ILCO
1 pack	671-50061-4	50MM COMMERCIAL BRASS SOLID BODY, ADJ SHKL	4	039208988667	8700 lbs.	2100 lbs.	VR7	None	VR91AR

COMMERCIAL



COMMERCIAL LAMINATED STEEL XT SERIES

Brinks XT Commercial grade padlocks feature a rugged and tough laminated steel lock body. This series of padlocks feature a consumer preferred powder coated finish designed to withstand all extreme weather conditions that subject normal padlocks to rust and corrosion. This product also features a highly cut resistant BORON shackle, stainless steel locking bars, and pick resistant cylinder.



Pack	Item Number	Description	Case Pack QTY	UPC Code	Cut Strength	Pull Strength	KEY BLANKS		
							KB	Axxess	ILCO
1 pack	677-44101-4	44MM XT COMMERCIAL, 1-1/2" BORON SHKL	4	039208218573	7000 lbs.	5100 lbs.	M1	69	1092

Pack	Item Number	Description	Case Pack QTY	UPC Code	Cut Strength	Pull Strength	KEY BLANKS		
							KB	Axxess	ILCO
1 pack	677-44102-4	44MM XT COMMERCIAL, 2-3/8" BORON SHKL	4	039208218580	9700 lbs.	5200 lbs.	M1	69	1092
2 pack	677-44202-4	44MM XT COMMERCIAL, 2-3/8" BORON SHKL, 2PK	4	039208218597	9700 lbs.	5200 lbs.	M1	69	1092
3 pack	677-44302-4	44MM XT COMMERCIAL, 2-3/8" BORON SHKL, 3PK	4	039208219495	9700 lbs.	5200 lbs.	M1	69	1092



Pack	Item Number	Description	Case Pack QTY	UPC Code	Cut Strength	Pull Strength	KEY BLANKS		
							KB	Access	ILCO
1 pack	677-50001-4	50MM XT COMMERCIAL BORON SHKL	4	039208218603	11000 lbs.	4700 lbs.	M10	69	1092

Pack	Item Number	Description	Case Pack QTY	UPC Code	Cut Strength	Pull Strength	KEY BLANKS		
							KB	Access	ILCO
2 pack	677-52201-4	50MM XT COMMERCIAL, 2" BORON SHKL, 2PK	4	039208218627	12000 lbs.	5700 lbs.	M10	69	1092



COMMERCIAL



COMMERCIAL LAMINATED STEEL WEATHER RESISTANT

The Brinks Commercial grade padlock is a 50mm (2-inch) wide lock body, with steel laminates. A full body, soft touch TPE elastomeric bumper enhances the additional weather resistant lock body cover to provide superior protection against the elements. A sliding keyway cover works to restrict dirt and road grime from getting into the lock's cylinder ensuring long lasting performance. This is one of our must rugged, outdoor, weather-resistant padlocks. The lock also features a superior cut resistant, matte finish BORON steel shackle, double stainless steel locking balls, and a 5-pin, pick resistant cylinder.



Pack	Item Number	Description	Case Pack QTY	UPC Code	Cut Strength	Pull Strength	KEY BLANKS		
							KB	Access	ILCO
1 pack	677-44052-4	XT PLUS WR 44MM W/ 2-3/8" BORON SHKL	4	039208222716	9700 lbs.	5200 lbs.	M10	93	1092

Pack	Item Number	Description	Case Pack QTY	UPC Code	Cut Strength	Pull Strength	KEY BLANKS		
							KB	Access	ILCO
1 pack	677-52051-4	XT PLUS WR 50MM W/ 2" BORON SHKL	4	039208222730	12000 lbs.	5700 lbs.	M10	93	1092



COMMERCIAL



COMMERCIAL WEATHER RESISTANT RESETTABLE

The Brinks Marine Lock is the ultimate lock for use in damp marine environments where corrosive salt air is present. The fully encased, soft touch elastomeric housing provides superior weather resistance, while also protecting your valuables from scratching. This 50mm (2-inch) zinc die cast lock body features an easy-to-use, 4-dial combination so you can select your own personalized combination. Easy to reset! Both the dials and the reset switch are located behind zinc covers for added protection from dirt and the elements. This product is ideal for all types of boat docks, trailers, and anywhere that salt air would corrode traditional steel locks.



Pack	Item Number	Description	Case Pack QTY	UPC Code	Cut Strength	Pull Strength	KEY BLANKS		
							KB	Axxess	ILCO
1 pack	673-80001-4	4-DIAL RESET COMBO MARINE SS	4	039208985086	7200 lbs.	1100 lbs.	M1	69	1092



COMMERCIAL



COMMERCIAL STAINLESS STEEL DISCUS

The Brinks shielded discus locks are constructed with a stainless steel body that resists corrosion. The STAINLESS STEEL shackle provides additional security through superior cut resistance. Our discus padlocks also feature a full radius rubber bumper that helps prevent scratches and dings on trucks, tool boxes, and other surface areas. The lock features a 4-pin cylinder which increases pick resistance. This product is ideal for all types of storage lockers or sheds, truck work boxes, and remote site storage.



Pack	Item Number	Description	Case Pack QTY	UPC Code	Cut Strength	Pull Strength	KEY BLANKS		
							KB	Axxess	ILCO
1 pack	673-70001-4	70MM COMMERCIAL DISCUS W/Stainless Steel	4	039208985055	8100 lbs.		M1	69	1092
2 pack	673-70201-4	70MM COMMERCIAL DISCUS W/Stainless Steel, 2PK	4	039208985079	8100 lbs.		M1	69	1092



Pack	Item Number	Description	Case Pack QTY	UPC Code	Cut Strength	Pull Strength	KEY BLANKS		
							KB	Axxess	ILCO
1 pack	673-80002-4	80MM COMMERCIAL DISCUS W/Stainless Steel	4	039208988636	13000 lbs.		M1	69	1092

COMMERCIAL



COMMERCIAL STAINLESS STEEL LAMINATED

The Brinks Commercial Stainless Steel Laminated padlock is ideal for use in applications where moisture and corrosion would be an issue for standard laminated steel padlocks. These locks feature 100% stainless steel laminates along with a rugged stainless steel shackle and stainless steel locking bars that make this lock well suited to any outdoor location. The bumpers on the top and bottom of the lock body provide protection against denting or scratching of your valuables.



Pack	Item Number	Description	Case Pack QTY	UPC Code	Cut Strength	Pull Strength	KEY BLANKS		
							KB	Access	ILCO
1 pack	677-44811-4	44MM STAINLESS STEEL LAMINATED W/ 2" STAINLESS STEEL SHACKLE	4	039208222723	5200 lbs.	1900 lbs.	M1	69	1092
2 pack	677-44812-4	44MM STAINLESS STEEL LAMINATED W/ 2" STAINLESS STEEL SHACKLE, 2PK	4	039208222839	5200 lbs.	1900 lbs.	M1	69	1092



Pack	Item Number	Description	Case Pack QTY	UPC Code	Cut Strength	Pull Strength	KEY BLANKS		
							KB	Access	ILCO
1 pack	677-52811-4	50MM STAINLESS STEEL LAMINATED W/ 2" STAINLESS STEEL SHACKLE	4	039208222747	8400 lbs.	1900 lbs.	M1	69	1092
4 pack	677-52814-4	50MM STAINLESS STEEL LAMINATED W/ 2" STAINLESS STEEL SHACKLE, 4PK	4	039208222846	8400 lbs.	1900 lbs.	M1	69	1092

COMMERCIAL



COMMERCIAL SOLID BODY STAINLESS STEEL

The Brinks Commercial Solid Body Stainless Steel padlock is the ultimate padlock for outdoor use in extreme environments, especially in areas where moisture can cause corrosion on traditional padlocks. These locks are 100% stainless steel, including the solid lock body, 1-inch shackle, inner springs, and cylinder housing. This product is ideal for use in any location where salt, dirt, grime, water, or other contaminants would corrode other materials. Works great on trailer or on-site storage facilities that are routinely subjected to the elements.



Pack	Item Number	Description	Case Pack QTY	UPC Code	Cut Strength	Pull Strength	KEY BLANKS		
							KB	Axxess	ILCO
1 pack	672-40811-4	37MM SOLID BODY STAINLESS STEEL, STAINLESS SHKL	4	039208217415	4300 lbs.	1600 lbs.	M1	69	1092



Pack	Item Number	Description	Case Pack QTY	UPC Code	Cut Strength	Pull Strength	KEY BLANKS		
							KB	Axxess	ILCO
1 pack	672-50811-4	50MM SOLID BODY STAINLESS STEEL, STAINLESS SHKL	4	039208271722	8400 lbs.	2400 lbs.	M1	69	1092

COMMERCIAL

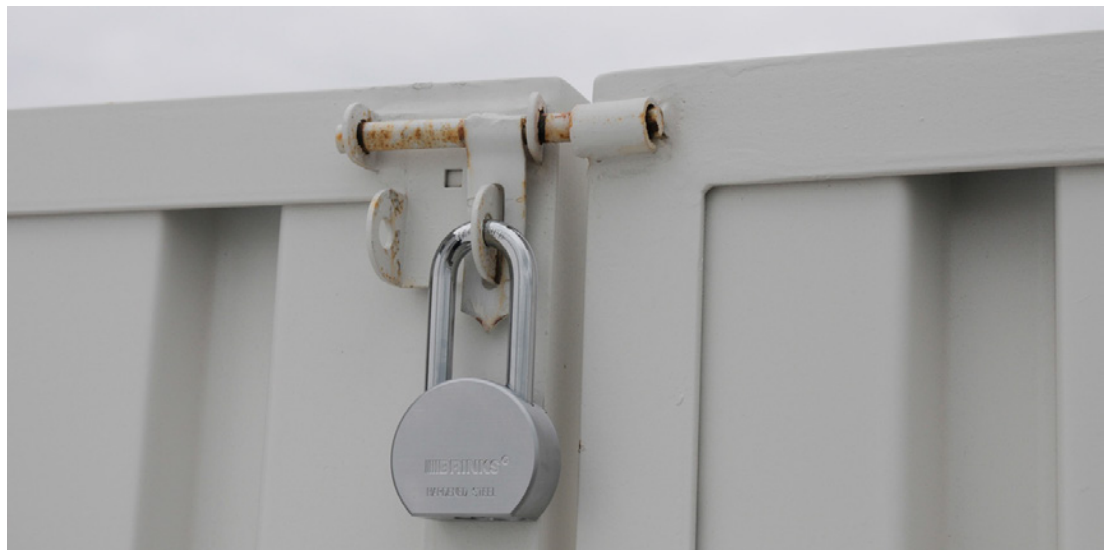


COMMERCIAL SOLID BODY STEEL

The Brinks 63.5mm Solid Body Steel Commercial grade padlock features a rugged solid steel lock body and 7/16 diameter bright chrome-plated BORON steel shackle that provides additional security through superior cut resistance. This padlock has a removable brass pin tumbler cylinder and double-steel ball bearing locking mechanism to increase pick resistance.



Pack	Item Number	Description	Case Pack QTY	UPC Code	Cut Strength	Pull Strength	KEY BLANKS		
							KB	Axxess	ILCO
1 pack	672-52701-4	COMMERCIAL, 2-1/2" SOLID BODY STL W/ 2" BORON SHACKLE	4	039208985031	17000 lbs.	10000 lbs.	A1045		



COMMERCIAL



COMMERCIAL CABLE KEYED LOCKING

Brinks Commercial flexible braided steel cable has a heavy duty vinyl protective wrap to prevent scratching and corrosion. This cable is 5/8 inch in diameter and 6 feet in length, making it ideal for locking job boxes, outdoor furniture, expensive grills, or other valuables left unattended outdoors. The cable also includes a unique reflective stripe for increased visibility at night or in darker conditions.



Pack	Item Number	Description	Case Pack QTY	UPC Code	Cut Strength	Pull Strength	KEY BLANKS		
							KB	Axxess	ILCO
1 pack	675-65801-3	5/8" X 6' COMM BRAIDED CABLE, M1 KEYWAY	3	039208220057	5000 lbs.		M1	69	1092



COMMERCIAL



COMMERCIAL CABLE LOOPED ENDS

Brinks Commercial flexible braided steel cable with a heavy duty vinyl protective wrap to prevent scratching and corrosion. This cable is 5/8 inch in diameter and 7 feet in length, featuring loop ends, that when used with one of our long shackle padlocks, provides versatility securing things like motorcycles, ATV's, jet skis, or other valuables on trailers.



Pack	Item Number	Description	Case Pack QTY	UPC Code	Cut Strength	Pull Strength	KEY BLANKS		
							KB	Axxess	ILCO
1 pack	675-62701-3	5/8" X 7' COMMERCIAL BRAIDED CABLE, LOOPED END	3	039208985796	5000 lbs.		N/A	N/A	N/A



COMMERCIAL



COMMERCIAL HASPS

Brinks Commercial Hasps feature sturdy steel construction for superior corrosion resistance. Fastening screws are included for your convenience.



Pack	Item Number	Description	Case Pack QTY	UPC Code	Cut Strength	Pull Strength	KEY BLANKS		
							KB	Axxess	ILCO
1 pack	672-74232-2	COMMERCIAL COMBO PUCK LOCK W/ ROUND HASP	2	039208985062			A1045	N/A	N/A



Pack	Item Number	Description	Case Pack QTY	UPC Code	Cut Strength	Pull Strength	KEY BLANKS		
							KB	Axxess	ILCO
1 pack	675-84501-4	COMMERCIAL 4.5" STEEL HASP	4	039208985093			N/A	N/A	N/A



Pack	Item Number	Description	Case Pack QTY	UPC Code	Cut Strength	Pull Strength	KEY BLANKS		
							KB	Axxess	ILCO
1 pack	675-87752-4	COMMERCIAL 7.75" DOUBLE HINGE HASP	4	039208985109			N/A	N/A	N/A

COMMERCIAL



COMMERCIAL BULK PACKS

Brinks bulk pack padlocks provide value and versatility for a variety of usage occasions. Each bulk pack features all padlocks keyed alike for convenience, and includes heavy duty padlocks for use in commercial buildings, factories, schools, or other commercial applications where utilizing the same key is required. Each lock offers superior cut resistance and pry resistant performance.



Pack	Item Number	Description	Case Pack QTY	UPC Code	Cut Strength	Pull Strength	KEY BLANKS		
							KB	Axxess	ILCO
24 pack	172-44002B	44MM LAMINATED STEEL, 2-3/8" SHKL, 24 KEYED ALIKE	1	039208985062	3600 lbs.	1300 lbs.	M1	69	1092

Pack	Item Number	Description	Case Pack QTY	UPC Code	Cut Strength	Pull Strength	KEY BLANKS		
							KB	Axxess	ILCO
4 pack	673-70401-2	70MM DISCUS W/Stainless Steel, 4 PK	2	039208985093	8100 lbs.		M1	69	1092

Pack	Item Number	Description	Case Pack QTY	UPC Code	Cut Strength	Pull Strength	KEY BLANKS		
							KB	Axxess	ILCO
6 pack	672-50601-2B	50MM COMM LAMINATED STL, BORON SHKL, 6PK BULK	2	039208985109	10000 lbs.	5000 lbs.	M10	93	1092

BULK PACK LAMINATED STEEL PADLOCKS

44MM LONG SHACKLE PADLOCKS - KEYED ALIKE

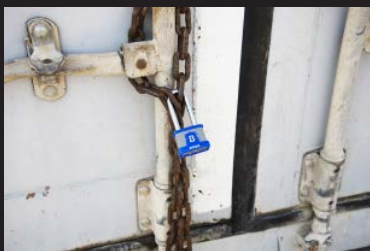
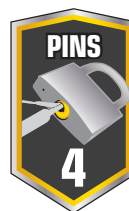
44MM LAMINATED STEEL PADLOCK WITH EXTRA LONG SHACKLE
ALL 24 PADLOCKS KEYED TO THE SAME KEY!



- Lock Body is constructed of laminated steel.
- Chrome plated hardened steel shackle
- Brass pin tumbler system
- Dual lever locking mechanism
- Lifetime warranty



This padlock is constructed of laminated steel, and features a 2-3/8 inch chrome plated hardened steel shackle. The lock is equipped with a brass pin tumbler cylinder for long lasting, smooth operation. The longer shackle is preferred by those looking to secure a cable, tool sheds, or other usage where a shorter shackle will not fit. Each lock is keyed alike for ease of use. Uses M1 keyblank. Lifetime warranty. As a global leader in security related products, the BRINKS™ name is synonymous with top quality merchandise to keep your valuables safe.



BULK PACK DISCUS PADLOCKS

70MM DISCUS PADLOCKS - KEYED ALIKE

**70MM DISCUS PADLOCK WITH BORON STEEL SHACKLE
ALL 4 LOCKS KEYED TO THE SAME KEY!**



- Lock body is constructed of stainless steel
- Boron steel shackle
- Black rubber bumper to protect valuables from scratching
- Round shielded design minimizes shackle exposure
- Lifetime warranty

Brinks 70MM discus lock is the perfect padlock for use on storage sheds, gates, tool boxes, moving trucks, or other places where the extra security of a shielded padlock is essential. The included full rubber jacket provides extra protection for your valuables by preventing scratching or denting of surfaces while in use. The four (4) locks included with this bulk pack are all keyed alike, which makes multiple security needs easy and efficient. No more searching for the right key - one key opens all four locks.





BRINKS

A TRUSTED NAME IN SECURITY SINCE 1859™

PORTABLE SECURITY



Portable Security Catalog Contents

AS A TRUSTED BRAND IN SECURITY PRODUCTS, THE BRINKS NAME IS SYNONYMOUS WITH PEACE OF MIND, STRENGTH, TRUST, SAFETY, AND QUALITY. OUR PRODUCTS DELIVER RELIABLE PERFORMANCE, ARE EASY TO USE AND INSTALL, AND OFFER AN OUTSTANDING VALUE.

EVERY BRINKS PRODUCT IS DESIGNED TO KEEP YOUR HOME, LOVED ONES, AND YOUR VALUABLES SAFE BY EXCEEDING RIGOROUS ASTM TESTING STANDARDS, AND USING THE HIGHEST QUALITY MATERIALS TO PROVIDE YOU WITH YEARS OF WORRY FREE USE.



Solid Brass

Resettable Brass Combination

Laminated Steel

- . Laminated Steel
- . Laminated Steel Warded
- . Laminated Steel Weather Resistant

Stainless Steel Shielded Discus

Dial Combinations

TSA Luggage Locks

Resettable Zinc

Cables

- . Looped Ends
- . Keyed Locking
- . Resettable Dial

U-Bar Locks

Hasps

Door Security Bar

Key Safe Lock Boxes



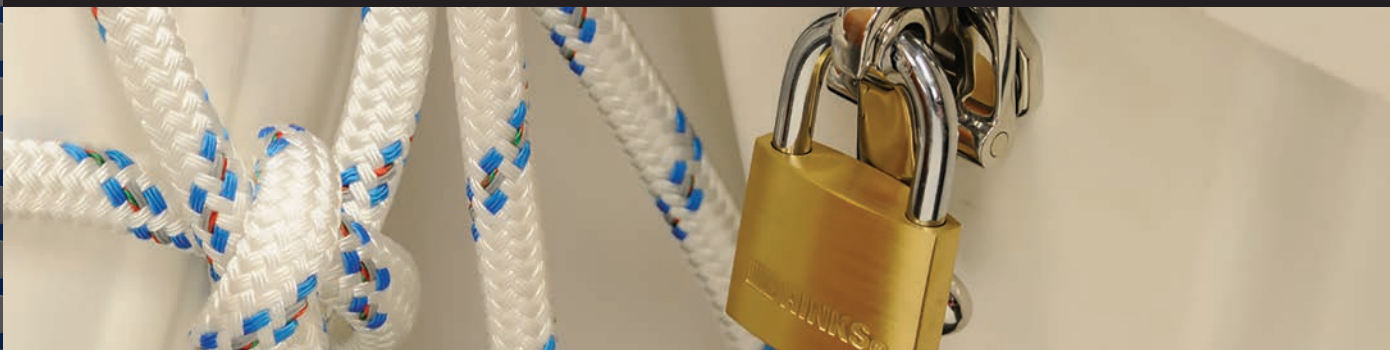
Laminated Steel

- Laminated Steel
- Laminated Steel Warded

Aluminum

Dial Combinations

Cables





Lock body is solid brass

Chrome plated hardened steel shackle for increased cut resistance

Lock is equipped with a brass pin tumbler and dual lever locking mechanism

Brass material resists corrosion making this lock perfect for use outdoors

SOLID BRASS


Pack	Item Number	Description	Case Pack QTY	UPC Code	Cut Strength	Pull Strength	KEY BLANKS		
							KB	Axxess	ILCO
2 pack	171-20201-4	20MM SOLID BRASS, 2PK	4	039208994101			1065		

STANDARD
 SECURITY


Pack	Item Number	Description	Case Pack QTY	UPC Code	Cut Strength	Pull Strength	KEY BLANKS		
							KB	Axxess	ILCO
2 pack	171-20271-6	22MM TSA SOLID BRASS, 2PK	6	039208992572	500 lbs.	100 lbs.	TSA		
4 pack	171-20471-6	22MM TSA SOLID BRASS, 4PK	6	039208992589			TSA		


STANDARD
 SECURITY


Pack	Item Number	Description	Case Pack QTY	UPC Code	Cut Strength	Pull Strength	KEY BLANKS		
							KB	Axxess	ILCO
1 pack	171-30001-4	30MM SOLID BRASS	4	039208992596	1300 lbs.	900 lbs.	VR5	None	VR91B
2 pack	171-30201-6	30MM SOLID BRASS, 2PK	6	039208992602	1300 lbs.	900 lbs.	VR5	None	VR91B


STANDARD
 SECURITY


Pack	Item Number	Description	Case Pack QTY	UPC Code	Cut Strength	Pull Strength	KEY BLANKS		
							KB	Axxess	ILCO
1 pack	171-40001-4	40MM SOLID BRASS	4	039208992619	2400 lbs.	1400 lbs.	VR7	None	VR91AR
2 pack	171-40202-4	40MM SOLID BRASS, 2PK	4	039208994163	2400 lbs.	1400 lbs.	VR7	None	VR91AR
4 pack	171-40401-4	40MM SOLID BRASS, 4PK	4	039208992626	2400 lbs.	1400 lbs.	VR7	None	VR91AR


HIGH
 SECURITY


HIGH
 SECURITY


Pack	Item Number	Description	Case Pack QTY	UPC Code	Cut Strength	Pull Strength	KEY BLANKS		
							KB	Axxess	ILCO
1 pack	171-42001-4	40MM SOLID BRASS, 2-1/2" SHKL	4	039208992633	2800 lbs.	1500 lbs.	VR7	None	VR91AR
2 pack	171-42201-4	40MM SOLID BRASS, 2-1/2" SHKL, 2PK	4	039208994194	2800 lbs.	1500 lbs.	VR7	None	VR91AR
4 pack	171-42401-4	40MM SOLID BRASS, 2-1/2" SHKL, 4PK	4	039208992954	2800 lbs.	1500 lbs.	VR7	None	VR91AR


HIGH
 SECURITY


Pack	Item Number	Description	Case Pack QTY	UPC Code	Cut Strength	Pull Strength	KEY BLANKS		
							KB	Axxess	ILCO
1 pack	171-50001-4	50MM SOLID BRASS	4	039208994224	2800 lbs.	1400 lbs.	VR2	104	VR91


HIGH
 SECURITY


Pack	Item Number	Description	Case Pack QTY	UPC Code	Cut Strength	Pull Strength	KEY BLANKS		
							KB	Axxess	ILCO
1 pack	171-50061-4	50MM SOLID BRASS, ADJ SHKL	4	039208994262	3000 lbs.	2100 lbs.	VR7	None	VR91AR


HIGH
 SECURITY


Pack	Item Number	Description	Case Pack QTY	UPC Code	Cut Strength	Pull Strength	KEY BLANKS		
							KB	Axxess	ILCO
1 pack	171-60001-4	60MM SOLID BRASS	4	039208994279	4100 lbs.	2700 lbs.	VR2	104	VR91





Lock body is solid brass

Chrome plated steel shackle for increased cut resistance

Resettable dial combination so you can easily select your own personal/secure combination

Brass material resists corrosion, making this lock perfect for use outdoors

BRASS COMBINATION RESETTABLE



STANDARD
SECURITY

Pack	Item Number	Description	Case Pack QTY	UPC Code	Cut Strength	Pull Strength	KEY BLANKS		
							KB	Axxess	ILCO
1 pack	171-30051-4	30MM SOLID BRASS RESETTABLE COMBINATION	4	039208992794	1200 lbs.	300 lbs.	N/A	N/A	N/A



STANDARD
SECURITY

Pack	Item Number	Description	Case Pack QTY	UPC Code	Cut Strength	Pull Strength	KEY BLANKS		
							KB	Axxess	ILCO
1 pack	171-40051-4	40MM SOLID BRASS RESETTABLE COMBINATION	4	039208992800	2100 lbs.	400 lbs.	N/A	N/A	N/A



HIGH
SECURITY

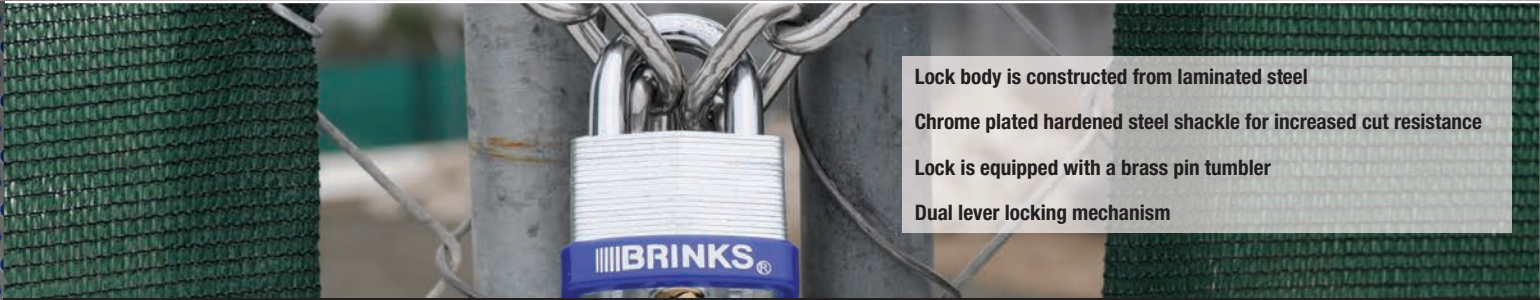
Pack	Item Number	Description	Case Pack QTY	UPC Code	Cut Strength	Pull Strength	KEY BLANKS		
							KB	Axxess	ILCO
1 pack	171-50051-4	48MM SOLID BRASS RESETTABLE COMBINATION	4	039208994231	6000 lbs.	650 lbs.	N/A	N/A	N/A



HIGH
SECURITY

Pack	Item Number	Description	Case Pack QTY	UPC Code	Cut Strength	Pull Strength	KEY BLANKS		
							KB	Axxess	ILCO
1 pack	171-50052-4	48MM SOLID BRASS RESETTABLE COMBINATION, 2" SHKL	4	039208994248	4500 lbs.	600 lbs.	N/A	N/A	N/A





Lock body is constructed from laminated steel
 Chrome plated hardened steel shackle for increased cut resistance
 Lock is equipped with a brass pin tumbler
 Dual lever locking mechanism

LAMINATED STEEL



STANDARD
SECURITY

Pack	Item Number	Description	Case Pack QTY	UPC Code	Cut Strength	Pull Strength	KEY BLANKS		
							KB	Axxess	ILCO
1 pack	172-30001-4	30MM LAMINATED STEEL	4	039208994286	1500 lbs.	500 lbs.	M2	69	1092



HIGH
SECURITY

Pack	Item Number	Description	Case Pack QTY	UPC Code	Cut Strength	Pull Strength	KEY BLANKS		
							KB	Axxess	ILCO
1 pack	172-40001-4	40MM LAMINATED STEEL	4	039208992640	2400 lbs.	1000 lbs.	M1	69	1092
2 pack	172-40201-4	40MM LAMINATED STEEL, 2PK	4	039208994354	2400 lbs.	1000 lbs.	M1	69	1092
4 pack	172-40401-4	40MM LAMINATED STEEL, 4PK	4	039208992824	2400 lbs.	1000 lbs.	M1	69	1092



HIGH
SECURITY

Pack	Item Number	Description	Case Pack QTY	UPC Code	Cut Strength	Pull Strength	KEY BLANKS		
							KB	Axxess	ILCO
1 pack	172-41001-4	40MM LAMINATED STEEL, 1-3/8" SHKL	4	039208992688	2300 lbs.	1500 lbs.	M1	69	1092



HIGH
SECURITY

Pack	Item Number	Description	Case Pack QTY	UPC Code	Cut Strength	Pull Strength	KEY BLANKS		
							KB	Axxess	ILCO
1 pack	172-42001-4	40MM LAMINATED STEEL, 2-1/4" SHKL	4	039208992701	2500 lbs.	900 lbs.	M1	69	1092
2 pack	172-42201-4	40MM LAMINATED STEEL, 2-1/4" SHKL, 2PK	4	039208994453	2500 lbs.	900 lbs.	M1	69	1092
4 pack	172-42401-4	40MM LAMINATED STEEL, 2-1/4" SHKL, 4PK	4	039208992718	2500 lbs.	900 lbs.	M1	69	1092


HIGH
 SECURITY

Pack	Item Number	Description	Case Pack QTY	UPC Code	Cut Strength	Pull Strength	KEY BLANKS		
							KB	Axxess	ILCO
1 pack	172-44001-4	44MM LAMINATED STEEL	4	039208994460	3600 lbs.	2000 lbs.	M1	69	1092


HIGH
 SECURITY

Pack	Item Number	Description	Case Pack QTY	UPC Code	Cut Strength	Pull Strength	KEY BLANKS		
							KB	Axxess	ILCO
1 pack	172-44002-4	44MM LAMINATED STEEL, 2" SHKL	4	039208992725	3600 lbs.	1300 lbs.	M1	69	1092
3 pack	172-44302-4	44MM LAMINATED STEEL, 2" SHKL, 3PK	4	039208992848	3600 lbs.	1300 lbs.	M1	69	1092


HIGH
 SECURITY

Pack	Item Number	Description	Case Pack QTY	UPC Code	Cut Strength	Pull Strength	KEY BLANKS		
							KB	Axxess	ILCO
1 pack	172-50091-4	50MM LAMINATED STEEL, BORON SHKL	4	039208994507	12000 lbs.	3800 lbs.	M1	69	1092
3 pack	172-50391-4	50MM LAMINATED STEEL, BORON SHKL, 3PK	4	039208994521	12000 lbs.	3800 lbs.	M1	69	1092


HIGH
 SECURITY

Pack	Item Number	Description	Case Pack QTY	UPC Code	Cut Strength	Pull Strength	KEY BLANKS		
							KB	Axxess	ILCO
1 pack	172-52091-4	50MM LAMINATED STEEL, 2" BORON SHKL	4	039208994569	11000 lbs.	2000 lbs.	M1	69	1092
2 pack	172-52291-4	50MM LAMINATED STEEL, 2" BORON SHKL, 2PK	4	039208994675	11000 lbs.	3000 lbs.	M1	69	1092


HIGH
 SECURITY

Pack	Item Number	Description	Case Pack QTY	UPC Code	Cut Strength	Pull Strength	KEY BLANKS		
							KB	Axxess	ILCO
1 pack	172-60091-4	60MM LAMINATED STEEL, BORON SHKL	4	039208994682	14000 lbs.	3000 lbs.	M1	69	1092

Lock body is constructed from laminated steel

Chrome plated hardened steel shackle for increased cut resistance

Warded locking mechanism



LAMINATED STEEL WARDED



Pack	Item Number	Description	Case Pack QTY	UPC Code	Cut Strength	Pull Strength	KEY BLANKS		
							KB	Axxess	ILCO
1 pack	172-30011-4	30MM LAMINATED STEEL WARDED	4	039208994293	1400 lbs.	350 lbs.	Warded	Warded	Warded
2 pack	172-30211-4	30MM LAMINATED STEEL WARDED, 2PK	4	039208994316	1400 lbs.	350 lbs.	Warded	Warded	Warded

STANDARD
SECURITY



Pack	Item Number	Description	Case Pack QTY	UPC Code	Cut Strength	Pull Strength	KEY BLANKS		
							KB	Axxess	ILCO
1 pack	172-40011-4	40MM LAMINATED STEEL WARDED	4	039208992657	2400 lbs.	500 lbs.	Warded	Warded	Warded
2 pack	172-40211-4	40MM LAMINATED STEEL, 2PK	4	039208992664	2400 lbs.	500 lbs.	Warded	Warded	Warded
3 pack	172-40311-4	40MM LAMINATED STEEL WARDED, 3PK	4	039208992671	2400 lbs.	500 lbs.	Warded	Warded	Warded
4 pack	172-40411-4	40MM LAMINATED STEEL WARDED, 4PK	4	039208994385	2400 lbs.	500 lbs.	Warded	Warded	Warded

STANDARD
SECURITY



Pack	Item Number	Description	Case Pack QTY	UPC Code	Cut Strength	Pull Strength	KEY BLANKS		
							KB	Axxess	ILCO
1 pack	172-40061-4	40MM LAMINATED STEEL WARDED, ADJ SHKL	4	039208994415	2400 lbs.	500 lbs.	Warded	Warded	Warded

STANDARD
SECURITY



Pack	Item Number	Description	Case Pack QTY	UPC Code	Cut Strength	Pull Strength	KEY BLANKS		
							KB	Axxess	ILCO
1 pack	172-42011-4	40MM LAMINATED STEEL, 2-1/4" SHKL	4	039208994439	2400 lbs.	500 lbs.	Warded	Warded	Warded

STANDARD
SECURITY


STANDARD
 SECURITY

Pack	Item Number	Description	Case Pack QTY	UPC Code	Cut Strength	Pull Strength	KEY BLANKS		
							KB	Axxess	ILCO
1 pack	172-44061-4	45MM LAMINATED STEEL, 6" ADJ SHKL	4	039208996747	3000 lbs.	600 lbs.	Warded	Warded	Warded



Lock body is constructed from laminated steel and features a full jacket to withstand the elements

Chrome plated hardened steel shackle covered in a vinyl wrap to impede rust and corrosion for increased cut resistance

Lock is equipped with a brass pin tumbler and dual lever locking mechanism

Key cylinder cover keeps dirt and grime out, allowing for smooth operation of keyway

LAMINATED STEEL WEATHER RESISTANT

HIGH
 SECURITY


Pack	Item Number	Description	Case Pack QTY	UPC Code	Cut Strength	Pull Strength	KEY BLANKS		
							KB	Axxess	ILCO
1 pack	175-81005-4	40MM LAMINATED STEEL W/ HITCH PIN	4	039208994712	2400 lbs.	1200 lbs.	M1	69	1092


HIGH
 SECURITY


Pack	Item Number	Description	Case Pack QTY	UPC Code	Cut Strength	Pull Strength	KEY BLANKS		
							KB	Axxess	ILCO
1 pack	172-40051-4	40MM LAMINATED STEEL WEATHER RESISTANT	4	039208994347	2400 lbs.	1200 lbs.	M1	69	1092
3 pack	172-40351-4	40MM LAMINATED STEEL WEATHER RESISTANT, 3PK	4	039208992817	2400 lbs.	1200 lbs.	M1	69	1092


HIGH
 SECURITY


Pack	Item Number	Description	Case Pack QTY	UPC Code	Cut Strength	Pull Strength	KEY BLANKS		
							KB	Axxess	ILCO
1 pack	172-42051-4	40MM LAMINATED STEEL WEATHER RESISTANT, 2" SHKL	4	039208994361	2400 lbs.	1200 lbs.	M1	69	1092



Pack	Item Number	Description	Case Pack QTY	UPC Code	Cut Strength	Pull Strength	KEY BLANKS		
							KB	Axxess	ILCO
1 pack	172-40081-4	40MM SURE GRIP LAMINATED STEEL WEATHER RESISTANT	4	039208994392	2800 lbs.	1200 lbs.	M1	69	1092
2 pack	172-40281-3	40MM SURE GRIP LAMINATED STEEL WEATHER RESISTANT, 2" SHKL, 2PK	4	039208994446	2800 lbs.	1200 lbs.	M1	69	1092



Lock body is constructed from stainless steel

Chrome plated hardened steel shackle for increased cut resistance

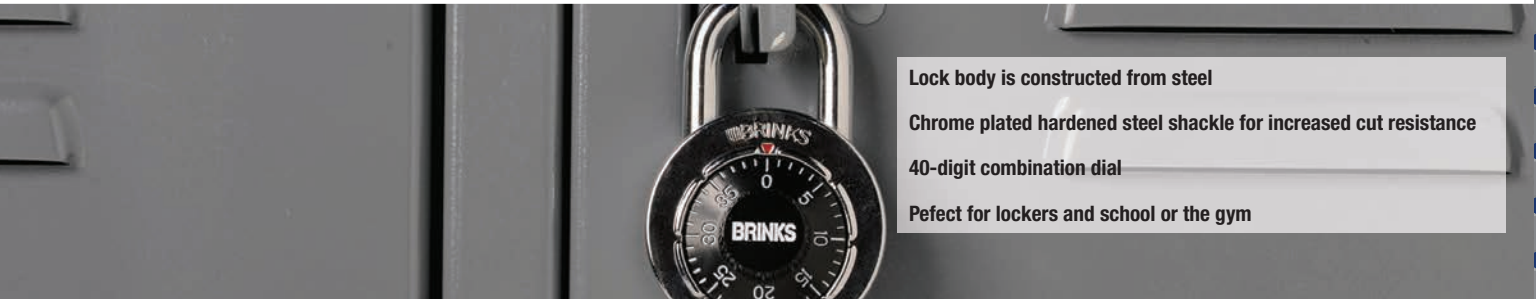
Lock is equipped with a brass pin tumbler and dual lever locking mechanism

Round shielded design minimizes shackle exposure for extra security

STAINLESS STEEL SHIELDED



Pack	Item Number	Description	Case Pack QTY	UPC Code	Cut Strength	Pull Strength	KEY BLANKS		
							KB	Axxess	ILCO
1 pack	173-70001-4	70MM SHIELDED DISCUS	4	039208994743	8100 lbs.		M1	69	1092
2 pack	173-70201-4	70MM SHIELDED DISCUS, 2PK	4	039208994750	8100 lbs.		M1	69	1092
3 pack	173-70301-3	70MM SHIELDED DISCUS, 3PK	3	039208993166	8100 lbs.		M1	69	1092



Lock body is constructed from steel

Chrome plated hardened steel shackle for increased cut resistance

40-digit combination dial

Perfect for lockers and school or the gym

DIAL COMBINATIONS



Pack	Item Number	Description	Case Pack QTY	UPC Code	Cut Strength	Pull Strength	KEY BLANKS		
							KB	Axxess	ILCO
1 pack	172-49001-4	48MM DIAL COMBO STEEL	4	039208992732	3000 lbs.	350 lbs.	N/A	N/A	N/A


STANDARD
 SECURITY

Pack	Item Number	Description	Case Pack QTY	UPC Code	Cut Strength	Pull Strength	KEY BLANKS		
							KB	Axxess	ILCO
1 pack	172-49004-4	48MM DIAL COMBO ASSORTED COLORS "OLD SCHOOL"	4	039208994491	3500 lbs.	600 lbs.	N/A	N/A	N/A


STANDARD
 SECURITY

Pack	Item Number	Description	Case Pack QTY	UPC Code	Cut Strength	Pull Strength	KEY BLANKS		
							KB	Axxess	ILCO
1 pack	172-49006-4	DIAL COMBO SAFE LOCK STYLE	4	039208992893	3500 lbs.	600 lbs.	N/A	N/A	N/A


STANDARD
 SECURITY

Pack	Item Number	Description	Case Pack QTY	UPC Code	Cut Strength	Pull Strength	KEY BLANKS		
							KB	Axxess	ILCO
1 pack	174-49004-4	48MM DIAL COMBO ANODIZED ASSRT COLORS	4	039208992763	3500 lbs.	600 lbs.	N/A	N/A	N/A
2 pack	174-49204-4	48MM DIAL COMBO ANODIZED ASSRT COLORS 2PK	4	039208992770	3500 lbs.	600 lbs.	N/A	N/A	N/A



Lock bodies are constructed of zinc diecast
 Chrome plated hardened steel shackle for increased cut resistance
 Accepted by TSA
 Travel Sentry™ approved

TSA LUGGAGE LOCKS

STANDARD
 SECURITY


Pack	Item Number	Description	Case Pack QTY	UPC Code	Cut Strength	Pull Strength	KEY BLANKS		
							KB	Axxess	ILCO
1 pack	175-25104-4	25MM ZINC COMBO TSA, ASSRT COLORS	4	039208992787			N/A	N/A	N/A



Pack	Item Number	Description	Case Pack QTY	UPC Code	Cut Strength	Pull Strength	KEY BLANKS		
							KB	Axxess	ILCO
1 pack	175-25105-4	25MM COMBO TSA BLACK W/CABLE	4	039208994583			N/A	N/A	N/A



STANDARD
SECURITY



ZINC RESETTABLE



Pack	Item Number	Description	Case Pack QTY	UPC Code	Cut Strength	Pull Strength	KEY BLANKS		
							KB	Axxess	ILCO
1 pack	175-50054-4	40MM SPORTS STYLE RESETTABLE ASSRT COLORS	4	039208992862	4000 lbs.	400 lbs.	N/A	N/A	N/A

STANDARD
SECURITY



Pack	Item Number	Description	Case Pack QTY	UPC Code	Cut Strength	Pull Strength	KEY BLANKS		
							KB	Axxess	ILCO
1 pack	175-50057-4	40MM SHOE STYLE RESETTABLE COMBO	4	039208994781			N/A	N/A	N/A

STANDARD
SECURITY



Flexible steel cable

Various lengths for your individual application

Durable vinyl coating on the cable protects against scratching and corrosion

Ideal for locking grills, tool boxes, bicycles, and other valuables left outdoors

CABLES LOOPED ENDS



HIGH
SECURITY



Pack	Item Number	Description	Case Pack QTY	UPC Code	Cut Strength	Pull Strength	KEY BLANKS		
							KB	Axxess	ILCO
1 pack	175-25481-4	40MM SURE GRIP PADLOCK W/ 4 FT. CABLE FOR SPARE TIRE	4	039208994798	2800 lbs.	1200 lbs.	M1	69	1092



STANDARD
SECURITY

Pack	Item Number	Description	Case Pack QTY	UPC Code	Cut Strength	Pull Strength	KEY BLANKS		
							KB	Axxess	ILCO
1 pack	175-06001-3T	1/4" x 6' LOOP CABLE	3	039208992909	1500 lbs.		N/A	N/A	N/A



HIGH
SECURITY



Pack	Item Number	Description	Case Pack QTY	UPC Code	Cut Strength	Pull Strength	KEY BLANKS		
							KB	Axxess	ILCO
1 pack	175-38150-3T	3/8" x 15' LOOPED END CABLE	3	039208996693	3100 lbs.		N/A	N/A	N/A



Flexible steel cable
 Keyed locking for added personal security
 Durable vinyl coating on the cable protects against scratching and corrosion
 Ideal for locking grills, tool boxes, bicycles, and other valuables left outdoors

CABLES KEYED LOCKING



HIGH
SECURITY



Pack	Item Number	Description	Case Pack QTY	UPC Code	Cut Strength	Pull Strength	KEY BLANKS		
							KB	Axxess	ILCO
1 pack	175-38606-3T	3/8" x 6' CABLE, ASSORTED COLORS W/ REFLEX STRIPE	3	039208220033	3000 lbs.		Tubular Key	N/A	N/A



Flexible steel cable
 4-Dial resettable combination so you can choose your own personalized combination
 Durable vinyl coating on the cable protects against scratching and corrosion
 Ideal for locking grills, tool boxes, bicycles, and other valuables left outdoors

CABLES RESETTABLE DIAL



HIGH
SECURITY



Pack	Item Number	Description	Case Pack QTY	UPC Code	Cut Strength	Pull Strength	KEY BLANKS		
							KB	Axxess	ILCO
1 pack	175-38654-3T	3/8" x 6' CABLE, RESETTABLE, ASSRT COLORS	3	039208995412	2000 lbs.		N/A	N/A	N/A



HIGH
SECURITY



Pack	Item Number	Description	Case Pack QTY	UPC Code	Cut Strength	Pull Strength	KEY BLANKS		
							KB	Axxess	ILCO
1 pack	175-38656-3T	3/8" x 6' CABLE, RESETTABLE, ASSRT COLORS, REFLEX STRIPE	3	039208220064	3000 lbs.		N/A	N/A	N/A



U-BAR LOCKS



HIGH
SECURITY



Pack	Item Number	Description	Case Pack QTY	UPC Code	Cut Strength	Pull Strength	KEY BLANKS		
							KB	Axxess	ILCO
1 pack	175-07007-2	U-BAR LOCK, MINI	2	039208994842	11000 lbs.	7500 lbs.	Tubular Key	N/A	N/A




HASPS


Pack	Item Number	Description	Case Pack QTY	UPC Code	Cut Strength	Pull Strength	KEY BLANKS		
							KB	Axxess	ILCO
1 pack	175-80035-6	HASP STRAIGHT BAR	6	039208994620			N/A	N/A	N/A

STANDARD
SECURITY


Pack	Item Number	Description	Case Pack QTY	UPC Code	Cut Strength	Pull Strength	KEY BLANKS		
							KB	Axxess	ILCO
1 pack	175-80055-6	HASP LARGE DOUBLE FLEX-HINGED	6	039208994644			N/A	N/A	N/A

STANDARD
SECURITY

DOOR SECURITY BAR


Pack	Item Number	Description	Case Pack QTY	UPC Code	Cut Strength	Pull Strength	KEY BLANKS		
							KB	Axxess	ILCO
1 pack	675-83001-4	20 GAUGE STEEL DOOR SECURITY BAR	4	039208985475			N/A	N/A	N/A

HIGH
SECURITY



KEY SAFE LOCK BOX



HIGH
SECURITY

Pack	Item Number	Description	Case Pack QTY	UPC Code	Cut Strength	Pull Strength	KEY BLANKS		
							KB	Axxess	ILCO
1 pack	675-80001-4	KEY SAFE PORTABLE W/ SHACKLE	4	039208985543	3500 lbs.		N/A	N/A	N/A



HIGH
SECURITY

Pack	Item Number	Description	Case Pack QTY	UPC Code	Cut Strength	Pull Strength	KEY BLANKS		
							KB	Axxess	ILCO
1 pack	675-80002-4	KEY SAFE WALL MOUNT	4	039208986571			N/A	N/A	N/A

CUSTOM KEYED ALIKE PROGRAM



Laminated Steel

Laminated Steel

- 4234-4KA - 40mm, 1-3/8" Shackle
- 4238-4KA - 40mm, 2-1/2" Shackle
- 4243-4KA - 44mm, 1-3/16" Shackle
- 4248-4KA - 44mm, 2-1/2" Shackle
- 4252-4KA - 50mm, 1-1/8" Shackle
- 4257-4KA - 50mm, 2" Shackle

NOTE:

For custom key orders, please inform sales associate of key-code required when placing your order.

CUSTOM KEYED ALIKE PROGRAM



Weather Resistant

Weather Resistant

4433-4KA - 40mm, 1-3/16" Shackle

4437-4KA - 40mm, 2" Shackle

NOTE:

For custom key orders, please inform sales associate of key-code required when placing your order.



PORTABLE SECURITY

ALUMINUM



Pack	Item Number	Description	Case Pack QTY	UPC Code	Cut Strength	Pull Strength	KB	Axxess	ILCO
2 pack	204-20201-6	20MM ALUMINUM LOCK, 2PK	6	039208976206			N/A	N/A	N/A



Pack	Item Number	Description	Case Pack QTY	UPC Code	Cut Strength	Pull Strength	KB	Axxess	ILCO
2 pack	204-30201-6	30MM ALUMINUM LOCK KEYED ALIKE, 2PK	6	039208976213			N/A	N/A	N/A



Pack	Item Number	Description	Case Pack QTY	UPC Code	Cut Strength	Pull Strength	KB	Axxess	ILCO
1 pack	204-40001-6	40MM ALUMINUM LOCK	6	039208976237			N/A	N/A	N/A

WEATHER RESISTANT



Pack	Item Number	Description	Case Pack QTY	UPC Code	Cut Strength	Pull Strength	KB	Axxess	ILCO
1 pack	202-42051-4	40MM WEATHER RESISTANT PADLOCK	4	039208214292			N/A	N/A	N/A

