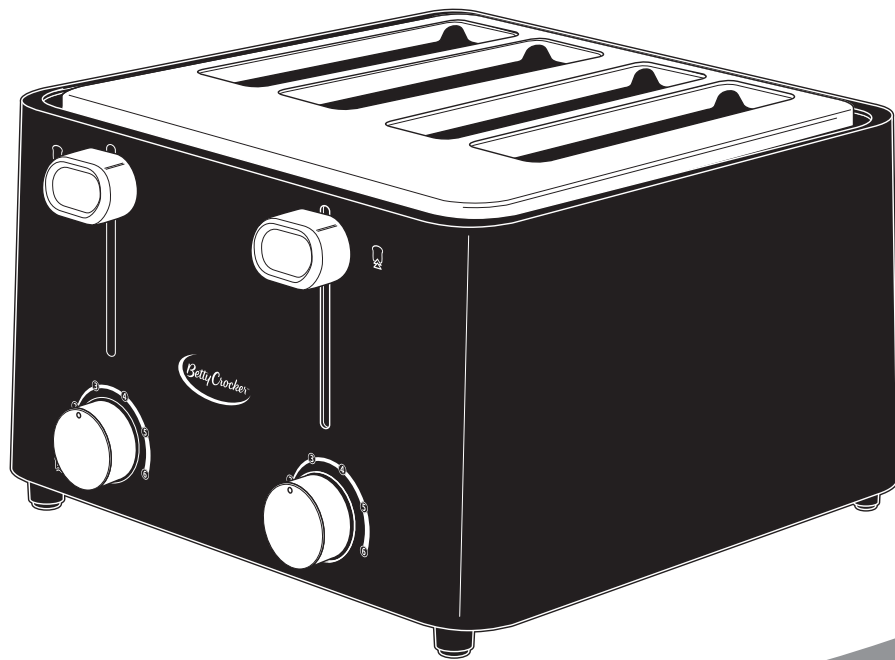




*Betty Crocker*™

4-SLICE  
**Toaster**



## Table of Contents

Important Safeguards .....	3
Before Your First Use .....	7
Know the Parts of Your Toaster .....	7
Using Your Toaster .....	8
Cleaning Your Toaster .....	9

# IMPORTANT SAFEGUARDS

When using electrical appliances, basic safety precautions should always be followed to reduce the risk of fire, electric shock and/or injury to persons, including the following:

1. **READ ALL INSTRUCTIONS CAREFULLY.**
2. Do not touch hot surfaces. Use handles or knobs.
3. To protect against risk of electric shock, do not put toaster, or cord, or plug in water or other liquid.
4. Close supervision is necessary when any appliance is used by or near children.
5. Unplug from outlet when not in use and before cleaning. Allow to cool before putting on or taking off parts and before cleaning the appliance.
6. Do not operate any appliance with a damaged cord or plug or after the appliance malfunctions or is dropped or damaged in any manner. Return the appliance to an authorized service facility for examination, repair, or electrical or mechanical adjustment.
7. The use of attachments not recommended or sold by the appliance manufacturer may cause fire, electric shock, or injury and voids warranty.
8. Do not use outdoors.
9. Do not let cord hang over edge of table or counter or touch hot surfaces, including the stove.
10. Do not clean with metal scouring pads. Pieces can break off pad and touch electrical parts resulting in risk of electric shock.
11. Do not place on or near a hot gas or electric burner or in a heated oven.
12. Do not use appliance for anything other than its intended use.
13. Oversize foods, metal foil packages, or utensils must not

be inserted in a toaster because they may cause a fire or electrical shock.

14. Do not operate toaster in an enclosed space, such as an appliance cabinet, caddy, garage, or other storage area.
15. A fire may occur if toaster is covered or touching flammable material, including curtains, draperies, walls, etc., when in operation.
16. Failure to clean crumb tray may result in a fire hazard.
17. Do not attempt to dislodge food when toaster is plugged in.
18. Do not place pastry items with runny-type frosting or open filling in toaster.
19. To protect against risk of fire, do not put rice cakes in this toaster.
20. This appliance is intended for household use only and not for commercial or industrial use.
21. Do not twist, kink or wrap the power cord around the appliance as this may cause the insulation to weaken and split, particularly in the location where it enters the unit.
22. **Do not leave appliance unattended while in use.**

## SAVE THESE INSTRUCTIONS HOUSEHOLD USE ONLY

## POWER CORD INSTRUCTIONS

1. A short power-supply cord is provided to reduce the hazard resulting from entanglement or tripping over a long cord.
2. Extension cords may be used if care is exercised. If it is necessary to use an extension cord, it should be positioned so that it does not drape over the counter or tabletop where it can be pulled on by children or tripped over unintentionally.
3. The electrical rating of the extension cord must be the same or more than the wattage of the appliance (the wattage is shown on the rating label located on the underside or back of the appliance).
4. Avoid pulling or straining the power cord at outlet or appliance connections.

## POLARIZED PLUG

1. Your appliance is equipped with a polarized plug (one blade is wider than the other).
2. To reduce the risk of electrical shock, this plug is intended to fit into a polarized outlet only one way.
3. If the plug does not fit fully into the outlet, reverse the plug. If it does not fit, please consult a qualified electrician. Do not attempt to defeat this safety feature by modifying the plug in any way.

**WARNING:** Improper use of the power cord may result in electric shock. Consult a qualified electrician if necessary.

## WARNING



To reduce the risk of fire:

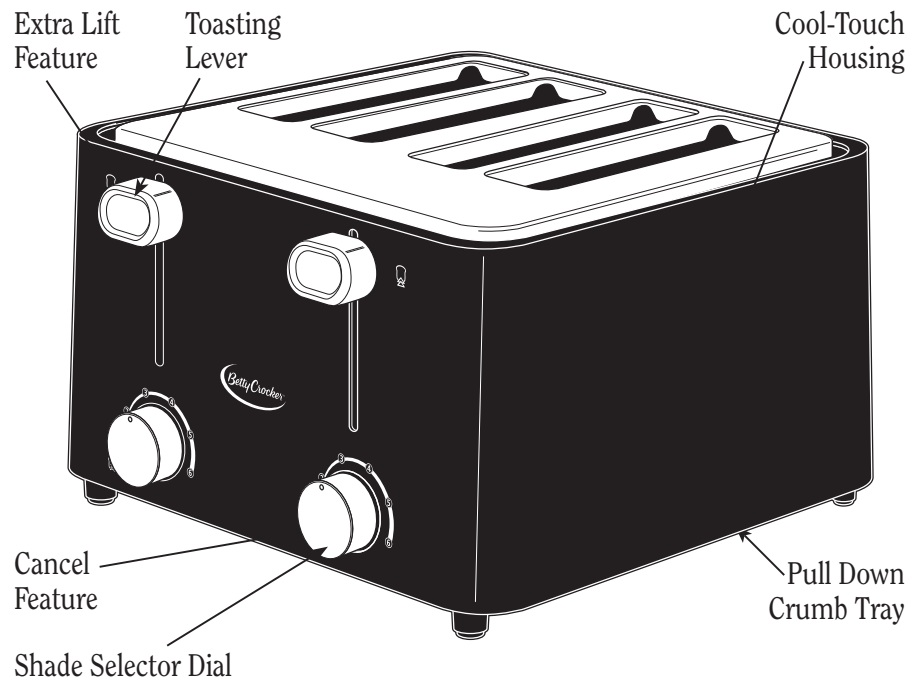
- Do not operate while unattended.
- Do not use with food that has been spread with butter, jelly, frosting, etc.
- Do not use with rice cakes, fried foods, frozen prepared foods, or non-bread items.
- Do not use with toaster pastries. Always cook toaster pastries in a toaster oven.
- Do not cover or use near curtains, walls, cabinets, paper or plastic products, cloth towels, etc.
- Do not use in or near an appliance garage.
- Closely supervise when used by or near children.
- Clean crumb tray daily.
- **Always unplug toaster when not in use.**

**Failure to follow these instructions can result in fire.**

## Before Your First Use

Carefully unpack the toaster and remove all packaging materials. To remove any dust that may have accumulated during packaging, simply wipe the toaster exterior with a clean, damp cloth. Dry thoroughly. Do not use abrasive cleansers. Do not immerse the Toaster, cord or plug in water or any other liquid.

## Know the Parts of Your Toaster



RATING: 120 V, 60 Hz, 1480 W, AC ONLY

## Using Your Toaster

### Selecting Toast Colour

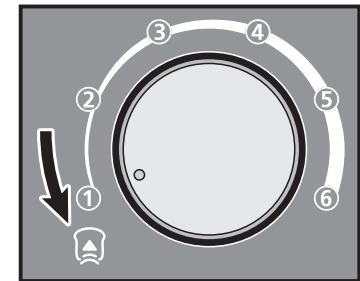
1. The toast Shade Selector Dials are located on the front of your toaster. Simply turn the Dial to the desired toast colour, (1) for light toasting, (6) for dark toasting.
2. For your first toasting, it is best to position the Shade Selector Dial in the middle (3-5), and then adjust each subsequent toasting to your preference.

### Toasting

1. Place your Toaster on a flat, dry, level surface. Insert one slice of bread into each slot.
2. Press the Toasting Lever downward until it locks into place. This will lower the bread into position and automatically begin toasting. The toast will pop up when it has reached the selected colour. (For best results, allow toaster to cool for one or two minutes between toasting cycles.)
3. The Toaster will be ready to toast again when the Toasting Lever locks into place when pushed downward.

**NOTE: The Toasting Lever will not lock into place if toaster is unplugged.**


4. Should you desire to stop the toasting before reaching the selected colour, turn the Shade Selector Dial to the Cancel (☹) function, and the toast will pop up.
5. When you press the Toasting Lever down at the start of the toasting cycle, or when you use the Cancel Function to raise the toast, you may notice a small flash of light in the toast slot at the end opposite the toasting control. This flash of light, caused when the power switch opens and closes, is normal with any high-wattage appliance.



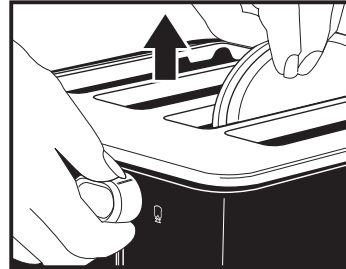
**WARNING: Do not place pastry items with runny-type frosting or open filling in toaster.**

**To protect against risk of fire, do not put rice cakes in this Toaster.**

## Extra Lift Feature

To remove smaller breads and bagels, or items such as crumpets or English muffins, lift the toasting lever approximately 20mm above the resting position (  ).

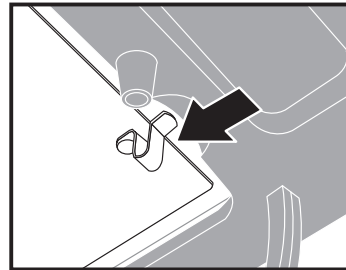
**CAUTION:** Handle with care, as the top of the toaster will be hot after each use.



## Cleaning Your Toaster

Be sure the Toaster is unplugged and completely cooled before cleaning. Wipe the Toaster exterior with a clean, damp cloth. Dry thoroughly. Do not use abrasive cleansers. Do not immerse Toaster, cord, or plug in water or any other liquid.

The pull down Crumb Tray is located on the bottom of your Toaster. Pinch the tab and pull down the crumb tray (see illustration). We recommend emptying crumbs over a sink or waste bin as crumbs will fall when the crumb tray is released.



When replacing the crumb tray, make sure it is correctly aligned before securely locking it into place.

**NOTE:** Empty the Crumb Tray after every use to prevent the hazard of fire.

**WARNING:** Never operate the Toaster without the Crumb Tray properly locked into place.

## Removing Lodged Toast

If a piece of toast becomes lodged in the Toaster, **unplug** the Toaster and allow to cool. Turn the Toaster upside down, and gently shake the toast loose.

**WARNING:** Never use a fork or sharp-edged utensil to remove toast as it may damage the heating element or cause injury.