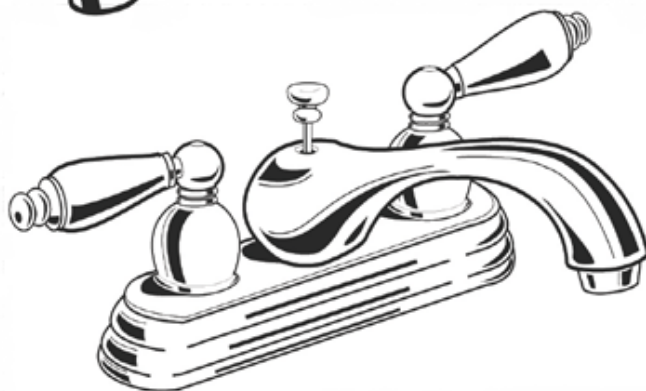


The
American
Brass Manufacturing
Company | Est. 1894

"AMERICA'S FAUCET COMPANY"



Single Handle & Two Handle Lavatory Faucet

Thank you for purchasing this American Brass product. By following the care instructions below you will enjoy this quality faucet for many years. American Brass faucets are made with the highest quality for lasting use. Since 1894, our skillfully engineered faucets have provided contemporary designs and fine finishes to complement homes across America. Our products also offer water & energy saving features.

INSTALLATION INSTRUCTIONS

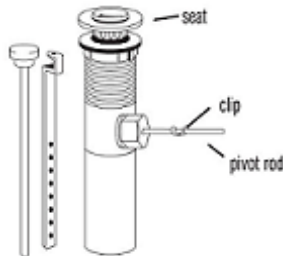
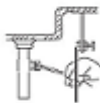
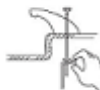
TO INSTALL SINGLE AND DOUBLE HANDLE FAUCETS: (BATH)

1. Turn off water supply.
2. Position faucet on the sink. From underneath sink secure faucet with mounting nuts. Hand tighten nuts. Check faucet position, then wrench tighten.
3. Apply thread seal tape or pipe thread compound to male faucet threads. Attach water supply lines to faucet and valves.
4. Install pop-up assembly.
5. Make sure all connections are tight and turn on water supply.
6. Unscrew and remove aerator. Turn on water and check for leaks. Run hot and cold water uninterrupted for about one minute to remove any residue from the lines. Replace aerator.



TO INSTALL POP-UP ASSEMBLY:

1. Thread mounting nut and bottom gasket onto drain body. Wrap top threaded end of the drain body with thread seal tape.
2. Insert drain body through the drain opening and screw seat onto drain body. Hold the drain body with the pivot rod opening facing the back of the sink. Hand tighten the mounting nut. Insert pop-up stopper.
3. Place pivot rod in proper opening. Slide pivot nut over rod and thread nut onto drain body. Tighten firmly but do not overtighten.
4. With lift rod in position in the faucet, insert lift rod through lift rod strap and secure with set screw.
5. Guide the pivot rod through any hole on the lift rod strap and secure it with the spring clip. Adjust the height of the lift rod by resetting the set screw.



Avoid polish or harsh abrasives on finishes! Use damp cloth to clean.



Please Conserve Water!

